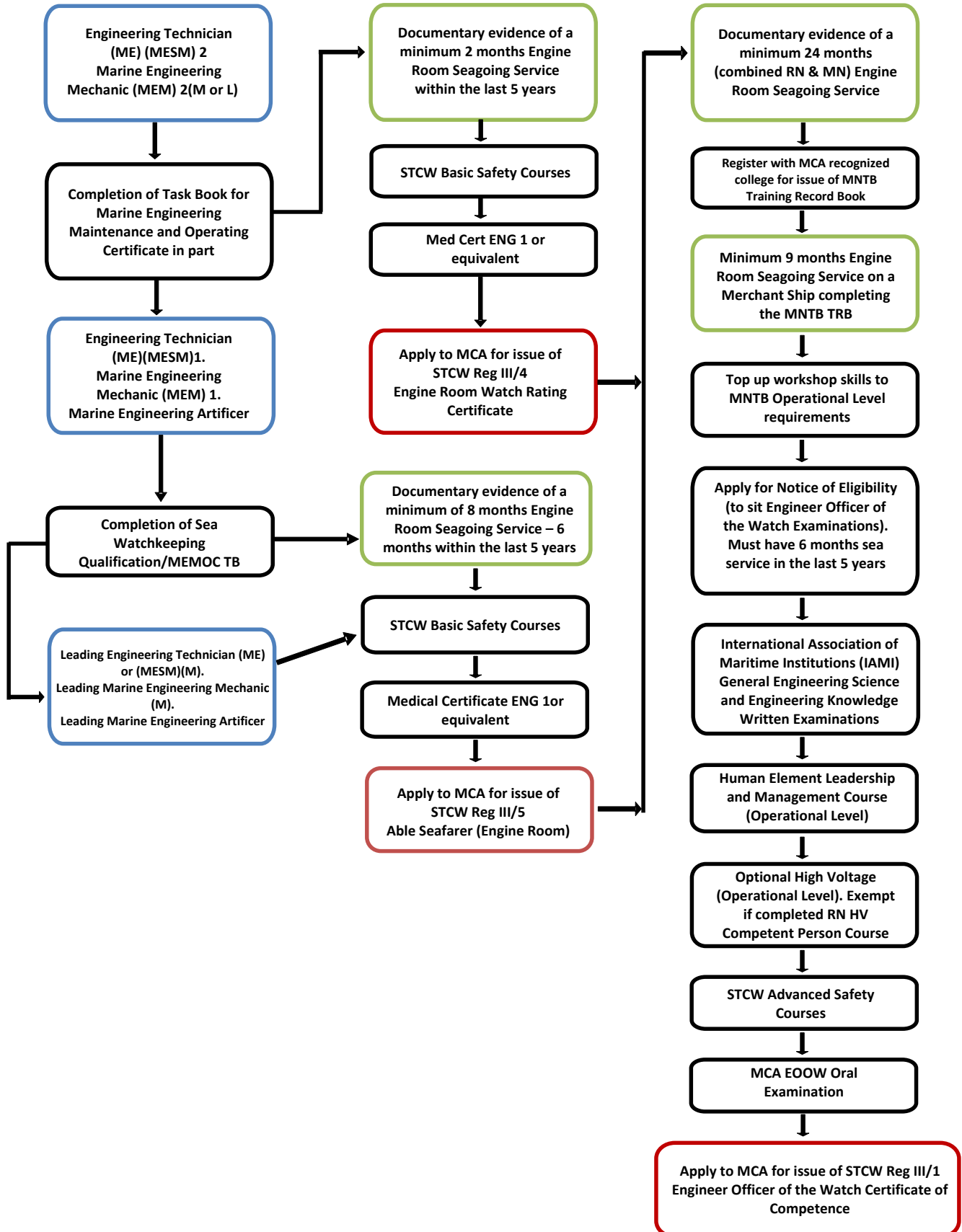


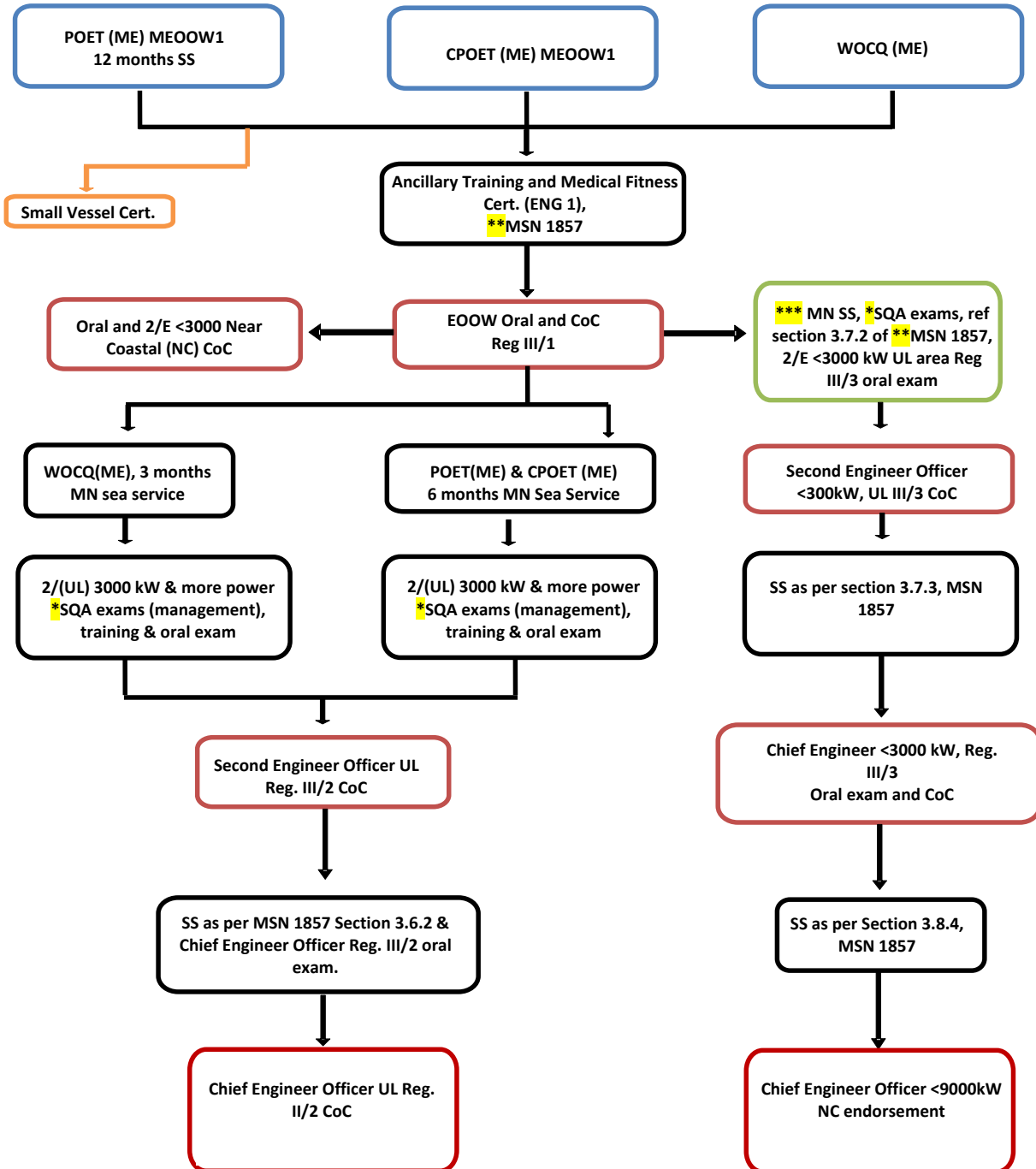


### ET(ME)/MEM(M or L) / MEA





### Petty Officer/Chief Petty Officer/Warrant Officer (ME)



\* Note 1 - Exemption from academic subjects can be claimed on subject for subject basis. There is no exemption from the professional subject e.g. Engineering Knowledge (EK).

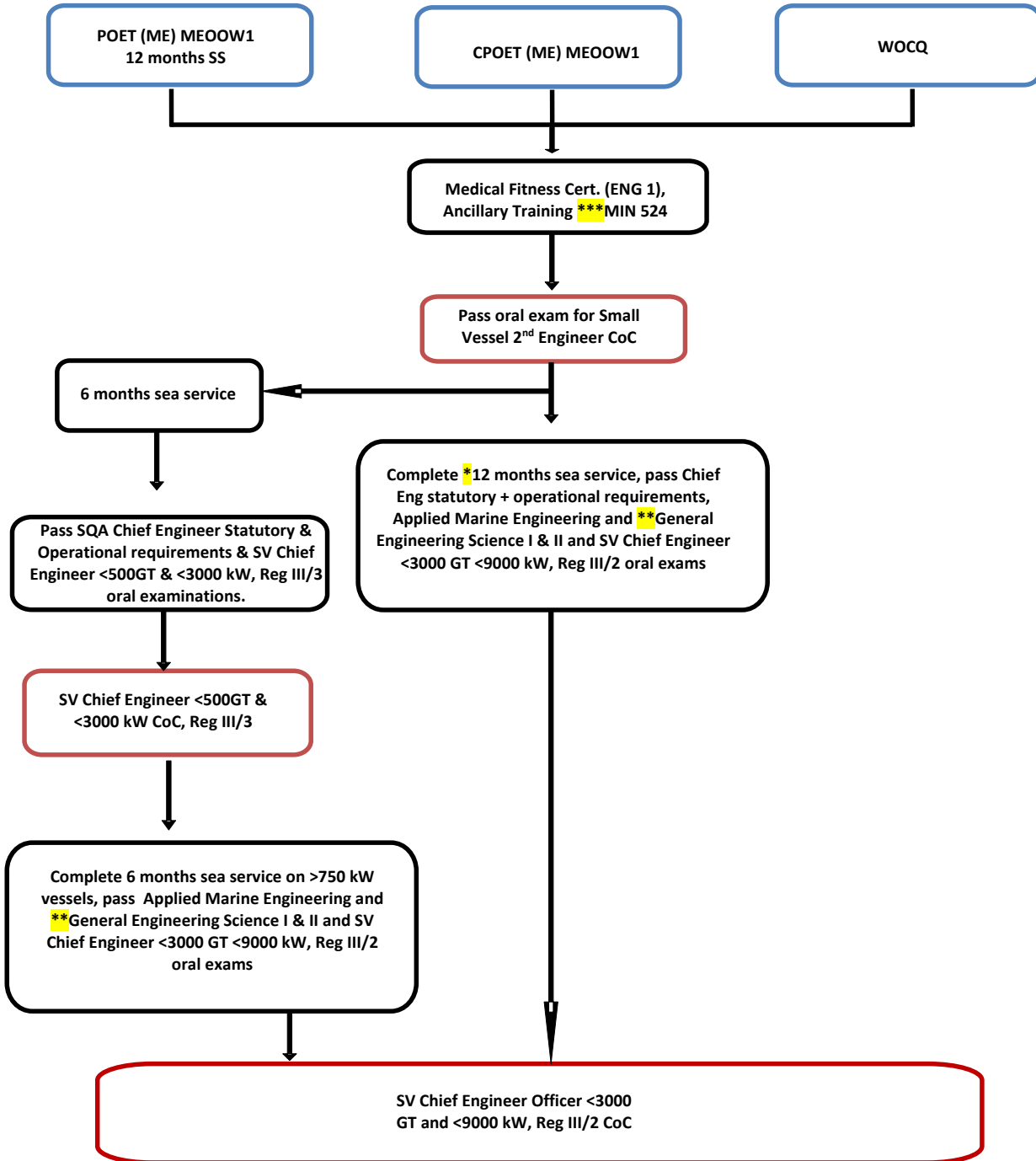
\*\* Note 2 - Merchant Shipping Notices – MSNs are available on our website [www.gov.uk/mca](http://www.gov.uk/mca).

\*\*\* Note 3 - 3 months Merchant Navy sea service for WOCQ and for others section 3.7.2 (b) of MSN 1857 will apply.

**Note** - All applicants require 6 months sea service in the preceding five years when applying to MCA for Notice of Eligibility (NOE) to sit the oral examination. If not, then applicants will be issued with Engine Room Watch Rating Certificate providing they hold basic STCW certificates and seafarer medical fitness certificate. They would then be able to complete 6 months service as rating on Merchant Navy vessels using this certificate.



**Small Vessel Certifications**  
**Petty Officer/Chief Petty Officer/Warrant Officer (ME)**  
**(Yacht, Tug, Fishing Vessel, Large Workboat, Stand-by Vessel,**  
**Seismic Survey Vessel, Oceanographic Vessel, Govt. Patrol Boat)**



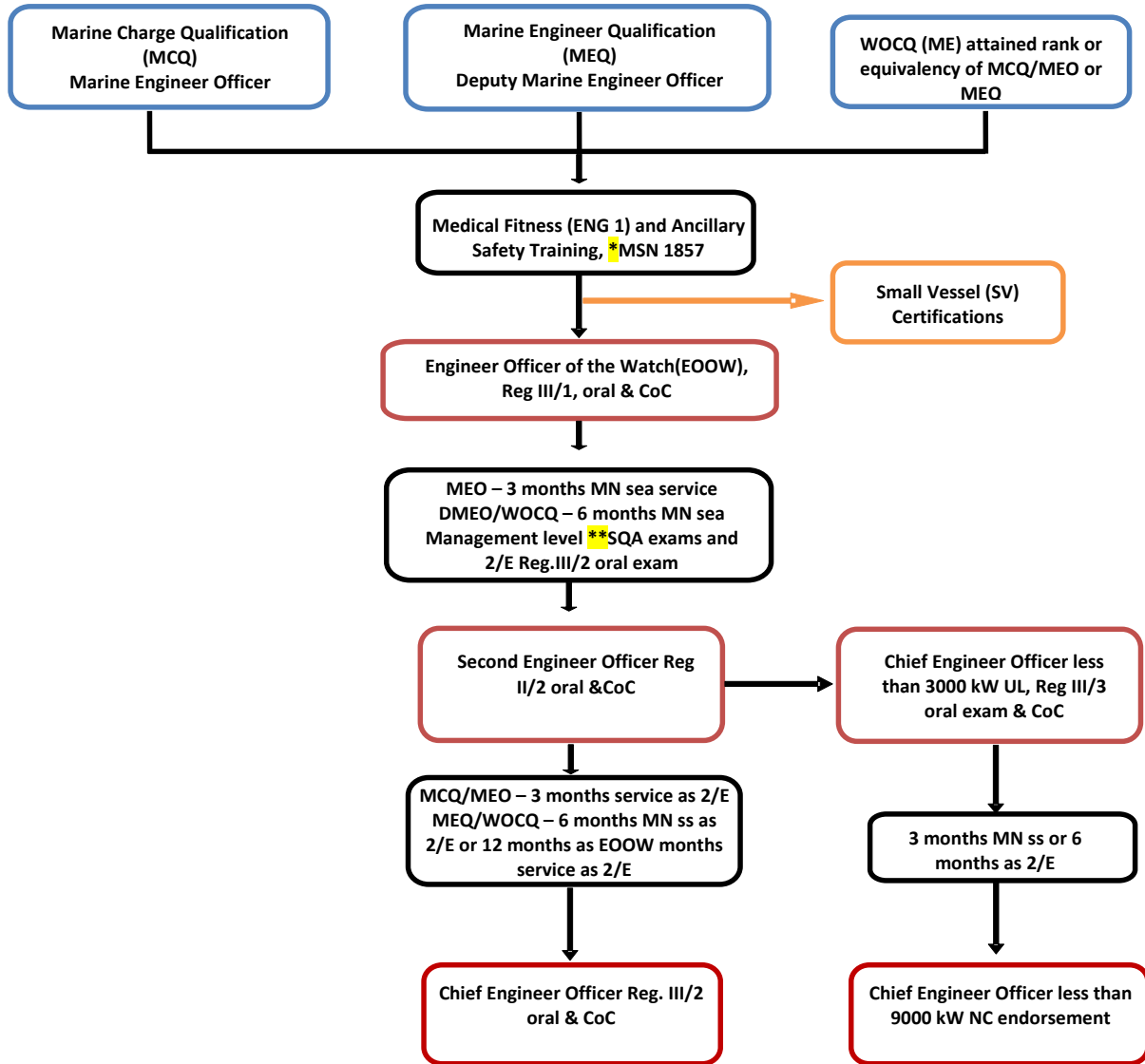
\* Note 1 - 06 months of this service can be performed on ≥350 kW vessels and remaining 06 months must complete on ≥750 kW vessels,

\*\* Note 2 - Exemption will be available (MIN 524, MSN 1857),

\*\*\* Note 3 - MSNs and MINs are available on [www.gov.uk/mca](http://www.gov.uk/mca) website. # sea service needs to complete on vessels of ≥350 kW.



## ME Officers/WO

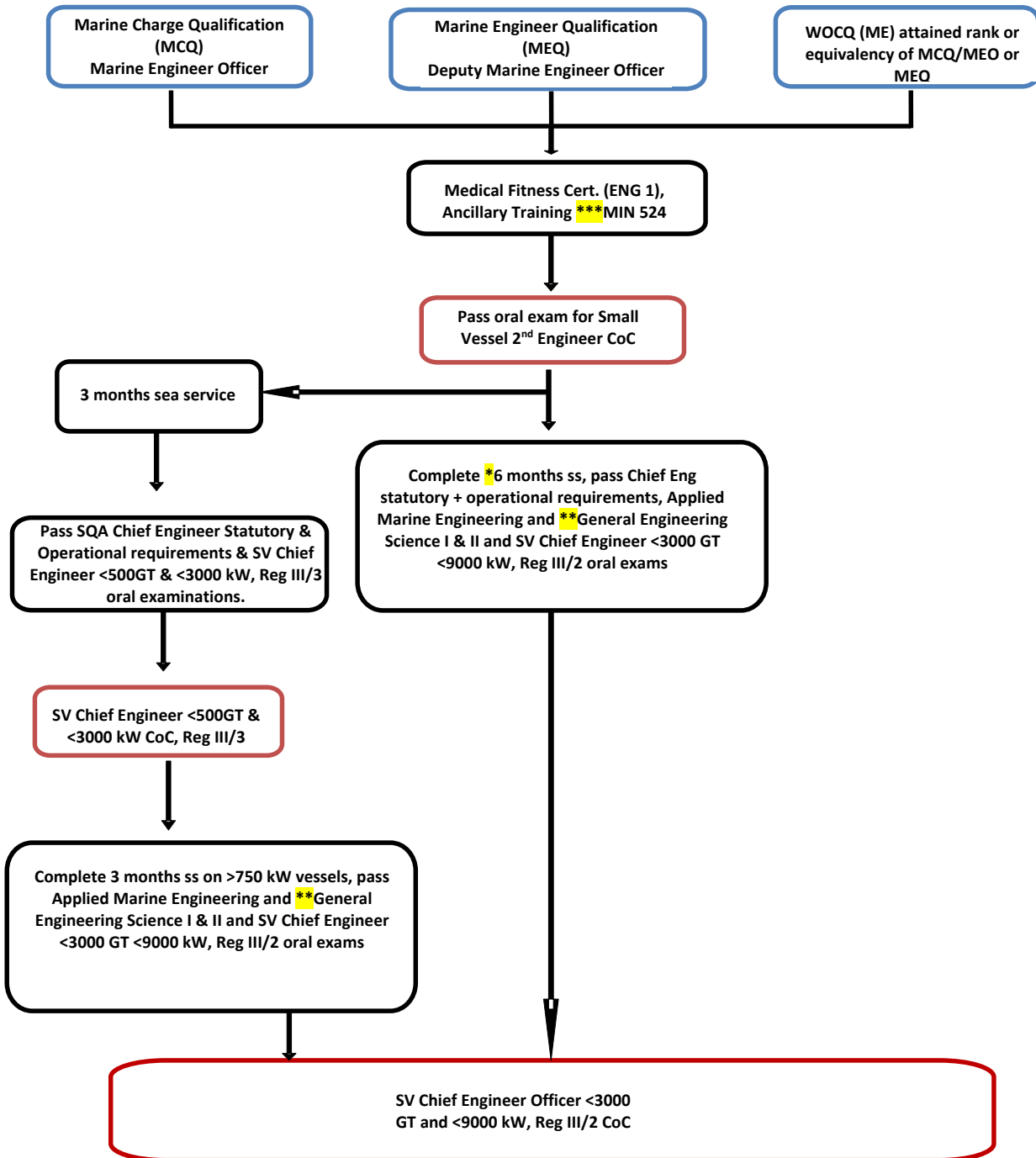


\* Note 1 - MSNs (Merchant Shipping Notice) are available on [www.gov.uk/mca](http://www.gov.uk/mca) website.

\*\* Note 2 - Exemption from academic subjects are available except professional subject 'Engineering Knowledge (EK)'



## Small Vessel Certifications – ME Officers/WO (Yacht, Tug, Fishing Vessel, Large Workboat, Stand-by Vessel, Seismic Survey Vessel, Oceanographic Vessel, Govt. Patrol Boat)



\* Note 1 - 3 months of this service can be performed on ≥350 kW vessels and remaining 06 months must complete on ≥750 kW vessels,

\*\* Note 2 - exemption will be available (MIN 524, MSN 1857),

\*\*\* Note 3 - MSNs and MINs are available on [www.gov.uk/mca](http://www.gov.uk/mca) website. # sea service needs to complete on vessels of ≥350 kW.

## General requirements for serving at sea on Merchant Navy Vessels and for obtaining a Certificate of Competency.

1. Before going to sea, all seafarers require to have the following:

a. Basic STCW safety training

RN personnel must hold the basic safety training certificates indicated below before going to sea. Their Royal Naval service may **exempt** them from the requirement to complete the following basic safety training.

To be issued with certificates of this training against the safety training they have completed in the Royal Navy they can contact either the HMS Raleigh or MWS Phoenix. They are approved by the MCA to issue these STCW certificates on our behalf. The training centres will map across RN training and issue these certificates on the training for training basis that meets the STCW requirements and standards.

- i. Personal Survival Techniques (STCW Code A-VI/1-1);
- ii. Fire Prevention and Fire Fighting (STCW Code A-VI/1-2);
- iii. Elementary First Aid (STCW Code A-VI/1-3); and
- iv. Personal Safety and Social Responsibilities (STCW Code A-VI/1-4).

b. Medical Fitness - Prior to going to sea they will have to obtain a Seafarers Medical Fitness Certificate (ENG1) from a MCA approved doctor. The approved doctors' list available on our website [www.gov.uk/mca](http://www.gov.uk/mca).

c. Security Awareness Training - Prior to going to sea they must complete Security Awareness Training (STCW Code A -VI/6, table A-VI/6-1). This training applies to vessels 500 GT and above to comply with the provisions of the ISPS Code.

2. Before obtaining a Certificate of Competency (CoC) they will require to complete the following:

- a. Required sea service;
- b. Education and Training (MCA/SQA written examinations and technical training);
- c. MCA oral Examination;
- d. Advanced STCW Safety Training from a MCA approved Training centre:
  - i. Proficiency in Survival Craft and Rescue Boats (STCW Code A-VI/2-1);
  - ii. Training in Advanced Fire Fighting (STCW Code A-VI/3); and
  - iii. Proficiency in Medical First Aid (STCW Code A-VI/4-1).

3. Explanation of Terms

- a. Reg III/1 Engineer Officer of the Watch (MEOOW1C)
- b. Reg III/2 Vessels > 3000 kW
- c. Reg III/3 Vessels >750 kW < 3000 kW
- d. Reg III/4 Ratings forming Engineering Watch (SWQ)
- e. Reg III/5 Able Seafarer (Engine Room)
- f. Reg III/6 Electro-Technical Officer
- g. Reg III/7 Electro -Technical Rating