



Department
of Health &
Social Care

Adult Social Care

Our COVID-19 Winter Plan 2020 - 2021



easy
read



Contents



3 Introduction



5 Our priorities



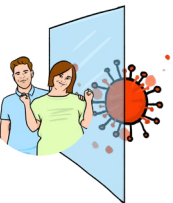
6 What we have done



9 The Government



12 Local councils and the NHS



16 Care organisations



17 For more information

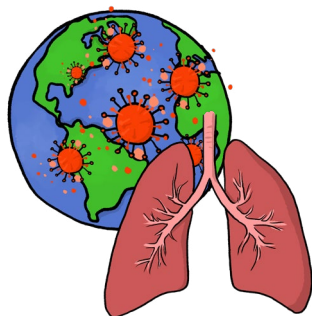
Introduction



The Government wants all the different organisations involved in **Adult Social Care** to keep people safe from **COVID-19**.



Adult Social Care is support that people need to live.



COVID-19 is also called Coronavirus. It is a new illness that is spreading around the world. It can affect your lungs and breathing.



We have written a plan to keep people safe in England through this winter, 2020 to 2021.



These plans are for:

- local councils



- NHS organisations



- **care organisations.**

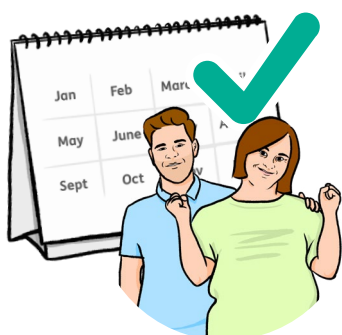
Care organisations are independent organisations and personal assistants that provide care services.

Our priorities

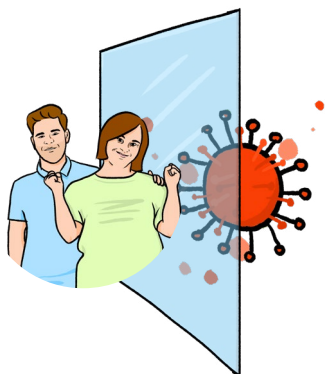


Priorities are the most important things that should be done first.

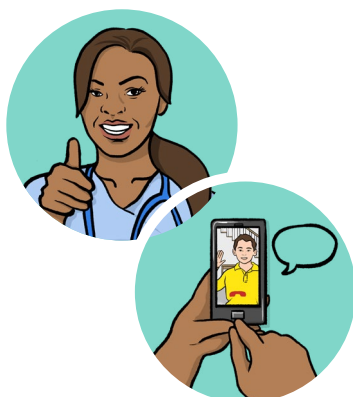
Our 3 main priorities for this winter are:



1. Making sure that everyone who needs care or support can get good quality services at the right time.



2. Protecting people who need care and care staff from COVID-19.



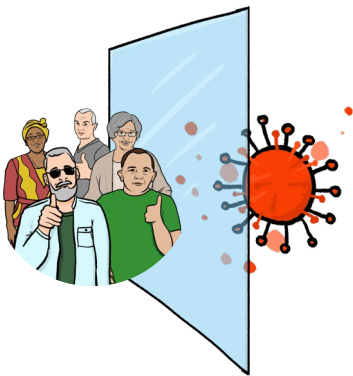
3. Making sure that people who need care are also:
 - getting the other services they need
 - keeping in touch with their friends and family.

What we have done



We have provided extra money to:

- local councils so they can keep services working



- care organisations to keep people safe from COVID-19



- help people to leave hospital safely



- pay for support for people to live at home so they don't have to go into hospital.

Throughout the COVID-19 outbreak the NHS has:



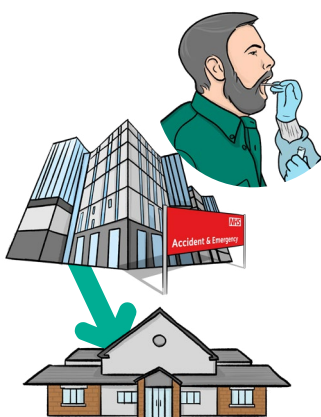
- supported care organisations by providing health services to the people they care for



- given expert advice about how to keep people safe



- given up-to-date information to care organisations



- tested people who are coming out of hospital and going into a care home



- looked at ways to keep people who have COVID-19 in care homes safe and away from other people



- helped people coming out of hospital to go back to their own home



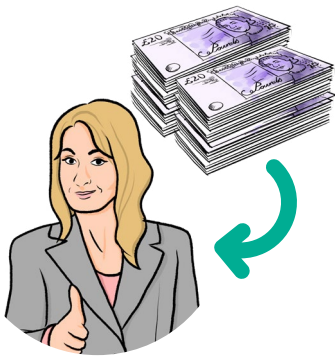
- made sure that care and support is always right for each individual person.

The Government



Through the winter the Government will:

- listen to and support local councils and care services



- give money to support care, including another:

- £500 million to care organisations to help stop people catching illnesses



- £588 million to help provide care for people who are leaving hospital



- £3.6 billion to help local councils handle the disease.



- help people focus on the needs of social care by creating a new job called Chief Nurse for Social Care

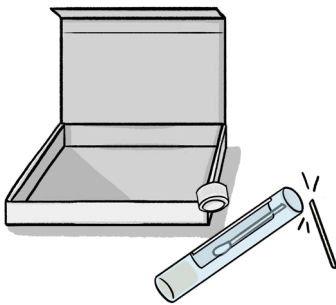


- set up safe places for people who leave hospital and need to go to a care home but have COVID-19



- keep everyone up-to-date with rules about keeping safe during the COVID-19 outbreak.

This includes making Easy Read versions of the rules



- work to make sure people can get a test for COVID-19 when they need one



- provide equipment and clothing to keep staff safe from COVID-19 to:

- care homes



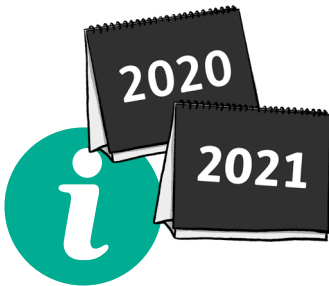
- organisations that provide social care.



- provide a **flu vaccine** to all health and care staff, and all unpaid carers. A **flu vaccine** is a jab which helps you to stop catching flu



- help local councils to make sure that care organisations are keeping people safe from COVID-19



- make sure we have up-to-date information so that we know when we have to change any of the rules



- tell people about any changes to the rules.

Local councils and the NHS



Local councils and NHS organisations should work together with care organisations.



Local councils and NHS organisations should:

- work together with people who use health and care services to decide how to improve services



- involve care organisations in deciding how to improve services



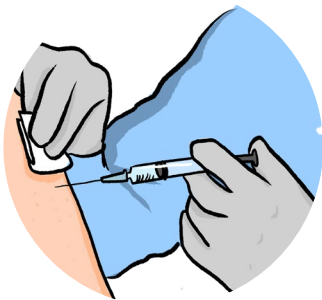
- make sure everyone has a fair chance to access health and care services



- follow the rules about testing and treating people with COVID-19



- provide special clothing and equipment to care organisations so their staff are safe from COVID-19



- help people to get a free flu vaccine



- support people to stay at home so they don't have to go into hospital so much.

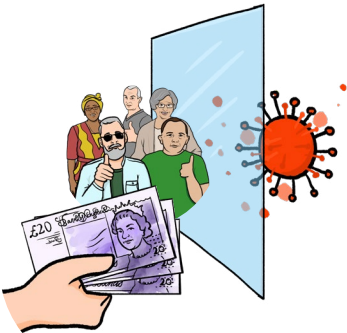


Local councils should:

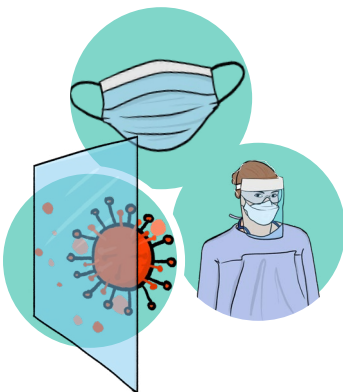
- make their own plans for health and care services this winter



- make sure that care organisations test people to see if they have caught COVID-19



- give money to care services to help them to keep people safe from COVID-19



- make sure care organisations know how to keep people safe from COVID-19



- work with local care services to open day services and respite services that have been shut because of COVID-19.



NHS organisations should support care homes to keep people healthy.

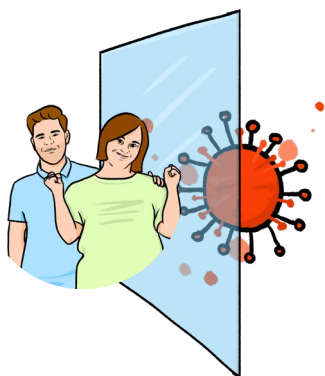


The **Director of Public Health** at your local council should set local rules about people visiting care homes.



There is a **Director of Public Health** in each local council. They set local rules about keeping safe.

Care organisations



Through the winter, care organisations should:

- work to keep the people they support and their staff safe from COVID-19



- have plans to make sure they can keep working. They should make sure there are enough staff who are healthy and able to work



- use the extra money they are getting to keep people safe



- tell the local council how well they are coping during the winter



- make sure people can get a test for COVID-19 when they need one



- tell the local health and council services if they don't have enough special clothing and equipment to keep people safe from COVID-19



- encourage people to get a free flu vaccine



- work out ways for family and friends to visit people in care homes safely.



Personal assistants should contact their local council to get free special clothing and equipment to keep themselves safe from COVID-19.

For more information



If you need more information please go to:

Website: www.gov.uk/dhsc