



HM Revenue  
& Customs

# UK property transactions statistics

## September 2020 provisional data update

### About this release

HM Revenue and Customs (HMRC) presents monthly estimates of residential and non-residential property transactions in the UK and its constituent countries. Figures are based upon records by HMRC, Revenue Scotland and the Welsh Revenue Authority (WRA) for Stamp Duty Land Tax (SDLT), Land and Buildings Transaction Tax (LBTT) and Land Transaction Tax (LTT) respectively.

### Additional information

The nil rate band for residential SDLT was increased to £500,000 from 8 July 2020 to 31 March 2021 for transactions in England and Northern Ireland.

From April 2020, transactions statistics have captured impacts from the coronavirus (COVID-19) and public health measures introduced by governments' in response.

### Headlines



The provisional seasonally adjusted estimate of UK residential transactions in September 2020 is 98,010, which is very similar to September 2019 at only 0.7% lower and 21.3% higher than August 2020.

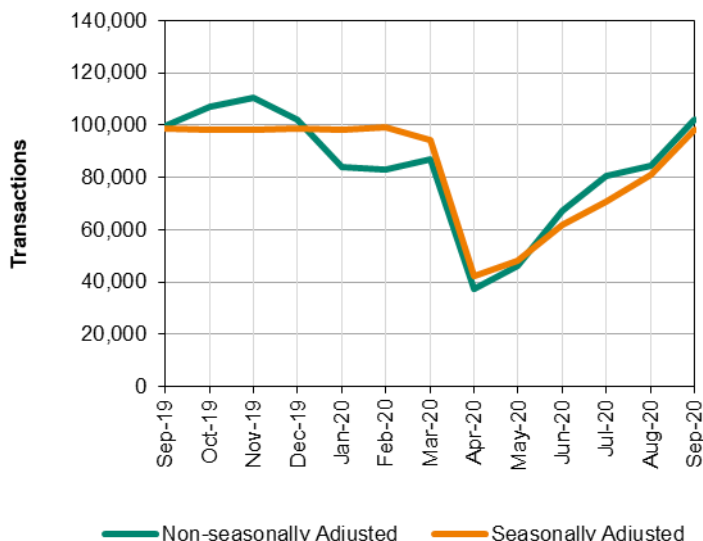


The provisional seasonally adjusted estimate of UK non-residential transactions in September 2020 is 9,160, 6.3% lower than September 2019 and 18.7% higher than August 2020.

### UK residential transactions

Chart 1: Provisional residential transactions estimates in September 2020 have noticeably increased compared to August 2020, likely due to the continued release of pent-up demand within the property market since March 2020 and early impacts from the temporarily increased nil rate band of SDLT.

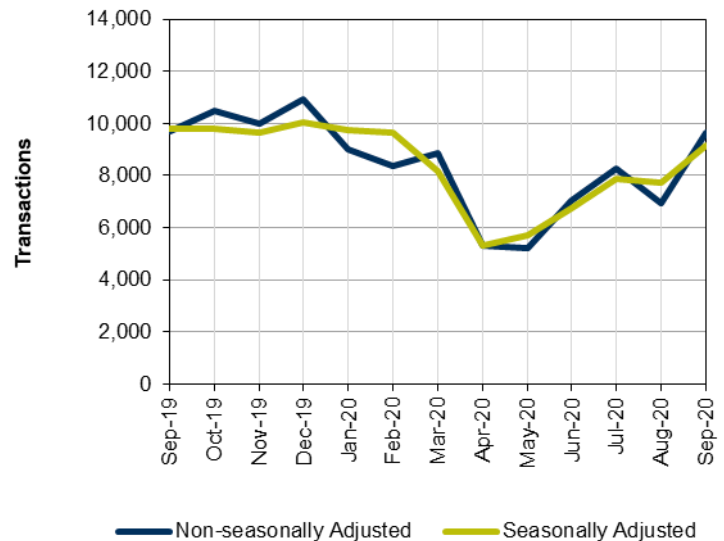
Total UK residential property transactions by month.



### UK non-residential transactions

Chart 2: The seasonally adjusted non-residential transactions estimate for September 2020 has increased compared to August 2020, but caution is advised due to the provisional status of latest figures.

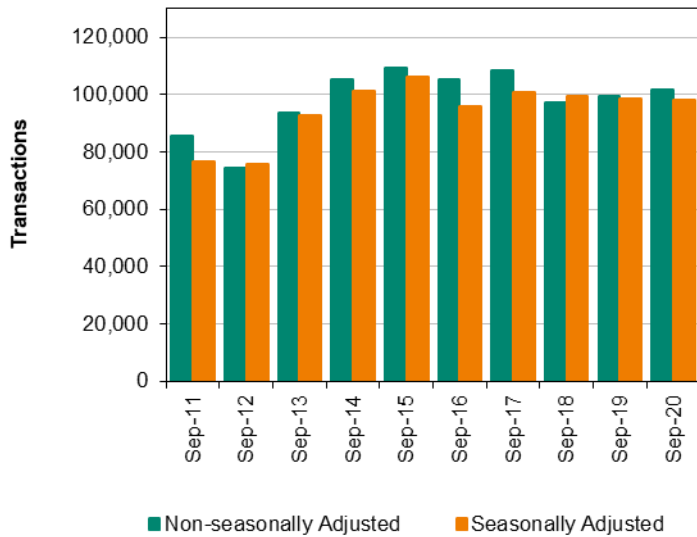
Total UK non-residential property transactions by month.



# UK residential transactions

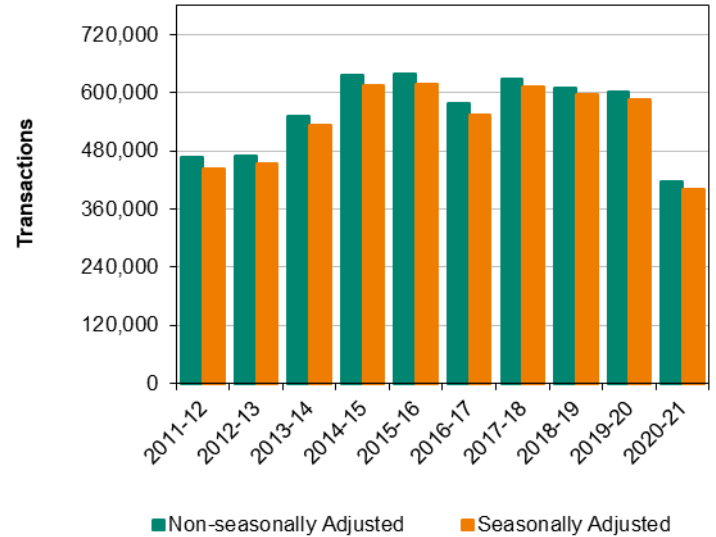
**Chart 3: Residential transactions estimates in September 2020 are comparable to levels reported in recent years.**

Year-on-year residential transactions (September 2011 to September 2020).



**Chart 4: Impacts from coronavirus are evident within the provisional 2020-21 year-to-date residential transactions total.**

Year-to-date residential transactions (2011-12 to 2020-21).

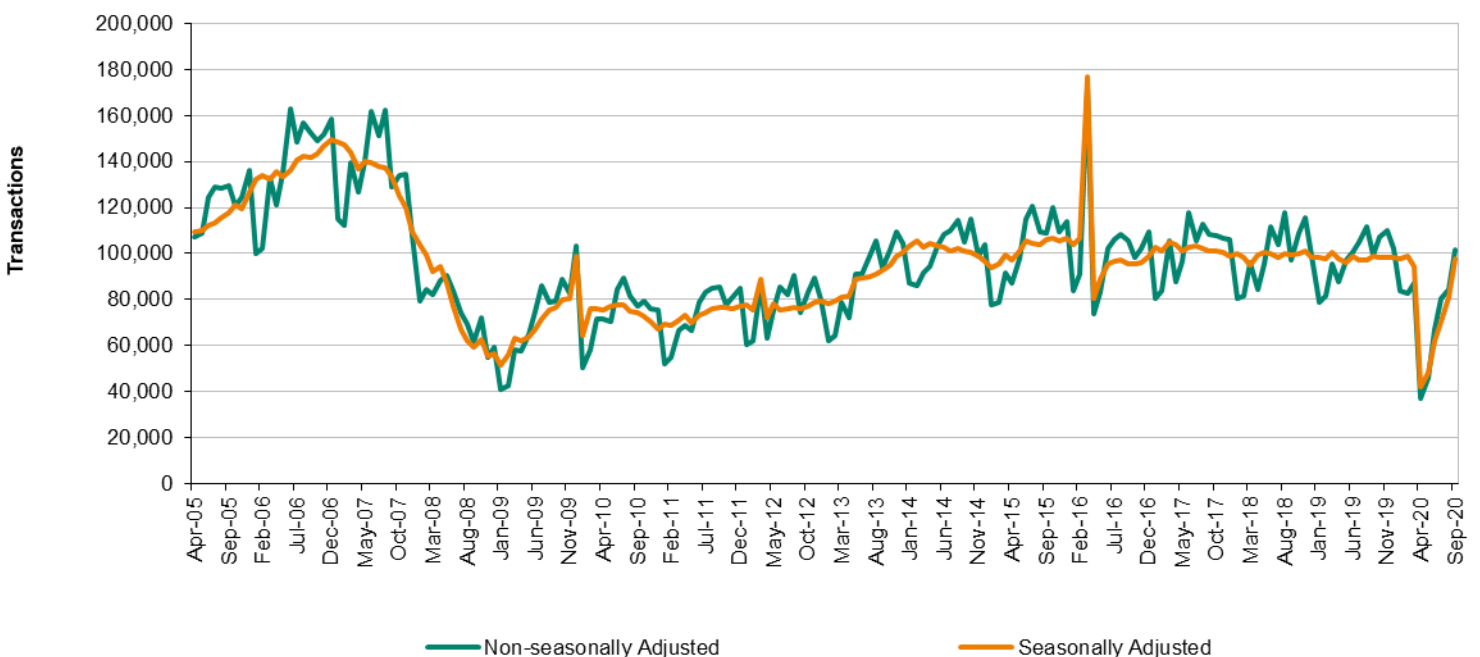


The provisional non-seasonally adjusted estimate of UK residential transactions in September 2020 is 101,920, 2.4% higher than September 2019 and 20.7% higher than August 2020.

## Historic residential transactions

**Chart 5: Residential transactions decreased significantly in April 2020, reflecting impacts from coronavirus and public health measures in response. Provisional transactions have since gradually increased month-on-month.**

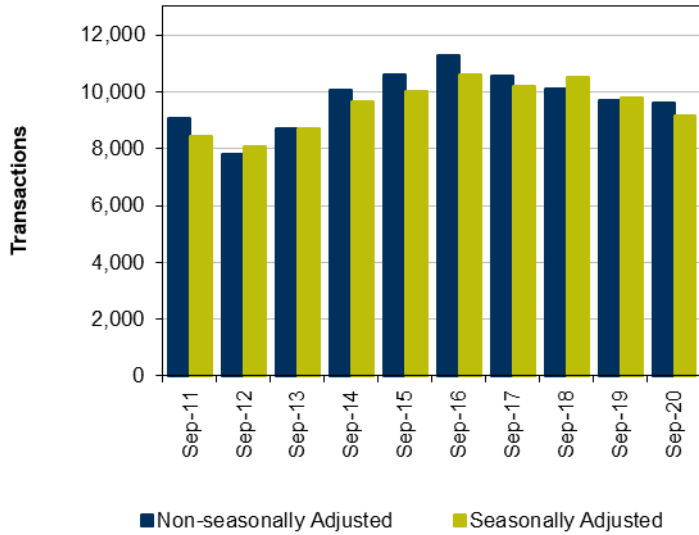
Historic UK residential property transactions (2005 to 2020).



# UK non-residential transactions

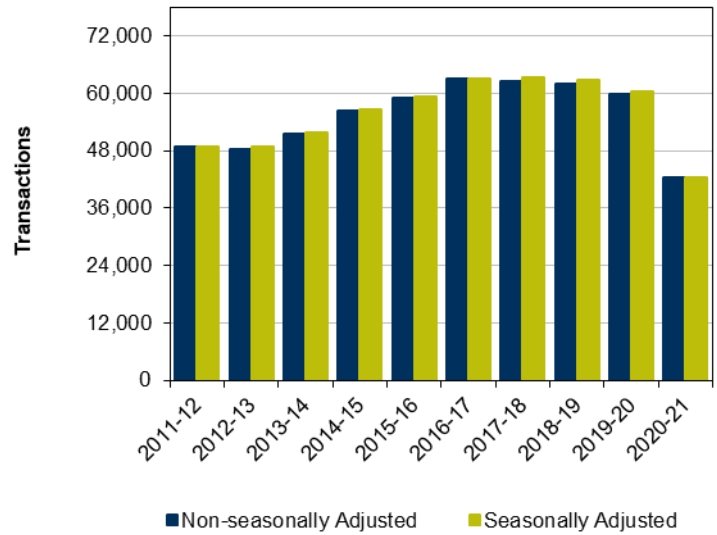
**Chart 6: Non-residential transactions estimates in September 2020 are comparable to levels reported in previous years.**

Year-on-year non-residential transactions (September 2011 to September 2020).



**Chart 7: Impacts from coronavirus are evident within the provisional 2020-21 year-to-date non-residential transactions total.**

Year-to-date non-residential transactions (2011-12 to 2020-21).

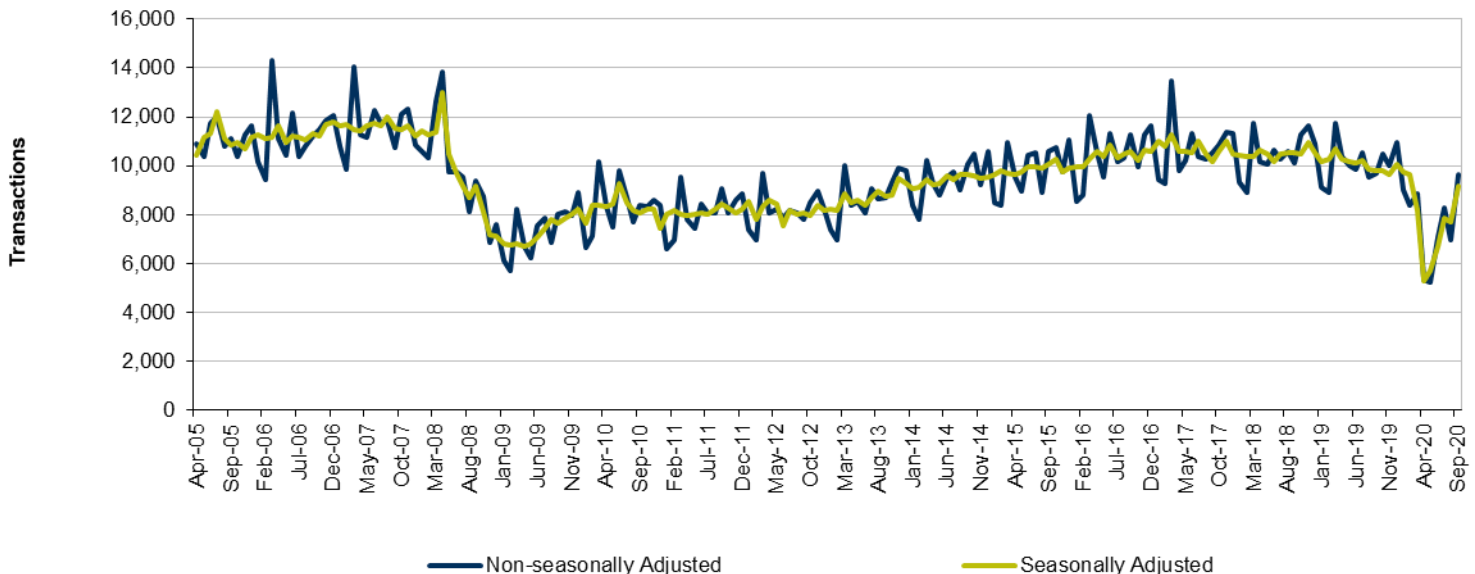


The provisional non-seasonally adjusted estimate of UK non-residential transactions in September 2020 is 9,630, 0.6% lower than September 2019 and 38.5% higher than August 2020.

## Historic non-residential transactions

**Chart 8: Non-residential transactions decreased significantly in April 2020, reflecting impacts from coronavirus and public health measures in response. Provisional transactions have since gradually increased month-on-month.**

Historic UK non-residential property transactions (2005 to 2020).



This statistical release is produced by Mark Armstrong-Wood and Simon Taylor of the Indirect Tax Receipts Monitoring team. For statistical questions, email [revenue@hmrc.gov.uk](mailto:revenue@hmrc.gov.uk). For Press Office, ring phone number 03000 585 024.