



Weekly Influenza and COVID-19 Surveillance graphs

PHE publishes a weekly national influenza and COVID-19 surveillance report which summarises the information from the surveillance systems which are used to monitor influenza, COVID-19 and other seasonal respiratory viruses in England.

Additional figures based on these surveillance systems are included in this slide set.

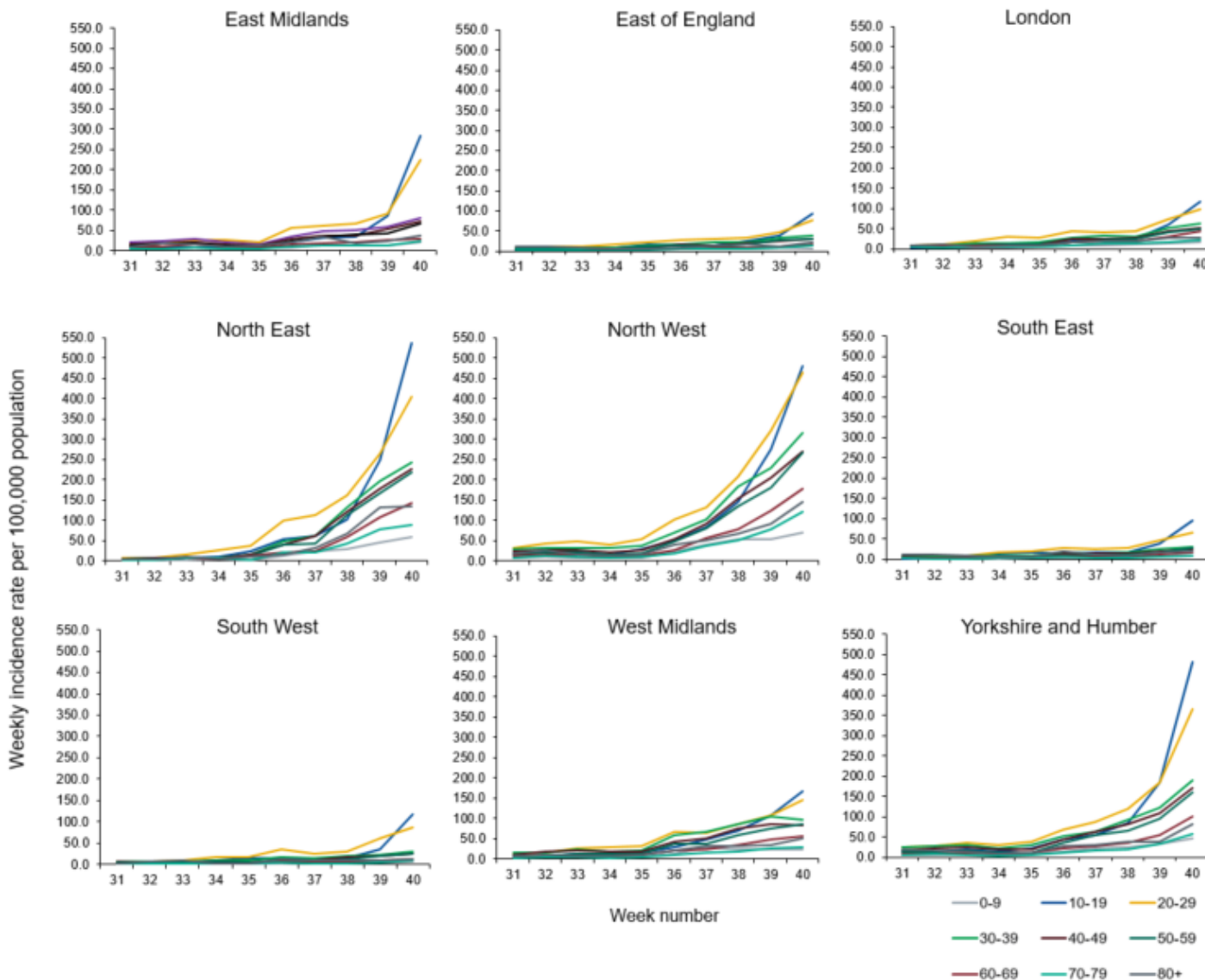
The figures presented in this slide set are based on data from week 40 (between 28 September and 4 October 2020).



Confirmed COVID-19 cases in England

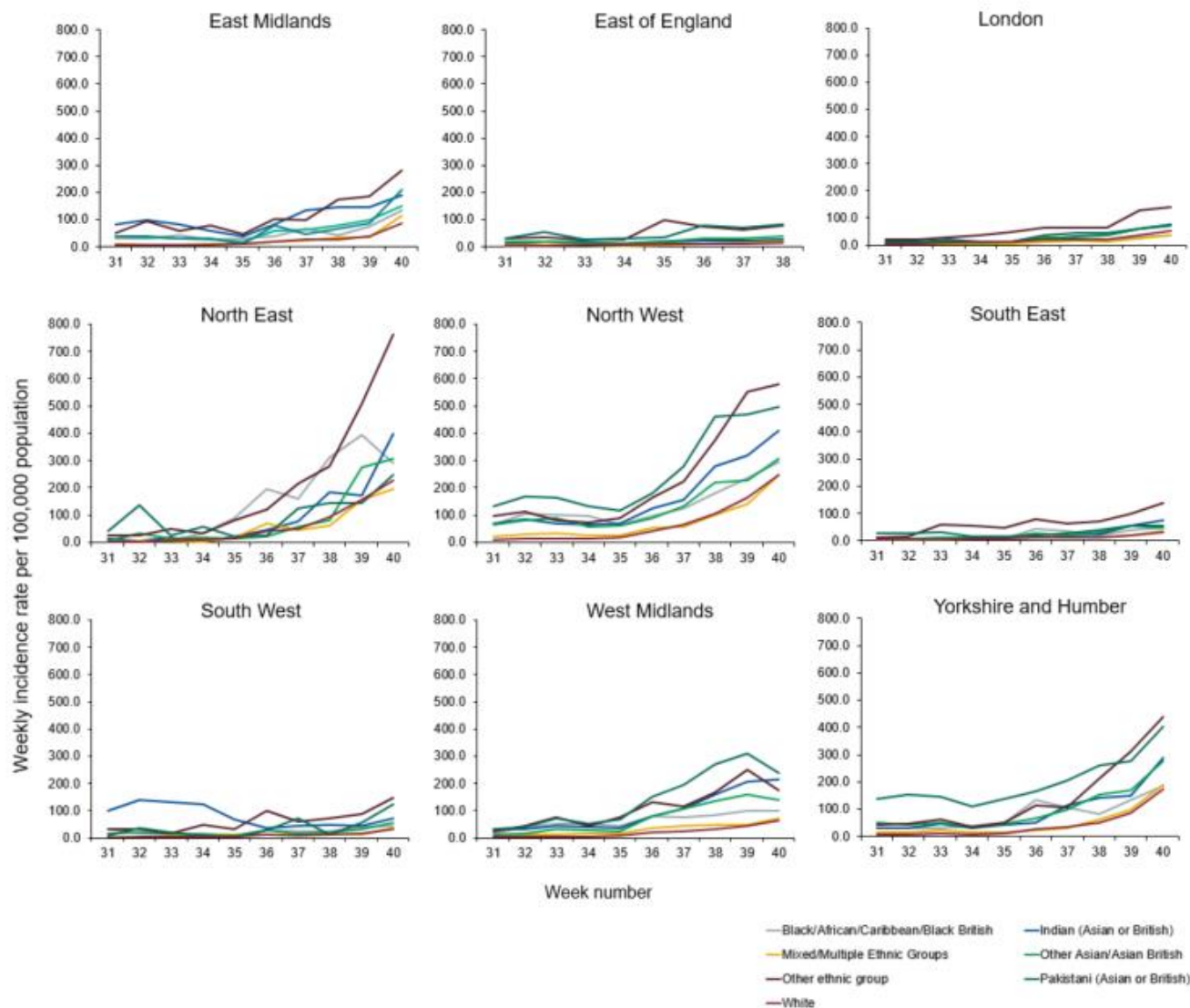


Weekly COVID-19 incidence per 100,000 population by age group and region, weeks 31-40



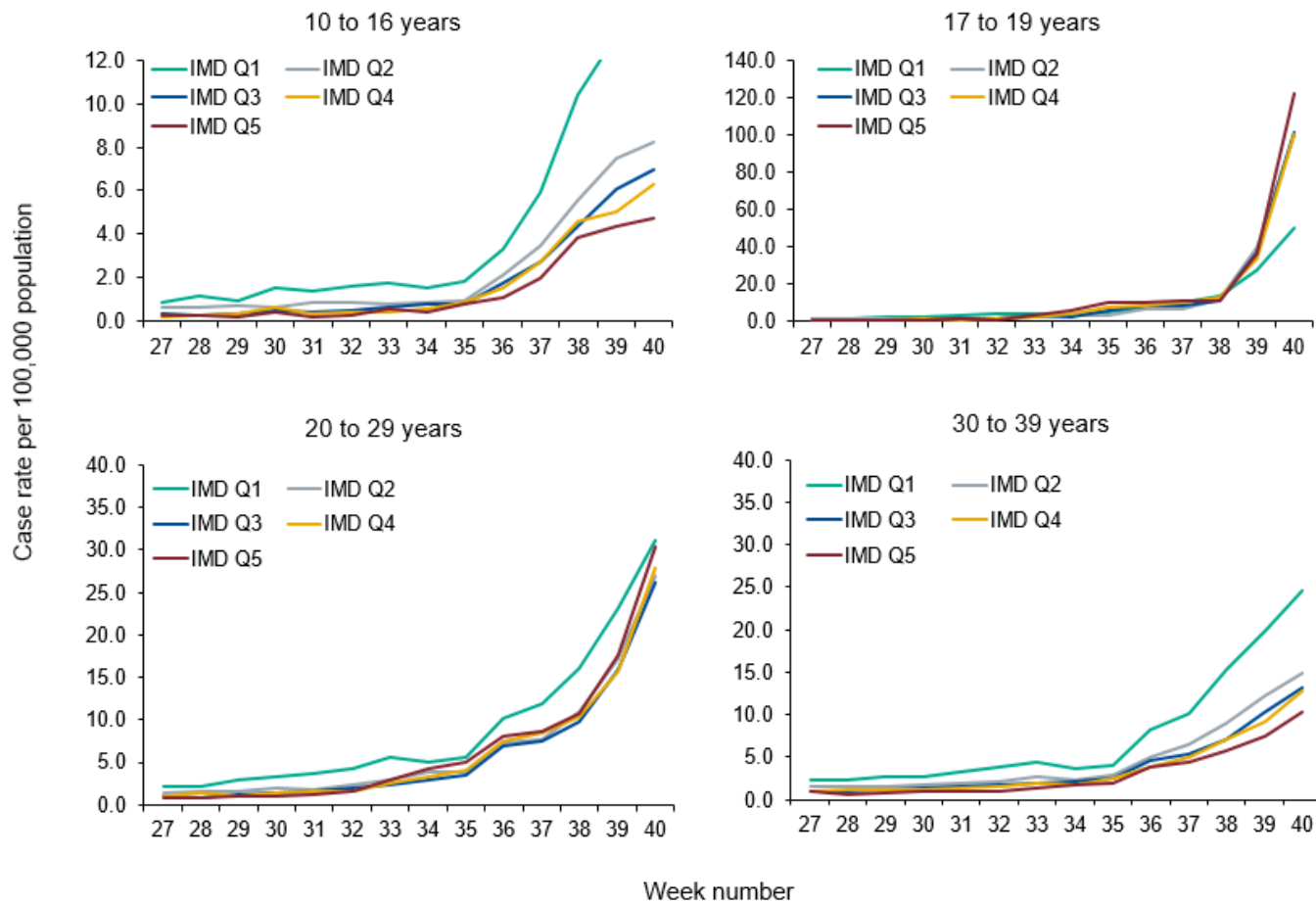


Weekly COVID-19 incidence per 100,000 population by age ethnicity and region, weeks 31-40



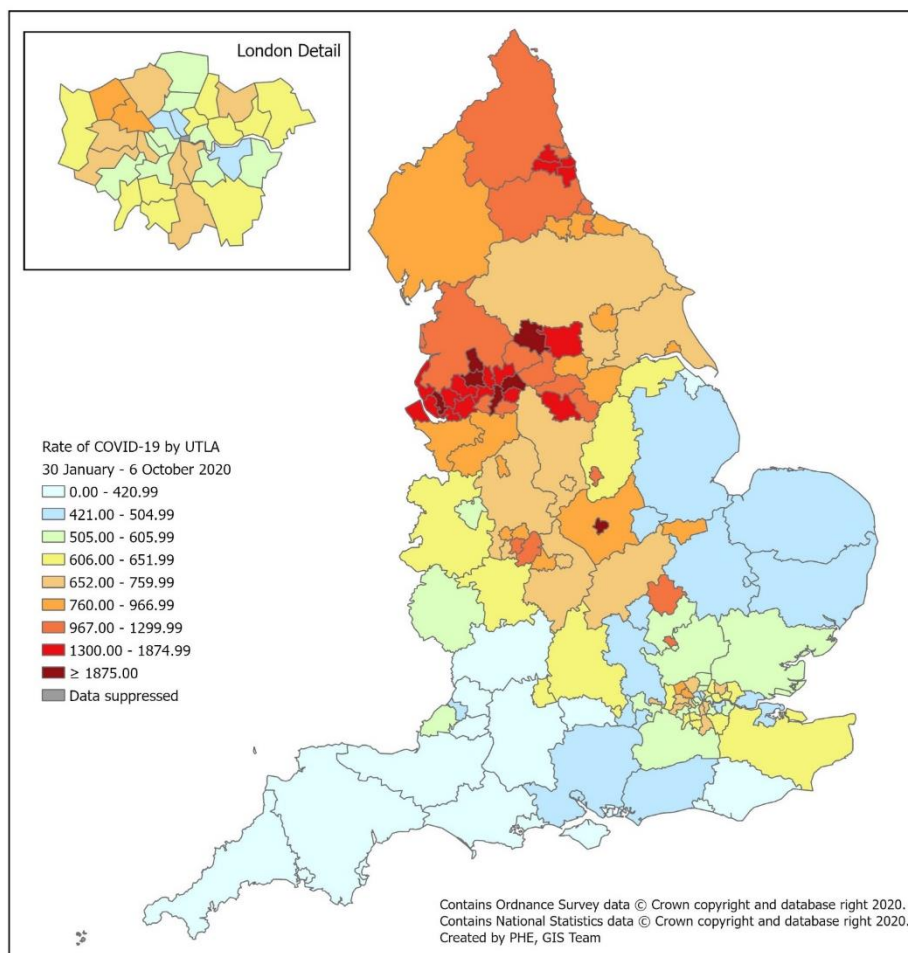


Weekly COVID-19 rate per 100,000 population by IMD quintile (1 being the most deprived and 5 being the least deprived), weeks 27-40



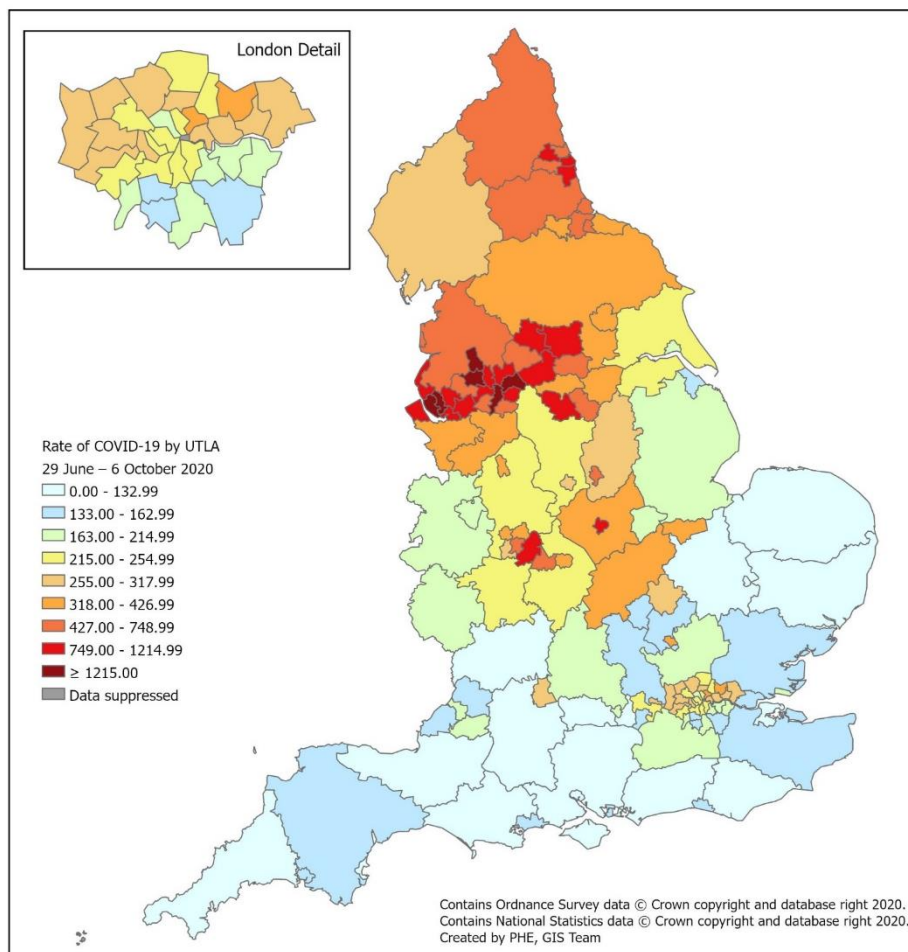


Cumulative rate of COVID-19 cases per 100,000 population tested under Pillar 1 and 2, by upper-tier local authority, England (box shows enlarged map of London area)





Cumulative rate (from week 27) of COVID-19 cases per 100,000 population tested under Pillar 1 and 2, by upper-tier local authority, England (box shows enlarged map of London area)



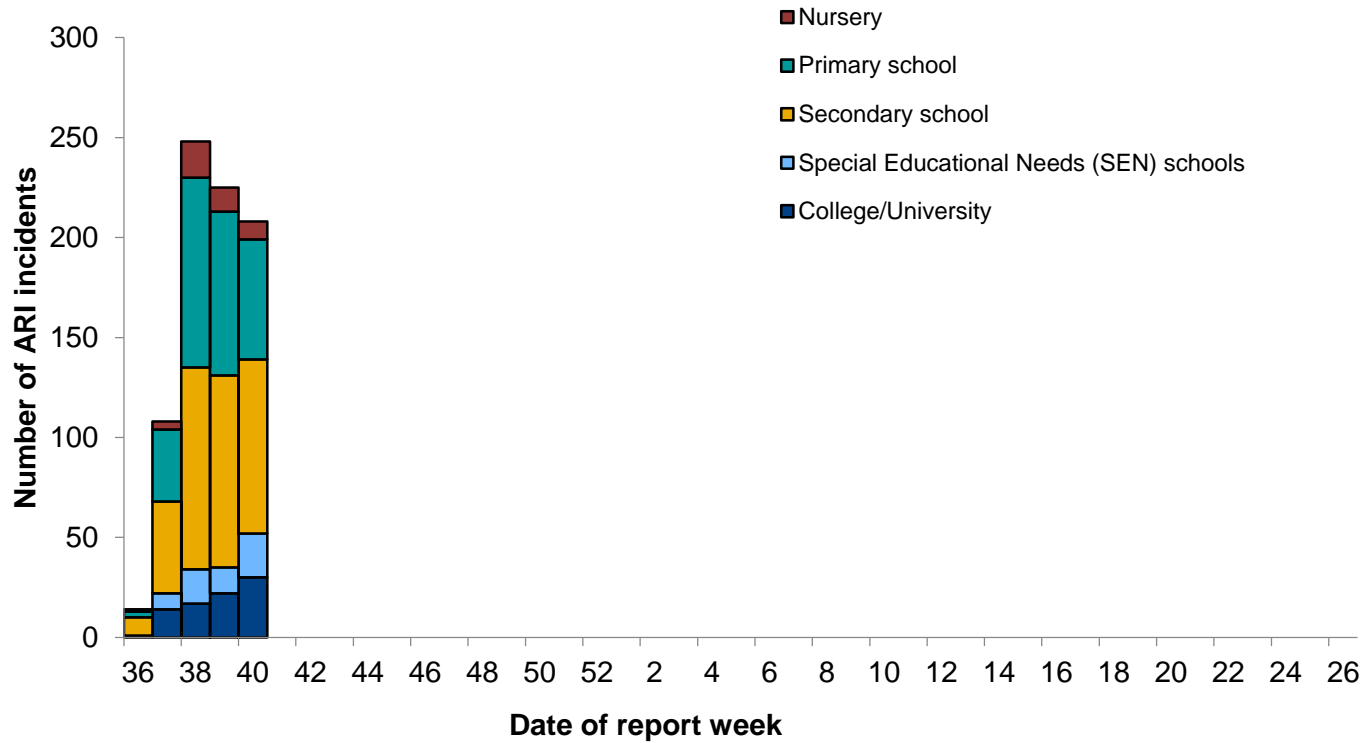


Public Health
England

Community surveillance



Number of COVID-19 confirmed clusters or outbreaks by type of educational setting,





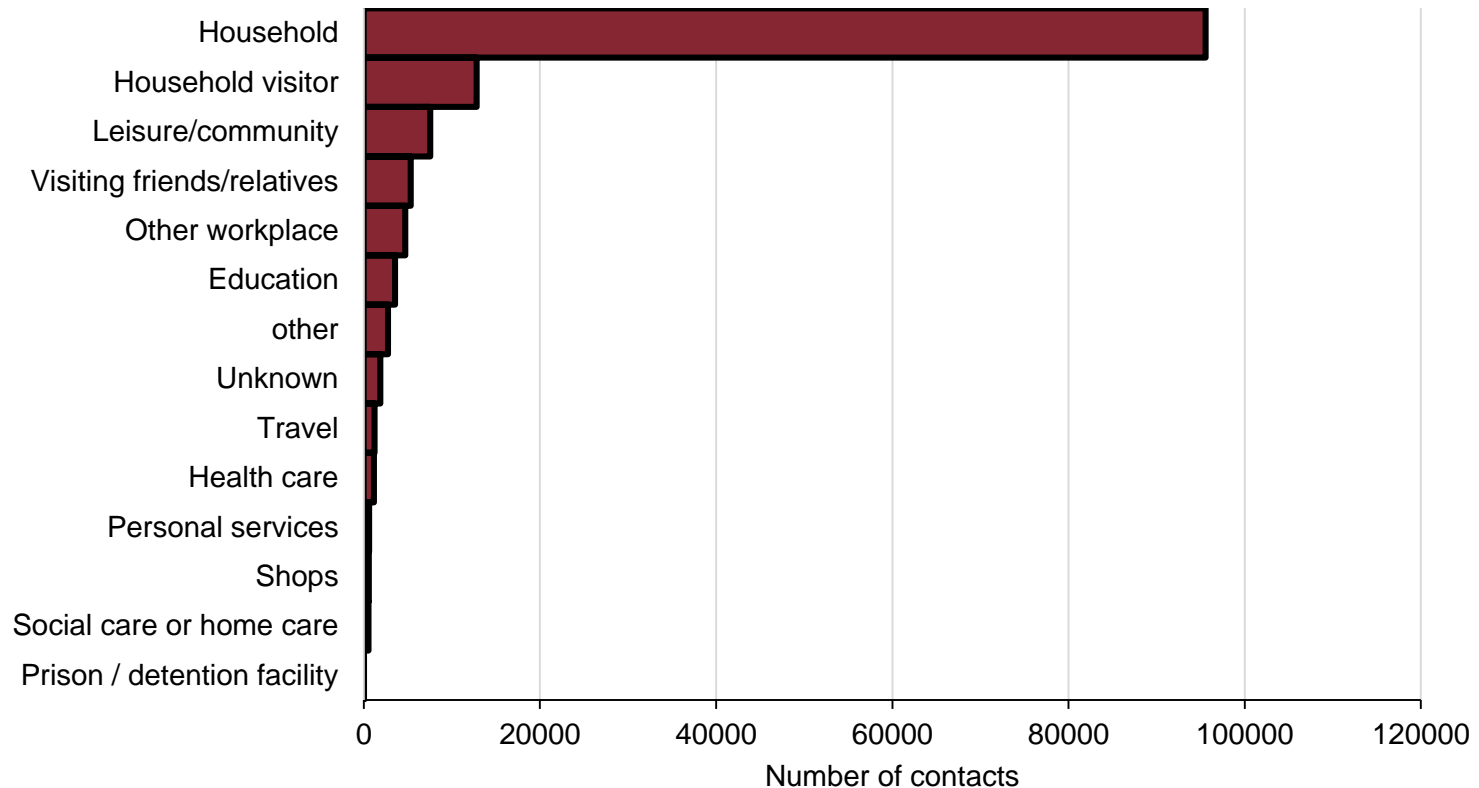
Cumulative number of confirmed COVID-19 clusters or outbreaks by type of educational setting and PHE Centre since week 36, England

PHE Centres	Cumulative number of confirmed COVID-19 clusters or outbreaks by type of educational setting					
	Nursery	Primary School	Secondary School	Special Educational Needs (SEN) schools	College University	Total
East Midlands Centre	2 (0)	20 (2)	23 (7)	4 (2)	12 (3)	61 (14)
East of England Centre	3 (0)	12 (1)	18 (4)	4 (2)	4 (0)	41 (7)
London Centre	7 (1)	56 (16)	75 (28)	9 (1)	19 (6)	166 (52)
North East Centre	0	10 (2)	14 (1)	5 (4)	4 (2)	33 (9)
North West Center	11 (3)	46 (5)	59 (5)	20 (9)	9 (1)	147 (23)
South East Centre	6 (0)	5 (2)	23 (9)	3 (0)	4 (3)	39 (14)
South West Centre	2 (0)	10 (2)	12 (2)	2 (0)	4 (2)	30 (6)
West Midlands Centre	6 (2)	81 (13)	70 (13)	4 (1)	15 (8)	176 (37)
Yorkshire & the Humber	7 (3)	36 (17)	45 (18)	10 (3)	12 (5)	110 (46)
Total	44 (9)	276 (60)	339 (87)	61 (22)	83 (30)	803 (208)

*Number of outbreaks for Week 40 (28/09/2020 – 04/10/2020) in brackets



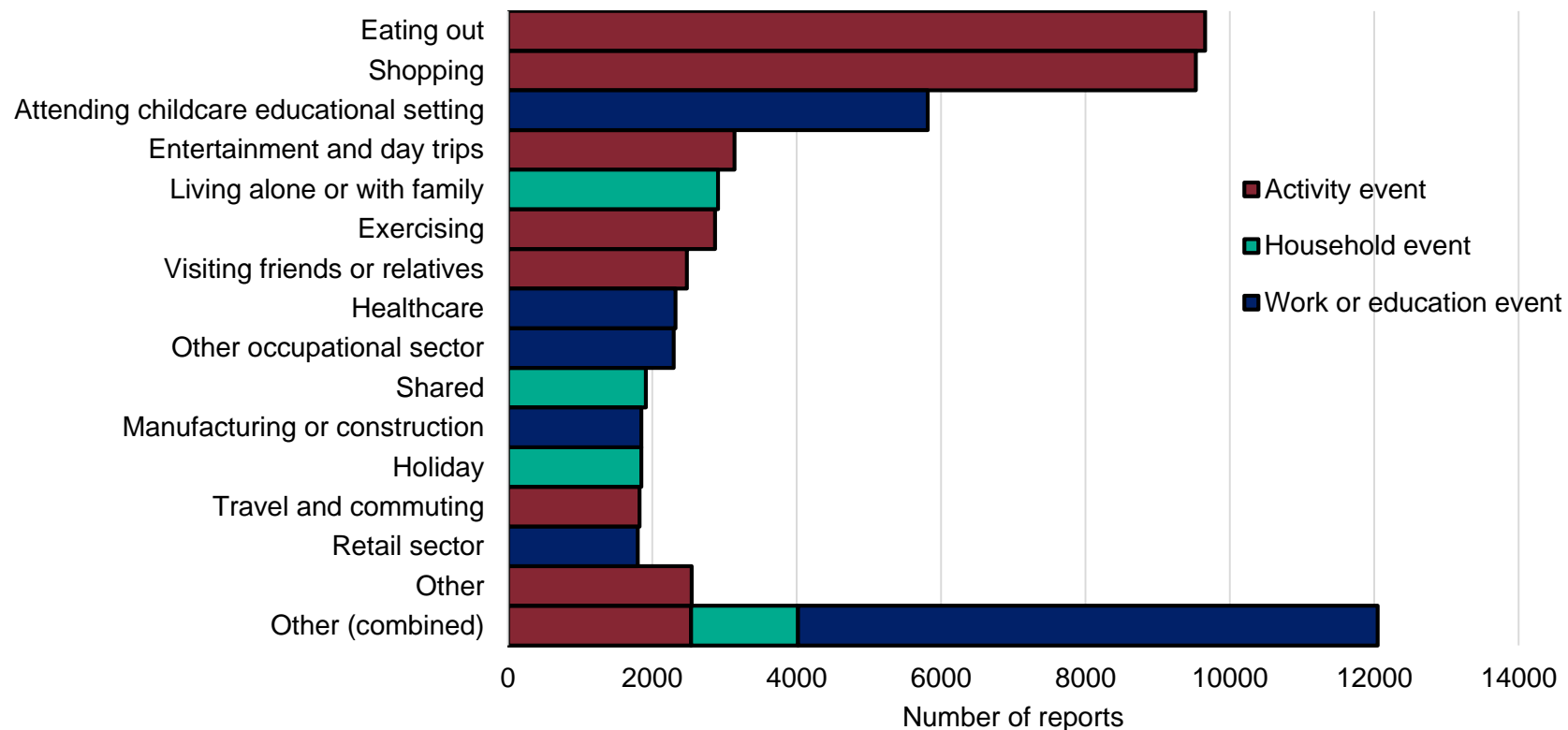
Contacts by exposure/activity setting in week 40, England (Data source: NHS Test and Trace)



Note: categories have been grouped as follows: leisure / community includes eating out, attending events and celebrations, exercising, worship, arts, entertainment or recreation, community activities and attending play groups or organised trips; other workplace includes: retail, manufacturing or construction, hospitality, transport, emergency services or border force, food production and agriculture, prison, financial services, civil service or local government, information and communication, military, critical national infrastructure. Personal services includes hairdressers, barbers, tattooists and nail bars.



Events and activities reported by people testing positive, prior to symptom onset in week 40, England (Data source: NHS Test and Trace)



Note: 'Other' includes a wide range of different activities and settings, each of which has small numbers of individuals, as well as activities which did not fit any specific category and were added as Other by the case. This includes:

(all within 'activities': Arts entertainment or recreation; Civil service or government; Close contact services; Community and charity activities; Critical national infrastructure; Emergency services; Financial services; Food production; Hospitality; Immigration border services; Information and communication; Military; Personal care; Prison; Private events and celebrations; Public events and mass gathering; event within a shared household; Sport events; Supported living; Teaching and education; Transport;

'Other (combined)' includes all exposure group types that have small counts such as "went to church", "went to the zoo" within that event type.

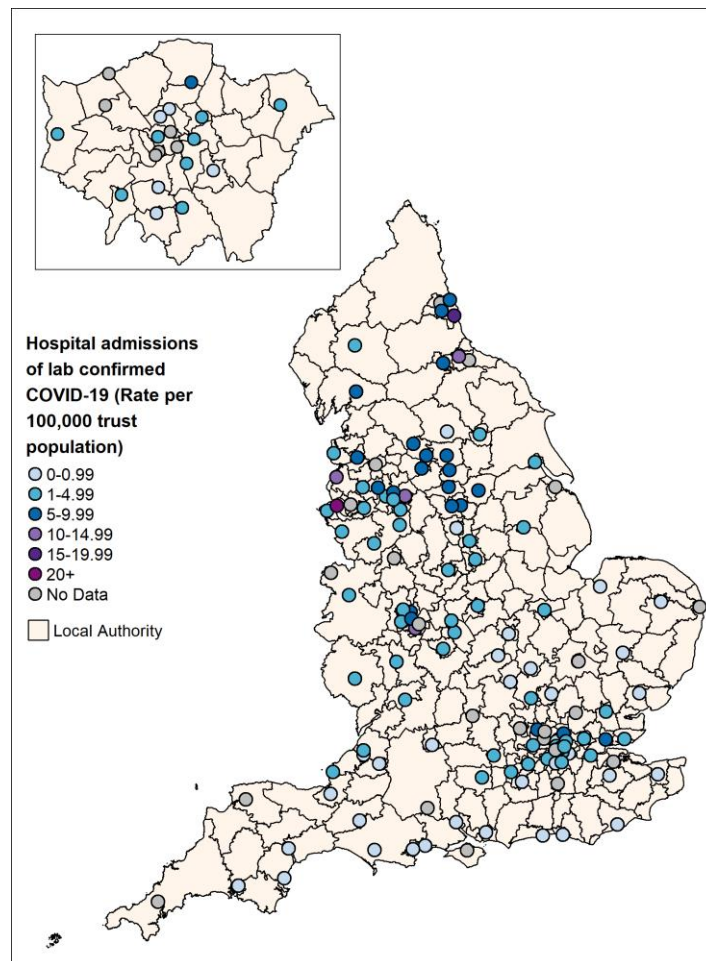


Public Health
England

Secondary Care surveillance

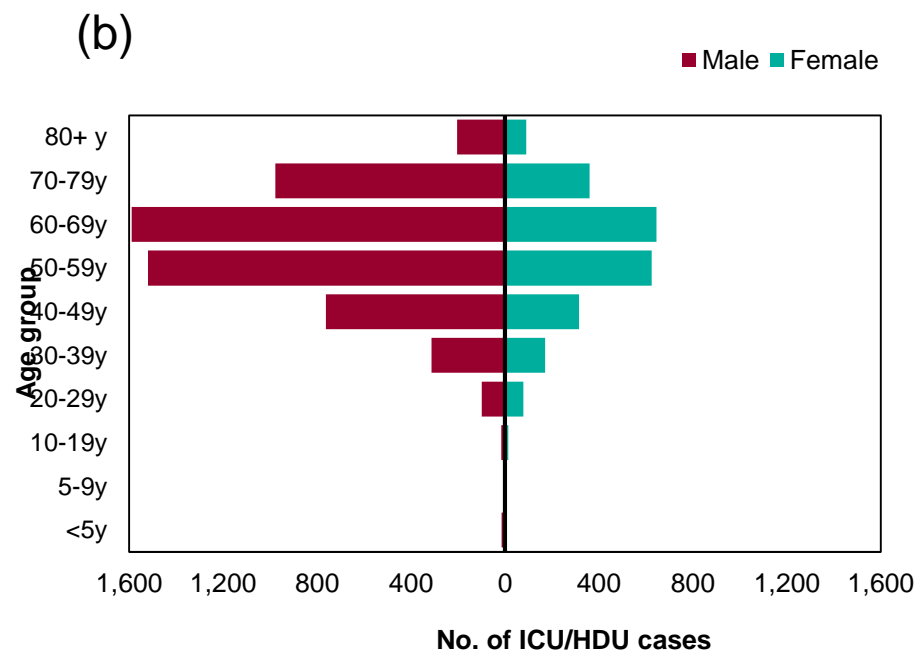
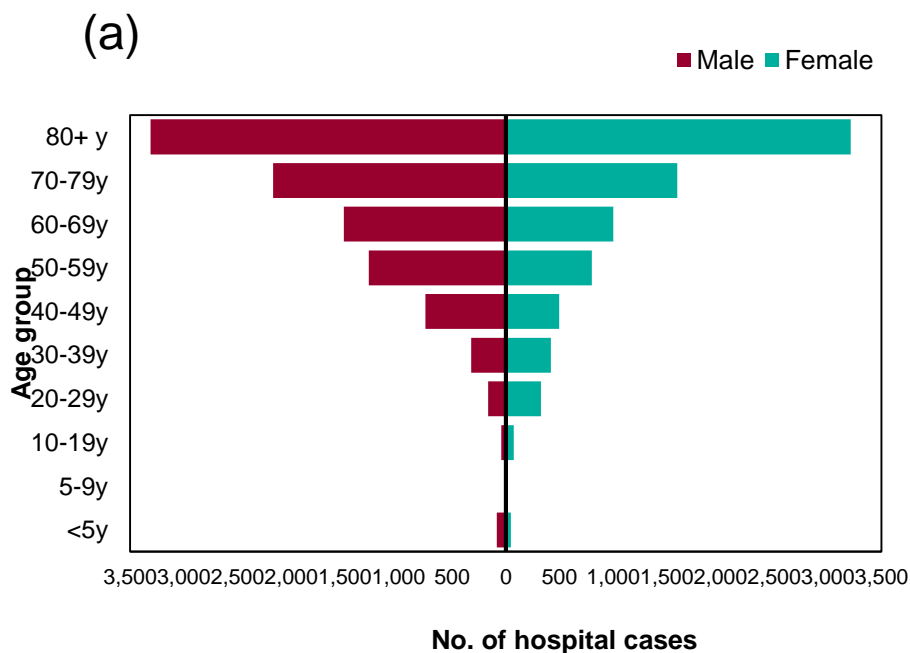


Weekly admission rates for hospital laboratory confirmed COVID-19 cases reported through SARI Watch, week 40





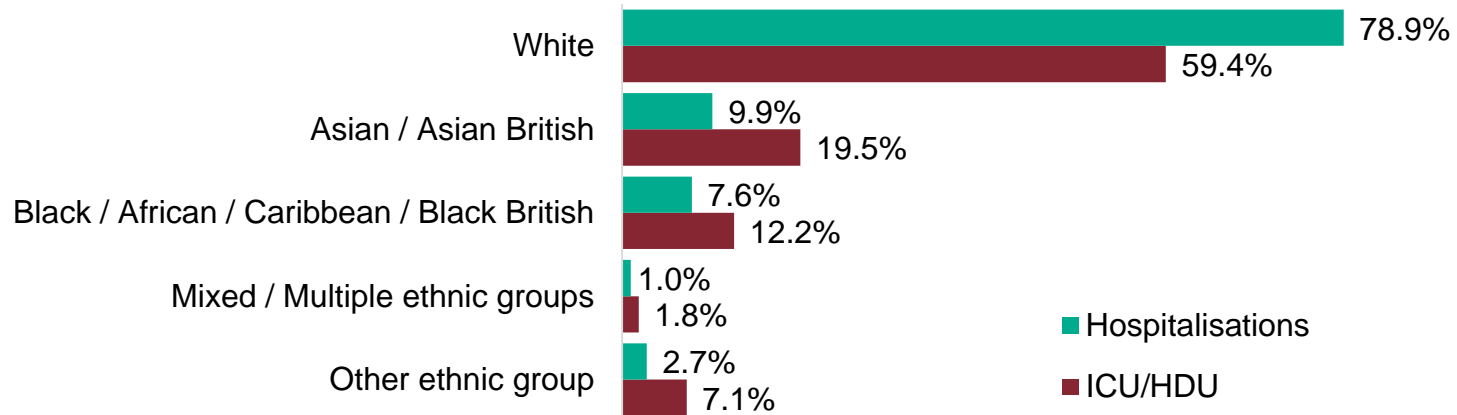
Age/sex pyramid of new (a) hospital (lower level of care) (n=17,627) and (b) ICU/HDU (n=7,804) COVID-19 cases reported through SARI Watch, England



This figure is based on individual patient level data which are provided to SARI Watch from a subset of NHS Acute Trusts, therefore the data should be interpreted with caution as the distribution of age, sex and ethnic group may not be representative of all hospitalised patients.



Ethnic group of new hospitalisations (lower level of care) (n=16,981) and ICU/HDU (n=7,214) COVID-19 cases reported through SARI Watch, England



proportion of admitted cases (%)

This figure is based on individual patient level data which are provided to SARI Watch from a subset of NHS Acute Trusts, therefore the data should be interpreted with caution as the distribution of age, sex and ethnic group may not be representative of all hospitalised patients.



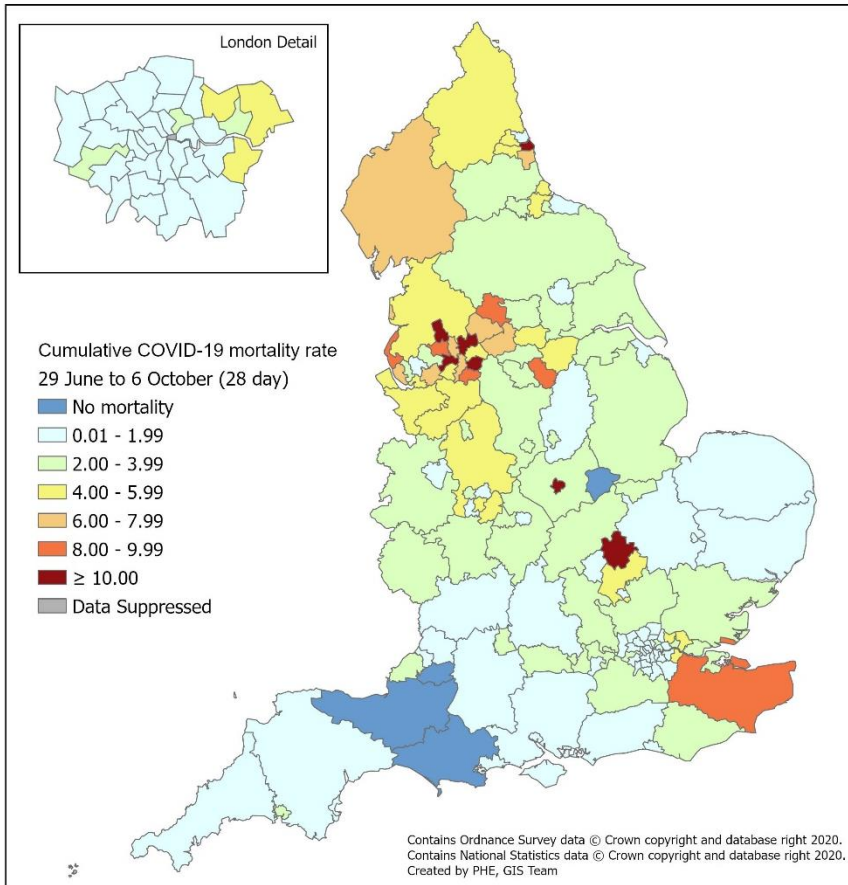
Public Health
England

Mortality surveillance



Cumulative mortality rate of COVID-19 cases per 100,000 population tested under Pillar 1 and 2 since week 27 by (a) 28 day definition and (b) 60 day definition

(a)



(b)

