

The weekly surveillance report in England

Coronavirus (COVID-19) weekly data: 23 September 2020 to 29 September 2020

Breakdown of testing by Pillars of the UK Government's COVID-19 testing programme:

Pillar 1 + 2
combined data from both Pillar 1 and Pillar 2 of the UK Government's COVID-19 testing programme

Pillar 1
data from swab testing in PHE labs and NHS hospitals for those with a clinical need, and health and care workers

Pillar 2
data from swab testing for the wider population, as set out in government guidance

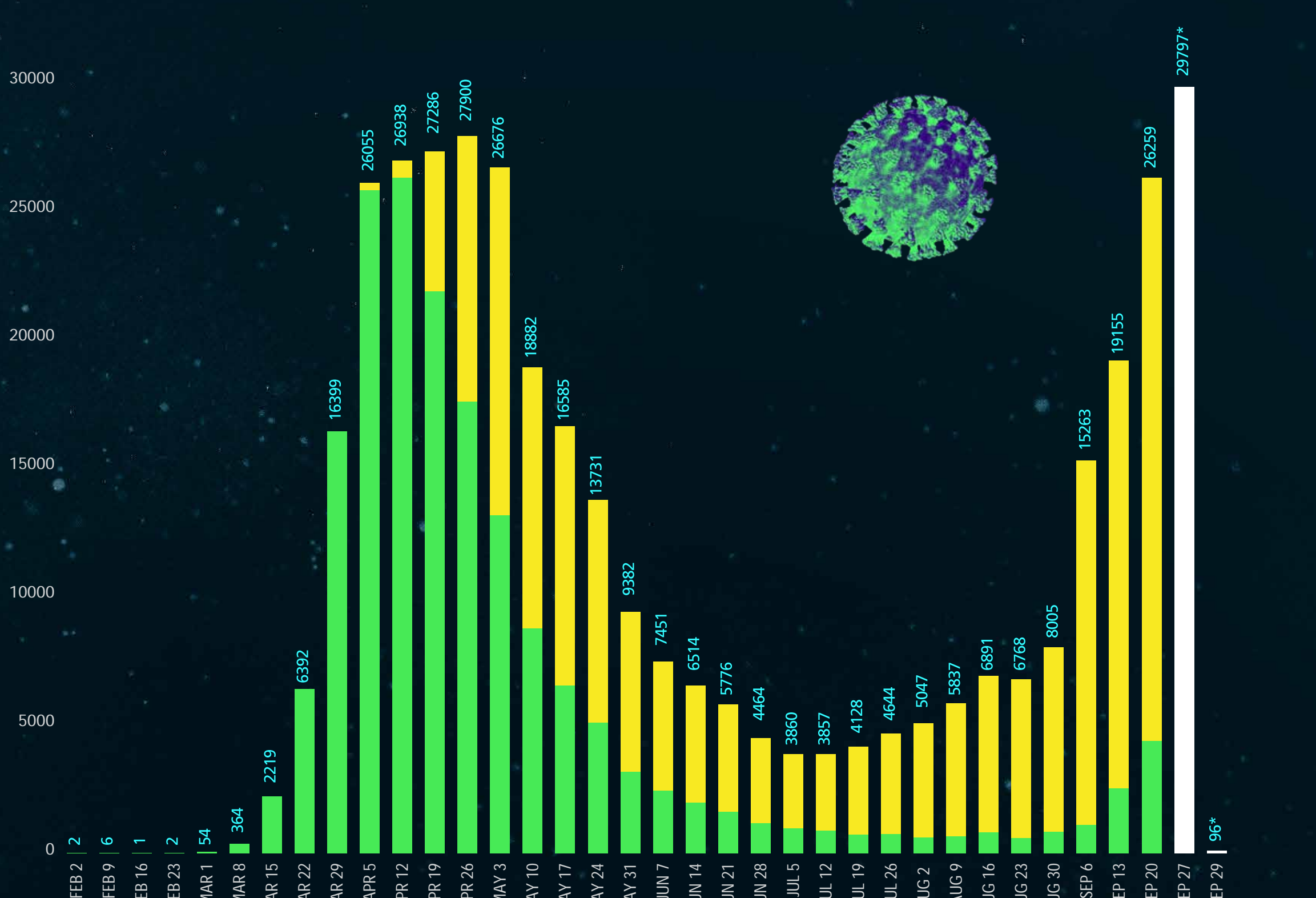
Pillar 4
data from swab testing for PHE, the Office for National Statistics (ONS), research, academic, and scientific partners

Cases data

total number of COVID-19 cases since 30 January 2020 (Pillar 1+2)
382,686

number of COVID-19 cases since 29 June 2020 (Pillar 1+2)
139,607

number of COVID-19 cases reported from this week: 23-29 September 2020 (Pillar 1+2)
34,844



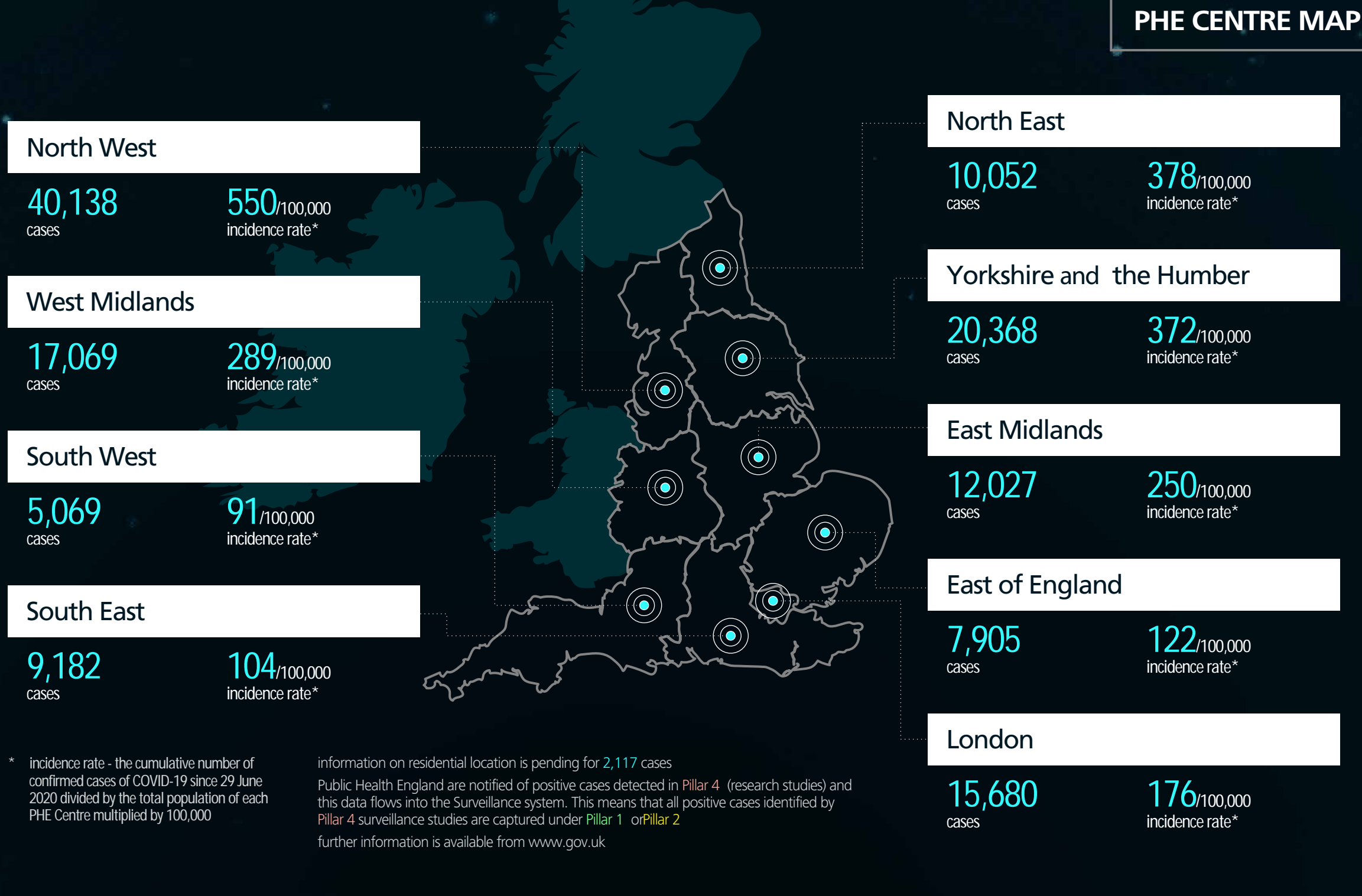
EPIDEMIC CURVE

* the most recent week is a partial week and only data from more than five days ago can be considered complete. The data are shown by the week the specimen was taken. All data may be subject to change over time.

29 June 2020 to 29 September 2020 in England

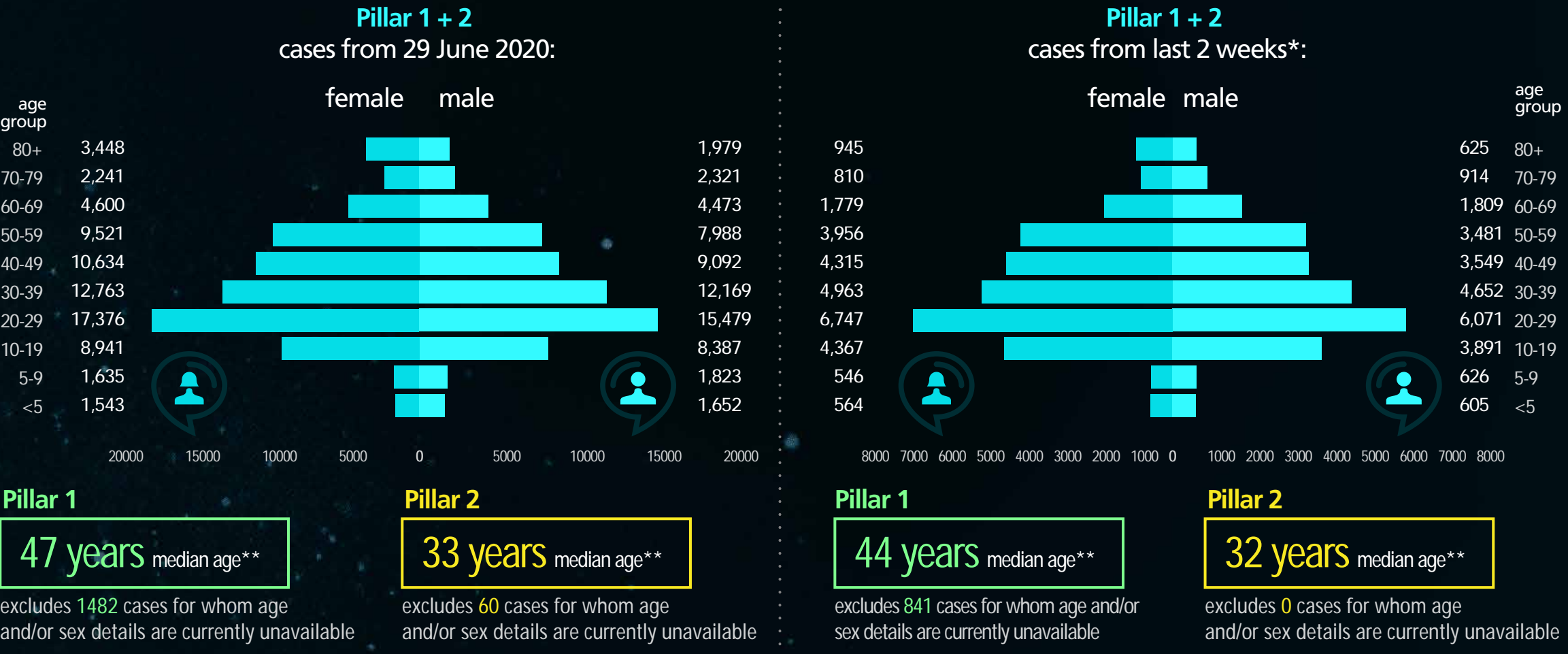
data are presented from 29 June 2020 onwards below to show recent epidemiological patterns of COVID-19 in England

PHE CENTRE MAP



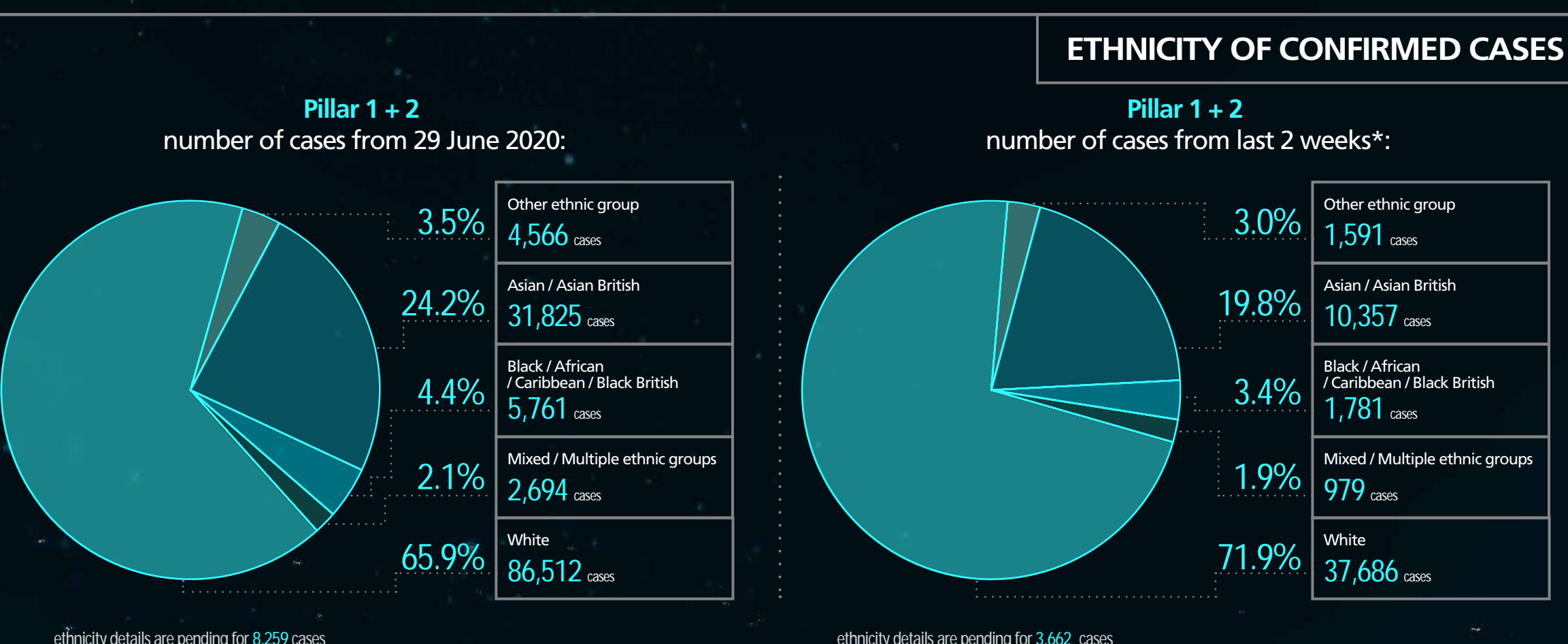
* Incidence rate - the cumulative number of confirmed cases of COVID-19 since 29 June 2020 divided by the total population of each PHE Centre multiplied by 100,000. Information on residential location is pending for 2,117 cases. Public Health England are notified of positive cases detected in Pillar 4 (research studies) and this data flows into the Surveillance system. This means that all positive cases identified by Pillar 4 surveillance studies are captured under Pillar 1 or Pillar 2. Further information is available from www.gov.uk

POPULATION PYRAMID OF CASES



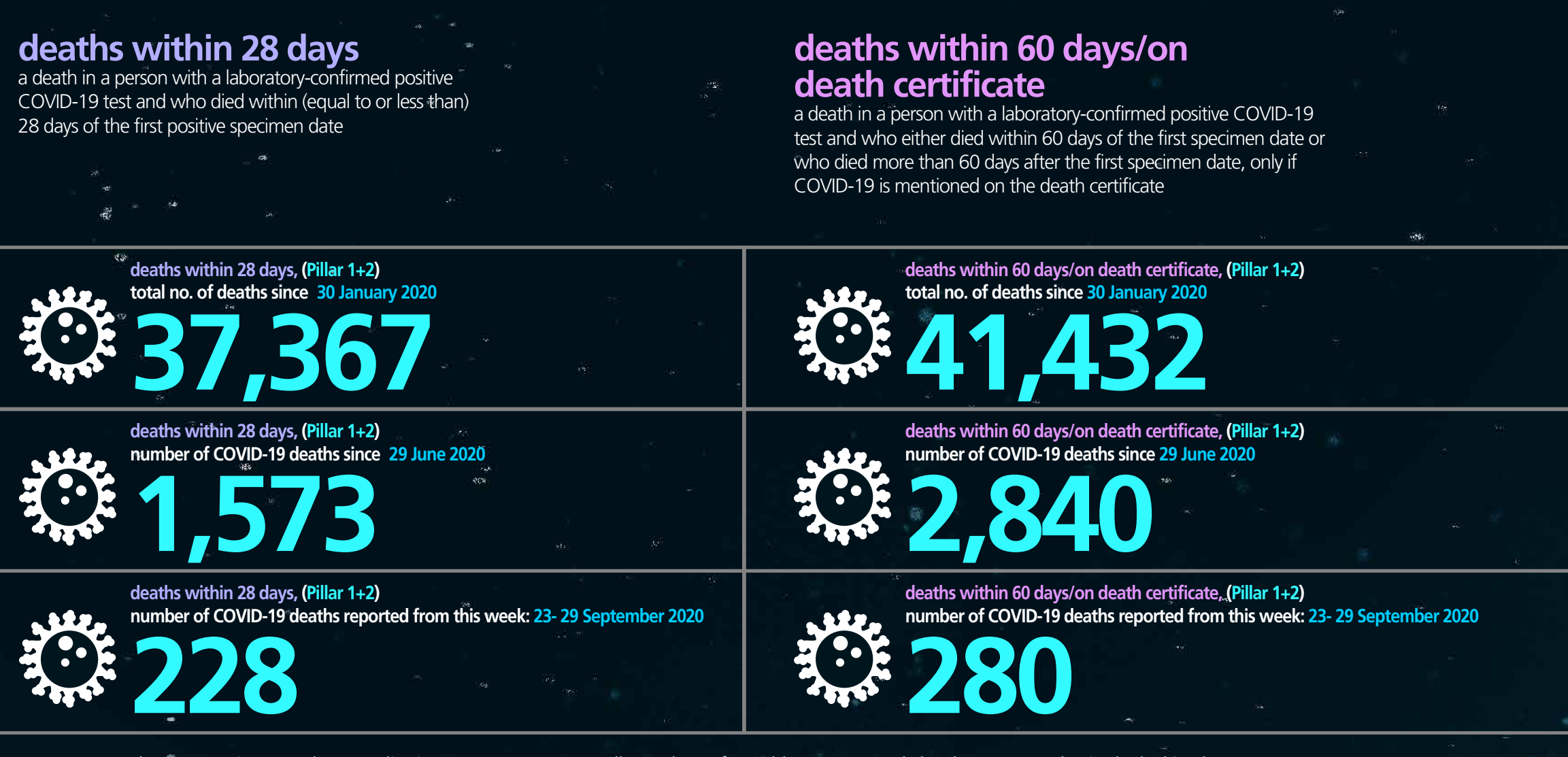
** median age is the middle value in a range - half of the cases are younger than this age and half are older. * last 2 weeks - 14 September to 27 September (data as available on 29 September 2020)

ETHNICITY OF CONFIRMED CASES



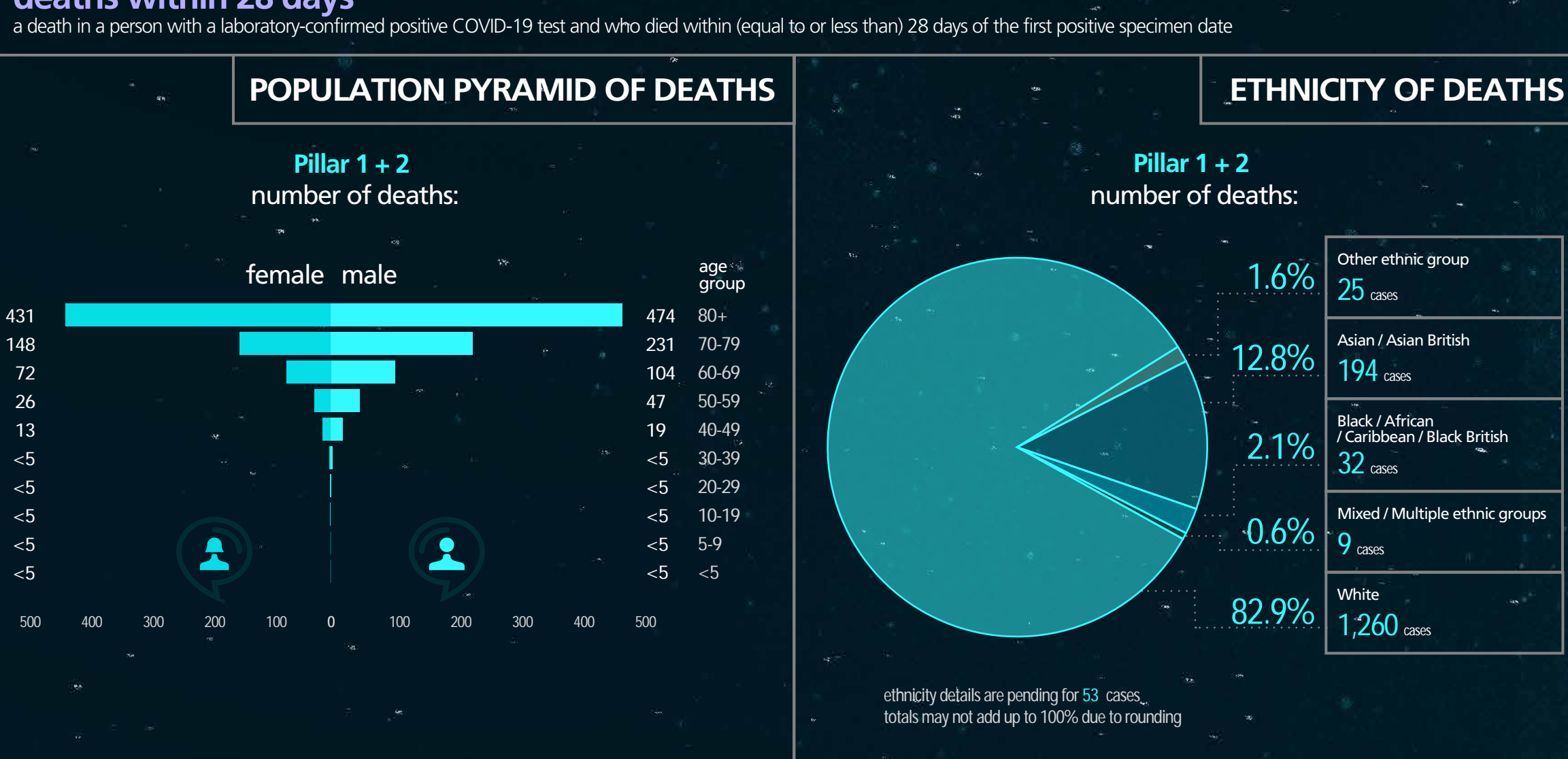
ethnicity details are pending for 8,259 cases (totals may not add up to 100% due to rounding). * last 2 weeks - 14 September to 27 September (data as available on 29 September 2020)

Mortality data

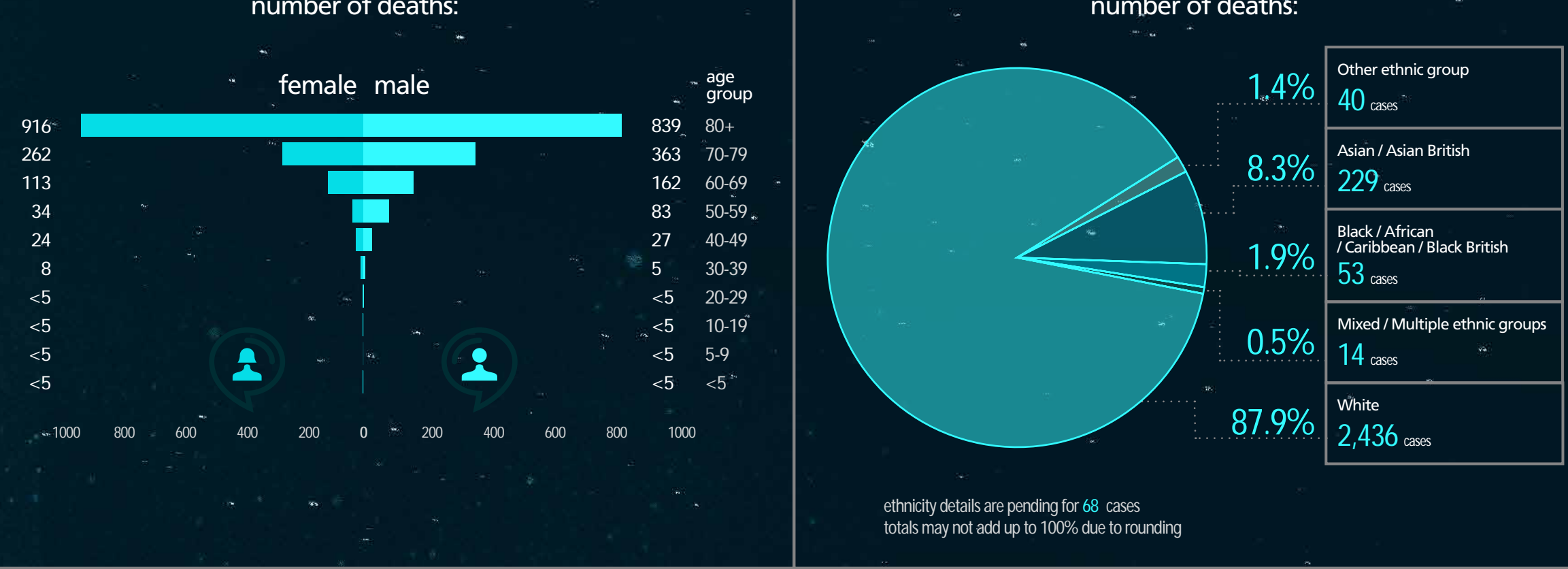


due to continuous data quality improvements, a small number of weekly announced deaths may not be included in the cumulative total since 29 June 2020 if further information found they had a report from an earlier date

29 June 2020 to 29 September 2020 in England



ethnicity details are pending for 53 cases (totals may not add up to 100% due to rounding)

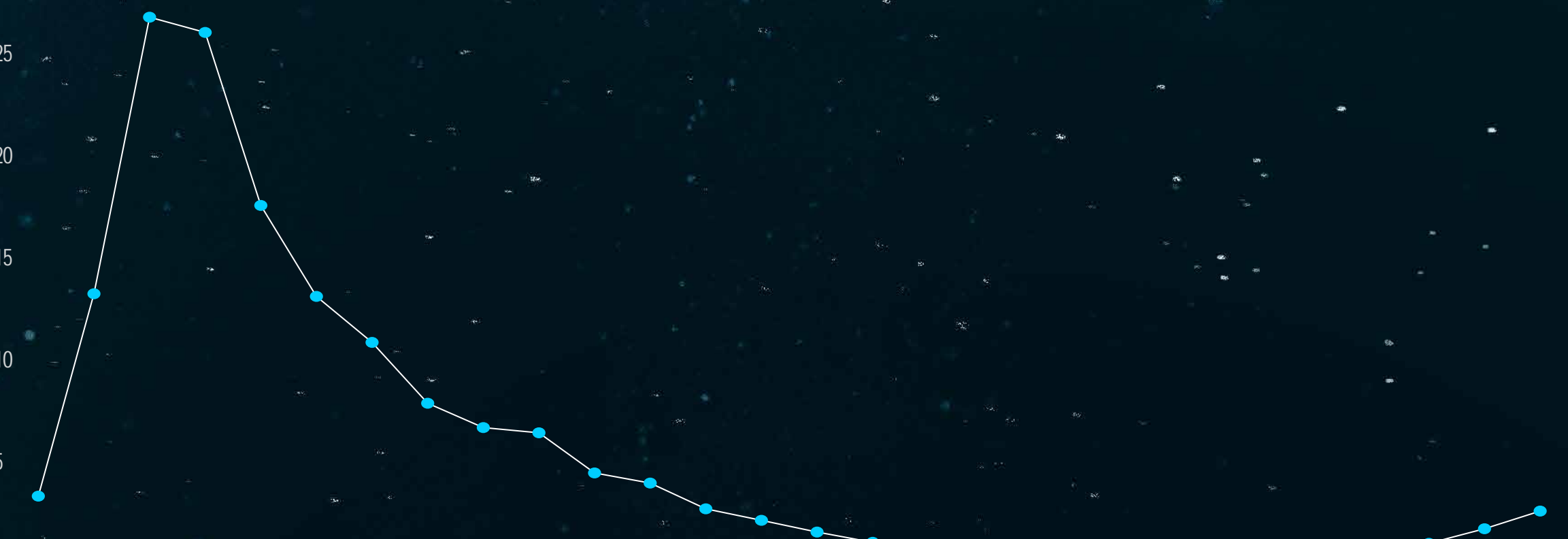


ethnicity details are pending for 68 cases (totals may not add up to 100% due to rounding)

16 March 2020 to 27 September 2020 in England

source: PHE Covid-19 Hospitalisations in England Surveillance System

HOSPITALISATION RATE



further epidemiological data are available in the weekly surveillance report that accompanies this summary

STAY ALERT CONTROL THE VIRUS SAVE LIVES