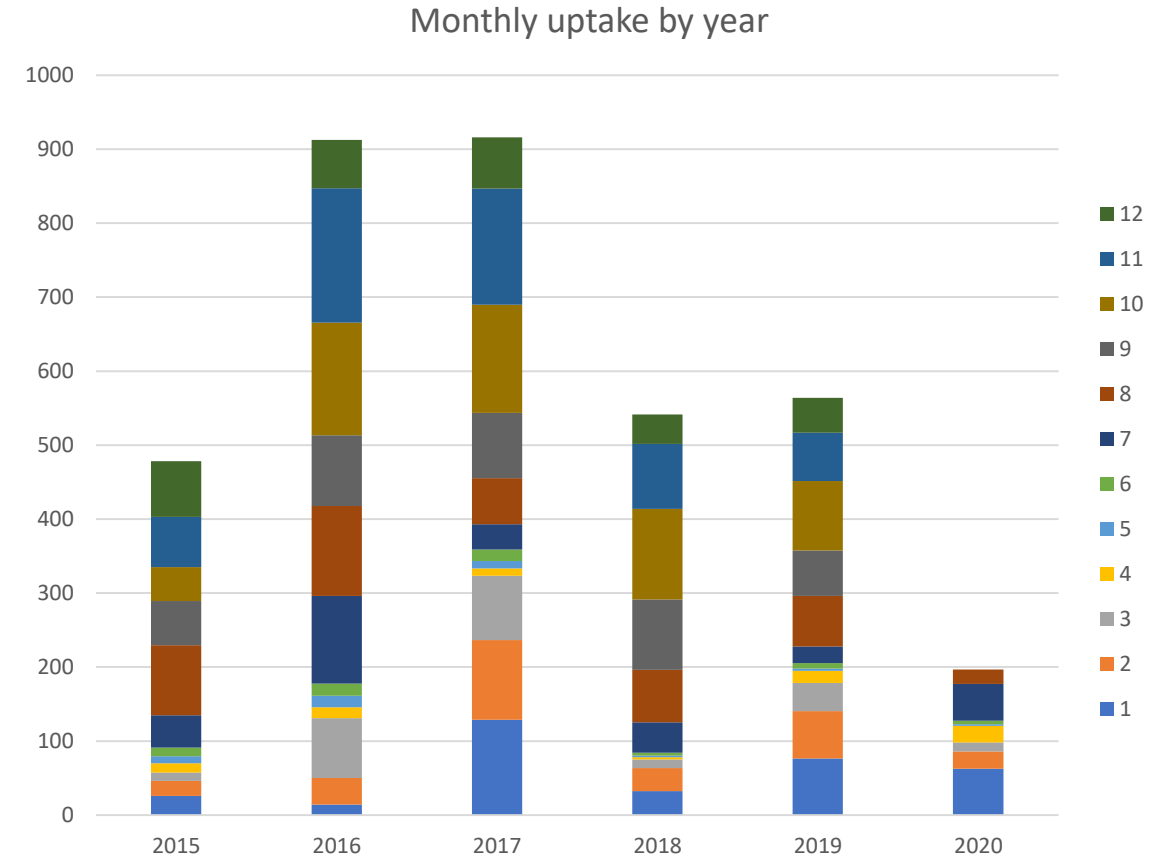
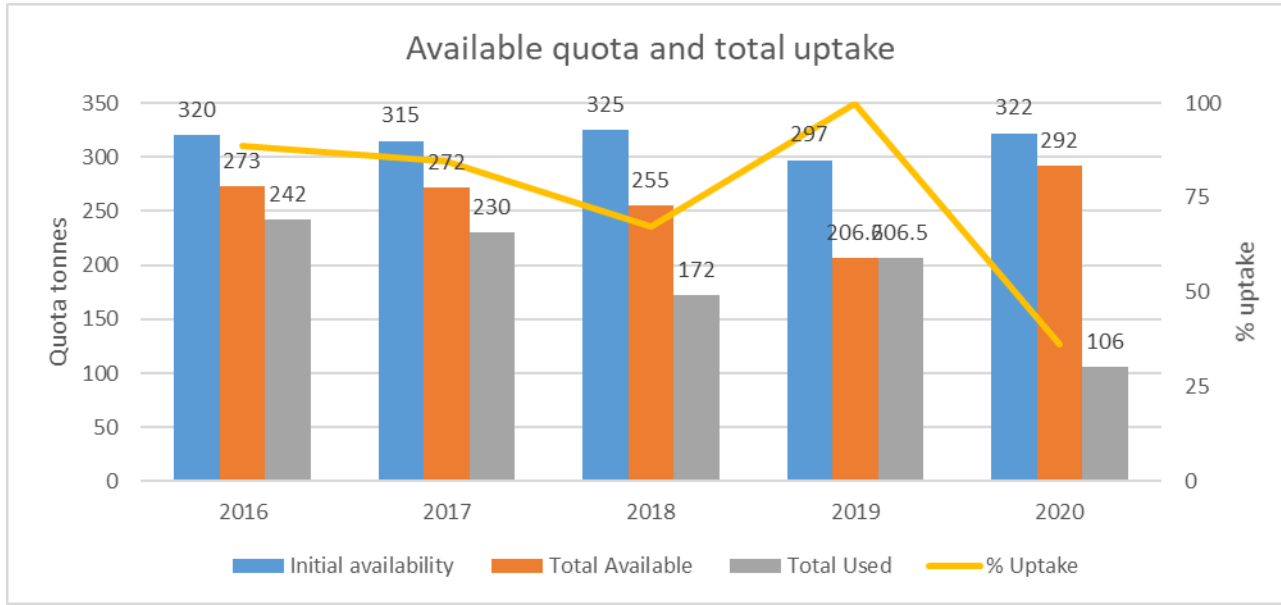
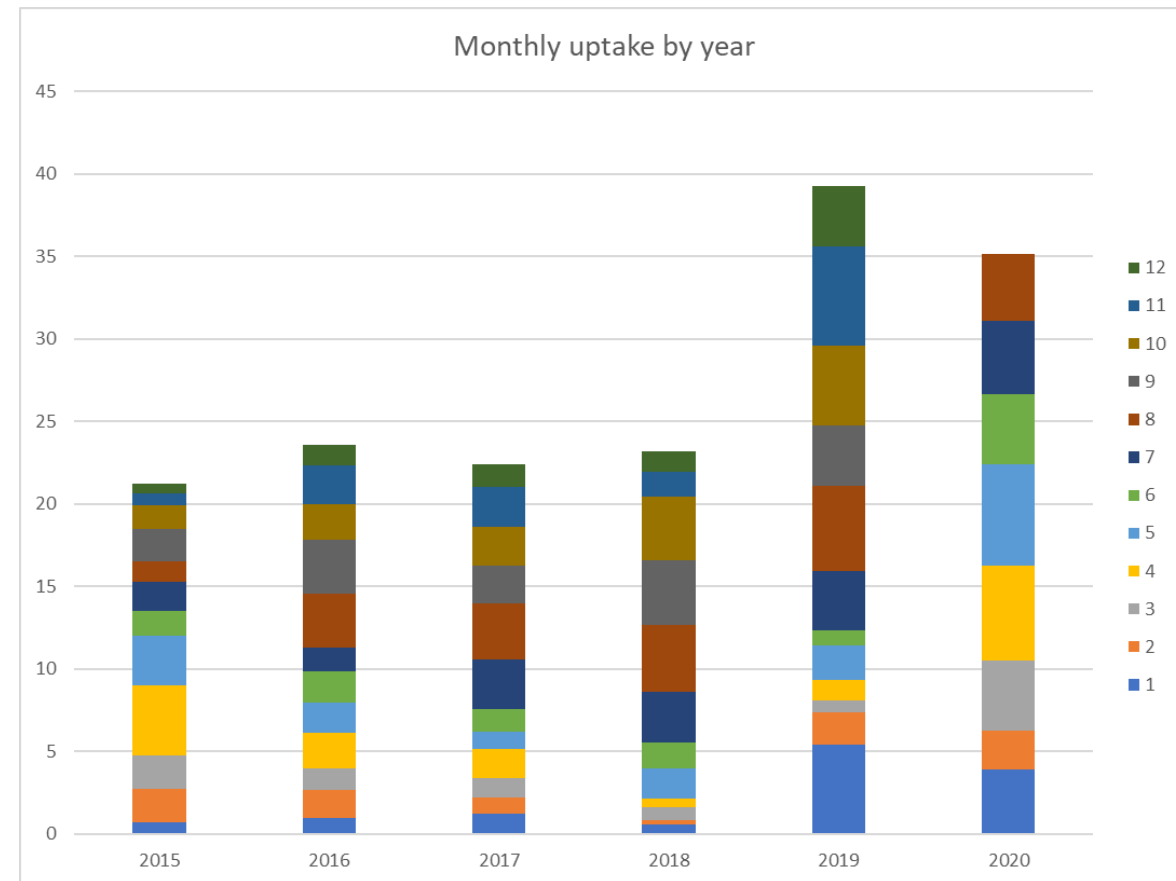
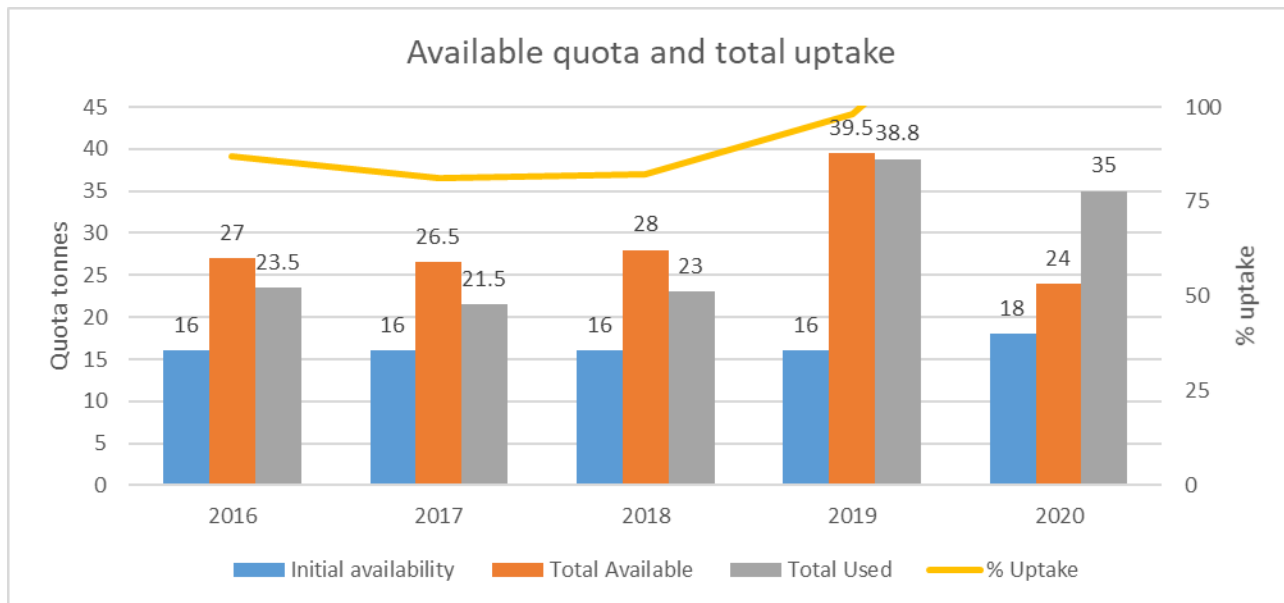


Under 10m Anglerfish - VII



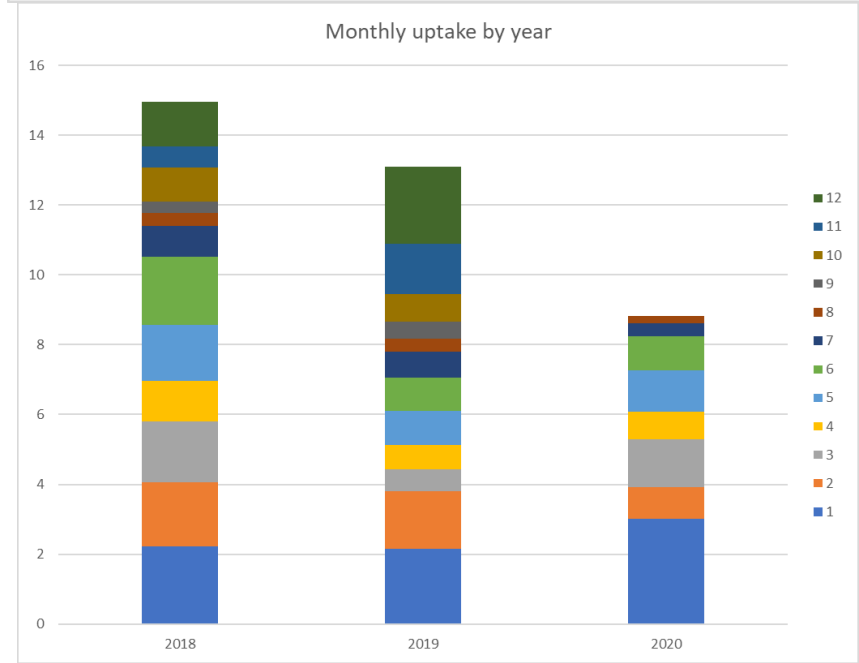
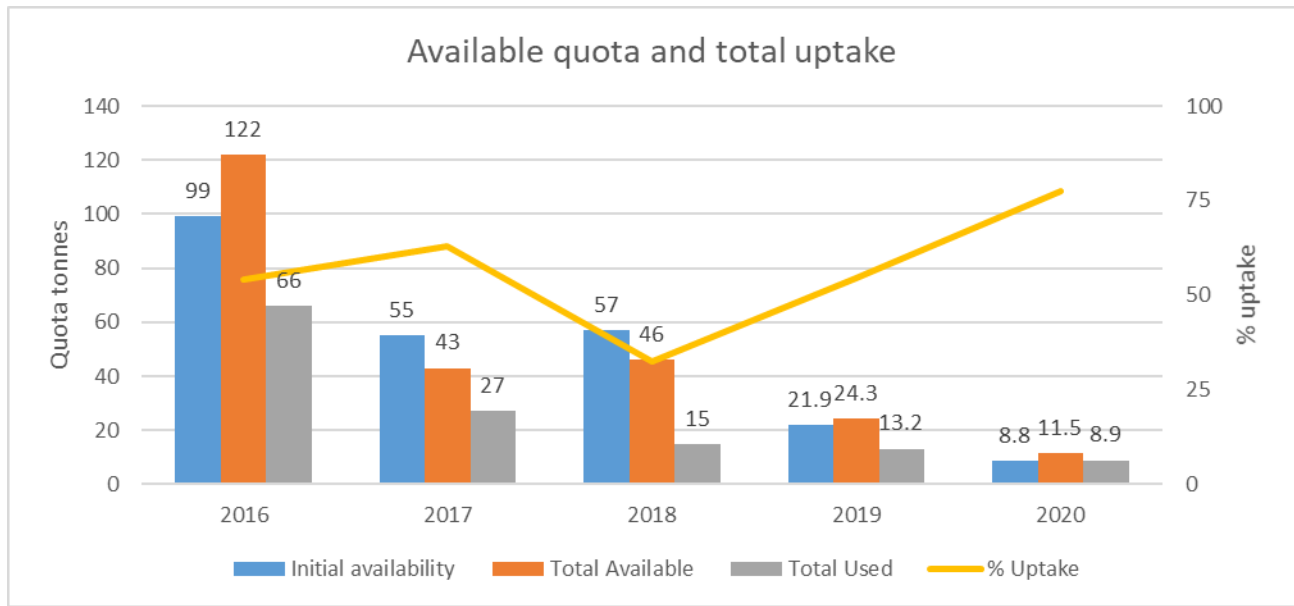
- Catch limit 5t
- Maximum monthly vessel landing this year 2.5t in April.
- Safe to trade out 100t? / Donate to the non-sector?

Over-10m Anglerfish - VII



- Catch limit increased to 3t in August.
- Some vessels leasing. Potential to land another 20t?
- I will trade in more quota from U10s.
- I would like to invite another over-10m vessel to these meetings?

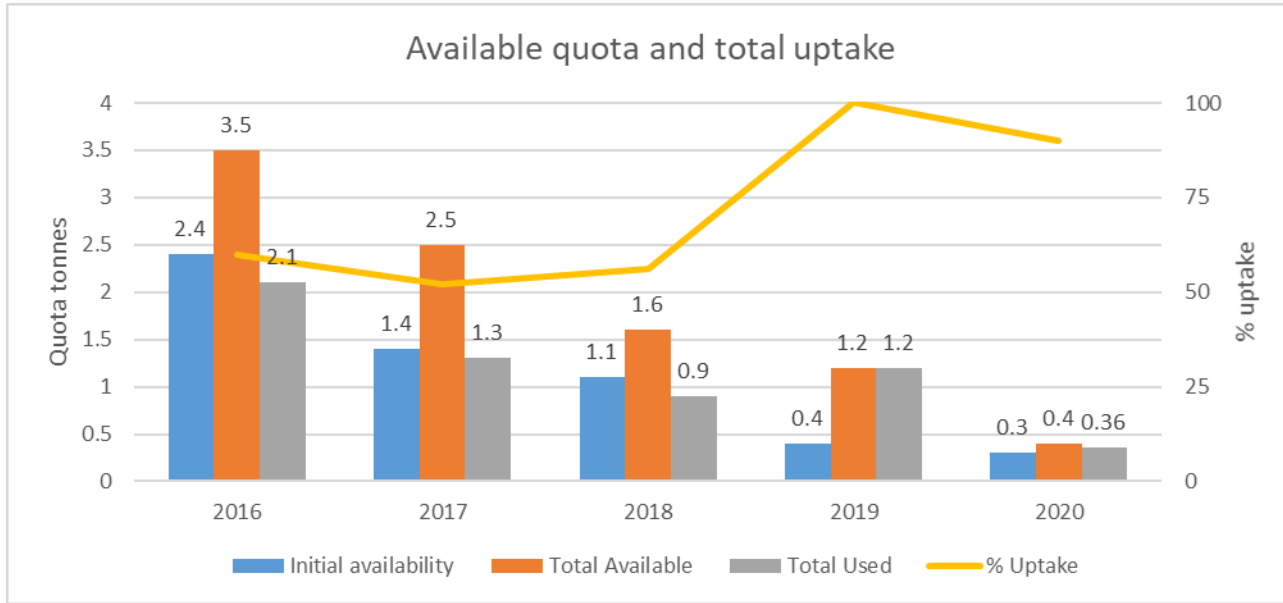
Under-10m Cod VII b-k exc.d



2019 Top 20 landings Sep-Dec	
Month of capture	LiveWgt tonnes
11	0.1595
11	0.1488
9	0.0946
11	0.0863
10	0.0785
10	0.0602
11	0.0567
11	0.0539
10	0.0505
10	0.0479
11	0.0477
11	0.0446
11	0.0422
11	0.0409
9	0.0402
10	0.035
11	0.0346
11	0.0339
11	0.0314
10	0.0297

- Catch limit has been 20kg from July onwards, at this level I think we will just make it to the end of the year.
- But see top 20 landings for 2019 Sep-Dec; I expect there will be discards to stay under 20kg.
- I am not currently permitted to increase the catch limit.

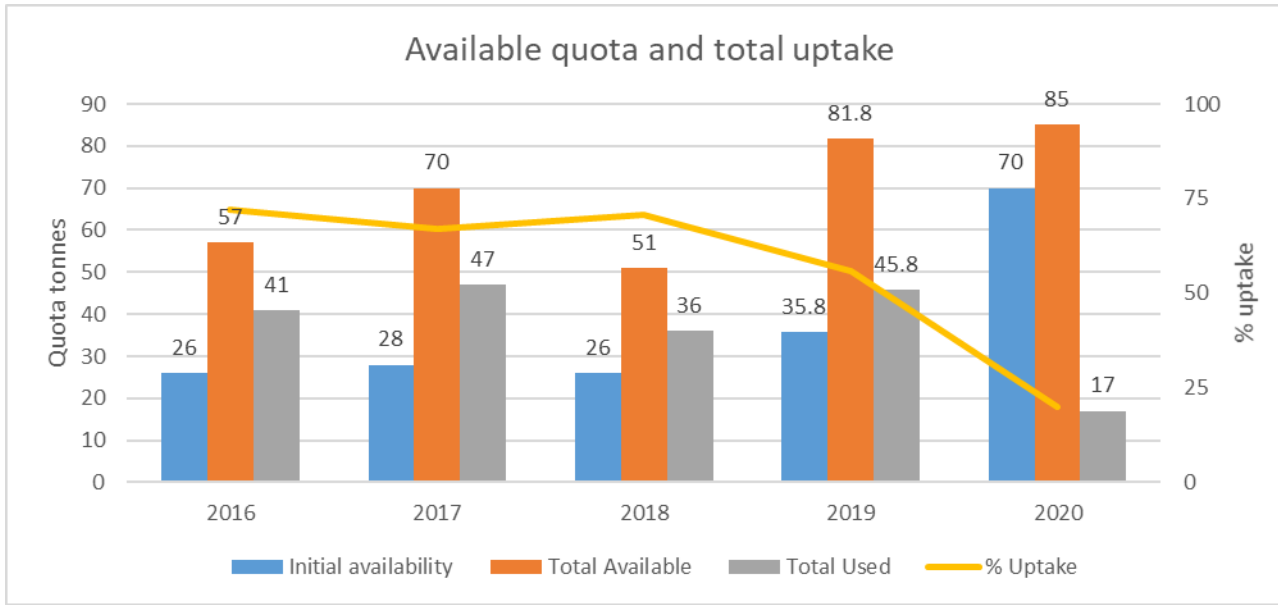
Over-10m Cod VII b-k exc.d



- Only 40kg left until we run out.
- Intention is to trade in from the U10s but I need your approval to do so.
- 2019s Sep-Dec uptake was 300kg (although 190kg from a single vessel), most vessels landed under 15kg.

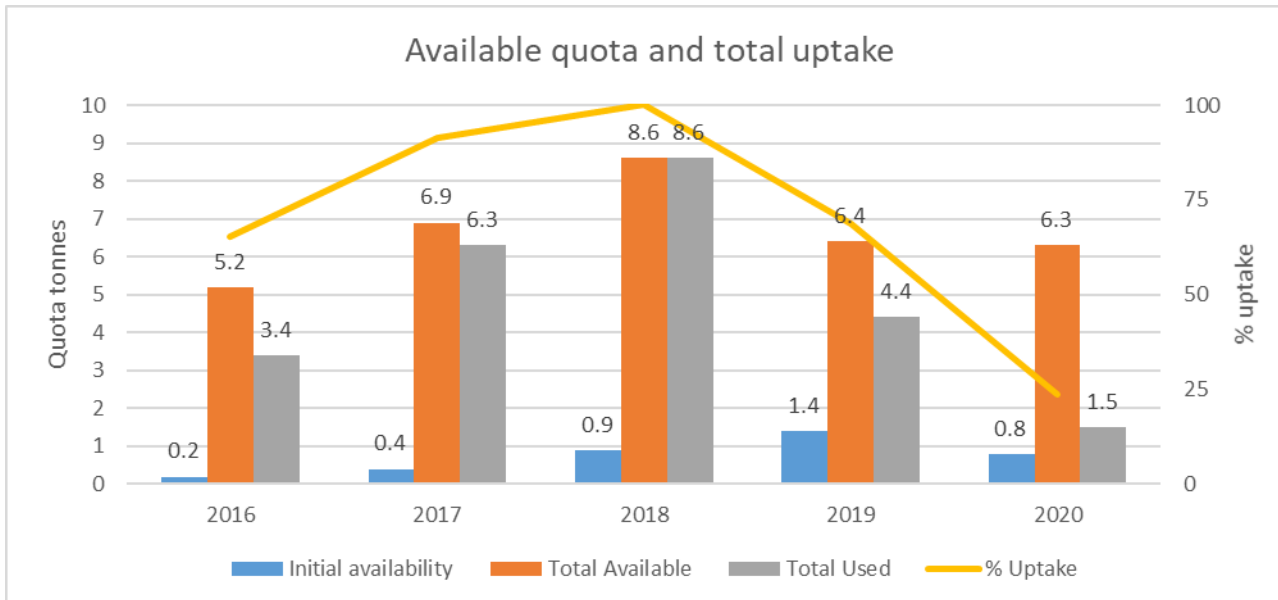
2019 landings Sep-Dec	
Month of capture	LiveWgt tonnes
12	0.1918
10	0.0239
11	0.0203
10	0.0202
11	0.0139
12	0.0101
12	0.0058
12	0.0052
10	0.0047
10	0.0036
11	0.003
9	0.0027
10	0.0017
12	0.0017
11	0.0015
12	0.001
9	0.001
11	0.0007
11	0.0002
	0.313

Under-10m Haddock VII b-k



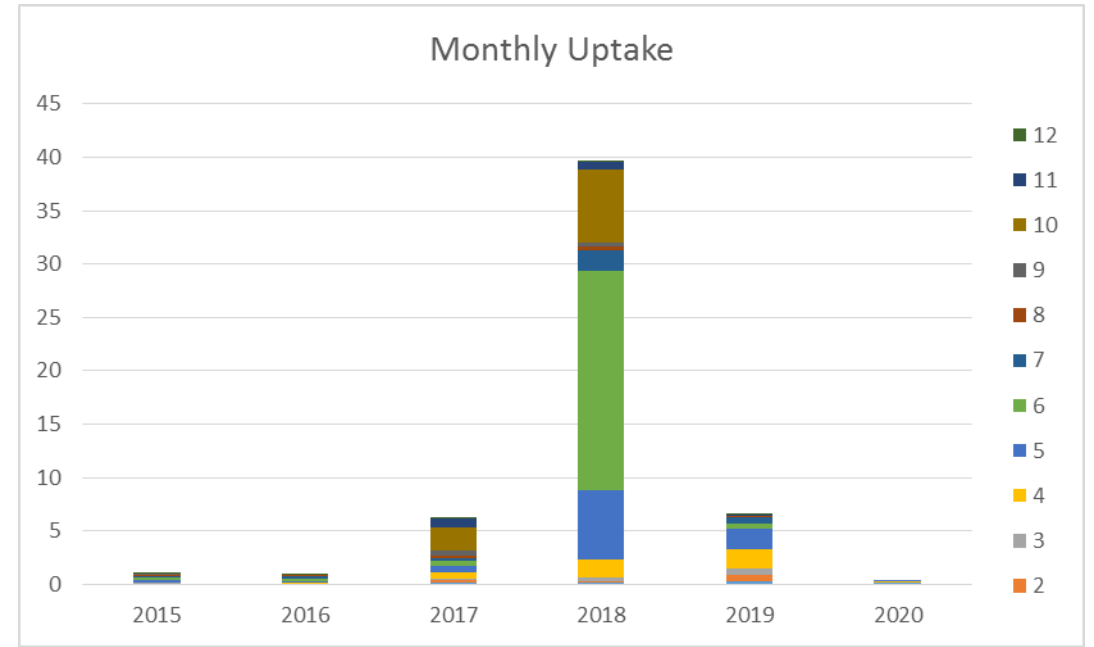
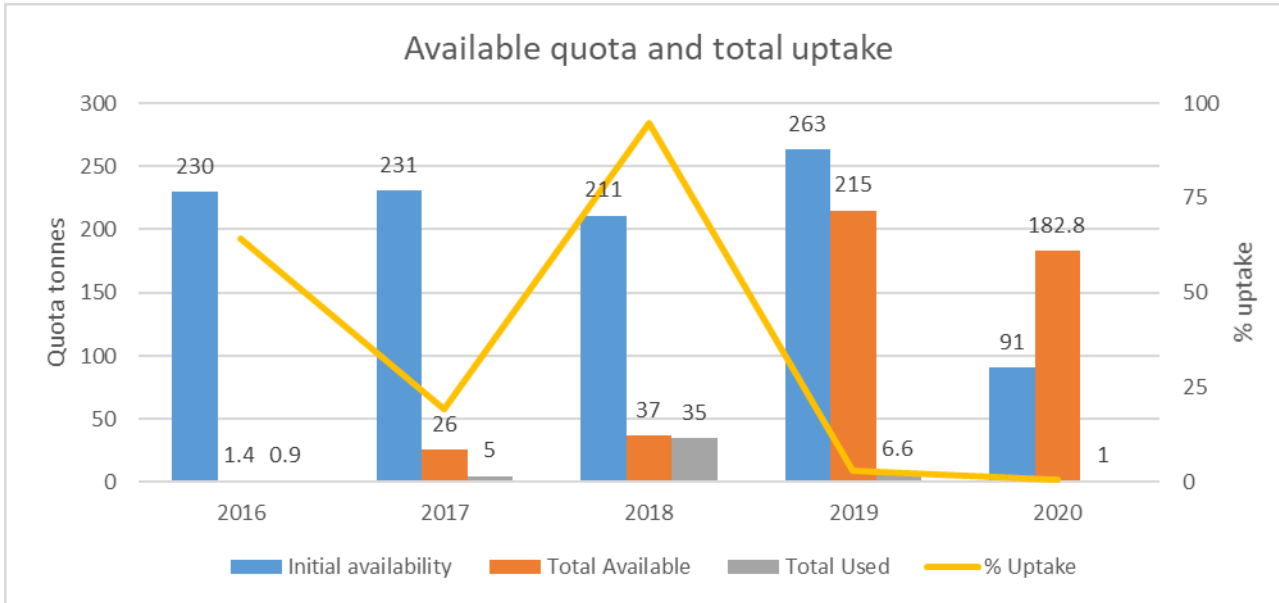
- Catch limit is 4t.
- Max landing this year was 2.5t in May.

Over-10m Haddock VII b-k



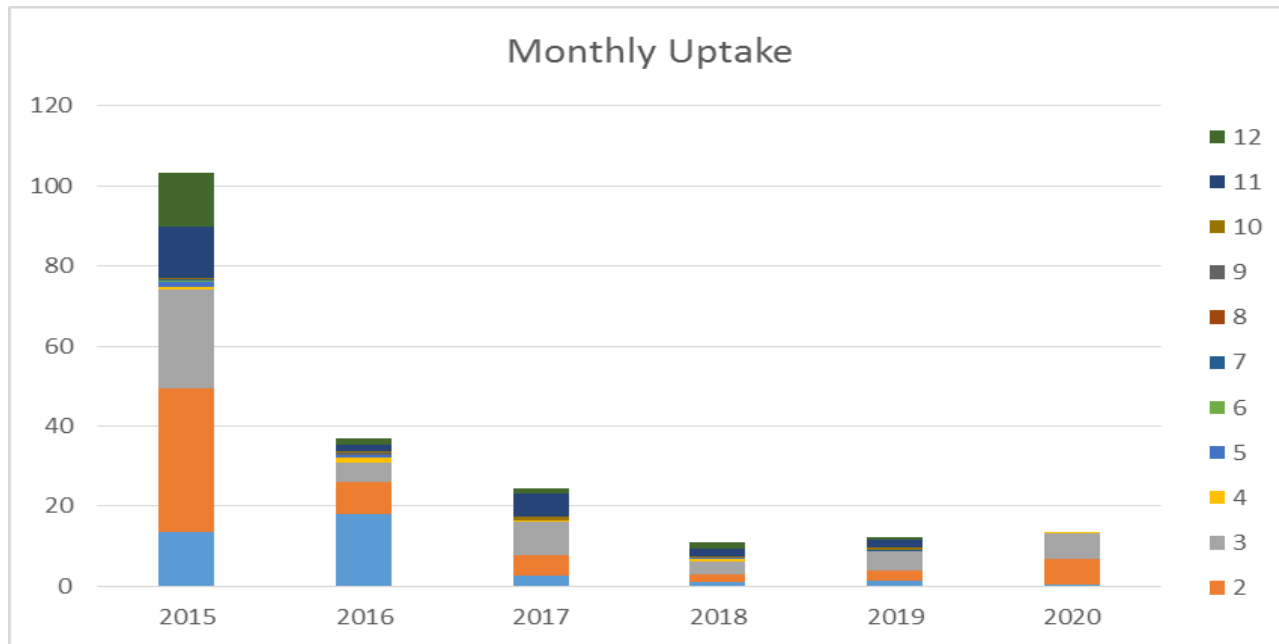
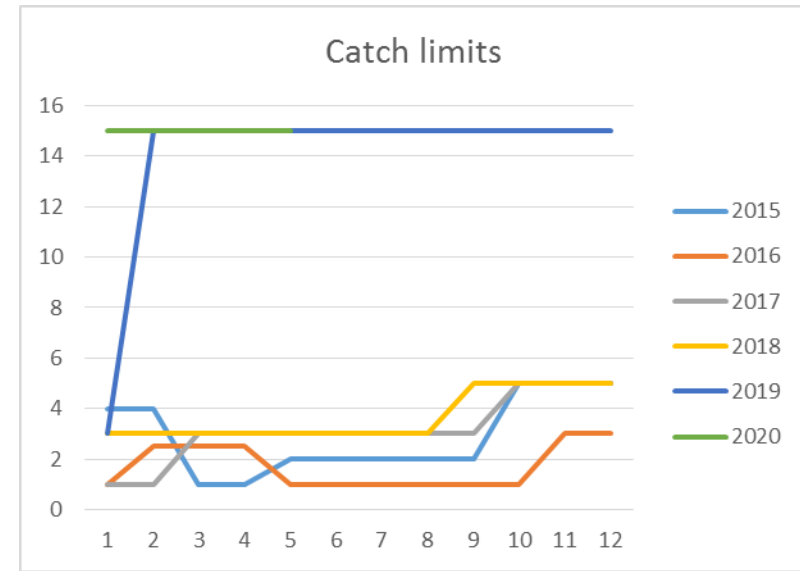
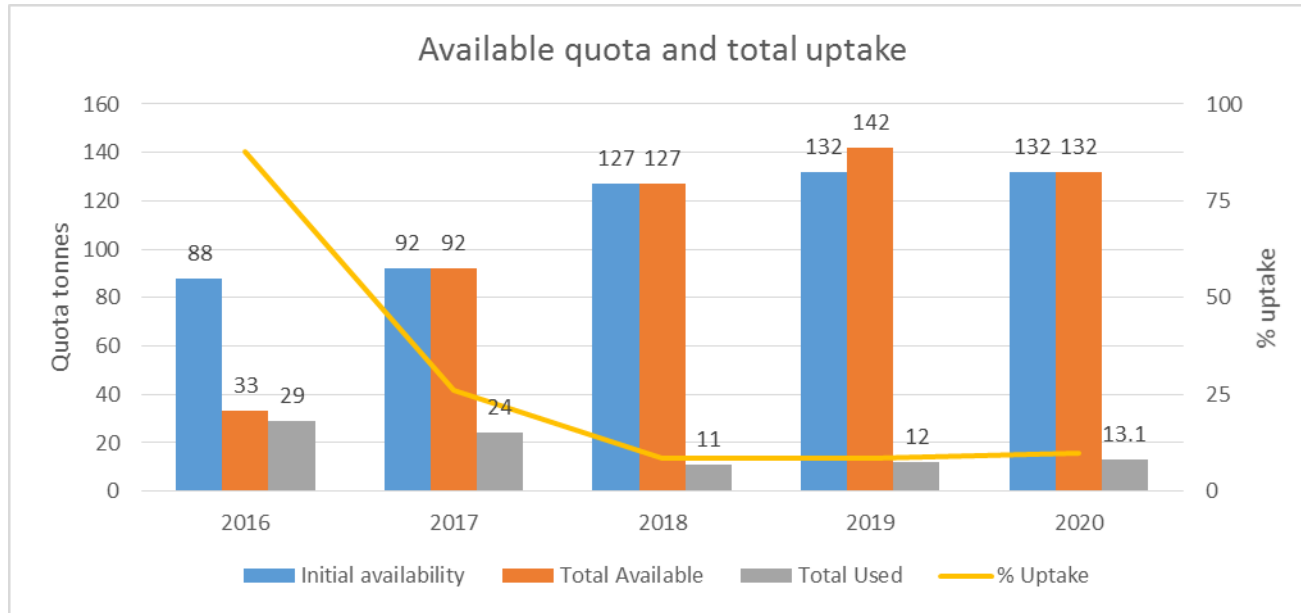
- Catch limit is 2.75t.
- Max landing this year was 1.5t in May.

Under-10m Hake Western



- Catch limit is 15t can be increased if needed.
- I presume this will not now be targeted.

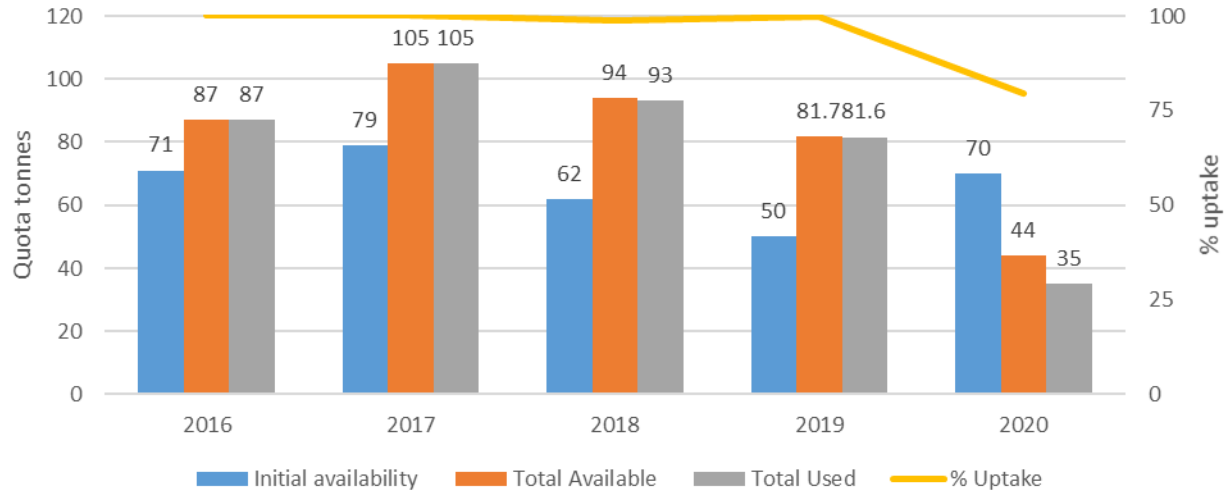
Under-10m Herring Vlle-f



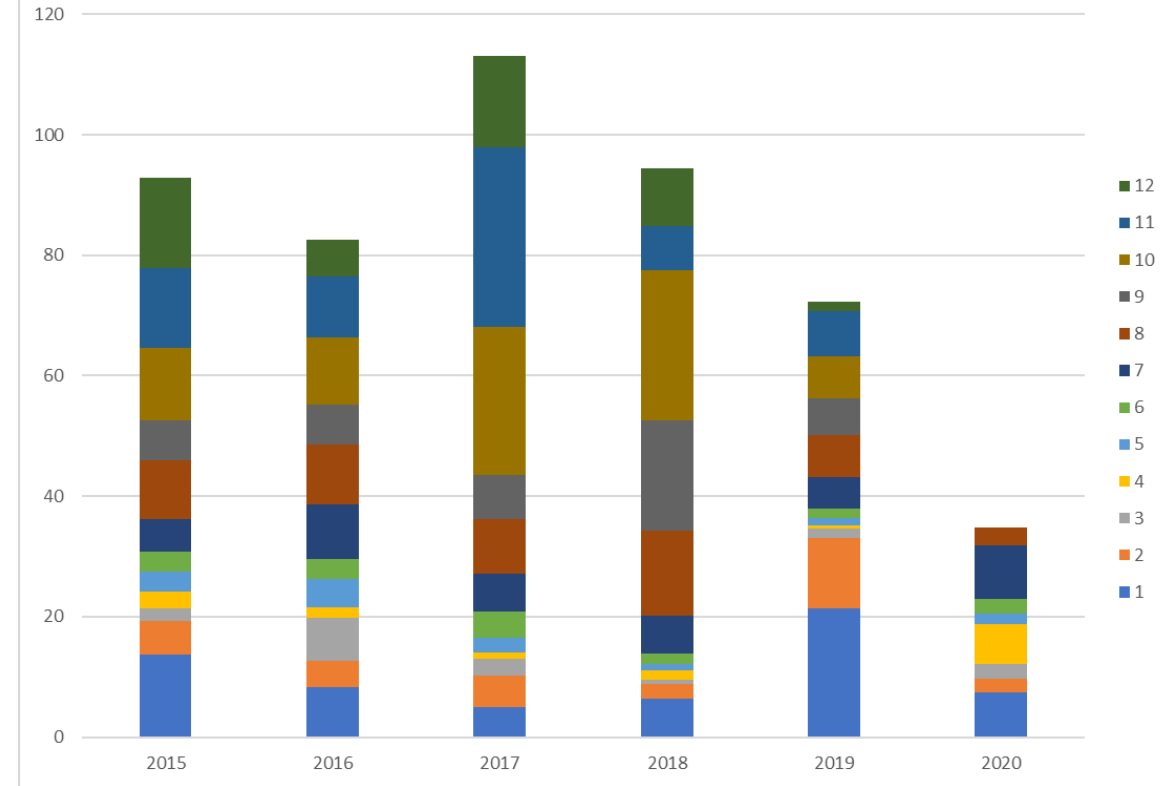
- Sufficient quota and catch limit
- Interested to know if anyone is going to have a go this winter?

Under-10m Western Mackerel

Available quota and total uptake



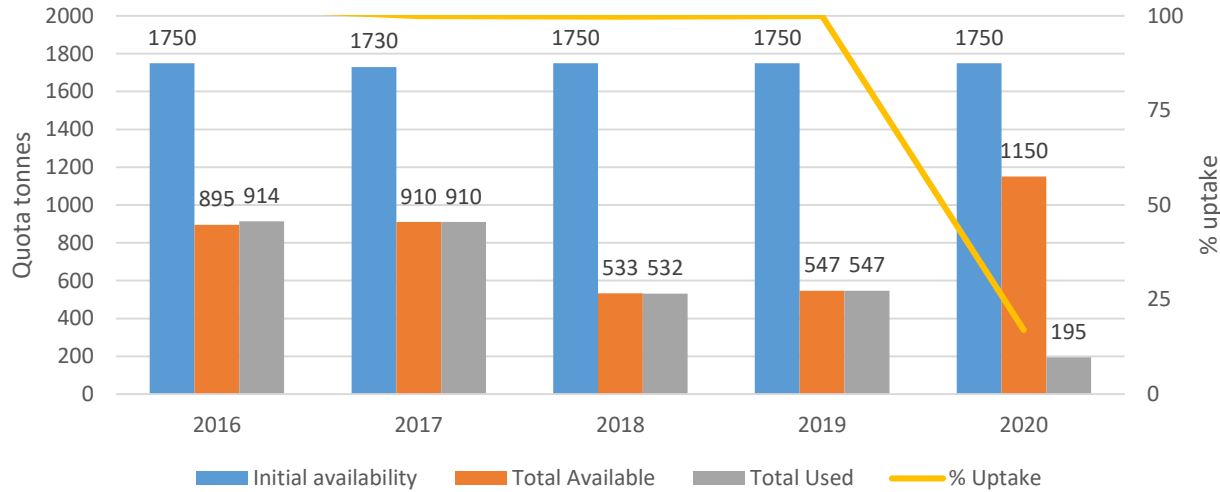
Monthly uptake by year



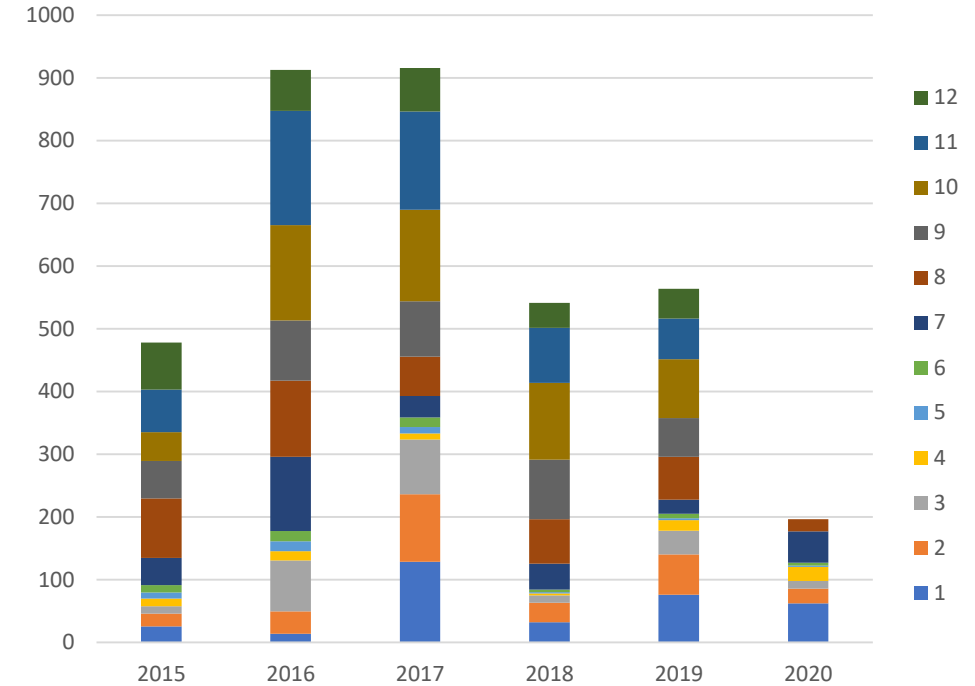
- Uptake is down on last year.
- I presume the handline association would be happy to support further catches this year?
- Potentially another 40t to be landed but seems unlikely.
- O10 landings <1t

Mackerel Hand-line

Available quota and total uptake



Monthly uptake by year

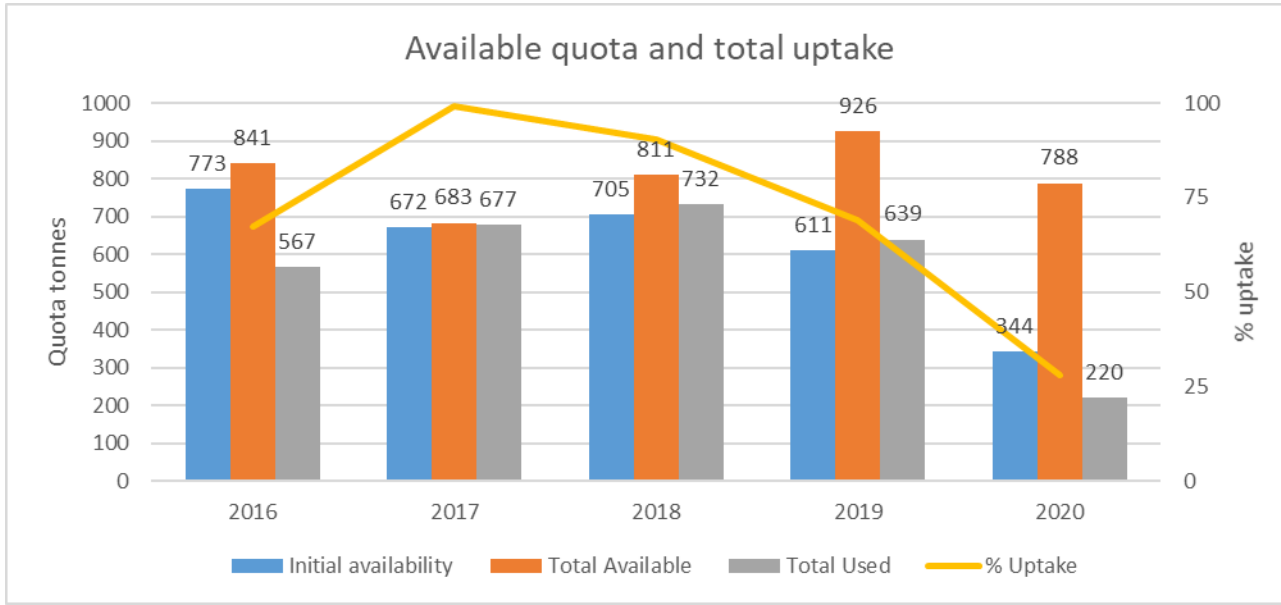


Recent trades:

Processed	Group 1 Given Up	Group 2 Gained	Stock	Quantity
13/08/2020	Under 10m England	Lowestoft	Mackerel WC (MAC/2CX14-)	50.00
13/08/2020	Lowestoft	Under 10m England	Sole VIIe (SOL/07E.)	4.00
21/08/2020	Under 10m England	South West	Mackerel WC (MAC/2CX14-)	50.00
21/08/2020	Under 10m England	South West	Whiting NS exc IV Norway (WHG/2AC4.)	5.00
21/08/2020	South West	Under 10m England	Sole VIIe (SOL/07E.)	5.00
21/08/2020	South West	Under 10m England	Pollack VII (POL/07.)	20.00

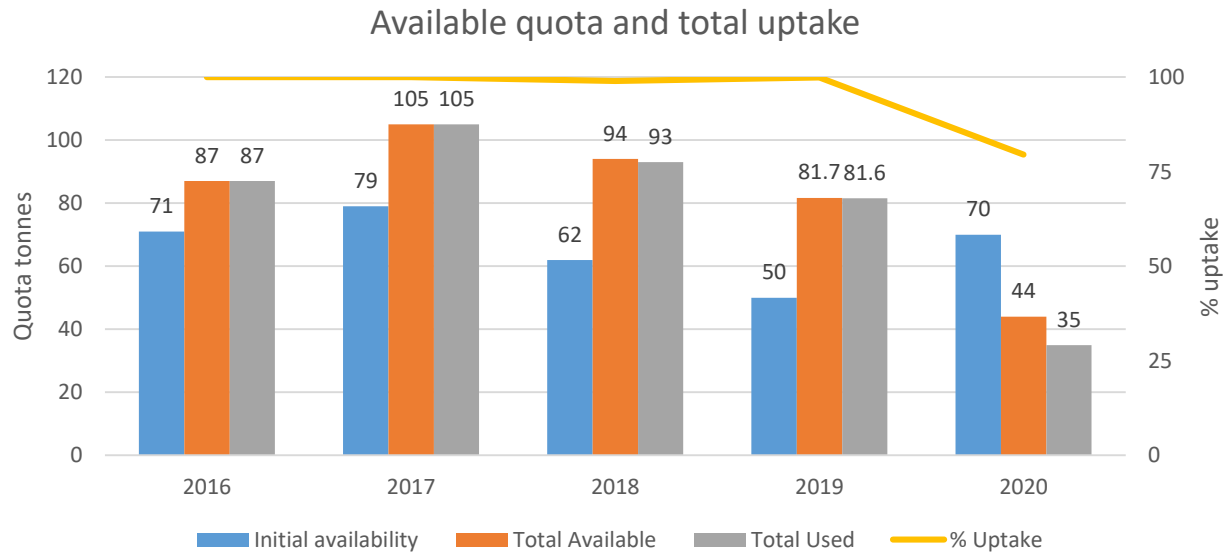
Also arranged for another 15t of 7e sole and 100t of 4c7d herring in exchange for 200t of mackerel at the end of the year and / or the balance to be returned in 2021 if we have less than 200t left.

Under-10m Plaice VII d/e



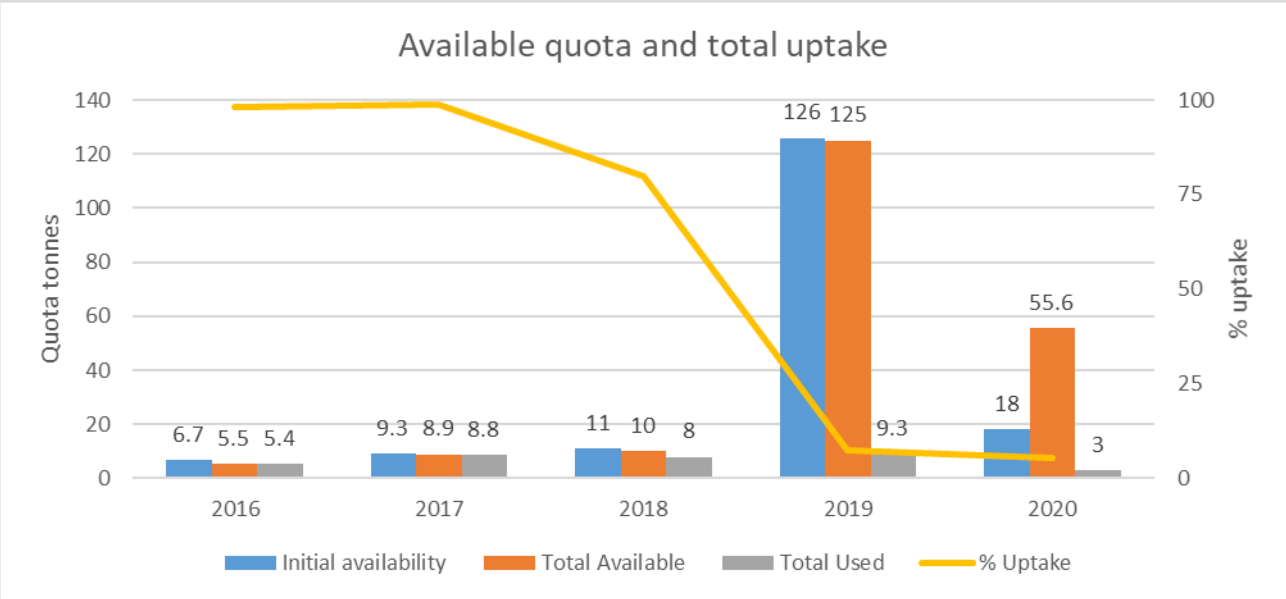
- 12t catch limit is un-restrictive with max landing in April of 8t.

Over-10m Plaice VII d-e



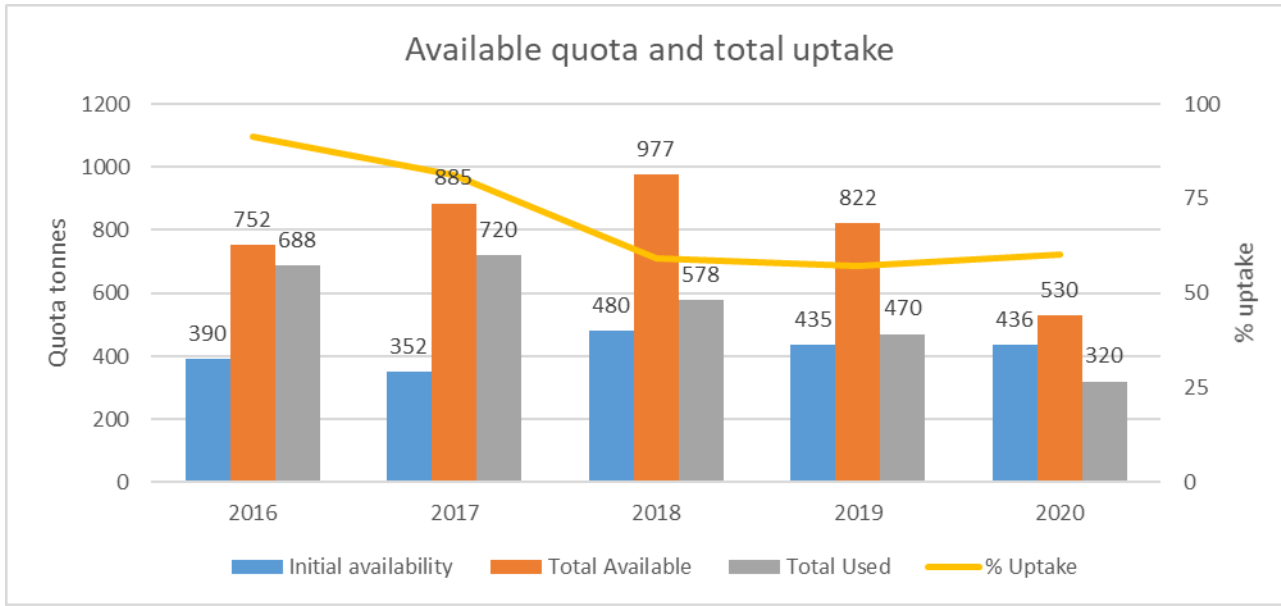
- 10t catch limit is un-restrictive with max landing in April of 4.5t.
- Will trade in from U10 if necessary.

Under-10m Plaice VII f/g

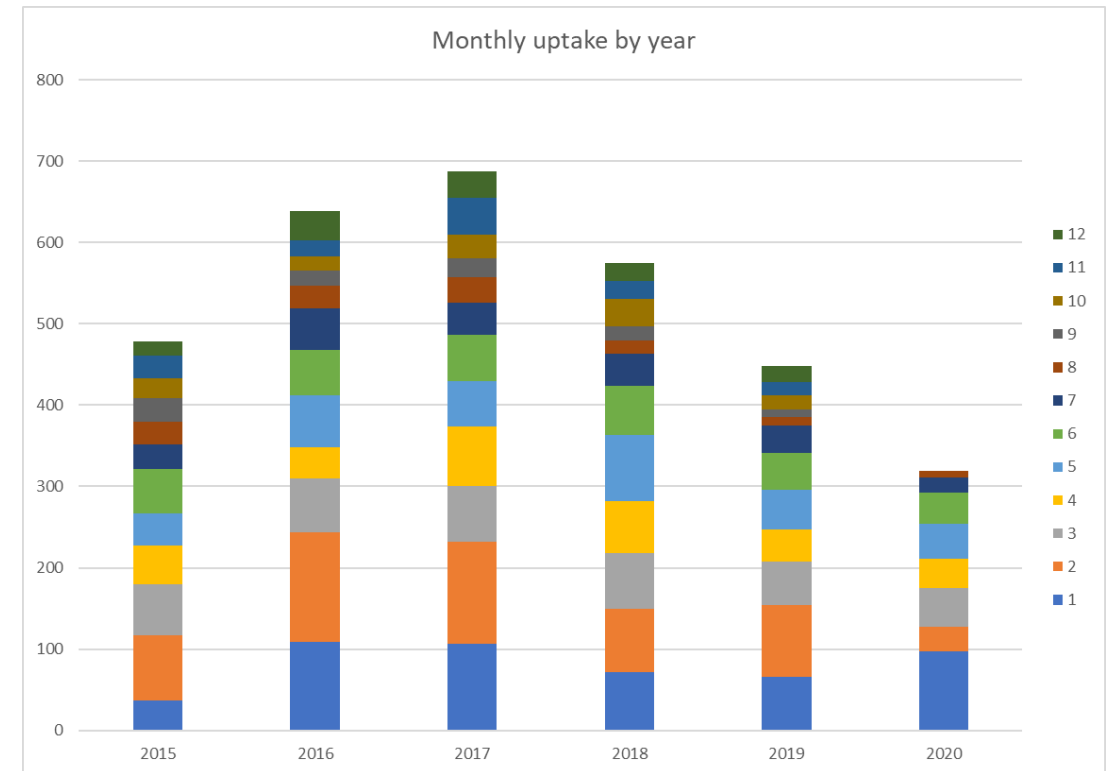


- Catch limit 4t
- Highest landing was in April 400kg

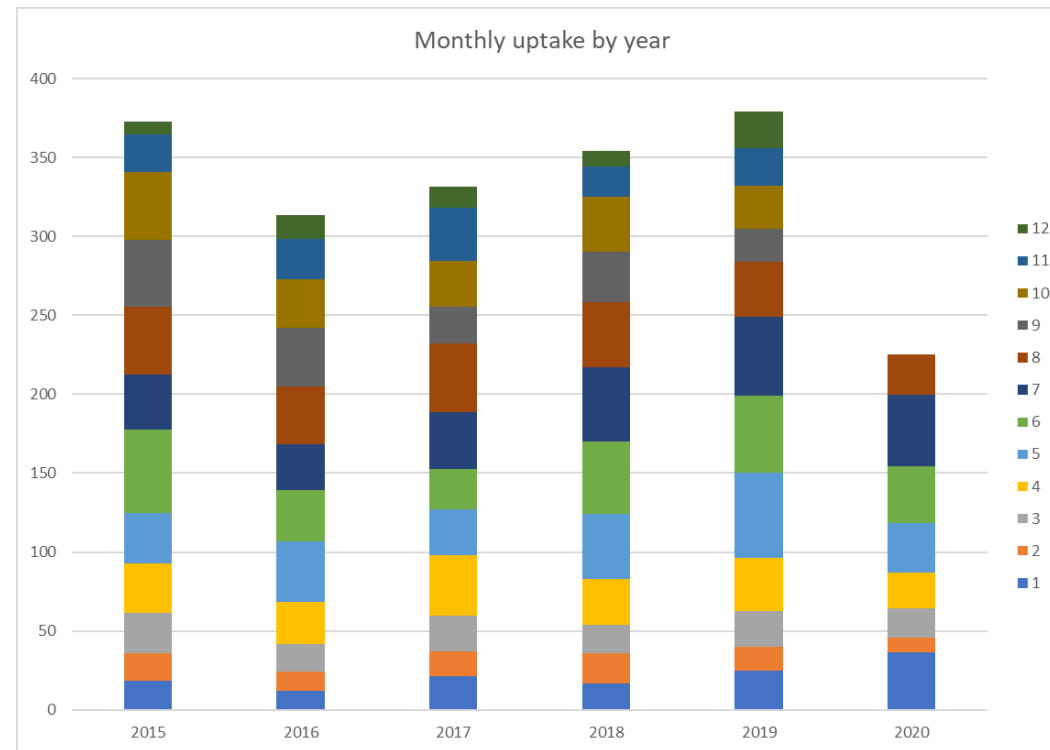
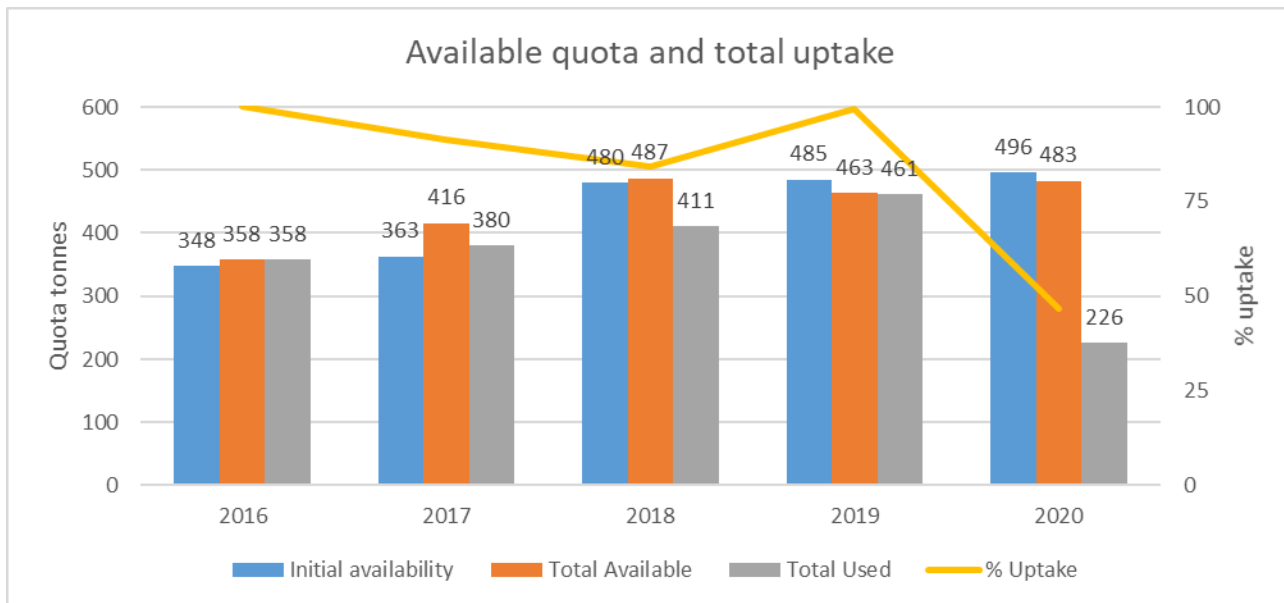
Under-10m Pollack VI/VII



- Sufficient quota and catch limit (10t per month).
- UK uptake 30% with 1600t remaining.
- Can afford to support O10 if needed.
- O10 uptake = 9t they may need another 10t.

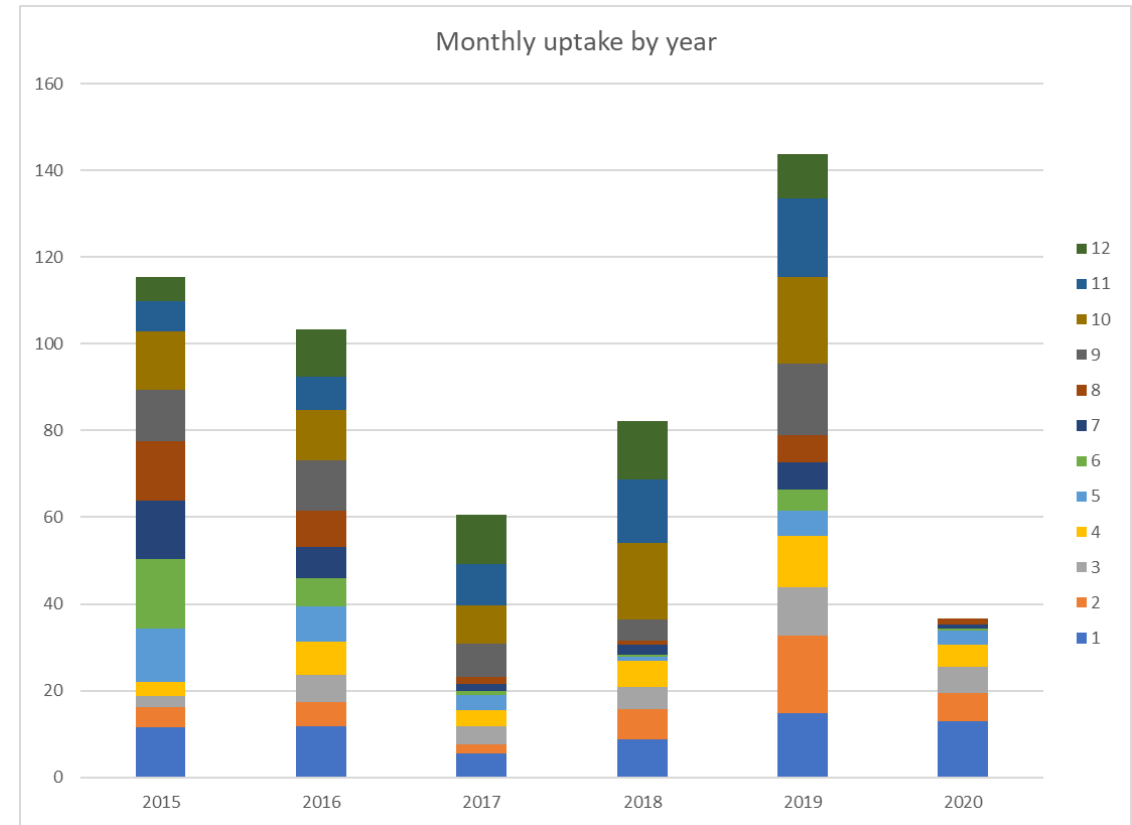
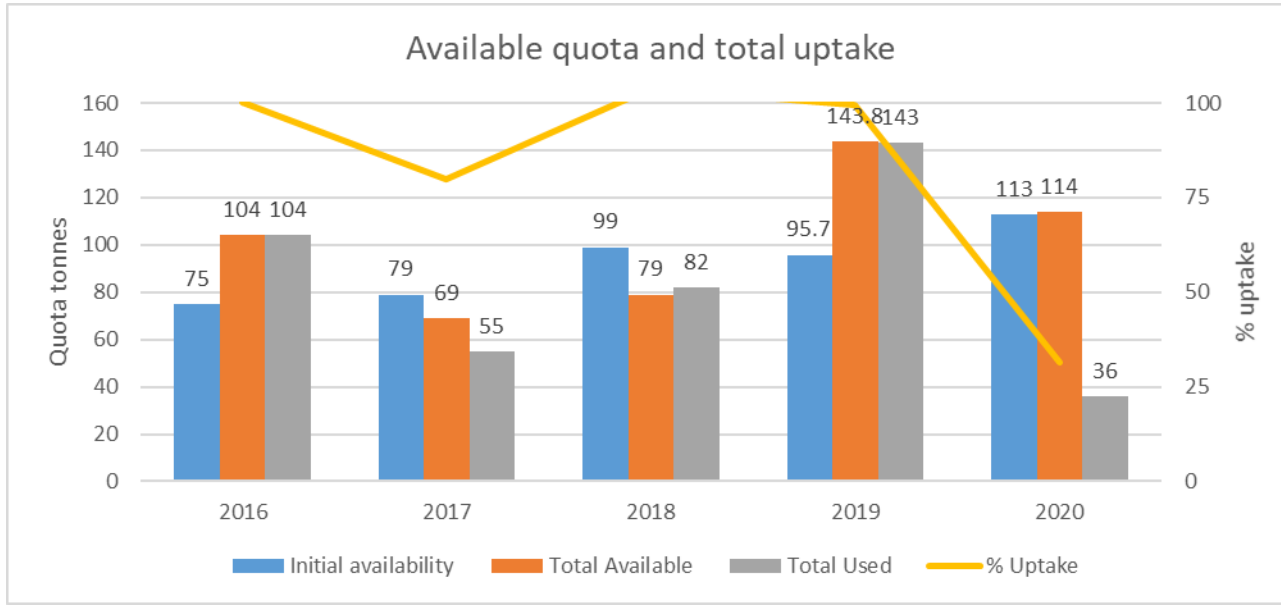


Under-10m Skates & Rays VI / VII



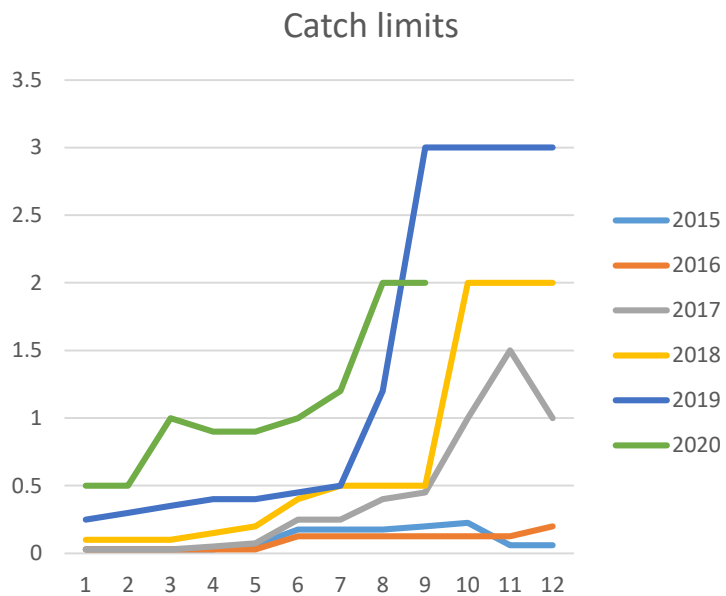
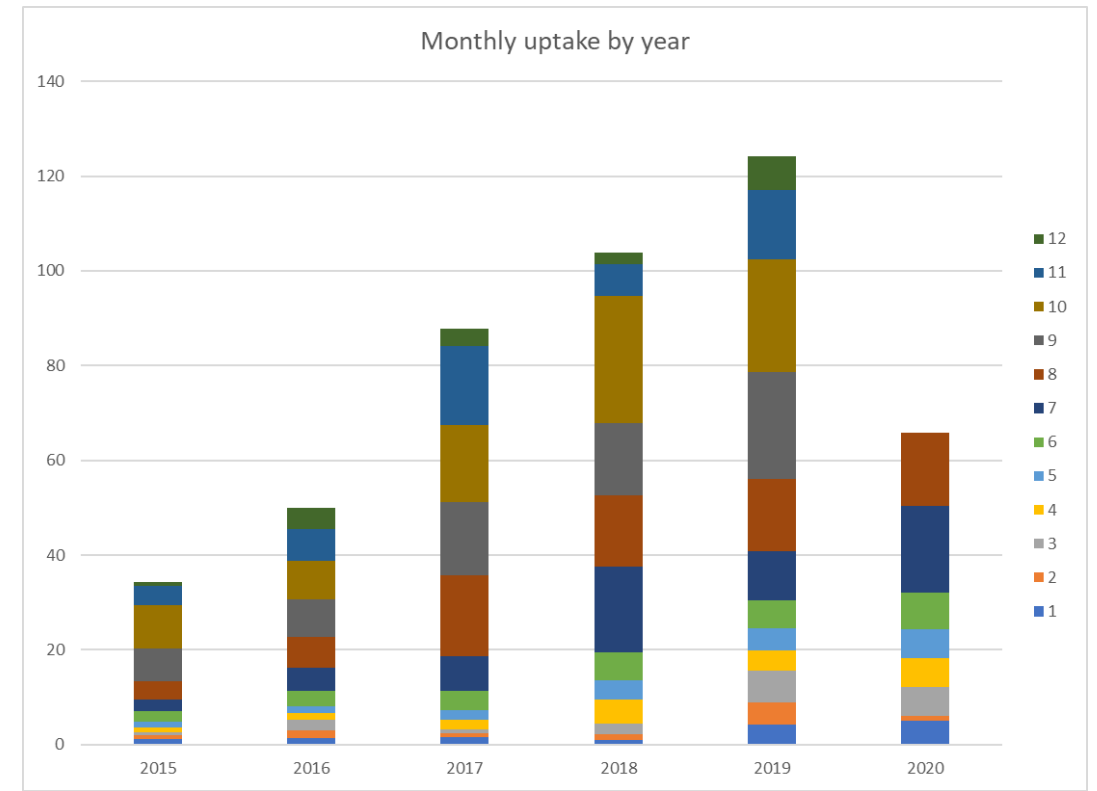
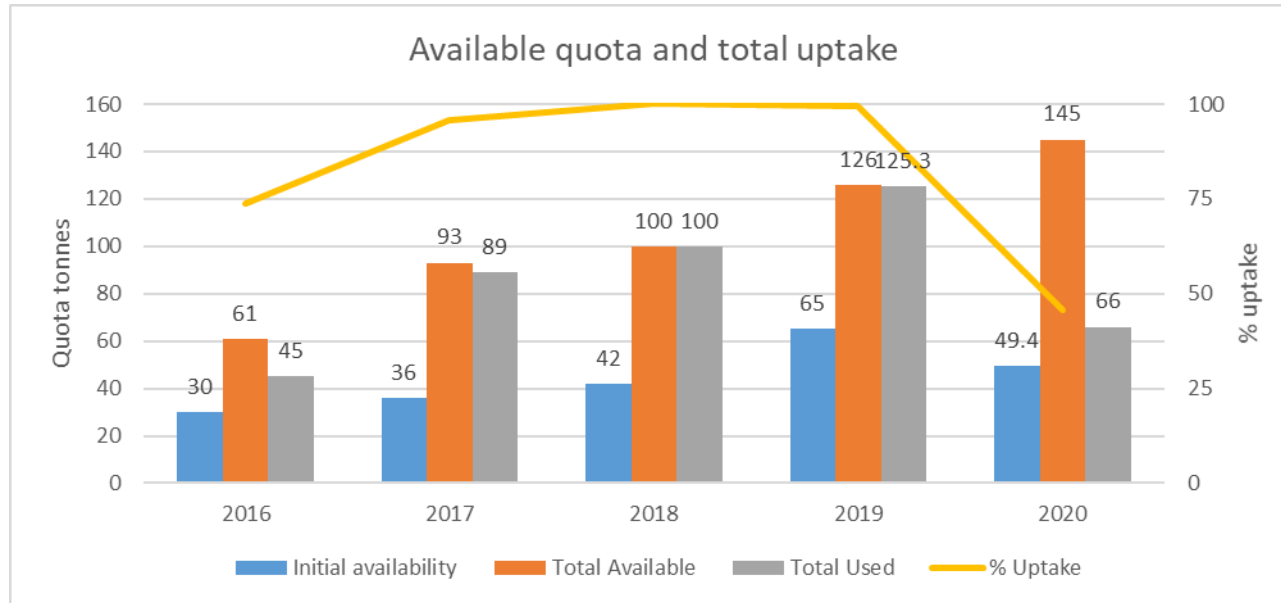
- Max landing 5.5t in July.
- 10t catch limit appears ample and ample quota.

Over-10m Skates & Rays VI / VII



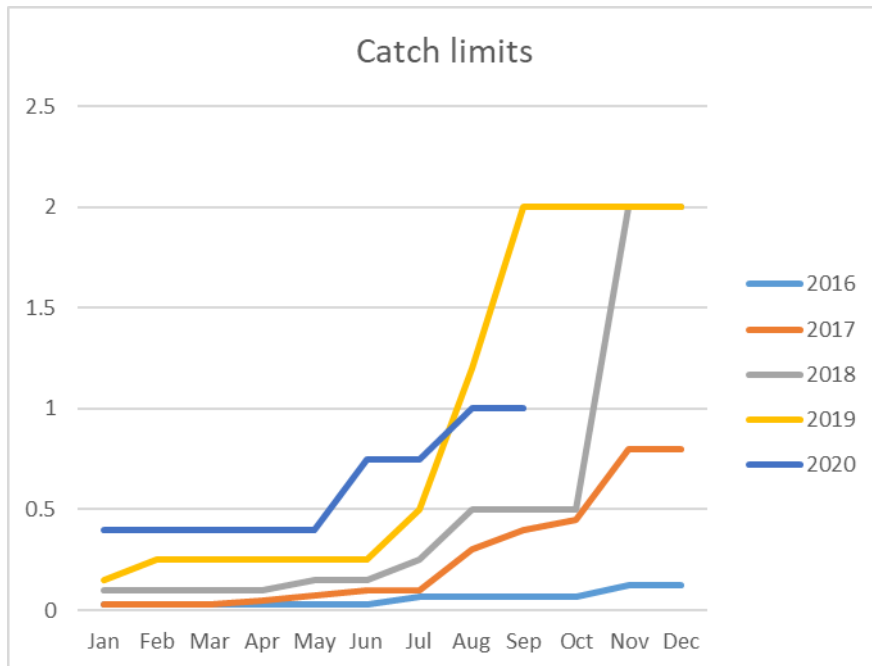
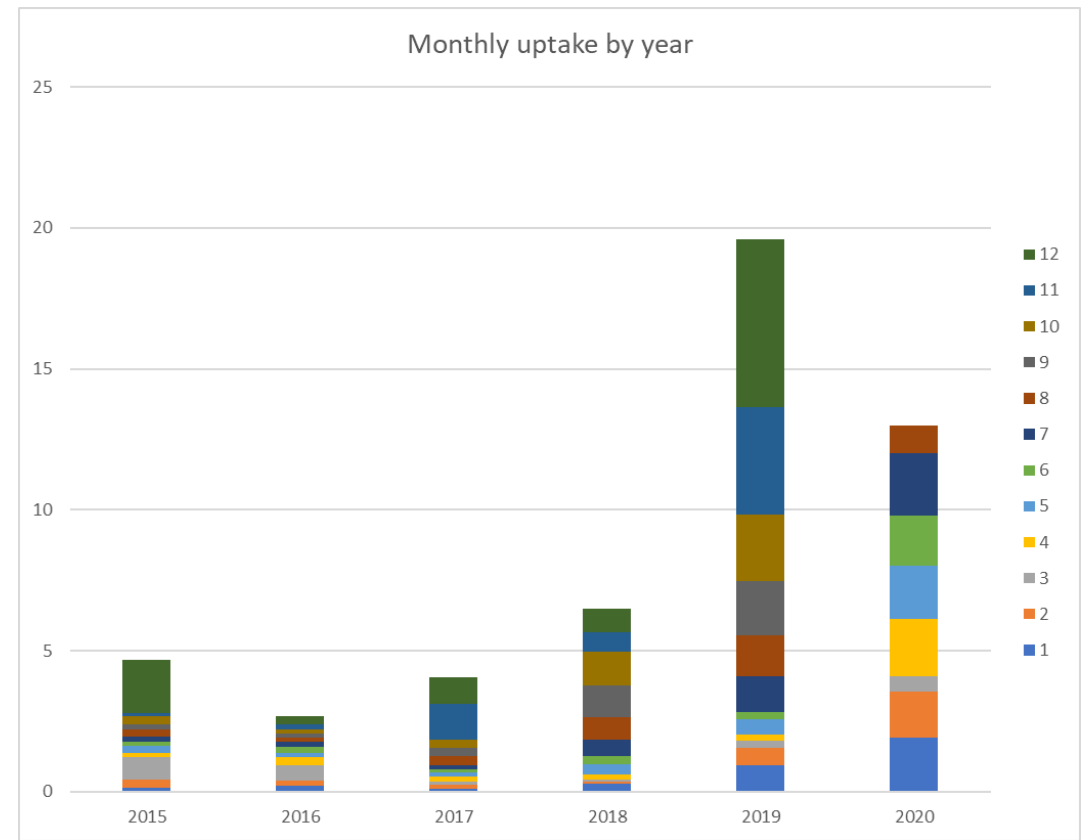
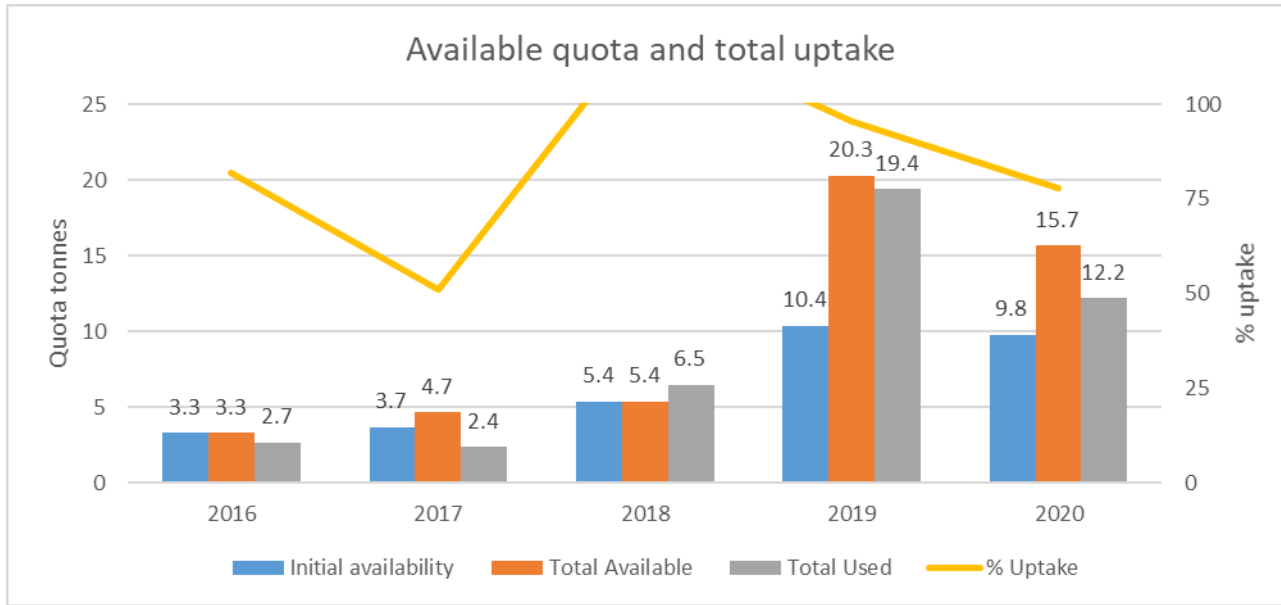
- 10t catch limit is ample with max landing 2.5t in Jan and 1t in August.

Under-10m Sole VIIe



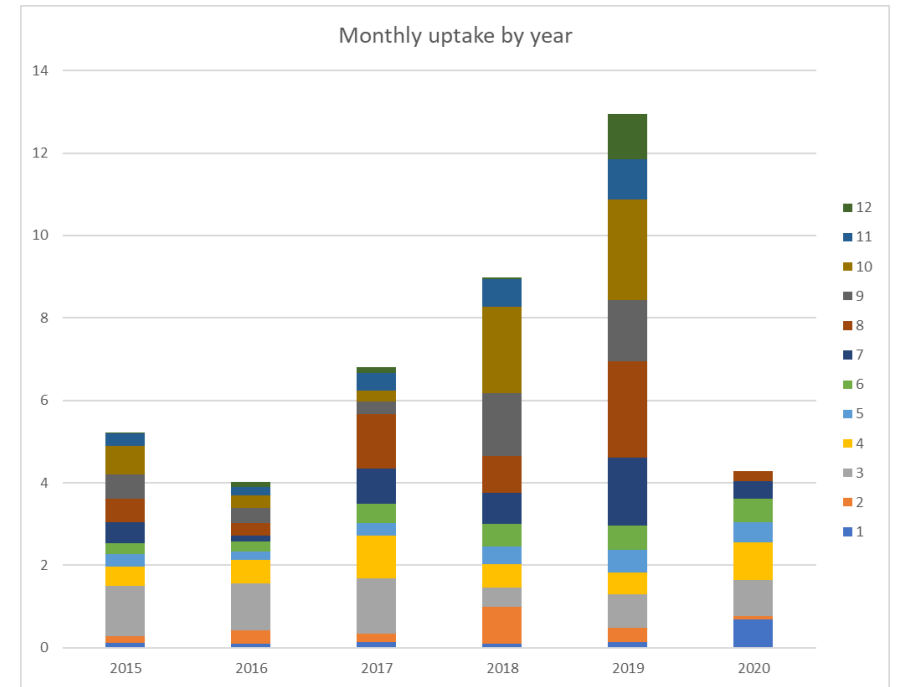
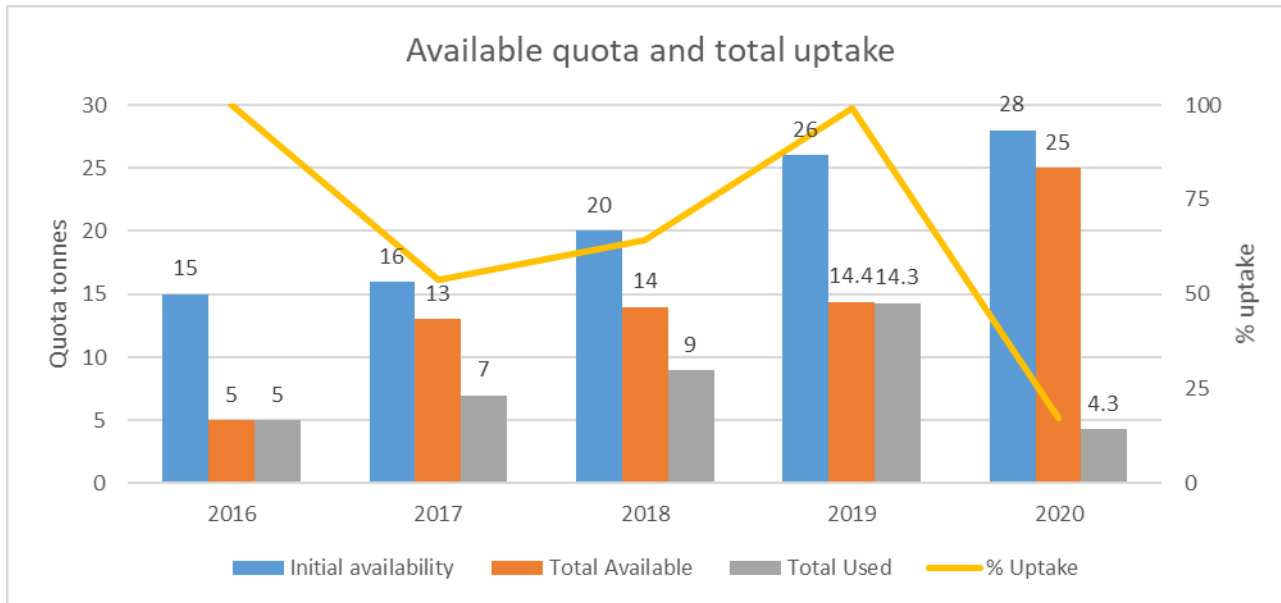
- Maximum landing in August was 1.5t.
- Uptake higher than this point last year.
- 160 vessels landed 7e sole this year compared to 200 during Jan-Aug last year.
- 18 vessels have landed >1t this year compared to 13 during Jan-Aug last year.
- Suggests without effects of COVID landings could be much higher

Over-10m Sole VIIe



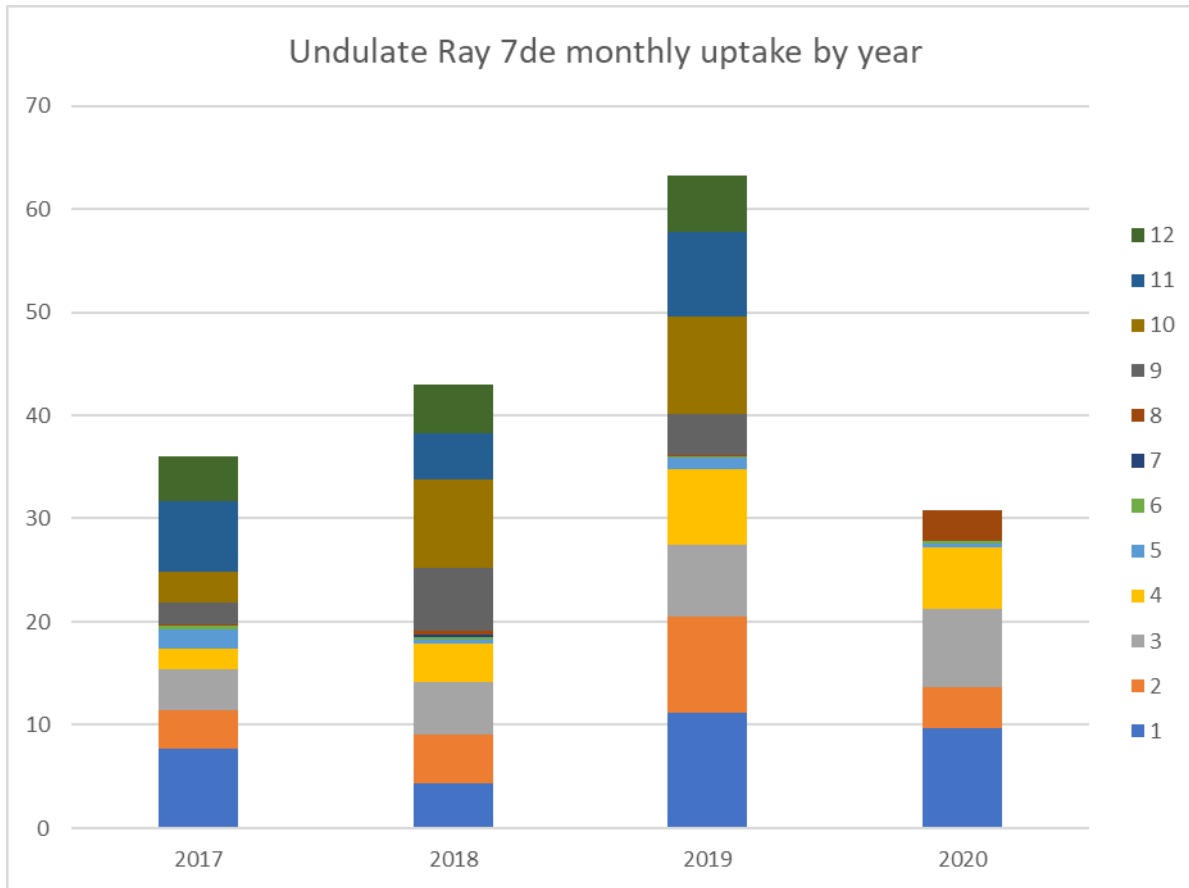
- Uptake double what it was at same point last year.
- Catch limit is 1t compared to 1.2 in Aug last year then 2t September onwards.
- Vessels are leasing.
- 14 vessels landed this stock to date, compared to 18 last year.
- Four vessels have landed over 1t this year compared to two last year.

Under-10m Sole VIIf-g

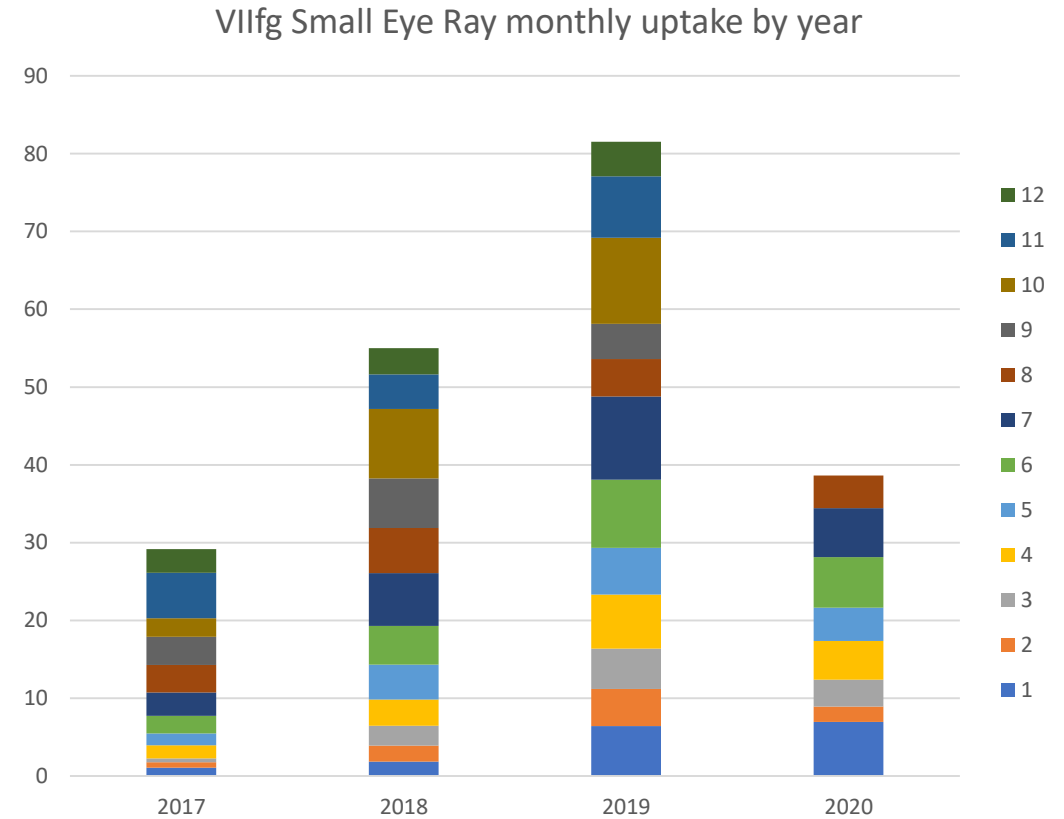


- Uptake reasonable compared to last year but reduced uptake in August.
- Max landing was 500kg in April.
- Catch limit is 2t.

UK Ray Stocks



- By-catch allowance 40kg per trip.
- Current uptake = 31t with 3t landed in August.
- Opened in August this year instead of September.
- Total available 59t.



- By-catch allowance of 2t
- Max landing in August was 1.1t
- Total landed to date = 38.6t
- Total available 65t with 25t remaining, this allows ~6t per month
- Total landed in August 4.2t

Useful links

Uptake Statistics

<https://www.gov.uk/government/statistical-data-sets/quota-use-statistics>

Catch limits

Under-10m <https://www.gov.uk/government/publications/current-catch-limits-10-metres-and-under-pool>

Over-10m <https://www.gov.uk/government/publications/current-catch-limits-over-10-metre-non-sector-pool>

Trading

<https://www.gov.uk/government/publications/fishing-quota-trading-and-swaps>

Catch limit consultation (front page of MMO website during last 7-10 days of each month)

<https://www.gov.uk/government/organisations/marine-management-organisation>