

# Covid-19 n-patient demographics after 1<sup>st</sup> August 2020 compared with whole CO-CIN cohort

Annemarie Docherty, Ewen Harrison, Calum Semple 16/09/2020

Patients admitted to hospital with covid-19 after 1<sup>st</sup> August are younger than the overall cohort (figure 1, table 1). There are fewer patients requiring non-invasive/invasive ventilation. Overall mortality appears lower 12% vs 31% (figure 2), however this may be falsely low given the number of patients still receiving on-going care (could rise to maximum of 29%).

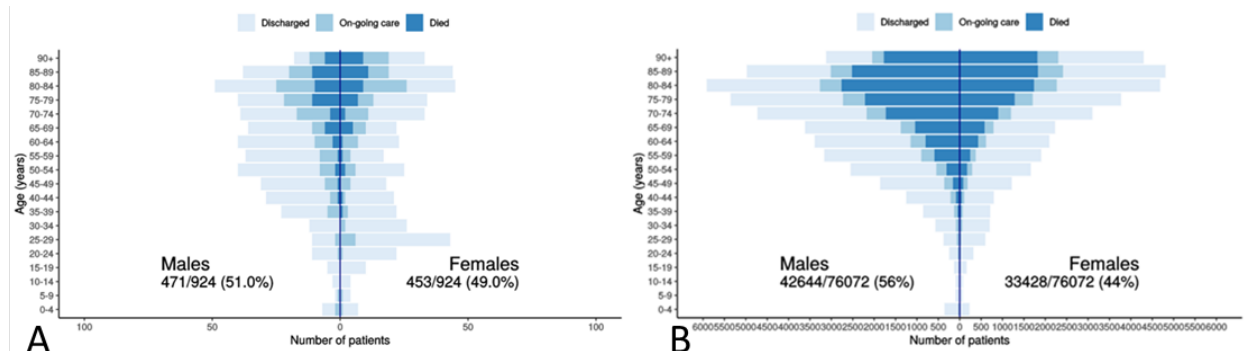


Figure 1: Patients with outcomes (discharged alive/ongoing care/died) stratified by age and sex. A admitted after 1<sup>st</sup> August 2020, B whole cohort.

Table 1: Hospital admissions (n (%)) by ten-year age bands, stratified by sex, and after 1<sup>st</sup> August vs whole cohort.

Age (yrs)	After 01/08/2020		All data	
	Male	Female	Male	Female
80+	106 (23.1)	117 (28.6)	15350 (34.7)	14803 (42.8)
70-79	82 (17.9)	64 (15.6)	10172 (23.0)	6935 (20.0)
61-69	76 (16.6)	35 (8.6)	7067 (16.0)	4353 (12.6)
51-60	73 (15.9)	44 (10.8)	5770 (13.0)	3595 (10.4)
41-50	54 (11.8)	33 (8.1)	3123 (7.1)	2030 (5.9)
31-40	34 (7.4)	43 (10.5)	1439 (3.3)	1418 (4.1)
21-30	17 (3.7)	49 (12.0)	617 (1.4)	915 (2.6)
11-20	7 (1.5)	10 (2.4)	226 (0.5)	237 (0.7)
<10	9 (2.0)	14 (3.4)	461 (1.0)	309 (0.9)

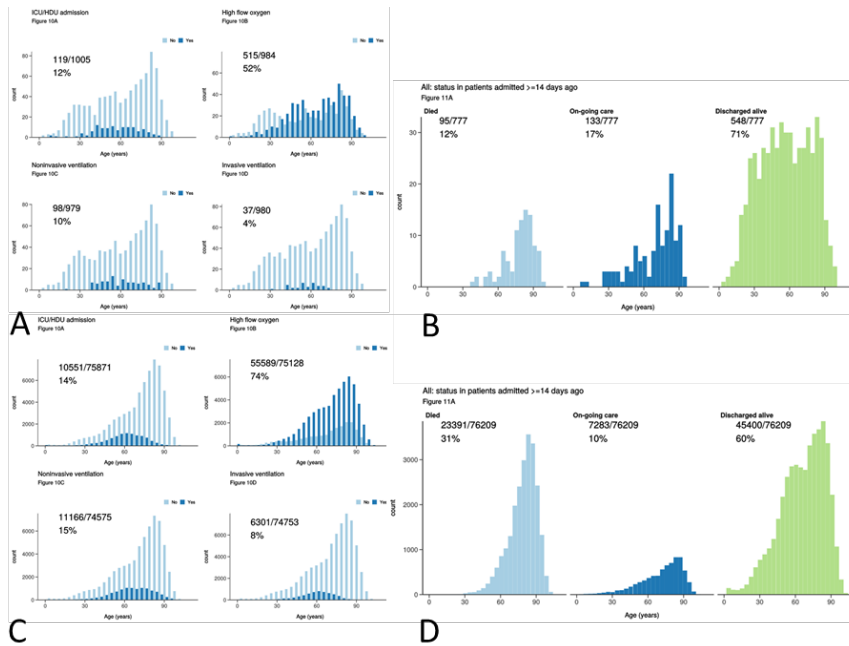


Figure 2: A&B 1<sup>st</sup> August onwards, C&D whole cohort. A Levels of treatment. B Outcomes

### Caveats

This rapid report is based on dynamic data which by the nature of the study has not been verified at source.

16 September 2020