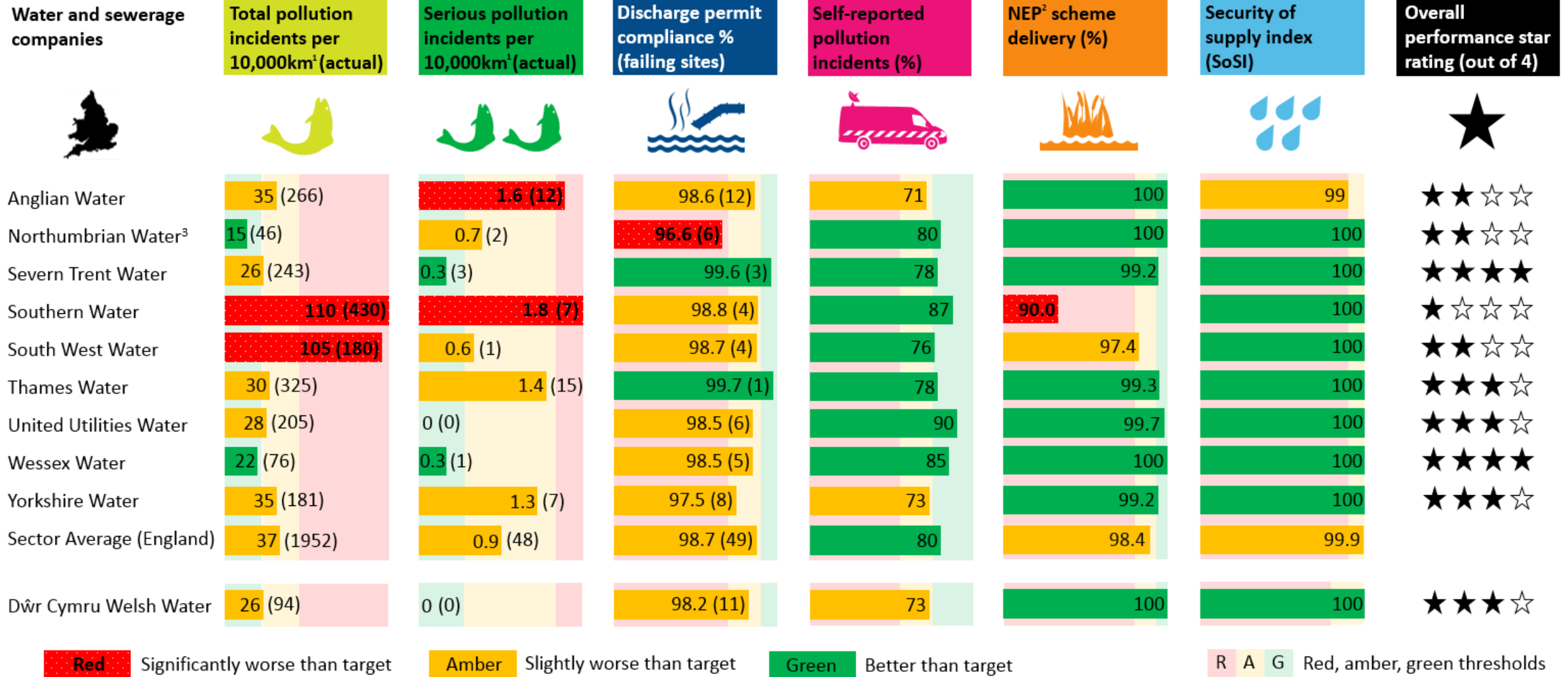


Water and sewerage companies

Environmental Performance Assessment 2019



Note: These results are drawn, in part, from information submitted by the companies and may change as a result of subsequent audits and checking

¹ of sewer length ² National Environment Programme ³ Northumbrian Water had 6 discharge permit compliance metric failures. Three of these were due to sample shortfalls associated with laboratory analysis not meeting quality control standards and are not associated with any known environmental impact

Source: Environment Agency & Natural Resources Wales

Water and sewerage companies sector in England

Main facts



Water and sewerage companies in England



Serves around 53.5 million people



Around 19,000 environmental permits



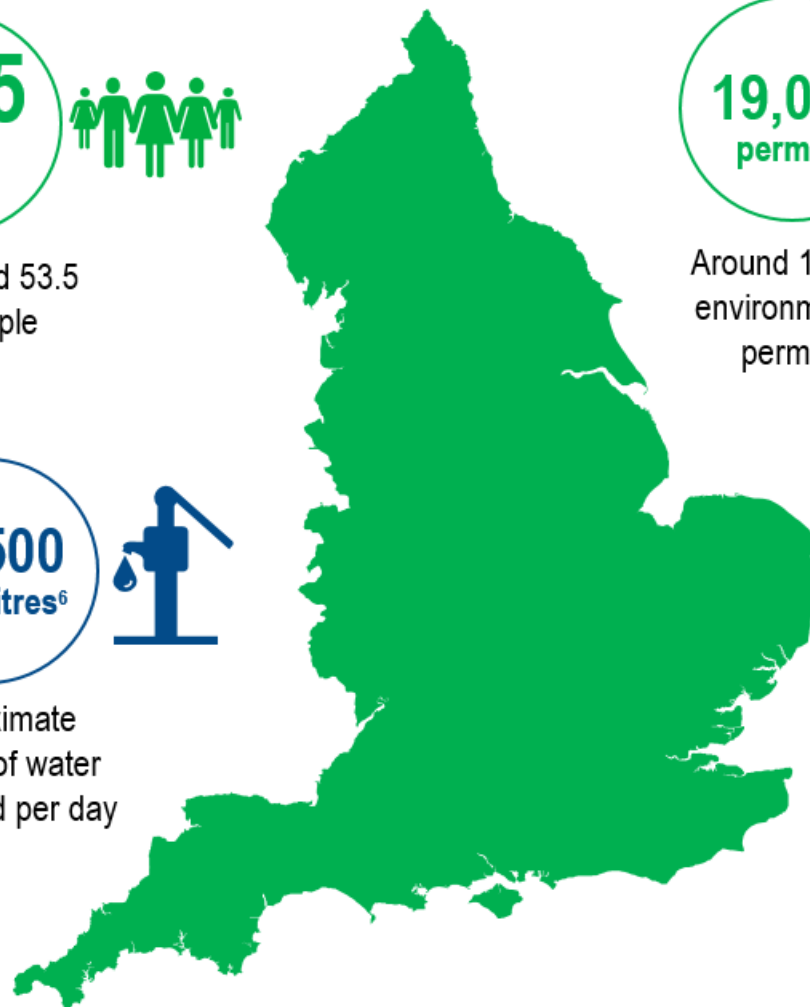
Approximate number of properties internally flooded by sewage⁵



Leakage as a percent of all water abstracted is 20%⁵



Approximate amount of water abstracted per day



Around 3,500 permitted sewage treatment works with numeric limits



Approximate amount of sludge used or disposed of in 2019

⁵ Between April 2018 and March 2019

⁶ Megalitre equal to a million litres