

The weekly surveillance report in England

Coronavirus (COVID-19) weekly data: 09 September 2020 to 15 September 2020

Breakdown of testing by Pillars of the UK Government's COVID-19 testing programme:

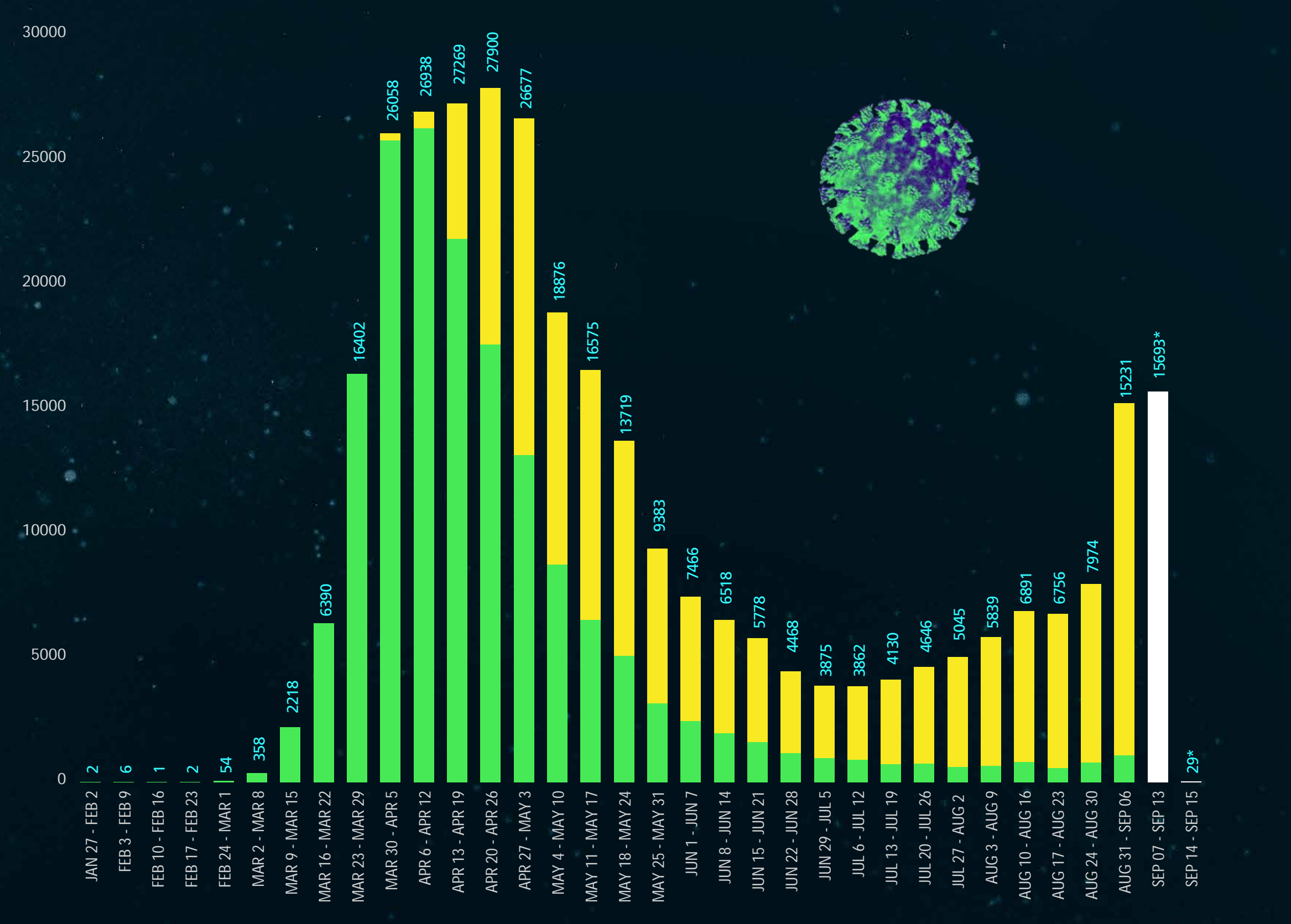
Pillar 1 + 2
combined data from both Pillar 1 and Pillar 2 of the UK Government's COVID-19 testing programme

Pillar 1
data from swab testing in PHE labs and NHS hospitals for those with a clinical need, and health and care workers

Pillar 2
data from swab testing for the wider population, as set out in government guidance

Pillar 4
data from swab testing for PHE, the Office for National Statistics (ONS), research, academic, and scientific partners

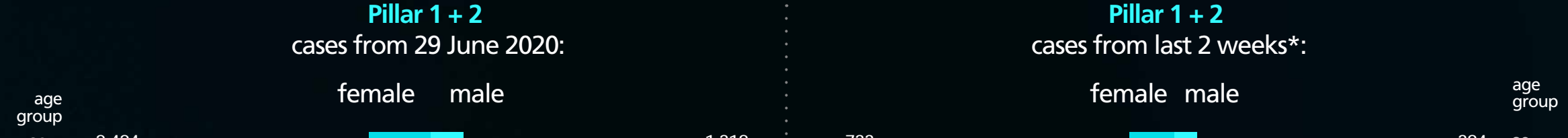
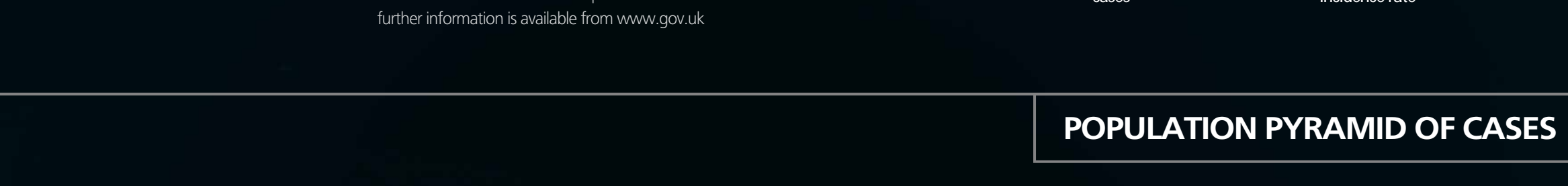
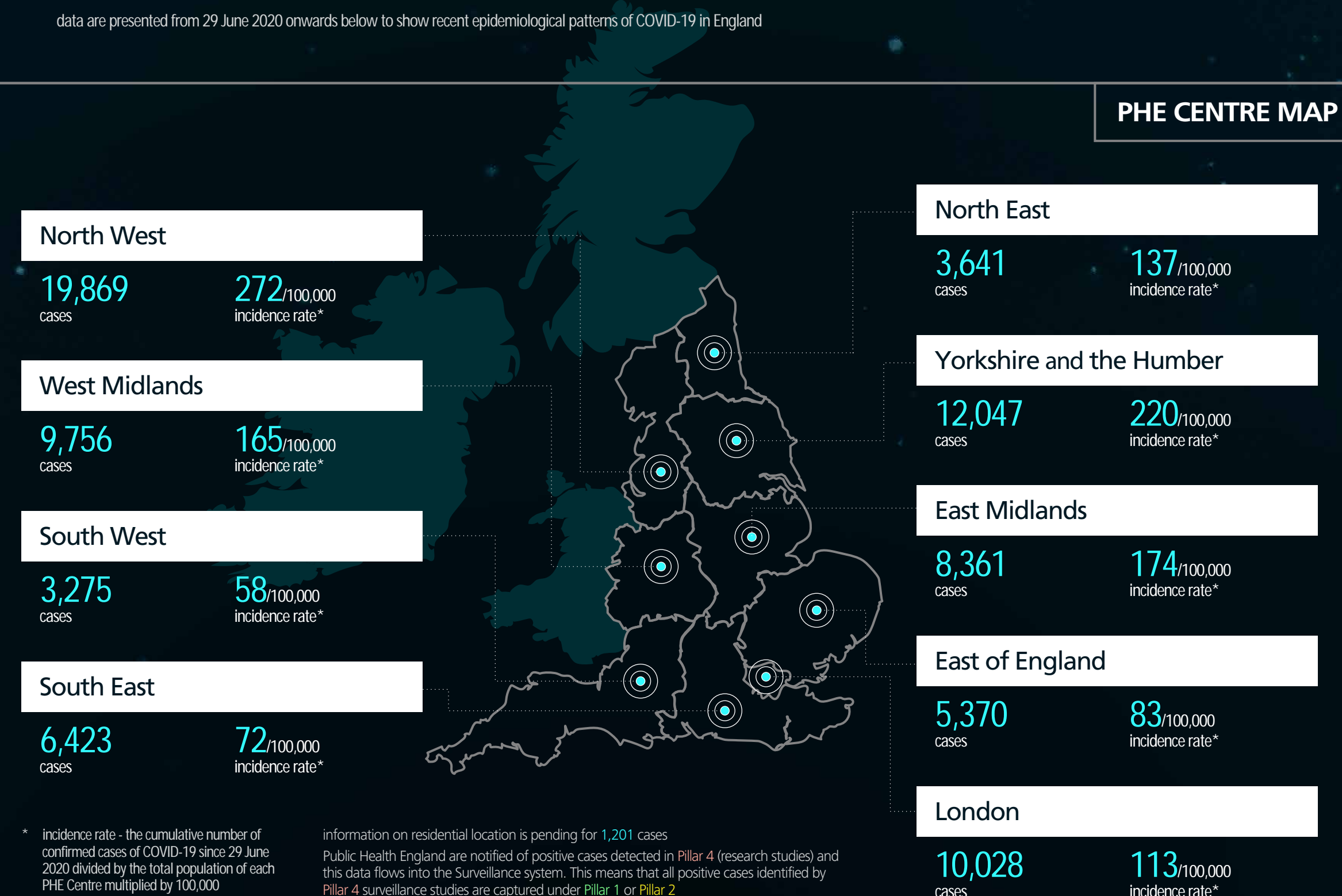
Cases data



* the most recent week is a partial week and only data from more than five days ago can be considered complete
all data are shown by the week the specimen was taken
all data may be subject to change over time

cumulative data from: 29 June 2020 to 15 September 2020 in England

data are presented from 29 June 2020 onwards below to show recent epidemiological patterns of COVID-19 in England



Mortality data

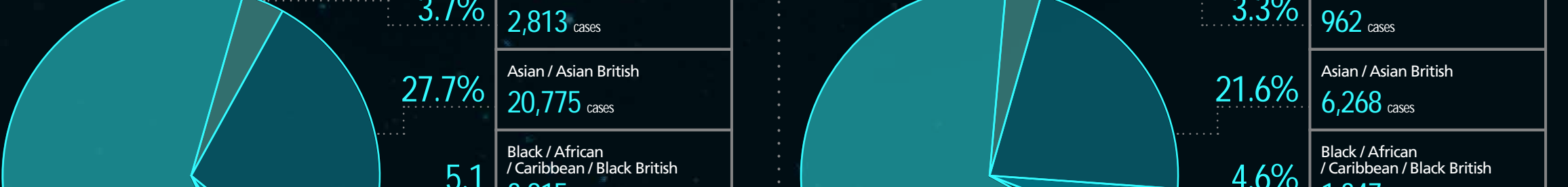
deaths within 28 days
a death in a person with a laboratory-confirmed positive COVID-19 test and who died within (equal to or less than) 28 days of the first positive specimen date

deaths within 60 days/on death certificate
a death in a person with a laboratory-confirmed positive COVID-19 test and who either died within 60 days of the first specimen date or who died more than 60 days after the first specimen date, only if COVID-19 is mentioned on the death certificate

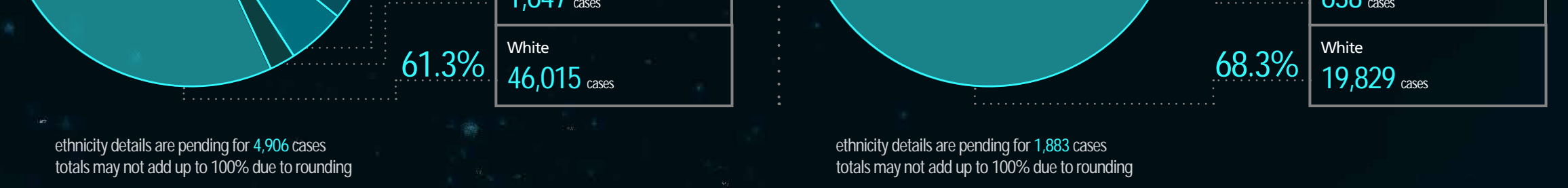


cumulative data from: 29 June 2020 to 15 September 2020 in England

deaths within 28 days
a death in a person with a laboratory-confirmed positive COVID-19 test and who died within (equal to or less than) 28 days of the first positive specimen date



deaths within 60 days/on death certificate
a death in a person with a laboratory-confirmed positive COVID-19 test and who either died within 60 days of the first specimen date or who died more than 60 days after the first specimen date, only if COVID-19 is mentioned on the death certificate



data from: 16 March 2020 to 13 September 2020 in England

source: PHE Covid-19 Hospitalisations in England Surveillance System

HOSPITALISATION RATE
new hospital week confirmed COVID-19 disease per 100,000 people



further epidemiological data are available in the weekly surveillance report that accompanies this summary