

The weekly surveillance report in England

Coronavirus (COVID-19) weekly data: 02 September 2020 to 08 September 2020

Breakdown of testing by Pillars of the UK Government's COVID-19 testing programme:

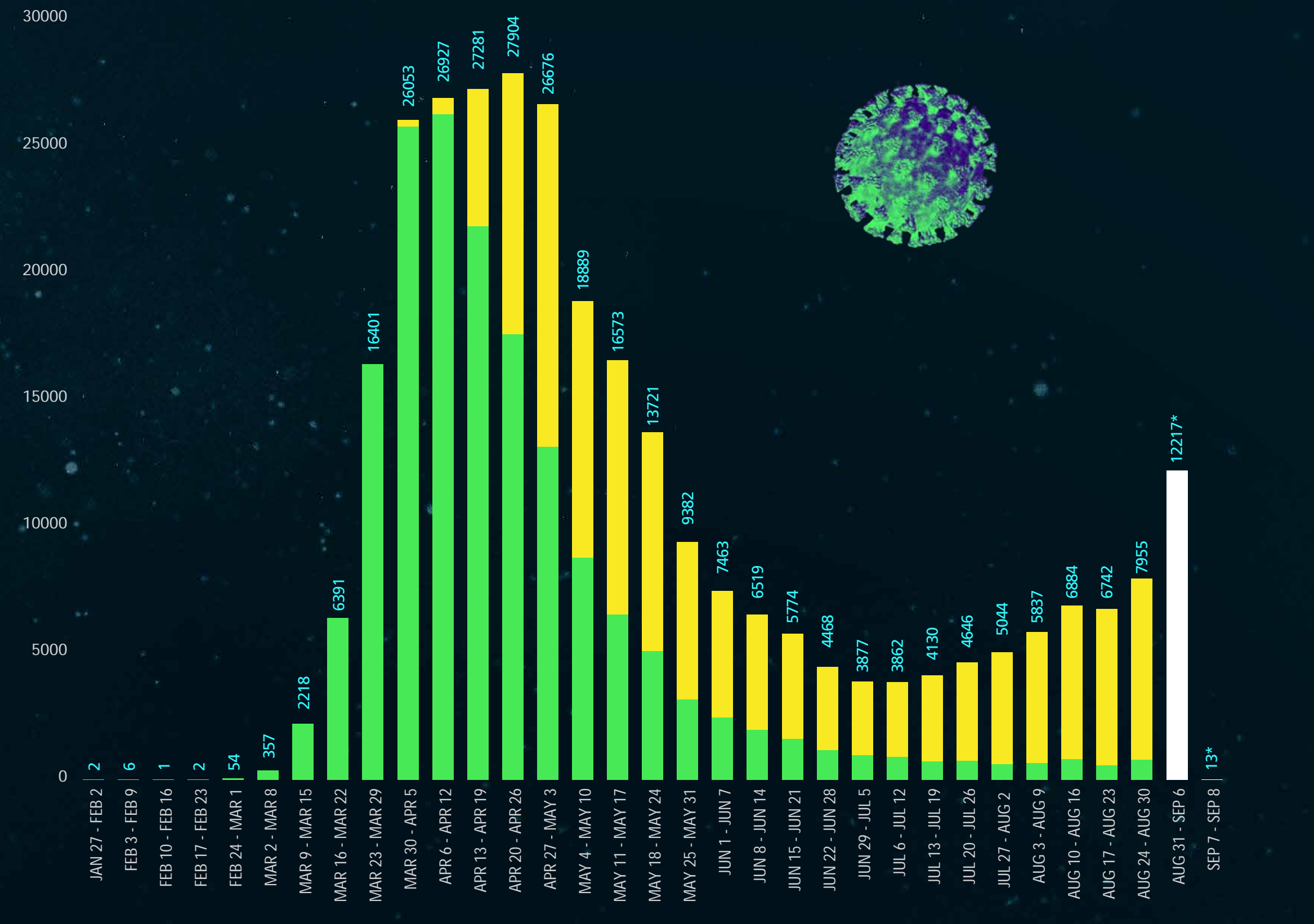
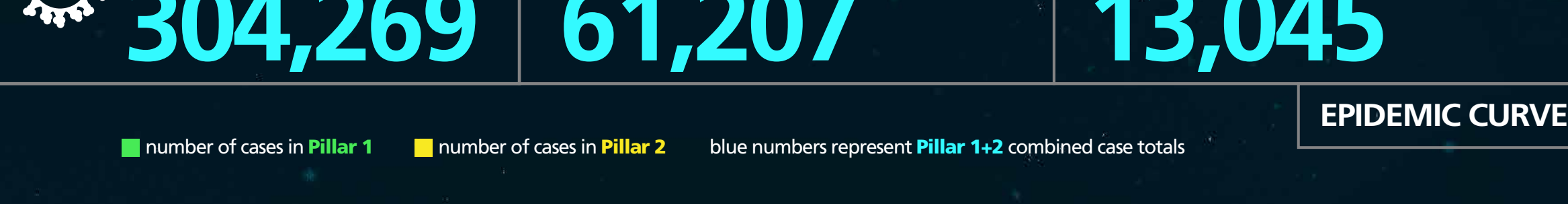
Pillar 1 + 2
combined data from both Pillar 1 and Pillar 2 of the UK Government's COVID-19 testing programme

Pillar 1
data from swab testing in PHE labs and NHS hospitals for those with a clinical need, and health and care workers

Pillar 2
data from swab testing for the wider population, as set out in government guidance

Pillar 4
data from swab testing for PHE, the Office for National Statistics (ONS), research, academic, and scientific partners

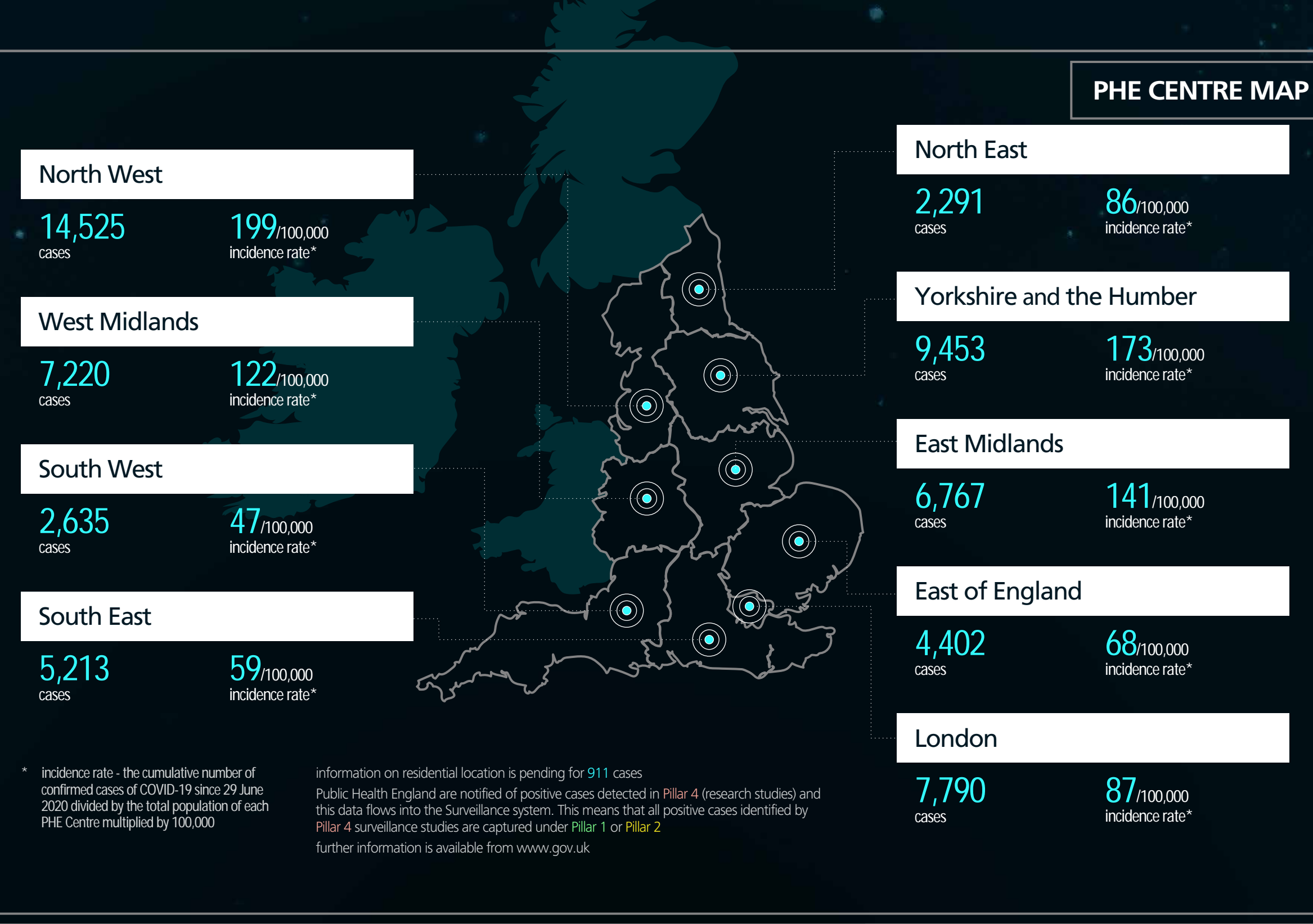
Cases data



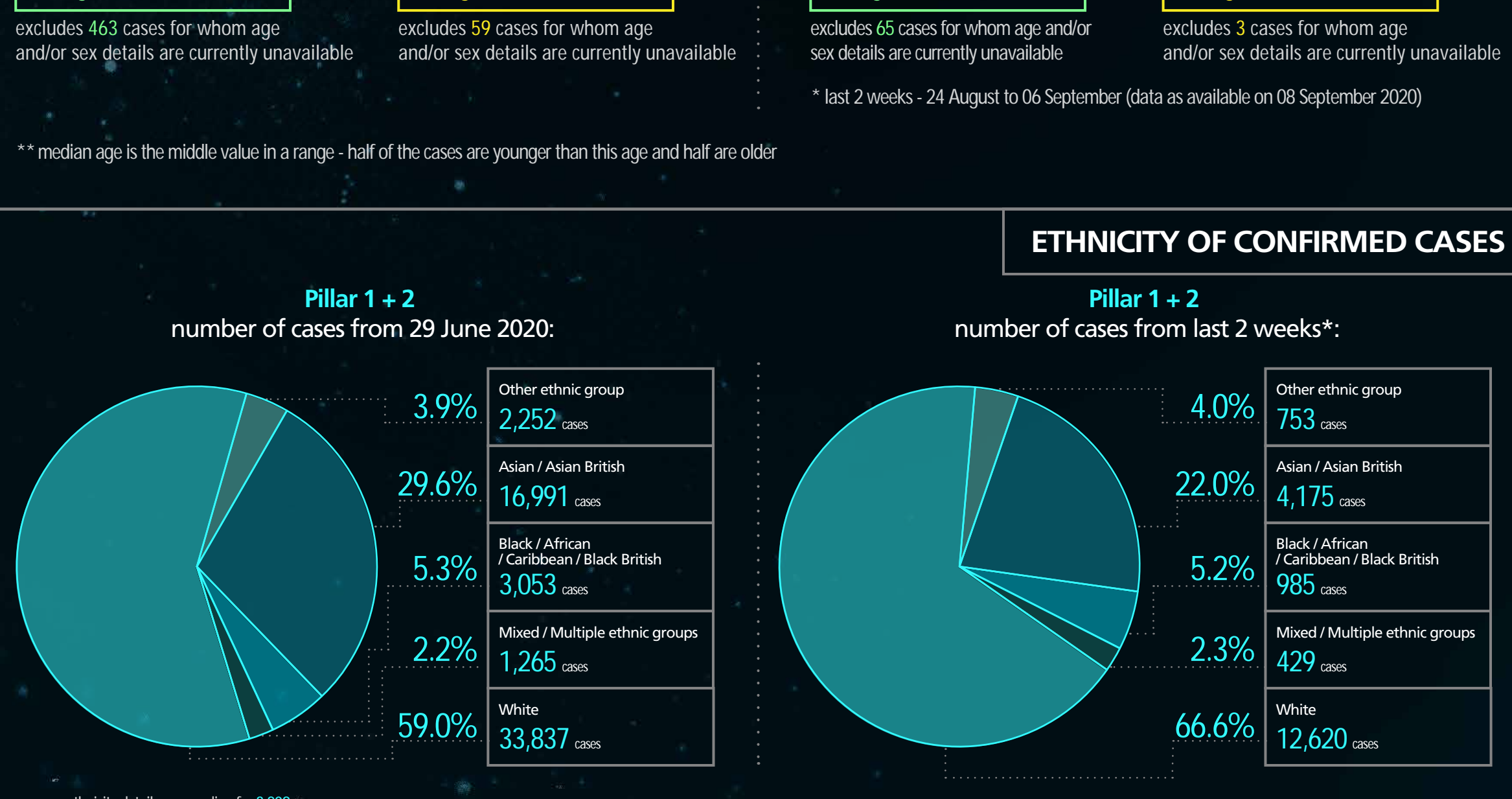
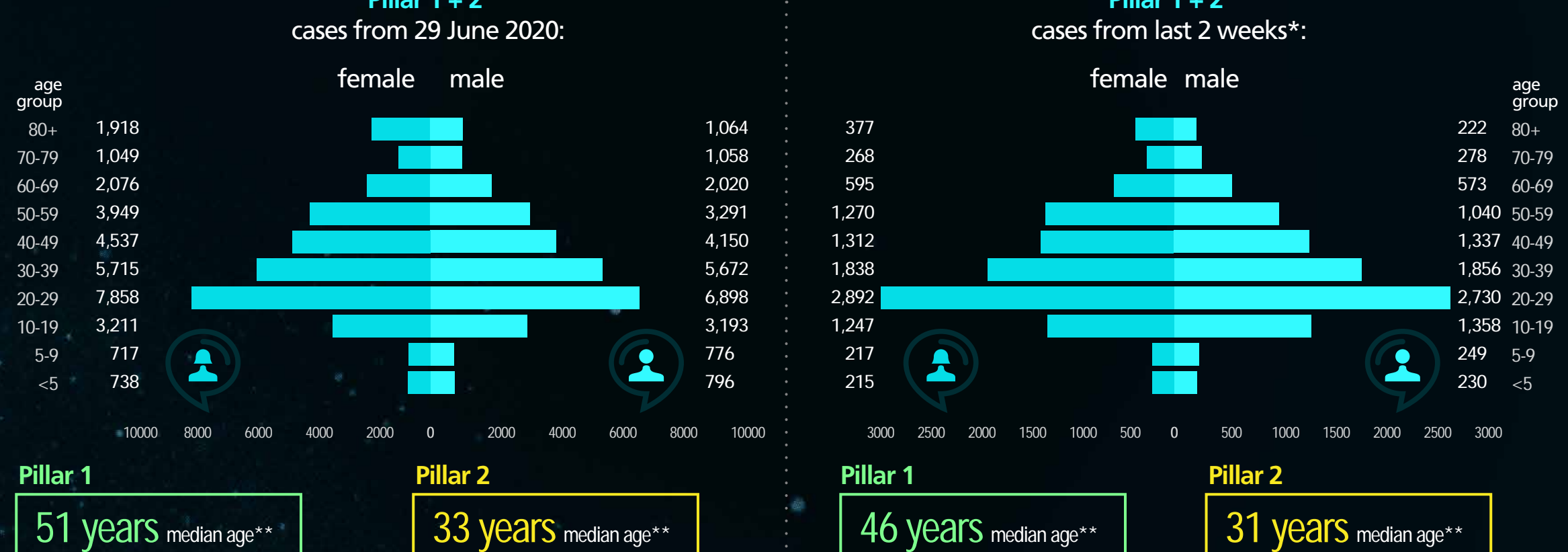
* the most recent week is a partial week and only data from more than five days ago can be considered complete
the data are shown by the week the specimen was taken
all data may be subject to change over time

cumulative data from: 29 June 2020 to 08 September 2020 in England

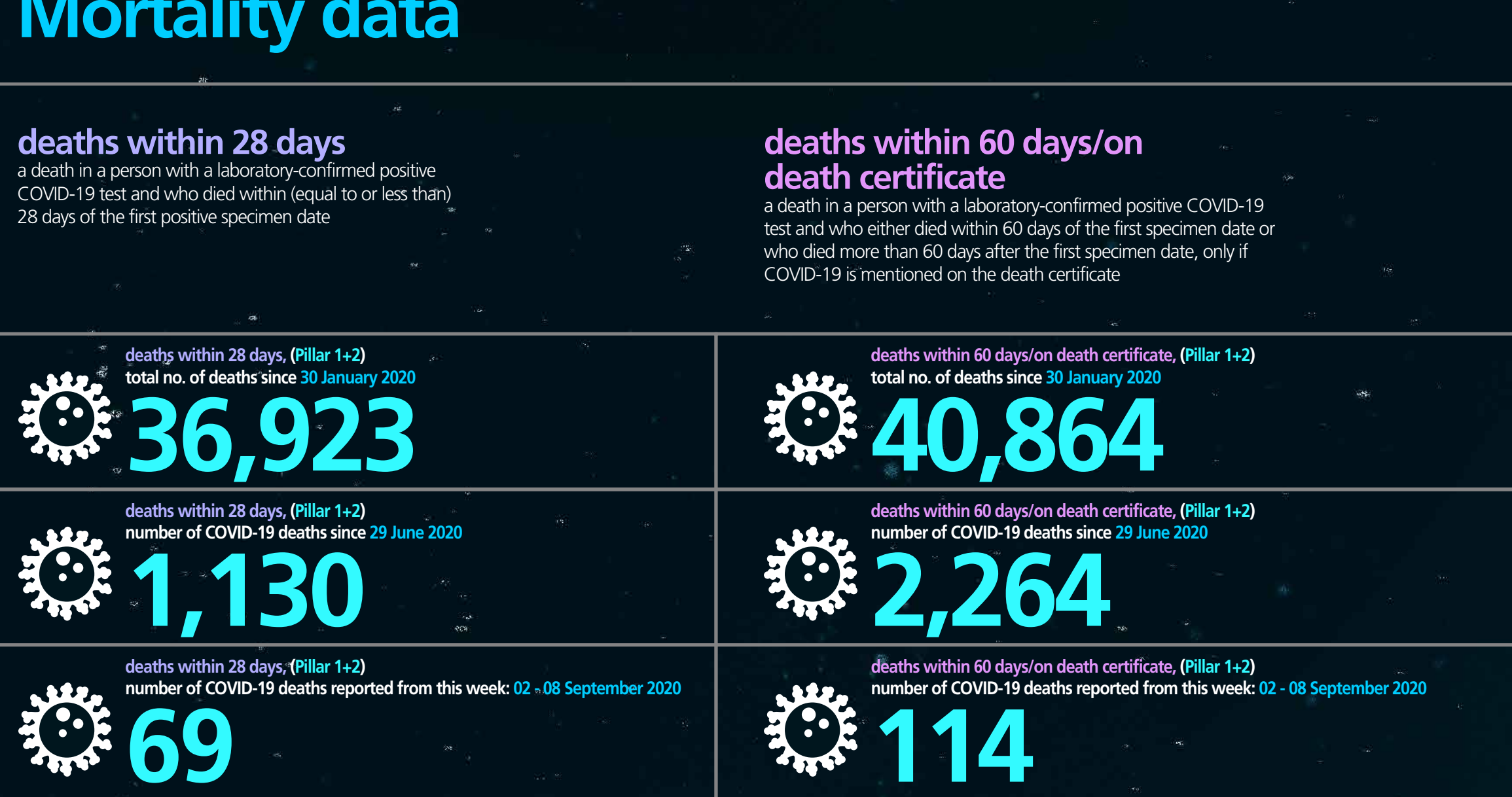
data are presented from 29 June 2020 onwards below to show recent epidemiological patterns of COVID-19 in England



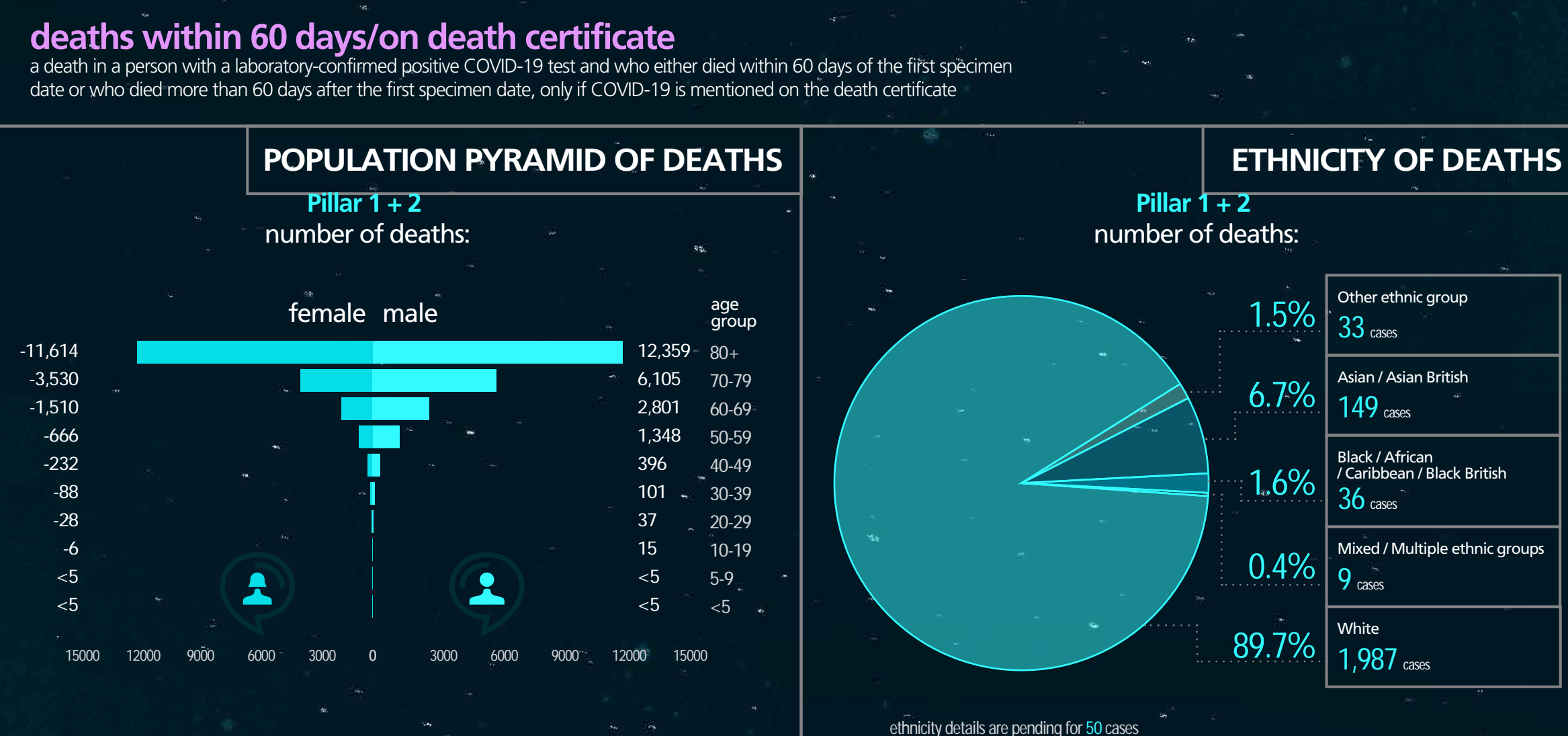
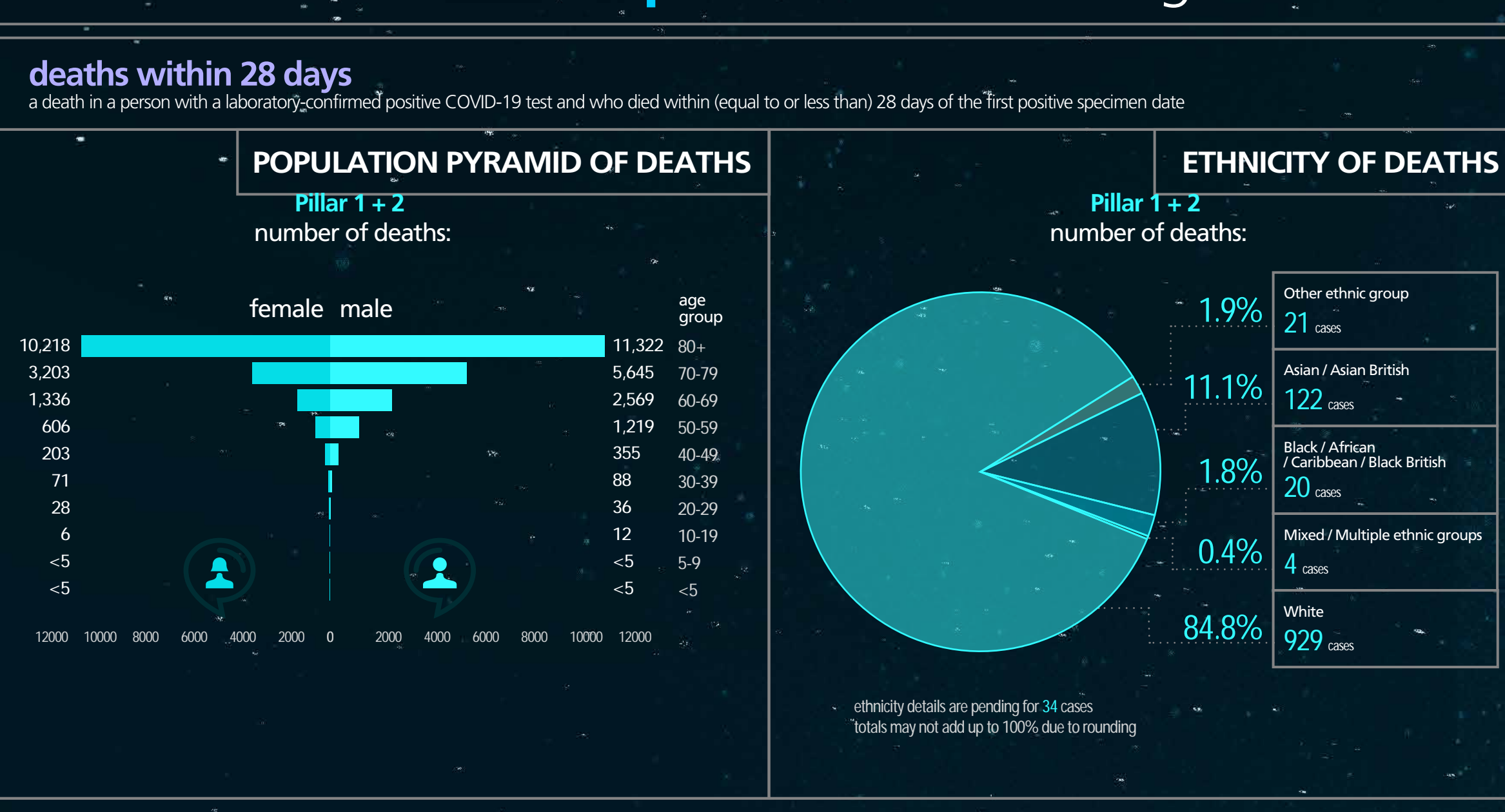
information on residential location is pending for 911 cases
Public Health England are notified of positive cases detected in Pillar 4 (research studies) and this data flows into the Surveillance system. This means that all positive cases identified by Pillar 4 surveillance studies are captured under Pillar 1 or Pillar 2
further information is available from www.gov.uk



Mortality data



cumulative data from: 29 June 2020 to 08 September 2020 in England



data from: 16 March 2020 to 06 September 2020 in England

source: PHE Covid-19 Hospitalisations in England Surveillance System



further epidemiological data are available in the weekly surveillance report that accompanies this summary

STAY ALERT CONTROL THE VIRUS SAVE LIVES