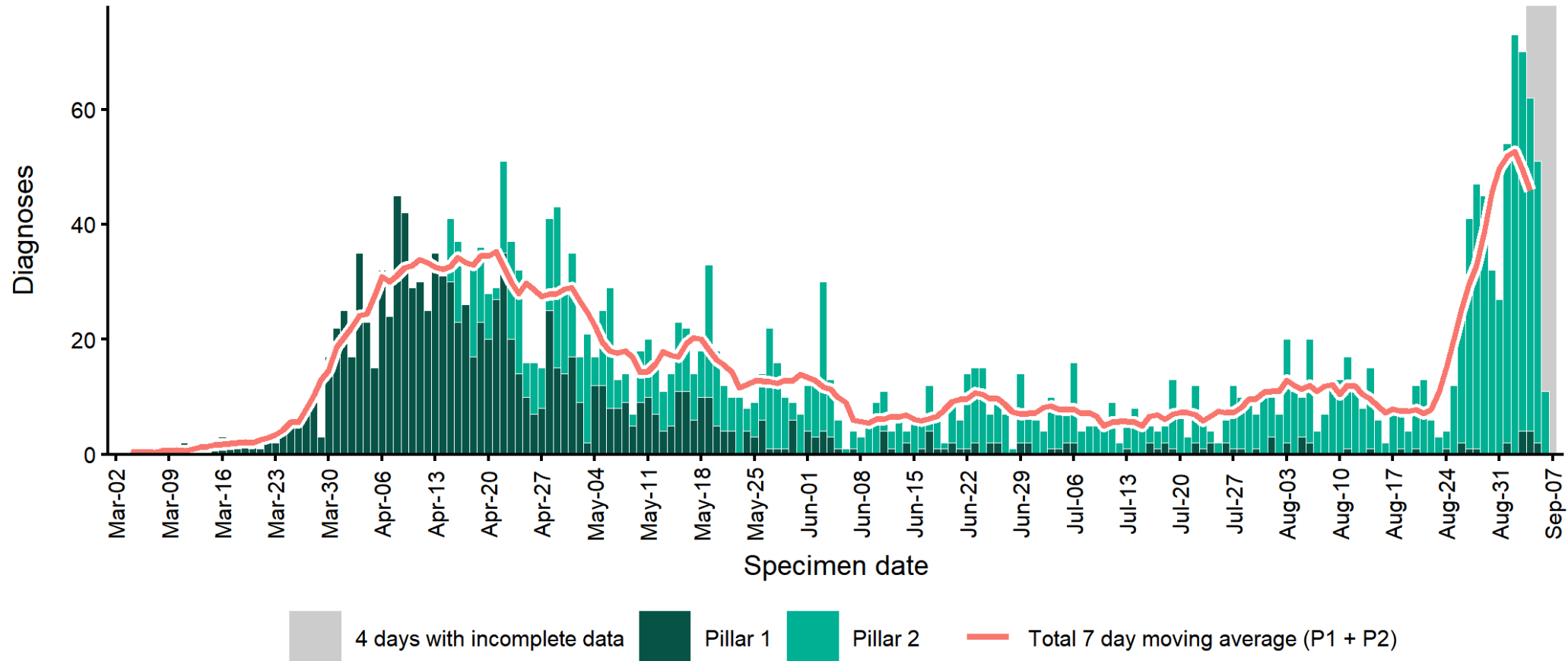


# BOLTON

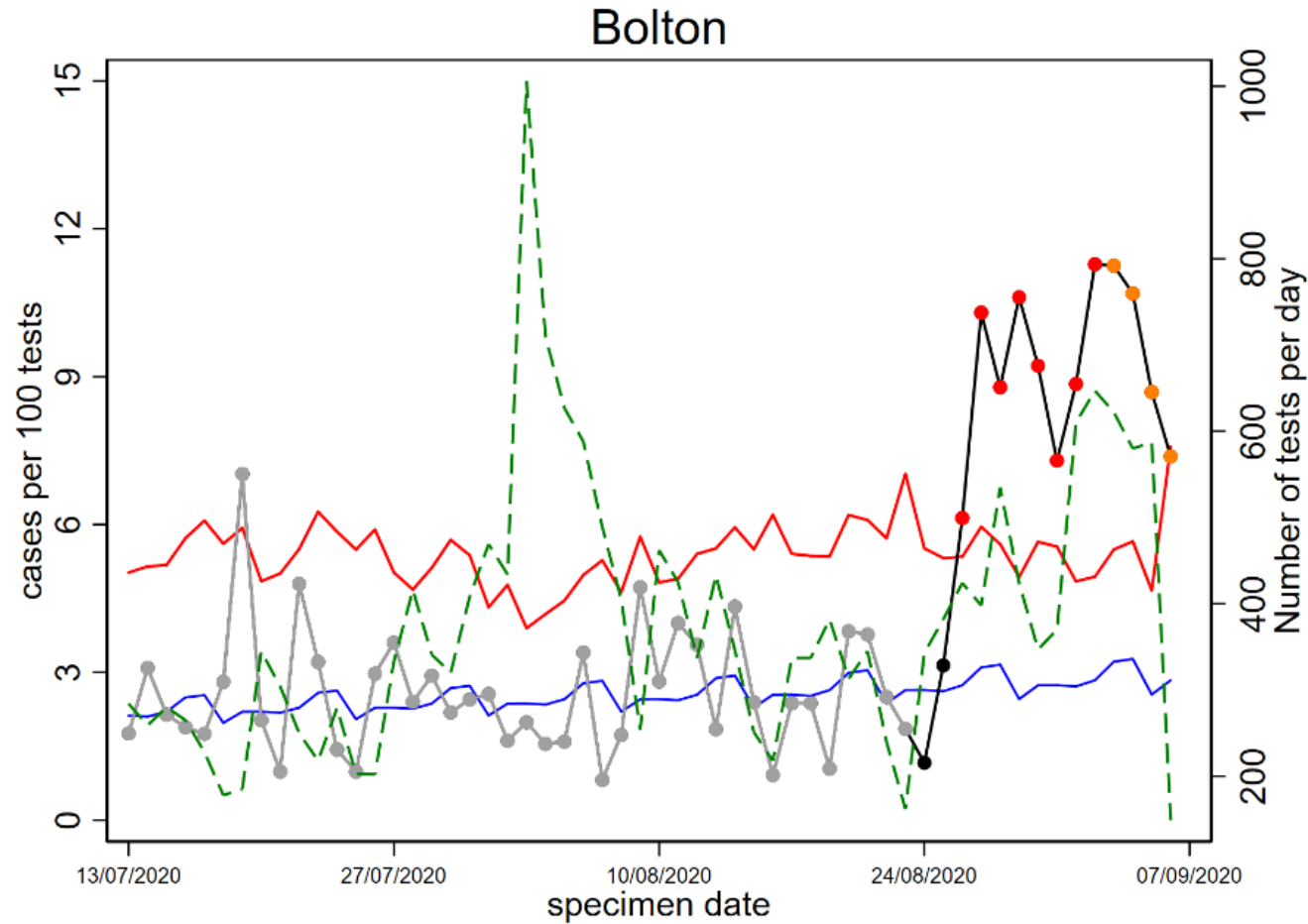
## Cases and persons tested up to September 7 2020

Daily cases by pillar from 1/3/2020



# BOLTON

## Cases and persons tested up to September 7 2020



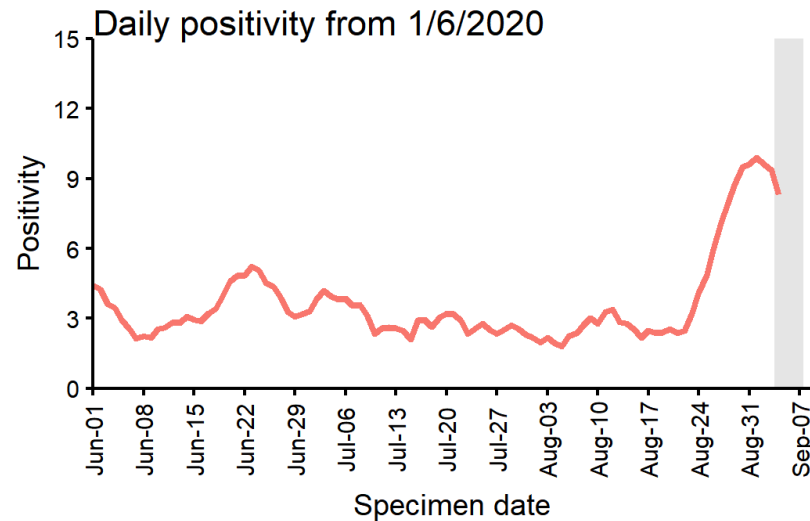
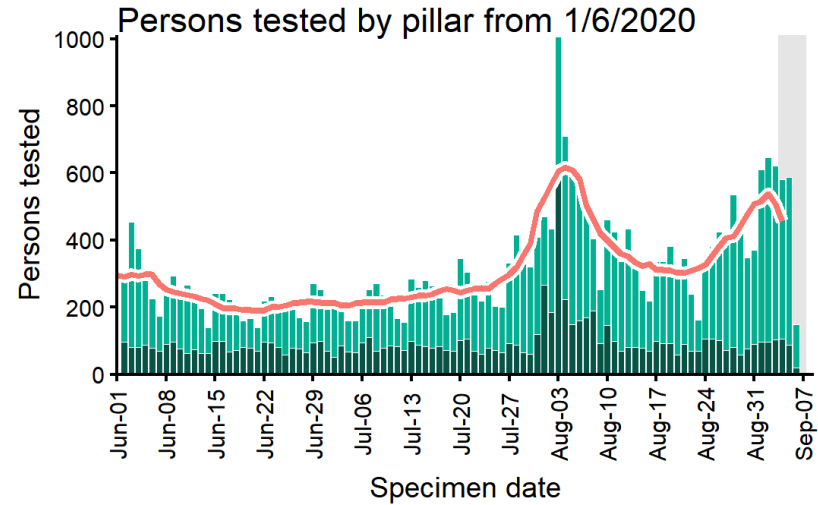
Time-series plots (combined Pillar 1 and 2 data).

- blue line is the expected or average number of cases per 100 tests each day, predicted from the exceedance algorithm regression model
- red line is the 99% threshold
- grey line and points are the observed number of cases per 100 tests in the baseline period, i.e. the six weeks of data that are used in the regression model
- black line and points are the observed number of cases per 100 tests in the 14-day investigation period – red points are those above the 99% threshold
- orange points are the observed number of cases per 100 tests in the last four days, and are subject to change due to delays in reporting.
- green dashed line is the total number of tests (pillar 1 and pillar 2 tests combined) each day in the LTLA.

# BOLTON

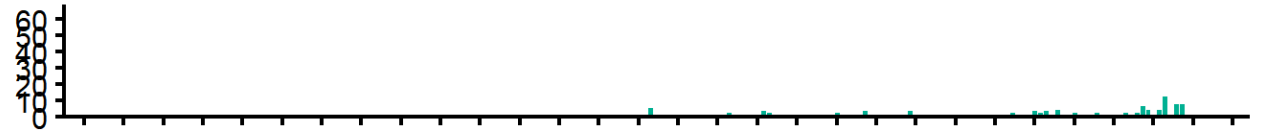
## Cases and persons tested up to September 7 2020

Daily cases by pillar from 1/3/2020

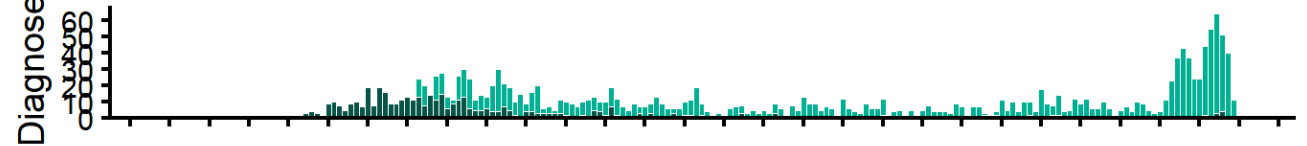


Daily cases by age group from 1/3/2020

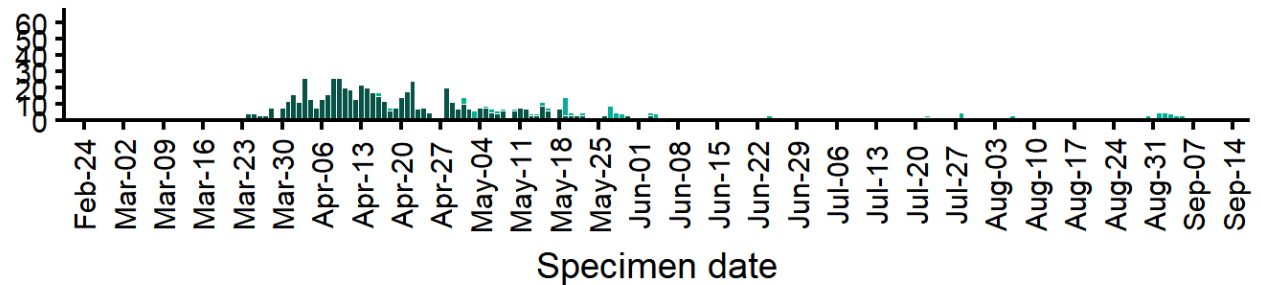
### <18 years



### 18-64 years



### 65+ years



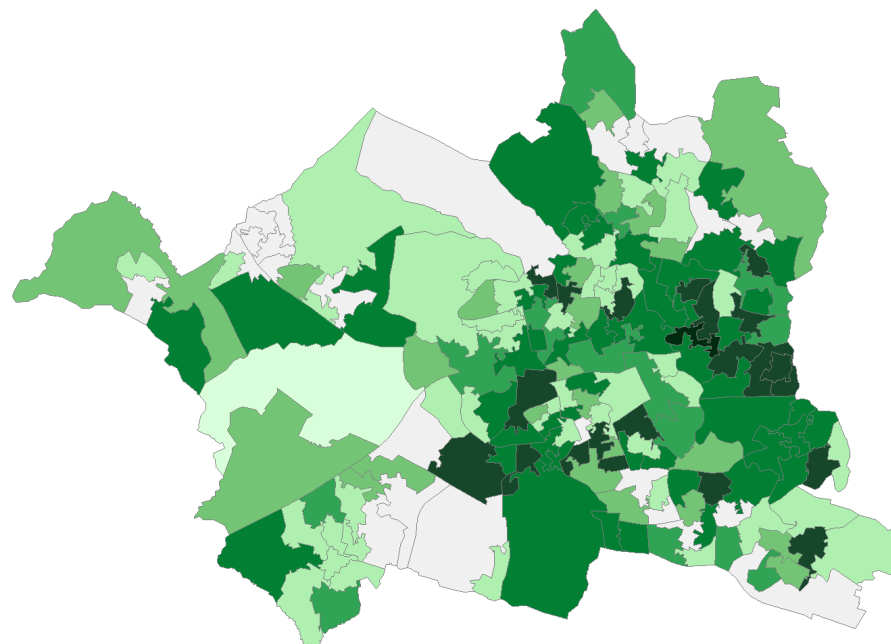
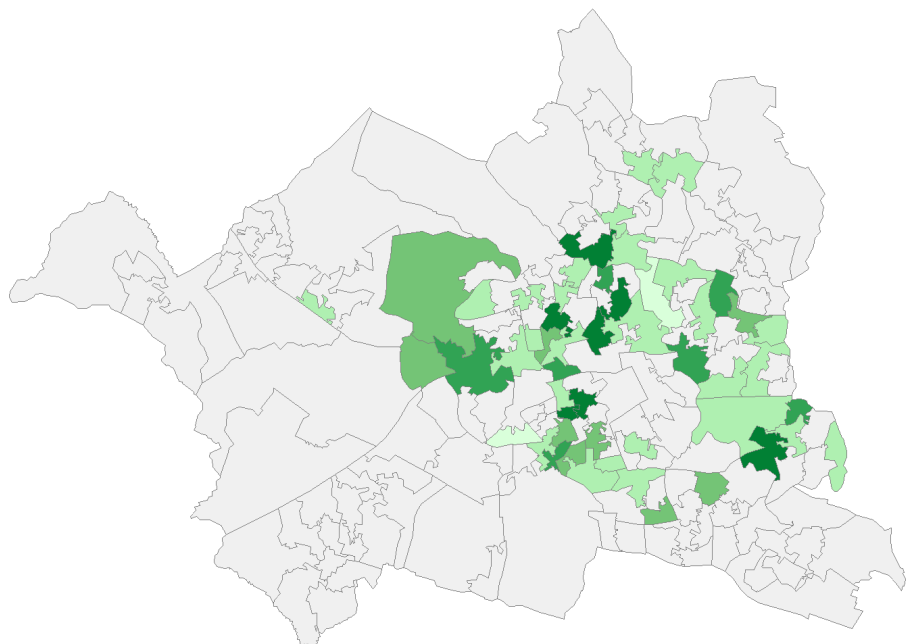
4 days with incomplete data
  Pillar 1
  Pillar 2
  Total 7 day moving average (P1 + P2)

# BOLTON

## COVID-19 rates and situations by LSOA (Lower Super Output Area)

Prior 14 day period (2020-08-11 to 2020-08-24)

Past 14 days (2020-08-25 to 2020-09-07)



Rate

- 0
- 1-49 per 100,000
- 50-99 per 100,000
- 100-149 per 100,000
- 150-199 per 100,000
- 200-399 per 100,000
- 400-799 per 100,000
- 800-1199 per 100,000