

The weekly surveillance report in England

Coronavirus (COVID-19)

week: 22 July 2020 to 28 July 2020

cumulative data from:

30 January 2020 to 28 July 2020 in England

Breakdown of testing by Pillars of the UK Government's COVID-19 testing programme:

Pillar 1 + 2

combined data from both Pillar 1 and Pillar 2 of the UK Government's COVID-19 testing programme

Pillar 1

data from swab testing in PHE labs and NHS hospitals for those with a clinical need, and health and care workers

Pillar 2

data from swab testing for the wider population, as set out in government guidance



total number of COVID-19 cases (Pillar 1+2)

259,022



number of COVID-19 cases reported this week (Pillar 1+2)

4,503

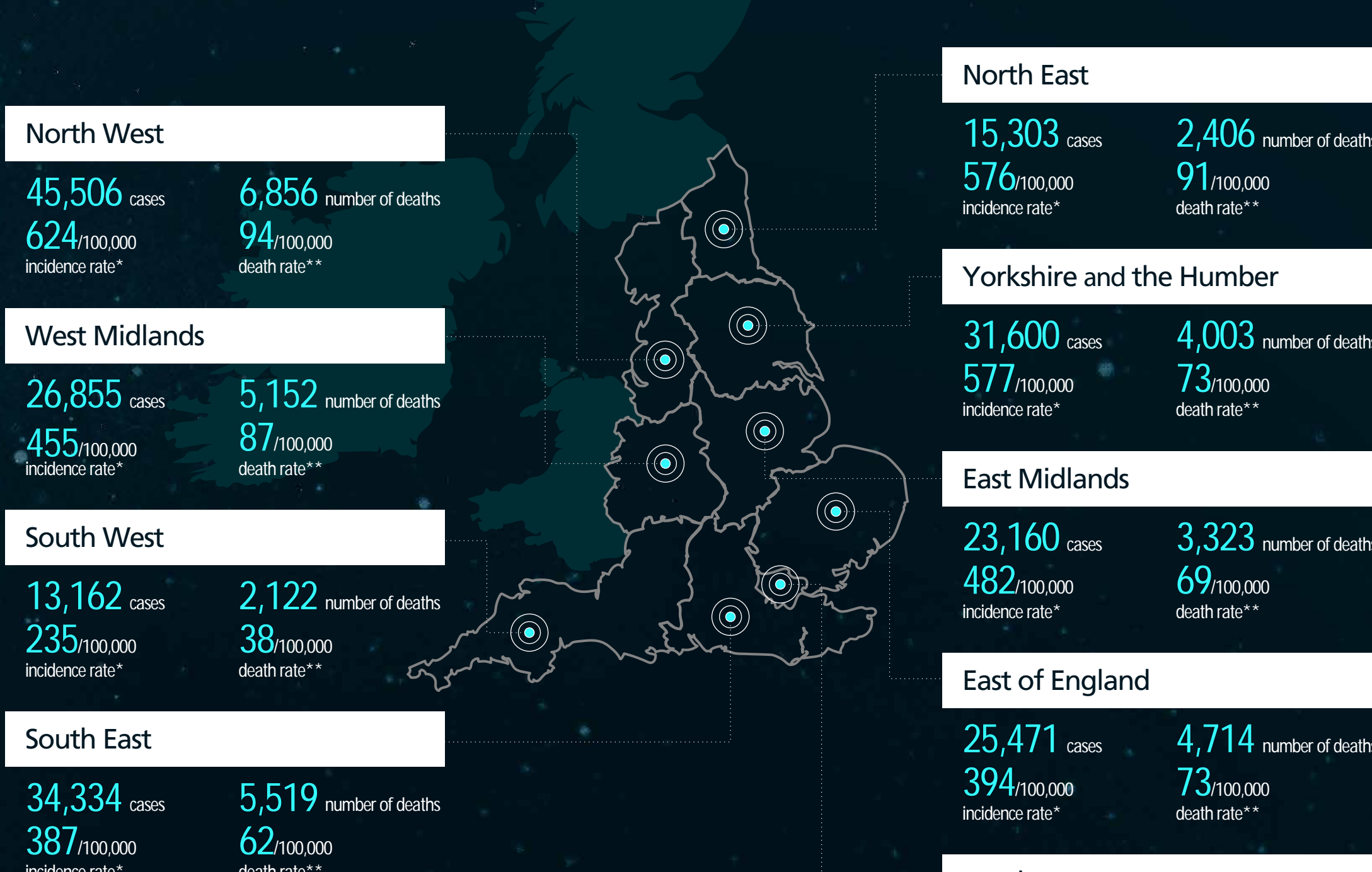
total number of deaths (Pillar 1+2)

41,282

number of COVID-19 deaths reported this week (Pillar 1+2)

454

PHE CENTRE MAP



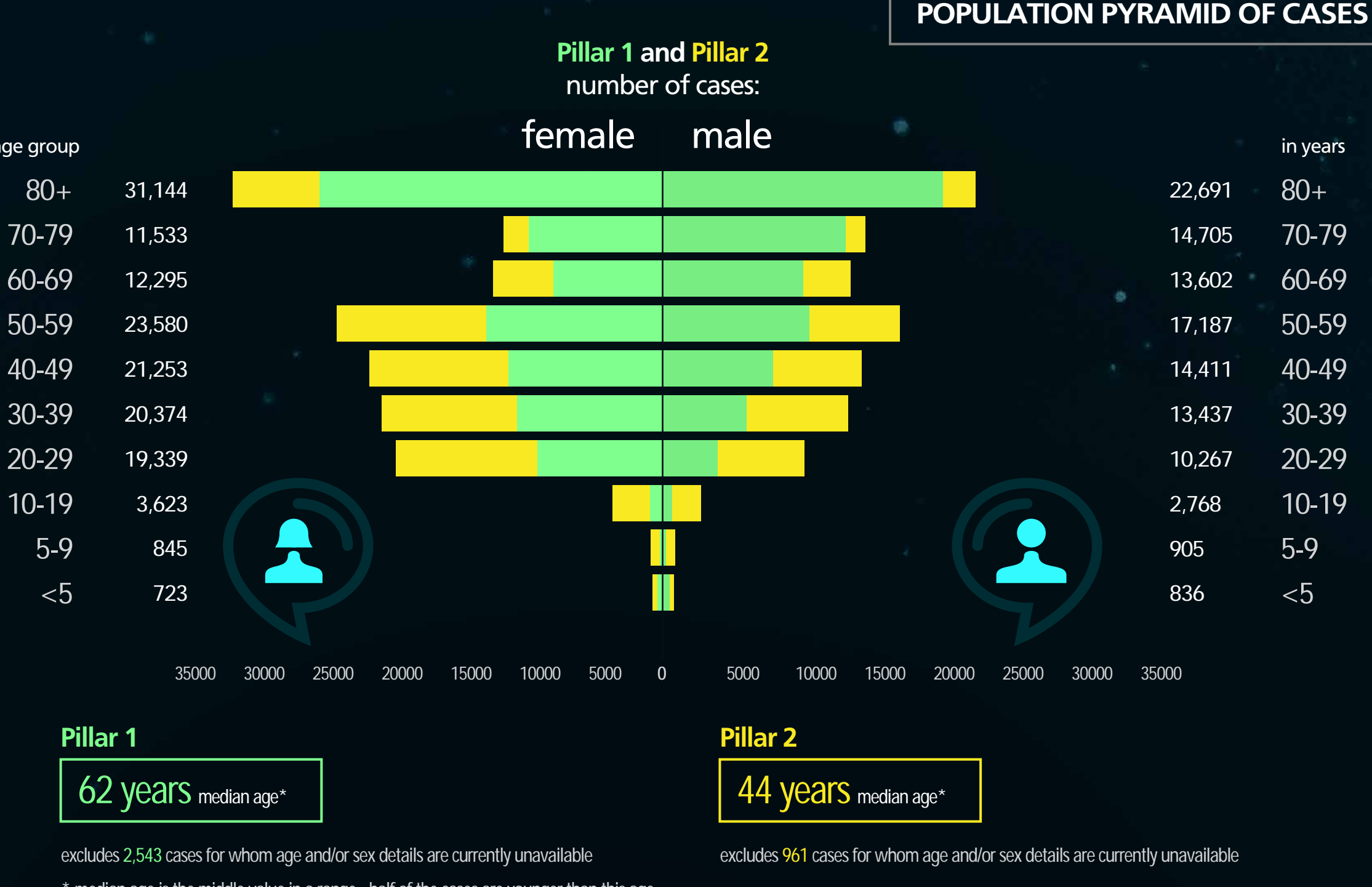
* incidence rate - the cumulative number of confirmed cases of COVID-19 since 30 January 2020 divided by the total population of each PHE Centre multiplied by 100,000

** death rate - the total number of people who have died in England and had tested positive for COVID-19 since 30 January 2020 divided by the total population of each PHE Centre multiplied by 100,000

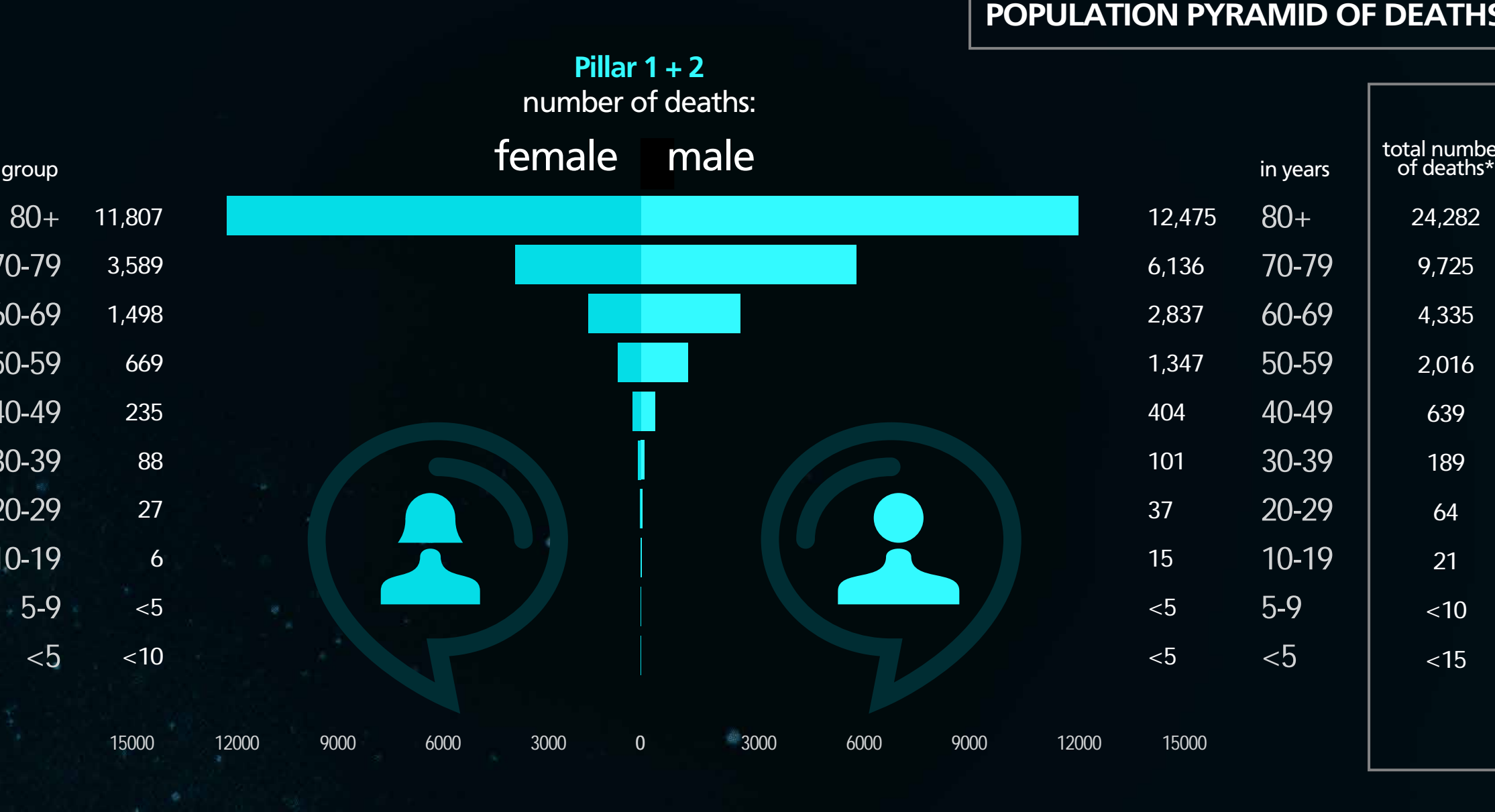
information on residential location is pending for 8466 cases and 330 deaths the total number of cases reported this week includes 78 cases counted in Pillar 1 that PHE were notified of this week but which relate to samples taken since March number of deaths with lab-confirmed COVID-19 in all settings as of 5pm on Monday

further information is available from www.gov.uk

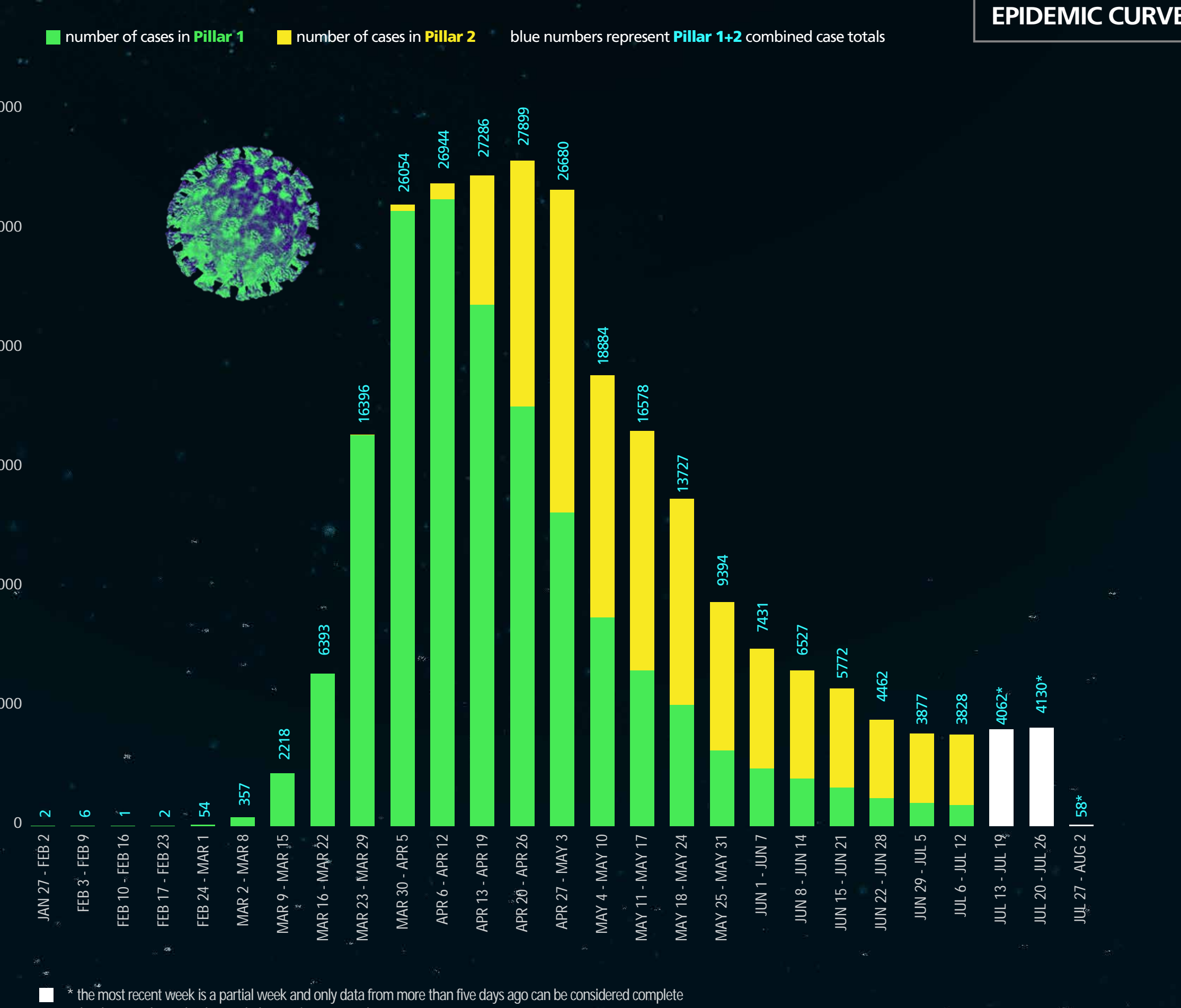
POPULATION PYRAMID OF CASES



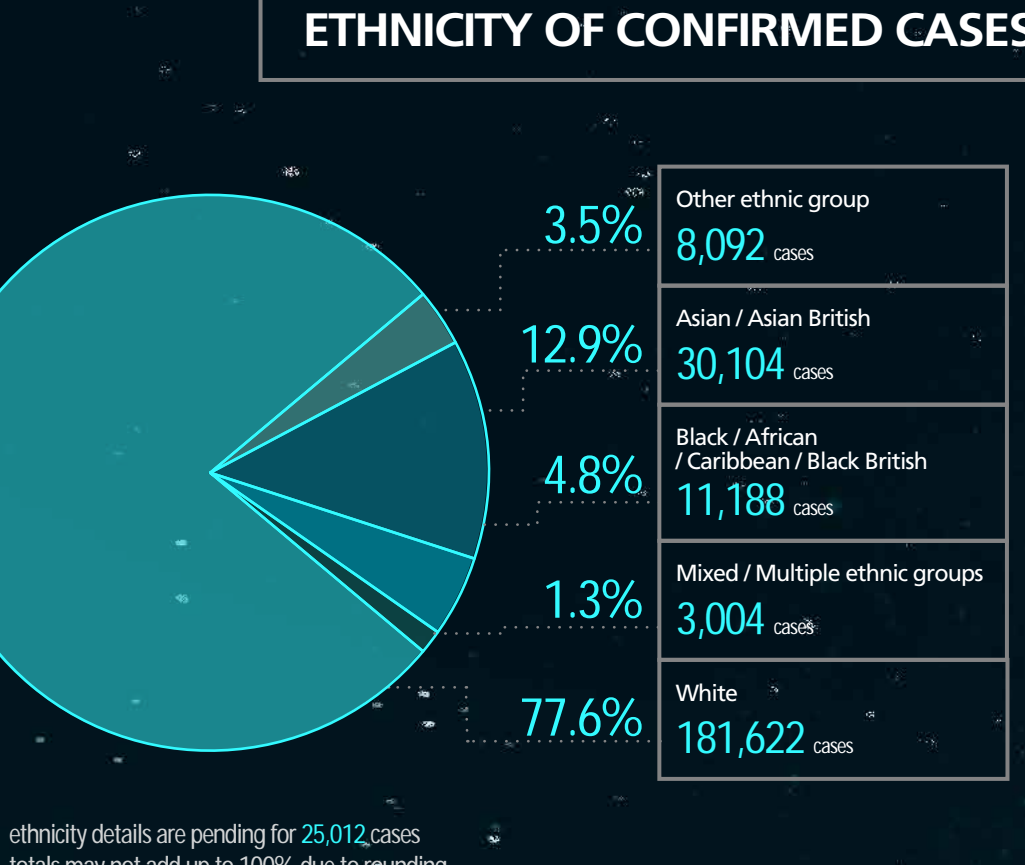
POPULATION PYRAMID OF DEATHS



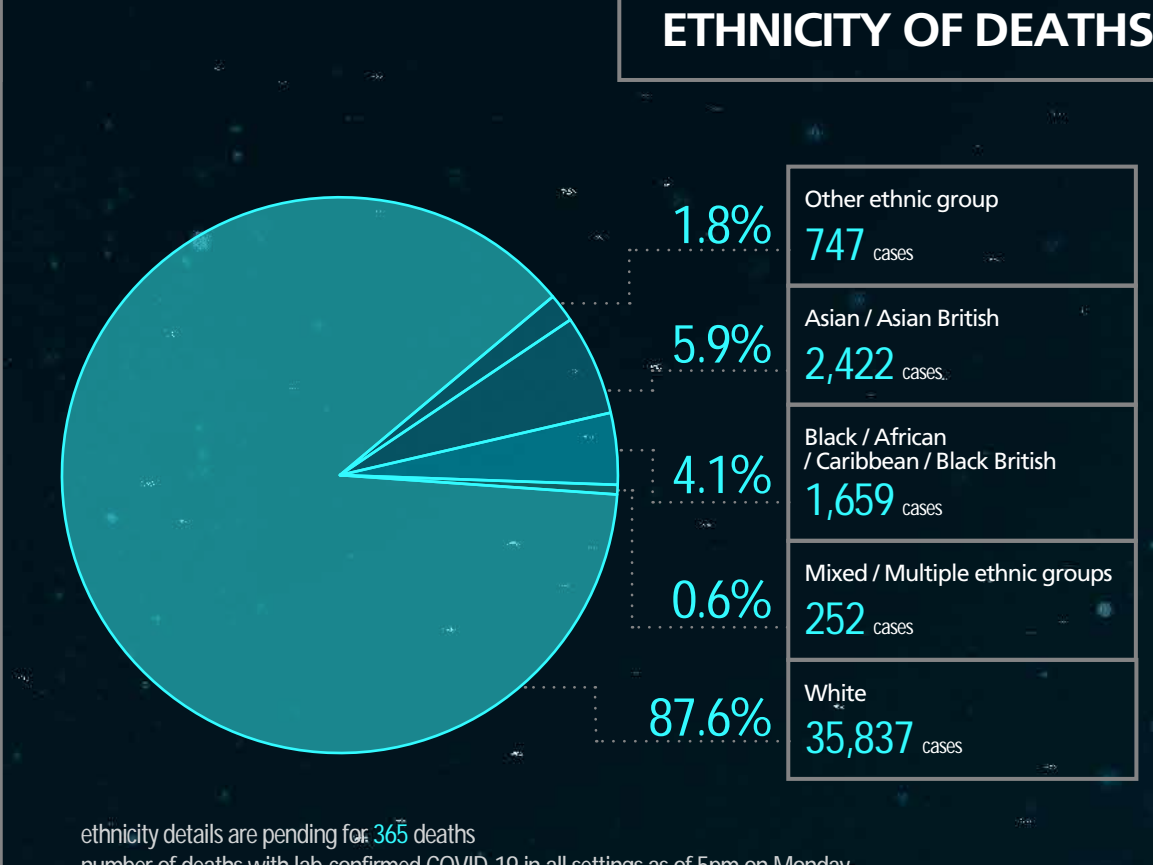
EPIDEMIC CURVE



ETHNICITY OF CONFIRMED CASES

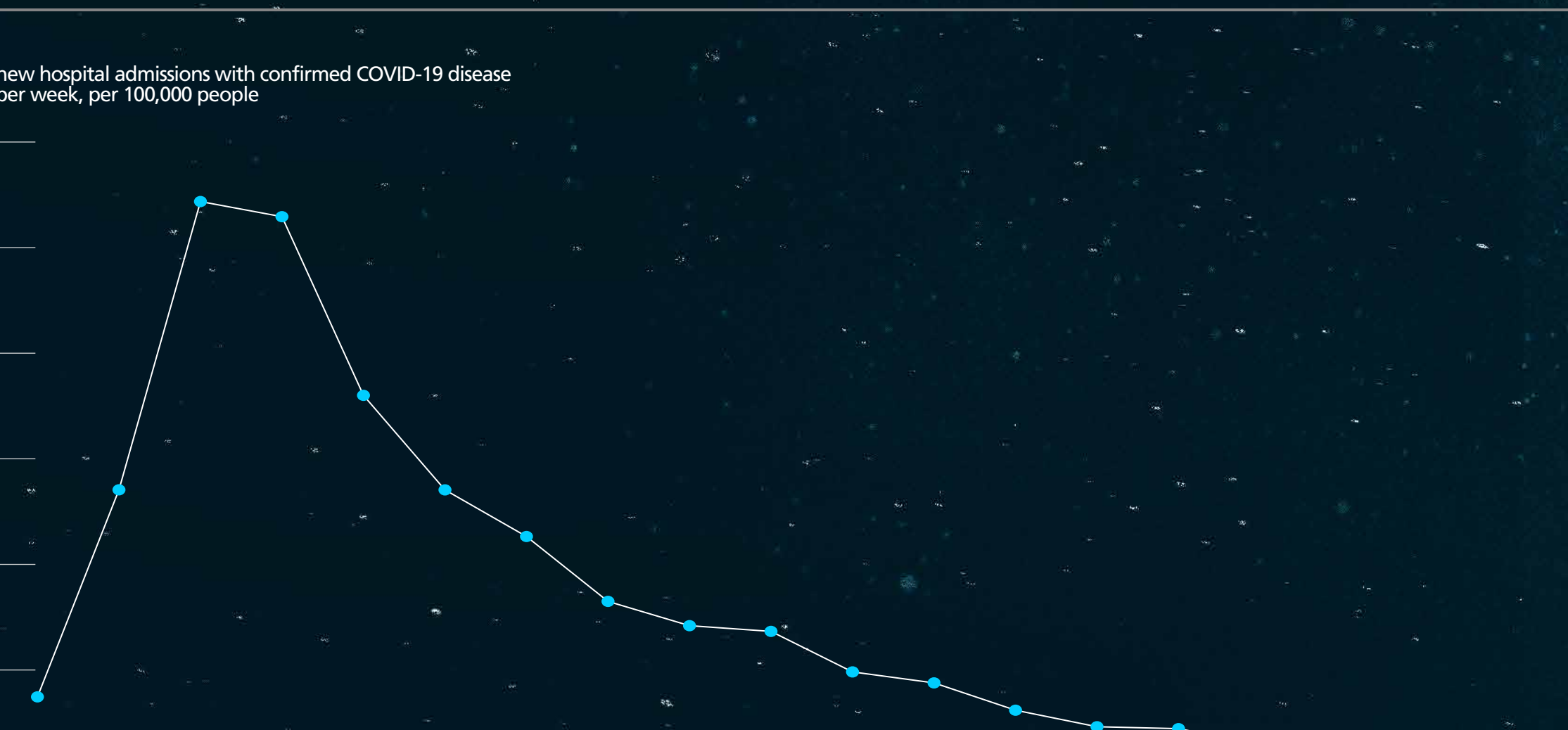


ETHNICITY OF DEATHS



16 March 2020 to 26 July 2020 in England

source: PHE Covid-19 Hospitalisations in England Surveillance System



further epidemiological data is available in the weekly surveillance report that accompanies this summary

STAY ALERT CONTROL THE VIRUS SAVE LIVES

GOV.UK/coronavirus
NHS.UK/coronavirus

