



Public Transport

This section looks at the use of public transport in Great Britain and related data about public transport from Transport Statistics Great Britain published in December 2011.

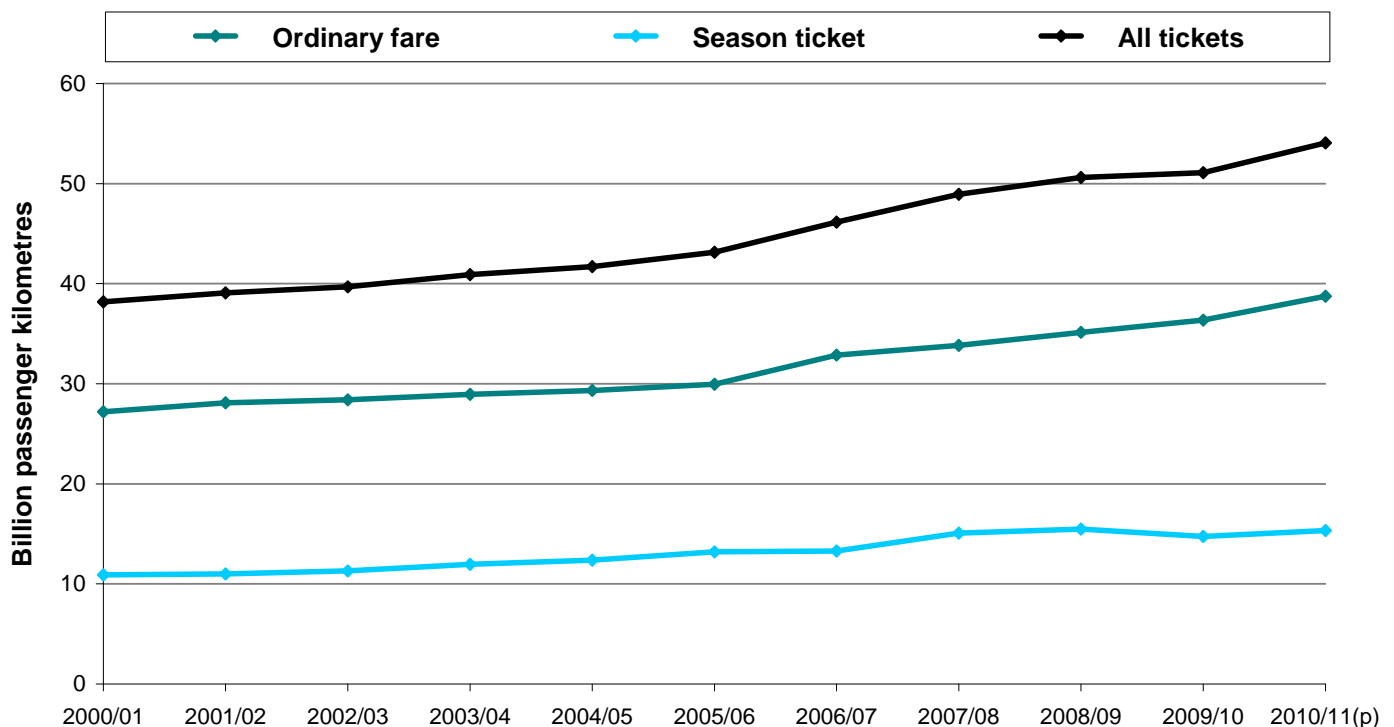
Important Note: Figures on bus support and revenue were updated in January 2012 to use final out-turn data for 2010/11.

Public Transport includes:

- National Rail
- The Channel Tunnel
- Underground systems
- Buses
- Light Rail and Tram systems

National Rail

Passenger kilometres on national railways, by ticket type: Great Britain, annual from 2000/01 ([Table RAI0103](#))



- Since privatisation (1994/95), the number of franchised journeys made by national rail has increased by 84 per cent, from 0.7 billion to 1.4 billion in 2010/11 (42 per cent since 2000/01). During this period the number of journeys has risen every year apart from a slight drop of 0.7 per cent between 2008/09 and 2009/10, which was likely a result of the recession. Between 2009/10 and 2010/11 the number of journeys rose again, by 7.6 per cent.

-
- Passenger kilometres travelled by national rail follow a similar trend to passenger journeys, and have increased by 88 per cent since 1994/95, from 29 billion to 54 billion passenger kilometres in 2010/11. The effects of the Hatfield crash in October 2000 briefly caused an interruption in the steady upward trend, but usage has increased again since then.
 - Punctuality and reliability are measured through the Public Performance Measure (PPM), which combines figures for punctuality and reliability into a single performance measure, measuring the proportion of trains that arrive at their destinations on time. In 2010/11, 90.8 per cent of all services arrived on time, which is a fall from the record high of 91.5 in 2009/10 but is higher than all previous years since records began in 1997/98. PPM was 79.1 per cent in 2000/01, a significant drop on the previous year. This was as a result of the Hatfield crash in October 2000, where long distance services were particularly affected. Since the Hatfield crash, PPM for all the sectors has been improving gradually.
 - National railways revenue for all franchised operators has increased by 94 per cent between 2000/01 and 2010/11, from £3.4 billion to £6.6 billion. To take into account inflation, the figures have also been adjusted to 2010/11 prices and these figures show that over the same period revenue has increased by 49 per cent.

Detailed statistics on national rail and the channel tunnel can be found on the [Rail Statistics web tables](#).

Underground Systems

- There were 1.1 billion passenger journeys on the London Underground and 13 million journeys on the Glasgow Subway in 2010/11.

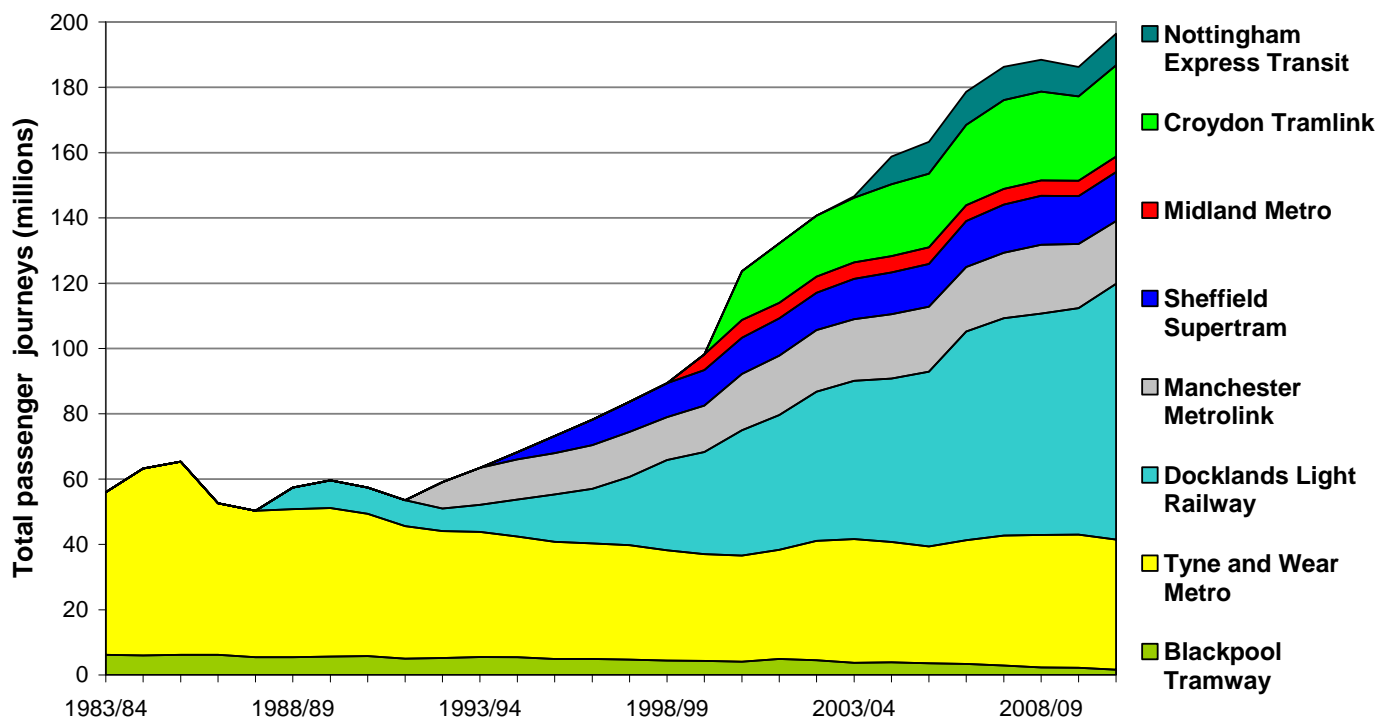
Detailed statistics (tables and charts) on Underground Systems can be found in tables [LRT9901](#) and [LRT9902](#).

Light Rail and Tram Systems

- Light rail and tram passenger journeys in England increased by 5.5 per cent between 2009/10 and 2010/11. In 2010/11, there were 196.5 million passenger journeys. This represents the highest number of passenger journeys to date.
- Light rail and tram vehicle miles in England increased by 1.8 per cent between 2009/10 and 2010/11. In 2010/11 there were 13.9 million vehicle miles.

Annual Share of Passenger Journeys: England, 1983/84 to 2010/11

(Table LRT0101)



- Light rail and tram passenger revenue in England increased by 9.0 per cent in real terms between 2009/10 and 2010/11.
- The number of light rail and tram passenger cars in England decreased by 8.9 per cent between 2009/10 and 2010/11. This was mainly due to a 57.5 per cent decrease in passenger cars on the Blackpool Tramway, associated with its ongoing redevelopment work.

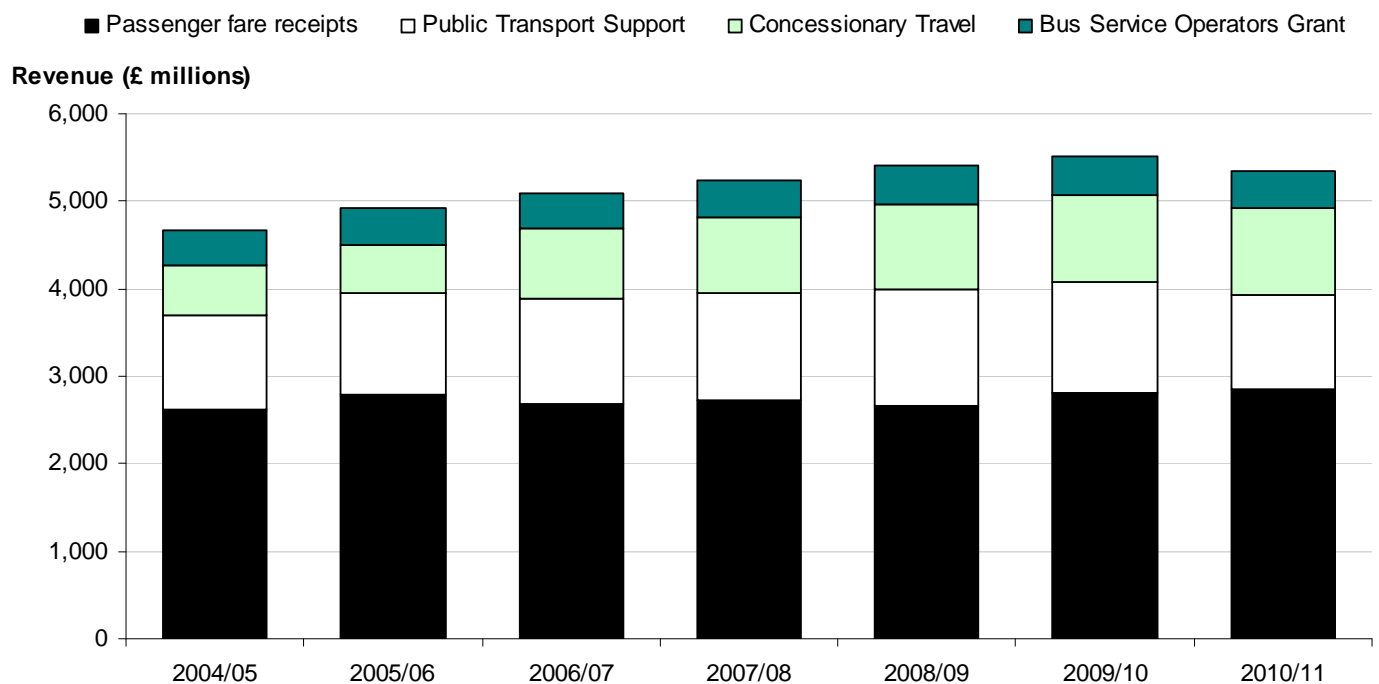
Detailed statistics (tables and charts) on Light Rail and Tram Systems can be found on the Light Rail Statistics web tables, table numbers [LRT0101](#) to [LRT0302](#).

Buses

- There were 4.6 billion bus passenger journeys in England in 2010/11. This is a 0.1 per cent increase from the 2009/10 level. Journeys in London increased by 1.4 per cent over this period and now account for nearly half (49 per cent) of all bus passenger journeys in England.
- Bus vehicle miles in England increased by 0.1 per cent between 2009/10 and 2010/11, with 23 per cent of mileage outside London on local authority supported services in 2010/11.
- Bus fares in England were at the same level in real terms in March 2011 as in March 2010.
- 53.5 per cent of operating revenue for local bus services came from passenger fare receipts in 2010/11 (50.9 per cent in 2009/10).
- Net public funding support for local bus services in England decreased by 7.3 per cent in real terms between 2009/10 and 2010/11.

Estimated operating revenue for local bus services by revenue type, England (at 2010/11 prices) 2004/05 to 2010/11 (in £ millions)

([Table BUS0501](#))



- In 2010/11, there were 84.5 thousand Public Service Vehicles (PSVs) in use by PSV operators in Great Britain, of which 46.3 thousand (55 per cent) were buses and the remainder minibuses and coaches. This represents a decrease of around 1,300 PSVs and 600 buses compared with the equivalent figures for 2009/10.

Detailed statistics (tables and charts) on buses can be found on the Bus Statistics web tables, table numbers [BUS0101 to BUS1003](#).

Background notes

Full guidance on the methods used to compile these statistics and their sources can be found in the [Public Transport Notes and Definitions](#).