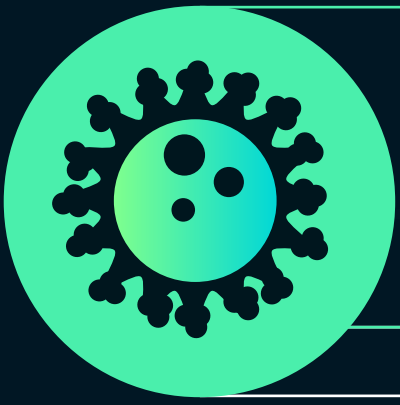


# Outbreaks in care homes in England

Coronavirus (COVID-19)

weekly data: 13 July 2020 to 19 July 2020

cumulative data: 09 March 2020 to 19 July 2020



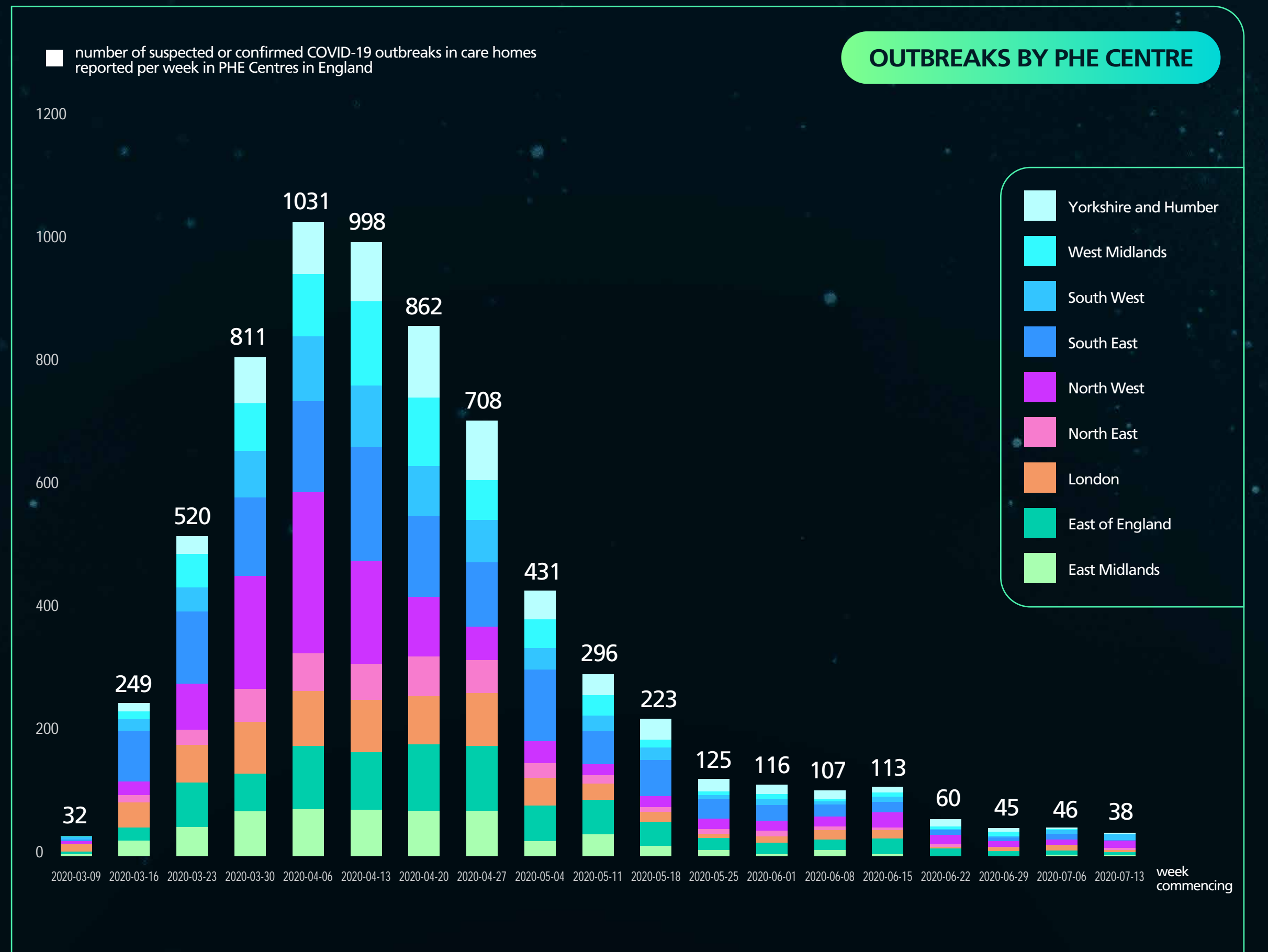
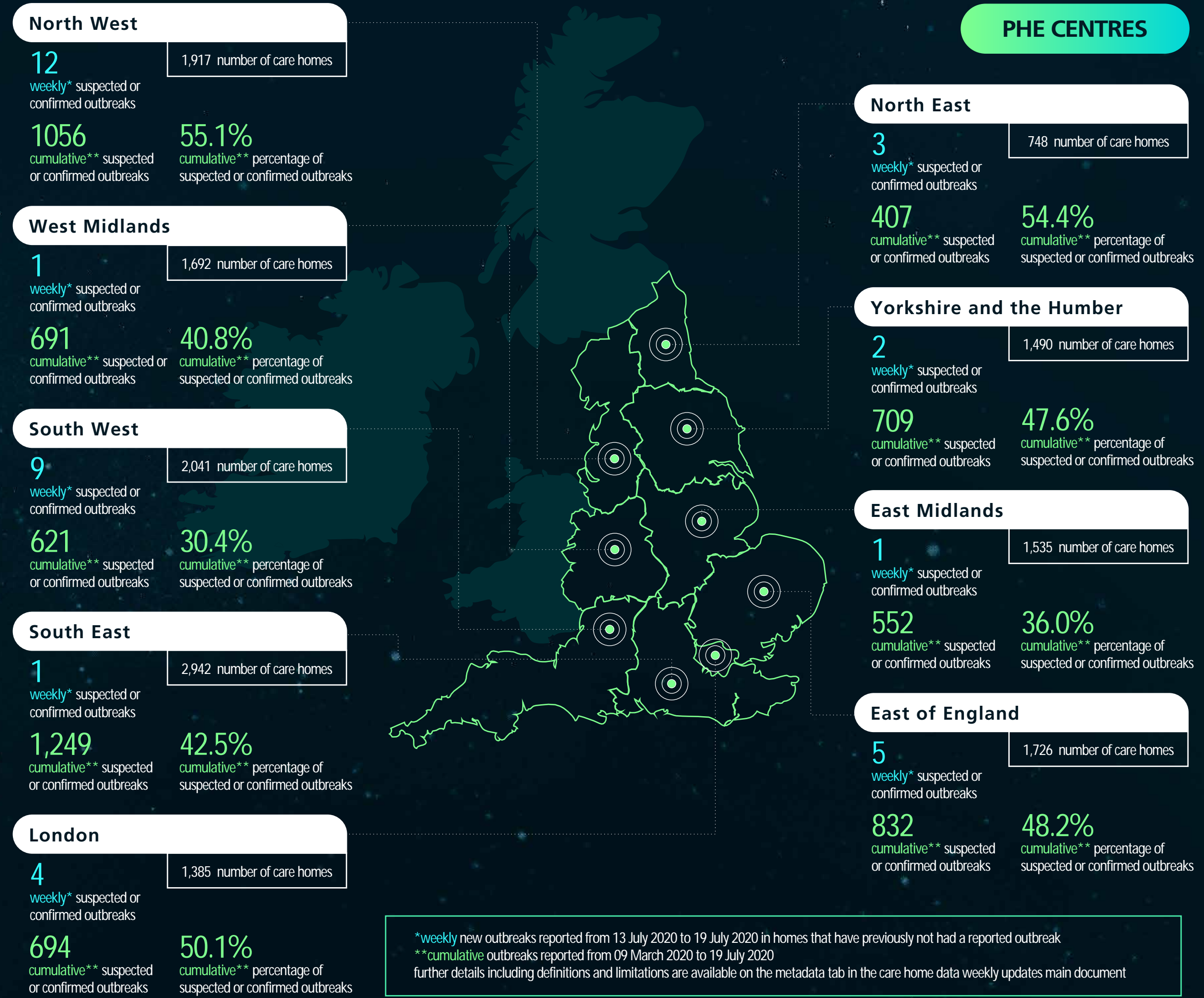
weekly\* suspected or confirmed COVID-19 outbreaks reported in care homes

**38**

number of care homes in England: 15,476

cumulative\* suspected or confirmed COVID-19 outbreaks reported in care homes

**6,811**



STAY ALERT CONTROL THE VIRUS SAVE LIVES