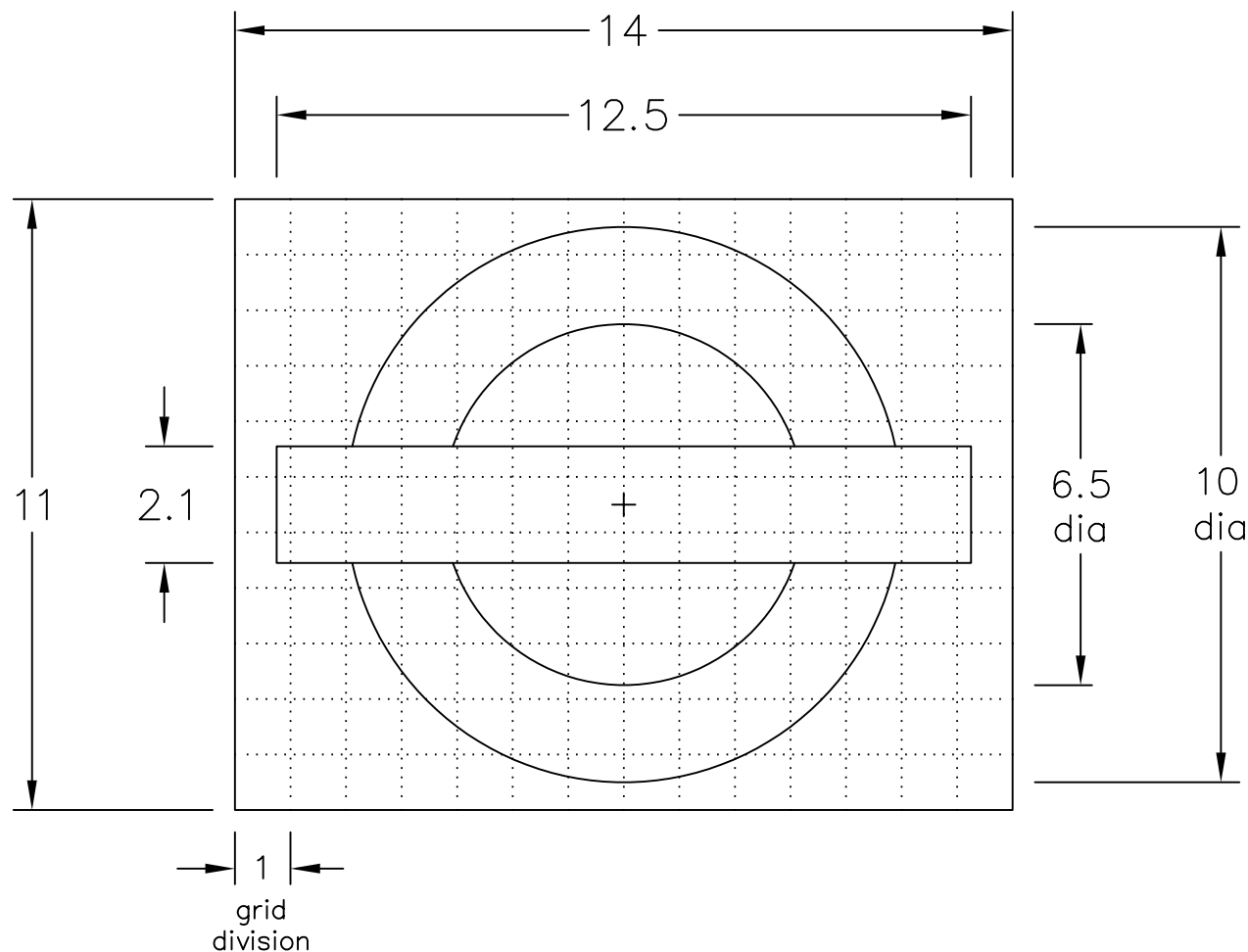


Drawing No.
S 39

© CROWN COPYRIGHT

- NOTES: 1. The grid does not form part of any sign to which the symbol is applied.
2. Dimensions are given in grid divisions (normally equal to 1/4 x-height).
3. COLOURS : In accordance with the requirements of Transport for London.

Background (tile) --- WHITE
 Roundel ----- RED
 Horizontal Bar ----- DARK BLUE
 (The white tile is used on dark background signs)



S39

Before using this drawing, confirm that it has not been superseded.

Department for
Transport

Title: Symbol
LONDON UNDERGROUND STATION

Issue: Date:
A: 17.2.94
B: 4.11.02
C:

Drawn by: S.P.
Approved by: R.M.

Dimensions:
ALL IN
GRID DIVISIONS

Drawing No.
S 39