

The weekly surveillance report in England

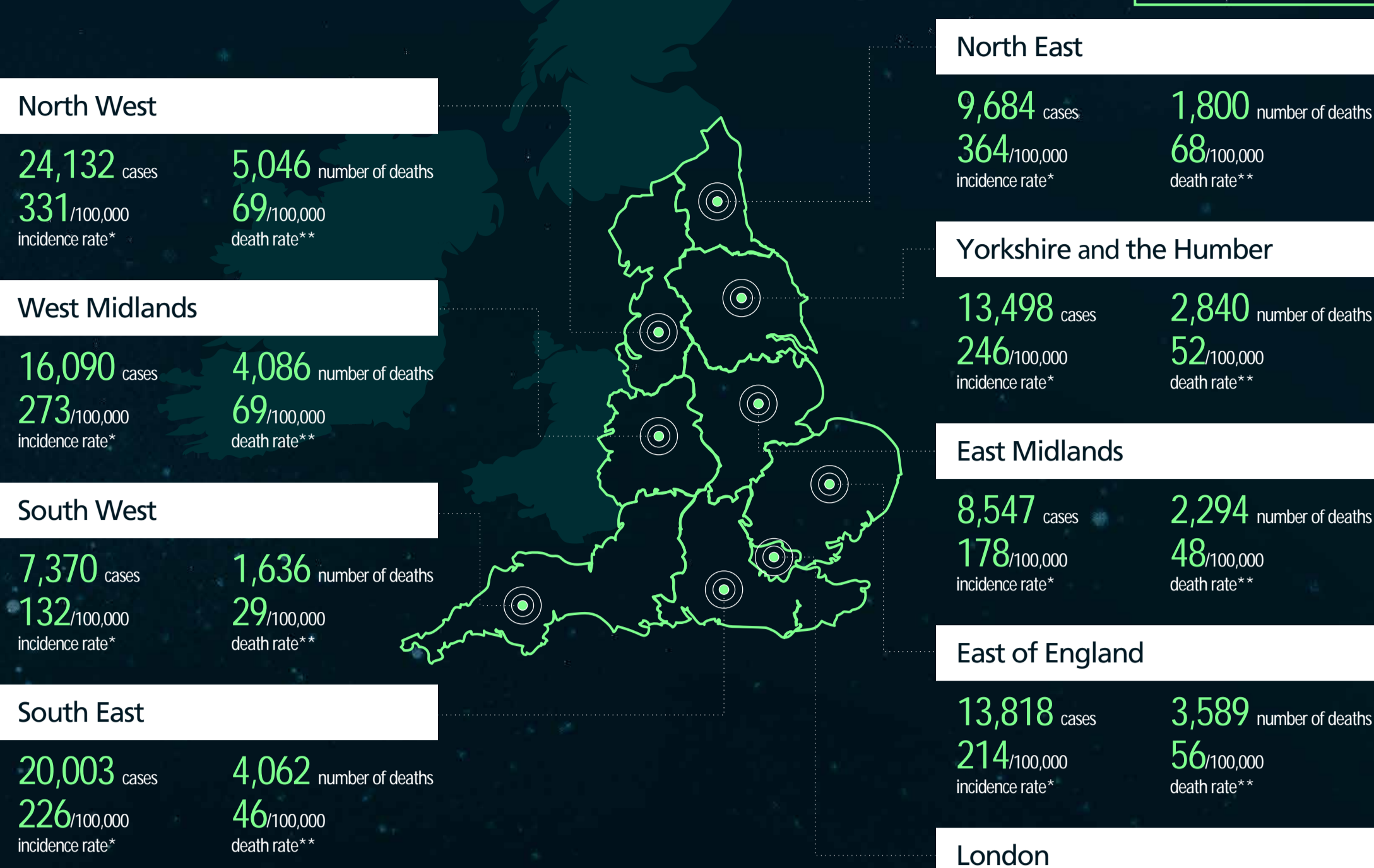
Coronavirus (COVID-19)

week: 14 May 2020 to 20 May 2020

cumulative data from:
30 January 2020 to 20 May 2020 in England

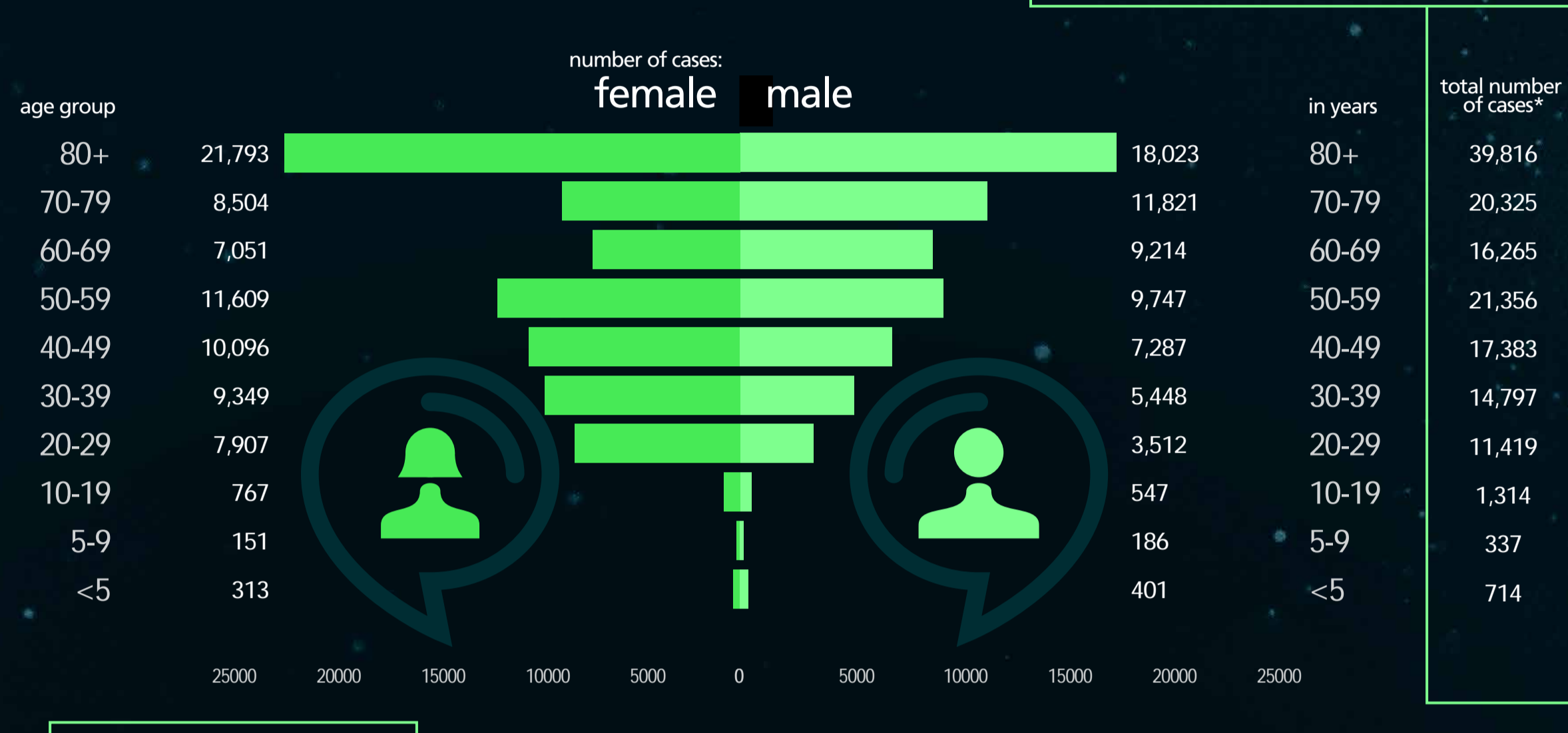


PHE CENTRE MAP



information on residential location is pending for 6,087 cases and 384 deaths
number of deaths with lab-confirmed COVID-19 in all settings as of 5pm on Tuesday
relates only to tests performed under Pillar 1 of the UK Government's COVID-19 testing programme
further information is available from www.gov.uk
* incidence rate - the cumulative number of confirmed cases of COVID-19 since 30 January 2020 divided by the total population of each PHE Centre multiplied by 100,000
** death rate - the total number of people who have died in England and had tested positive for COVID-19 since 30 January 2020 divided by the total population of each PHE Centre multiplied by 100,000

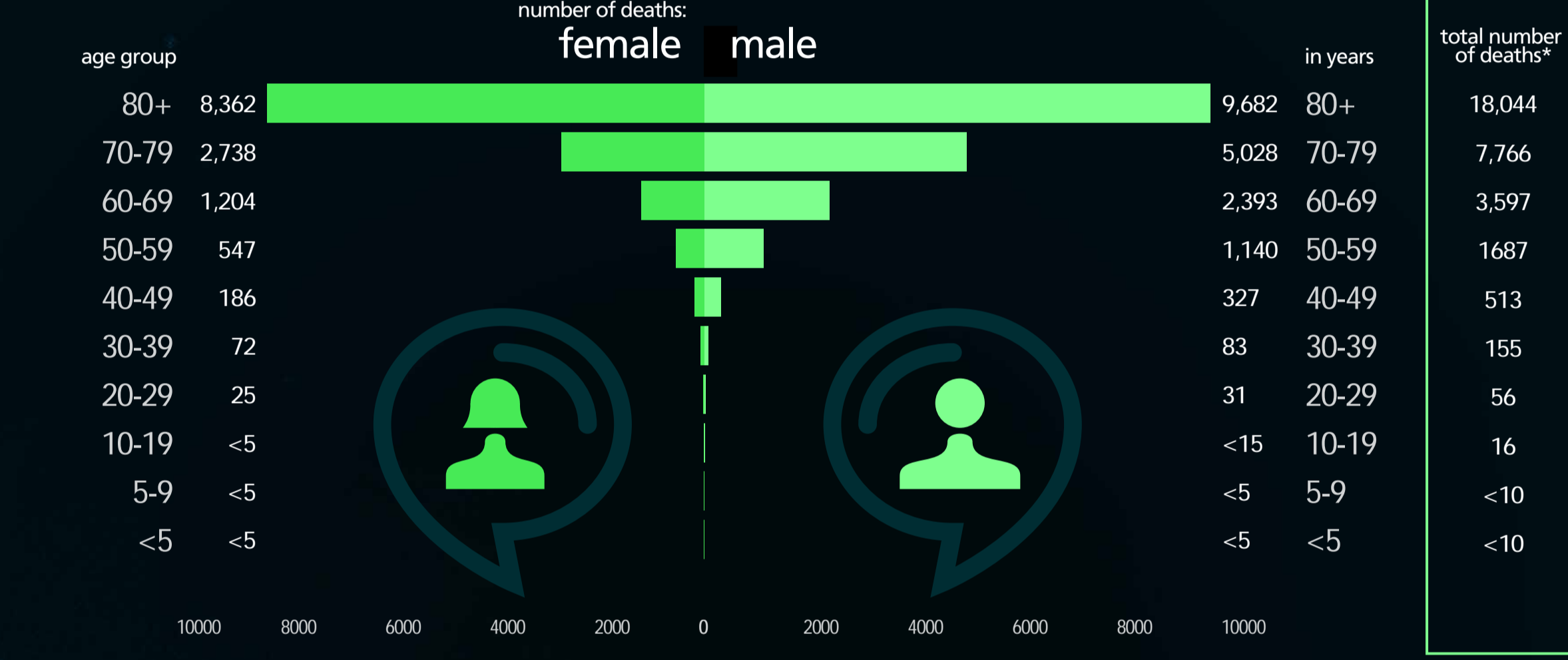
POPULATION PYRAMID OF CASES



62 years median age**

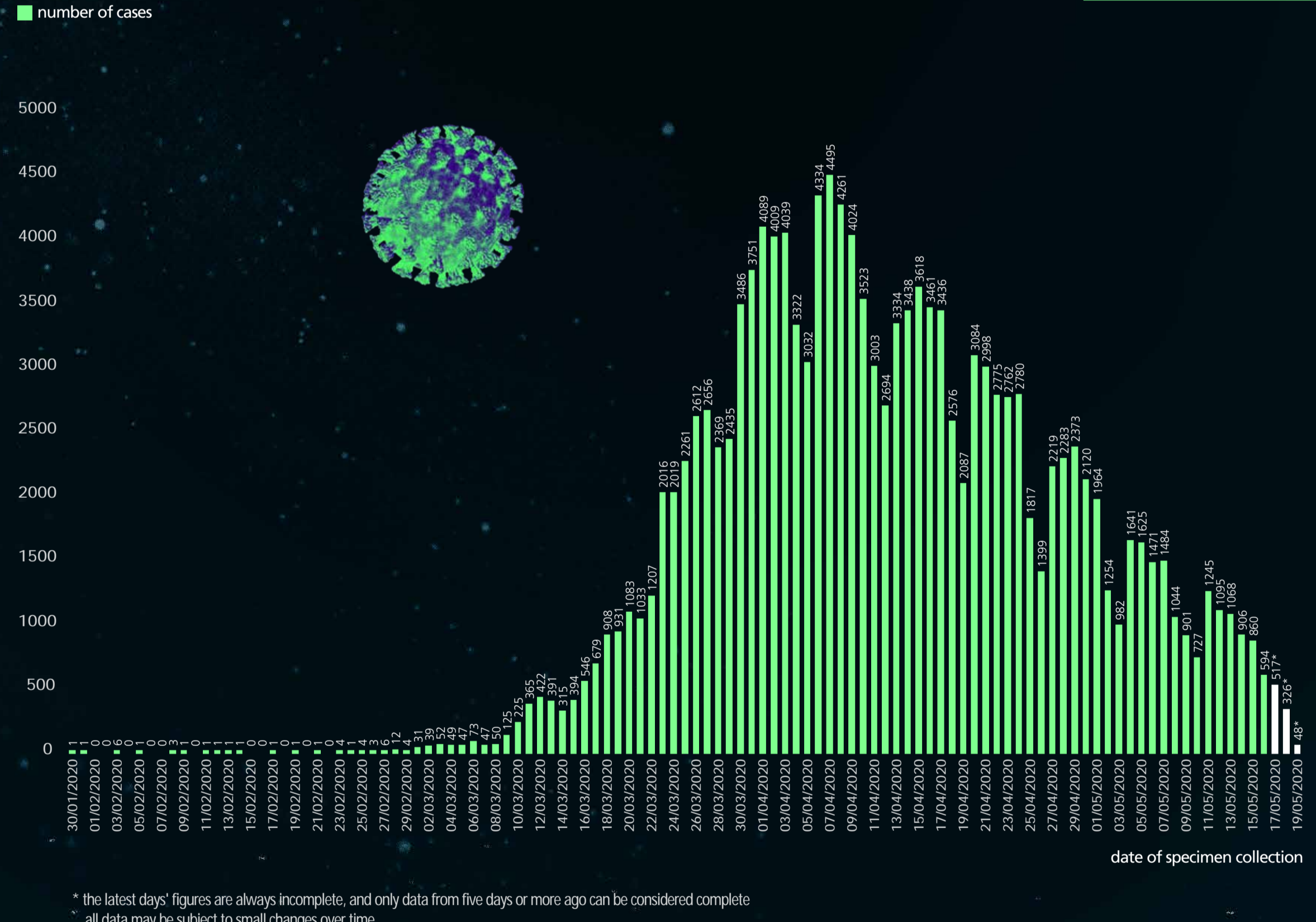
* excludes 2,082 cases for whom age and/or sex details are currently unavailable
** median age is the middle value in a range - half of the cases are younger than this age and half are older

POPULATION PYRAMID OF DEATHS

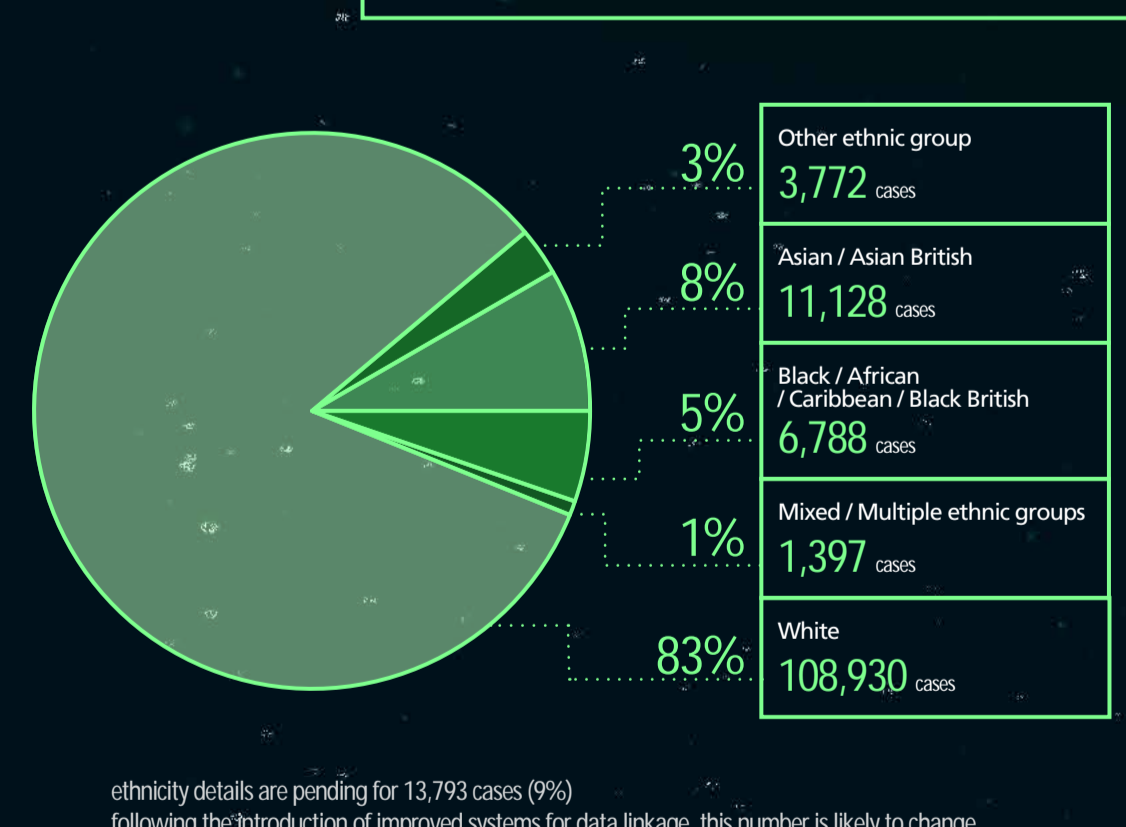


* number of deaths with lab-confirmed COVID-19 in all settings as of 5pm on Tuesday

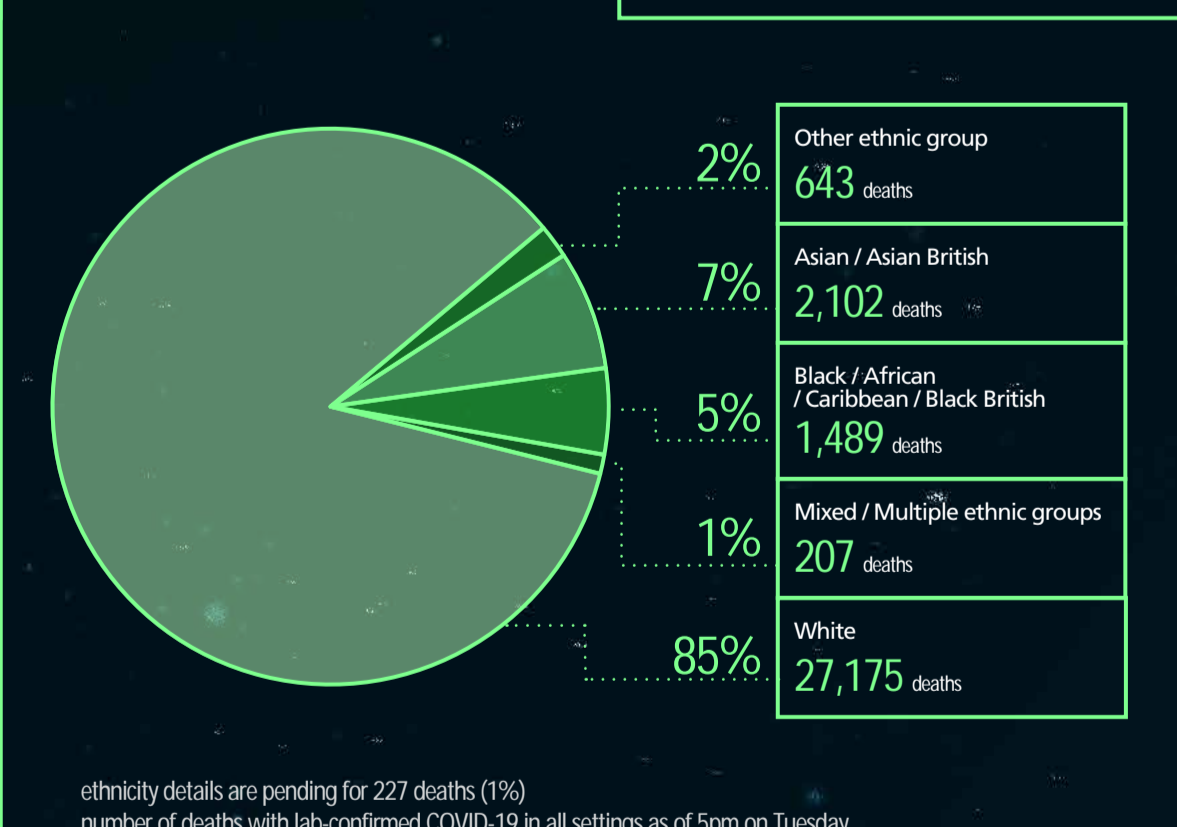
EPIDEMIC CURVE



ETHNICITY OF CONFIRMED CASES



ETHNICITY OF DEATHS



data from:
15 March 2020 to 20 May 2020 in England

source: PHE Covid-19 Hospitalisations in England Surveillance System

