

# COVID Alert Levels

Level	Description	Action
5	As level 4 and there is a material risk of healthcare services being overwhelmed	Social distancing measures increase from today's level
4	A COVID-19 epidemic is in general circulation; transmission is high or rising exponentially	Current social distancing measures and restrictions
3	A COVID-19 epidemic is in general circulation	Gradual relaxing of restrictions and social distancing measures
2	COVID-19 is present in the UK, but the number of cases and transmission is low	No or minimal social distancing measures; enhanced testing, tracing, monitoring and screening
1	COVID-19 is not known to be present in the UK	Routine international monitoring

STAY ALERT ▶ CONTROL THE VIRUS ▶ SAVE LIVES

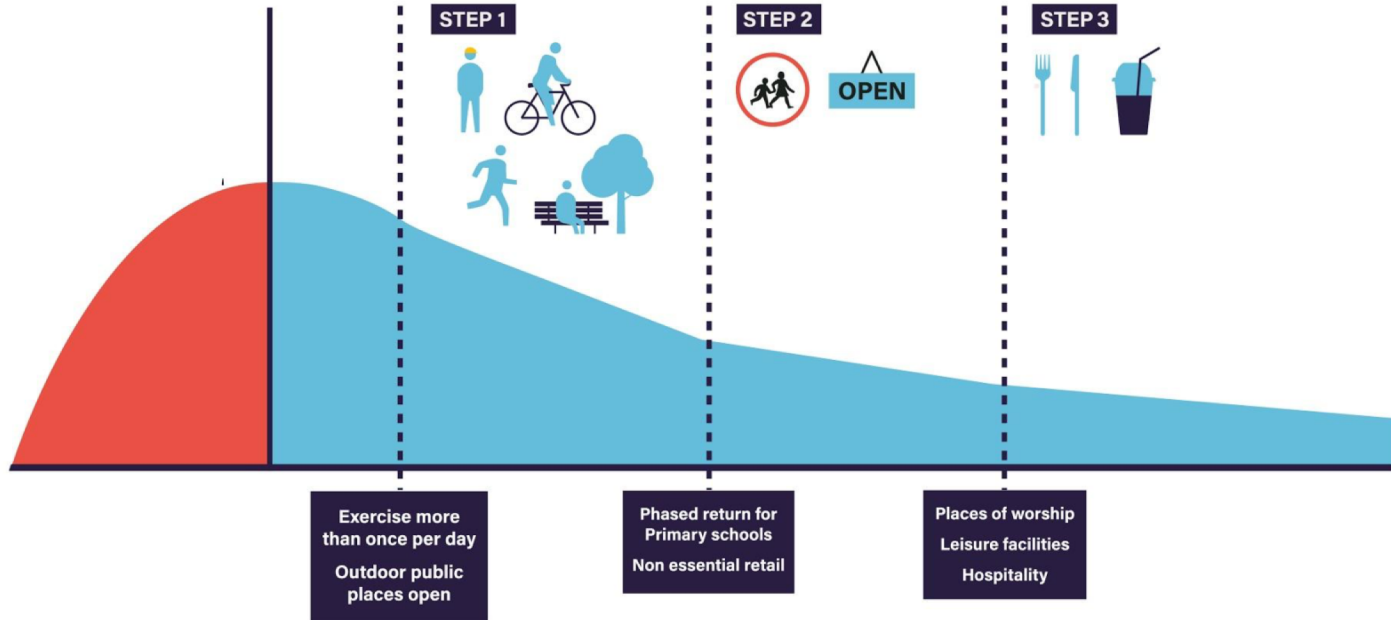


HM Government

# Steps of adjustment to current social distancing measures

R more than 1  
caseload increasing

R less than 1  
caseload decreasing



**STAY ALERT ▶ CONTROL THE VIRUS ▶ SAVE LIVES**

# We can help control the virus if we all stay alert



Stay at home as much as possible



If you can, wear a face covering in enclosed spaces



Work from home if you can



Keep your distance if you go out (2m where possible)



Go to work if you can't work from home



Wash your hands regularly



Limit contact with other people



Do not leave home if you or anyone in your household has symptoms

**STAY ALERT › CONTROL THE VIRUS › SAVE LIVES**

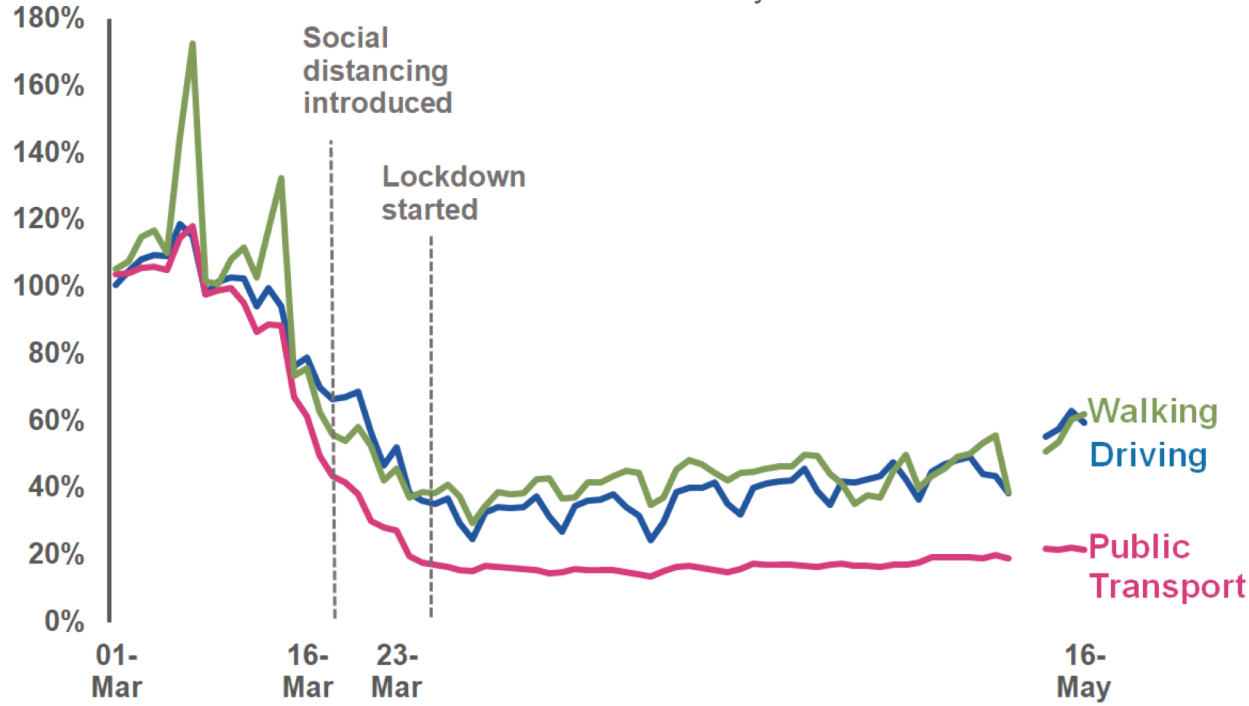


HM Government

# Mobility (UK)

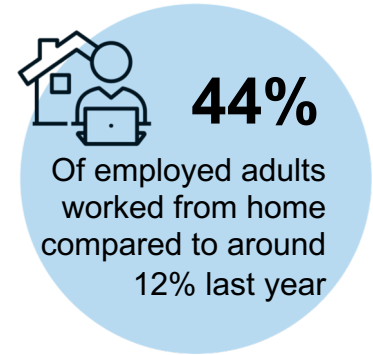
## Apple maps directions requests data

01 March to 16 May 2020



## Opinions and lifestyle survey

24 April to 3 May 2020



Source: Apple mobility data. Opinions and Lifestyle Survey, Office for National Statistics. Data not available for 11/12 May. Further details on data sources can be found here: <https://www.gov.uk/government/collections/slides-and-datasets-to-accompany-coronavirus-press-conferences>

**STAY ALERT ▶ CONTROL THE VIRUS ▶ SAVE LIVES**

# Testing and new cases (UK)



## Testing

Some people are tested more than once.

**100,678** tests as of 18 May

**2,682,716** tests in total

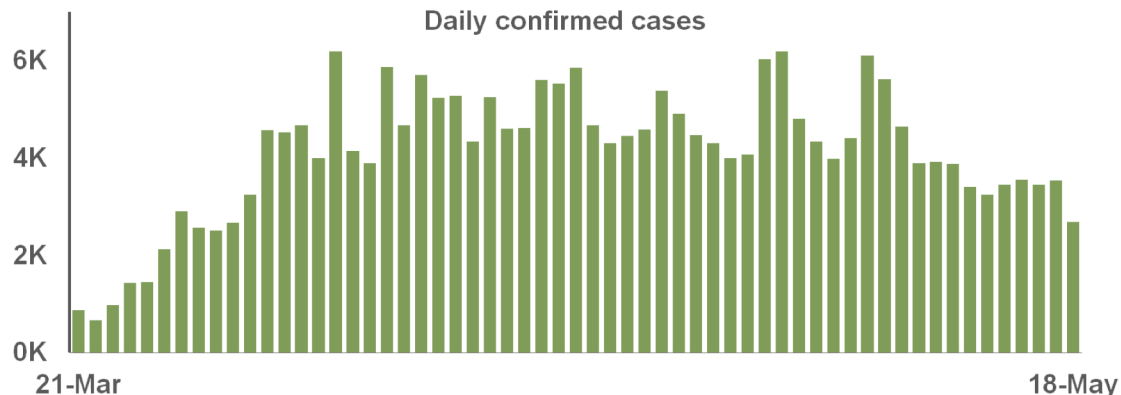
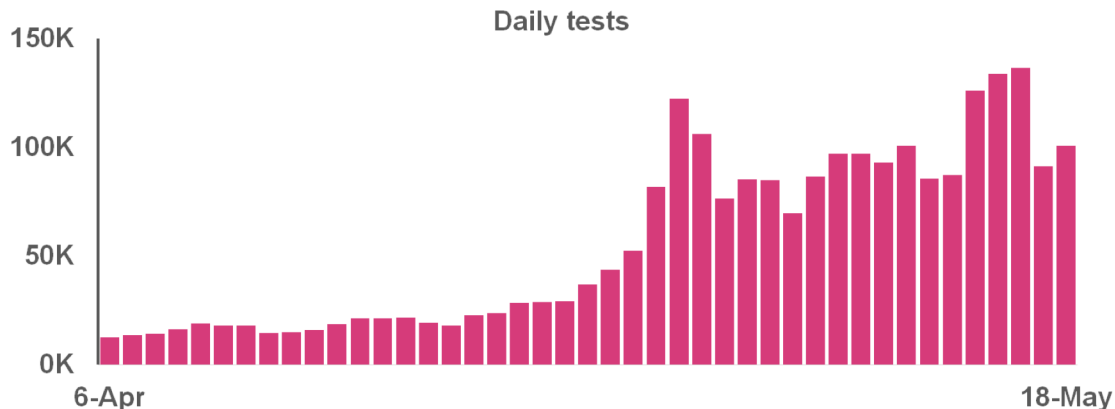


## Confirmed cases

Only includes cases tested positive. There are more cases than confirmed here.

**2,684** cases confirmed as of 18 May

**246,406** cases confirmed in total



Source: NHS England and devolved administrations.  
Further details on data sources can be found here:  
<https://www.gov.uk/government/collections/slides-and-datasets-to-accompany-coronavirus-press-conferences>



# Data from Hospitals



**678**

**Estimated admissions with COVID-19 (England)**

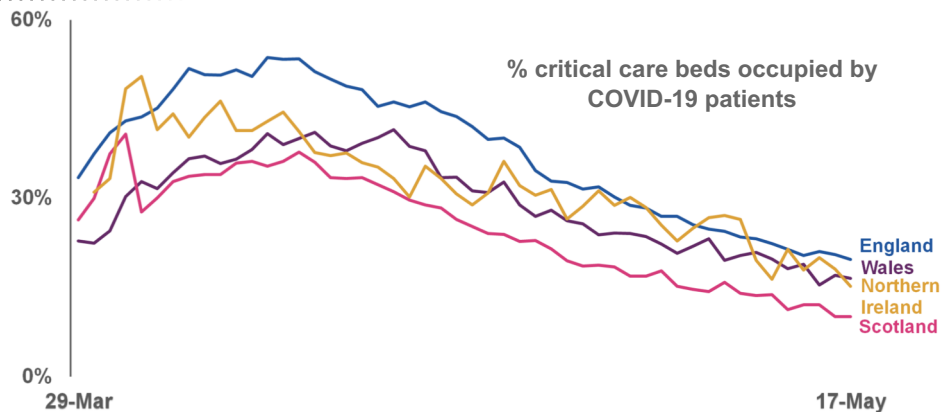
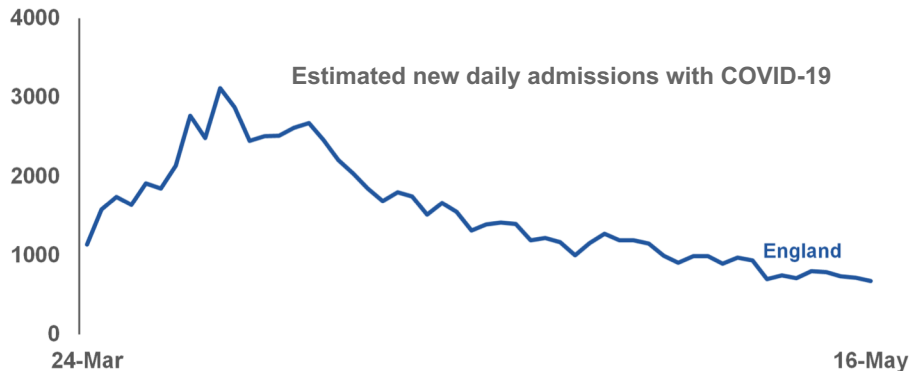
on 16 May  
Down from 701 on 9 May



**19%**

**Of critical care beds occupied with COVID-19 patients (UK)**

on 17 May  
Down from 23% on 10 May

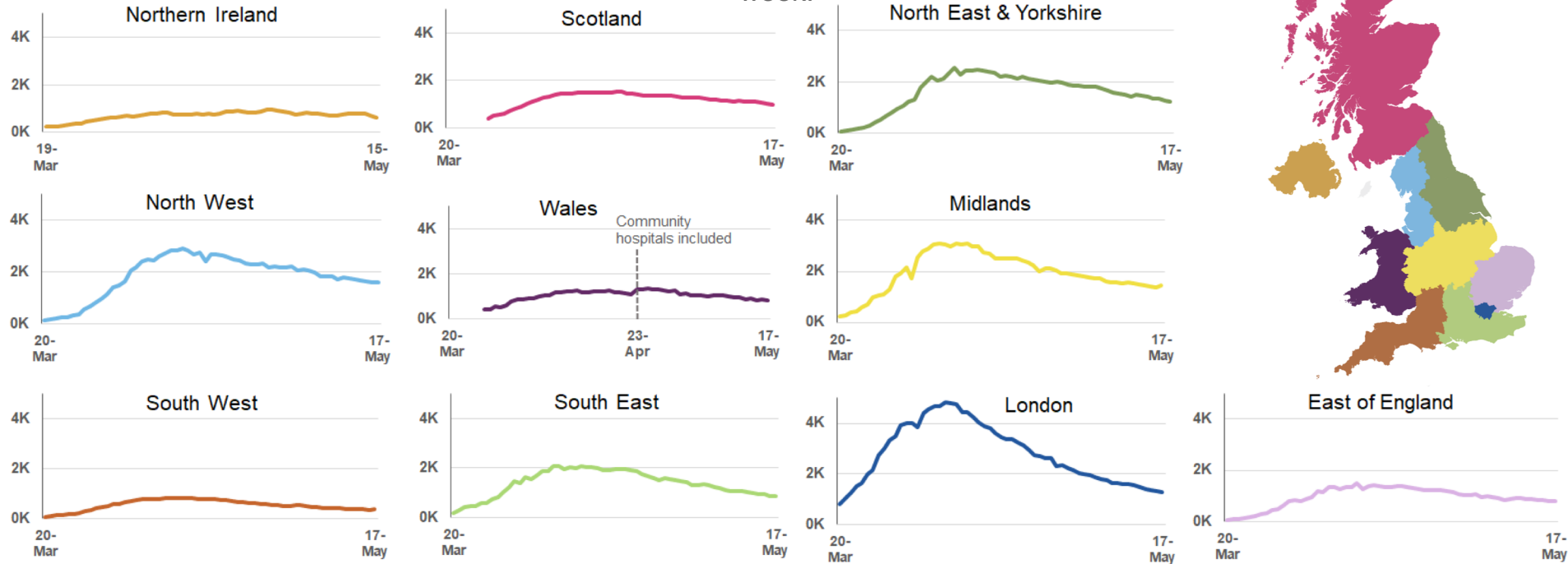


Source: NHS England and devolved administrations.  
Further details on data sources can be found here:  
<https://www.gov.uk/government/collections/slides-and-datasets-to-accompany-coronavirus-press-conferences>

**STAY ALERT ▶ CONTROL THE VIRUS ▶ SAVE LIVES**

# People in Hospital with COVID-19 (UK)

9,408 people are in hospital with COVID-19 in Great Britain, down from 10,762 this time last week.



Due to technical difficulties hospitalisation data for 16 May is missing from the Northern Ireland return.

Source: NHS England and devolved administrations.  
Further details on data sources can be found here:  
<https://www.gov.uk/government/collections/slides-and-datasets-to-accompany-coronavirus-press-conferences>



# Daily COVID-19 deaths confirmed with a positive test (UK)

The numbers presented here from the Department for Health and Social Care relate to deaths where COVID-19 was confirmed with a positive test.



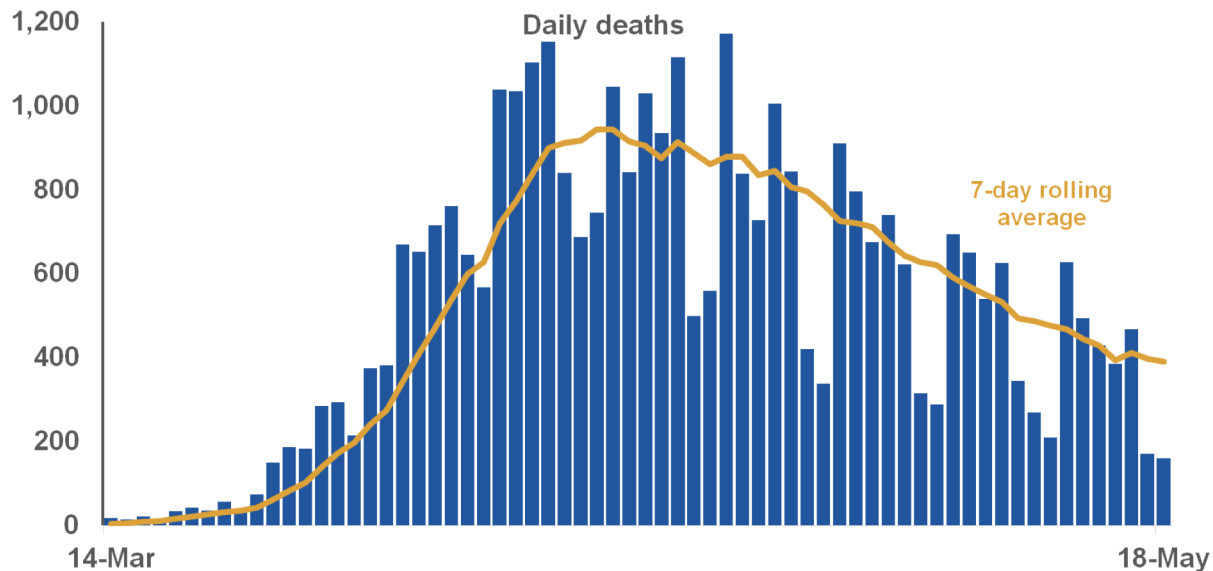
On 18 May DHSC reported

**160**

Daily COVID-19 deaths confirmed with a positive test

**34,796**

Total COVID-19 deaths confirmed with a positive test



Weekly registered deaths from the Office for National Statistics include cases where COVID-19 is mentioned on the death certificate but was not confirmed with a test. On 1st May, ONS reported 36,591 cumulative registered deaths from COVID-19. This was 9,082 more than the DHSC figure for the same date.

Source: DHSC, sourced from NHSE, PHE, devolved administrations. Further details on data sources can be found here: <https://www.gov.uk/government/collections/slides-and-datasets-to-accompany-coronavirus-press-conferences>





# Annex: Statistical notes

## Mobility

**Apple directions requests:** The insights are drawn from changes from a relative volume of directions requests per country/region or city compared to a baseline volume on January 13th, 2020. Data were not available for the 11/12 May for any location. This data only includes journeys searched for using Apple Maps, and therefore does not include users searching through alternative journey planners. In many countries relative volume has increased since January 13th, [consistent with normal, seasonal usage of Apple Maps](#). Insights are calculated based on data from a subset of users. As with all samples, this may or may not represent the exact behavior of a wider population and the results should be interpreted with caution.

**Opinion and lifestyle survey:** Information on the survey can be found [here](#). Employed adults are those employed or self-employed; doing casual work for payment; or doing unpaid/voluntary work in the previous week. The 2019 estimate of people working from home is taken from the Annual Population Survey, and is not directly comparable to the Opinions and Lifestyle survey estimate.

## Testing and new cases (UK)

**Tests:** The [number of tests](#) includes; (i) tests processed through our labs, and (ii) tests sent to individuals at home or to satellite testing locations.

**Cases:** [Cases](#) are reported when lab tests are completed. This may be a few days after initial testing. Chart date corresponds to the date tests were reported as of the 24 hours before 9am that day. Only includes cases tested positive. There are more cases than confirmed here.

## Data from hospitals

**Estimated daily admissions with COVID-19 (England):** England data captures people admitted to hospital who already had a confirmed COVID-19 status at point of admission, and adds those who tested positive in the previous 24 hours whilst in hospital. Inpatients diagnosed with COVID-19 after admission are assumed to have been admitted on the day prior to their diagnosis.

**Critical care beds (UK):** Different health systems collect this data differently. In England critical care beds count high dependency units / intensive therapy units beds as critical care beds and this includes the surge capacity which has been introduced in recent weeks. In Wales critical care beds are taken to be invasive ventilation beds including new surge capacity. In Scotland critical care beds include ICU beds and additional surge capacity. In Northern Ireland critical care beds includes all ICU beds.

## People in hospital with COVID-19 (UK)

Community hospitals are included in figures for Wales from 23 April onwards. England and Scottish data includes 'confirmed' cases, Northern Ireland and Welsh data includes 'confirmed' and 'suspected' cases. Due to the way Northern Ireland report, the UK figure is calculated by taking the most recent day for Great Britain plus the previous day for Northern Ireland. National data may not be directly comparable as data about COVID-19 patients in hospitals is collected differently across nations. Due to technical difficulties hospitalisation data for 16 May is missing from the Northern Ireland return.

## Daily COVID-19 deaths confirmed with a positive test (UK)

Figures on [deaths](#) relate to those who have tested positive for COVID-19. The 7-day rolling average (mean) of daily deaths is plotted on the last day of each seven day period.