



Department
for Transport

Guidance for NaPTAN Data Managers



Moving Britain Ahead

Guidance for local authority NaPTAN data managers (updated Oct 2016)

Contents

1. Data & process	4
2. NaPTAN Data Management	4
3. Uploading Data	4
4. Downloading Data	4
5. Viewing Data	4
6. Accessing NaPTAN Data	4
7. Licence to use NaPTAN data	4
8. Quick Guide to NaPTAN stop point naming	5
9. List of preferred indicator values (input not case sensitive)	7
10. SMS prefixes	10
11. NaPTAN – UPLOADING DATA	22
12. Introduction	22
13. What to Upload	22
14. Problems	22
15. Annex A – NaPTAN CSV tables	23
16. Stops table	24
17. AlternativeDescriptor Table	25
18. StopLocalities Table	26
19. StopAvailabilities Table	27
20. Hail & Ride CSV Table	27
21. Flexible CSV Table	28
22. StopAreas (Groups Table)	28
23. StopsInStopArea (StopsInGroups) Table	29
24. AreaHierarchy (Groups In Group) Table	29





Department
for Transport

Data & process

NaPTAN Data Management

NaPTAN data for each administrative area is created and maintained by local authorities, using the data supplier's preferred editing tool, and then uploaded to [the NaPTAN data management website](#), which requires a user account and has its own [user guide](#). DfT processes and publishes NaPTAN data in XML, CSV and GTFS formats.

Uploading Data

NaPTAN data can be uploaded in XML format, zipped or unzipped.

Downloading Data

Published data can be downloaded from <http://naptan.app.dft.gov.uk/datarequest/help> or from the data management website's "Download" page. FTP access is available on request from naptan.nptg@dft.gsi.gov.uk.

Viewing Data

NaPTAN data can be viewed graphically online using [the ITO service](#). For access credentials, please contact naptan.nptg@dft.gsi.gov.uk.

Accessing NaPTAN Data

Anyone wishing to upload NaPTAN data must first self-register on the [data management website](#). Registered users may request FTP upload access.

Licence to use NaPTAN data

NaPTAN Data is free to use under the Open Government Licence.



Quick Guide to NaPTAN stop point naming

This Quick Guide should be used in conjunction with [A simple guide to the key features of NaPTAN](#) and [the NaPTAN Schema Guide](#).

NaPTAN 2 Field	Content	Notes
	See the Simple Guide for information on permitted characters	
AtcoCode	The first three numbers denote the authority responsible for the stop. The fourth character is a 0 (zero). The remaining characters to a maximum of 8 are alpha-numeric determined locally.	
NaptanCode	A unique seven or eight character code suitable for displaying on stops and in public facing systems. The code is suitable for use in SMS and other delivery channels. Must follow detailed rules.	See NaPTAN Schema Guide for detailed rules
CommonName	The aim is to have a unique name for an obvious group of stops within a locality. <u>Acceptable</u> : nearby landmark, nearby side street, the street on which the stop is located (for very short streets only where there is only one group of stops) <u>Unacceptable</u> : a composite of two street names or a street name and a landmark	The 'obvious group of stops' is a StopArea. The Simple Guide provides information on how StopAreas are constructed. When combined with the Indicator, the stop name should be one that the public would recognise.
Landmark	<i>Optional field. See Simple Guide for details of how and when this field is used.</i>	Is a candidate for use as CommonName
Street	The street on which the stop is located.	
Crossing	<i>Optional field. See Simple Guide for details of how and when this field is used.</i>	Is a candidate for use as CommonName
Indicator	A very short way of distinguishing between two or more stops that have the same CommonName. <u>Acceptable</u> : o/s [outside], opp [opposite], adj [adjacent], Bay 1, stance B, stop 5. <u>Unacceptable</u> : anything which cannot be read as qualifier of the CommonName, lengthy descriptions (always keep as short as possible) See the list of Preferred Indicators below for complete list of acceptable values	The test that should be applied is whether or not the Indicator works well with the CommonName e.g. Post Office, o/s War Memorial, stop 5 High Street, o/s 6
Bearing	The direction in which the vehicle is pointing when it is stopped at the StopPoint. <u>Acceptable</u> : N, NE, E, SE, S, SW, W, NW. <u>Unacceptable</u> : NNE, SSW, south west.	
NptgLocalityCode	The code of the lowest level Locality in which the stop is located.	This code is associated with the locality name and other locality relationships such as Parent when the data is uploaded.



Department for Transport

Town Suburb Locality Centre	<i>Optional fields. See Simple Guide for details of how and when these fields are used.</i>	Leave unused unless there is a local requirement for data in these fields
Easting and Northing	Each stop must be geo-coded to 1m precision using Ordnance Survey all numeric grid references.	Longitude and Latitude are populated automatically when the data is processed.
StopType BusStopType TimingStatus	The available values and their meaning should be obtained from the Simple Guide.	



List of preferred indicator values (input not case sensitive)

First Issued 30 March 2010;

Amended 3 December 2010 (addition of "Inner Circle" and "Outer Circle")

Amended 22 December 2010 (addition of "Quay" and "Berth")

Amended 15 February 2012 (addition of "Gate" and corrected capitalisation)

Amended 5 March 2012 (clarification of normalisation of initial letters)

Amended 22 July 2013 (addition of taxi rank and related provisions)

Those in green and in brackets show the normalisation values – other values are NOT to be normalised except in terms of their initial letters which should always be in upper or lower case as shown in this list.

Those in red should appear before the CommonName – all others should appear after the CommonName.

"opposite" [> "opp"]

"opp"

"outside" [> "o/s"]

"o/s"

"adjacent" [> "adj"]

"adj"

"near" [> "nr"]

"nr"

"behind"

"inside"

"by"

"in"

"at"

"on"

"before"

"just before"

"after"

"just after"

"corner of"

"corner"

"cnr"

"DRT"

"Stop"

"Stance"

"Stand"

"Bay"



Department for Transport

"Platform"
"entrance"
"main entrance"
"side entrance"
"front entrance"
"back entrance"
"rear entrance"
"north entrance"
"east entrance"
"south entrance"
"west entrance"
"north east entrance" [> "NE entrance"]
"NE entrance"
"north west entrance" [> "NW entrance"]
"NW entrance"
"south east entrance" [> "SE entrance"]
"SE entrance"
"south west entrance" [> "SW entrance"]
"SW entrance"
"N entrance"
"E entrance"
"S entrance"
"W entrance"
"arrivals"
"departures"
"Northbound" [> "N-bound"]
"N-bound"
"Southbound" [> "S-bound"]
"S-bound"
"Eastbound" [> "E-bound"]
"E-bound"
"Westbound" [> "W-bound"]
"W-bound"
"NE-bound"
"NW-bound"
"SW-bound"
"SE-bound"
"N bound" [> "N-bound"]
"E bound" [> "E-bound"]
"S bound" [> "S-bound"]
"W bound" [> "W-bound"]
"NE bound" [> "NE-bound"]
"SE bound" [> "SE-bound"]
"SW bound" [> "SW-bound"]
"NW bound" [> "NW-bound"]
"Inner Circle"
"Outer Circle"
"Quay"
"Berth"



Department for Transport

“Gate”

“taxi rank” (with permitted prefixes of “main”, “north”, “east”, “south”, “west” if required)

The words “Stop”, “Stand”, “Stance”, “Bay”, “Platform”, “entrance”, “Quay”, “Berth”, “Gate”, “taxi rank” can be followed by an alphanumeric string to allow for Stop codes e.g. A, 1, A1, 1A, 23, FG, AB27, etc ... with the numeric part limited to one or two digits and the alpha part to one or two characters either before or after the numeric – all in an unbroken string (of up to 4 characters). If the Indicator is just one of these alphanumeric strings of up to four characters, then add the word “Stop “ in front of them, except for the words “at”, “by”, “in”, “nr” or “on” which are valid indicator values in their own right.

Words which indicate a relationship (nr, opp, o/s, adj, at etc) can be followed by an alphanumeric string to allow for house numbers (e.g. opp 23, o/s 76a). In this case the numeric component should permit values to 9999, with or without a single following alpha character.

Stops which have an indicator in NaPTAN which does not match one of the preferred values (including those which do not have an indicator where one is required) will have a normalised indicator created based on the value of the bearing for the Stop – so a Stop with a bearing of “N” will have a normalised indicator of “N-bound” if the content of the indicator field is not a preferred value.



SMS prefixes

The NaptanCode provides a short identifier for identifying bus stops suitable for use in SMS and other mobile services. The identifier is ergonomic for use on a mobile keypad.

- Either digits or letters may be used (2=abc, 3=def, etc so that a single tap can be used for each character. For example 'manwapga' & '6269242' are equivalent
- Successive digits are avoided, to avoid input delay and reduce input keying errors.
- The digits '0' & '1' (which are likely to be confused with the characters 'O' & 'I') are not used except in the London Prefix.

The number is made up of a regional prefix and a suffix together making up a unique code. The prefix is three characters (a/2-w/9) except in London where it is the single digit '1'.

Each NaPTAN administrative area has one or more reserved SMS prefixes that are used to create the SMS i.e. NaptanCode for the stop points in its domain. These SMS prefixes are part of the National PT Gazetteer data and ensure that codes are unique nationally. They are chosen as far as possible to be memorable - e.g. MAN = Manchester, AND = Andover.

Suffixes are allocated by each authority.

This table shows the current SMS Codes & ATCO Area code prefixes

Prefix as char	Prefix as num	Mnemonic	Admin Area Name Inc Vars	Admin Area Name	ATCO	Traveline Region	Notes
	1	London	Greater London	Greater London	490	London	Uses Numerics
ADC	232	Aberdeen	Aberdeen City	Aberdeen	639	Scotland	
ADN	236	Aberdeenshire	Aberdeenshire	Aberdeenshire	630	Scotland	
AHL	245	Amphill	Central Bedfordshire	Central Bedfordshire	21	South East	
AND	263	Andover	Hampshire (var 3)	Hampshire	190	South West	Not in use
ANG	264	Angus	Angus	Angus	649	Scotland	
AOL	265	Clackmannanshire	Clackmannanshire	Clackmannanshire	668	Scotland	
AYL	295	Aylesbury	Buckinghamshire (var 2)	Buckinghamshire	40	South East	Not in use
AYR	297	Ayr	South Ayrshire	South Ayrshire	619	Scotland	
BFS	237	Bedford	Bedford	Bedford	20	South East	



Department for Transport

BHM	246	Birmingham	National - West Midlands Rail	National - Tram/Metro/Underground	940	DfT	Not used for Rail
BHM	246	Birmingham	West Midlands (var 5)	West Midlands	430	West Midlands	Not in use
BIR	247	Merseyside (var 3)	Merseyside	Merseyside	280	North West	Not in use
BKE	253	Basingstoke	Hampshire (var 4)	Hampshire	190	South West	Not in use
BKN	256	Bracknell Forest	Bracknell Forest	Bracknell Forest	38	South East	Not in use
BLA	252	Blackburn with Darwen	Blackburn with Darwen	Blackburn with Darwen	258	North West	Not in use
BLG	254	Blaenau Gwent	Blaenau Gwent	Blaenau Gwent	532	Wales	Not in use?
BLP	257	Blackpool	Blackpool	Blackpool	259	North West	
BLP	257	Blackpool	National - Blackpool Fleetwood	National - Train/metro Underground	940	North West	
BLY	259	Barnsley	National - South Yorkshire Rail & Fleetwood	National - Tram/Metro/Underground	940	DfT	Not in use
BLY	259	Barnsley	South Yorkshire (var 3)	South Yorkshire	370	Yorkshire	Not in use
BOU	268	Bournemouth	Bournemouth	Bournemouth	129	South West	
BRA	272	Bradford	West Yorkshire (var 3)	West Yorkshire	450	Yorkshire	
BRE	273	Bridgend	Bridgend	Bridgend	551	Wales	
BRI	274	Brighton	Brighton & Hove	Brighton & Hove	149	South East	
BRK	275	West Berkshire	West Berkshire	West Berkshire	30	South East	
BST	278	Bristol	Bristol, City of	Bristol	10	South West	
BTH	284	Bath	Bath & North East Somerset	Bath & North East Somerset	18	South West	
BUC	282	Buckinghamshire	Buckinghamshire	Buckinghamshire	40	South East	
BUR	287	Burton-on-Trent	Staffordshire (var 2)	Staffordshire	380	West Midlands	Not in use
BWC	292	Berwick	Northumberland (var 3)	Northumberland	310	North East	Not in use
BXT	298	Buxton	Derbyshire (var 4)	Derbyshire	100	East Midlands	Not in use
CDI	234	Cardiff	Cardiff	Cardiff	571	Wales	
CEJ	235	Ceredigion	Ceredigion	Ceredigion	523	Wales	
CHA	242	Chatham	Medway	Medway	249	South East	
CHE	243	Cheshire East	Cheshire East	Cheshire East	60	North West	
CHT	248	Cheltenham	Gloucestershire (var 3)	Gloucestershire	160	South West	Not in use



Department for Transport

CHW	249	Cheshire West	Cheshire West & Chester	Cheshire & Chester	61	North West	
CMB	262	Cambridgeshire	Cambridgeshire	Cambridgeshire	50	East Anglia	
CNW	269	Conwy	Conwy	Conwy	513	Wales	Not in use
CNW	269	Conwy	National - Great Orme Tramway	National - Tram/Metro/Underground	940	DfT	
COR	267	Cornwall	Cornwall & Isles of Scilly	Cornwall	80	South West	
CPY	279	Caerphilly	Caerphilly	Caerphilly	554	Wales	
CRM	276	Carmarthenshire	Carmarthenshire	Carmarthenshire	522	Wales	
CTF	283	Chesterfield	Derbyshire (var 2)	Derbyshire	100	East Midlands	Not in use
CUM	286	Cumbria	Cumbria	Cumbria	90	North West	
CVY	289	Coventry	West Midlands (var 2)	West Midlands	430	West Midlands	Not in use
CVY	289	Coventry	National- West Midlands Rail	National - Tram/Metro/Underground	940	DfT	Not in use
CYD	293	Croydon	Greater London (var 5)	Greater London	490	London	Not in use:Released
CYD	293	Croydon	National- London Rail System	National - Tram/Metro/Underground	940	DfT	Not in use:Released
DBE	323	Derbyshire	Derbyshire (var 3)	Derbyshire	100	East Midlands	Not in use
DBG	324	Denbighshire	Denbighshire	Denbighshire	511	Wales	
DBS	327	Derbyshire	Derbyshire	Derbyshire	100	East Midlands	
DBY	329	Derby	Derby	Derby	109	East Midlands	
DCT	328	Doncaster	National - South Yorkshire Rail	National - Tram/Metro/Underground	940	DfT	Not in use
DCT	328	Doncaster	South Yorkshire (var 4)	South Yorkshire	370	Yorkshire	Not in use
DGA	342	Dumfries Galloway	Dumfries Galloway	Dumfries Galloway	680	Scotland	
DHM	346	Durham	Durham (var 2)	Durham	130	North East	Not in use
DLO	356	Darlington	Darlington	Darlington	76	North East	
DND	363	Dundee	Dundee City	Dundee City	640	Scotland	
DOR	367	Dorset	Dorset	Dorset	120	South West	



Department for Transport

DUD	383	Dudley	National - West Midlands Rail	National - Tram/Metro/Underground	940	DfT	Not in use
DUD	383	Dudley	West Midlands (var 4)	West Midlands	430	West Midlands	Not in use
DUR	387	Durham	Durham	Durham	130	North East	
DVN	386	Devon	Devon	Devon	110	South West	
EGR	347	East Grinstead	West Sussex (var 2)	West Sussex	440	South East	Not in use
ELP	357	Ellesmere Port	Cheshire (var 2)	Cheshire	60	North West	Not in use
ENB	362	Edinburgh	City of Edinburgh	City of Edinburgh	620	Scotland	
ENG	364	Ealing	Greater London (var 4)	Greater London	490	London	Not in use:Released
ENG	364	Ealing	National - London Rail System	National - Tram/Metro/Underground	940	DfT	Not in use:Released
ERE	373	East Renfrewshire	East Renfrewshire	East Renfrewshire	612	Scotland	
ESC	372	Essex Chelmsford	Essex (var 2)	Essex	150	South East	Not in use
ESU	378	East Sussex	East Sussex	East Sussex	140	South East	
ESX	379	Essex	Essex	Essex	150	South East	
XTR	987	Exeter	Exeter	Cornwall	111	South West	Added
FAL	325	Falkirk	Falkirk	Falkirk	669	Scotland	
FIF	343	Fife	Fife	Fife	650	Scotland	
FLI	354	Flintshire	Flintshire	Flintshire	512	Wales	
FNL	365	Fenland	Cambridgeshire (var 3)	Cambridgeshire	50	East Anglia	Not in use
GAT	428	Gateshead	National - Tyne Wear Rail	National - Tram/Metro/Underground	940	DfT	Not in use
GAT	428	Gateshead	Tyne Wear (var 3)	Tyne Wear	410	North East	Not in use
GLA	452	Glasgow City	Glasgow City	Glasgow City	609	Scotland	Not in use
GLA	452	Glasgow City	National - Glasgow Rail System	National - Tram/Metro/Underground	940	DfT	Not in use
GLG	454	Glasgow City	Glasgow City (var 2)	Glasgow City	609	Scotland	Not in use
GLG	454	Glasgow City	National - Glasgow Rail System	National - Tram/Metro/Underground	940	DfT	Not in use
GLO	456	Gloucestershire	Gloucestershire	Gloucestershire	160	South West	
GLS	457	Gloucestershire	Gloucestershire (var 2)	Gloucestershire	160	South West	Not in use



Department for Transport

GRI	474	Grimsby	North East Lincolnshire	North East Lincolnshire	228	East Midlands	
GRM	476	Grantham	Lincolnshire (var 3)	Lincolnshire	270	East Midlands	Not in use
GTW	489	Gatwick	West Sussex (var 2)	West Sussex	440	South East	Not in use
GUE	483	Guernsey	Guernsey	Guernsey			Not in use
GUI	484	Guildford	Surrey (var 3)	Surrey	400	South East	Not in use
GWE	493	Gwent	Monmouthshire	Monmouthshire	533	Wales	
GW N	496	Gwynedd	Gwynedd	Gwynedd	540	Wales	
GW N	496	Gwynedd	National - Ffestiniog Railway	National - Tram/Metro/Underground	940	DfT	Not in use
HAL	425	Halton	Halton	Halton	68	North West	
HAM	426	Hampshire	Hampshire	Hampshire	190	South West	
HAR	427	Hartlepool	Hartlepool	Hartlepool	75	North East	
HAW	429	Harlow	Essex (var 3)	Essex	150	South East	Not in use
HEM	436	Hemel Hempstead	Hertfordshire (var 3)	Hertfordshire	210	South East	Not in use
HER	437	Herefordshire	Herefordshire, County of	Herefordshire	209	West Midlands	
HFL	435	Huddersfield	West Yorkshire (var 7)	West Yorkshire	450	Yorkshire	Not in use
HJT	458	Hjaltland	Shetland Islands	Shetland Islands	603	Scotland	
HLD	453	Highland	Highland	Highland	670	Scotland	
HLX	459	Halifax	West Yorkshire (var 6)	West Yorkshire	450	Yorkshire	Not in use
HRE	473	Harrogate	West Yorkshire (var 5)	West Yorkshire	450	Yorkshire	Not in use
HRT	478	Hertfordshire	Hertfordshire	Hertfordshire	210	South East	
HTS	487	Hastings	East Sussex (var 3)	East Sussex	140	South East	Not in use
HUN	486	Huntingdon	Cambridgeshire (var 2)	Cambridgeshire	50	East Anglia	Not in use
INV	468	Inverclyde	Inverclyde	Inverclyde	613	Scotland	
IOW	469	Isle of Wight	Isle of Wight	Isle of Wight	230	South East	
IPW	479	Ipswich	Suffolk (var 3)	Suffolk	390	East Anglia	Not in use
JSY	579	Jersey	Jersey	Jersey		Not in use	
KDL	535	Kendal	Cumbria (var 2)	Cumbria	90	North West	Not in use
KMK	565	Kilmarnock	East Ayrshire	East Ayrshire	618	Scotland	
KNT	568	Kent	Kent	Kent	240	South East	



Department for Transport

KNT	568	Kent	National - Kent Rail System	National - Tram/Metro/Underground	940	DfT	Not in use
(KOH)	564	Kingston upon Hull	Kingston upon Hull, City of	Kingston upon Hull	229	Yorkshire	Uses Numeric
LAN	526	Lancashire	Lancashire	Lancashire	250	North West	
LAN	526	Lancashire	National - Blackwood Fleetwood rail	National - Tram/Metro/Underground	940	DfT	Not in use
LAT	528	Lancaster	Lancashire (var 2)	Lancaster	250	North West	
LBR	527	Loughborough	Leicestershire (var 2)	Leicestershire	260	East Midlands	Not in use
LBZ	529	Leighton Buzzard	Bedfordshire (var 2)	Bedfordshire	20	South East	Not in use
LDN	536	London	Greater London	Greater London	490	London	Not in use:Released
LDN	536	London	National - London Rail System	National - Tram/Metro/Underground	940	DfT	Not in use:Released
LDS	537	Leeds	West Yorkshire (var 2)	West Yorkshire	450	Yorkshire	
LEI	532	Leicester	Leicester	Leicester	269	East Midlands	Till July 2007
LEI	532	Leicestershire	Leicestershire	Leicestershire	260	East Midlands	From July 2007
LEC	532	Leicestershire	Leicestershire (var 4)	Leicestershire	260	East Midlands	Till July 2007
LEC	532	Leicester	Leicester	Leicester	269	East Midlands	Not in use
LEW	539	Lewes	East Sussex (var 2)	East Sussex	140	South East	Not in use
LGP	547	Lochgilthead	Argyll & Bute (Lochgilthead)	Argyll & Bute	607	Scotland	
LIC	542	Lincolnshire	Lincolnshire (var 2)	Lincolnshire	270	East Midlands	Not in use
LIN	546	Lincolnshire	Lincolnshire	Lincolnshire	270	East Midlands	
LIV	548	Liverpool	Merseyside (var 2)	Merseyside	280	North West	Not in use
LTA	582	East Lothian	East Lothian	East Lothian	627	Scotland	
LTN	586	Luton	Luton	Luton	29	South East	
LYT	598	Lytham St Annes	Lancashire (var 4)	Lancashire	250	North West	Not in use
MAI	624	Maidstone	Kent (var 2)	Kent	240	South East	Not in use



Department for Transport

MAI	624	Maidstone	National -Kent Rail System	National - Tram/Metro/Underground	940	DfT	Not in use
MAN	626	Manchester	Greater Manchester	Greater Manchester	180	North West	
MAN	626	Manchester	National - Manchester Metroline	National - Tram/Metro/Underground	940	DfT	Not in use
MBR	627	Middlesbrough	Middlesbrough	Middlesbrough	79	North East	
MDX	639	Middlesex	Greater London (var 2)	Greater London	490	London	Not in use:Released
MDX	639	Middlesex	National - London Rail System	National - Tram/Metro/Underground	940	DfT	Not in use:Released
MEL	635	Melton Mowbray	Leicestershire (var 3)	Leicestershire	260	East Midlands	Not in use
MER	637	Merseyside	Merseyside	Merseyside	280	North West	Not in use
MHT	648	Midhurst	West Sussex (var 2)	West Sussex	440	South East	Not in use
MID	643	Midlothian	Midlothian	Midlothian	628	Scotland	
MLG	654	Milngavie	East Dunbartonshire	East Dunbartonshire	611	Scotland	
MLT	658	Milton Keynes	Milton Keynes	Milton Keynes	49	South East	
MPH	674	Morpeth	Northumberland (var 2)	Northumberland	310	North East	Not in use
MRC	672	Morecombe	Lancashire (var 3)	Lancashire	250	North West	Not in use
MRY	679	Moray	Moray	Moray	638	Scotland	
MTY	689	Merthyr Tydfil	Merthyr Tydfil	Merthyr Tydfil	553	Wales	
NAY	629	North Ayrshire	North Ayrshire	North Ayrshire	617	Scotland	
NCL	625	Newcastle	Tyne Wear (var 2)	Tyne Wear	410	North East	Not in use
NCL	625	Newcastle	National Tyne Wear Rail System	National - Tram/Metro/Underground	940	DfT	Not in use
NFO	636	Norfolk	Norfolk	Norfolk	290	East Anglia	
NHA	642	Northampton Town	Northamptonshire (var 2)	Northamptonshire	300	East Midlands	Not in use
NLA	652	North Lanarkshire	North Lanarkshire	North Lanarkshire	616	Scotland	
NLD	653	Northumberland	Northumberland	Northumberland	310	North East	
NLY	659	Newcastle-Under-Lyme	Staffordshire (var 2)	Staffordshire	380	West Midlands	Not in use
NPT	678	Neath Port Talbot	Neath Port Talbot	Neath Port Talbot	582	Wales	
NRE	673	NRES	National - Rail	National - Rail	910	DfT	



Department for Transport

NRW	679	Norwich	Norwich	Norfolk	291	East Anglia	Added
NYS	697	North Yorkshire	Yorkshire	Yorkshire	320	Yorkshire	
NTH	684	Northamptonshire	Northamptonshire	Northamptonshire	300	East Midlands	
NTH	684	Northamptonshire	National - Nottingham Rail System	National - Tram/Metro/Underground	940	DfT	Not in use
NTM	686	Nottingham	Nottingham	Nottingham	339	East Midlands	
NTS	687	Nottinghamshire	Nottinghamshire	Nottinghamshire	330	East Midlands	Not in use
NTS	687	Nottinghamshire	National - Nottinghamshire Rail System	National - Tram/Metro/Underground	940	DfT	Not in use
NUE	683	Nuneaton	Warwickshire (var 2)	Warwickshire	420	West Midlands	Not in use
NWK	695	Newark on Trent	Nottinghamshire (var 2)	Nottinghamshire	330	East Midlands	Not in use
NTS	695	Nottinghamshire	National - Nottinghamshire Rail System	National - Tram/Metro/Underground	940	DfT	Not in use
NWM	696	West Midlands	West Midlands	West Midlands	430	West Midlands	
NWM	696	West Midlands	National - West Midlands Rail	National - Tram/Metro/Underground	940	DfT	Not in use
NWP	697	Newport	Newport	Newport	531	Wales	
NXG	694	National Coach	National - Coach	National - Coach	900	DfT	
(NYC)	692	North Yorkshire	National - Wensleydale Railway	National - Tram/Metro/Underground	940	DfT	Uses Numerics
ORK	675	Orkney Islands	Orkney Islands	Orkney Islands	602	Scotland	
ORM	676	Ormskirk	Lancashire (var 6)	Lancashire	250	North West	Not in use
OXF	693	Oxfordshire	Oxfordshire	Oxfordshire	340	South East	
PAI	724	Paisley	National - Glasgow Rail System	National - Tram/Metro/Underground	940	DfT	Not in use
PAI	724	Paisley	Glasgow City (var 3)	Glasgow City	609	Scotland	Not in use
PEM	736	Pembrokeshire	Pembrokeshire	Pembrokeshire	521	Wales	
PER	737	Perth	Perth	Perth & Kinross	648	Scotland	
PET	738	Peterborough	Peterborough	Peterborough	59	East Midlands	



Department for Transport

PLE	753	Poole	Poole	Poole	128	South West	
PLY	759	Plymouth	Plymouth	Plymouth	118	South West	
POR	767	Portsmouth	Portsmouth	Portsmouth	199	South West	
POW	769	Powys	Powys	Powys	561	Wales	
RDG	734	Reading	Reading	Reading	39	South East	
REC	732	Redcar & Cleveland	Redcar & Cleveland	Redcar & Cleveland	78	North East	
REW	739	Renfrewshire	Renfrewshire	Renfrewshire	614	Scotland	
RHO	746	Rhondda, Cynon, Taff	Rhondda, Cynon, Taff	Rhondda, Cynon, Taff	552	Wales	
RTL	785	Rutland	Rutland	Rutland	268	East Midlands	
SAN	726	Sandwell	West Midlands (var 6)	West Midlands	430	West Midlands	Not in use
SAN	726	Sandwell	National - West Midlands Rail	National - Tram/Metro/Underground	940	DfT	Not in use
SBR	727	Scottish Borders	Scottish Borders	Scottish Borders	690	Scotland	
SCU	728	Scunthorpe	North Lincolnshire	North Lincolnshire	227	East Midlands	
SFL	735	Suffolk	Suffolk (var 2)	Suffolk	390	East Anglia	Not in use
SGL	745	South Gloucestershire	South Gloucestershire	South Gloucestershire	17	South West	
SHF	743	Sheffield	South Yorkshire (var 2)	South Yorkshire	370	Yorkshire	Not in use
SHF	743	Sheffield	National -South Yorkshire Railway	National - Tram/Metro/Underground	940	DfT	Not in use
SHR	747	Shropshire	Shropshire	Shropshire	350	West Midlands	
SHW	749	Shrewsbury	Shropshire (var 2)	Shropshire	350	West Midlands	Not in use
SKM	756	Skelmersdale	Lancashire (var 5)	Lancashire	250	North West	Not in use
SKT	758	Stockton-on-Tees	Stockton-on-Tees	Stockton-on-Tees	77	North East	
SLA	752	South Lanarkshire	South Lanarkshire	South Lanarkshire	615	Scotland	
SLG	754	Slough	Slough	Slough	37	South East	
SND	763	Sunderland	Tyne Wear (var 4)	Tyne Wear	410	North East	Not in use
SND	763	Sunderland	National - Tyne Wear Rail	National - Tram/Metro/Underground	940	DfT	Not in use



Department for Transport

SOA	762	Southend-on-Sea	Southend-on-Sea	Southend-on-Sea	158	South East	
SOH	764	Southampton	Southampton	Southampton	198	South West	
SOH	764	Solihull	National - West Midlands Rail System	National - Tram/Metro/Underground	940	DfT	Not in use
SOL	765	Solihull	West Midlands (var 7)	West Midlands	430	West Midlands	
SOT	768	Somerset	Somerset	Somerset	360	South West	
STA	782	Staffordshire	Staffordshire	Staffordshire	380	West Midlands	
STI	784	Stirling	Stirling	Stirling	660	Scotland	
STO	786	Stoke-on-Trent	Stoke-on-Trent	Stoke-on-Trent	389	West Midlands	
SUF	783	Suffolk	Suffolk	Suffolk	390	East Anglia	
SUR	787	Surrey	Surrey	Surrey	400	South East	
SUY	789	Surrey	Surrey (var 2)	Surrey	400	South East	Not in use
SWA	792	Swansea	Swansea	Swansea	581	Wales	
SWI	794	Swindon	Swindon	Swindon	468	South West	
SYO	796	South Yorkshire	South Yorkshire	South Yorkshire	370	Yorkshire	
SYO	796	South Yorkshire	National - South Yorkshire Railway	National - Tram/Metro/Underground	940	DfT	Not in use
TAU	828	Taunton	Somerset (var 2)	Somerset	360	South West	Not in use
TBY	829	Torbay	Torbay	Torbay	119	South West	
TEL	835	Telford & Wrekin	Telford & Wrekin	Telford & Wrekin	359	West Midlands	
THA	842	Thanet	Kent (var 4)	Kent	240	South East	Not in use
THA	842	Thanet	National - Kent Railway System	National - Tram/Metro/Underground	940	DfT	Not in use
THU	848	Thurrock	Thurrock	Thurrock	159	South East	
TNB	862	Tonbridge	Kent (var 3)	Kent	240	South East	Not in use
TNB	862	Tonbridge	National - Kent Railway System	National - Tram/Metro/Underground	940	DfT	Not in use
TOR	867	Torfaen	Torfaen	Torfaen	534	Wales	
TSD	873	Teesdale	Durham (var 4)	Durham	130	North East	Not in use
TWR	897	Tyne Wear	Tyne Wear	Tyne Wear	410	North East	



Department for Transport

TWR	897	Tyne Wear	National - Tyne Wear Rail System	National - Tram/Metro/Underground	940	DfT	Not in use
TYD	893	Tynedale	Northumberland (var 4)	Northumberland	310	North East	Not in use
UXB	892	Uxbridge	Greater London (var 3)	Greater London	490	London	Not in use: Released
UXB	892	Uxbridge	National - London Rail System	National - Tram/Metro/Underground	940	DfT	Not in use: Released
VGL	845	Vale of Glamorgan	Vale of Glamorgan, The	Vale of Glamorgan, The	572	Wales	
(WAF)	923	Wakefield	West Yorkshire (var 4)	West Yorkshire	450	Yorkshire	Not in use
WAL	925	Walsall	West Midlands (var 3)	West Midlands	430	West Midlands	Not in use
WAL	925	Walsall	National - West Midlands Rail	National - Tram/Metro/Underground	940	DfT	Not in use
WAR	927	Warwickshire	Warwickshire	Warwickshire	420	West Midlands	
WAT	928	Watford	Hertfordshire (var 2)	Hertfordshire	210	South East	Not in use
WCM	926	High Wycombe	Buckinghamshire (var 3)	Buckinghamshire	40	South East	Not in use
WDU	938	West Dunbartonshire	West Dunbartonshire	West Dunbartonshire	608	Scotland	
WEA	932	Wearside	Durham (var 3)	Durham	130	North East	Not in use
WEM	936	Wembley	Greater London (var 6)	Greater London	490	London	Not in use: Released
WEM	936	Wembley	National - London Rail System	National - Tram/Metro/Underground	940	DfT	Not in use: Released
WIC	942	Winchester	Hampshire (var 2)	Hampshire	190	South West	Not in use
WIL	945	Wiltshire	Wiltshire	Wiltshire	460	South West	
WIN	946	Windsor & Maidenhead	Windsor & Maidenhead	Windsor & Maidenhead	36	South East	
WIS	947	Western Isles	Western Isles	Western Isles	601	Scotland	
WLO	956	West Lothian	West Lothian	West Lothian	629	Scotland	
WLV	958	Wolverhampton	West Midlands var 8	West Midlands	380	West Midlands	Not in use
WOC	962	Worcestershire	Worcestershire	Worcestershire	200	West Midlands	
WOK	965	Wokingham	Wokingham	Wokingham	35	South East	
WRE	973	Wrexham	Wrexham	Wrexham	514	Wales	



Department for Transport

WR G	974	Warrington	Warrington	Warrington	69	North West	
WRL	975	Wirral	Merseyside (var 2)	Merseyside	280	North West	Not in use
WS M	976	Weston Super Mare	North Somerset	North Somerset	19	South West	
WSX	979	West Sussex	West Sussex	West Sussex	440	South East	
YKW	959	West Yorkshire	West Yorkshire	West Yorkshire	450	Yorkshir e	
YNY	969	Ynys Môn	Ynys Môn	Isle of Anglesey	541	Wales	Not in use
(YO E)	963	Yorkshire East	East Riding of Yorkshire	East Riding of Yorkshire	220	Yorkshir e	Uses Numeric
YOR	967	York	York	York	329	Yorkshir e	Not in use



Department
for Transport

NaPTAN – UPLOADING DATA

Introduction

This section describes how to upload data to the NaPTAN database. See also the [user guide](#), available from [the NaPTAN data management website](#). For support please contact the NaPTAN helpdesk at naptan.nptg@dft.gsi.gov.uk

What to Upload

The data is to be provided in a zipped or unzipped NaPTAN version 2 XML file containing all NaPTAN points within an administrative area.

Unzipped files should be named “NaPTAN<area_id>.xml” For example, “NaPTAN029.xml”

Zipped files should be named “NaPTAN<area_id>.zip”, with the xml file itself named as above. For example “NaPTAN029.zip”

Problems

If any problems are found with the uploaded data file, DfT will contact the nominated user - usually the person who uploaded the file.



Annex A – NaPTAN CSV tables

NaPTAN data may be downloaded as XML, CSV or GTFS. Figure shows the relationship between the CSV files/tables for NaPTAN V2 data

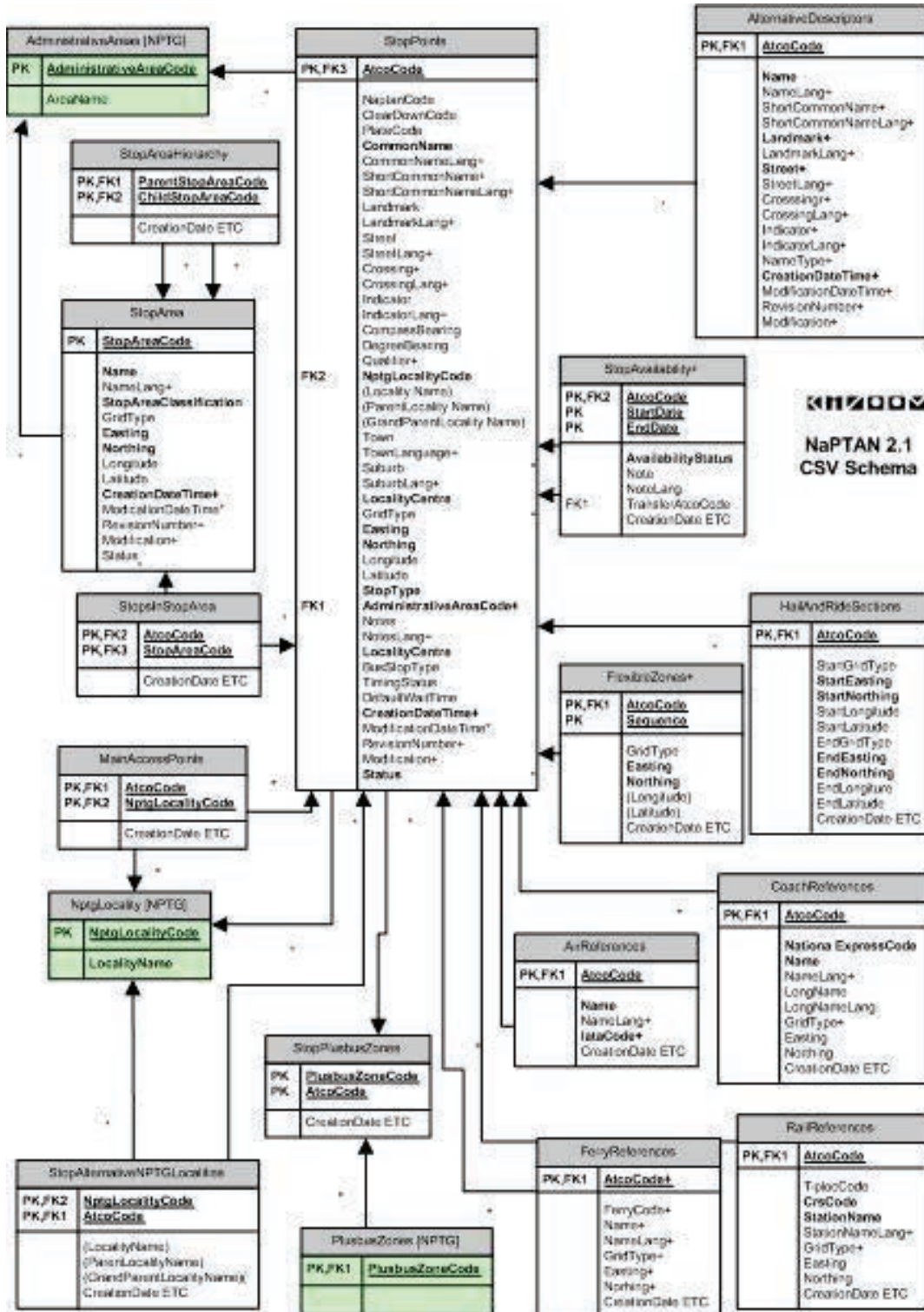


Figure 1 - Table relationships for NaPTAN V2 data



Department for Transport

The following tables describe the data stored in each CSV file. The data types of each field are the same as the XML output e.g. StopType is a 3 letter mnemonic. See www.dft.gov.uk/public-transportdatamanagement.

Stops table

Parent Element	CSV Field /Element	Old CSV Field Name	Mandatory	Type	Size	V
StopPoint	AtcoCode	ATCOCode	Yes	PK	12	1.0
Identifiers	NaptanCode	SMSNumber	No	AK	12	1.0
	PlateCode	new	No	<i>nmtojen</i>	12	2.0
	CleardownCode	new	No	<i>int</i>	10	+2.0
Descriptor	CommonName	same	Yes	<i>placeName</i>	48	1.0
	CommonNameLang+	new	No	<i>xml:language</i>	2	+2.0
	ShortCommonName	new	No	<i>placeName</i>	48	+2.0
	ShortCommonName Lang+	new	No	<i>xml:language</i>	2	+2.0
	Landmark	same	No (2.1)	<i>name</i>	48	1.0
	LandmarkLang+	new	No	<i>xml:language</i>	2	+2.0
	Street	same	No (21)	<i>placeName</i>	48	1.0
	StreetLang+	new	No	<i>xml:language</i>	2	+2.0
	Crossing	new	No	<i>placeName</i>	48	+2.0
	CrossingLang+	new	No	<i>xml:language</i>	2	+2.0
	Indicator	Identifier	No	<i>placeName</i>	48	1.0
	IndicatorLang+	new	No	<i>xml:language</i>	2	+2.0
	Bearing	Direction	Yes	<i>bearing</i>	2	1.0
Place	NptgLocalityCode	NatGazID	Yes	FK	8	1.0
--derived	LocalityName	NatGazLocality	Derived	<i>placeName</i>	48	1.0
--derived	ParentLocalityName	ParentNatGazLocality	Derived	<i>placeName</i>	48	1.0
--derived	GrandParentLocality Name	NatGazLocality	Derived	<i>placeName</i>	48	1.0
Place	Town	same	No	<i>placeName</i>	48	1.0
	TownLang+	new	No	<i>xml:language</i>	2	+2.0
Place	Suburb	same	No	<i>place Name</i>	48	1.0



Department for Transport

Parent Element	CSV Field /Element	Old CSV Field Name	Mandatory	Type	Size	V
	SuburbLang+	new	No	<i>xml:language</i>	2	+2.0
StopPoint	LocalityCentre	same	Yes	<i>xsd:boolean</i>	1	*1.0
Place	GridType	same	No	<i>gridType</i>	1	1.0
Place	Easting	same	Yes	<i>easting</i>	6	1.0
Place	Northing	same	Yes	<i>northing</i>	7	1.0
--derived	Longitude	lon	Derived	<i>longitude</i>		1.0
--derived	Latitude	lat	Derived	<i>latitude</i>		1.0
StopPoint	StopType	StopType	Yes	enum	3	1.0
Bus	BusStopType	BusStopType	No	enum	3	1.0
Bus	TimingStatus	BusRegistrationStatus	No	enum	3	1.0
Bus	DefaultWaitTime	DefaultWaitTime	No	duration		
StopPoint	Notes	same	No	<i>nlString</i>	*	1.0
StopPoint	NotesLang+	new	No	<i>xml:language</i>	2	+2.0
StopPoint	AdministrativeAreaCode+	new	Yes	FK	8	+2.0
StopPoint	CreationDateTime+	new	Yes	<i>xsd:dateTime</i>	10	+2.0
StopPoint	ModificationDateTime	LastChanged	No	<i>xsd:dateTime</i>	10	*1.0
StopPoint	RevisionNumber+	new	No	<i>revision</i>	5	+2.0
StopPoint	Modification	RecordStatus	No	<i>modification</i>	3	1.0
StopPoint	Status	RecordStatus	No	enum	3	1.0

Table 1 – Stops.csv Content

AlternativeDescriptor Table

Parent Element	Transfer Field	Old CSV Field Name	Mandatory	Type	Size	V
Descriptor	AtcoCode	ATCOCode	Yes	PK, FK	12	1.0
Descriptor	CommonName	same	Yes	<i>placeName</i>	48	1.0
CommonName	CommonNameLang+	new	No	<i>xml:language</i>	2	+2.0
Descriptor	ShortName	same	Yes	<i>placeName</i>	48	1.0



Department for Transport

ShortName	ShortCommonNameLang+	new	No	<i>xml:language</i>	2	+2.0
Descriptor	Landmark	same	No (2.1)	<i>placeName</i>	48	1.0
LandMark	LandmarkLang+	new	No	<i>xml:language</i>	2	+2.0
Descriptor	Street	same	No (2.1)	<i>placeName</i>	48	1.0
Street	StreetLang+	new	No	<i>xml:language</i>	2	+2.0
Descriptor	Crossing	same	Yes	<i>placeName</i>	48	+2.0
Crossing	CrossingLang+	new	No	<i>xml:language</i>	2	+2.0
Descriptor	Indicator	Identifier	Yes	<i>placeName</i>	48	1.0
Indicator	IndicatorLang+	new	No	<i>xml:language</i>	2	+2.0
Descriptor	CreationDateTime	new	Yes	<i>xsd:dateTime</i>	10	+2.0
Descriptor	ModificationDateTime	new	No	<i>xsd:dateTime</i>	10	+2.0
Descriptor	RevisionNumber	new	No	<i>revision</i>	5	+2.0
Descriptor	Modification+	new	No	<i>modification</i>	3	+2.0

Table 2 - AlternativeDescriptors.csv Content

StopLocalities Table

Parent Element	Transfer Field	Old CSV Field Name	Mandatory	Type	Size	V
AltLocalities	AtcoCode	ATCOCode	Yes	PK, FK	12	1.0
AltLocalities	NptgLocalityCode	NatGazID	Yes	PK, FK	8	1.0
--derived	(LocalityName)	NatGazLocality	Derived	<i>placeName</i>	48	1.0
--derived	(ParentLocalityName)	ParentNatGazLocality	Derived	<i>placeName</i>	48	1.0
--derived	(GrandParent-LocalityName)	NatGazLocality	Derived	<i>placeName</i>	48	1.0
AltLocalities	CreationDateTime	new	No	<i>xsd:dateTime</i>	10	+2.0
AltLocalities	ModificationDateTime	new	No	<i>xsd:dateTime</i>	10	+2.0
AltLocalities	RevisionNumber	new	No	<i>revision</i>	5	+2.0
AltLocalities	Modification+	new	No	<i>modification</i>	3	+2.0

Table 3 - StopLocalities.csv Content



StopAvailabilities Table

Parent Element	Transfer Field	Old CSV Field Name	Mandatory	Type	Size	V
StopAvailability	AtcoCode	new	Yes	PK, FK	12	+2.0
StopAvailability	StartDate	new	Yes	PK, xsd:date	8	+2.0
StopAvailability	EndDate	new	No	xsd:date	8	+2.0
StopAvailability	AvailabilityStatus	new	Yes	Enum (Active Suspended Transferred)	48	+2.0
StopAvailability	Note	new	No	nlString	*	+2.0
Note	NoteLang+	new	No	language	2	+2.0
StopAvailability	TransferStopAtcoCode	new	No	FK	12	+2.0
StopAvailability	CreationDateTime	new	No	xsd:dateTime	10	+2.0
StopAvailability	ModificationDateTime	new	No	xsd:dateTime	10	+2.0
StopAvailability	RevisionNumber	new	No	revision	5	+2.0
StopAvailability	Modification+	new	No	modification	3	+2.0

Table 4 - StopAvailabilities.csv Content

Hail & Ride CSV Table

Parent Element	Transfer Field	Old CSV Field Name	Mandatory	Type	Size	V
HailAndRideSection	AtcoCode	ATCOCode	Yes	PK, FK	12	1.0
StartPoint	StartGridType	same	Yes	gridType	1	1.0
	StartEasting	same	Yes	easting	6	1.0
	StartNorthing	same	Yes	northing	7	1.0
EndPoint	EndGridType	same	Yes	gridType	1	1.0
	EndEasting	same	Yes	easting	6	1.0
	EndNorthing	same	Yes	northing	7	1.0
HailAndRideSection	CreationDateTim e	new	No	xsd:dateTime	10	+2.0



HailAndRideSection	ModificationDate Time	new	No	<i>xsd:dateTime</i>	10	+2.0
HailAndRideSection	RevisionNumber	new	No	<i>revision</i>	5	+2.0
HailAndRideSection	Modification+	new	No	<i>modification</i>	3	+2.0

Table 5 - HailRide.csv Content

Flexible CSV Table

Parent Element	Transfer Field	Old CSV Field Name	Mandatory	Type	Size	V
FlexibleZone	AtcoCode	new	Yes	PK, FK	12	2.0
FlexibleZone	Sequence	new	Yes	<i>xsd:integer</i>	5	2.0
Location	GridType	new	Yes	<i>gridType</i>	1	2.0
Location	Easting	new	Yes	<i>easting</i>	6	2.0
Location	Northing	new	Yes	<i>northing</i>	7	2.0
FlexibleZone	CreationDateTime	new	No	<i>xsd:dateTime</i>	10	+2.0
FlexibleZone	ModificationDateTime	new	No	<i>xsd:dateTime</i>	10	+2.0
FlexibleZone	RevisionNumber	new	No	<i>revision</i>	5	+2.0
FlexibleZone	Modification+	new	No	<i>modification</i>	3	+2.0

Table 6 - Flexible.csv Content

StopAreas (Groups Table)

Parent Element	Transfer Field	Old CSV Field Name	Mandatory	Type	Size	V
StopArea	StopAreaCode	GroupID	Yes	PK	12	1.0
StopArea	Name	GroupName	Yes	<i>placeName</i>	48	1.0
Name	NameLang+	new	No	<i>xml:language</i>	2	+2.0
StopArea	AdministrativeAreaCode+	new	Yes	FK	8	+2.0
StopArea	StopAreaType	Type	Yes	enum (1)	4	1.0



Location	GridType	same	No	<i>gridType</i>	1	1.0
Location	Easting	same	Yes	<i>easting</i>	6	1.0
Location	Northing	same	Yes	<i>northing</i>	7	1.0
StopArea	CreationDateTime+	new	Yes	<i>xsd:dateTime</i>	10	+2.0
StopArea	ModificationDateTime	LastChanged	No	<i>xsd:dateTime</i>	10	1.0
StopArea	RevisionNumber+	new	No	<i>revision</i>	5	+2.0
StopArea	Modification+	new	No	<i>modification</i>	3	+2.0
StopPoint	Status	new	No	enum	3	+2.0

Table 7 - StopAreas.csv Content

StopsInStopArea (StopsInGroups) Table

Parent Element	Transfer Field	Old CSV Field Name	Mandatory	Type	Size	V
StopAreaRef	StopAreaCode	GroupID	Yes	PK, FK	12	1.0
StopAreaRef	AtcoCode	ATCOCode	Yes	PK, FK	12	1.0
StopAreaRef	CreationDateTime+	new	No	<i>xsd:dateTime</i>	10	+2.0
StopAreaRef	ModificationDateTime+	new	No	<i>xsd:dateTime</i>	10	+2.0
StopAreaRef	RevisionNumber+	new	No	<i>revision</i>	5	+2.0
StopAreaRef	Modification+	new	No	<i>modification</i>	3	+2.0

Table 8 - StopsInArea.csv Content

AreaHierarchy (Groups In Group) Table

Parent Element	Transfer Field	Old CSV Field Name	Mandatory	Type	Size	V
ParentStopArea	ParentStopAreaCode	ParentID	Yes	PK, FK	12	1.0
ParentStopArea	ChildStopAreaCode	ChildID	Yes	PK, FK	12	1.0
ParentStopArea	CreationDateTime+	new	No	<i>xsd:dateTime</i>	10	+2.0
ParentStopArea	ModificationDateTime	LastChanged	No	<i>xsd:dateTime</i>	10	+2.0
ParentStopArea	RevisionNumber+	new	No	<i>revision</i>	5	+2.0



Department for Transport

ParentStopArea	Modification+	new	No	<i>modification</i>	3	+2.0
----------------	----------------------	-----	----	---------------------	---	------

Table 9 - AreaHierachy.csv Content



User Guide to Archiving NaPTAN Stops

Written by: Roger Slevin/Peter Day
Updated by: Helen Pattington
Date: 28th July 2014
Version Number: 1.1

1. Introduction

This document sets out the provision of a facility to archive NaPTAN stops. It sets out the reasons for introducing the facility, describes the initial transition to use of archiving and explains the ongoing management of stop data using the facility.

The use of archiving is not mandatory and authorities with few DELETED NaPTAN stop records may find no pressing need for it. Authorities with large numbers of DELETED records, however, will gain significantly from this new arrangement.

Any queries regarding the implementation of archiving should be directed to DfT (naptan.nptg@dft.gsi.gov.uk).

2. Current Position

The NaPTAN database holds close to 400,000 stop records. A small but significant number of these records have a Modification value of DELETED. At any point in time a local authority may also have a number of records shown as PENDING, as a result of differences between the set of data held in the national database and that uploaded in a submission (i.e. stops missing in the upload). These PENDING stops are unaffected by the introduction of archiving.

A NaPTAN stop is deleted when the local authority owning that stop decides it is no longer required for services. They do this by setting the Modification value of the stop in their stop database to DELETED, which is then carried with the stop record when it is uploaded to the national NaPTAN database, and this then becomes the new Modification value when the records are overwritten. The rules for managing NaPTAN stops state that these stops cannot be physically removed from the database because:

- they may be used by other services, causing potential data integrity problems if they are no longer available;
- they may be needed for data audit and traceability purposes;
- they could have uses outside of journey planning; and
- they may be referenced within an Electronic Bus Service Registration (EBSR) and therefore form part of an important legal record which must be retained permanently.



Department for Transport

It has become clear, however, that a high proportion of these DELETED stops are never referred to again. Although they are held in local databases, they are effectively redundant records, which can cause some confusion and cluttering of the database. The DELETED stops are also held nationally and cause problems for systems that display stop records. This is particularly a problem where stops have been re-numbered but have the same OSGR, thus overlaying deleted and active stops (e.g. on the NaPTAN Viewer).

It has been decided to improve this situation by introducing the facility to ARCHIVE records, allowing them to be removed from the main stops databases in a controlled and auditable way.

3. Summary of Archiving

The NaPTAN schema has been amended to include a new Modification value of ARCHIVED (ARC). Stops can be set to ARCHIVED, provided certain conditions are met. This will allow records of ARCHIVED stops to be held nationally, but separated logically from the all other “active” stops. ARCHIVING will be a one-way process and it will not be possible to reinstate records in the national database once they have been ARCHIVED, but the ARCHIVED stops records will continue to be available for download e.g. for auditing or tracing purposes. Once a record’s Modification value has been set to ARCHIVED in the national database, the local authority owner will be able to remove the records for the ARCHIVED stops from their local database.

A separate procedure is available to handle bulk ARCHIVING, whereby a large group of stops can be ARCHIVED in one pass.

Systems used to hold NaPTAN stop data will need to be capable of setting the Modification value of stops to the new ARCHIVED value and should be capable of exporting data in accordance with the NaPTAN v2.2 schema (v2.1 does not support archiving). The date/time stamping of changes to stop records is an integral and important part of the validation checks carried out. However it will also be possible to submit a list of stops for ARCHIVING if the locally-used NaPTAN editing system does not yet support ARCHIVING.

4. Detailed Description of Archiving

NaPTAN Schema Changes

ARCHIVE will be a valid setting for the Modification field in the Stops data element and the following associated elements:

- AlternativeDescriptor
- AlternativeNPTGLocality
- HailAndRide
- StopsInStopArea
- FlexibleZone
- StopAvailability

(To avoid any ambiguity, StopArea and AreaHierarchy are NOT included in these changes, even though v2.2 of the NaPTAN schema would not prevent these records being archived. The exclusion of archiving of StopArea and AreaHierarchy is a business rule, and attempts to archive such records will result in those records not validating on upload).



Department for Transport

The acceptable values for Modification will include ARChive, in addition to NEW, REVisE and DELete. The acceptable values for Status settings will remain unchanged, i.e. ACTive, Inactive and PENding.

Rules for Archiving (individual stops)

The data submission procedure is unchanged.

For stops to be considered for archiving their status must be set to Inactive and their the Modification value must be set to DELete, with the Modification DateTime changed to record the date and time when the change to Modification = DELete was made.

A stop with Modification set to DELete for a minimum of three years can be edited so that the Modification value becomes ARChived. A data submission for uploading to the NaPTAN database will then include the ARChived stops, which will be held in the national stops database.

Once a stop is uploaded with a valid ARChive Modification set, this cannot be changed and it remains ARChived permanently. ARChiving is a one-way process, without exception.

Once an ARChived record has been uploaded successfully the Local Authority is free to delete that record from its local stops database. It is not then necessary for these stops to be included in any subsequent uploads. If a stop previously modified to ARChive is re-submitted, still with a modification of ARChive, this does not cause a data submission error or rejection.

If a stop that was previously set to ARChive, and uploaded successfully, is re-submitted subsequently, with its Modification set to NEW, REVisE or DELete, an error will be reported and that stop's Modification will remain as ARChive in the National database.

Where data is submitted for the associated elements, as listed above, the same checking and validation rules will apply. Where the parent stop is set to ARChived, then the associated elements will be changed to ARChived in the national database, whether or not this has been done in the upload. However where an associated element is marked as ARChived but the principal stop record is not ARChived, then the record will become PENding and an error report will be returned.

5. **Rules for Archiving (Bulk Updates)**

A separate procedure will be available to ARChive whole groups of stops, e.g. a number created in error or replaced. This procedure can also be used where there is a need to ARChive stops that were DELeted less than 3 years ago. This will follow a number of agreed steps:

The Local Authority will compile a list of the stops to be ARChived and send the request to DfT (naptan.nptg@dft.gsi.gov.uk) together with a short explanation of the reason why the stops need to be ARChived.

DfT will check the content of the list and approve the ARChiving (this could require consultation with operators who may be coding their services to these stops).

DfT will perform the bulk ARChiving at the earliest opportunity and inform the Local Authority when it has been completed and when the updated data is available for downloading and for viewing (e.g. using NaPTAN viewing tools).



Department for Transport

An alternative method for ARCHiving stops which have not been DELeted for more than three years will be available on some NaPTAN editing systems. Where this is available there will be a procedure for unlocking the 3yr rule on the local editing system with the specific consent of DfT. It will then be possible for authorities using such systems to set records to ARCHived within their normal editing routines. The upload file created from this process will need to be e-mailed (and NOT uploaded) to DfT for processing so that the tests for the 3yr rule will not be applied to that data. Such arrangements will only exist where DfT is persuaded that they are appropriate, and each authorisation will only apply to the creation of a single upload file.

6. Downloading ARCHived Stops data

ARCHived stops are not published in NaPTAN output files but a list of them may be supplied on request to DfT.

7. Display of Stops Data Status

Information on the number of ARCHived stops will be displayed for management information purposes on the [NaPTAN Last Submissions](#) page, alongside the counts for ACTive, PENding and DELeted stops.

The Department for Transport has actively considered the needs of blind and partially sighted people in accessing this document. The text will be made available in full on the Department's website. The text may be freely downloaded and translated by individuals or organisations for conversion into other accessible formats. If you have other needs in this regard please contact the Department.

Department for Transport
Great Minster House
33 Horseferry Road
London SW1P 4DR
Telephone 0300 330 3000
Website www.gov.uk/dft
General enquiries: <https://forms.dft.gov.uk>



© Crown copyright 2016

Copyright in the typographical arrangement rests with the Crown.

You may re-use this information (not including logos or third-party material) free of charge in any format or medium, under the terms of the Open Government Licence. To view this licence, visit <http://www.nationalarchives.gov.uk/doc/open-government-licence/version/3/> or write to the Information Policy Team, The National Archives, Kew, London TW9 4DU, or e-mail: psi@nationalarchives.gsi.gov.uk

Where we have identified any third-party copyright information you will need to obtain permission from the copyright holders concerned.

Contents

- Foreword 37
- Executive summary 38
- 1. Overtyping chapter title 39
 - Heading 2 39
- 2. Next Chapter 40
 - Heading 2 40

Foreword

Overtyping text below. Or, to import text from another Word document, copy the content to the clipboard and use the Safe paste button on the DFT ribbon.

Body text

Executive summary

Introduction

Please use the single number style (1. Main text) for paras (1, 2 etc.).

- 1 Overtyping text here

1. Overtyping chapter title

Heading 2

1.1 Number 1

2. Next Chapter

Heading 2

2.1 Number 1