



HM Government

OUR PLAN TO REBUILD: The UK Government's COVID-19 recovery strategy

May 2020

CP 239



HM Government

OUR PLAN TO REBUILD:

The UK Government's COVID-19 recovery strategy

Presented to Parliament
by the Prime Minister
by Command of Her Majesty

May 2020

CP 239



© Crown copyright 2020

This publication is licensed under the terms of the Open Government Licence v3.0 except where otherwise stated. To view this licence, visit nationalarchives.gov.uk/doc/open-government-licence/version/3

Where we have identified any third party copyright information you will need to obtain permission from the copyright holders concerned.

This publication is available at www.gov.uk/official-documents

Any enquiries regarding this publication should be sent to us at publiccorrespondence@cabinetoffice.gov.uk.

ISBN 978-1-5286-1911-0

CCS0520577950 05/20

Printed on paper containing 75% recycled fibre content minimum

Printed in the UK by the APS Group on behalf of the Controller of Her Majesty's Stationery Office

Contents

Foreword from the Prime Minister	3
1. The current situation	6
Phase one	6
Moving to the next phase	11
The challenges ahead	12
2. Our aims: saving lives; saving livelihoods	15
Health effect	15
Economic effect	16
Social effect	17
Feasibility	17
Overarching principles	17
3. Our approach: a phased recovery	19
Phase two: smarter controls	20
Regular steps of adjustments to current measures	21
"COVID-19 Secure" guidelines	22
Protecting the most clinically vulnerable people	22
A more differentiated approach to risk	23
Reactive measures	23
Phase three: reliable treatment	23
4. Our roadmap to lift restrictions step-by-step	25
Step One	25
Work	25
Schools	26
Travel	26
Face-coverings	27
Public spaces	27
Protecting the clinically vulnerable	28
Enforcement	29

Parliament.....	29
International travel.....	29
Step Two.....	30
Social and family contact.....	31
Step Three.....	31
5. Fourteen supporting programmes	33
1. NHS and care capacity and operating model.....	33
2. Protecting care homes.....	34
3. Smarter shielding of the most vulnerable.....	36
4. More effective, risk-based targeting of protection measures.....	36
5. Accurate disease monitoring and reactive measures	37
Joint Biosecurity Centre (JBC).....	37
6. Testing and tracing	38
7. Increased scientific understanding.....	40
8. "COVID-19 Secure" guidelines	41
9. Better distancing measures	41
10. Economic and social support to maintain livelihoods and restore the economy	42
11. Treatments and vaccines.....	43
12. International action and awareness	44
13. Public communication, understanding and enforcement	45
14. Sustainable government structures	45
6. How you can help.....	47
A collective effort	47
Lending a hand.....	47
Annex A: Staying safe outside your home	49
Annex B: Summary table: COVID-19 vulnerable groups	51

Foreword from the Prime Minister

We will remember 2020 as the year we were hit, along with all other nations, by a previously unknown and remorseless foe.

Like the rest of the world, we have paid a heavy price. As of 6 May, 30,615 people have lost their lives having tested positive for COVID-19. Every one of those deaths is a tragedy for friends and family: children have lost mothers and fathers; parents have lost sons and daughters, before their time. We should pay tribute to the victims of this virus: those who have died, and their loved ones who remain.

That price could have been higher if not for the extraordinary efforts of our NHS and social care workers and had we not acted quickly to increase the capacity of the NHS. People up and down the UK have made an extraordinary sacrifice, putting their lives on hold and distancing themselves from their loved ones. It would have been higher had we not shielded the most vulnerable - providing help and support to those that need it.

On 3 March we published [our plan](#)¹, and since then millions of hardworking medical, health and care workers, military personnel, shopkeepers, civil servants, delivery and bus drivers, teachers and countless others have diligently and solemnly enacted it.

I said we'd take the right decisions at the right time, based on the science. And I said that the overwhelming priority of that plan was to keep our country safe.

Through the unprecedented action the people of the United Kingdom have taken, we have begun to beat back the virus. Whereas the virus threatened to overwhelm the NHS, our collective sacrifice has meant that at no point since the end of March have we had fewer than one third of our critical care beds free.

We can feel proud of everyone who worked so hard to create Cardiff's Dragon's Heart Hospital, Glasgow's Louisa Jordan Hospital, and the Nightingale Hospitals in London, Belfast, Birmingham, Exeter, Harrogate, Sunderland, Bristol and Manchester. In addition to these new Nightingales, the UK has just over 7,000 critical care beds as of 4 May; an increase from 4,000 at the end of January.

Meanwhile the Government increased daily tests by over 1,000% during April - from 11,041 on 31 March to 122,347 on 30 April. Teachers have worked with Google to create the Oak National Academy - a virtual school - in just two weeks, delivering 2.2 million lessons in its first week of operation. We have supported businesses and workers with a furlough scheme - designed and built from scratch - that has safeguarded 6.3 million jobs. Right across the country we have seen huge ingenuity, drive and selflessness.

¹ <https://www.gov.uk/government/publications/coronavirus-action-plan/coronavirus-action-plan-a-guide-to-what-you-can-expect-across-the-uk>

Now, with every week that passes, we learn more about the virus and understand more about how to defeat it. But the more we learn, the more we realise how little the world yet understands about the true nature of the threat - except that it is a shared one that we must all work together to defeat.

Our success containing the virus so far has been hard fought and hard won. So it is for that reason that we must proceed with the utmost care in the next phase, and avoid undoing what we have achieved.

This document sets out a plan to rebuild the UK for a world with COVID-19. It is not a quick return to 'normality.' Nor does it lay out an easy answer. And, inevitably, parts of this plan will adapt as we learn more about the virus. But it is a plan that should give the people of the United Kingdom hope. Hope that we can rebuild; hope that we can save lives; hope that we can safeguard livelihoods.

It will require much from us all: that we remain alert; that we care for those at most risk; that we pull together as a United Kingdom. We will continue to work with the devolved administrations in Scotland, Wales and Northern Ireland to ensure these outcomes for everybody, wherever they live in the UK.

It is clear that the only feasible long-term solution lies with a vaccine or drug-based treatment. That is why we have helped accelerate this from the start and are proud to be home to two of the world's most promising vaccine development programmes at Oxford University and Imperial College, supported by a globally renowned pharmaceutical sector.

The recent collaboration between Oxford University and AstraZeneca is a vital step that could help rapidly advance the manufacture of a COVID-19 vaccine. It will also ensure that should the vaccine being developed by Oxford's Jenner Institute work, it will be available as early as possible, helping to protect thousands of lives from this disease.

We also recognise that a global problem needs a global solution. This is why the United Kingdom has been at the forefront of the international response to the virus, co-hosting the Coronavirus Global Response Summit on 4 May, pledging £388m in aid funding for research into vaccines, tests and treatment including £250m to the Coalition for Epidemic Preparedness Innovations, the largest contribution of any country.

But while we hope for a breakthrough, hope is not a plan. A mass vaccine or treatment may be more than a year away. Indeed, in a worst-case scenario, we may never find a vaccine. So our plan must countenance a situation where we are in this, together, for the long haul, even while doing all we can to avoid that outcome.

I know the current arrangements do not provide an enduring solution – the price is too heavy, to our national way of life, to our society, to our economy, indeed to our long-term public health. And while it has been vital to arrest the spread of the virus, we know it has taken a heavy toll on society - in particular to the most vulnerable and disadvantaged - and has brought loneliness and fear to many.

We've asked you to protect those you love by separating yourself from them; but we know this has been tough, and that we must avoid this separation from turning into loneliness.

So this plan seeks to return life to as close to normal as possible, for as many people as possible, as fast and fairly as possible, in a way that is safe and continues to protect our NHS.

The overriding priority remains to save lives.

And to do that, we must acknowledge that life will be different, at least for the foreseeable future. I will continue to put your safety first, while trying to bring back the things that are most important in your lives, and seeking to protect your livelihoods.

That means continuing to bolster the NHS and social care system so it can not only cope with the pressures from COVID-19 but also deliver the Government's manifesto commitment to continue improving the quality of non-COVID-19 health and social care.

It means a huge national effort to develop, manufacture and prepare to distribute a vaccine, working with our friends and allies around the world to do so.

It means optimising the social distancing measures we've asked the nation to follow, so that as the threat changes, the measures change as well - doing as much as possible to suppress the epidemic spread, while minimising the economic and social effects.

That will require a widespread system of testing, of tracing and monitoring the spread of the disease, of shielding the most vulnerable, of protecting those in care homes, of securing our borders against its reintroduction, and of re-designing workplaces and public spaces to make them "COVID-19 Secure."

Our NHS is already, rightly, the envy of the world. But we now need to build up the other world-leading systems that will protect us in the months ahead.

I must ask the country to be patient with a continued disruption to our normal way of life, but to be relentless in pursuing our mission to build the systems we need. The worst possible outcome would be a return to the virus being out of control – with the cost to human life, and – through the inevitable re-imposition of severe restrictions – the cost to the economy.

We must stay alert, control the virus, and in doing so, save lives.

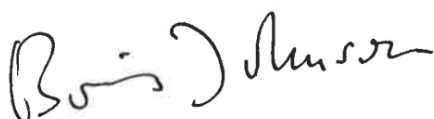
If we get this right we will minimise deaths – not just from COVID-19, but also from meeting all our non-COVID-19 health needs, because our (bigger) NHS will not be overwhelmed.

We will maximise our economic and societal bounce-back: allowing more people to get on with more of their normal lives and get our economy working again.

Then, as vaccines and treatment become available, we will move to another new phase, where we will learn to live with COVID-19 for the longer term without it dominating our lives.

This is one of the biggest international challenges faced in a generation. But our great country has faced and overcome huge trials before. Our response to these unprecedented and unpredictable challenges must be similarly ambitious, selfless and creative.

Thank you for your efforts so far, and for the part everyone in the UK will play over the months ahead.

A handwritten signature in black ink, appearing to read "Boris Johnson". The signature is written in a cursive, flowing style.

1. The current situation

Phase one

COVID-19 is a new and invisible threat. It has spread to almost every country in the world.

The spread of the virus has been rapid. In the UK at its maximum, the number of patients in intensive care was estimated to be doubling every 3-4 days.

This type of exponential growth would have overwhelmed the NHS were it not contained (as shown in Figure 1).

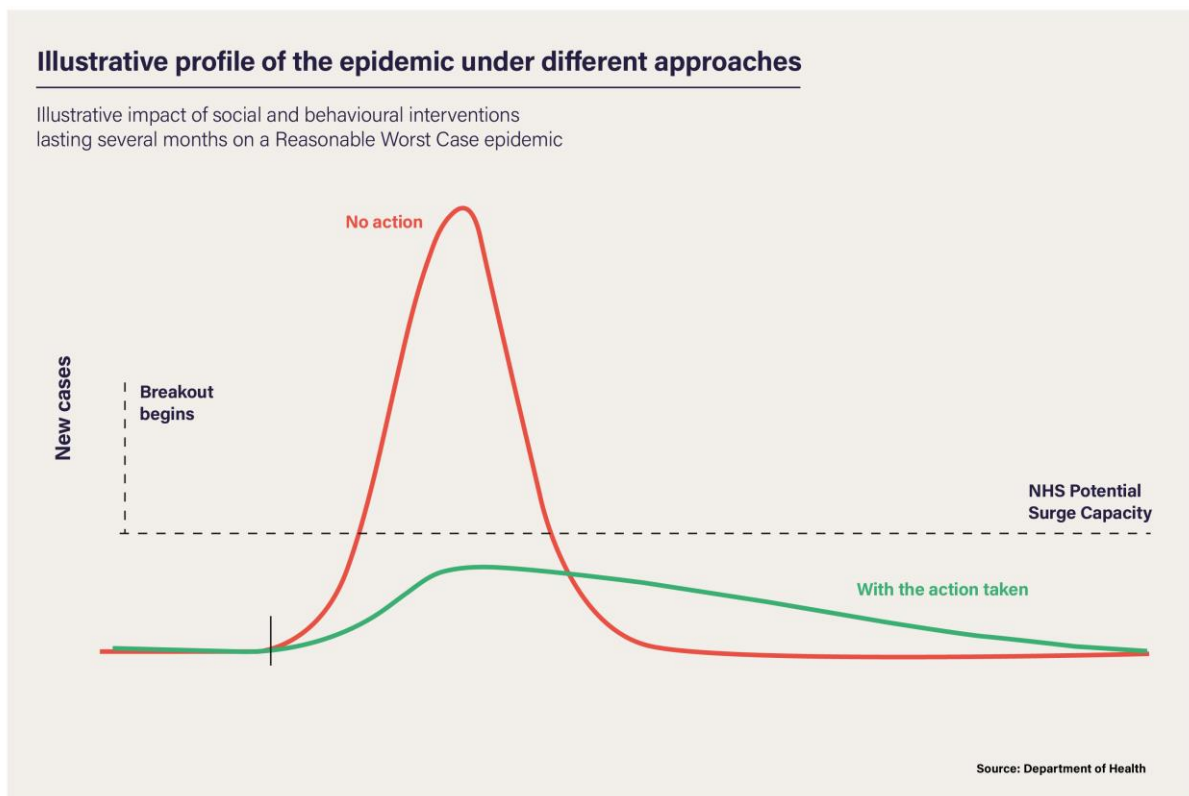


Figure 1: **Illustrative profile of the epidemic under different approaches** Illustrative impact of social and behavioural interventions lasting several months on a Reasonable Worst Case epidemic.

From the start, the Government was guided by science, publishing on 3 March its plan² to contain, delay, and mitigate any outbreak, and use research to inform policy development.

Responding to the advice of Government scientists, on 7 March those with symptoms were asked to self-isolate for 7 days. On 16 March, the Government introduced shielding for the most vulnerable and called on the British public to cease non-essential contact and travel. On 18 March, the Government announced the closure of schools. On 20 March entertainment, hospitality and indoor leisure venues were closed. And on 23 March the Government took decisive steps to introduce the Stay at Home guidance. Working with the devolved administrations, the Government had to take drastic action to protect the NHS and save lives. Delivering this plan was the first phase of the Government's response, and due to the extraordinary sacrifice of the British people and the efforts of the NHS, this first phase has suppressed the spread of the virus.

In an epidemic, one of the most important numbers is R - the reproduction number. If this is below one, then on average each infected person will infect fewer than one other person; the number of new infections will fall over time. The lower the number, the faster the number of new infections will fall. When R is above one, the number of new infections is accelerating; the higher the number the faster the virus spreads through the population.

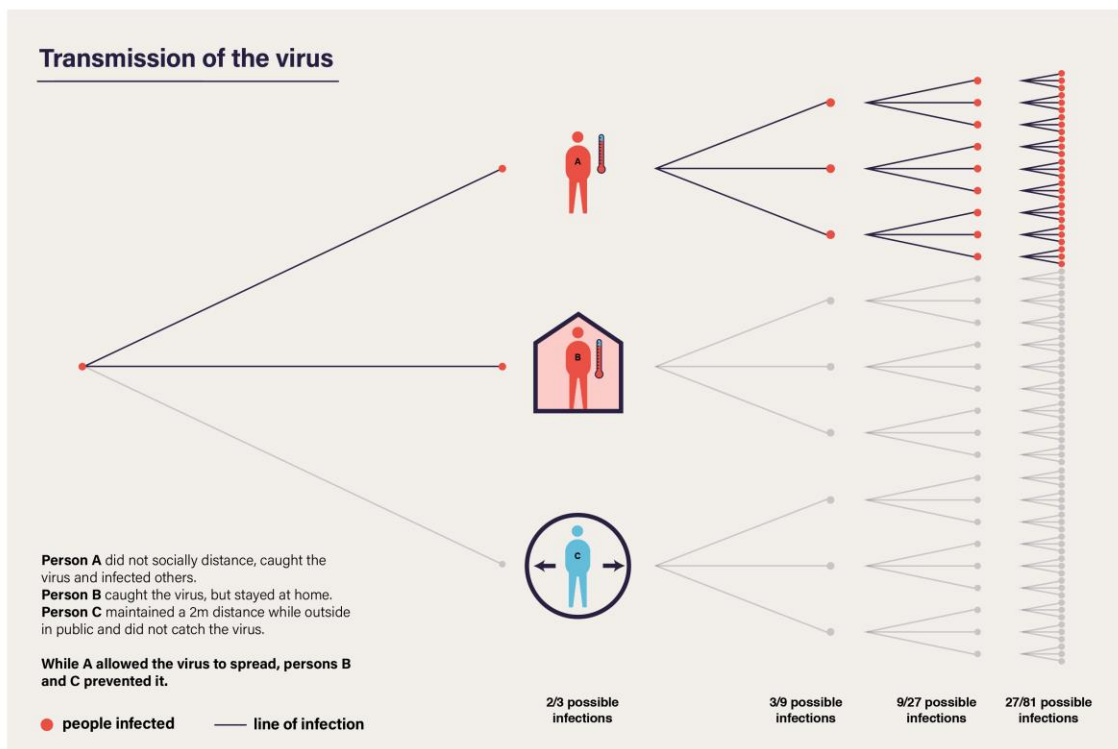


Figure 2: **Transmission of the virus** Schematic diagram of the transmission of the virus with an R value of 3, and the impact of social distancing.

² <https://www.gov.uk/government/publications/coronavirus-action-plan/coronavirus-action-plan-a-guide-to-what-you-can-expect-across-the-uk>

In the UK, the Scientific Advisory Group for Emergencies (SAGE) assessed that R at the beginning of the epidemic was between 2.7 and 3.0; each person with the disease gave it to nearly three other people, on average. But the Government and devolved administration response means SAGE's latest assessment is that, across the UK, R has reduced to between 0.5 and 0.9, meaning that the number of infected people is falling. The impact of social distancing measures on R is demonstrated in Figure 2.

The Government now sees that:

- There are no regions of the country where the epidemic appears to be increasing.
- As of 9 May, it is estimated that 136,000 people in England are currently infected with COVID-19.³
- The number of patients in hospital in the UK with COVID-19 is under 13,500 as of 4 May; 35% below the peak on 12 April.⁴
- 27% of NHS critical care beds in the UK were occupied by a COVID-19 patient on 4 May - compared to 51% on 10 April.⁵

At the same time, the Government has invested heavily in its ability to tackle the disease. NHS capacity has increased significantly, with 3,000 new critical care beds across the UK since January⁶, and daily tests have increased by over 1,000% during April - from 11,041 on 31 March to 122,347 on 30 April.⁷

³ <https://www.ons.gov.uk/peoplepopulationandcommunity/healthandsocialcare/conditionsanddiseases/bulletins/coronaviruscovid19infectionsurvey/england10may2020>

⁴ Source: NHSE (COVID daily sitrep), Scottish Gov, Welsh Gov, NI. Note: For NHS acute trusts with Type 1 A&E only

⁵ Source: NHSE (COVID daily sitrep, A&E daily sitrep), Welsh Gov, Scottish Gov, NI Gov. Different health systems collect this data differently; in Wales critical care beds are taken to be invasive ventilation including surge capacity and both confirmed and suspected COVID-19 cases, in Scotland critical care beds include ICU beds and additional surge capacity. In Northern Ireland, critical care beds includes all adult ICU beds (this is a change to previous reporting). Note: For NHS acute trusts with Type 1 A&E only.

⁶ NHSE (COVID daily sitrep), Scottish Gov, Welsh Gov, NI. Note: For NHS acute trusts with Type 1 A&E only

⁷ <https://www.gov.uk/guidance/coronavirus-covid-19-information-for-the-public>. This data includes tests under Pillars 1 and 2 for March. Our cumulative total of 1,023,824 tests by 30 April compares with 2.5m tests in Germany, 724,000 in France and 640,000 in South Korea (PHE collation of data from national published sources)

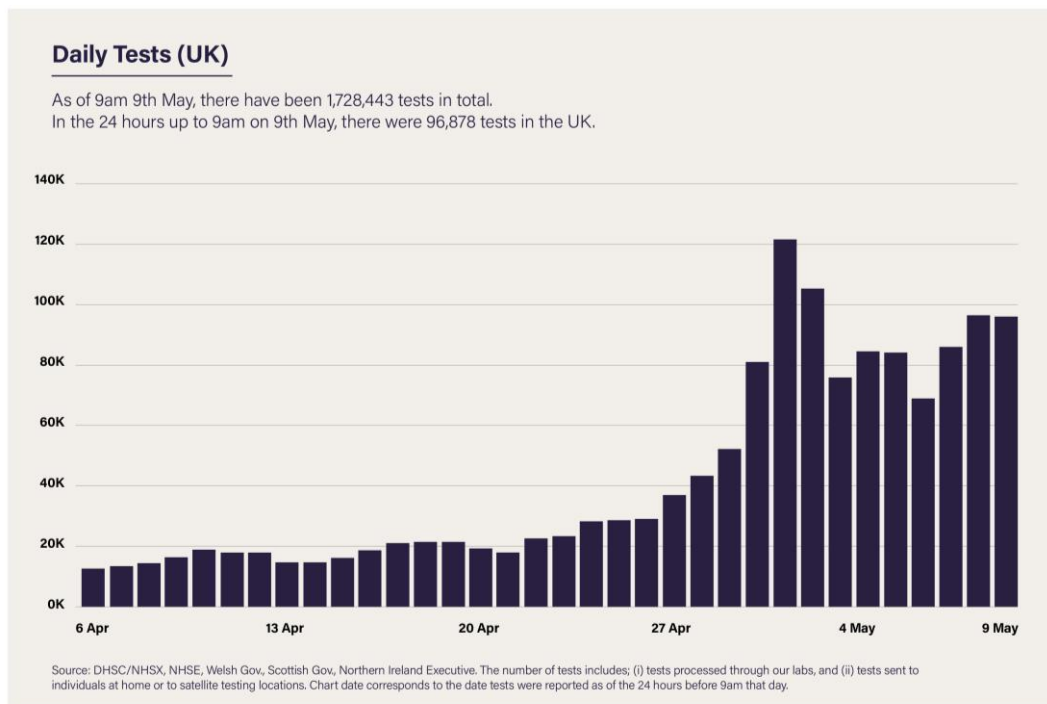


Figure 3: Daily tests (UK) The number of tests carried out in the UK as of 9am on 9 May

Tragically, however, the number of deaths so far this year is 37,151 higher than the average for 2015 to 2019.⁸ The Government is particularly troubled by the impact of COVID-19 in care homes, where the number of COVID-19 deaths registered as taking place up to 24 April is 6,934,⁹ and by the higher proportion of those who have died of COVID-19 who have been from minority ethnic backgrounds. It is critical that the Government understands why this is occurring. It is why on 4 May Public Health England launched a review into the factors affecting health outcomes from COVID-19, to include ethnicity, gender and obesity. This will be published by the end of May.¹⁰

Alongside the social distancing measures the Government has announced in this first phase, it has also taken unprecedented action to support people and businesses through this crisis and minimise deep and long-lasting impacts on the economy. 800,000 employers had applied to the Coronavirus Job Retention Scheme to help pay the wages of 6.3m jobs, as of midnight on 3 May.¹¹

The Office for Budget Responsibility (OBR) and the Bank of England have both been clear that if the Government had not taken the actions they had, the situation would be much worse. But despite this, the impact on people's jobs and livelihoods has been severe: economic activity has been brought to a stop across large swathes of the UK economy. The Government is supporting millions of families and businesses, but cannot protect every job and every business.

⁸ <https://www.ons.gov.uk/peoplepopulationandcommunity/birthsdeathsandmarriages/deaths/datasets/weeklyprovisionalfiguresondeathsregisteredinenglandandwales>;
<https://www.nrscotland.gov.uk/covid19stats>;
<https://www.nisra.gov.uk/publications/weekly-deaths>

⁹ <https://www.ons.gov.uk/peoplepopulationandcommunity/birthsdeathsandmarriages/deaths/datasets/weeklyprovisionalfiguresondeathsregisteredinenglandandwales>

¹⁰ <https://www.gov.uk/government/news/review-into-factors-impacting-health-outcomes-from-covid-19>

¹¹ HMRC, <https://twitter.com/HMRCgovuk/status/1257324798847451136/photo/1>

Unemployment is rising from a 40-year low at the start of the year; around 1.8 million households made claims for Universal Credit between 16 March and 28 April.¹² The OBR has published a 'reference' scenario which suggests that, if the current measures stay in place until June and are then eased over the next three months, unemployment would rise by more than 2 million in the second quarter of 2020.¹³ The OBR's scenario suggests that GDP could fall by 35% in the second quarter of this year – and the annual contraction could be the largest in over 300 years.¹⁴

Workers in those sectors most affected, including hospitality and retail, are more likely to be low paid, younger and female. Younger households are also likely to be disproportionately hit in the longer term, as evidence suggests that, following recessions, lost future earnings potential is greater for young people.¹⁵

The longer the virus affects the economy, the greater the risks of long-term scarring and permanently lower economic activity, with business failures, persistently higher unemployment and lower earnings. This would damage the sustainability of the public finances and the ability to fund public services including the NHS. It would also likely lead to worse long-run physical and mental health outcomes, with a significant increase in the prevalence of chronic illness.

¹² DWP, <https://www.gov.uk/government/publications/universal-credit-declarations-claims-and-advances-management-information>

¹³ OBR, https://obr.uk/docs/dlm_uploads/Coronavirus_reference_scenario_commentary.pdf

¹⁴ OBR, https://obr.uk/docs/dlm_uploads/Coronavirus_reference_scenario_commentary.pdf

¹⁵ IFS, <https://www.ifs.org.uk/publications/14791>

Moving to the next phase

On 16 April the Government presented five tests for easing measures¹⁶. These are:

- 1 Protect the NHS's ability to cope. We must be confident that we are **able to provide sufficient critical care and specialist treatment** right across the UK.
- 2 See a **sustained and consistent fall in the daily death rates** from COVID-19 so we are confident that we have moved beyond the peak.
- 3 Reliable data from SAGE showing that **the rate of infection is decreasing to manageable levels** across the board.
- 4 Be confident that **the range of operational challenges, including testing capacity and PPE, are in hand**, with supply able to meet future demand.
- 5 Be confident that **any adjustments to the current measures will not risk a second peak of infections** that overwhelms the NHS.

The Government's priority is to protect the public and save lives; it will ensure any adjustments made are compatible with these five tests. As set out above, the R is now below 1 – between 0.5 and 0.9 – but potentially only just below 1. The Government has made good progress in satisfying some of these conditions. The ventilated bed capacity of the NHS has increased while the demand placed on it by COVID-19 patients has now reduced (as shown in Figure 4). Deaths in the community are falling. However, real challenges remain on the operational support required for managing the virus. The Government cannot yet be confident that major adjustments now will not risk a second peak of infections that might overwhelm the NHS. Therefore, the Government is only in a position to lift cautiously elements of the existing measures.

¹⁶ FCO, <https://www.gov.uk/government/speeches/foreign-secretarys-statement-on-coronavirus-covid-19-16-april-2020>

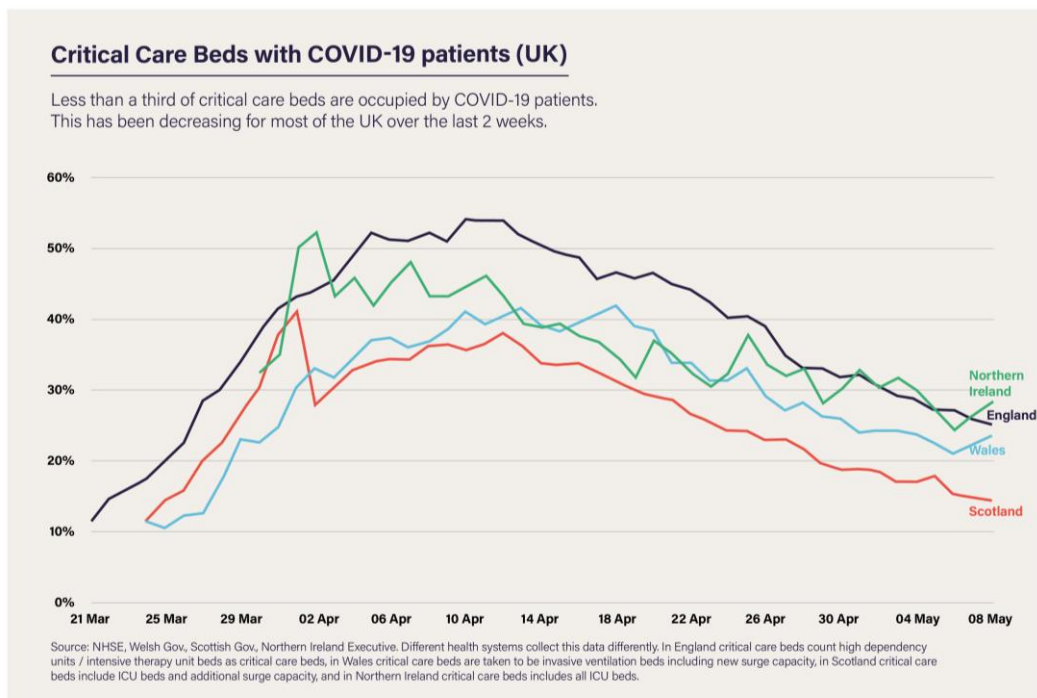


Figure 4: Critical care beds with COVID-19 patients (UK) The percentage of critical care beds with COVID-19 patients up to 8 May.

Different parts of the UK have different R figures. The devolved administrations are making their own assessments about the lifting of measures in Scotland, Wales and Northern Ireland. All governments continue to work together to ensure a coordinated approach across the United Kingdom.

The challenges ahead

As the Government moves into the next phase of its response to the virus, it is important to be clear about the challenges that the UK, in common with other countries around the world, is now facing.

1. **This is not a short-term crisis.** It is likely that COVID-19 will circulate in the human population long-term, possibly causing periodic epidemics. In the near future, large epidemic waves cannot be excluded without continuing some measures.
2. **In the near term, we cannot afford to make drastic changes.** To successfully keep R below 1, we have little room for manoeuvre. SAGE modelling suggests that either fully opening schools or relaxing all social distancing measures now, will lead to a resurgence of the virus and a second wave that could be larger than the first. In a population where most people are lacking immunity, the epidemic would double in size every few days if no control measures were in place.
3. **There is no easy or quick solution.** Only the development of a vaccine or effective drugs can reliably control this epidemic and reduce mortality without some form of social distancing or contact tracing in place. In the medium-term, allowing the virus to spread in an uncontrolled manner until natural population-level immunity is achieved would put the NHS

under enormous pressure. At no point has this been part of the Government's strategy. If vaccines can be developed they have the potential to stop the disease spreading; treatments would be less likely to stop the spread but could make the virus less dangerous.

4. **The country must get the number of new cases down.** Holding R below 1 will reduce the number of new cases down to a level that allows for the effective tracing of new cases; this in turn, will enable the total number of daily transmissions to be held at a low level.
5. **The world's scientific understanding of the virus is still developing rapidly.** We are still learning about who is at greatest personal risk and how the virus is spread. It is not possible to know with precision the relative efficacy of specific shielding and suppression measures; nor how many people in the population are or have been infected asymptotically.
6. **The virus' spread is difficult to detect.** Some people carry the disease asymptotically, which may mean that they can spread the virus without knowing that they are infectious. Those who do develop symptoms often do not show signs of being infected for around five days; a significant proportion of infections take place in this time, particularly in the two days before symptoms start. Even those who are not at risk of significant harm themselves may pose a real risk of inadvertently infecting others. This is why a significant part of the next phase of the Government's response will be to improve its monitoring of and response to new infections.
7. **The Government must prepare for the challenges that the winter flu season will bring.** This will have wide-ranging effects, from impeding any efforts to trace the virus (because so many people without COVID-19 are likely to have symptoms that resemble COVID-19), to increasing the demand for hospital beds.
8. **The plan depends on continued widespread compliance.** So far people have adhered to the measures well, as depicted in Figure 5 below. However, to avoid R tipping above 1 and the epidemic increasing in an uncontrolled manner, very high continued levels of compliance are essential. The risk is an unbalanced one; if the UK tips back into an exponential increase in the spread of the infection, it could quickly get out of control.

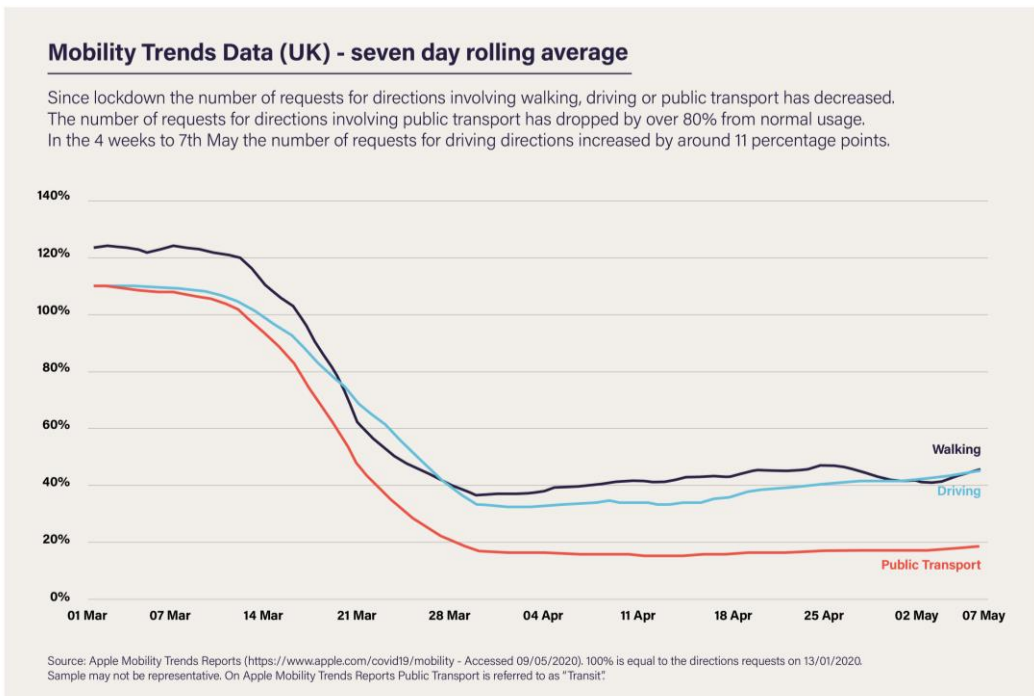


Figure 5: **Mobility trends data for the UK** based on a seven-day rolling average up to 7 May

Reflecting these challenges, the rest of this document sets out a cautious roadmap to ease existing measures in a safe and measured way, subject to successfully controlling the virus and being able to monitor and react to its spread. The roadmap will be kept constantly under review as the epidemic, and the world's understanding of it, develops.

2. Our aims: saving lives; saving livelihoods

The Government's aim has been to save lives. This continues to be the overriding priority at the heart of this plan.

The Government must also seek to minimise the other harms it knows the current restrictive measures are causing - to people's wellbeing, livelihoods, and wider health. But there is a risk that if the Government rushes to reverse these measures, it would trigger a second outbreak that could overwhelm the NHS. So the UK must adapt to a new reality - one where society can return to normal as far as possible; where children can go to school, families can see one another and livelihoods can be protected, while also continuing to protect against the spread of the disease.

Therefore the Government's aim at the centre of this plan is to:

return life to as close to normal as possible, for as many people as possible, as fast and fairly as possible...

... in a way that avoids a new epidemic, minimises lives lost and maximises health, economic and social outcomes.

To do this, the Government will need to steadily redesign the current social distancing measures with new, smarter measures that reflect the level of risk at that point in time, and carefully wind down economic support schemes while people are eased back into work. The Government will do this by considering three main factors.

Health effect

The first consideration is the nation's health.

The Government must consider overall health outcomes, not just those directly caused by COVID-19. As advised by the Chief Medical Officer and NHS England, the Government will take into account:

- **Direct COVID-19 mortality**, those who die from the virus, despite receiving the best medical care.
- **Indirect harms** arising from NHS emergency services being overwhelmed and therefore providing significantly less effective care both for those with COVID-19 and for those with other medical emergencies.

- **Increases in mortality or other ill health as a result of measures we have had to take** including postponement of important but non-urgent medical care and public health programmes while the NHS is diverting resources to manage the epidemic, or from unintended consequences such as people deciding not to seek treatment when they need it, and from increased isolation and effects on mental health;¹⁷ and
- The long-term **health effects of any increase in deprivation** arising from economic impacts, as deprivation is strongly linked to ill health.¹⁸

As with many other respiratory infections, it is impossible to guarantee that nobody will be infected with this virus in the future, or that none of those infections will lead to tragic deaths. However, it is important to be clear that there is no part of this plan that assumes an 'acceptable' level of infection or mortality.

The biggest threat to life remains the risk of a second peak that overwhelms the healthcare system this winter, when it will be under more pressure and the NHS still needs to deliver non-urgent care. A second peak would also trigger a return of the wider health, economic and social harms associated with the first outbreak. This plan aims to minimise this risk.

Economic effect

The second consideration is protecting and restoring people's livelihoods and improving people's living standards.

Ultimately, a strong economy is the best way to **protect people's jobs** and ensure that the Government can fund **the country's vital public services** including the healthcare response. This means the Government will take into account:

- the short-term economic impact, including the number of people who can **return to work where it is safe to do so**, working with businesses and unions to help people go back to workplaces safely;
- the country's **long-term economic future**, which could be harmed by people being out of jobs and by insolvencies, and investing in supporting an economic bounce back;
- the sustainability of **public finances** so the Government can pay for public services and the healthcare response;
- **financial stability** so that the banks and others can continue to provide finance to the economy;
- **the distributional effects**, and so considering carefully the Government's measures on different income and age groups, business sectors and parts of the country.

¹⁷ For example, in England there has been a 53% drop in urgent cancer referrals for the week of 27 April and 20% drop in cancer treatments for the week of 20 April (latest available). (Source: NHS England)

¹⁸ The IFS recently estimated that the fall in employment over the 12 months after the 2008 crisis caused an increase in the prevalence of chronic illnesses in those of working age of around 900,000. The IFS use evidence from Janke et al (2020) which showed that a 1 per cent increase in employment leads to a 2 per cent fall in the prevalence of chronic health conditions among the working age population

The Government also needs to protect the UK's international economic competitiveness. This means, where possible, seeking new economic opportunities, for example for the UK's world-leading pharmaceutical and medical-device manufacturing sectors.

Social effect

The third consideration is the wider effect of the social distancing measures on how the public live their daily lives. The Government recognises that social distancing measures can exacerbate societal challenges, from the negative impacts on people's mental health and feelings of isolation, to the risks of domestic abuse and online fraud. The Government must act to minimise the adverse social costs - both their severity and duration - for the greatest number of people possible. This means the Government will take into account:

- the **number of days of education** children lose;
- the **fairness** of any actions the Government takes, especially the impact on those most affected by social distancing measures; and
- the importance of maintaining the strength of the **public services and civic organisations** on which the UK relies, especially those that protect or support society's most vulnerable.

Feasibility

Underpinning these three factors is a crucial practical constraint: considering the risk and feasibility of any action the Government undertakes. This includes considering the technological risk of any courses the Government pursues, the timelines to implement novel technologies, and the Government's ability to work with global partners. Much of what is desirable is not yet possible. So the Government's plan considers carefully when and where to take risk. A 'zero risk' approach will not work in these unprecedented times. The Government will have to invest in experimental technologies, some of which are likely not to work as intended, or even prove worthless. But waiting for complete certainty is not an option.

Overarching principles

Underpinning the factors above are some guiding principles:

- (1) **Informed by the science.** The Government will continue to be guided by the best scientific and medical advice to ensure that it does the right thing at the right time.
- (2) **Fairness.** The Government will, at all times, endeavour to be fair to all people and groups.
- (3) **Proportionality.** The Government will ensure that all measures taken to control the virus are proportional to the risk posed, in terms of the social and economic implications.
- (4) **Privacy.** The Government will always seek to protect personal privacy and be transparent with people when enacting measures that, barring this once-in-a-century event, would never normally be considered.

- (5) **Transparency.** The Government will continue to be open with the public and parliamentarians, including by making available the relevant scientific and technical advice. The Government will be honest about where it is uncertain and acting at risk, and it will be transparent about the judgements it is making and the basis for them.

In meeting these principles, the UK Government will work in close cooperation with the devolved administrations in Scotland, Wales and Northern Ireland to make this a UK-wide response: coherent, coordinated and comprehensive. Part of that UK wide approach will be acknowledging that the virus may be spreading at different speeds in different parts of the UK. Measures may need to change in different ways and at different times. For advice, please see guidance set by the Northern Ireland Executive, the Scottish Government and the Welsh Government.

Balancing the different considerations will involve some difficult choices. For example, the Government will face a choice between the extent and speed of the freedoms enjoyed by some lower-risk people and the risk to others: if all people at lower personal risk were allowed to resume their lives exactly as before the outbreak, this would increase the level of risk to those that are more vulnerable.

3. Our approach: a phased recovery

As the UK exits phase one of the Government's response, where the Government has sought to contain, delay, research and mitigate, it will move through two further phases.

Phase two: Smarter controls

Until the UK can reach phase three, the Government will gradually replace the existing social restrictions with smarter measures that balance its aims as effectively as possible.

The Government will enact measures that have the largest effect on controlling the epidemic but the lowest health, economic and social costs.

These will be developed and announced in periodic 'steps' over the coming weeks and months, seeking to maximise the pace at which restrictions are lifted, but with strict conditions to move from each step to the next. The Government will maintain options to react to a rise in transmissions, including by reimposing restrictions if required.

Over time, the Government will improve the effectiveness of these measures and introduce more reactive or localised measures through widespread, accurate monitoring of the disease. That will enable the lifting of more measures for more people, at a faster pace. Meanwhile, the Government will continue to increase NHS and social care capacity to ensure care for all COVID-19 patients while restoring 'normal' healthcare provision.

Phase three: Reliable treatment

Eradication of the virus from the UK (and globally) is very unlikely. But rolling out effective treatments and/or a vaccine will allow us to move to a phase where the effect of the virus can be reduced to manageable levels.

To bring about this phase as quickly as possible, the Government is investing in research, developing international partnerships and putting in place the infrastructure to manufacture and distribute treatments and/or a vaccine at scale.

Phase two: smarter controls

Throughout this phase, people will need to minimise the spread of the disease through continuing good hygiene practices: hand washing, social distancing and regular disinfecting of surfaces touched by others. These will be in place for some time.

The number of social contacts people make each day must continue to be limited, the exposure of vulnerable groups must continue to be reduced from normal levels, and symptomatic and diagnosed individuals will still need to isolate.

Over time, social contact will be made less infectious by:

- **making such contact safer** (including by redesigning public and work spaces, and those with symptoms self-isolating) to reduce the chance of infection per contact;
- **reducing infected people's social contact** by using testing, tracing and monitoring of the infection to better focus restrictions according to risk; and
- **stopping hotspots developing** by detecting infection outbreaks at a more localised level and rapidly intervening with targeted measures.

In the near term, the degree of social contact within the population continues to serve as a proxy for the transmission of the virus; the fewer contacts, the lower the risk.

Developing smarter social distancing measures will mean the Government needs to balance increasing contacts as it relaxes the most disruptive measures with introducing new measures to manage risk, for example by tightening other measures. The more contacts in one area - for example, if too many people return to physical workplaces - the fewer are possible elsewhere - for example, not as many children can return to school. The lower the level of infection at each point in time, the more social contact will be possible.

Regular steps of adjustments to current measures

Over the coming months, the Government will therefore introduce a range of adjustments to current social distancing controls, timing these carefully according to both the current spread of the virus and the Government's ability to ensure safety. These will happen in "steps," as set out in the next chapter, with strict conditions to safely move from each step to the next.

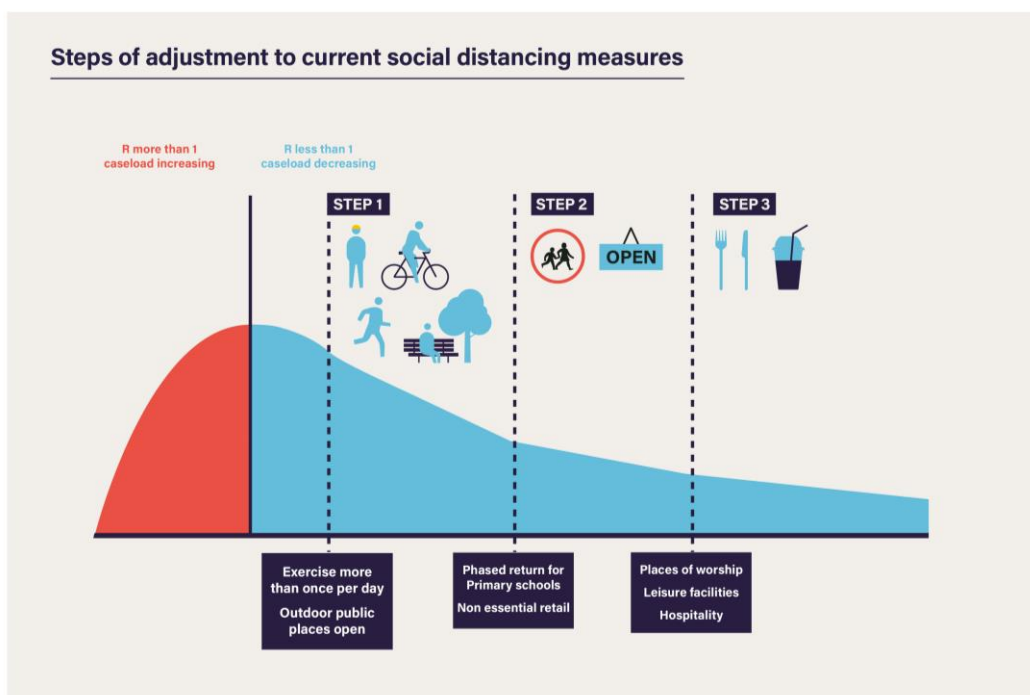


Figure 6: **Steps of adjustment to current social distancing measures** As the caseload falls, different steps can be taken to adjust social distancing measures.

Each step may involve adding new adjustments to the existing restrictions or taking some adjustments further (as shown in Figure 6). For example, while reopening outdoor spaces and activities (subject to continued social distancing) comes earlier in the roadmap because the risk of transmission outdoors is significantly lower, it is likely that reopening indoor public spaces and leisure facilities (such as gyms and cinemas), premises whose core purpose is social interaction (such as nightclubs), venues that attract large crowds (like sports stadia), and personal care establishments where close contact is inherent (like beauty salons) may only be fully possible significantly later depending on the reduction in numbers of infections.

The next chapter sets out an indicative roadmap, but the precise timetable for these adjustments will depend on the infection risk at each point, and the effectiveness of the Government's mitigation measures like contact tracing.

Over the coming weeks and months, the Government will monitor closely the effect of each adjustment, using the effect on the epidemic to gauge the appropriate next step.

Initially, the gap between steps will need to be several weeks, to allow sufficient time for monitoring. However, as the national monitoring systems become more precise and larger-scale, enabling a quicker assessment of the changes, this response time may reduce.

Restrictions may be adjusted by the devolved administrations at a different pace in Scotland, Wales and Northern Ireland because the level of infection - and therefore the risk - will differ. Similarly in England, the Government may adjust restrictions in some regions before others: a greater risk in Cornwall should not lead to disproportionate restrictions in Newcastle if the risk is lower.

"COVID-19 Secure" guidelines

Many measures require the development of new safety guidelines that set out how each type of physical space can be adapted to operate safely. The Government has been consulting relevant sectors, industry bodies, local authorities, trades unions, the Health and Safety Executive and Public Health England on their development and will release them this week.

They will also include measures that were unlikely to be effective when the virus was so widespread that full stay-at-home measures were required, but that may now have some effect as the public increase the number of social contacts - including, for example, advising the use of face coverings in enclosed public areas such as on public transport and introducing stricter restrictions on international travellers.

Many businesses across the UK have already been highly innovative in developing new, durable ways of doing business, such as moving online or adapting to a delivery model. Many of these changes, like increased home working, have significant benefits, for example, reducing the carbon footprint associated with commuting. The Government will need to continue to ask all employers and operators of communal spaces to be innovative in developing novel approaches; UK Research and Innovation (UKRI) will welcome grant applications for proposals to develop new technologies and approaches that help the UK mitigate the impact of this virus.

Protecting the most clinically vulnerable people

Some people have received a letter from the NHS, their clinician or their GP telling them that as a result of having certain medical conditions, they are considered to be **clinically extremely vulnerable**.¹⁹ Throughout this period, the Government will need to continue an extensive programme of shielding for this group while the virus continues to circulate.²⁰ The Government will also have to adjust its protections for other vulnerable locations like prisons and care homes,²¹ based on an understanding of the risk.

Those in the clinically extremely vulnerable cohort will continue to be advised to shield themselves for some time yet, and the Government recognises the difficulties this brings for those affected. Over the coming weeks, the Government will continue to introduce more support and assistance for these individuals so that they have the help they need as they stay shielded. And the Government will bring in further measures to support those providing the shield - for example, continuing to prioritise care workers for testing and protective equipment.

¹⁹ Advice for those who are extremely clinically vulnerable and who must shield themselves can be found here: <https://www.gov.uk/government/publications/guidance-on-shielding-and-protecting-extremely-vulnerable-persons-from-covid-19/guidance-on-shielding-and-protecting-extremely-vulnerable-persons-from-covid-19>

²⁰ <https://www.gov.uk/government/publications/guidance-on-shielding-and-protecting-extremely-vulnerable-persons-from-covid-19/guidance-on-shielding-and-protecting-extremely-vulnerable-persons-from-covid-19>

²¹ <https://www.gov.uk/government/publications/coronavirus-covid-19-adult-social-care-action-plan>

A more differentiated approach to risk

As the UK moves into phase two, the Government will continue to recognise that not everybody's or every group's risk is the same; the level of threat posed by the virus varies across the population, in ways the Government currently only partly understands.

As the Government learns more about the disease and the risk factors involved, it expects to steadily make the risk-assessment more nuanced, giving confidence to some previously advised to shield that they may be able to take more risk; and identifying those who may wish to be more cautious. The Government will need to consider both risk to self, and risk of transmitting to others.

It is vital that those who are showing symptoms, however mild, must continue to self-isolate at home, as now, and that the household quarantine rules continue to apply. However, as the Government increases the availability and speed of swab testing it will be able to confirm more quickly whether suspected cases showing symptoms have COVID-19 or not. This will reduce the period of self-isolation for those who do not have COVID-19 and their household members.

The Government also anticipates targeting future restrictions more precisely than at present, where possible, for example relaxing measures in parts of the country that are lower risk, but continuing them in higher risk locations when the data suggests this is warranted. For example, it is likely that over the coming months there may be local outbreaks that will require reactive measures to be implemented reactively to maintain control of transmission.

Reactive measures

If the data suggests the virus is spreading again, the Government will have to tighten restrictions, possibly at short notice. The aim is to avoid this by moving gradually and by monitoring carefully the effect of each step the Government takes.

The scientific advice is clear that there is scope to go backwards; as restrictions are relaxed, if people do not stay alert and diligently apply those still in place, transmissions could increase, R would quickly tip above one, and restrictions would need to be re-imposed.

Phase three: reliable treatment

Humanity has proved highly effective at finding medical countermeasures to infectious diseases, and is likely to do so for COVID-19; but this may take time. As quickly as possible, the Government must move to a more sustainable solution, where the continued restrictions described above can be lifted altogether. To enable this, the Government must develop, trial, manufacture and distribute reliable treatments or vaccines as swiftly as possible.

The virus is unlikely to die out spontaneously; nor is it likely to be eradicated. Only one human infectious disease - smallpox - has ever been eradicated. The Government must therefore develop either a treatment that enables us to manage it like other serious diseases or have people acquire immunity by vaccination.

It is possible a safe and effective vaccine will not be developed for a long time (or even ever), so while maximising the chances this will happen quickly where the Government can, it must not rely on this course of action happening. There are currently over 70 credible vaccine development programmes worldwide and the first UK human trial has begun at the University of Oxford.

Even if it is not possible to develop an effective vaccine, it may be possible to develop drug treatments to reduce the impact of contracting COVID-19, as has been done for many other infectious diseases, ranging from other pneumonias and herpes infections, to HIV and malaria.

For example, drugs might treat the virus itself and prevent disease progression, be used to limit the risk of being infected, or be used in severe cases to prevent progression to severe disease, shorten time in intensive care and reduce the chance of dying.

Researchers may find some effective treatments imminently – for example from repurposing existing drugs – or might not do so for a long time. Not all treatments that have an effect will be game-changing; the best scientific advice is that it is likely any drugs that substantially reduce mortality or are protective enough to change the course of the epidemic will have to be designed and developed specifically for COVID-19, and that this will take time, with success not guaranteed.

However, notwithstanding that many of these will fail, the economic and societal benefits of success mean the Government will do all it can to develop and roll-out both treatments and vaccines at the fastest possible rate; the second phase is a means of managing things until the UK reaches this point.

4. Our roadmap to lift restrictions step-by-step

The Government has a carefully planned timetable for lifting restrictions, with dates that should help people to plan. This timetable depends on successfully controlling the spread of the virus; if the evidence shows sufficient progress is not being made in controlling the virus then the lifting of restrictions may have to be delayed.

We cannot predict with absolute certainty what the impact of lifting restrictions will be. If, after lifting restrictions, the Government sees a sudden and concerning rise in the infection rate then it may have to re-impose some restrictions. It will seek to do so in as limited and targeted a way as possible, including reacting by re-imposing restrictions in specific geographic areas or in limited sectors where it is proportionate to do so.

Step One

The changes to policy in this step will apply from Wednesday 13 May in England. As the rate of infection may be different in different parts of the UK, this guidance should be considered alongside local public health and safety requirements for Scotland, Wales and Northern Ireland.

Work

For the foreseeable future, workers should continue to work from home rather than their normal physical workplace, wherever possible. This will help minimise the number of social contacts across the country and therefore keep transmissions as low as possible. All those who work are contributing taxes that help pay for the healthcare provision on which the UK relies. People who are able to work at home make it possible for people who have to attend workplaces in person to do so while minimising the risk of overcrowding on transport and in public places.

All workers who cannot work from home should travel to work if their workplace is open. Sectors of the economy that are allowed to be open should be open, for example this includes food production, construction, manufacturing, logistics, distribution and scientific research in laboratories. The only exceptions to this are those workplaces such as hospitality and non-essential retail which during this first step the Government is requiring to remain closed.²²

As soon as practicable, workplaces should follow the new “COVID-19 Secure” guidelines, as set out in the previous chapter, which will be published this week. These will ensure the risk of infection is as low as possible, while allowing as many people as possible to resume their livelihoods.

²² <https://www.gov.uk/government/publications/further-businesses-and-premises-to-close/further-businesses-and-premises-to-close-guidance>

It remains the case that **anyone who has symptoms, however mild, or is in a household where someone has symptoms, should not leave their house** to go to work. Those people should self-isolate, as should those in their households.

Schools

The rate of infection remains too high to allow the reopening of schools for all pupils yet. However, it is important that vulnerable children (including children in need, those with an Education, Health and Care plan and those assessed as otherwise vulnerable by educational providers or local authorities)²³ and the children of critical workers are able to attend school, as is currently permitted. Approximately 2% of children are attending school in person²⁴, although all schools are working hard to deliver lessons remotely.

But there is a large societal benefit from vulnerable children, or the children of critical workers, attending school: local authorities and schools should therefore **urge more children who would benefit from attending in person to do so**.

The Government is also amending its guidance to clarify that paid childcare, for example nannies and childminders, can take place subject to being able to meet the public health principles at Annex A, because these are roles where working from home is not possible. This should enable more working parents to return to work.

Travel

While most journeys to work involve people travelling either by bike, by car or on foot, public transport takes a significant number of people to work across the country, but particularly in urban centres and at peak times. As more people return to work, the number of journeys on public transport will also increase. This is why the Government is working with public transport providers to bring services back towards pre-COVID-19 levels as quickly as possible. This roadmap takes the impact on public transport into account in the proposed phased easing of measures.

When travelling **everybody (including critical workers) should continue to avoid public transport wherever possible**. If they can, people should instead choose to cycle, walk or drive, to minimise the number of people with whom they come into close contact. It is important many more people can easily travel around by walking and cycling, so the Government will increase funding and provide new statutory guidance to encourage local authorities to widen pavements, create pop-up cycle lanes, and close some roads in cities to traffic (apart from buses) as some councils are already proposing.

Social distancing guidance on public transport must be followed rigorously. As with workplaces, transport operators should follow appropriate guidance to make their services COVID-19 Secure; this will be published this week.

²³ <https://www.gov.uk/government/publications/closure-of-educational-settings-information-for-parents-and-carers/closure-of-educational-settings-information-for-parents-and-carers>

²⁴ [Coronavirus \(COVID-19\): attendance in education and early years settings](#)

Face-coverings

As more people return to work, there will be more movement outside people's immediate household. This increased mobility means the Government is now advising that people should aim to wear a face-covering in enclosed spaces where social distancing is not always possible and they come into contact with others that they do not normally meet, for example on public transport or in some shops. Homemade cloth face-coverings **can help reduce the risk of transmission in some circumstances**. Face-coverings are not intended to help the wearer, but to protect against inadvertent transmission of the disease to others if you have it asymptotically.

A face covering is not the same as a facemask such as the surgical masks or respirators used as part of personal protective equipment by healthcare and other workers. These supplies must continue to be reserved for those who need it. Face-coverings should not be used by children under the age of two, or those who may find it difficult to manage them correctly, for example primary age children unassisted, or those with respiratory conditions. It is important to use face-coverings properly and wash your hands before putting them on and taking them off.²⁵

Public spaces

SAGE advise that the risk of infection outside is significantly lower than inside, so the Government is updating the rules so that, as well as exercise, **people can now also spend time outdoors** subject to: not meeting up with any more than one person from outside your household; continued compliance with social distancing guidelines to remain two metres (6ft) away from people outside your household; good hand hygiene, particularly with respect to shared surfaces; and those responsible for public places being able to put appropriate measures in place to follow the new COVID-19 Secure guidance.

People may **exercise outside as many times each day as they wish**. For example, this would include angling and tennis. You will still not be able to use areas like playgrounds, outdoor gyms or ticketed outdoor leisure venues, where there is a higher risk of close contact and touching surfaces. You can only exercise with up to one person from outside your household – this means you should not play team sports, except with members of your own household.

People may drive to outdoor open spaces irrespective of distance, so long as they respect social distancing guidance while they are there, because this does not involve contact with people outside your household.

When travelling to outdoor spaces, it is important that people respect the rules in Scotland, Wales and Northern Ireland and **do not travel to different parts of the UK** where it would be inconsistent with guidance or regulations issued by the relevant devolved administration.

These measures may come with some risk; it is important that everyone continues to act responsibly, as the large majority have done to date. The infection rate will increase if people begin to break these rules and, for example, mix in groups in parks, which will trigger the need for further restrictions.

²⁵ ANNEX A: Staying Safe Outside Your Home

Protecting the clinically vulnerable

It remains the case that some people are more clinically vulnerable to COVID-19 than others. These include those aged over 70, those with specific chronic pre-existing conditions and pregnant women.²⁶ **These clinically vulnerable people should continue to take particular care to minimise contact with others outside their households, but do not need to be shielded.**

Those in the clinically extremely vulnerable group **are strongly advised to stay at home at all times and avoid any face-to-face contact**; this is called 'shielding'. It means not leaving the house or attending gatherings at all, with very limited exceptions. **Annex B** sets out more detail on the guidance applicable to different vulnerable groups at this time.

The Government knows people are taking shielding advice seriously and is acutely aware of the huge commitment and resolve it requires to keep away from family and friends. Unfortunately, the current level of transmission of the virus is such that the Government needs to continue to ask that the guidance is followed. In recognition of the challenge faced by those shielding, the Government is:

- **Providing essential food to those unable to leave their home.** Over one million food boxes have now been delivered in England by wholesalers to those shielding who asked for help with food, with hundreds of thousands more to follow in the coming weeks.²⁷ The Government has also arranged priority access to supermarket deliveries for those who have said they need it.
- **Facilitating volunteer support.** Up to 200,000 calls a day have been made to the shielded in England to confirm their support needs,²⁸ and councils are helping to support them in other ways - including, in some cases, organising regular calls from volunteers to those isolated. Those who are shielding can also directly request the support of NHS Volunteer Responders.

The Government is also aware that when – in time – other members of society return to aspects of their normal daily lives, the challenge for those being asked to shield may deepen. The Government will continue to review the support needs of those shielding and the Government will continue to provide support to individuals for as long as they need its direct help.

Along with the support the Government is providing to those shielding, it will provide vital support for other vulnerable people, such as those at risk of loneliness. The Government is continuing to work to further support these groups, including by providing vital financial support to frontline charities working in these areas. The [GOV.UK](https://www.gov.uk) website provides information about the huge range of support that is available including from local authorities and the voluntary and community sector. The Government will continue to update [GOV.UK](https://www.gov.uk) as new services and support become available.

As the UK recovers, the Government will ensure people with disabilities can have independent lives and are not marginalised. This will include making sure that they can access public services and will consider their needs as the Government creates safe work environments and reopen the transport system. The Government will ensure their overall health outcomes do not suffer disproportionately.

²⁶ The list of those who are clinically vulnerable can be found here:

<https://www.gov.uk/government/publications/full-guidance-on-staying-at-home-and-away-from-others/full-guidance-on-staying-at-home-and-away-from-others#eel-decline>

²⁷ The Ministry of Housing, Communities and Local Government

²⁸ The Ministry of Housing, Communities and Local Government

Enforcement

The Government is examining more stringent enforcement measures for non-compliance, as it has seen in many other countries. The Government will impose higher fines to reflect the increased risk to others of breaking the rules as people are returning to work and school. The Government will seek to make clearer to the public what is and is not allowed.

Parliament

It is vital that Parliament can continue to scrutinise the Government, consider the Government's ambitious legislative agenda and legislate to support the COVID-19 response. Parliament must set a national example of how business can continue in this new normal; and it must move, in step with public health guidance, to get back to business as part of this next step, including a move towards further physical proceedings in the House of Commons.

International travel

As the level of infection in the UK reduces, and the Government prepares for social contact to increase, it will be important to manage the risk of transmissions being reintroduced from abroad.

Therefore, in order to keep overall levels of infection down and in line with many other countries, the Government will introduce a series of measures and restrictions at the UK border. This will contribute to keeping the overall number of transmissions in the UK as low as possible. First, alongside increased information about the UK's social distancing regime at the border, the Government will require all international arrivals to supply their contact and accommodation information. They will also be strongly advised to download and use the NHS contact tracing app.

Second, the Government will require all international arrivals not on a short list of exemptions to self-isolate in their accommodation for fourteen days on arrival into the UK. Where international travellers are unable to demonstrate where they would self-isolate, they will be required to do so in accommodation arranged by the Government. The Government is working closely with the devolved administrations to coordinate implementation across the UK.

Small exemptions to these measures will be in place to provide for continued security of supply into the UK and so as not to impede work supporting national security or critical infrastructure and to meet the UK's international obligations. All journeys within the Common Travel Area will also be exempt from these measures.

These international travel measures will not come into force on 13 May but will be introduced as soon as possible. Further details, and guidance, will be set out shortly, and the measures and list of exemptions will be kept under regular review.

Step Two

The content and timing of the second stage of adjustments will depend on the most up-to-date assessment of the risk posed by the virus. The five tests set out in the first chapter must justify changes, and they must be warranted by the current alert level.

They will be enabled by the programmes set out in the next chapter and, in particular, by continuing to bolster test and trace capabilities, protect care homes and support the clinically extremely vulnerable. It is possible that the dates set out below will be delayed if these conditions are not met. Changes will be announced at least 48 hours before coming into effect.

To aid planning, the Government's current aim is that the second step will be made no earlier than Monday 1 June, subject to these conditions being satisfied. Until that time the restrictions currently in place around the activities below will continue.

The Government will work with the devolved administrations to ensure that the changes for step two and beyond are coordinated across the UK. However, there may be circumstances where different measures will be lifted at different times depending on the variance in rate of transmission across the UK.

The current planning assumption for England is that the second step may include as many of the following measures as possible, consistent with the five tests. Organisations should prepare accordingly.

- **A phased return for early years settings and schools.** Schools should prepare to begin to open for more children from 1 June. The Government expects children to be able to return to early years settings, and for Reception, Year 1 and Year 6 to be back in school in smaller sizes, from this point. This aims to ensure that the youngest children, and those preparing for the transition to secondary school, have maximum time with their teachers. Secondary schools and further education colleges should also prepare to begin some face to face contact with Year 10 and 12 pupils who have key exams next year, in support of their continued remote, home learning. The Government's ambition is for all primary school children to return to school before the summer for a month if feasible, though this will be kept under review. The Department of Education will engage closely with schools and early years providers to develop further detail and guidance on how schools should facilitate this.
- **Opening non-essential retail** when and where it is safe to do so, and subject to those retailers being able to follow the new COVID-19 Secure guidelines. The intention is for this to happen in phases from 1 June; the Government will issue further guidance shortly on the approach that will be taken to phasing, including which businesses will be covered in each phase and the timeframes involved. All other sectors that are currently closed, including hospitality and personal care, are not able to re-open at this point because the risk of transmission in these environments is higher. The opening of such sectors is likely to take place in phases during step three, as set out below.
- **Permitting cultural and sporting events to take place behind closed-doors** for broadcast, while avoiding the risk of large-scale social contact.
- **Re-opening more local public transport in urban areas, subject to strict measures** to limit as far as possible the risk of infection in these normally crowded spaces.

Social and family contact

Since 23 March the Government has asked people to only leave the house for very limited purposes and this has been extraordinarily disruptive to people's lives.

In particular this has affected the isolated and vulnerable, and those who live alone. As restrictions continue, the Government is considering a range of options to reduce the most harmful social effects to make the measures more sustainable.

For example, the Government has asked SAGE to examine whether, when and how it can safely change the regulations to **allow people to expand their household group to include one other household** in the same exclusive group.²⁹

The intention of this change would be to allow those who are isolated some more social contact, and to reduce the most harmful effects of the current social restrictions, while continuing to limit the risk of chains of transmission. It would also support some families to return to work by, for example, allowing two households to share childcare.³⁰

This could be based on the New Zealand model of household "bubbles" where a single "bubble" is the people you live with.³¹ As in New Zealand, the rationale behind keeping household groups small is to limit the number of social contacts people have and, in particular, to limit the risk of inter-household transmissions.³²

In addition, the Government is also examining how to enable people to gather in slightly larger groups to better facilitate small weddings.

Over the coming weeks, the Government will engage on the nature and timing of the measures in this step, in order to consider the widest possible array of views on how best to balance the health, economic and social effects.

Step Three

The next step will also take place when the assessment of risk warrants further adjustments to the remaining measures. The Government's current planning assumption is that this step will be no earlier than 4 July, subject to the five tests justifying some or all of the measures below, and further detailed scientific advice, provided closer to the time, on how far we can go.

The ambition at this step is to **open at least some of the remaining businesses and premises that have been required to close, including personal care** (such as hairdressers and beauty salons) **hospitality** (such as food service providers, pubs and accommodation), **public places** (such as places of worship) and **leisure facilities** (like cinemas). They should also meet the COVID-19 Secure guidelines. Some venues which are, by design, crowded and where it may prove difficult to enact distancing may still not be able to re-open safely at this point, or may be

²⁹ It is not OK to be in multiple household groups: if Household A merges with B, Household B cannot also elect to be in a group with Household C. This would create a chain that would allow the virus to spread widely

³⁰ The potential effects of this change on the rate of transmission are to be examined.

³¹ <https://covid19.govt.nz/alert-system/alert-level-3/>

³² This concept is explained in this 'building your bubble' explainer from the New Zealand Government: <https://www.health.govt.nz/our-work/diseases-and-conditions/covid-19-novel-coronavirus/covid-19-novel-coronavirus-health-advice-general-public/managing-your-bubble-during-covid-19>

able to open safely only in part. Nevertheless the Government will wish to open as many businesses and public places as the data and information at the time allows.

In order to facilitate the fastest possible re-opening of these types of higher-risk businesses and public places, the Government will carefully phase and pilot re-openings to test their ability to adopt the new COVID-19 Secure guidelines. The Government will also monitor carefully the effects of re-opening other similar establishments elsewhere in the world, as this happens. The Government will establish a series of taskforces to work closely with stakeholders in these sectors to develop ways in which they can make these businesses and public places COVID-19 Secure.

5. Fourteen supporting programmes

To deliver our phased plan, the Government will deliver fourteen programmes of work, all of which are ambitious in their scope, scale and timeframes.

1. NHS and care capacity and operating model

First, to maximise its confidence in managing new cases, the Government needs to continue to secure NHS and care capacity, and put it on a sustainable footing.

This includes ensuring staff are protected by the appropriate personal protective equipment (PPE), in all NHS and care settings.

This has required a new Industrial Strategy for PPE. Since the start of the outbreak, the Government, working with the NHS, industry and the Armed Forces, has delivered over 1.16bn pieces of PPE to the front line. On 6 May, over 17 million PPE items were delivered to 258 trusts and organisations. Through its UK-wide approach, the Government is working closely with the devolved administrations to support and co-ordinate the distribution of PPE across the UK: millions of PPE items have been delivered to Northern Ireland, Scotland and Wales. But there remains much more to do and under the leadership of Lord Deighton, the Government will:

- **Expand supply from overseas.** The Government has already set up a cross-government PPE sourcing unit, now staffed by over 400 people, to secure new supply lines from across the world and has published rigorous standards against which purchases will be made. The Government is working urgently to identify new sources of critical PPE from overseas markets, diversifying the UK's sources of supply and strengthening the UK's supply chains for the long term. DIT and FCO teams in posts around the world are seeking new supplies, lobbying governments to lift export restrictions and helping get crucial deliveries back to the UK.
- **Improve domestic manufacturing capability.** Lord Deighton is leading the Government effort to unleash the potential of British industry to manufacture PPE for the health and social care sectors. This will build on the manufacturing opportunities the Government has already identified and contribute to the national effort to meet the unprecedented demand. The Government is also working to support the scale-up of engineering efforts for small companies capable of contributing to supplies. The Government is currently in contact with over 200 potential UK manufacturers and has already taken delivery of products from new, certified UK manufacturers.
- **Expand and improve the logistics network for delivering to the front line.** The Government has brought together the NHS, industry and the Armed Forces to create a huge PPE distribution network, providing drops of critical equipment to 58,000 healthcare settings including GPs, pharmacies and social care providers. The Government is also releasing

stock to wholesalers for primary and social care and has delivered over 50 million items of PPE to local resilience forums to help them respond to urgent local demand. The Government is continually looking at how it improves distribution and is currently testing a new portal to more effectively deliver to smaller providers.

Second, the Government will seek innovative operating models for the UK's health and care settings, to strengthen them for the long term and make them safer for patients and staff in a world where COVID-19 continues to be a risk. For example, this might include using more tele-medicine and remote monitoring to give patients hospital-level care from the comfort and safety of their own homes. Capacity in community care and step-down services will also be bolstered, to help ensure patients can be discharged from acute hospitals at the right time for them. To this end, the Government will establish a dedicated team to see how the NHS and health infrastructure can be supported for the COVID-19 recovery process and thereafter.

Third, recognising that underlying health conditions and obesity are risk factors not just for COVID-19 but also for other severe illnesses, the Government will invest in preventative and personalised solutions to ill-health, empowering individuals to live healthier and more active lives. This will involve expanding the infrastructure for active travel (cycling and walking) and expanding health screening services, especially through the NHS Health Check programme, which is currently under review.

Fourth, the Government remains committed to delivering its manifesto, including to building 40 new hospitals, reforming social care, recruiting and retaining 50,000 more nurses and creating 50 million new GP surgery appointments.

Finally, the Government will continue to bolster the UK's social care sector, to ensure that those who need it can access the care they need outside of the NHS. The Government has committed to invest £1bn in social care every year of this Parliament to support the growing demand on the sector. By having an effective social care system the NHS can continue to discharge people efficiently from hospitals once they no longer need specialist medical support, helping us to keep NHS capacity available for those who need it most. The Government is also committed to longer term reform of the social care sector so no one is forced to have to sell their home to pay for care. Everyone accessing care must have safety and security.

Together these reforms will ensure that as well as preparing for the UK's recovery from COVID-19, the Government learns the lessons from this outbreak and ensures that the NHS is resilient to any future outbreaks.

2. Protecting care homes

The Government's number one priority for adult social care is infection control during the COVID-19 pandemic. Care homes for the elderly are particularly vulnerable because their residents are typically at greatest risk due to age and comorbidities and because the nature of care homes means they are often closed spaces where the virus can spread quickly. In April, the Government published a comprehensive action plan to support the 25,000 providers of adult social care in England

throughout the COVID-19 outbreak, including ramping up testing, overhauling the way PPE is being delivered to care homes and helping to minimise the spread of the virus to keep people safe.³³

This has been supported by £3.2bn of additional funding for local authorities, which can be used to meet some of the rising costs providers are facing and additional pressures on social care; as well as a further £1.3bn for the NHS and local authorities to work together to fund the additional needs of people leaving hospital during the pandemic.

While still too high, the daily number of deaths of people in care homes in England has been falling for the past fortnight. The majority of care homes still have been protected from having any cases and the Government will continue to strengthen the protections against infection of care home residents. Acting on the most recent scientific advice, the Government is taking further steps to support and work with the care home sector, building on work so far. This includes:

- **Testing:** the Government is providing widespread, swift testing of all symptomatic care home residents, and all patients discharged from hospital before going into care homes. It is offering a COVID-19 test to every staff member and resident in every care home in England, whether symptomatic or not; by 6 June, every care home for the over 65s will have been offered testing for residents and staff.
- **Infection prevention and control:** the Government is stepping in to support supply and distribution of PPE to the care sector, delivering essential supplies to care homes, hospices, residential rehabs and community care organisations. It is supporting care homes with extensive guidance, both online and by phone, on how to prevent and control COVID-19 outbreaks. This includes detailed instructions on how to deep clean effectively after outbreaks and how to enhance regular cleaning practices. The NHS has committed to providing a named contact to help 'train the trainers' for every care home that wants it by 15 May. The Government expects all care homes to restrict all routine and non-essential healthcare visits and reduce staff movement between homes, in order to limit the risk of further infection.
- **Workforce:** the Government is expanding the social care workforce, through a recruitment campaign, centrally paying for rapid induction training, making Disclosure and Barring Services checks free for those working in social care and developing an online training and job matching platform.
- **Clinical support:** the Government is accelerating the introduction of a new service of enhanced health support in care homes from GPs and community health services, including making sure every care home has a named clinician to support the clinical needs of their residents by 15 May. The NHS is supporting care homes to take up video consultation approaches, including options for a virtual ward.
- **Guidance:** the Government is providing a variety of guidance, including on [GOV.UK](https://www.gov.uk) and is signposting, through the Social Care Institute for Excellence, resources for care homes, including tailored advice for managing the COVID-19 pandemic in different social care settings and with groups with specific needs, for example adults with learning disabilities and autism.
- **Local Authority role:** every local authority will ensure that each care home in their area has access to the extra support on offer that they need to minimise the risk of infection and spread of infection within their care home, for example that care homes can access the face

³³ <https://www.gov.uk/government/publications/coronavirus-covid-19-adult-social-care-action-plan/covid-19-our-action-plan-for-adult-social-care>

to face training on infection control offered by the NHS, that they have a named clinical lead, know how to access testing for their staff and residents and are aware of best practice guidance for caring for their residents during the pandemic. Any issues in accessing this support will be escalated to regional and national levels for resolution as necessary.

3. Smarter shielding of the most vulnerable

The Government is taking a cautious approach, but some inherent risk to the most vulnerable remains. Around 2.5 million people across the UK have been identified as being clinically extremely vulnerable and advised to shield.³⁴

These are people who are most at risk of severe illness if they contract COVID-19. This means that they have been advised to stay at home at all times and avoid any face-to-face contact, until the end of June. The Government and local authorities have offered additional support to people who are shielding, including delivery of food and basic supplies, care, and support to access medicines, if they are unable to get help with this from family and friends. Over one million food boxes have been delivered in England since the programme started.³⁵ NHS Volunteer Responders and local volunteers are also helping to support this group.

The guidance on shielding and vulnerability will be kept under review as the UK moves through the phases of the Government's strategy. It is likely that the Government will continue to advise people who are clinically extremely vulnerable to shield beyond June. Whilst shielding is important to protect individuals from the risk of COVID-19 infection, the Government recognises that it is challenging for people's wider wellbeing. The Government will review carefully the effect on shielded individuals, the services they have had, and what next steps are appropriate.

For those who need to shield for a longer period, the Government will review the scale and scope of their needs and how the support programme can best meet these. The Government will also consider guidance for others who may be more vulnerable to COVID-19 and how it can support people to understand their risk.

4. More effective, risk-based targeting of protection measures

One way to limit the effect of the shielding measures and better target the social restrictions is to understand the risk levels in different parts of the population - both risk to self and risk to others.

It is clear the virus disproportionately affects older people, men, people who are overweight and people with some underlying health conditions. This is a complex issue, which is why, as set out in Chapter 1, Public Health England is leading an urgent review into factors affecting health outcomes.

In March, based on data and evidence available about the virus at that time, SAGE advised that older people, and those with certain underlying medical conditions, should take additional precautions to reduce the risk of contracting the virus. Those defined as clinically extremely vulnerable have been advised to shield, staying at home at all times and avoiding all non-essential face to face contact. Those who are clinically vulnerable, including all those aged 70 and over and

³⁴ Source: The Ministry of Housing, Communities and Local Government, Welsh Gov, Scottish Gov, NI Gov

³⁵ The Ministry of Housing, Communities and Local Government

pregnant women, have been advised to take particular care to minimise contact with those outside their household.

As our understanding of the virus increases, the Government is monitoring the emerging evidence and will continue to listen to advice from its medical advisers on the level of clinical risk to different groups of people associated with the virus. As the Government learns more, we expect to be able to offer more precise advice about who is at greatest risk. The current advice from the NHS on who is most at risk of harm from COVID-19 can be found [here](#).³⁶

5. Accurate disease monitoring and reactive measures

The success of any strategy based on releasing the current social restrictions while maintaining the epidemic at a manageable level will depend on the Government's ability to monitor the pandemic accurately, as well as quickly detect and tackle a high proportion of outbreaks. This will be especially challenging during the winter months given that COVID-19 shares many symptoms with common colds and the flu.

As the Government lifts restrictions over the coming months, the public must be confident action will be taken quickly to deal with any new local spikes in infections, and that nationally we have a clear picture of how the level of infections is changing. To achieve this, the Government is establishing a new biosecurity monitoring system, led by a new Joint Biosecurity Centre now being established.

Joint Biosecurity Centre (JBC)

The Government's new approach to biosecurity will bring together the UK's world-leading epidemiological expertise and fuse it with the best analytical capability from across Government in an integrated approach.

The Centre will have an **independent analytical function** that will provide real time analysis and assessment of infection outbreaks at a community level, to enable rapid intervention before outbreaks grow. It will work closely with local partners and businesses to:

- collect a wide range of data to build a picture of COVID-19 infection rates across the country – from testing, environmental and workplace data to local infrastructure testing (e.g. swab tests);
- analyse that data to form a clear picture of changes in infection rates across the country, providing intelligence on both the overall national picture and, critically, potential community level spikes in infection rates; and
- advise the Chief Medical Officers of a change in the COVID-19 Alert level who will then advise Ministers.

The Centre will also have a **response function** that will advise on the overall prevalence of COVID-19 to help inform decisions to ease restrictions in a safe way. It will identify specific actions to address local spikes in infections, in partnership with local agencies – for example, advising

³⁶ <https://www.nhs.uk/conditions/coronavirus-covid-19/people-at-higher-risk-from-coronavirus/whos-at-higher-risk-from-coronavirus/>

Ministers, businesses and local partners to close schools or workplaces where infection rates have spiked, to reduce risk of further infection locally.

Local actions triggered by JBC analysis and assessment will be guided by a clear set of protocols based on the best scientific understanding of COVID-19, and what effective local actions look like.

The JBC will be responsible for setting the new COVID-19 Alert level to communicate the current level of risk clearly to the public. **The alert levels are:**

- Level 1** COVID-19 is not known to be present in the UK
- Level 2** COVID-19 is present in the UK, but the number of cases and transmission is low
- Level 3** A COVID-19 epidemic is in general circulation
- Level 4** A COVID-19 epidemic is in general circulation; transmission is high or rising exponentially
- Level 5** As level 4 and there is a material risk of healthcare services being overwhelmed

The Government will engage with the devolved administrations to explore how the centre can operate most effectively across the UK, as it is established. Over time the Government will consider whether the JBC should form part of an extended infrastructure to address biosecurity threats to the UK, and whether the COVID-19 alert level system should be expanded to other potential infectious diseases.

6. Testing and tracing

Mass testing and contact tracing are not, in themselves, solutions, but may allow us to relax some social restrictions faster by targeting more precisely the suppression of transmission. The UK now has capacity to carry out over 100,000 tests per day, and the Government has committed to increase capacity to 200,000 tests per day by the end of May.

The Government has appointed Baroness Harding to lead the COVID-19 Test and Trace Taskforce. This programme will ensure that, when someone develops COVID-19-like symptoms, they can rapidly have a test to find out if they have the virus – and people who they've had recent close contact with can be alerted and provided with advice. This will:

- identify who is infected more precisely, to reduce the number of people who are self-isolating with symptoms but who are not actually infected, and to ensure those who are infected continue to take stringent self-isolation measures; and
- ensure those who have been in recent close contact with an infected person receive rapid advice and, if necessary, self-isolate, quickly breaking the transmission chain.

This cycle of testing and tracing will need to operate quickly for maximum effect, because relative to other diseases (for example SARS) a proportion of COVID-19 sufferers almost certainly become infectious to others before symptoms are displayed; and almost all sufferers are maximally infectious to others as soon as their symptoms begin even if these are initially mild.

For such a system to work, several systems need to be built and successfully integrated. These include:

- widespread swab testing with rapid turn-around time, digitally-enabled to order the test and securely receive the result certification;
- local authority public health services to bring a valuable local dimension to testing, contact tracing and support to people who need to self-isolate;
- automated, app-based contact-tracing through the new NHS COVID-19 app to (anonymously) alert users when they have been in close contact with someone identified as having been infected; and
- online and phone-based contact tracing, staffed by health professionals and call handlers and working closely with local government, both to get additional information from people reporting symptoms about their recent contacts and places they have visited, and to give appropriate advice to those contacts, working alongside the app and the testing system.

Anyone with symptoms should isolate immediately, alongside their households, and apply for a test. If a negative test is returned, then isolation is no longer required. Once identified, those contacts considered to be at risk will be asked to isolate, either at the point of a positive test or after 48 hours - whichever is sooner.

Outbreaks amongst the socially excluded - whether through poverty or homelessness - are likely to be especially difficult to detect and harmful, since people in these groups may lack the means to isolate themselves when ill.

The Government will increasingly augment swab-based antigen testing, which determines whether a person currently has the virus, with antibody testing, which shows whether a person has previously had it, once it is sufficiently reliable to do so.

Whilst the measures above will involve an unprecedented degree of data-collection, as many Asian countries implemented after the SARS and MERS outbreaks, the Government will enact robust safety measures.

Part of the tracing effort will include a voluntary NHS contact tracing application (the NHS COVID-19 app, Figure 7) for smartphones; this will help increase the speed and effectiveness of the tracing effort.

Information collected through the Test and Trace programme, together with wider data from sources such as 111 online, will form part of a core national COVID-19 dataset. The creators of a number of independent apps and websites which have already launched to collect similar data have agreed to work openly with the NHS and have aligned their products and data as part of this central, national effort.

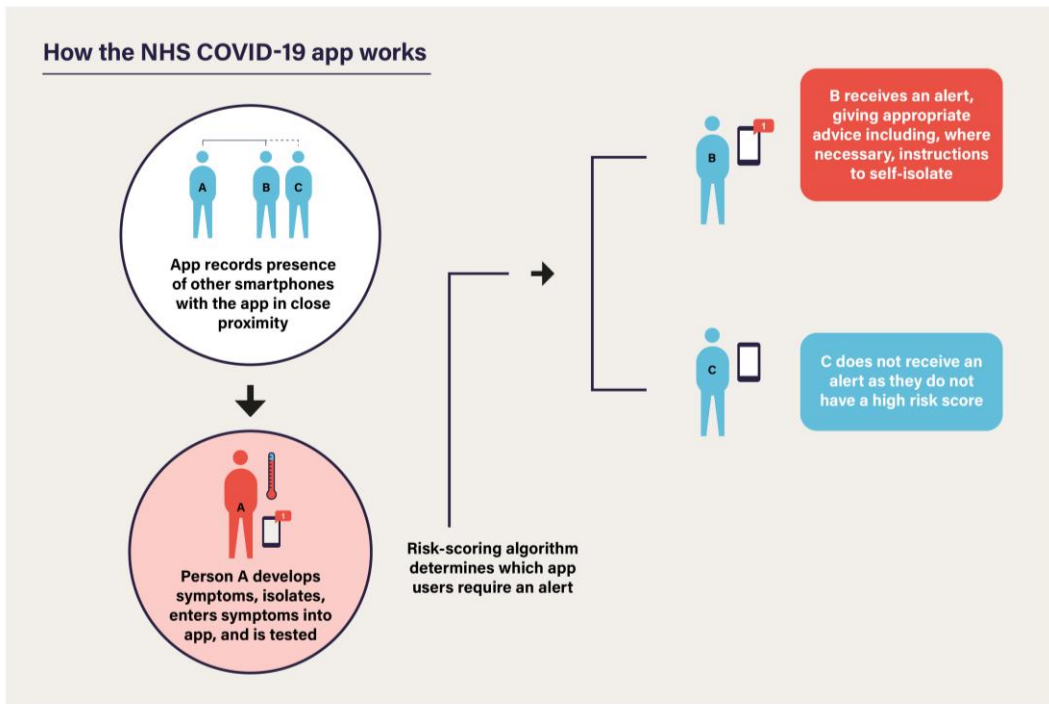


Figure 7: **The NHS COVID-19 app** Model for the NHS COVID-19 app at national launch.

7. Increased scientific understanding

Better scientific understanding of COVID-19 will help us act more precisely and confidently to limit its spread, improve treatments and help us develop vaccines. It will also help us better gauge risk of infection so the Government can adjust social restrictions such that it is neither being overly cautious nor reckless.

The Government is investing across the board in both basic genetic research and clinical studies:

- A joint NIHR-UKRI rapid response call, now closed, awarded £24.6m across 27 projects including for testing a vaccine, developing therapies and improving understanding of how to treat COVID-19. Building on the initial rapid funding round for COVID-19 research, the NIHR and UKRI are holding a rolling call for proposals for research into COVID-19. The call is for UK-led academic, small and medium enterprise (SME) and wider industry research that will address a wide range of COVID-19 knowledge gaps/needs, and which will lead to a benefit in UK, potentially international, public health within 12 months.
- The Government has recruited over 9,000 patients to the world's largest randomised COVID-19 therapeutics control trial (the RECOVERY Trial) to test whether therapeutics for other diseases can be repurposed; this is supported by a rapid response grant from the above call. More detail on this is set out below.
- The UK has launched a £20m COVID-19 Genomics consortium to map the spread of COVID-19 using genomic sequencing.
- Funded by the Department of Health and Social Care and UKRI, the collaborative programme ACCORD (Accelerating COVID-19 Research & Development platform) will

accelerate the development of new drugs for patients hospitalised with COVID-19, reducing the time taken to set up clinical studies for new therapies from months to weeks. The first of the new and existing medicines to be tested through the ACCORD platform is Bemcentinib.

- UKRI has also opened a call for short-term (12-18 month) projects addressing and mitigating the health, social, economic, cultural and environmental impacts of the COVID-19. This was launched on 31 March; eligible organisation from across the UK may apply, and there is no closing date.

8. "COVID-19 Secure" guidelines

Since mid-April an extensive programme of engagement has been underway between Government, the Health and Safety Executive, the public health authorities, business representative groups, unions, employers and local authorities, to agree the best way to make workplaces less infectious.

The guidelines will be based on sound evidence - from what has worked elsewhere in the world, and the best available scientific theory. The most important guidelines people can follow to stay safer outside their homes are attached at Annex A. For example:

- Individuals should **keep their distance from people outside their household**, wherever possible. Transmission is affected by both duration and proximity of contact; individuals should not be too close to other people for more than a short amount of time. Public Health England recommends trying to keep two metres away from people as a precaution.
- It remains essential to **keep hands and face as clean as possible**. People should wash their hands often, using soap and water, and dry them thoroughly. Touching of the face should be avoided. Hand sanitiser should be carried when travelling and applied where available outside the home, especially when entering a building and following contact with surfaces. **Clothes should also be washed regularly**, as there is some evidence that the virus can stay on fabrics.
- It is possible to reduce the risks of transmission in the workplace by **limiting the number of people that any given individual comes into contact with regularly**. Employers can support this where practical by changing shift patterns and rotas to keep smaller, contained teams. Evidence also suggests the virus is **less likely to be transmitted in well-ventilated areas**.

In addition to COVID-19 Secure guidelines for workplaces, the Government will consult on and release similar guidelines for schools, prisons, and other public spaces.

9. Better distancing measures

As set out in the previous chapter, during the second phase, the Government will steadily replace the current social restrictions with better targeted ones that best balance the three aims set out at the beginning of this document. The Government will engage widely ahead of each new stage of adjustments being designed and released.

10. Economic and social support to maintain livelihoods and restore the economy

The Government has announced one of the most generous and comprehensive support packages in the world, providing security and support for those who get sick or can't work and a bridge for businesses to protect people's jobs.

Support has been announced to help millions of workers and businesses, for the most vulnerable in society and those on the lowest income, for homeowners and renters, and for public services and vital sectors. The Government's package has also been complemented by the actions of the independent Bank of England.

The Government has introduced the Coronavirus Job Retention Scheme to prevent employers having to lay off staff and the Self-Employment Income Support Scheme to support eligible sole traders and partnerships, and has increased the standard allowance of Universal Credit and basic element of Working Tax Credits by £20 a week for one year (this will mean claimants are £1,040 per year better off). In the first two weeks since the Job Retention scheme was launched, over 800,000 employers have applied for help to pay the wages of over 6 million furloughed jobs.

The Government has increased the support it is offering through the benefit system for housing costs and for the self-employed, it has introduced a moratorium on private rental sector evictions, has established a new hardship fund and provided support for rough sleepers. Lenders are offering mortgage holidays for borrowers struggling with their finances and unable to make their repayments as a result of COVID-19.

This is in addition to support for businesses, including:

- VAT deferrals until the end of June that provide a direct cash injection of over £30bn, Self-Assessment tax deferrals from July to next January, providing a cashflow benefit of £13bn and more than 64,000 tailored Time to Pay arrangements agreed with businesses and individuals;
- A business rates holiday worth £11bn to businesses;
- Direct cash grants worth £10,000 or £25,000 for small businesses including in the retail, hospitality or leisure sectors, worth over £12bn in total;
- £1.25bn support for innovative firms;
- A rebate scheme to reimburse SMEs for part of their SSP costs worth up to £2bn for up to two million businesses; and
- A package of government-backed and guaranteed loans, which make available approximately £330bn of guarantees.

The Government is also supporting the NHS and other public services in the fight against the virus. So far more than £16bn from the COVID-19 Response Fund has gone towards the effort.

The Government recognises that many charities are working on the frontline to support people including hospices, citizens advice and support for victims of domestic violence and has provided a £750m package to enable those working on the frontline to continue supporting UK communities.

However, these measures are extraordinarily costly and cannot be sustained for a prolonged period of time. Precise costs will depend on a range of factors including the impact of the crisis on the wider economy and the level of take up for each scheme. The Office for Budget Responsibility has estimated that the direct cost to the Government of the response to COVID-19 could rise

above £100bn in 2020-21. In addition to this, support of approximately £330bn (equivalent to 15% of GDP) in the form of guarantees and loans has been made available to business.

So as the UK adjusts the current restrictions, the Government will also need to wind down the economic support measures while people are eased back to work

The Government will also need to ensure the UK's supply chains are resilient, ensuring the UK has sufficient access to the essential medicines, PPE, testing equipment, vaccines and treatments it needs, even during times of global shortage.

The world will not return to 'normal' after COVID-19; much of the global economy is likely to change significantly. The UK will need to be agile in adapting to and shaping this new world if the Government is to improve living standards across the nation as it recovers from COVID-19.

11. Treatments and vaccines

A vaccine or treatment can be used in several ways to help manage down the epidemic. Broadly in public health terms these can be divided into an epidemic modifying vaccine strategy, a disease modifying vaccine strategy and treatments to reduce the risk or severity of illness for those who catch the virus or for certain patient groups.

An epidemic modifying vaccine strategy aims to induce immunity to the infection at the population level and therefore stop the epidemic. To be epidemic modifying the vaccine has to be very safe (because it is used in the entire population) and highly effective.

A disease modifying vaccine strategy aims to protect all or selected vulnerable parts of the population from the worst effects of the disease, even if the vaccine is not capable of complete protection against infection. It might for example ensure that those vaccinated are much less likely to die from the disease. The epidemic may continue but with significantly reduced mortality and long-term health effects.

To move to phase three as quickly as possible, the Government must compress the time taken to develop, test, manufacture and distribute a reliable vaccine or treatments as far as possible. That means four immediate actions.

First, the government has launched the Vaccines and Treatments Taskforce, which will accelerate the development of a vaccine and treatments and ensure that, if one ever becomes available, it can be produced in mass quantities and safely administered to the public.

Second, on therapeutic treatments, the UK currently has three key national phase III drugs trials underway – RECOVERY, PRINCIPLE and REMAP-CAP - testing over 10 different drugs, as well as national programmes to evaluate more experimental drugs that show promise. RECOVERY, one of the key national phase III trials is currently the world's largest randomised control trial on COVID-19 therapeutics, recruiting 5,000 patients in under four weeks and now over 9,500.

Third, the Government is investing in the UK's sovereign manufacturing capability to ensure that at the point a vaccine or drug-based treatment is developed it can be manufactured at scale as quickly as possible. Therefore, the Government is working with the BioIndustry Association Taskforce to review UK manufacturing capabilities, which exist in academic and industrial spaces, alongside the UK's national centres. This will include assessing where the UK can repurpose existing sites for different vaccine types in the short-term, and where capacity can be sustainably

built to provide a longer-term solution. The Government will also review how it can support the acceleration, and expand the capacity, of the Vaccines Manufacturing and Innovation Centre, so it becomes operational earlier than planned and can manufacture population level doses.

Fourth, if a successful vaccine has been developed, it will be critical the Government can deliver it as quickly and as safely as possible, to those who need it most. Whilst there are numerous potential COVID-19 vaccine candidates and timings remain uncertain, the Government is working on the general principle that people should be vaccinated as soon as a safe vaccine becomes available. This will be a major logistical undertaking, and the Government will seek Joint Committee on Vaccination and Immunisation (JCVI) advice on deployment.

12. International action and awareness

COVID-19 does not recognise international borders and the UK will only truly be free of it when it has been eliminated from all four corners of the globe. Our health and economic systems will not fully recover while others are still suffering from its effects. As an outward-looking nation it is in our best interests, and our nature, to be at the forefront of a coordinated global response.

Consequently, we have spearheaded global action to counter the pandemic, including through the G7 and G20. On 4 May the UK co-led the Coronavirus Global Response International Pledging event, bringing together 42 nations to mobilise £6.5bn. The UK also co-led, with India, the development of the G20's Action Plan that, among other things, calls for the rapid implementation of the \$200bn (USD) package of global support from the World Bank Group and Regional Development Banks. This has also seen a landmark suspension of debt service repayments to official creditors, worth \$12bn (USD), for the world's least developed countries until 2021.

UK contributions also have played a critical role in ensuring that the global response is funded and fit for purpose. The Government has pledged over £388m towards the global \$8bn (USD) funding call for vaccines, therapeutics and diagnostics. This includes the largest contribution of any country to the Coalition Epidemic Preparedness Innovations appeal, which is leading efforts to develop a COVID-19 vaccine. The UK will also provide £330m a year for the next five years to the Global Vaccine Alliance (Gavi), making the UK the world's largest donor and readying Gavi to distribute a COVID-19 vaccine in developing countries. Looking ahead, the UK is also hosting the Global Vaccine Summit on 4 June, which will replenish Gavi's funds for the next 5 years.

Until a vaccine is ready, the Government will use the UK's position as a world leader in international development to help safeguard the wellbeing of the world's most vulnerable populations. The Government has made an additional contribution of up to £150m of UK aid funding to the International Monetary Fund's Catastrophe Containment and Relief Trust to help developing countries meet their debt repayments, and has doubled its £2.2bn loan to the Poverty Reduction and Growth Trust, both of which will free up space for low income countries to respond to the immediate crisis. The Government has provided £276m to address the impact of the pandemic and save lives among the world's most vulnerable communities, including £220m provided to international organisations (including the UN and ICRC) and UK charities to save lives amongst those beyond the reach of traditional health services. The UK is also deploying technical assistance and expertise as part of the response to assist the UN and developing countries.

The UK is focussing on the primary and secondary impacts of COVID-19 on health and nutrition, society and economy. We know that COVID-19 will exacerbate gender inequality as we saw with the Ebola outbreak in West Africa. The UK is pushing for greater explicit consideration of and support to women and girls across the COVID-19 response. We are providing £10 million to UNFPA to provide lifesaving Sexual and Reproductive Health care and gender-based violence prevention and response services as part of our wider support to the UN Humanitarian Response Plan.

The crisis has highlighted that free trade is vital to the UK's national wellbeing. The Government is working to ensure that all countries have access to critical goods, including medical supplies and food, despite the restrictions on movement required to counter the pandemic. As the UK starts to recover, the Government will lead work to develop more resilient supply chains so that we can continue to benefit from free and open global trading systems, while reducing risks in critical sectors. The Government will also continue to lead work on the international economic recovery, striving to deliver a UK and world economy which is stronger, cleaner, more sustainable and more resilient after this crisis.

13. Public communication, understanding and enforcement

The social restrictions with which the Government has had to ask everyone to comply represent an extraordinary intrusion into the public's normal way of living.

As the Government begins to adjust the restrictions, it faces a difficult choice: the more precisely the Government targets the measures, the faster it will be possible to move. However, the more complex the request becomes, the harder it is for people to comply with the measures.

"Stay at home" has been a simple, clear message. But as more social contact resumes, the Government will need to ask people to operate in new ways. This will require a high level of understanding, if adherence is to remain at the high levels the Government needs to avoid a second peak in infections.

The Government will therefore invest in enhancing population-wide public health education to ensure everyone has the information and education needed to take responsible risk judgements, and operate in a way that is safe for themselves and for others. Crucially, even those who are at low personal risk will need to continue following the rules and guidance so that they do not pass on the infection to others.

Whilst much of the Government's strategy centres on reducing the costs of complying with the measures wherever possible, as the UK moves into the next phase, where the Government will need to trust people to comply with more subtle social restrictions, the Government will also need to ensure robust enforcement measures to deter and reduce the threat from the small minority who elect not to act responsibly.

14. Sustainable government structures

COVID-19 has been perhaps the biggest test of governments worldwide since the 1940s. As the Government navigates towards recovery, it must ensure it learns the right lessons from this crisis and acts now to ensure that governmental structures are fit to cope with a future epidemic,

including the prospect of an outbreak of a second epidemic - for example, a pandemic flu - while the Government is still responding to COVID-19.

This will require a rapid re-engineering of government's structures and institutions to deal with this historic emergency and also build new long-term foundations for the UK, and to help the rest of the world.

The crisis has shown many parts of Government at its best; for example the NHS has demonstrated great creativity and energy in rapidly transforming its data, analytics and procurement processes. There is now an opportunity to spread these innovations across government.

Before the virus struck, the Government's Budget set out plans to invest in infrastructure, including significant investments in science, technology and skills. Previous generations built infrastructure on which the public now depend. Now it is the Government's responsibility to build the public health and governmental infrastructure - across the entirety of the United Kingdom - that will protect the country for decades to come.

COVID-19 will not be the last major disease that endangers us. The Government must prepare and build now for diseases that could threaten us in the future.

6. How you can help

To date, the people of the United Kingdom have adapted with creativity and compassion to the demands COVID-19 has placed on us all. The UK now needs to prepare for an extended period of living with and managing the threat from the virus; this will continue to require everyone's support and adherence.

A collective effort

The threat is a collective one; the responsibility to keep everyone safe is one everyone shares.

If the Government is to begin to adjust the social restrictions, it will require everyone to act thoughtfully and responsibly to keep R down, and the Government has little room for error.

If, as restrictions are lifted, everyone chooses to act cautiously and in line with the revised guidance, R will remain low, the rate of transmission will decline further, and the Government can lift more restrictions.

This effort must, however, be a shared and collective one; only a small number of new outbreaks would cause R to tip back above one and require the re-imposition of some restrictions.

In judging when to adjust each restriction, the Government will be guided by the best possible evidence and will be, as in this document, transparent about the basis for the decision.

Lending a hand

The response of individuals, communities, charities and businesses across the United Kingdom - to step in and lend a hand to support the national effort - has been tremendous. There are still opportunities to support the COVID-19 effort even more directly.

To find opportunities to volunteer with charities or the NHS, please see:

<https://www.gov.uk/volunteering/coronavirus-volunteering>

To offer business support, such as equipment, services or expertise, please see:

<https://www.gov.uk/coronavirus-support-from-business>

To apply for grant funding for short-term projects addressing the impact of COVID-19, please see:

<https://www.ukri.org/funding/funding-opportunities/ukri-open-call-for-research-and-innovation-ideas-to-address-covid-19/>

If you are a clinician considering a return to the NHS in England, Scotland and Wales or the HSC in Northern Ireland, please see:

<https://www.england.nhs.uk/coronavirus/returning-clinicians/> (In England)

<https://www.gov.scot/publications/coronavirus-covid-19-guide-for-health-professions-considering-a-return-to-the-nhs-scotland/> (In Scotland)

<https://gov.wales/health-professionals-coronavirus> (In Wales)

<https://www.health-ni.gov.uk/Covid-19-returning-professionals> (In Northern Ireland)

Annex A: Staying safe outside your home

This guidance sets out the principles you should follow to ensure that time spent with others outside your homes is as safe as possible (unless you are clinically vulnerable or extremely vulnerable in which case you should follow separate advice on [GOV.UK](https://www.gov.uk)). It is your responsibility to adopt these principles wherever possible. The Government is also using these principles as the basis of discussions with businesses, unions, local government and many other stakeholders to agree how they should apply in different settings to make them safer. All of us, as customers, visitors, employees or employers, need to make changes to lower the risk of transmission of the virus. The Government has consulted with its scientific advisers to establish the principles that will determine these changes.

Keep your distance from people outside your household, recognising this will not always be possible. The risk of infection increases the closer you are to another person with the virus **and** the amount of time you spend in close contact: you are very unlikely to be infected if you walk past another person in the street. Public Health England recommends trying to keep 2m away from people as a precaution. However, this is not a rule and the science is complex. The key thing is to not be too close to people for more than a short amount of time, as much as you can.

Keep your hands and face as clean as possible. Wash your hands often using soap and water, and dry them thoroughly. Use sanitiser where available outside your home, especially as you enter a building and after you have had contact with surfaces. Avoid touching your face.

Work from home if you can. Many people can do most or all of their work from home, with the proper equipment and adjustments. Your employer should support you to find reasonable adjustments to do this. However, not all jobs can be done from home. If your workplace is open and you cannot work from home, you can travel to work.

Avoid being face to face with people if they are outside your household. You are at higher risk of being directly exposed to respiratory droplets released by someone talking or coughing when you are within 2m of someone and have face-to-face contact with them. You can lower the risk of infection if you stay side-to-side rather than facing people.

Reduce the number of people you spend time with in a work setting where you can. You can lower the risks of transmission in the workplace by reducing the number of people you come into contact with regularly, which your employer can support where practical by changing shift patterns and rotas to match you with the same team each time and splitting people into smaller, contained teams.

Avoid crowds. You can lower the risks of transmission by reducing the number of people you come into close contact with, so avoid peak travel times on public transport where possible, for example. Businesses should take reasonable steps to avoid people being gathered together, for example by allowing the use of more entrances and exits and staggering entry and exit where possible.

If you have to travel (to work or school, for example) think about how and when you travel.

To reduce demand on the public transport network, you should walk or cycle wherever possible. If you have to use public transport, you should try and avoid peak times. Employers should consider staggering working hours and expanding bicycle storage facilities, changing facilities and car parking to help.

Wash your clothes regularly. There is some evidence that the virus can stay on fabrics for a few days, although usually it is shorter, so if you are working with people outside your household wash your clothes regularly. Changing clothes in workplaces should only normally be considered where there is a high risk of infection or there are highly vulnerable people, such as in a care home. If you need to change your clothes avoid crowding into a changing room.

Keep indoor places well ventilated. Evidence suggests that the virus is less likely to be passed on in well-ventilated buildings and outdoors. In good weather, try to leave windows and doors open in places where people from different households come into contact – or move activity outdoors if you can. Use external extractor fans to keep spaces well ventilated and make sure that ventilation systems are set to maximise the fresh air flow rate. Heating and cooling systems can be used at their normal temperature settings.

If you can, wear a face covering in an enclosed space where social distancing isn't possible and where you will come into contact with people you do not normally meet. This is most relevant for short periods indoors in crowded areas, for example on public transport or in some shops. The evidence suggests that wearing a face covering does not protect you, but it may protect others if you are infected but have not developed symptoms. If you have symptoms of COVID-19 (cough and/or high temperature) you and your household should isolate at home: wearing a face covering does not change this. A face covering is not the same as the surgical masks or respirators used as part of personal protective equipment by healthcare and other workers; these supplies should continue to be reserved for those who need them to protect against risks in their workplace, such as health and care workers and those in industrial settings like those exposed to dust hazards. Face coverings should not be used by children under the age of 2 or those who may find it difficult to manage them correctly, for example primary school age children unassisted, or those with respiratory conditions. It is important to use face coverings properly and wash your hands before putting them on and taking them off.

You can make face coverings at home; the key thing is it should cover your mouth and nose. You can find guidance on how to do this on [GOV.UK](https://www.gov.uk).

You should follow the advice given to you by your employer when at work. Employers have a duty to assess and manage risks to your safety in the workplace. The Government has issued guidance to help them do this. This includes how to make adjustments to your workplace to help you maintain social distance. It also includes guidance on hygiene as evidence suggests that the virus can exist for up to 72 hours on surfaces. Frequent cleaning is therefore particularly important for communal surfaces like door handles or lift buttons and communal areas like bathrooms, kitchens and tea points. You can see the guidance on [GOV.UK](https://www.gov.uk) and can ask your employer if you have questions.

Annex B: Summary table: COVID-19 vulnerable groups

Group	Explanation	Current & Continuing Guidance	Government Support
<p>Clinically Extremely Vulnerable People (All in this cohort will have received communication from the NHS)</p>	<p>People defined on medical grounds as clinically extremely vulnerable, meaning they are at the greatest risk of severe illness. This group includes solid organ transplant recipients; people receiving chemotherapy; renal dialysis patients; and others.</p>	<p>Follow shielding guidance by staying at home at all times and avoiding all non essential face-to-face contact. This guidance is in place until end June.</p>	<p>Support available from the National Shielding Programme, which includes food supplies (through food boxes and priority supermarket deliveries), pharmacy deliveries and care. Support is available via the NHS Volunteer Responders app.</p>
<p>Clinically Vulnerable People</p>	<p>People considered to be at higher risk of severe illness from COVID-19.</p> <p>Clinically vulnerable people include the following: people aged 70 or older, people with liver disease; people with diabetes; pregnant women; and others.</p>	<p>Stay at <u>home</u> as much as possible. If you do go out, take particular care to minimise contact with others outside your household.</p>	<p>Range of support available while measures in place, including by local authorities and through voluntary and community groups. Support is available via the NHS Volunteer Responders app.</p>
<p>Vulnerable People (Non-clinical)</p>	<p>There are a range of people who can be classified as "vulnerable" due to non-clinical factors, such as children at risk of violence or with special educational needs; victims of domestic abuse; rough sleepers; and others.</p>	<p>People in this group will need to follow general guidance except where they are also clinically vulnerable or clinically extremely vulnerable where they should follow guidance as set out above.</p>	<p>For those who need it, a range of support and guidance across public services and the benefits system, including by central and local Government and the voluntary and community sector.</p>

CCS0520577950

978-1-5286-1911-0