

Five tests for adjusting the lockdown

- 1 ➤ The NHS has sufficient capacity to provide critical care and specialist treatment right across the UK
- 2 ➤ A sustained and consistent fall in daily deaths from Coronavirus
- 3 ➤ Reliable data to show that the rate of infection is decreasing to manageable levels across the board
- 4 ➤ Operational challenges including testing and PPE are in hand with supply able to meet future demand
- 5 ➤ Confident that any adjustments to the current measures will not risk a second peak of infections that overwhelms the NHS

Preventing the spread of COVID-19 (Great Britain)

For the period 17 to 27 April:

**Most people are avoiding contact
with vulnerable people**



82%

of adults said they had either not left their home or only left for the permitted reasons in the past seven days.



92%

of adults said they have avoided contact with older or vulnerable people in the past seven days.

**More people are working from
home since the introduction of
social distancing**



44%

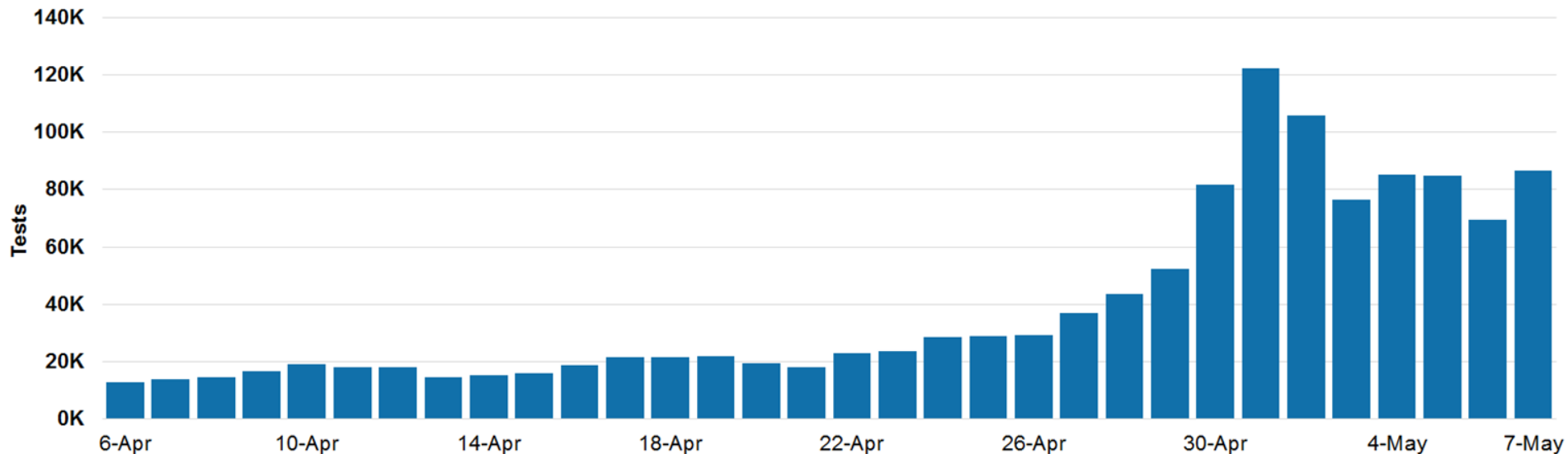
of adults in employment said they worked from home at some point in the last week, compared to around 12%* last year.

Source: Opinions and Lifestyle Survey (OPN), Office for National Statistics. OPN aims to understand the impact of the coronavirus pandemic on people, households and communities in Great Britain. A person is said to be "in employment" if they had a paid job, either as an employee or self-employed; they did any casual work for payment; or they did any unpaid or voluntary work in the previous week. Data is collected on a 10-day period. *Annual Population Survey, Office for National Statistics. OPN results are not directly comparable to the Annual Population Survey but provide an insight into the change in homeworking.

STAY HOME > PROTECT THE NHS > SAVE LIVES

Daily Tests (UK)

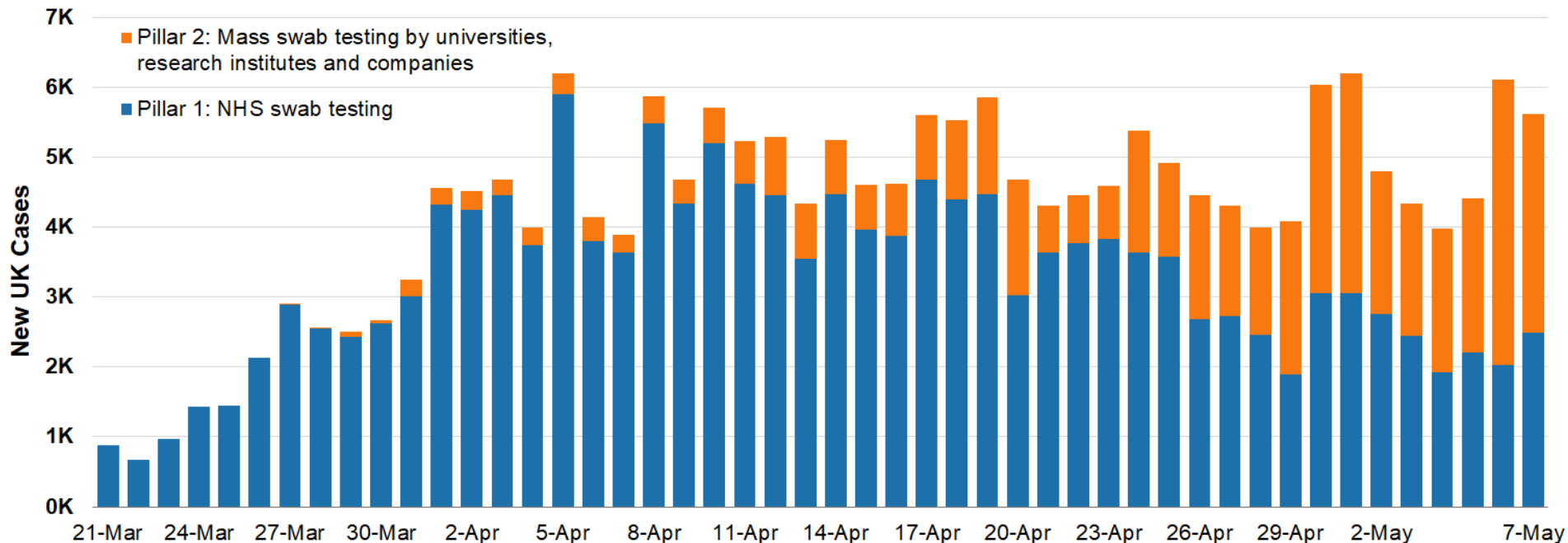
As of 9am 7th May, there have been 1,534,533 tests in total. In the 24 hours up to 9am on 7th May, there were 86,583 tests in the UK.



Source: DHSC/NHSX, NHSE, Welsh Gov., Scottish Gov., Northern Ireland Executive. The number of tests includes; (i) tests processed through our labs, and (ii) tests sent to individuals at home or to satellite testing locations. Chart date corresponds to the date tests were reported as of the 24 hours before 9am that day.

New Cases (UK)

On 7th May 5,614 new cases were recorded. There are likely to be more cases than recorded here.

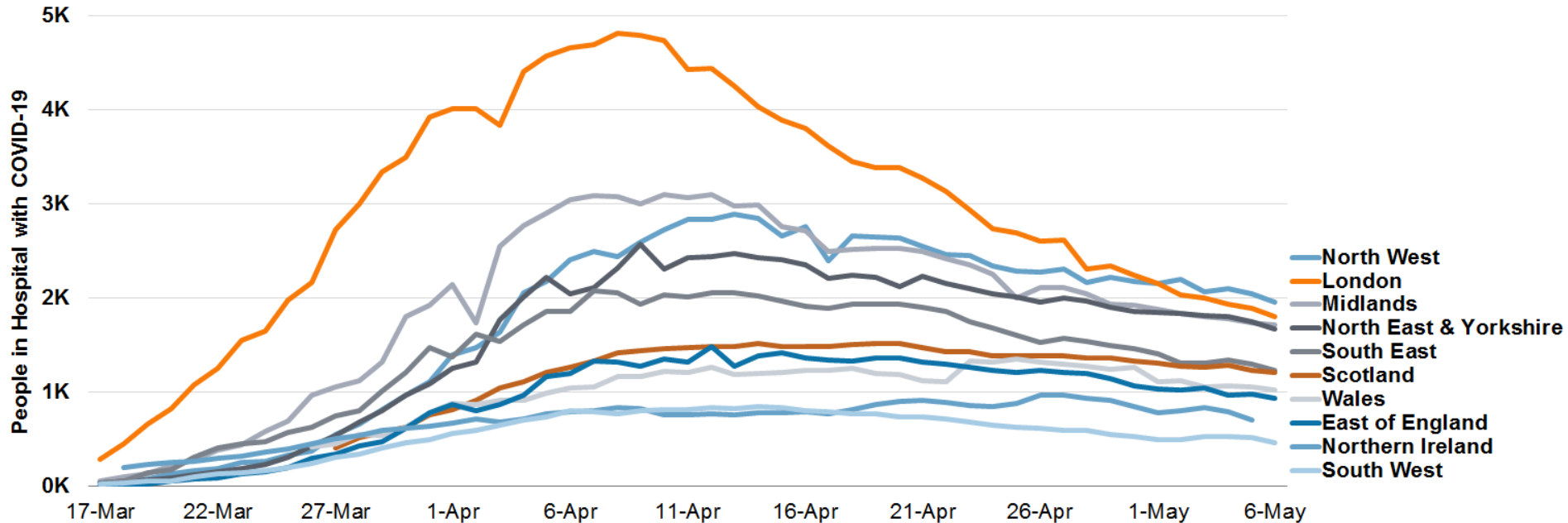


Source: Department of Health and Social Care. Pillar 1: Swab testing in PHE labs and NHS hospitals for those with a medical need and, where possible, the most critical key workers. Pillar 2: Mass swab testing for critical workers in the NHS, social care and other sectors and symptomatic household members, delivered by a partnership of universities, research institutes and companies. Cases are reported when lab tests are completed. This may be a few days after initial testing. Chart date corresponds to the date tests were reported as of the 24 hours before 9am that day.

STAY HOME > PROTECT THE NHS > SAVE LIVES

People in Hospital with COVID-19 (UK)

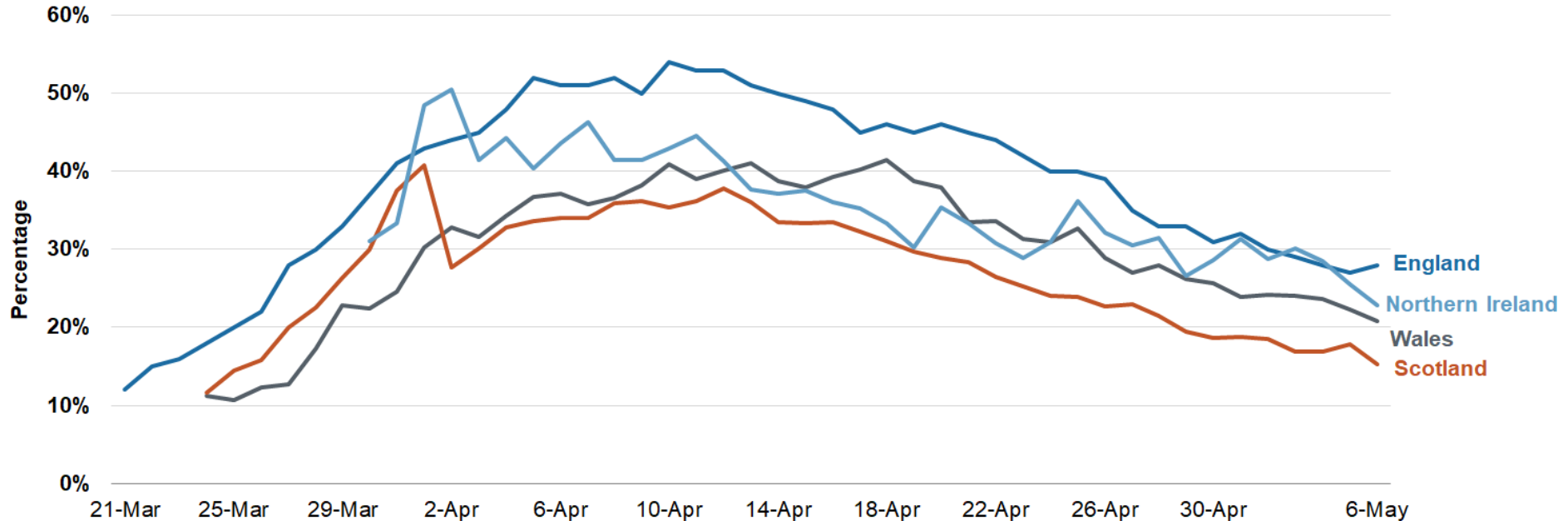
Over the last week the number of people with COVID-19 in UK hospitals has fallen from 15,100 to 12,692, a decrease of 16%.



Source: NHSE, Welsh Gov., Scottish Gov., Northern Ireland Executive. National data may not be directly comparable as data about COVID-19 patients in hospitals is collected differently across nations. Community hospitals are included in figures for Wales from 23 April onwards. Scottish data has been updated to only reflect 'confirmed' cases; with 'suspected' cases removed. Due to the way Northern Ireland report, the UK figure is calculated by taking the most recent day for Great Britain plus the previous day for Northern Ireland.

Critical Care Beds with COVID-19 patients (UK)

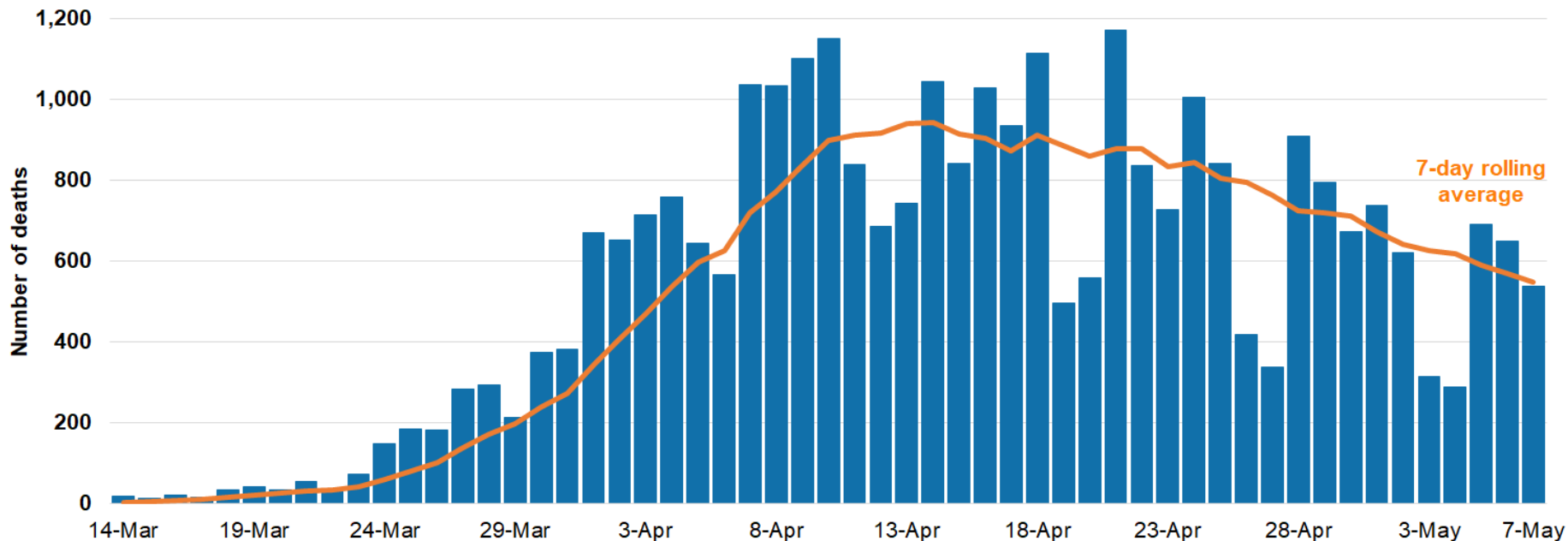
Less than a third of critical care beds are occupied by COVID-19 patients. This has been decreasing for most of the UK over the last 2 weeks.



Source: NHSE, Welsh Gov., Scottish Gov., Northern Ireland Executive. Different health systems collect this data differently. In England critical care beds count high dependency units / intensive therapy unit beds as critical care beds, in Wales critical care beds are taken to be invasive ventilation beds including new surge capacity, in Scotland critical care beds include ICU beds and additional surge capacity, and in Northern Ireland critical care beds includes all ICU beds.

Daily COVID-19 Recorded Deaths (UK)

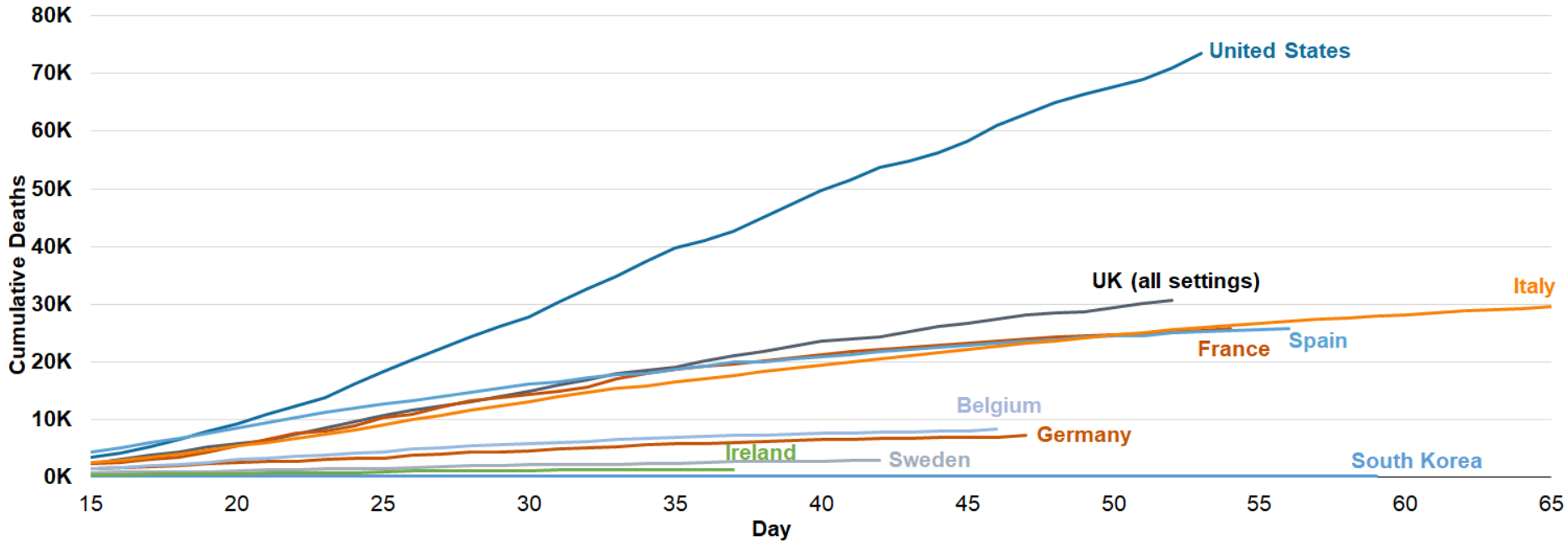
There were an additional 539 deaths of people who had tested positive for coronavirus.



Source: Department of Health and Social Care, sourced from Public Health England and the devolved administrations. 7-day rolling average (mean) of daily deaths.

Global Death Comparison

Different countries have different methods of counting COVID-19 deaths which means it is difficult to compare statistics across countries.



Source: Public Health England, UK devolved administrations, Johns Hopkins University. Country data is aligned by stage of the outbreak. Day 0 equals the first day 50 cumulative deaths were reported. UK figures on deaths relate to those who have tests positive for COVID-19, whichever setting they died in. International reporting procedures and lags are unclear, so may not be comparing like-for-like.