

# The weekly surveillance report in England

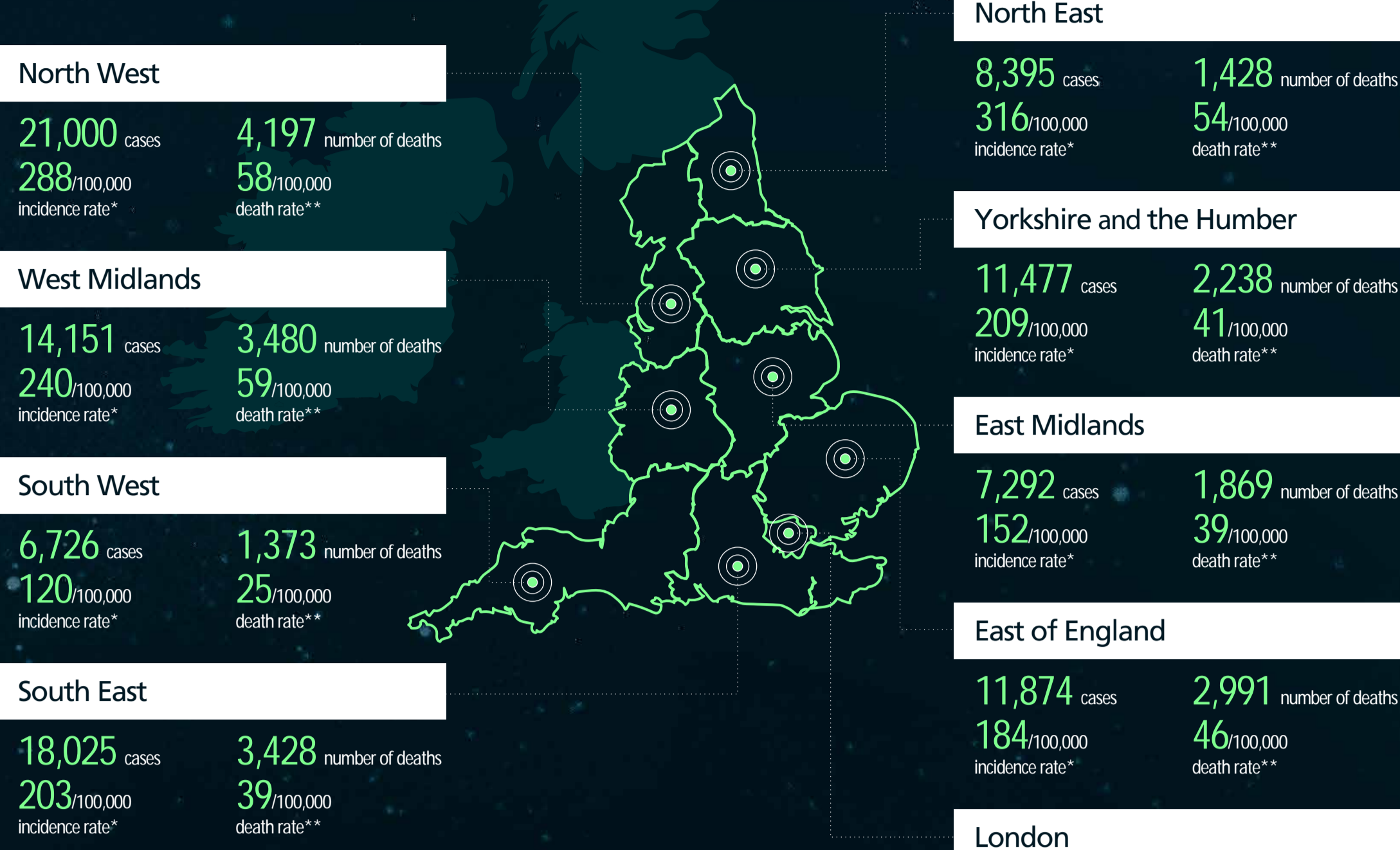
Coronavirus (COVID-19)

week: 30 April 2020 to 6 May 2020

cumulative data from:  
**31 January 2020 to 6 May 2020** in England

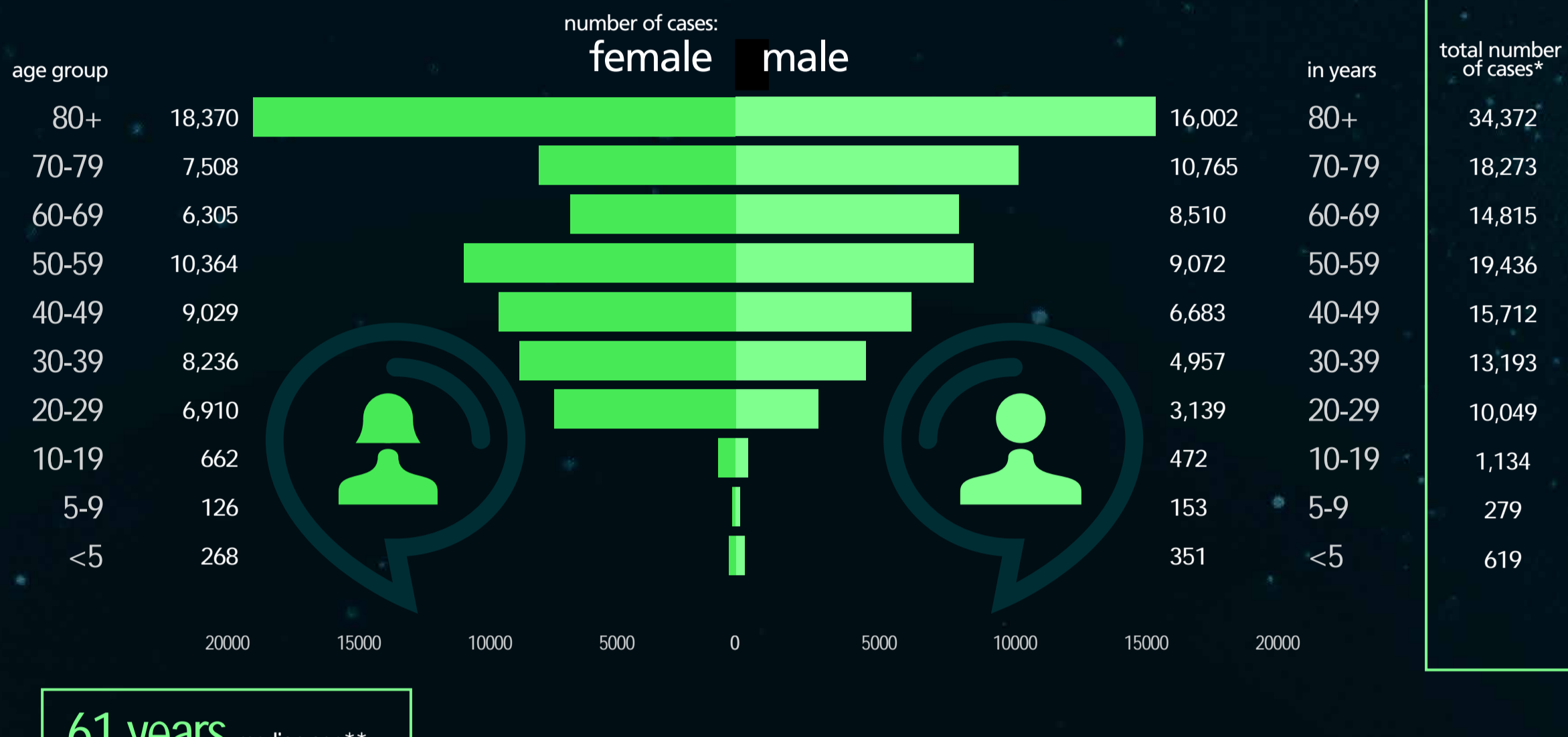
total number of COVID-19 cases <b>129,799</b>	total number of people tested <b>543,801</b>	total number of deaths <b>27,008</b>
this week's number of COVID-19 cases <b>12,940</b>	this week's number of people tested <b>140,497</b>	this week's number of deaths <b>3,458</b>

**PHE CENTRE MAP**



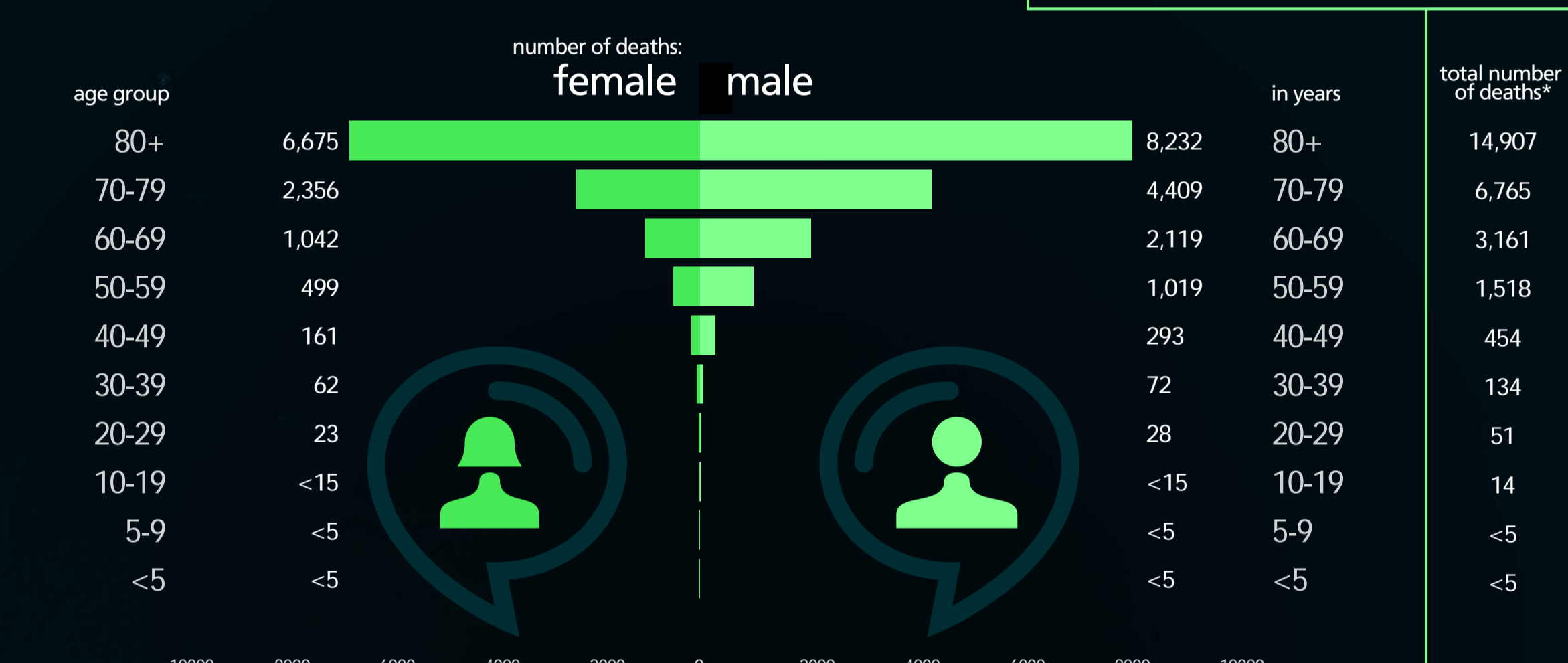
information on residential location is pending for 5,502 cases and 424 deaths  
number of deaths with lab-confirmed COVID-19 in all settings as of 5pm on Tuesday  
relates only to tests performed under Pillar 1 of the UK Government's COVID-19 testing programme  
further information is available from [www.gov.uk](http://www.gov.uk)  
\* incidence rate - the cumulative number of confirmed cases of COVID-19 since 31 January 2020 divided by the total population of each PHE Centre multiplied by 100,000  
\*\* death rate - the total number of people who have died in England and had tested positive for COVID-19 since 31 January 2020 divided by the total population of each PHE Centre multiplied by 100,000

**POPULATION PYRAMID OF CASES**



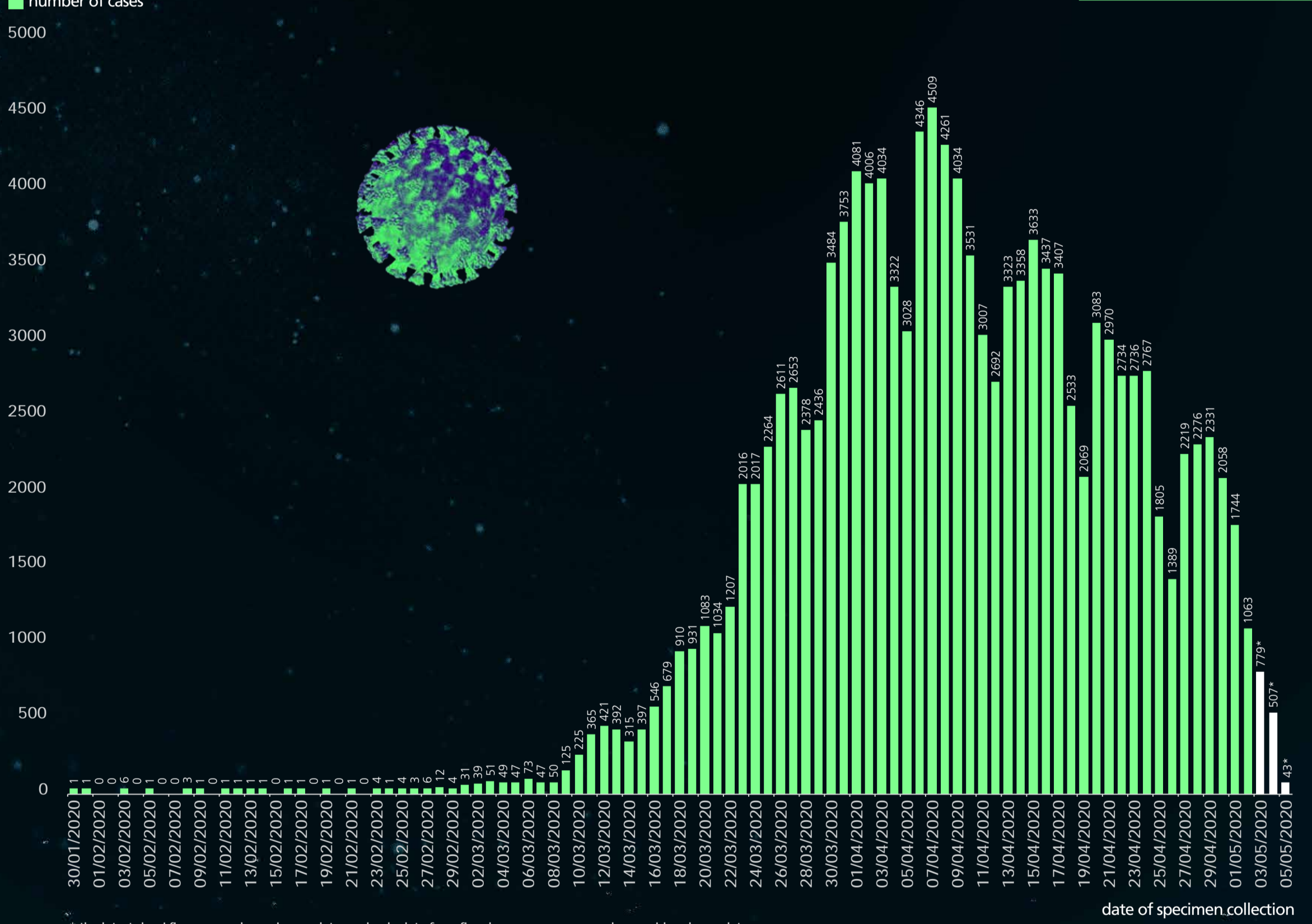
\* excludes 1,917 cases for whom age and/or sex details are currently unavailable  
\*\* median age is the middle value in a range - half of the cases are younger than this age and half are older

**POPULATION PYRAMID OF DEATHS**



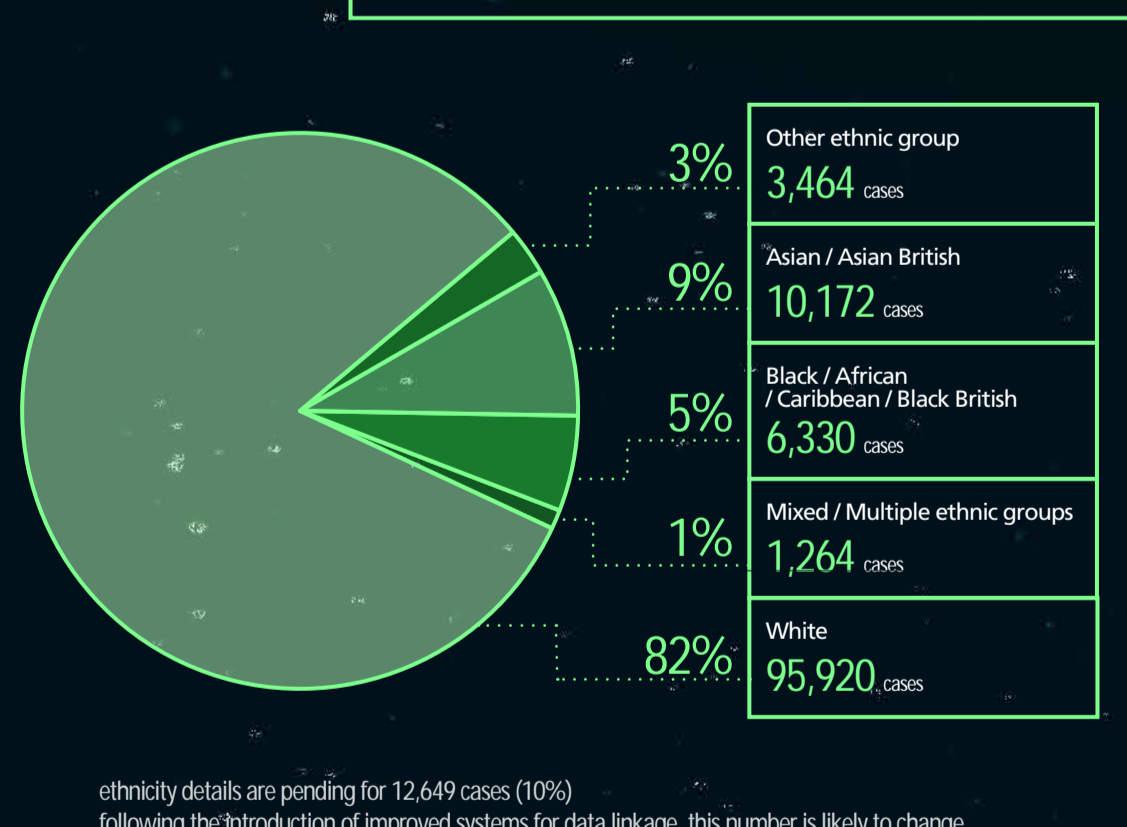
\* number of deaths with lab-confirmed COVID-19 in all settings as of 5pm on Tuesday

**EPIDEMIC CURVE**



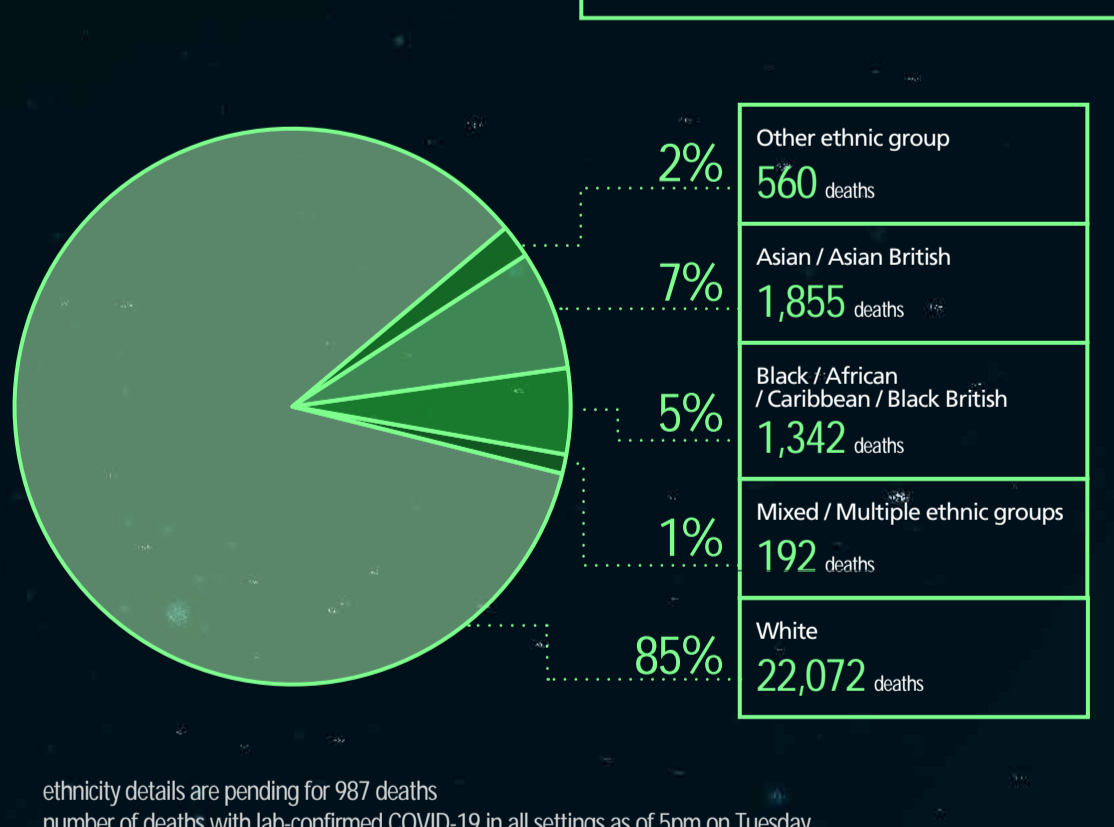
\* the latest days' figures are always incomplete, and only data from five days or more ago can be considered complete  
all data may be subject to small changes over time

**ETHNICITY OF CONFIRMED CASES**



ethnicity details are pending for 12,649 cases (10%) following the introduction of improved systems for data linkage, this number is likely to change

**ETHNICITY OF DEATHS**



ethnicity details are pending for 987 deaths number of deaths with lab-confirmed COVID-19 in all settings as of 5pm on Tuesday

data from:  
**15 March 2020 to 6 May 2020** in England

source: PHE Covid-19 Hospitalisations in England Surveillance System

