

The weekly surveillance report in England

Coronavirus (COVID-19)

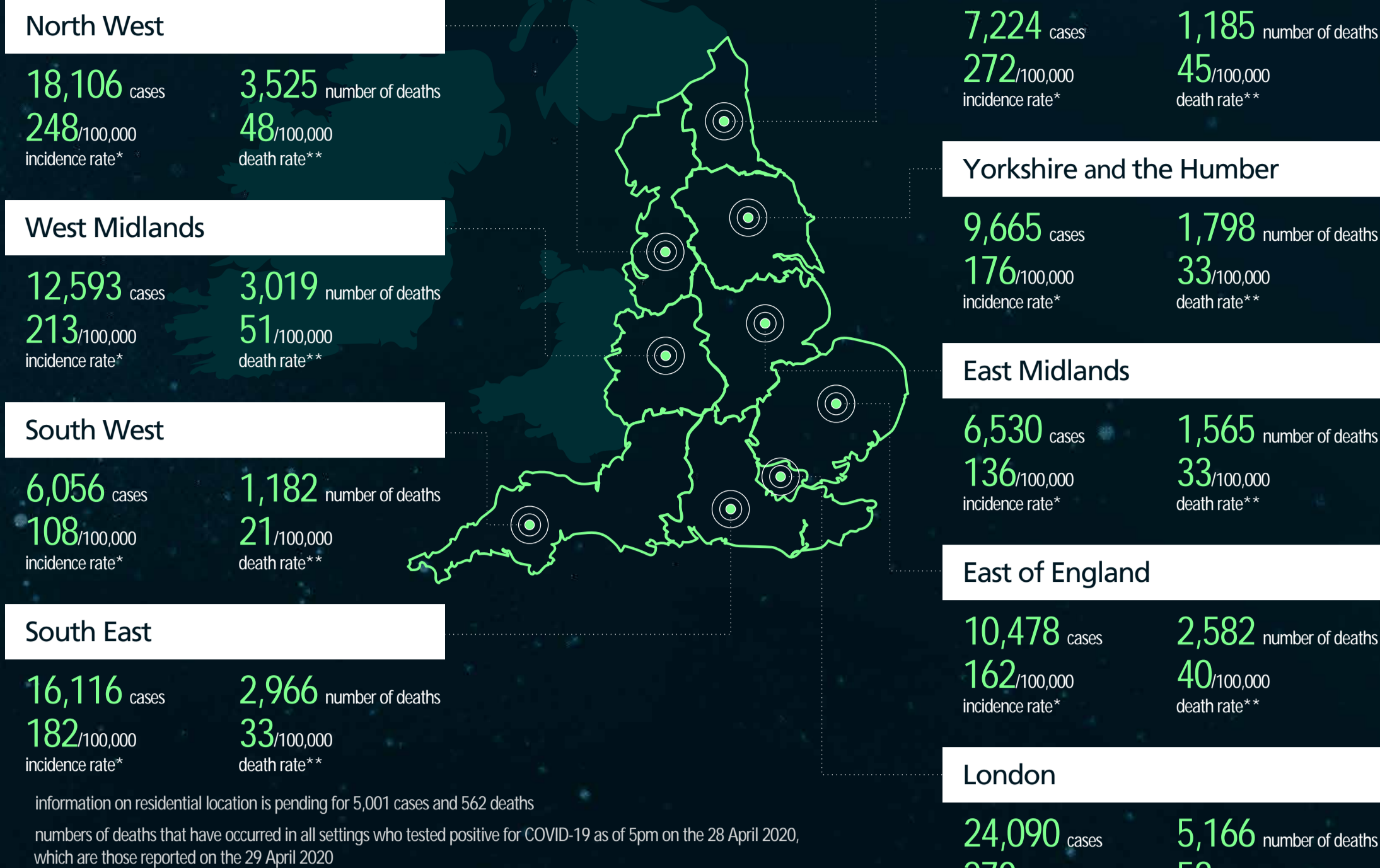
week: 23 April 2020 to 29 April 2020

cumulative data from:

31 January 2020 to 29 April 2020 in England

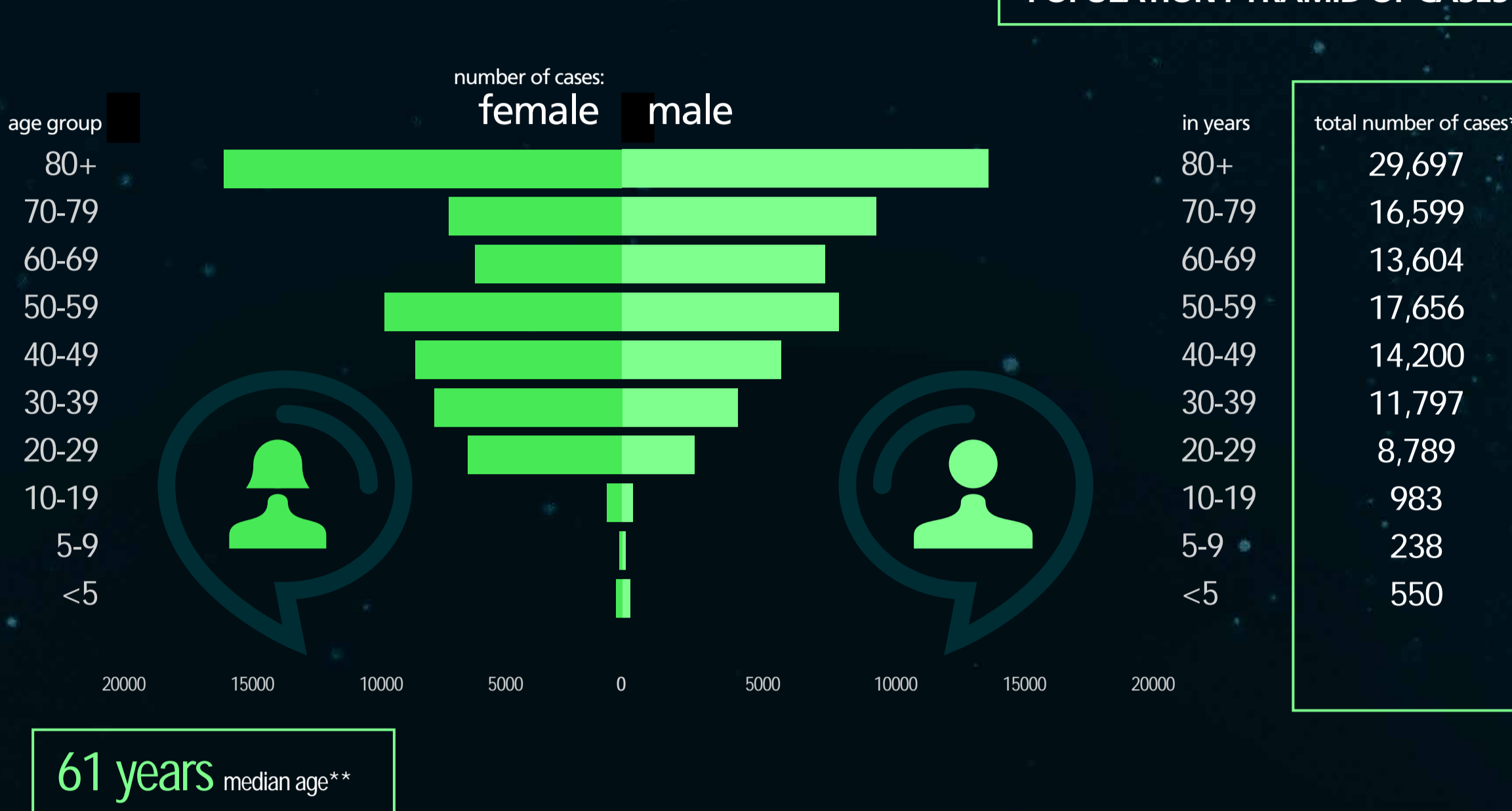


PHE CENTRE MAP

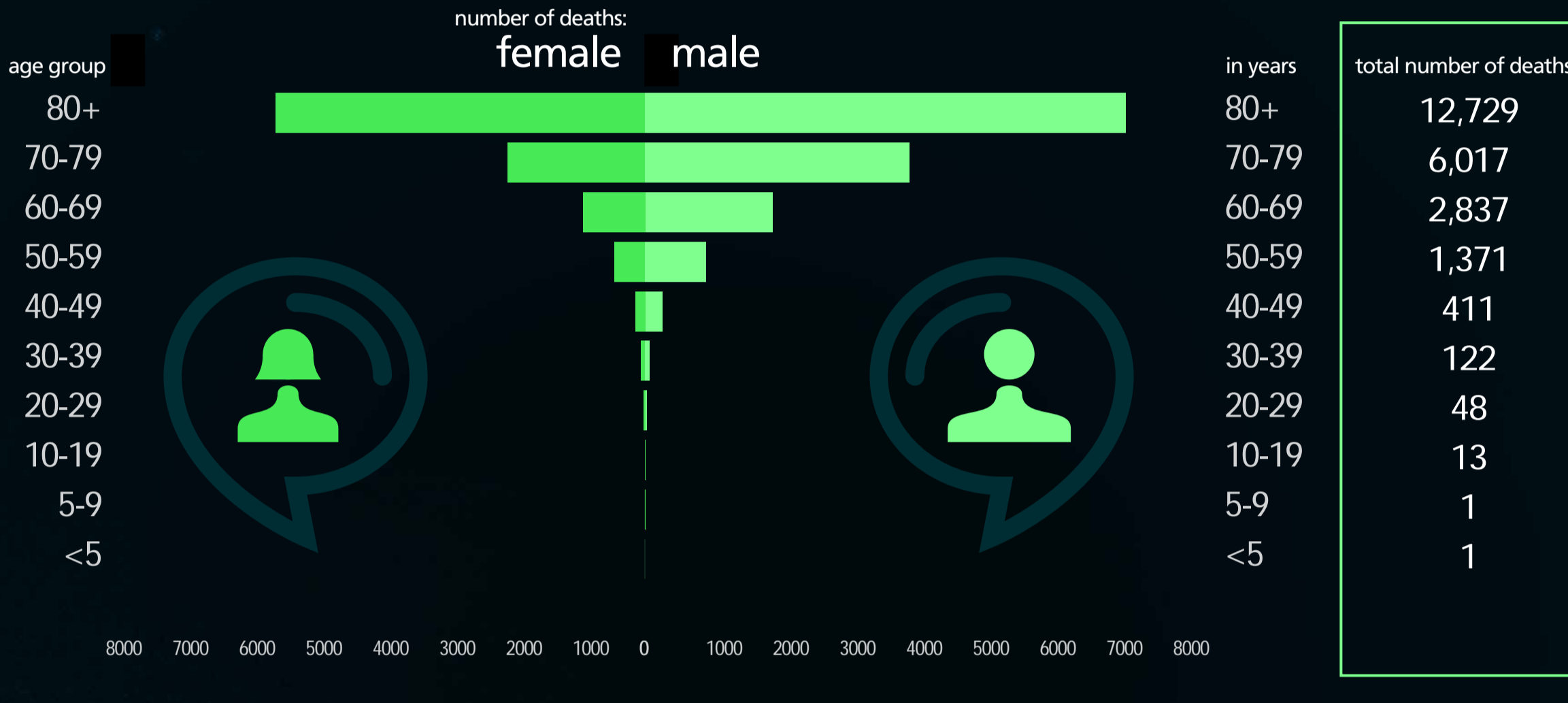


Information on residential location is pending for 5,001 cases and 562 deaths. Numbers of deaths that have occurred in all settings who tested positive for COVID-19 as of 5pm on the 28 April 2020, which are those reported on the 29 April 2020.

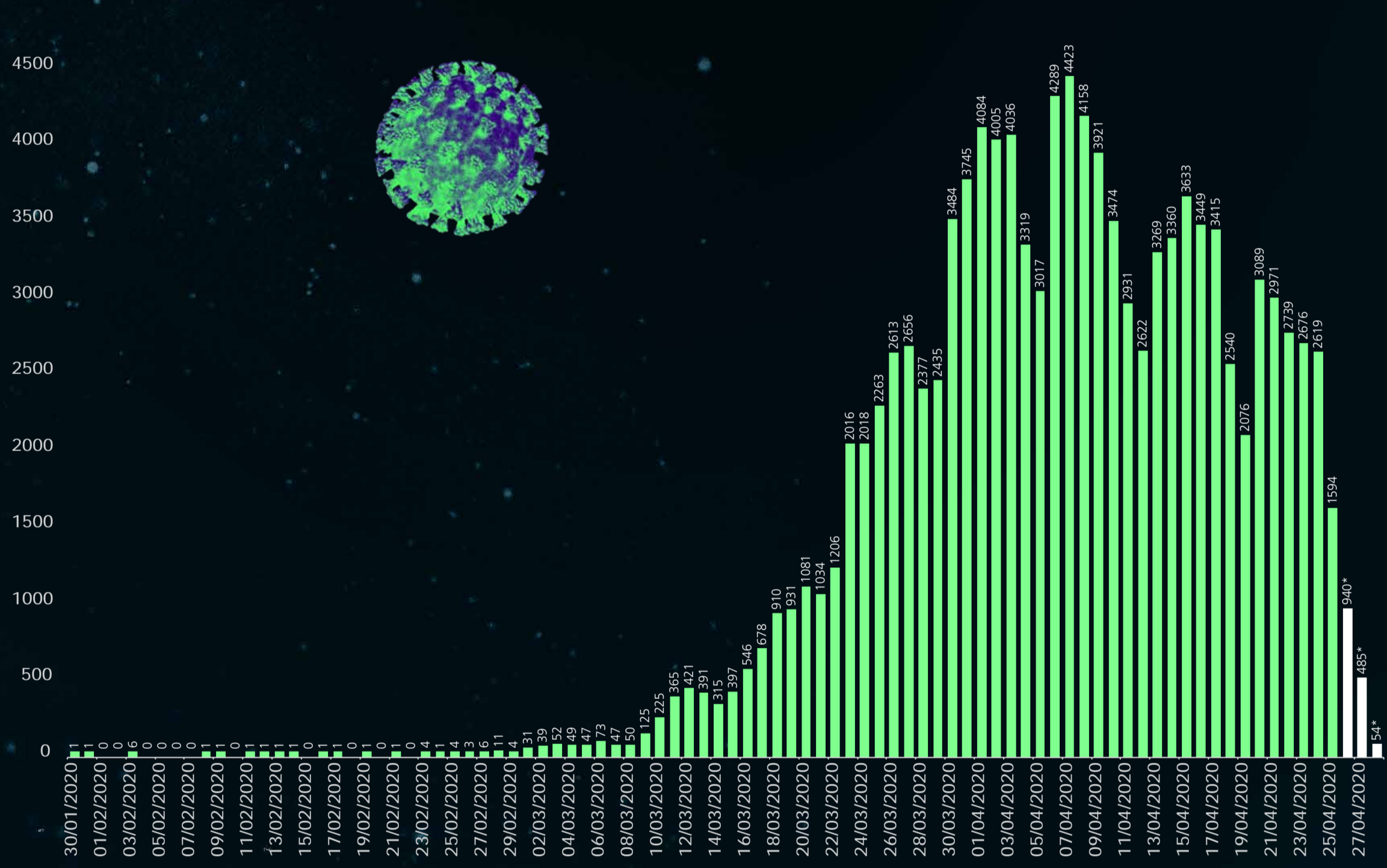
POPULATION PYRAMID OF CASES



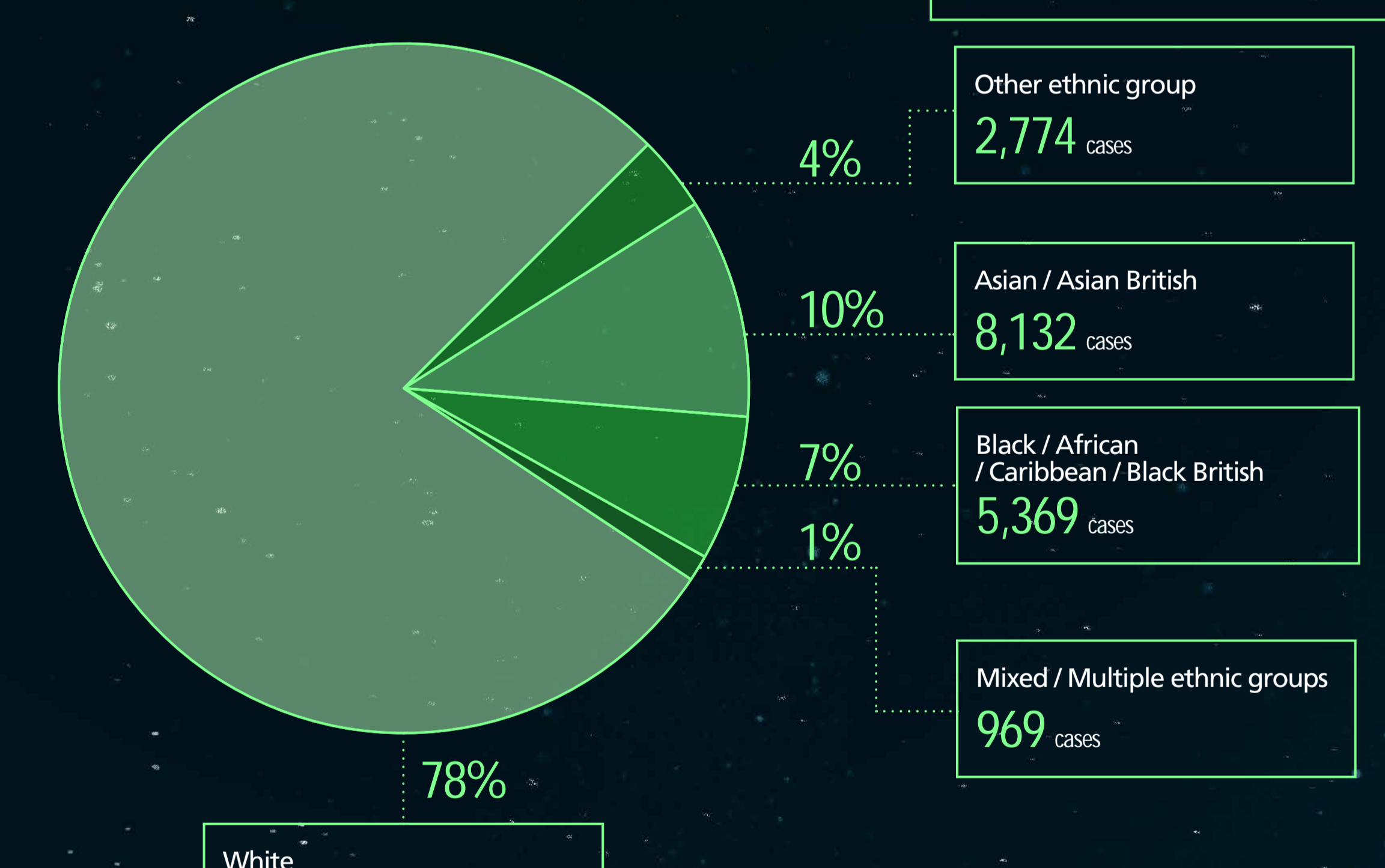
POPULATION PYRAMID OF DEATHS



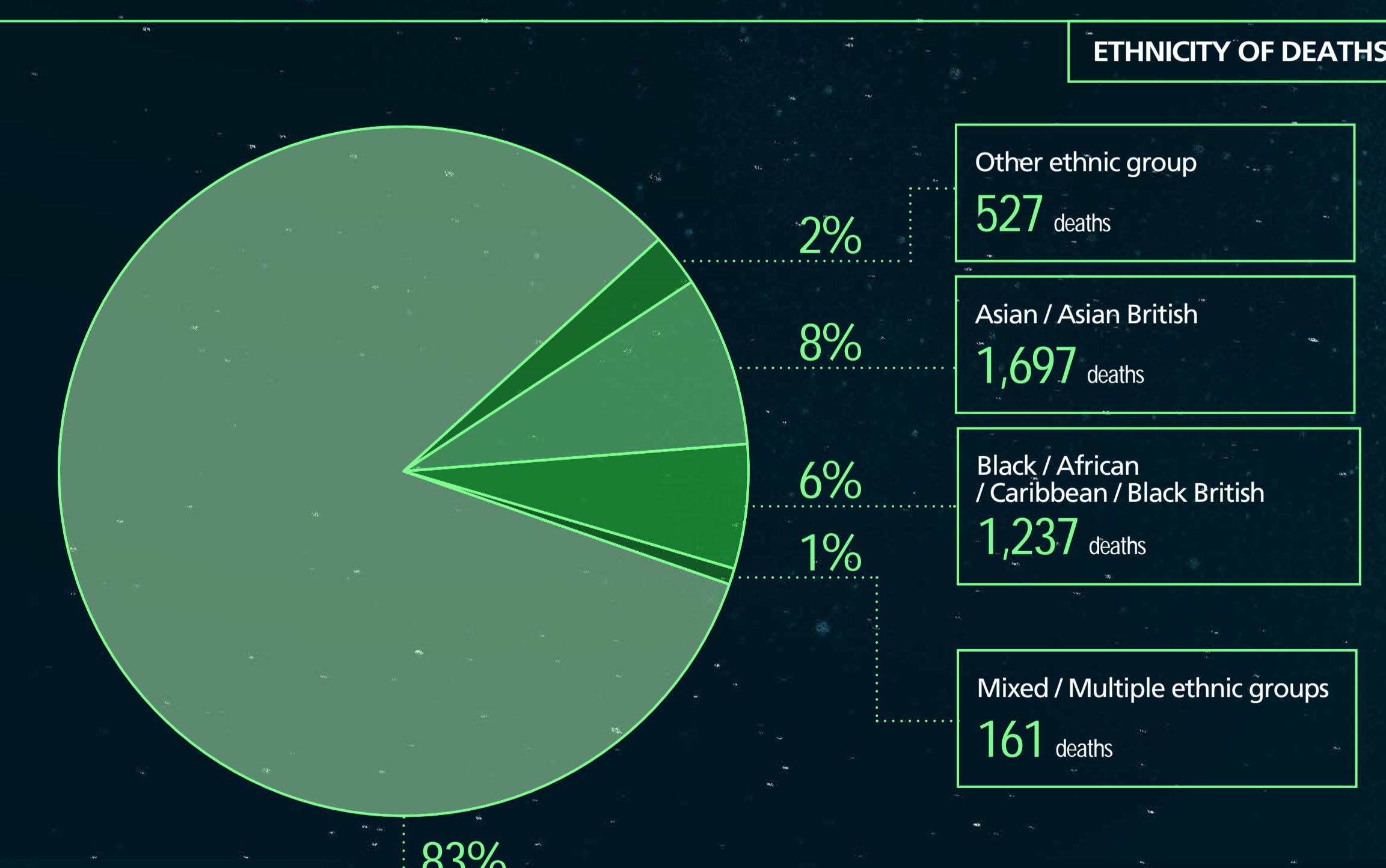
EPIDEMIC CURVE



ETHNICITY OF CONFIRMED CASES



ETHNICITY OF DEATHS

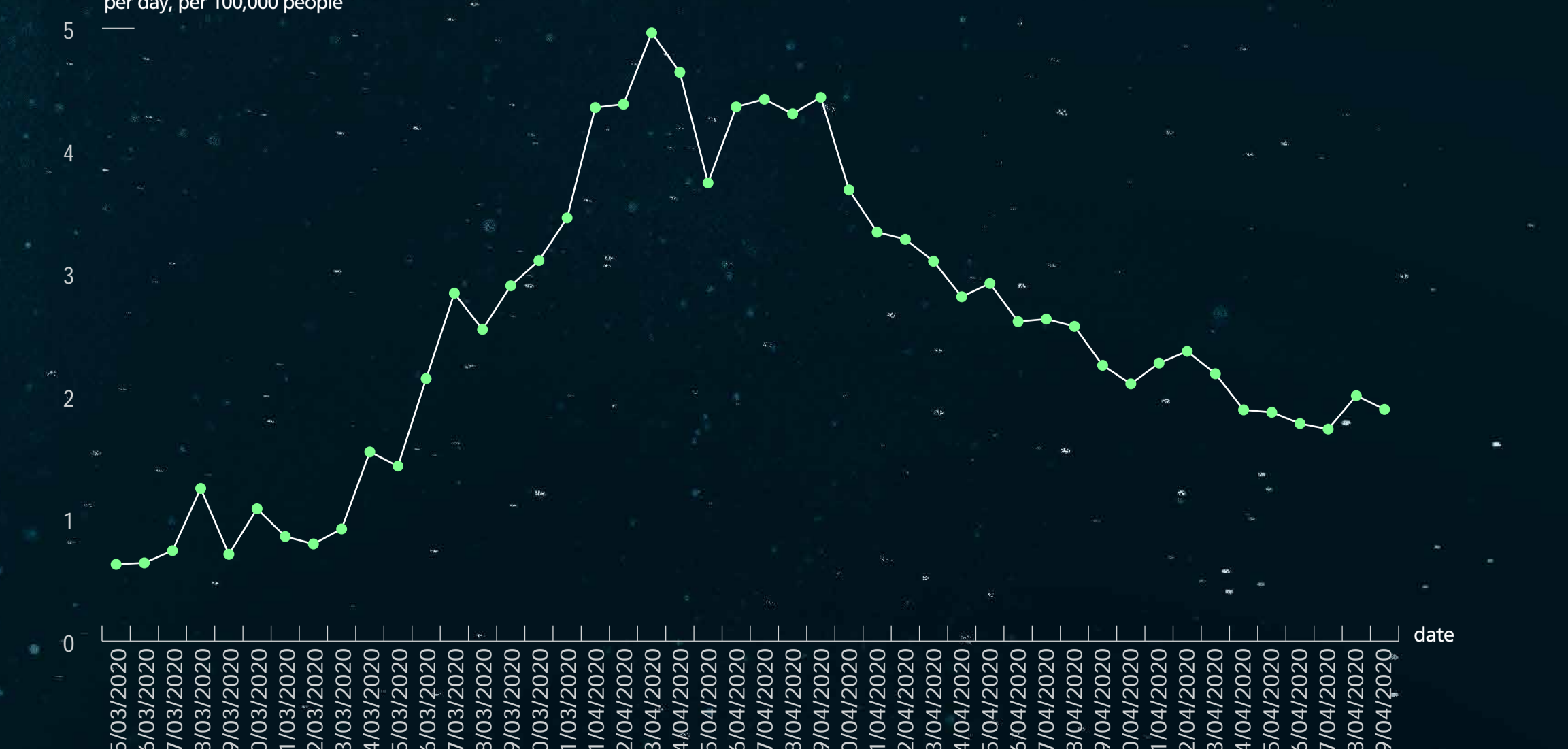


data from:

15 March 2020 to 29 April 2020 in England

source: PHE Covid-19 Hospitalisations in England Surveillance System

new hospital admissions with confirmed COVID-19 disease per day, per 100,000 people



STAY HOME ▶ PROTECT THE NHS ▶ SAVE LIVES

GOV.UK/coronavirus
NHS.UK/coronavirus