

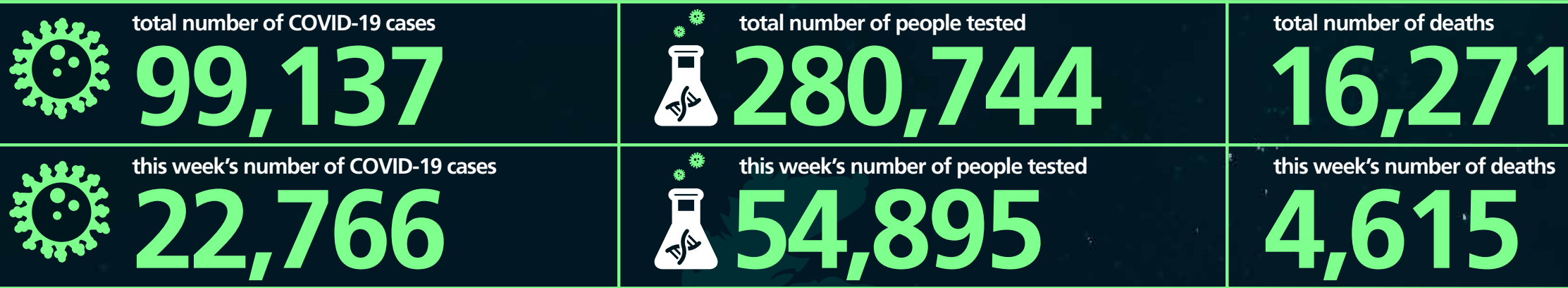
# The weekly surveillance report in England

Coronavirus (COVID-19)

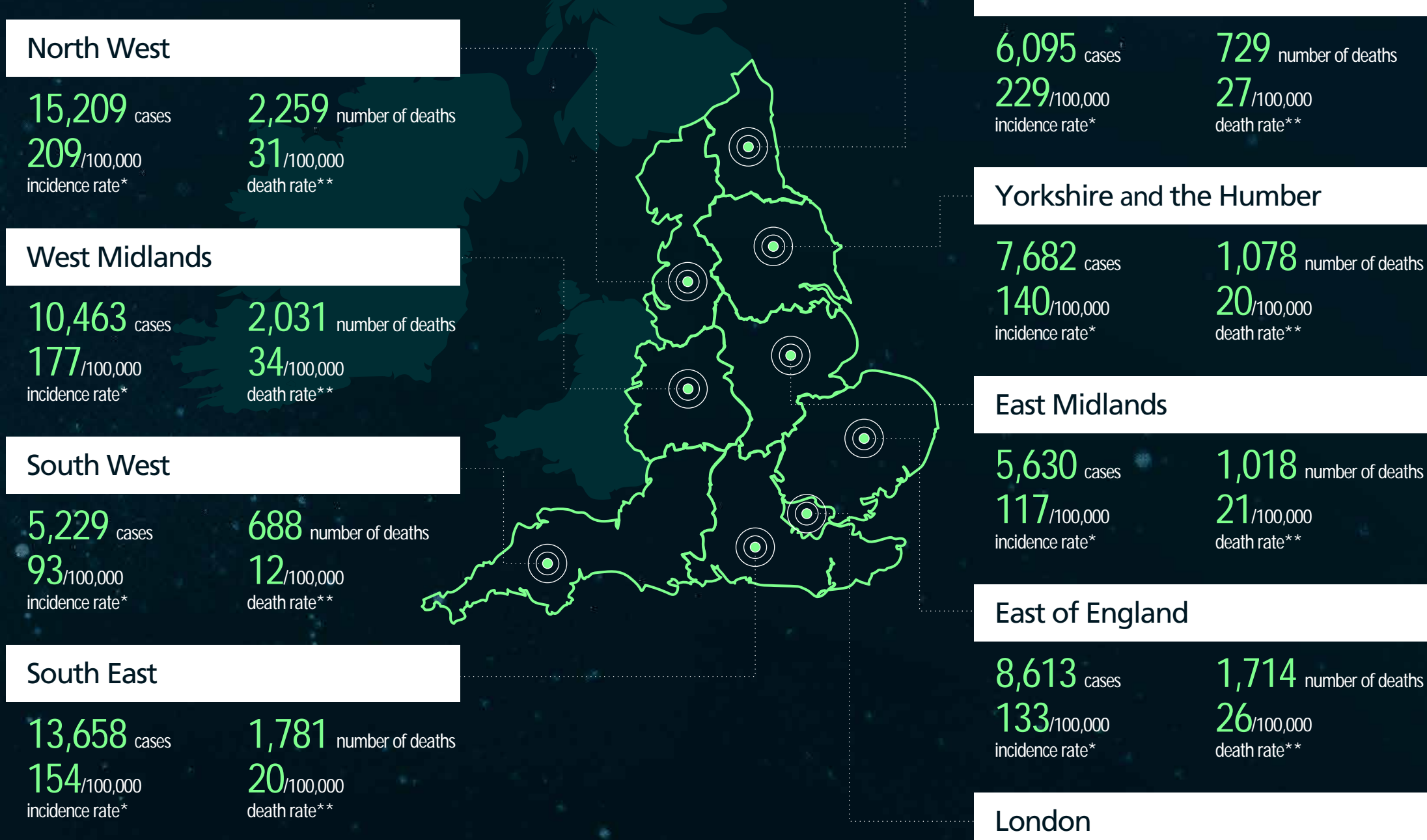
week: 16 April 2020 to 22 April 2020

cumulative data from:

## 31 January 2020 to 22 April 2020 in England

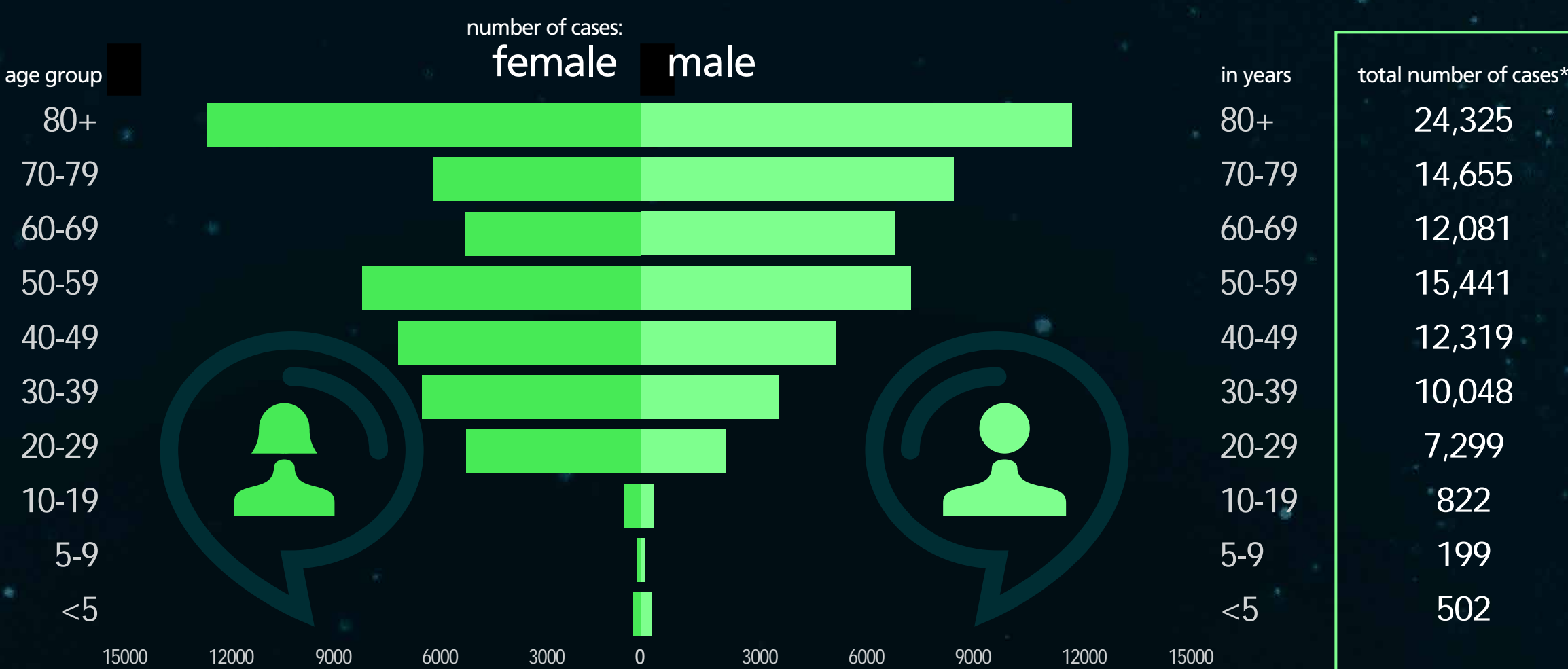


### PHE CENTRE MAP



information on residential location is pending for 4,206 cases and 1,429 deaths  
 numbers of deaths available as of 9am on the 22 April 2020 which are those reported on the 21 April 2020  
 \* incidence rate - the cumulative number of confirmed cases of COVID-19 since the 31st January 2020 divided by the total population of each PHE Centre multiplied by 100,000  
 \*\* death rate - the total number of people who have died in hospitals in England and had tested positive for COVID-19 at time of death since the 31st January 2020 divided by the total population of each PHE Centre multiplied by 100,000

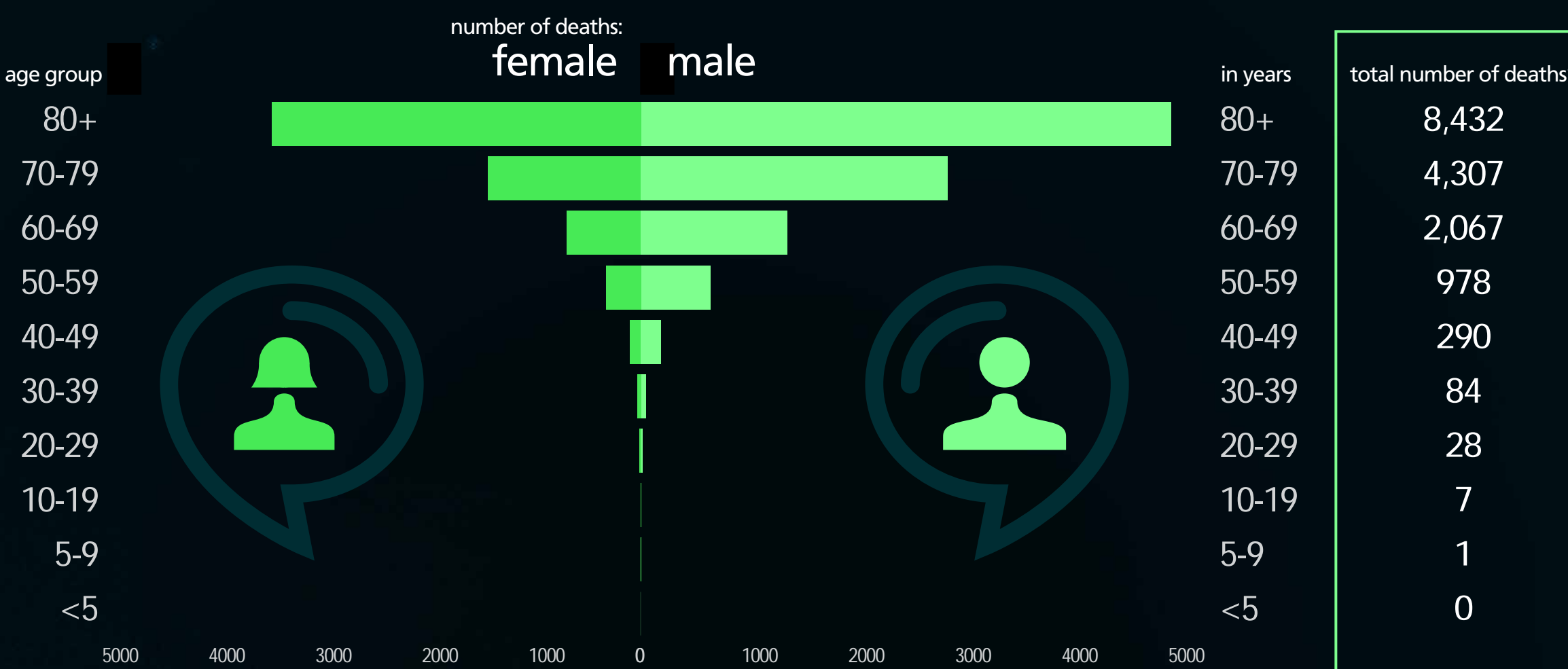
### POPULATION PYRAMID OF CASES



**61 years** median age\*\*

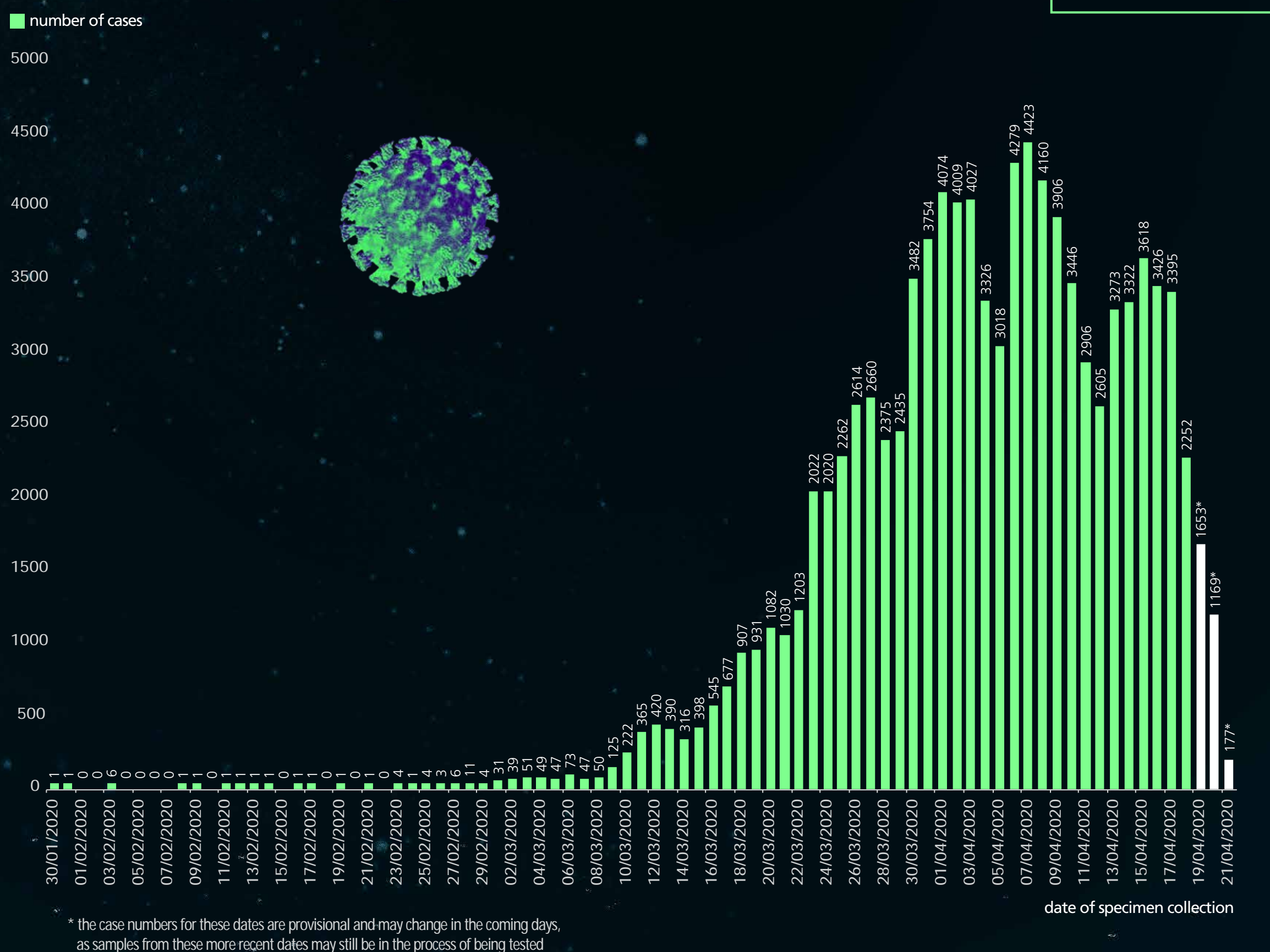
\* excludes 1,446 cases for whom age and/or sex details are currently unavailable  
 \*\* median age is the middle value in a range - half of the cases are younger than this age and half are older

### POPULATION PYRAMID OF DEATHS



\* age and/or sex information is pending for 77 deaths

### EPIDEMIC CURVE



\* the case numbers for these dates are provisional and may change in the coming days, as samples from these more recent dates may still be in the process of being tested

data from:

## 15 March 2020 to 22 April 2020 in England

source: PHE Covid-19 Hospitalisations in England Surveillance System

### HOSPITAL ADMISSIONS

new hospital admissions with confirmed COVID-19 disease per day, per 100,000 people

