



Public Health
England

Protecting and improving the nation's health

Human Animal Infections and Risk Surveillance (HAIRS) group

Qualitative assessment of the risk that
canine leishmaniosis presents to the UK
population

About Public Health England

Public Health England exists to protect and improve the nation's health and wellbeing and reduce health inequalities. We do this through world-leading science, research, knowledge and intelligence, advocacy, partnerships and the delivery of specialist public health services. We are an executive agency of the Department of Health and Social Care, and a distinct delivery organisation with operational autonomy. We provide government, local government, the NHS, Parliament, industry and the public with evidence-based professional, scientific and delivery expertise and support.

Public Health England

Wellington House

133-155 Waterloo Road

London SE1 8UG

Tel: 020 7654 8000

www.gov.uk/phe

Twitter: [@PHE_uk](https://twitter.com/PHE_uk)

Facebook: www.facebook.com/PublicHealthEngland

Prepared by: Human Animal Infections and Risk Surveillance (HAIRS) Group

For queries relating to this document, please contact: zoonoses@phe.gov.uk

© Crown copyright 2020

You may re-use this information (excluding logos) free of charge in any format or medium, under the terms of the Open Government Licence v3.0. To view this licence, visit [OGL](https://www.ogcl.gov.uk). Where we have identified any third party copyright information you will need to obtain permission from the copyright holders concerned.

Published January 2020

PHE Publications

gateway number: GW-1017

PHE supports the UN

Sustainable Development Goals



About the Human Animal Infections and Risk Surveillance group

This document was prepared by Public Health England (PHE) on behalf of the joint Human Animal Infections and Risk Surveillance (HAIRS) group.

HAIRS is a multi-agency cross-government horizon scanning and risk assessment group, which acts as a forum to identify and discuss infections with potential for interspecies transfer (particularly zoonotic infections).

Members include representatives from PHE, Department for the Environment, Food and Rural Affairs (Defra), Department of Health and Social Care (DHSC), Animal and Plant Health Agency, Food Standards Agency, Public Health Wales, Welsh Government, Health Protection Scotland, Scottish Government, Public Health Agency of Northern Ireland, and the Department of Agriculture, Environment and Rural Affairs for Northern Ireland



Qualitative risk assessment for canine leishmaniosis in the UK population

Date of this assessment	28 November 2019
Version	1
Reason for update	N/A
Completed by	PHE, APHA
External experts	Michelle Macrelli (APHA), Gauri Godbole (PHE)
Date of previous risk assessment	N/A
Date of initial risk assessment	N/A

Information on the risk assessment processes used by the HAIRS group can be found at www.gov.uk/government/publications/hairs-risk-assessment-process

Summary of risk assessment for canine leishmaniosis in the UK population

Background	Reports of canine leishmaniosis in untravelling dogs in UK	
Summary of the assessment	Probability	VERY LOW
	Impact	VERY LOW to MODERATE
Level of confidence in assessment of risk	Good	
Action(s)/ Recommendation(s):	Raise awareness with vets and pet owners Maintain overview of changing epidemiology and/or evidence Consider the need to institute systematic surveillance for sandflies	

Assessing the risk to the UK population from new and emerging infections

Step One: Assessment of the probability of infection in UK population

The likelihood of an infectious threat causing infection in the UK human population. Where a new agent is identified there may be insufficient information to carry out a risk assessment and this should be clearly documented. *Please read in conjunction with the Probability Algorithm. Where the evidence may be insufficient to give a definitive answer to a question the alternative is also considered with the most likely outcome shown in solid colour and the alternative outcome in hatched colour.*

QUESTION	OUTCOME*	QUALITY OF EVIDENCE
i) Is this a recognised human disease?	Yes	Good
<p>The earliest recognisable description of leishmaniasis in the Old World dates from circa 1885 BC, in ancient Egypt (1). Leishmaniasis is the term used to cover a diverse group of diseases of humans and other mammals (in which it is usually called leishmaniosis), caused by obligate intracellular protozoan parasites of the genus <i>Leishmania</i>. It is prevalent in tropical and some temperate regions of Africa, Asia, South America and parts of Europe. The parasites are phagocytosed into mononuclear phagocytes of the spleen, liver and bone marrow where they replicate causing cell rupture and release of new parasites. These can then infect new cells, including macrophages in the blood stream. The parasite-infected blood cells are then picked up in the blood meal of sandflies, of the genus <i>Phlebotomus</i> in the Old World and <i>Lutzomyia</i> in the New World.</p> <p>Globally, there are more than 20 human-infective <i>Leishmania</i> species, and more than 90 sandfly species implicated in their transmission (2). There is some debate about the involvement of other arthropod vectors, including fleas, ticks and biting midges, but scientific evidence is limited (3-6). For development in the insect host, the parasite requires specific triggers (pH and temperature dependent) to develop from the amastigote form (in the mammal host) to the promastigote form. This form then binds to insect midgut cells, replicates and moves to the anterior midgut and mouthparts to be delivered to the mammal host in the next blood meal (7). The ability of the parasite to downregulate certain digestive enzymes in the midgut is most likely to explain their vector species specificity.</p>		

In most settings, the life cycle of *Leishmania* parasites is indirect, requiring both a vector and a mammalian host (either domestic or sylvatic) and humans become infected when they come into contact with the domestic or sylvatic transmission cycle. Transmission is primarily zoonotic, with reservoir hosts varying by parasite species and by location. Only transmission of *L. donovani* (causative agent of visceral leishmaniasis (VL)) and *L. tropica* (causative agent of cutaneous leishmaniasis (CL)) is mainly anthroponotic (ie has a human reservoir).

In humans, non-vectorial transmission is considered extremely rare and is limited to autochthonous transmission via blood transfusion and/or organ transplantation. For certain species of *Leishmania*, particularly *L. infantum* causing VL in Europe and North Africa, the domestic reservoir is the dog and *L. infantum* is therefore considered the causative agent of canine leishmaniasis (CanL).

Disease in humans (all *Leishmania* spp)

Most human infections with *Leishmania* remain asymptomatic. Clinical manifestations of leishmaniasis are varied but can broadly be classified into 3 main forms: cutaneous, mucosal (ML) and visceral. Which form of leishmaniasis develops, and the severity of signs and symptoms, depends on a complex interplay of infecting parasite species, vector biology and host factors (8). Among host factors, immunosuppression is an important risk factor for the development of ML and VL. Leishmaniasis is treatable and curable; however, this depends on a functioning immune system: people with HIV/VL co-infection are at increased risk of treatment failure, relapse and death.

Cutaneous leishmaniasis (CL) is the most common and least severe form. The skin lesions typically evolve from papules to nodules to ulcers. These are usually painless, and often self-healing but this may take many months. There can be permanent scarring, which may lead to disability and/or stigma. Globally, there are an estimated 600,000 to 1 million new cases of CL per year, occurring mainly in South and Central America, the Mediterranean, the Middle East and Central Asia (2, 9).

In **mucosal leishmaniasis** (ML), the naso-oropharyngeal mucosa is affected. ML can also arise simultaneously with initial skin sores (mucocutaneous leishmaniasis), or more commonly as sequelae after their apparent resolution. If untreated, ulceration can result in the partial or total destruction of the mucosa, and severe disfigurement. Most cases occur in Bolivia, Peru, Brazil and Ethiopia (2).

Visceral leishmaniasis (VL; also known as kala-azar) is the most serious form of leishmaniasis. VL is a systemic disease, particularly affecting the spleen, liver and bone marrow; it is often fatal if untreated. Symptoms vary but include malaise, fever, weight loss, anaemia, and enlargement of the spleen, liver and lymph nodes. During or after treatment, some patients develop post kala-azar dermal leishmaniasis - a macular, papular or nodular rash, usually most prominent on the face. WHO estimates

that there are 50,000 to 90,000 new cases of VL annually worldwide, with a majority occurring in the Indian subcontinent, East Africa, and Brazil, where VL is highly endemic (2). South and Central America, the Mediterranean, the Middle East and Central Asia are endemic at a lower level (9).

Epidemiology of human leishmaniasis in Europe

In Europe, leishmaniasis (visceral and rarely cutaneous) is mostly due to *L. infantum*, with sporadic CL caused by *L. tropica* in Greece. *L. donovani* has been implicated in both VL and CL, and recently been detected in sporadic cases in Cyprus and Turkey (10, 11). In the WHO European region in 2016 (12), 4,046 CL cases were reported, 2862 (71%) of which were autochthonous and the rest imported. 391 VL cases were reported, of which 90% were autochthonous. Turkey has consistently borne over half the burden of CL since 1998, with a peak of 4,187 cases in 2004. With Uzbekistan, Israel and Kazakhstan, these 4 countries accounted for over 90% of the CL burden in the Region in 2016. For VL, Azerbaijan, Georgia, Greece, Italy and Uzbekistan accounted for over 70% of cases reported in 2016. (Additional data source: WHO Global Health Observatory data to 2017, <http://apps.who.int/gho/data/node.main.NTDLEISH?lang=en>)

The main domestic reservoir of *L. infantum* is the domestic dog, although other mammals can also act as reservoir hosts, for example a recent peri-urban outbreak in Spain was linked to hares (13). The delay in reporting and diagnosis in human cases can mean it is very difficult to ascertain whether a sylvatic, domestic or anthroponotic transmission cycle is involved, in the absence of information about the vector and mammalian reservoir.

Leishmaniasis is currently re-emerging in Europe and the wider Mediterranean region. In the 1990s, endemic areas in Europe saw a rise in VL cases in adults, linked to co-infections with HIV (8). Conflict areas in the Middle East have seen an important recrudescence of CL, and it is thought that migration and forced displacement from these areas may be contributing to the emergence in the region (8, 11).

Leishmaniosis in dogs (14-16)

Canine leishmaniosis (CanL) is primarily caused by *L. infantum*. CanL is endemic in southern Europe (17-19) and prevalences of infection (estimated by serologic and molecular diagnosis) can be as high as 60% in exposed populations (20), including at least 2.5 million seropositive dogs (21, 22). Other *Leishmania* spp. have also been found to infect dogs in other European countries including *L. donovani* in Cyprus (23), and *L. tropica* in parts of Greece (24).

When clinically apparent, CanL can manifest as a chronic self-limiting disease, or a severe non-self-limiting illness. Skin lesions are the most obvious clinical manifestation and include alopecia, different forms of dermatitis and onychogryphosis (excessive

development and curving of the claws). The incubation period varies from 3 months to several years. Symptomatic treatment for dogs in endemic areas is required to manage the disease. In non-endemic areas, treatment may be lifelong (drug of choice is allopurinol). Dogs with clinical or subclinical infection may be infectious to sandflies for life, as the parasite can remain in immunologically privileged sites. Susceptibility to development of clinical disease may vary according to breed of dog. Cats are also susceptible to infection but are not known to show clinical signs.

ii) Is this disease endemic in the UK?	No	Good
---	-----------	-------------

The UK is not endemic for leishmaniasis (9), and the phlebotomine sandfly species that are known or suspected vectors are not currently present in the UK (25). While there have been no known locally acquired cases of human leishmaniasis in the UK, increasing numbers of CanL in travelled dogs and imported rescued dogs from endemic areas have been documented, creating a potential reservoir of infected animals. However, the accepted definition of a reservoir host (as opposed to a maintenance host) is one which maintains and acts as a source of the parasite in nature, leading to onward transmission and given the lack of effective vector-borne transmission from dogs to humans in the UK, there is still uncertainty about the risk these infected dogs present to the human population. This is particularly relevant for *L. infantum* infections in domestic dogs. The recent reports of leishmaniosis in dogs in 2 unconnected households alongside historical reports suggests that imported infected dogs do occasionally arrive in the UK after travel. However, the most recent case described in the *Veterinary Record* (26) was not officially tested and the report suggested the animal concerned had never travelled abroad before, but there was no detail on whether the dog could have acquired infection through transplacental transmission.

Data on leishmaniasis and leishmaniosis occurrence in the UK are incomplete, because of difficulties associated with diagnosis and under-reporting. Studies in endemic settings indicate that a large proportion of both human and canine infections remain asymptomatic or subclinical, suggesting that many imported infections may never be diagnosed. Additionally, leishmaniasis is not a notifiable disease (in either humans or animals) and is not included in national surveillance schemes; data are thus compiled on a voluntary basis. For human cases, reporting of laboratory diagnoses is now required in England and Wales (Public Health regs; www.gov.uk/guidance/notifiable-diseases-and-causative-organisms-how-to-report).

Imported human clinical cases are often referred to the Hospital for Tropical Diseases (HTD), London, which houses the PHE National Parasitology Reference Laboratory (PRL). Between 1996 and 2018, the PRL reported 666 cases to PHE, an average of 29 (range 3-59) new cases per year [personal communication]. These were predominantly CL (223 laboratory-confirmed cases between 1998-2009 (27)), with small numbers of VL and ML cases.

In 2005, a single probably autochthonous case of CL was reported in scientific literature: a patient who had no recent travel history but who distinctly recollected having developed the skin lesion after an insect bite in Surrey; the source of infection was thought to be an imported infected sandfly (28). Additionally, venereal transmission was implied in a case from the 1950s, in which a CL lesion in a woman with no travel history was traced back to an asymptomatic recurrence of VL, originally acquired in Africa, in her husband (29). To our knowledge, these are the only autochthonous cases of human leishmaniasis in the UK.

There is no specific surveillance for non-notifiable animal diseases. Cases in companion animals were collected by Defra's Dog and Cat Travel And Risk Information (DACTARI) voluntary reporting scheme during 2003-2008 but have not been routinely recorded since. DACTARI recorded 40 laboratory-confirmed CanL cases, in addition to 2 notifications from 2001-2002 (30). The origin of these reports was mainly through the Pet Travel Scheme, 9 through quarantine, and 3 were cases with unknown travel origin. Studies by the University of Bristol suggest that the true number of cases is much larger (31, 32). Aiming to quantify the CanL reservoir in the UK, the 2005-7 study recorded 257 laboratory-confirmed cases, but this only included dogs diagnosed at, or advised on by, the University of Bristol (32). It was estimated that 96% of cases for which a travel history was known had spent at least 6 months in endemic countries. A more recent study estimated prevalences of clinical CanL to be ranging from 0.007 to 0.04%, with the highest values in southern England (33).

In 2019, 2 autochthonous cases of CanL were identified in dogs that had no history of travel outside the UK (26, 34). The first dog was presumed to be infected through direct contact with another dog in the same household, which had originally been imported from Spain and was euthanised after a diagnosis of CanL 6 months earlier (34). The second dog had no history of contact with known CanL-infected dogs, but its owners had recently holidayed in Spain; although the authors speculated that the owners could have brought back an infected sandfly in their transport, luggage, or clothes, this was considered unlikely. However, infection through incidental socialising with an infected dog could not be excluded (26).

The possibility of sporadic autochthonous cases of CanL in the UK had previously been suggested (but not proven) (32, 35). The reports are consistent with similar cases of non-vectorial transmission of CanL from other non-endemic settings (including the USA, Germany and Finland). These include demonstrated transplacental/vertical transmission (36, 37); suspected venereal transmission (36, 38); and suspected transmission through wounds or bites, acquired during fights or play with other dogs in the same household or kennel (38-42). CanL can also be transmitted via blood transfusions (43-45).

iii) Are there routes of introduction into the UK?	Yes/No	Good
<p>While individual phlebotomine sandflies could accidentally be imported from endemic areas, e.g. in luggage of returning travellers, they are fragile and have specific geospatial, temperature and humidity requirements, and are thus not expected to survive journeys by aircraft, or to establish widely in the UK, even if in the intermediate or longer term, climate change may expand the natural range of phlebotomine sandflies.</p> <p><i>Leishmania spp.</i> could also be imported into the UK by humans or domestic animals (particularly dogs) infected abroad or by imports of contaminated blood, blood products or germinal products. Plasma, cellular fraction and whole blood are also a risk, due to parasite presence in macrophages and other phagocytic cells, and as free-living amastigote stages in plasma.</p> <p>Per year, the Hospital for Tropical Diseases in London sees approximately 2 human cases of VL (46, 47) and 20 cases of CL (27), all imported. About 75% of the VL cases reported between 1985 and 2013 (n < 100) were acquired in the Mediterranean, with fewer cases acquired in Africa and Asia, and one in South America. The CL cases reported between 1998 and 2009 (n = 223) were mostly imported from Central and South America (57%), and Asia (19%). These are probably underestimates of case numbers, given the large proportion of asymptomatic and subclinical infections and the lack of surveillance. Nonetheless, imported infections are few, considering the large numbers of travellers to and migrants from endemic areas. (The WHO Global Health Observatory database shows 21 imported CL cases in 2017 and 17 in 2016. For VL cases, there were no data.)</p> <p>Humans infected in endemic areas may be the source of onwards transmission via blood transfusions, shared needles (e.g. outbreaks in IDU in Spain), sexual contact or congenital transmission. These non-vectorial modes of transmission are considered extremely rare and would not lead to endemicity of leishmaniasis.</p> <p>Infected dogs with travel history to endemic areas could be responsible for direct transmission via bites, venereal or vertical transmission, or (theoretically) via donated blood used for transfusions (48). Canine blood transfusions are on the rise, and over 10,000 dogs in the UK are now registered as blood donors. To qualify as donors, dogs need to meet certain criteria such as being in general good health and having a normal temperature, heart rate and respiration. Among other requirements, owners must also confirm that the dog has not been abroad. However, because of prohibitive costs, formal testing is not conducted for bloodborne diseases that are not prevalent in the UK.(49) The adoption of harmonised rules for travelling with pets to the UK in 2012 has meant there has been an increase in the number of dogs of travelling to the UK. The majority (80%) are UK origin which are returning from a visit to Europe.</p>		

<p>Dogs from rehoming centres in endemic areas could be considered a high-risk group for leishmania, as indeed would any dog which had spent time in an endemic country. Although insecticide treatment could be used to prevent sandfly bites, it is not known how frequently or how effectively it is used generally in Europe.</p>		
iv) Are there effective control measures in place to mitigate against these?	No	Good
<p>There are no effective control measures against introduction of phlebotomine sandflies into the UK. Additionally, surveillance for phlebotomine sandflies is currently limited in the UK. However, in Europe, the European Centre for Disease Prevention and Control (ECDC) and the European Food Safety Authority (EFSA) have established VectorNet, an initiative to collect data on vectors of human and animal diseases, including phlebotomine sandflies (50). This network regularly produces maps showing the distribution of phlebotomine sandfly detections in Europe (25).</p> <p>There are no requirements for travelling pets or companion animals to be tested for Leishmaniosis prior to or after travel. This is not a notifiable disease in the European legislation nor a reportable or listed disease in animals in the UK. While there is guidance available to pet owners who take their animals abroad to endemic areas, it is not known if these preventive measures are widely used. Methods to limit exposure to sandflies in endemic areas include staying inside and keeping dogs inside during night time when sandflies are active (sunset to sunrise), and the use of insecticide sprays, insecticide-treated bednets, and protective clothing. For dogs, additional preventive measures include deltamethrin-impregnated collars; this reduced the proportion of phlebotomine sandflies that took blood meals and survived by over 90% for at least 8 months after the collars were applied (51).</p> <p>There are also 2 vaccines (CaniLeish® and Letifend® (52) licensed in the UK and EU that provide partial protection against active infection and clinical disease (14, 53). Prophylactic medication with domperidone (a serotonin agonist) is being investigated in dogs in endemic area, but data on efficacy and safety are currently limited (14). Allopurinol, a parasite protein inhibitor used as treatment for leishmaniosis could also have some prophylactic effect but again, nothing has been licensed.</p> <p>There are no cost-effective steps to prevent <i>L. infantum</i> from becoming established in the UK, given there are no sandfly vectors, so this would only concern preventing the establishment of small household transmission foci. These measures could include voluntary screening of dogs that are imported from <i>Leishmania</i>-endemic regions, implementing similar screening among the contact population of any dogs presenting with CVL, regular follow-up to ensure conversion does not occur (an important consideration given the chronic nature of the infection and often delayed disease presentation), exclusion of subclinically infected dogs from blood donation, vaccination and use of topical insecticides for dogs travelling to endemic areas. (49)</p>		

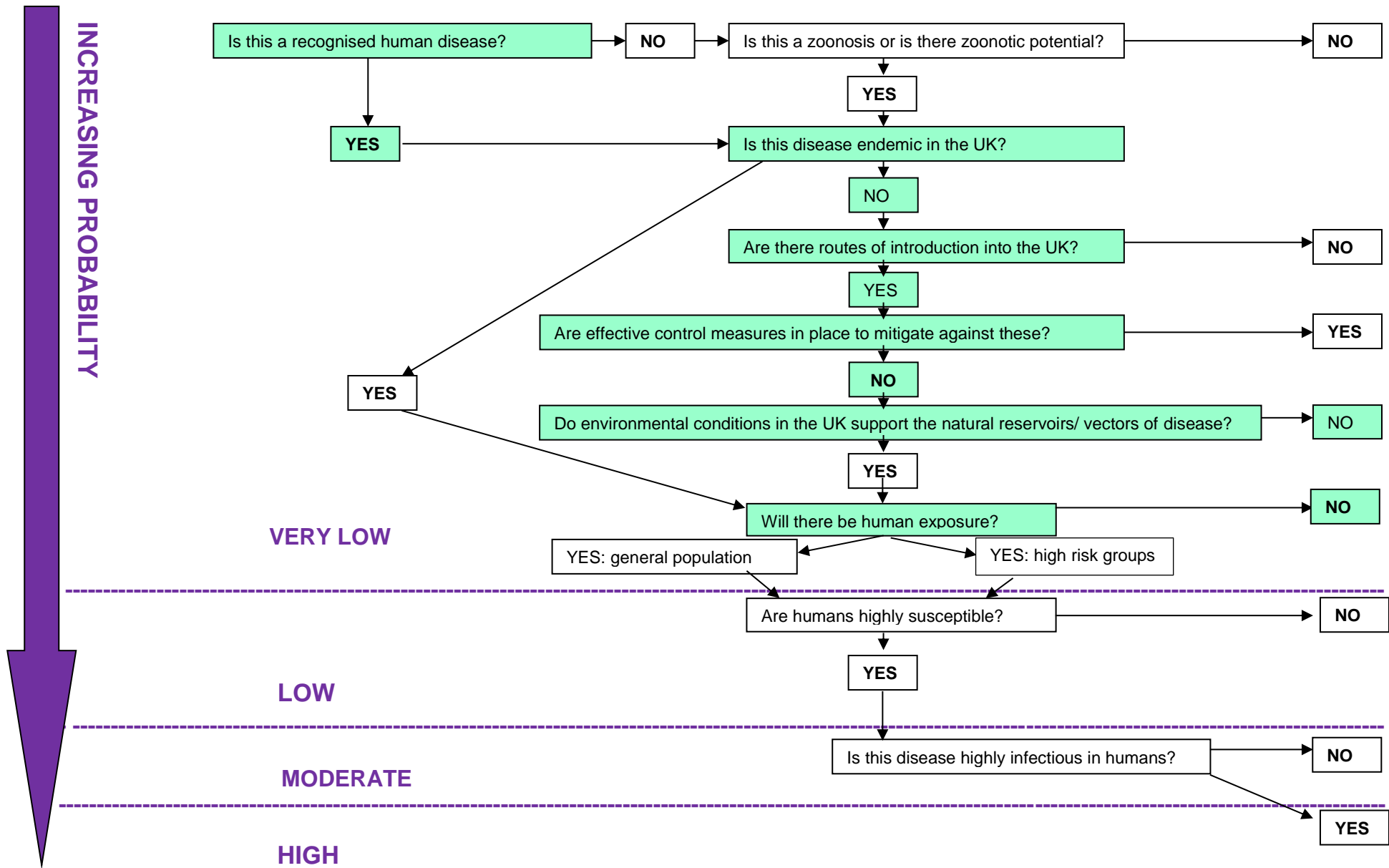
v) Do environmental conditions in the UK support the natural reservoirs/vectors of disease?	No	Good
<p>For the majority of cases a vector-reservoir transmission cycle is required therefore if one part of the cycle does not exist, transmission cannot be completed.</p> <p>The <i>L. infantum</i> main reservoir is the domestic dog, although wild canids, cats, and hares have also been known to act as reservoirs. There are around 8 million domestic dogs in the UK, but only a small proportion travel to endemic areas for substantial periods of time there each year and could potentially return with infection. The non-vectorial transmission cycle can occur in the UK environment. In Europe, transmission cycles for <i>L. donovani</i> and <i>L. tropica</i> are anthroponotic – humans are the principal reservoir host and could present a non-vectorial transmission cycle. Reservoir hosts for these species are therefore abundant in the UK.</p> <p>The vectors of Old World <i>Leishmania</i> species, <i>Phlebotomus</i> sandflies, are not currently present in the UK. Phlebotomines require a warm and humid environment, and in Europe their range is largely limited to the Mediterranean basin. However, entomological studies in Europe have documented a northwards expansion of the range of several sandfly species implicated in <i>Leishmania</i> transmission (54). Particularly, as of January 2019, the established vector <i>Phlebotomus perniciosus</i> and the suspected vector <i>Phlebotomus mascittii</i> have been detected as far north as northern France, Belgium (<i>P. mascittii</i> only), and western Germany (25, 55, 56).</p>		
vi) Will there be human exposure?	No	Good
<p>Between humans, non-vectorial transmission is considered extremely rare. Direct dog-to-human transmission has never been reported. <i>L. infantum</i> in dogs produces some skin lesions and the parasites themselves can be occasionally found in skin biopsies around the lesions or chancres. Parasites can be found in the cell rich blood fractions, organs and plasma of infected animals, therefore there is only a very small theoretical possibility that a dog with an open wound would bite a human and transfer blood. The parasites are not present in saliva or respiratory fluids.</p> <p>Hence, other theoretical transmission cycles (blood transfusion, organ transplantation, sexual transmission) can be ruled out for dog to human transmission, and, in the absence of sandflies, the limited numbers of <i>Leishmania</i>-infected dogs or other reservoir species pose few risks to humans.</p>		

Qualitative assessment of the risk that canine leishmaniosis presents to the UK population

vii) Are humans highly susceptible?	No	Good
<p>The majority of human infections with <i>Leishmania sp.</i>, particularly <i>L. infantum</i> and <i>L. donovani</i>, are thought to be asymptomatic (57-59). In symptomatic infections, the spectrum of severity is broad, and can range from subclinical to severe disease. Immunocompromised people and those at risk of malnutrition are more likely to develop clinical VL. In the EU each year there are a few hundred cases of locally acquired <i>Leishmania</i> reported. Nevertheless, there is likely to be underreporting and delayed diagnosis for the less severe cases. The prognosis of severe VL is poor without treatment.</p>		
viii) Is the disease highly infectious in humans?	No	Good
<p>There is no human to human transmission without the presence of a sandfly stage unless through blood donation and organ transplantation. Humans who are infected carry the parasite in the cells of the reticuloendothelial system or phagocytic cells such as macrophages.</p>		

The **PROBABILITY** of human infection with canine *Leishmania* species in the UK population: **VERY LOW**

Qualitative assessment of the risk that canine leishmaniosis presents to the UK population



Step 2: Assessment of the impact on human health

The scale of harm caused by the infectious threat in terms of morbidity and mortality: this depends on spread, severity, availability of interventions and context. *Please read in conjunction with the Impact Algorithm. Where the evidence may be insufficient to give a definitive answer to a question the alternative is also considered with the most likely outcome shown in solid colour and the alternative outcome in hatched colour.*

Question	Outcome*	Quality of Evidence
i) Is there human-to-human spread?	No	Good
<p>For <i>Leishmania sp.</i>, non-vectorial human to human transmission is exceptionally rare. Indirect human-to-human spread, via sandflies, is the most common transmission route for the 2 anthroponotic species, <i>L. donovani</i> and <i>L. major</i>. For <i>L. infantum</i>, a domestic zoonotic vector borne transmission cycle is most common.</p>		
ii) Is there zoonotic or vector borne spread?	Yes	Good
<p><i>Leishmania</i> parasites are transmitted between mammals by sandfly species in the genera <i>Phlebotomus</i> (in the Old World) or <i>Lutzomyia</i> (in the Americas). Different parasite species have different reservoir hosts and main vectors. Most species are zoonotic, with the exception of <i>L. donovani</i> and <i>L. tropica</i> that are primarily anthroponotic.</p> <p><i>L. infantum</i> (zoonotic VL): domestic dogs, foxes, jackals, rabbits, hares, rodents, cats, other mammals. Various <i>Phlebotomus spp.</i> <i>L. major</i> (zoonotic CL): rodents, dogs. Vector = <i>Ph. papatasi</i> [primary form in WHO EURO region]</p> <p>Direct transmission of visceral leishmaniasis in the absence of sandfly vectors from dogs to humans has never been documented.</p>		
iii) For zoonoses/vector-borne disease is the animal host/vector present in the UK?	Yes/No	Good
<p>Phlebotomine sandflies are the only proven vector for <i>Leishmania</i> species in Europe and are not currently known to be present in the UK. The primary reservoir host for <i>L. infantum</i>, the agent of zoonotic VL in Europe and occasionally CL, is the domestic dog, with secondary reservoir hosts including wild canids, wild rabbits, hares, rats and humans. Hence, suitable reservoir hosts are present in the UK.</p>		

iv) Is the population susceptible?	Yes	Good
There is currently no registered vaccine for human leishmaniasis. Recovery from natural leishmanial infection is in many cases immunising against further infection (8), however treatment for severe cases of VL is necessary and often complex and lengthy.		
v) Does it cause severe disease in humans?	Yes/No	Good
The majority of human <i>Leishmania</i> infections are asymptomatic. The most common clinical form, CL, is the least severe, and is often self-healing. VL does cause severe disease and is often fatal if left untreated. Immunosuppression, and particularly coinfection with HIV, is an important risk factor for severe disease, relapses after treatment, and death (60).		
vi) Would a significant number of people be affected?	No	Good
In the absence of sandflies, only travellers to endemic areas. On very rare occasions, humans could be infected after accidental importation of sandflies or by non-vectorial transmission, but these would not contribute significantly to case numbers. Direct transmission from dogs to humans has never been documented.		
vii) Is it highly infectious to humans?	No	Good
No. Infection of humans normally requires a bite by an infected female sandfly. Even in areas of the Mediterranean where <i>L. infantum</i> is highly endemic and sandflies are present, incidence in humans is low (eg, in Spain, 100-200 human cases reported each year). In non-endemic areas where sandflies are absent, infections in humans with no history of travel, presumably acquired by means of an imported sandfly or through non-vectorial transmission, are extremely rare.		
viii) Are effective interventions available?	Yes/No	Good
<p>The prevention and control of leishmaniasis in highly endemic areas or in epidemic situations require a combination of intervention strategies, including vector control, disease surveillance and early diagnosis, effective case management, and control of the animal reservoir.</p> <p>Preventive measures / vector control: When visiting endemic areas, preventive measures should be taken to limit exposure to sandflies. These include staying inside and keeping dogs inside during night time when sandflies are active (sunset to sunrise), and the use of insecticide sprays, -treated nets, and protective clothing. For dogs, additional preventive measures include deltamethrin-impregnated collars, and 2 vaccines (CaniLeish® and Letifend®(56)) that provide partial protection against active infection and clinical disease (14, 53). The main controversy regarding CanL vaccines is that they do not block the establishment</p>		

of infection. This could potentially keep an infected dog (without clinical disease) healthy, but possibly able to spread infection to people and dogs. Moreover, all vaccines are recommended solely for clinically healthy and seronegative dogs.(52) Prophylactic medication with domperidone is being investigated in dogs in endemic area, but data on efficacy and safety are currently limited (14). Allopurinol has also been investigated as a preventive treatment but again, not proven.

Surveillance and early diagnosis: In dogs, early diagnosis improves the chances of recovery, and treatment reduces infectiousness, but will not prevent a relapse, hence awareness of the disease among owners and veterinarians is important.

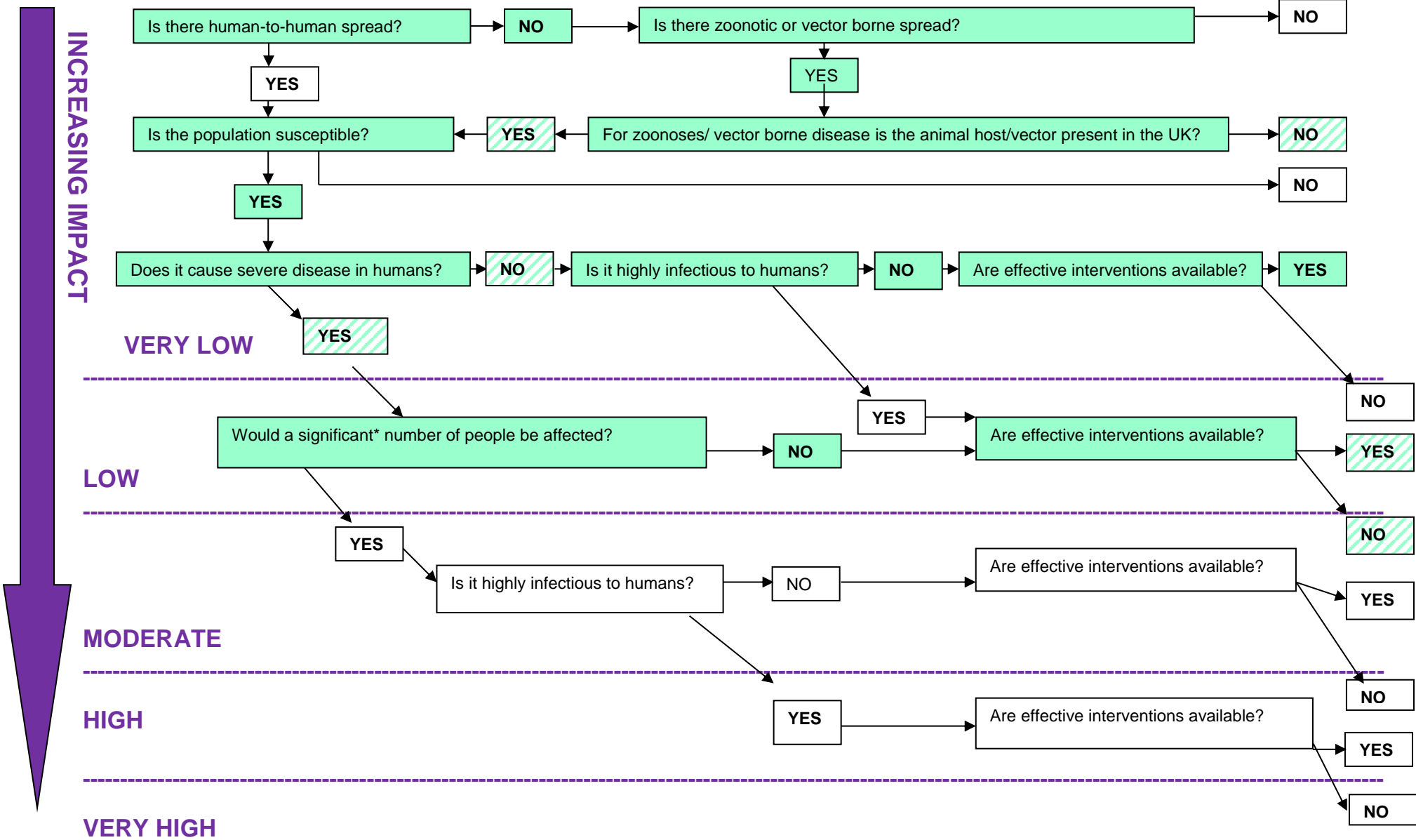
Case management: Leishmaniasis is treatable in humans, with safe and effective treatments available particularly for VL. Pentavalent antimonials have long been the first-line treatment, but, particularly where resistance has developed, this is being replaced by miltefosine, paramycin and/or liposomal amphotericin B (61). Treatment reduces the risks of developing disabling complications and of death, however its success is dependent on the patient's immune function. Treatment options are more limited for CL, but oral treatments are being developed (62).

For canine leishmaniosis treatment is available, but this is a long-term (often life-long) regimen. It slows down the progression of infection and improves disease manifestation, as well as reducing infectiousness, but its efficacy in eliminating of parasites is limited (14).

Control of the animal reservoir: Early recognition, diagnosis and treatment of clinical infection is vital to improve prognosis, prevent spread and allow early long-term management planning for individual patients. Raising awareness and vigilance for leishmaniosis as well as other common parasites in imported pets is important. The implications for canine blood banking facilities and the potential for transmission in the absence of competent sandfly vectors, need further work, as the practice is not well understood.

The **IMPACT** of canine leishmaniosis on human health in the UK: **VERY LOW** to **MODERATE**

Qualitative assessment of the risk that canine leishmaniosis presents to the UK population



*This question has been added to differentiate between those infections causing severe disease in a handful of people and those causing severe disease in larger numbers of people. 'Significant' is not quantified in the algorithm but has been left open for discussion and definition within the context of the risk being assessed.

References

1. WHO. The Leishmaniasis: timeline of facts 2018 [Available from: www.who.int/leishmaniasis/disease/Leishmaniasis-interactive-timelines/en/].
2. WHO. Fact sheet: Leishmaniasis 2019 [Available from: www.who.int/news-room/fact-sheets/detail/leishmaniasis].
3. Dantas-Torres F. Ticks as vectors of Leishmania parasites. Trends Parasitol. 2011;27(4):155-9.
4. Coutinho MT, Linardi PM. Can fleas from dogs infected with canine visceral leishmaniasis transfer the infection to other mammals? Vet Parasitol. 2007;147(3-4):320-5.
5. Otranto D, Dantas-Torres F. Fleas and ticks as vectors of Leishmania spp. to dogs: caution is needed. Vet Parasitol. 2010;168(1-2):173-4.
6. Seblova V, Sadlova J, Carpenter S, Volf P. Speculations on biting midges and other bloodsucking arthropods as alternative vectors of Leishmania. Parasit Vectors. 2014;7:222.
7. Dostalova A, Volf P. Leishmania development in sand flies: parasite-vector interactions overview. Parasit Vectors. 2012;5:276.
8. Burza S, Croft SL, Boelaert M. Leishmaniasis. Lancet. 2018;392(10151):951-70.
9. WHO. Leishmaniasis: Epidemiological situation 2018 [Available from: www.who.int/leishmaniasis/burden/en/].
10. Antoniou M, Gramiccia M, Molina R, Dvorak V, Volf P. The role of indigenous phlebotomine sandflies and mammals in the spreading of leishmaniasis agents in the Mediterranean region. Euro Surveill. 2013;18(30):20540.
11. Koltas IS, Eroglu F, Alabaz D, Uzun S. The emergence of Leishmania major and Leishmania donovani in southern Turkey. Trans R Soc Trop Med Hyg. 2014;108(3):154-8.
12. WHO. Surveillance of leishmaniasis in the WHO European Region, 2016 and Global leishmaniasis surveillance update, 1998–2016. Weekly Epidemiological Record. 2018;93(40):521–40.
13. Arce A, Estirado A, Ordoñas M, Sevilla S, Garcia N, Moratilla L, et al. Re-emergence of leishmaniasis in Spain: community outbreak in Madrid, Spain, 2009 to 2012. Euro Surveill. 2013;18(30):20546.
14. EFSA Panel Animal Health and Welfare. Scientific Opinion on canine leishmaniosis. EFSA Journal. 2015;13(4).
15. Elsheikha H, Wright I. Leishmaniosis in dogs and cats. Companion Animal. 2019;24(Suppl. 3):8-12.

16. Miro G, Lopez-Velez R. Clinical management of canine leishmaniosis versus human leishmaniasis due to *Leishmania infantum*: Putting "One Health" principles into practice. *Vet Parasitol.* 2018;254:151-9.
17. Otranto D, Napoli E, Latrofa MS, Annoscia G, Tarallo VD, Greco G, et al. Feline and canine leishmaniosis and other vector-borne diseases in the Aeolian Islands: Pathogen and vector circulation in a confined environment. *Vet Parasitol.* 2017;236:144-51.
18. Otranto D, Dantas-Torres F, Mihalca AD, Traub RJ, Lappin M, Baneth G. Zoonotic Parasites of Sheltered and Stray Dogs in the Era of the Global Economic and Political Crisis. *Trends Parasitol.* 2017;33(10):813-25.
19. Maia C, Cardoso L. Spread of *Leishmania infantum* in Europe with dog travelling. *Vet Parasitol.* 2015;213(1-2):2-11.
20. Solano-Gallego L, Riera C, Roura X, Iniesta L, Gallego M, Valladares JE, et al. *Leishmania infantum*-specific IgG, IgG1 and IgG2 antibody responses in healthy and ill dogs from endemic areas. Evolution in the course of infection and after treatment. *Vet Parasitol.* 2001;96(4):265-76.
21. Moreno J, Alvar J. Canine leishmaniasis: epidemiological risk and the experimental model. *Trends Parasitol.* 2002;18(9):399-405.
22. Athanasiou LV, Kontos VI, Saridomichelakis MN, Rallis TS, Diakou A. A cross-sectional sero-epidemiological study of canine leishmaniasis in Greek mainland. *Acta Trop.* 2012;122(3):291-5.
23. Antoniou M, Haralambous C, Mazeris A, Pratlong F, Dedet JP, Soteriadou K. *Leishmania donovani* leishmaniasis in Cyprus. *Lancet Infect Dis.* 2008;8(1):6-7.
24. Christodoulou V, Antoniou M, Ntais P, Messaritakis I, Ivovic V, Dedet JP, et al. Re-emergence of visceral and cutaneous leishmaniasis in the Greek Island of Crete. *Vector Borne Zoonotic Dis.* 2012;12(3):214-22.
25. ECDC, EFSA. Phlebotomine sandflies maps Stockholm: ECDC; [Available from: <https://ecdc.europa.eu/en/disease-vectors/surveillance-and-disease-data/phlebotomine-maps>].
26. Wright I, Baker S. Leishmaniosis in a dog with no history of travel outside the UK. *Vet Rec.* 2019;184(12):387-8.
27. Wall EC, Watson J, Armstrong M, Chiodini PL, Lockwood DN. Epidemiology of imported cutaneous leishmaniasis at the Hospital for Tropical Diseases, London, United Kingdom: use of polymerase chain reaction to identify the species. *Am J Trop Med Hyg.* 2012;86(1):115-8.
28. Darne S, Sinclair SA. A sandfly in Surrey? A case of cutaneous leishmaniasis in the United Kingdom without history of recent travel to an endemic area. *Clin Exp Dermatol.* 2006;31(1):155-6.
29. Symmers WS. Leishmaniasis acquired by contagion: a case of marital infection in Britain. *Lancet.* 1960;1(7116):127-32.

30. Defra. DACTARI: Summary report 2009 [Available from: <https://webarchive.nationalarchives.gov.uk/20090731150601/http://www.defra.gov.uk/animalh/diseases/veterinary/dactari/reports/summary-report.htm>].
31. Impact of pet travel on animal and public health. *Vet Rec.* 2008;162(14):429-30.
32. Shaw SE, Langton DA, Hillman TJ. Canine leishmaniosis in the United Kingdom: a zoonotic disease waiting for a vector? *Vet Parasitol.* 2009;163(4):281-5.
33. Silvestrini P, Batchelor D, Allenspach K, Maunder C, Seth M, Mas A, et al. Clinical leishmaniasis in dogs living in the UK. *J Small Anim Pract.* 2016;57(9):453-8.
34. McKenna M, Attipa C, Tasker S, Augusto M. Leishmaniosis in a dog with no travel history outside of the UK. *Vet Rec.* 2019;184(14):441.
35. Harris MP. Suspected transmission of leishmaniasis. *Vet Rec.* 1994;135(14):339.
36. Naucke TJ, Lorentz S. First report of venereal and vertical transmission of canine leishmaniosis from naturally infected dogs in Germany. *Parasit Vectors.* 2012;5:67.
37. Boggiatto PM, Gibson-Corley KN, Metz K, Gallup JM, Hostetter JM, Mullin K, et al. Transplacental transmission of *Leishmania infantum* as a means for continued disease incidence in North America. *PLoS Negl Trop Dis.* 2011;5(4):e1019.
38. Karkamo V, Kaistinen A, Nareaho A, Dillard K, Vainio-Siukola K, Vidgren G, et al. The first report of autochthonous non-vector-borne transmission of canine leishmaniosis in the Nordic countries. *Acta Vet Scand.* 2014;56:84.
39. Duprey ZH, Steurer FJ, Rooney JA, Kirchhoff LV, Jackson JE, Rowton ED, et al. Canine visceral leishmaniasis, United States and Canada, 2000-2003. *Emerg Infect Dis.* 2006;12(3):440-6.
40. Gaskin AA, Schantz P, Jackson J, Birkenheuer A, Tomlinson L, Gramiccia M, et al. Visceral leishmaniasis in a New York foxhound kennel. *J Vet Intern Med.* 2002;16(1):34-44.
41. Naucke TJ, Amelung S, Lorentz S. First report of transmission of canine leishmaniosis through bite wounds from a naturally infected dog in Germany. *Parasit Vectors.* 2016;9(1):256.
42. Daval N, Marchal C, Guillaumot L, Hue T, Ravel C, Keck N, et al. First report of autochthonous non-vectorial canine leishmaniasis in New Caledonia, south-western Pacific: implications for new control measures and recommendations on importation of dogs. *Parasit Vectors.* 2016;9:108.
43. de Freitas E, Melo MN, da Costa-Val AP, Michalick MS. Transmission of *Leishmania infantum* via blood transfusion in dogs: potential for infection and importance of clinical factors. *Vet Parasitol.* 2006;137(1-2):159-67.
44. Owens SD, Oakley DA, Marryott K, Hatchett W, Walton R, Nolan TJ, et al. Transmission of visceral leishmaniasis through blood transfusions from infected English foxhounds to anemic dogs. *J Am Vet Med Assoc.* 2001;219(8):1076-83.

45. Tabar MD, Roura X, Francino O, Altet L, Ruiz de Gopegui R. Detection of *Leishmania infantum* by real-time PCR in a canine blood bank. *J Small Anim Pract.* 2008;49(7):325-8.
46. Fletcher K, Issa R, Lockwood DN. Visceral leishmaniasis and immunocompromise as a risk factor for the development of visceral leishmaniasis: a changing pattern at the hospital for tropical diseases, London. *PLoS One.* 2015;10(4):e0121418.
47. Malik AN, John L, Bruceon AD, Lockwood DN. Changing pattern of visceral leishmaniasis, United Kingdom, 1985-2004. *Emerg Infect Dis.* 2006;12(8):1257-9.
48. Vascellari M, Ravagnan S, Carminato A, Cazzin S, Carli E, Da Rold G, et al. Exposure to vector-borne pathogens in candidate blood donor and free-roaming dogs of northeast Italy. *Parasit Vectors.* 2016;9(1):369.
49. Duthie MS, Petersen C. Could canine visceral leishmaniosis take hold in the UK? *Vet Rec.* 2019;184(14):438-40.
50. ECDC. European network for sharing data on the geographic distribution of arthropod vectors, transmitting human and animal disease agents (VectorNet) [Available from: <https://ecdc.europa.eu/en/about-us/partnerships-and-networks/disease-and-laboratory-networks/vector-net>].
51. Topley & Wilson's Microbiology and Microbial Infections. Parasitology. 10 ed: Hodden Arnold; 2017. p. 118-9.
52. Silvestrini P. Leishmaniosis in dogs and cats *In Practice.* 2019;41:5-14.
53. Cacicedo I. Leishmaniasis: threat to both holidaymakers and their dogs. *Vet Times.* 2010.
54. Medlock JM, Hansford KM, Van Bortel W, Zeller H, Alten B. A summary of the evidence for the change in European distribution of phlebotomine sand flies (Diptera: Psychodidae) of public health importance. *J Vector Ecol.* 2014;39(1):72-7.
55. Depaquit J, Naucke TJ, Schmitt C, Ferte H, Leger N. A molecular analysis of the subgenus *Transphlebotomus* Artemiev, 1984 (*Phlebotomus*, Diptera, Psychodidae) inferred from ND4 mtDNA with new northern records of *Phlebotomus mascittii* Grassi, 1908. *Parasitol Res.* 2005;95(2):113-6.
56. Naucke TJ, Menn B, Massberg D, Lorentz S. Sandflies and leishmaniasis in Germany. *Parasitol Res.* 2008;103 Suppl 1:S65-8.
57. Michel G, Pomares C, Ferrua B, Marty P. Importance of worldwide asymptomatic carriers of *Leishmania infantum* (*L. chagasi*) in human. *Acta Trop.* 2011;119(2-3):69-75.
58. Singh OP, Hasker E, Sacks D, Boelaert M, Sundar S. Asymptomatic *Leishmania* infection: a new challenge for *Leishmania* control. *Clin Infect Dis.* 2014;58(10):1424-9.
59. Andrade-Narvaez FJ, Loria-Cervera EN, Sosa-Bibiano EI, Van Wynsberghe NR. Asymptomatic infection with American cutaneous leishmaniasis: epidemiological and immunological studies. *Mem Inst Oswaldo Cruz.* 2016;111(10):599-604.

60. WHO. Leishmaniasis and HIV coinfection: WHO; [Available from: www.who.int/leishmaniasis/burden/hiv_coinfection/burden_hiv_coinfection/en/].
61. ECDC. Facts about leishmaniasis [Available from: <https://ecdc.europa.eu/en/leishmaniasis/facts>].
62. WHO Regional Office for Europe. Manual on case management and surveillance of the leishmaniases in the WHO European region. 2017.