










West of Ifield - Public Engagement

10th January - 18th January 2020

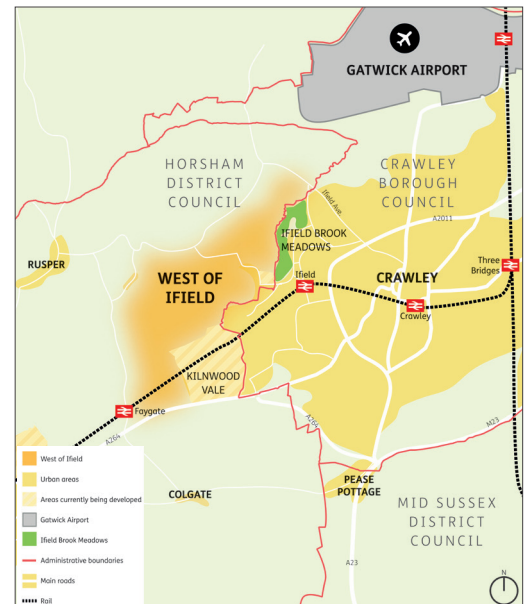
Homes England, the Government’s housing accelerator, is seeking to create three new neighbourhoods on land to the west of Ifield over the next 30 years. These neighbourhoods will deliver homes, schools, green spaces and community infrastructure where they are most needed, creating a vibrant new community.

We have a long-term commitment to placemaking, investing early in infrastructure and a track record of delivery. Our outlook and resources have unlocked sites elsewhere in the country, such as Burgess Hill and Northstowe (Cambridgeshire). As a result, we have delivered high quality places supported by high quality infrastructure.

We are promoting land to the west of Ifield as part of the Horsham District Council and Crawley Borough Council Local Plan Reviews. The exhibitions advertised here are the first in a series of public consultation events which will take place over the next year or more and allow us to introduce the site and understand local opportunities, issues and aspirations.

<p>High quality and diverse housing offer</p>  <p>10,000+ homes</p> <p>35 % affordable</p>	<p>Green space & Flood Protection</p> <p>Ifield Brook Meadows protected. Comprehensive flood protection scheme. Linear Parks</p>  <p>Target 50% Green Space</p>	<p>Gatwick Compliant</p> 
<p>Crawley Western Relief Road and Movement</p> 	<p>Schools</p> <p>5 x 2 FE Primary Schools expandable to 3FE with Early Years</p> <p>2 x 6 FE Secondary School expandable to 10FE plus sixth form and SEND</p>	<p>Biodiversity</p>  <p>10% Biodiversity net gain</p>
<p>Sociable and vibrant neighbourhoods</p> 	<p>Employment</p>  <p>10,000 new jobs to support the local economy and Gatwick Diamond</p>	

The opportunity



Location plan only. Not to scale



We are listening, engaging and learning

These initial events are the first step towards an ongoing conversation with you, the public, on what this community could look and feel like.

Following these exhibitions, we will continue to hold engagement events and working with you in shaping the future of the land west of Ifield if it is allocated for development in the Horsham District Local Plan.

We will be holding our first consultation events in January. If you are unable to attend, you can share your views with us by phone, email or freepost.

Friday 10th January	Gurjar Hindu Union, Apple Tree Centre, Ifield Avenue, Crawley, RH11 0AF	3-8pm
Saturday 11th January	Ghyll Manor, High Street, Rusper, Horsham, RH12 4PX	10am-3pm
Monday 13th January	Horsham Sports Club, Cricketfield Road, Horsham, RH12 1TE	3-8pm
Tuesday 14th January	Ifield West Community Centre, 1A Dobbins Place, Crawley, RH11 0SZ	4-8pm
Wednesday 15th January	The Hawth Theatre, Hawth Avenue, Crawley, RH10 6YZ	10am-1pm
Wednesday 15th January	The Hawth Theatre, Hawth Avenue, Crawley, RH10 6YZ	3-8pm
Thursday 16th January	Ghyll Manor, High Street, Rusper, Horsham, RH12 4PX	3-8pm
Friday 17th January	Ifield West Community Centre, 1A Dobbins Place, Crawley, RH11 0SZ	4-8pm
Saturday 18th January	Gurjar Hindu Union, Apple Tree Centre, Ifield Avenue, Crawley, RH11 0AF	10am-3pm

We would like to keep you up to date on our progress and hope you will get in touch with us via social media as well as coming to our events in person.

Stay in touch

www.westoffield.co.uk | 020 8629 7209 | [@Westoffield](https://twitter.com/Westoffield)
westoffield@homesengland.gov.uk | West of Ifield FREEPOST RUBB-YAXK-BBYA

We want to be accessible to all. If you need this produced in a different format please contact us.



Scan this QR code to access our website.