

HS2

Highway Planning Forum

Highway Subgroup

6th December 2018

HS2

Introductions

Chair

HS2

Review of notes and actions from last meetings

Chair

HS2

HS2 2018 End of Year Summary

HS2 Ltd

HS2

Programme/Methodology/Lorry Movements/LTMPs

Buckinghamshire CC

HS2

Consents and Approvals Procedure – Permanent Highways – Update

HS2 Ltd

Consents and Approvals Procedure – Permanent Highways – Update – 1/2

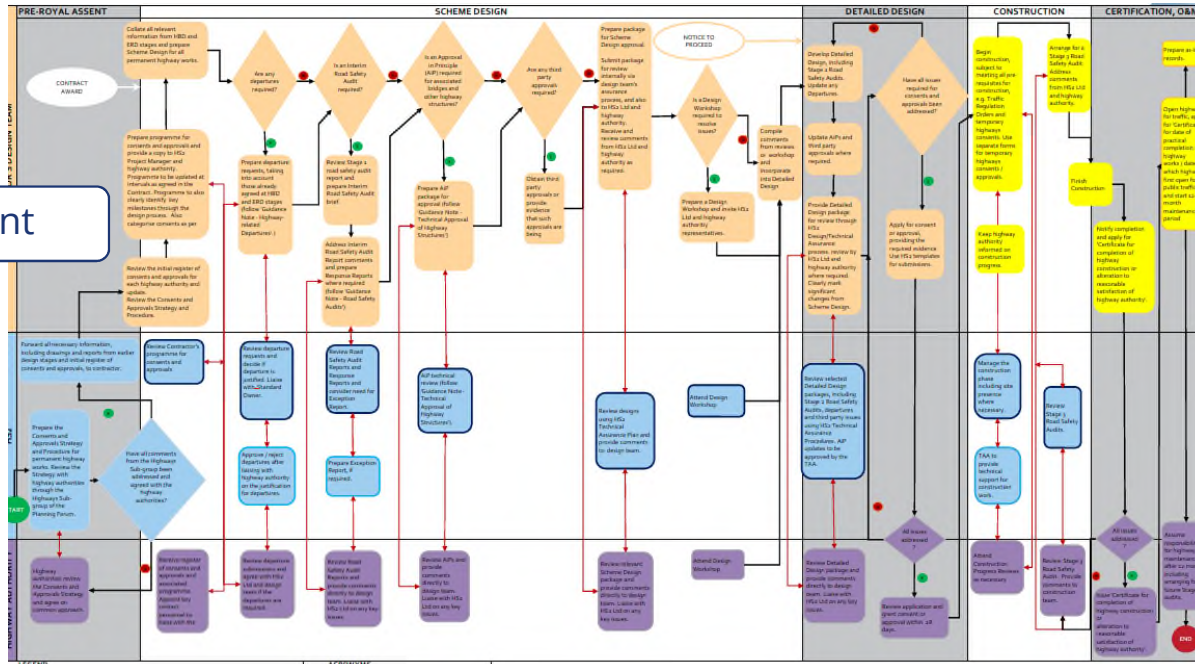
Summary

- The Consents and Approvals Procedure – Permanent Highways is an accompanying document to the Consents and Approvals Strategy – Permanent Highways
- Highway Authorities have been issued with a copy of the flowchart in the Procedure (currently P02)
- Working with Highways England, HS2 Ltd is currently updating the flowchart to assist in the clarity of the activities/steps leading up to the application for consent
- Updated flowchart will include explanatory notes explaining the input/output/action required for each key party of the consents procedure (i.e. HS2 Ltd, Contractors/Designers and Highway Authorities)
- Draft to be sent for consultation before the next Highway Subgroup meeting



Consents and Approvals Procedure - Permanent Highways - Update - 2/2

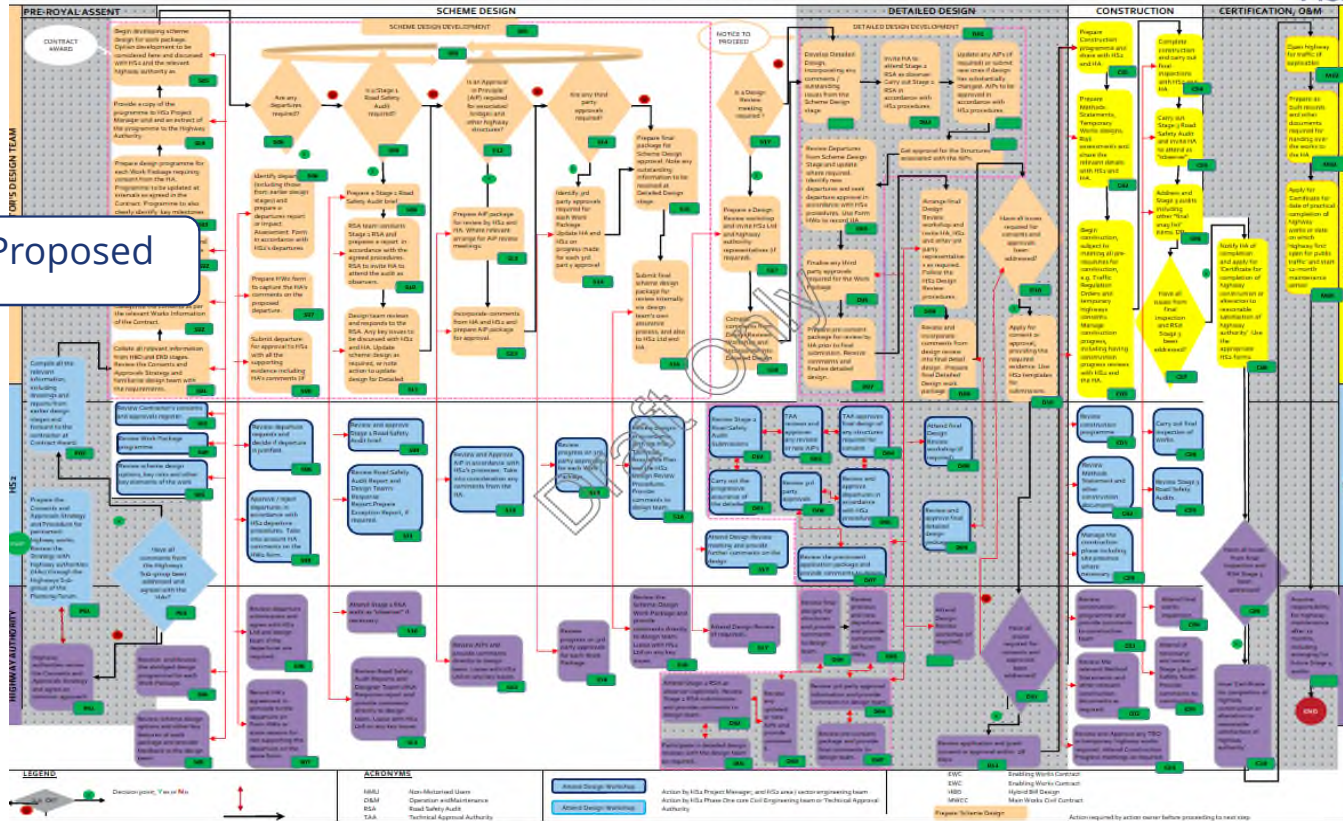
Current



Consents and Approvals Procedure - Permanent Highways - Update - 2/2

APPENDIX A - PERMANENT HIGHWAYS CONSENTS AND APPROVALS PROCEDURE

HS2



Criteria	HS2	Highway Authority
Pre-Royal Assent	<p>The design of the proposed scheme must be consistent with the HS2 Project Design Team's design and approved by the HS2 Project Design Team.</p> <p>The design of the proposed scheme must be consistent with the HS2 Project Design Team's design and approved by the HS2 Project Design Team.</p>	<p>The design of the proposed scheme must be consistent with the HS2 Project Design Team's design and approved by the HS2 Project Design Team.</p> <p>The design of the proposed scheme must be consistent with the HS2 Project Design Team's design and approved by the HS2 Project Design Team.</p>
Scheme Design	<p>The design of the proposed scheme must be consistent with the HS2 Project Design Team's design and approved by the HS2 Project Design Team.</p> <p>The design of the proposed scheme must be consistent with the HS2 Project Design Team's design and approved by the HS2 Project Design Team.</p>	<p>The design of the proposed scheme must be consistent with the HS2 Project Design Team's design and approved by the HS2 Project Design Team.</p> <p>The design of the proposed scheme must be consistent with the HS2 Project Design Team's design and approved by the HS2 Project Design Team.</p>
Detailed Design	<p>The design of the proposed scheme must be consistent with the HS2 Project Design Team's design and approved by the HS2 Project Design Team.</p> <p>The design of the proposed scheme must be consistent with the HS2 Project Design Team's design and approved by the HS2 Project Design Team.</p>	<p>The design of the proposed scheme must be consistent with the HS2 Project Design Team's design and approved by the HS2 Project Design Team.</p> <p>The design of the proposed scheme must be consistent with the HS2 Project Design Team's design and approved by the HS2 Project Design Team.</p>
Construction	<p>The design of the proposed scheme must be consistent with the HS2 Project Design Team's design and approved by the HS2 Project Design Team.</p> <p>The design of the proposed scheme must be consistent with the HS2 Project Design Team's design and approved by the HS2 Project Design Team.</p>	<p>The design of the proposed scheme must be consistent with the HS2 Project Design Team's design and approved by the HS2 Project Design Team.</p> <p>The design of the proposed scheme must be consistent with the HS2 Project Design Team's design and approved by the HS2 Project Design Team.</p>
Certification/O&M	<p>The design of the proposed scheme must be consistent with the HS2 Project Design Team's design and approved by the HS2 Project Design Team.</p> <p>The design of the proposed scheme must be consistent with the HS2 Project Design Team's design and approved by the HS2 Project Design Team.</p>	<p>The design of the proposed scheme must be consistent with the HS2 Project Design Team's design and approved by the HS2 Project Design Team.</p> <p>The design of the proposed scheme must be consistent with the HS2 Project Design Team's design and approved by the HS2 Project Design Team.</p>

Page 1

HS2

Road Safety Fund

HS2 Ltd

Road Safety Fund

Submissions

To make an application against the Road Safety Fund in line with your fund allocations, the process is as follows:

1. Submit a completed Submission Form to Peter Tomlin copying in your Third Party Agreement Manager.
2. The submission is distributed to the Review Panel for review. If no additional information is required, confirmation that the submission is successful should normally be provided within **7 working days** unless additional information is requested.
3. If the review panel does not agree that the works meet the objectives or that they will conflict with the delivery of HS2, then the scheme may be referred to the HS2 Undertaking and Assurance Compliance Committee for consideration.



Road Safety Fund

Payments

You will shortly receive a formal issue of your PO number in relation to your Road Safety Fund allocation. For those already submitted and agreed, these will be sent today. The remaining POs are being raised and will be issued next week.

Please ensure that the corresponding PO number appears on all correspondence and invoices in relation to the Road Safety Fund.

For approved Submissions, the Local Authority will be required to raise an invoice for the approved amount within **4 weeks** to HS2AccountsPayable@hs2.org.uk copying in your Third Party Agreement Manager.

Payment of the submitted Invoice will be made within **30 days**, in accordance with HS2's standard payment terms.



HS2

Cycling Update

HS2 Ltd

Cycling Update – 1/3

Recap

- HS2 has given Cycling UK (formerly CTC) assurances on how cycleways and other infrastructure for cyclists will be considered during the detailed design of Phase One.
- HS2 Ltd has already shared its approach at previous meeting of the Highways Subgroup. Please refer to previous minutes and slides.

Since then ..

- Since the last update in January 2018, Main Civil Works Contractors (MWCC) and Enabling Works Contractors (EWC) have continued scheme design and detailed design of highway works
- Some specific schemes with cycleways already embedded in the scope now being delivered
- Engagement with many highway authorities has started, and identification of opportunities where cycleway-related infrastructure can be implemented



Cycling Update – 2/3

Birmingham City Council

- Meetings held roughly every 1.5 months; coordinated by Transport for West Midlands (TfWM).
- 4 meetings held to date – last meeting in October also attended by Cycling UK.
- Attended by BBV (MWCC), LM (EWC), TfWM, HS2 Ltd, Canals & Rivers Trust, Metro and other stakeholders.

Solihull Metropolitan Borough Council

- Meetings held roughly every 1.5 months; coordinated by Transport for West Midlands.
- 4 meetings held to date – last meeting in October also attended by Cycling UK.
- Attended by BBV (MWCC), LM (EWC), TfWM, HS2 Ltd and other stakeholders.

Warwickshire County Council

- Currently meetings held ad hoc basis; regular meetings in future.
- 2 meetings so far.
- WCC have also started applying for the Road Safety Fund to carry out feasibility studies on some of the schemes identified in the National Cycleway Feasibility Study.
- Attended by BBV (MWCC), HS2 Ltd. To invite LM (EWC) to future meetings.



Cycling Update – 3/3

Buckinghamshire County Council

- 1 formal meeting so far; but other meetings for specific schemes held by HS2 / BCC management.
- Attended by EK (MWCC) and HS2 Ltd. Future meetings to include Fusion (EWC).

DfT National Cycleway in association with HS2 Feasibility Study

- In October 2018 the DfT formally published the Feasibility Study on potential cycle routes within the HS2 corridor
- The report (and associated design notes) had already been shared informally with all highway authorities
- The report can be used as a technical resource by local highway authorities and others
- DfT has confirmed that publication of the report does not mean that the DfT or HS2 Ltd are going now funded to implement any of these schemes
- HS2 Ltd already uses the report as a technical resource

Road Safety Fund

- Please refer to slides on Road Safety Fund update on this pack (Note added post-meeting).



HS2

Technical Standards – update

HS2 Ltd

Technical Standards (1)

Updated documents previously circulated for review / comment:

- **Roads** (version P04)
 - Response sheet issued 10/09/2018
 - Could be subject to changes arising from the ongoing DMRB update
- **Bridge Design Basis** (version P06)
 - Comments received
 - Response sheet being prepared
- **Highway and Access Drainage** (version P04)
 - Comments received from Highways England
 - Response sheet being prepared



Technical Standards (2)

Documents being updated, as previously advised:

- **Public Rights of Way** (version P04)
- **Temporary Works** (version P04)
- **Retaining Structures** (version P05)
 - To be circulated for review / comment when ready



HS2

Guidance notes – update

HS2 Ltd

Guidance Notes (1)

Updated documents reissued with response sheets (11/06/2018)

- **Highway-related Departures** (version P03)
 - Response sheet issued 10/09/2018

Documents being updated, as previously advised:

- **Technical Approval of Highway Structures** (version P02)
- **Highway Earthworks Approvals / Certification** (version P02)
- **Technical Approval of Temporary Works with Highways Interface** (version P02)
 - To be circulated for review / comment when ready

Documents updated, but further revision potentially required:

- **Road Safety Audits** (version P03)
 - Ready for issue, but needs reconsideration following recent replacement of HD 19 by GG 119



Guidance Notes (2)

Documents to be updated in due course, as previously advised:

- **Bridge Maintenance Demarcation Lines** (version P03)
 - Improved illustrations required – to be circulated for review / comment when ready

Document previously issued for review / comment:

- **Stopping-up of Highways** (version P01)
 - Response sheet issued 10/09/2018
 - To be recirculated for information when ready

New documents to be drafted, as previously advised :

- **Handover Packages for Highway Authorities** (version P01)
- **Car Parking** (version P01) *NB – Previously listed as 'Car and Cycle Parking'*
 - To be circulated for review / comment when ready



Guidance Notes (3)

Further new document newly identified:

- **HS2 Approach to Cycling Provision** (version P01)
 - To be circulated for review / comment when ready



HS2

Forms

HS2 Ltd

Forms (1)

Documents previously issued for review / comment:

- **Form BR1** (version P01)
- **Form HW1** (version P04)
- **Form HW3** (version P02)
- **Form HW4** (version P03)
- **Form HW5** (version P03)
- **Form HW10** (version P03)
- **Form HW11** (version P03)
- **Form HW12** (version P02)
 - Comments received from several highway authorities
 - Response sheets in preparation



Forms (2)

Documents previously issued for information:

- **Form HW16** (version P01)
 - Comments received from several highway authorities
 - Response sheets in preparation

Documents in preparation:

- **Form HW15** (version P01)
 - To be circulated for review / comment when ready



HS2

Highway Authority Feedback – Examples of submission quality concerns

Highway Authorities

HS2

AOB

All