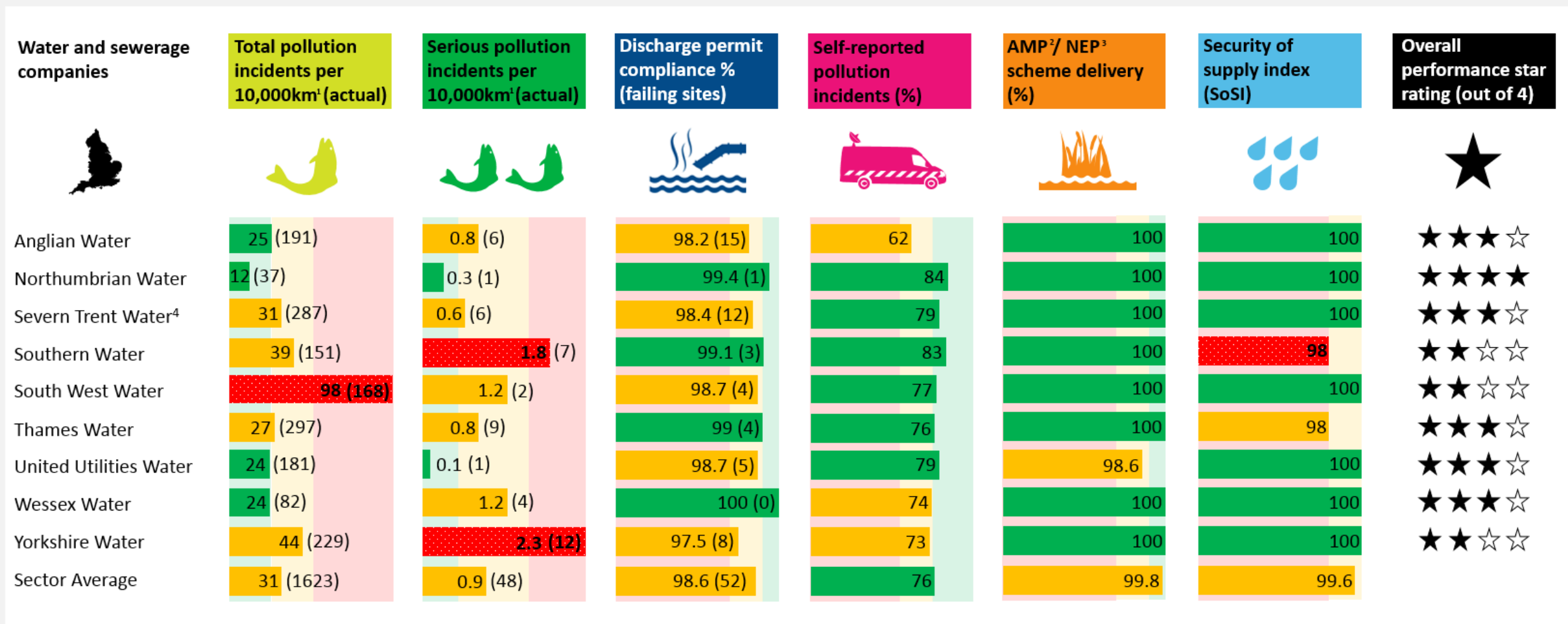


Water and sewerage companies

Environmental Performance Assessment 2018



Green Better than target
 Amber Slightly worse than target
 Red Significantly worse than target
 R A G Red, amber, green thresholds

¹ of sewer length ² Asset Management Plan ³ National Environment Programme
 Note: These results are drawn, in part, from information submitted by the companies and may change as a result of subsequent audits and checking
 Source: Environment Agency

Water and sewerage companies sector

Key Facts



Water and sewerage companies in England



Serves around 53.5 million people



Around 19,000 Environmental permits



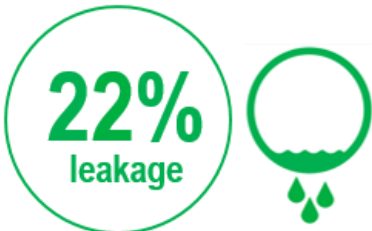
Approximate number of properties internally flooded by sewage⁵



Approximate amount of water abstracted per day



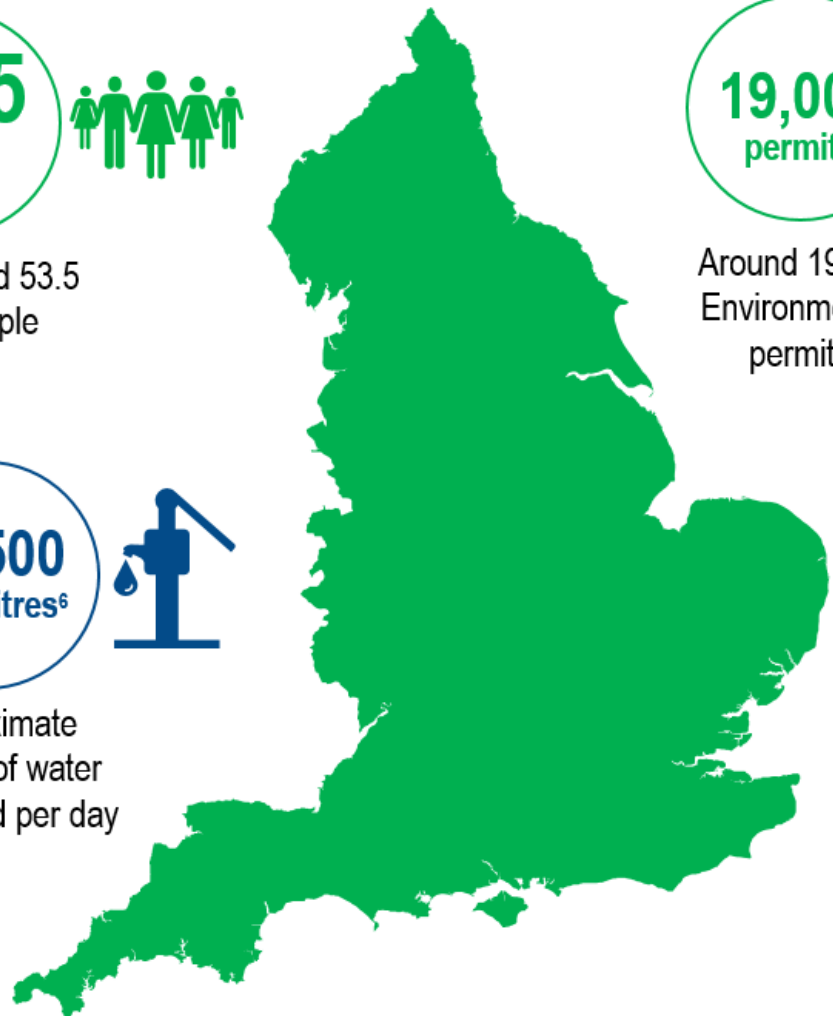
Around 3,500 permitted sewage treatment works with numeric limits



Leakage as a percent of all water abstracted is 22%



Approximate amount of sludge used or disposed of in 2018



⁵ Between April 2017 and March 2018

⁶ Megalitre equal to a million litres