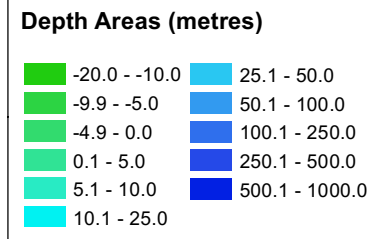


Yarmouth to Cowes MCZ Boundary

- Marine Conservation Zone
- MCZ boundary co-ordinates
- UK Continental Shelf
- 12nM Territorial Seas Limit
- Land

Point	Lat	Long
A	50° 45' 56.560" N	1° 19' 10.045" W
B	50° 42' 24.425" N	1° 29' 55.500" W
C	50° 42' 44.460" N	1° 29' 58.590" W
D	50° 42' 51.521" N	1° 29' 24.156" W
E	50° 45' 46.769" N	1° 19' 45.648" W
F	50° 45' 56.842" N	1° 19' 26.286" W



The landward boundary between points A and B follows Ordnance Survey MasterMap Mean High Water, and is therefore liable to change.

Contains information from the Ordnance Survey © Crown Copyright and database right 2019. Ordnance Survey 100022021. UKHO Data © British Crown Copyright. All rights reserved. Permission Number Defra012019.001. This product has been derived in part from material obtained from the UK Hydrographic Office with the permission of the Controller of Her Majesty's Stationery Office and UK Hydrographic Office (www.ukho.gov.uk). NOT TO BE USED FOR NAVIGATION Map produced by Natural England 2019. Reference: Theme ID: 1477573 Map Projection: British National Grid