



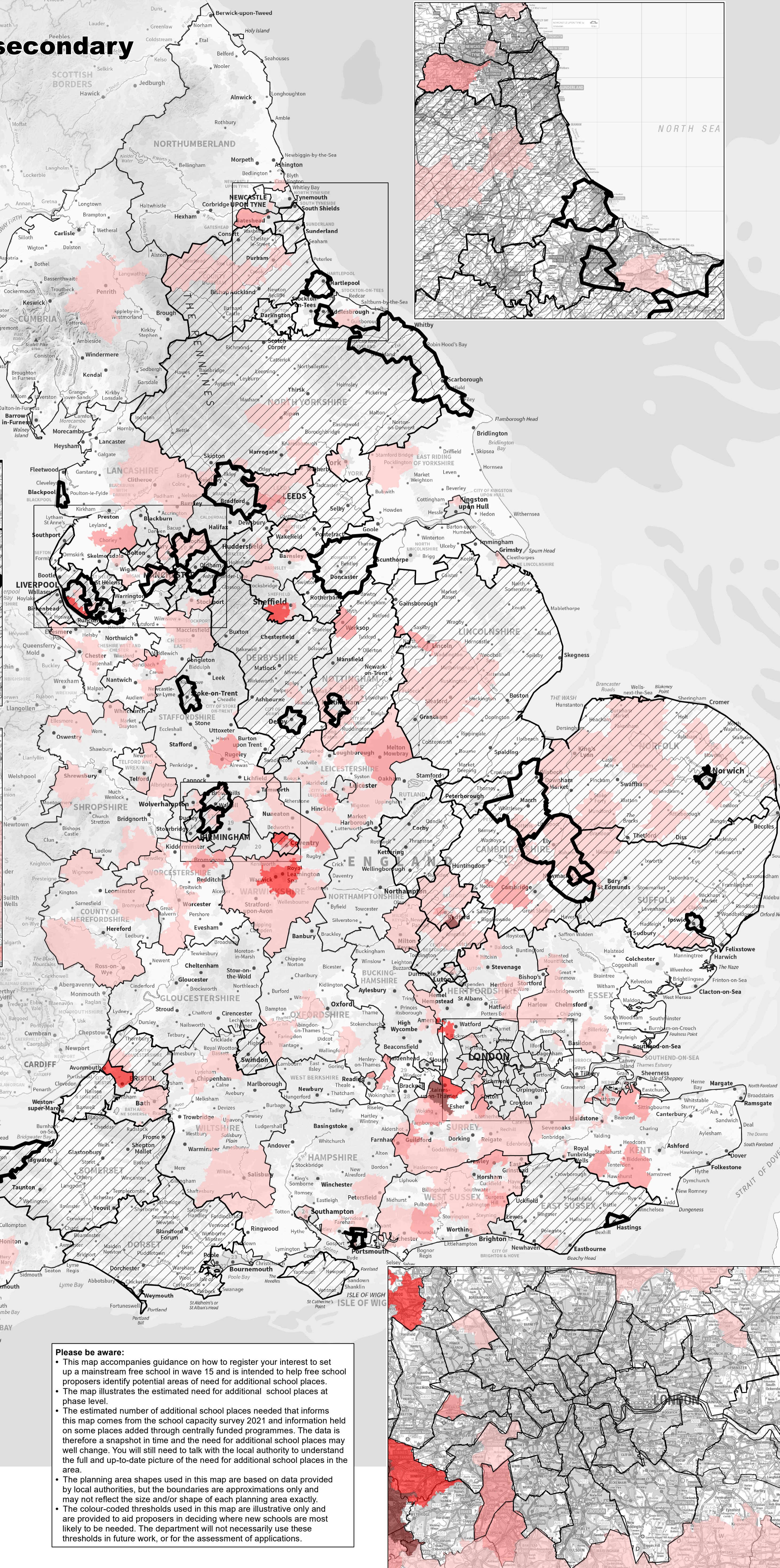
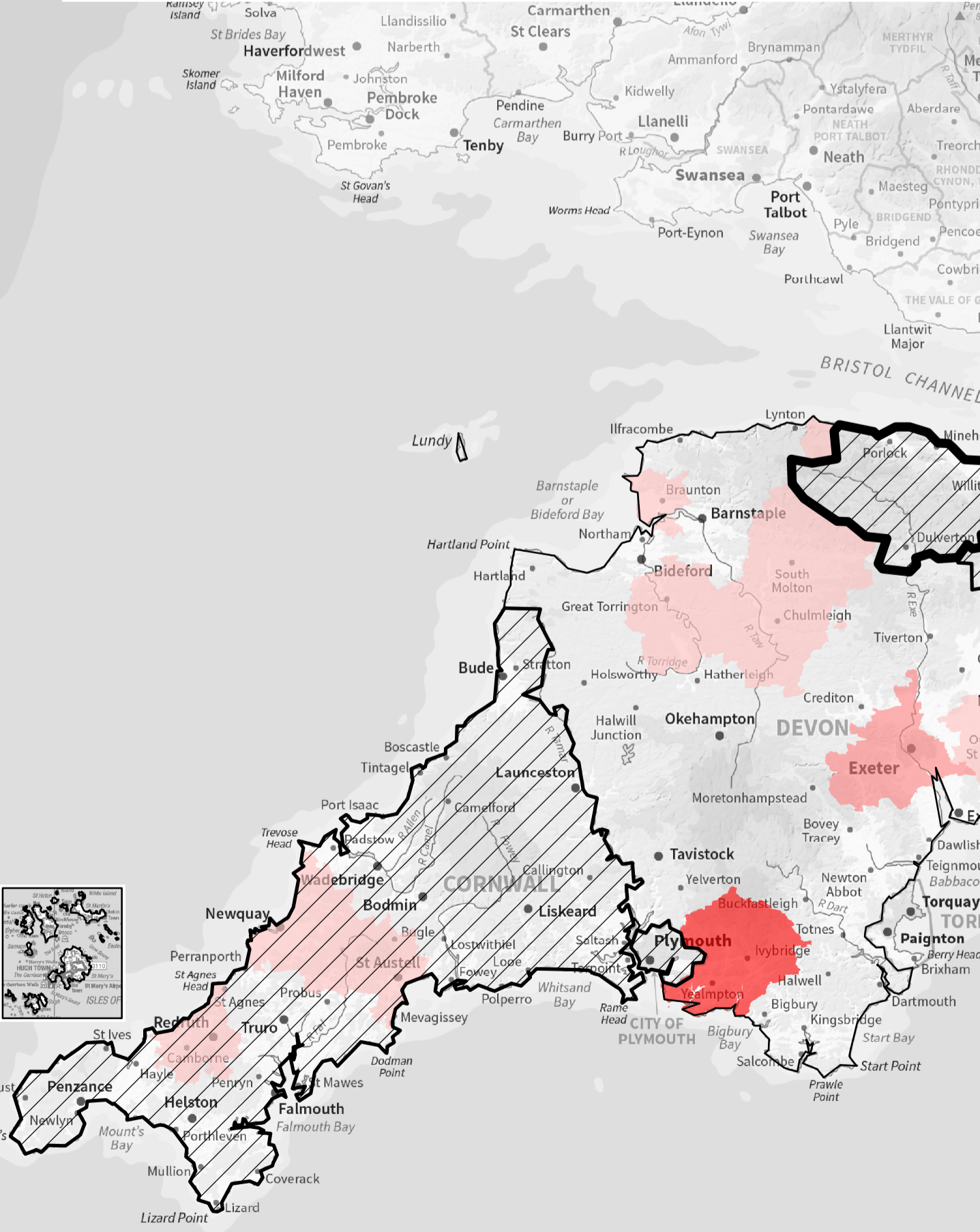
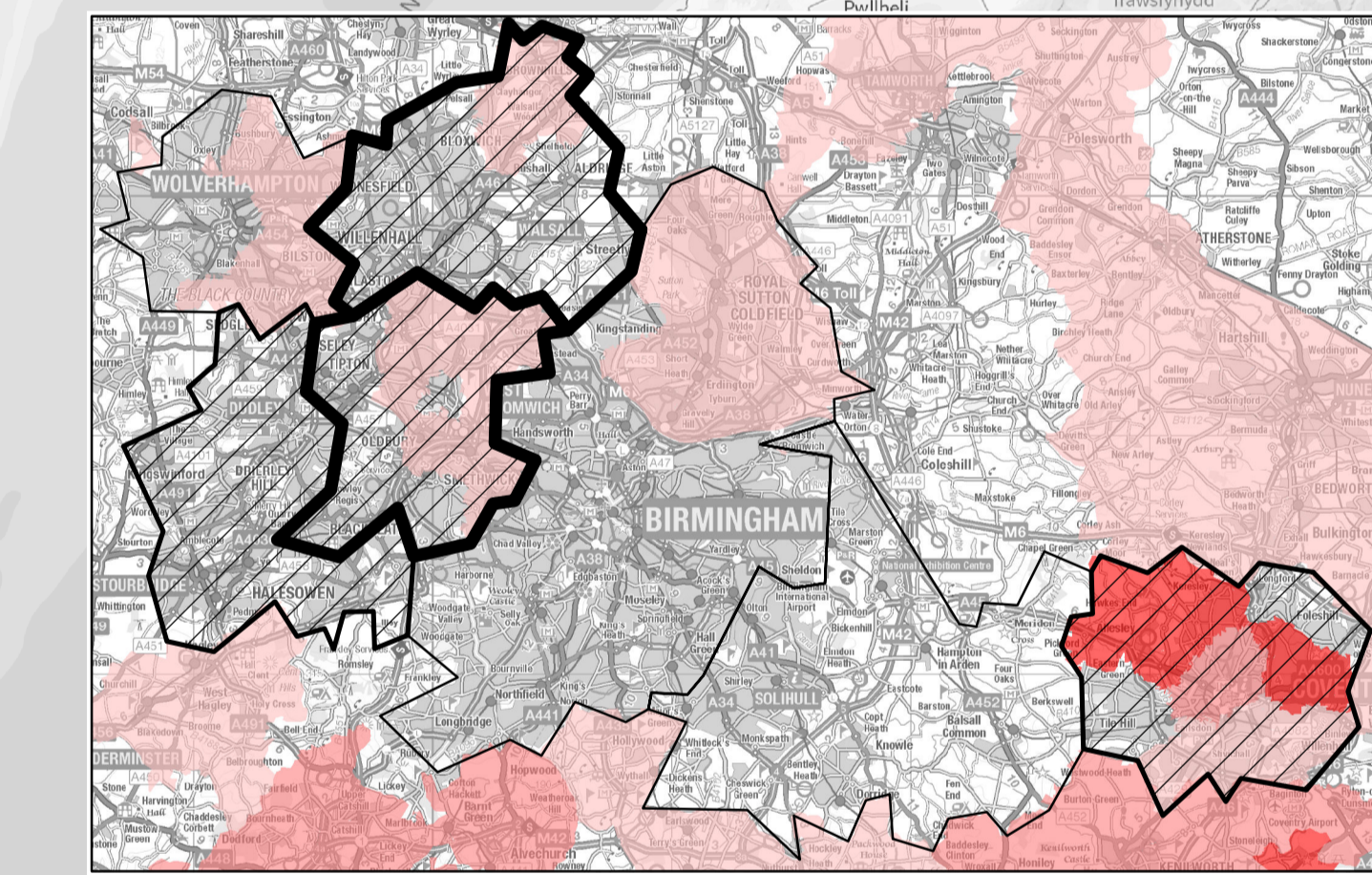
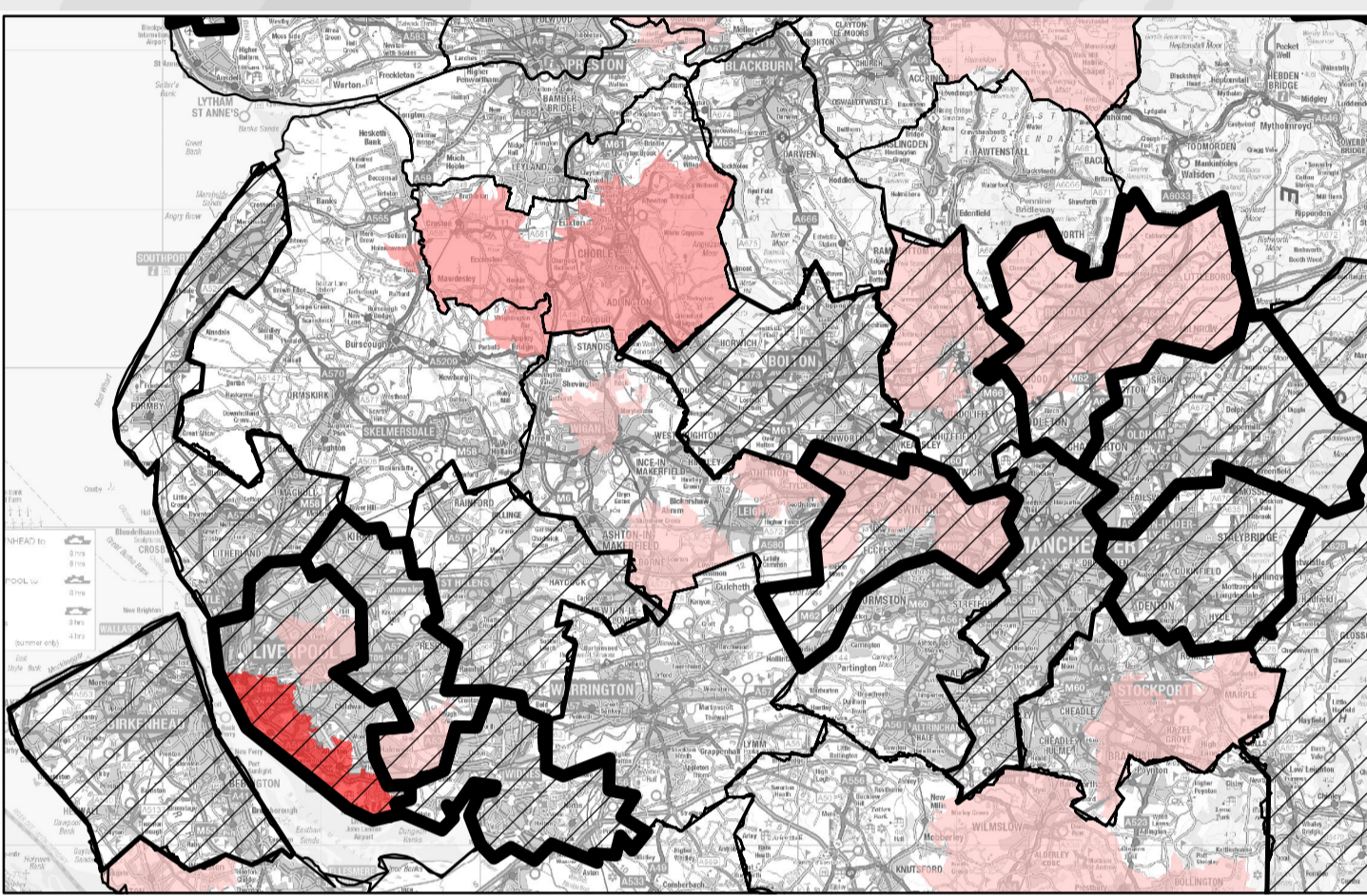
## Estimated total number of secondary places needed (at planning area level) – 2027/28

### Estimated number of places needed

- 900 or more
- 600 to 899
- 300 to 599
- 1 to 299
- 0 or less

Priority Education Investment Area

Education Investment Area



**Please be aware:**

- This map accompanies guidance on how to register your interest to set up a mainstream free school in wave 15 and is intended to help free school proposers identify potential areas of need for additional school places.
- The map illustrates the estimated need for additional school places at phase level.
- The estimated number of additional school places needed that informs this map comes from the school capacity survey 2021 and information held on some places added through centrally funded programmes. The data is therefore a snapshot in time and the need for additional school places may well change. You will still need to talk with the local authority to understand the full and up-to-date picture of the need for additional school places in the area.
- The planning area shapes used in this map are based on data provided by local authorities, but the boundaries are approximations only and may not reflect the size and/or shape of each planning area exactly.
- The colour-coded thresholds used in this map are illustrative only and are provided to aid proposers in deciding where new schools are most likely to be needed. The Department will not necessarily use these thresholds in future work, or for the assessment of applications.