



Public Health
England

Protecting and improving the nation's health

Suspected and laboratory confirmed reported norovirus outbreaks in hospitals (England) and norovirus laboratory reports (England and Wales): weeks 1 to 4, 2019

Health Protection Report

Volume 13 Number 6

15 February 2019

Suspected and laboratory confirmed reported norovirus outbreaks in hospitals: outbreaks occurring in weeks 1 to 4, 2019 (England)

The hospital norovirus outbreak reporting scheme (HNORS) recorded 66 outbreaks occurring between weeks 1 to 4, 2019, 65 of which (98 per cent) led to ward/bay closure or restriction to admissions and 43 of which (65 per cent) were recorded as laboratory confirmed due to norovirus. From week 1 (week beginning 31 December 2018) to week 4 (week beginning 21 January 2019), 66 outbreaks have been reported. Ninety-eight per cent (65) of reported outbreaks resulted in ward/bay closures or restrictions to admissions and 65 five per cent (43) were laboratory confirmed as due to norovirus.

Table: Suspected and laboratory-confirmed reported norovirus outbreaks in hospitals in England, with regional breakdown: outbreaks occurring in weeks 1 to 4, 2019

PHE Centre	Outbreaks between weeks 1 and 4, 2019		
	Outbreaks	Ward/bay closure †	Lab confirmed
East of England	-	-	-
East Midlands	2	2	-
London	1	1	1
North East	13	13	7
North West	2	2	2
South East	-	-	-
South West	27	26	23
West Midlands	10	10	4
Yorkshire and Humberside	11	11	8
Total	66	65	43

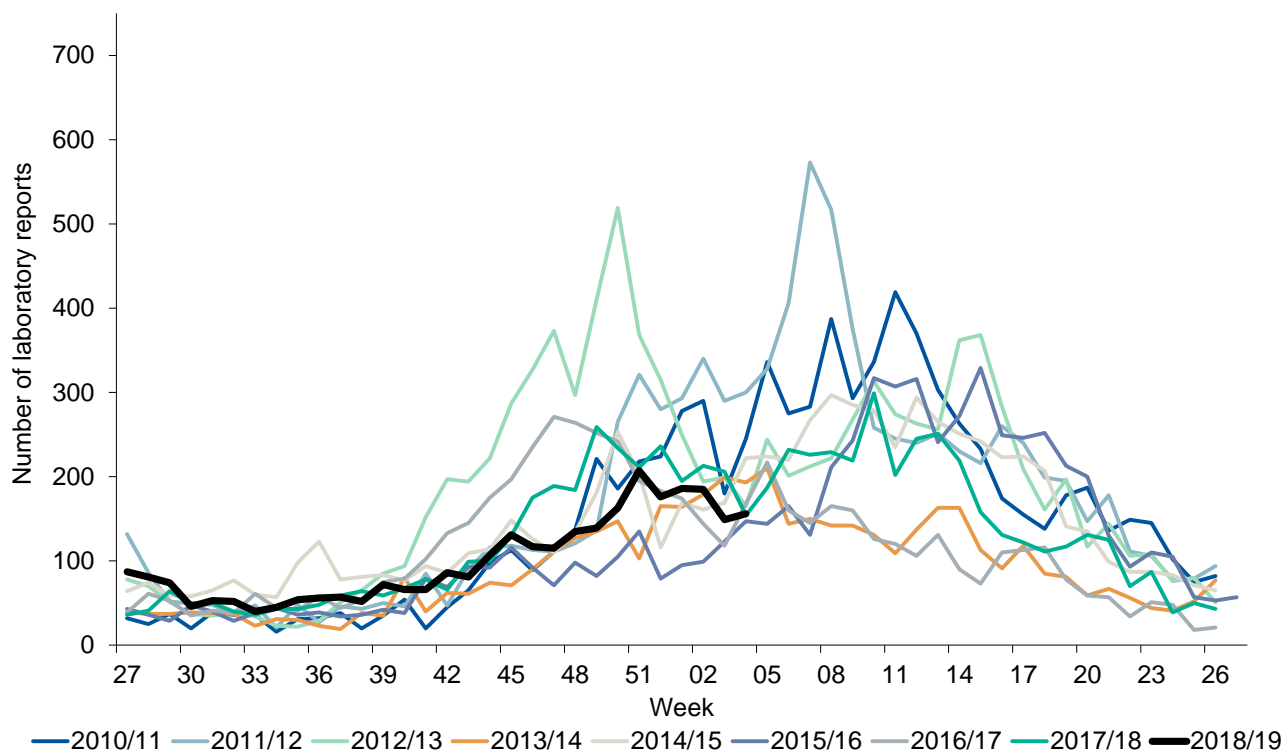
† Note: not all outbreaks result in whole wards closures, some closures are restricted to bays only

Norovirus laboratory reporting: data from SGSS (England and Wales)

From week 1, 2019 to week 4, 2019 there were 676 laboratory reports of norovirus. This is two per cent lower than the average number of laboratory reports for the same period in the five years between 2014 and 2018 (755).

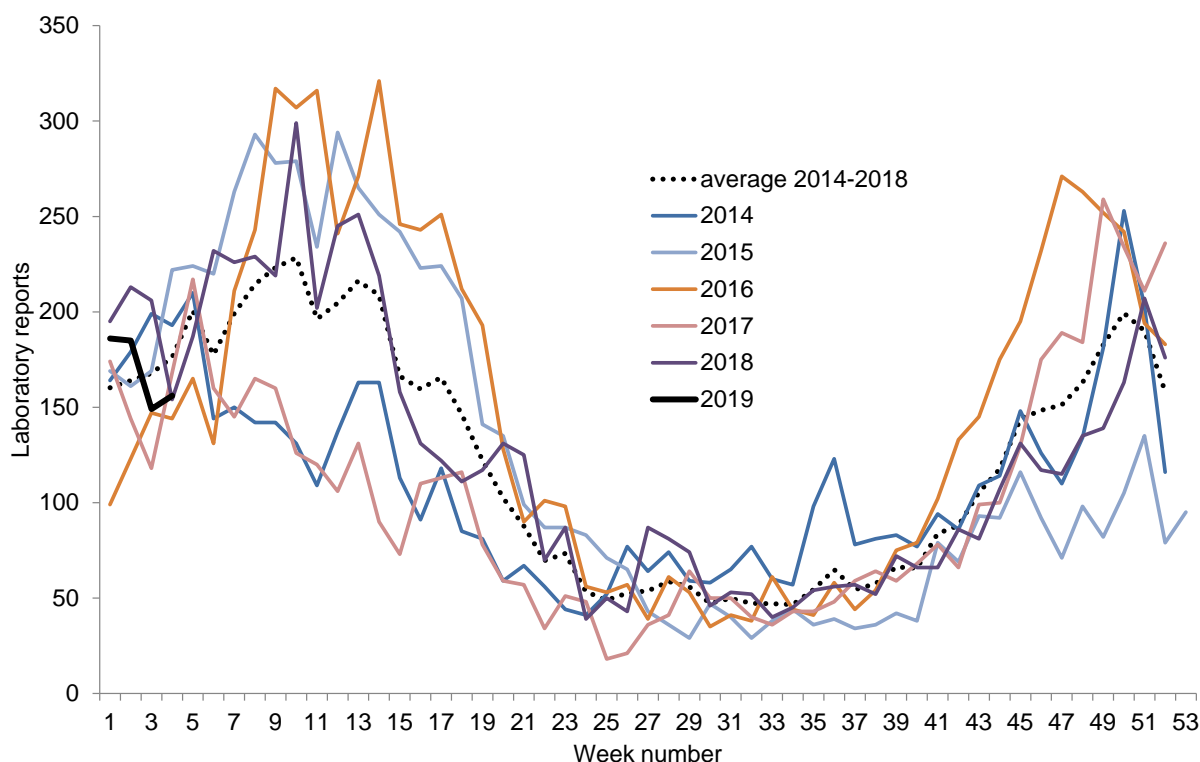
Note: Data from laboratory reporting are subject to a reporting delay and the number reported in the most recent weeks is likely to rise as further laboratory reports are received.

Figure 1: Seasonal comparison of laboratory reports of norovirus 2010/11 - 2018/19 (England and Wales)



Note. The norovirus season runs from week 27 in year 1 to week 26 in year 2, i.e. week 27 2017 – week 26 2018 July to June, in order to capture the winter peak in one season.

Figure 2: Current weekly norovirus laboratory reports compared to weekly mean reports 2014 - 2018 (England and Wales)



About Public Health England

Public Health England exists to protect and improve the nation's health and wellbeing, and reduce health inequalities. We do this through world-class science, knowledge and intelligence, advocacy, partnerships and the delivery of specialist public health services. We are an executive agency of the Department of Health and Social Care, and are a distinct delivery organisation with operational autonomy. We provide government, local government, the NHS, Parliament, industry and the public with evidence-based professional, scientific and delivery expertise and support.

About Health Protection Report

Health Protection Report is a national public health bulletin for England and Wales, published by Public Health England. It is PHE's principal channel for the dissemination of laboratory data relating to pathogens and infections/communicable diseases of public health significance and of reports on outbreaks, incidents and ongoing investigations.

Public Health England, Wellington House, 133-155 Waterloo Road, London SE1 8UG
Tel: 020 7654 8000 www.gov.uk/phe
[Twitter: @PHE_uk](https://twitter.com/PHE_uk) Facebook: www.facebook.com/PublicHealthEngland

Queries relating to this document should be directed to:
noroOBK@phe.gov.uk.



© Crown copyright 2019

You may re-use this information (excluding logos) free of charge in any format or medium, under the terms of the Open Government Licence v3.0. To view this licence, visit [OGL](http://www.ogil.gov.uk). Where we have identified any third party copyright information you will need to obtain permission from the copyright holders concerned.

Published February 2019
PHE publications
gateway number: 2018735

PHE supports the UN
Sustainable Development Goals

