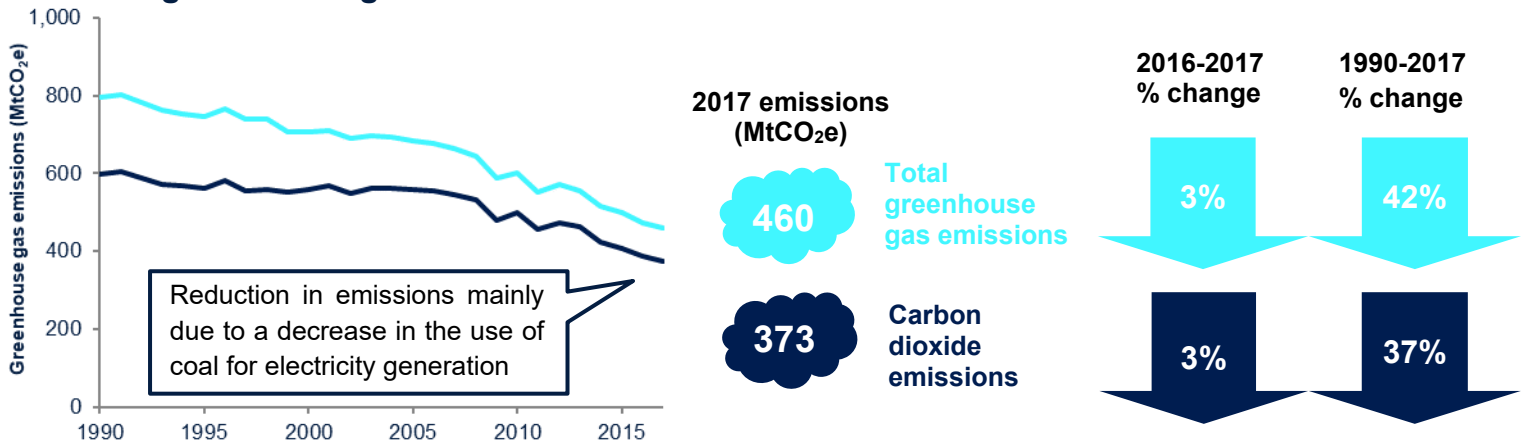
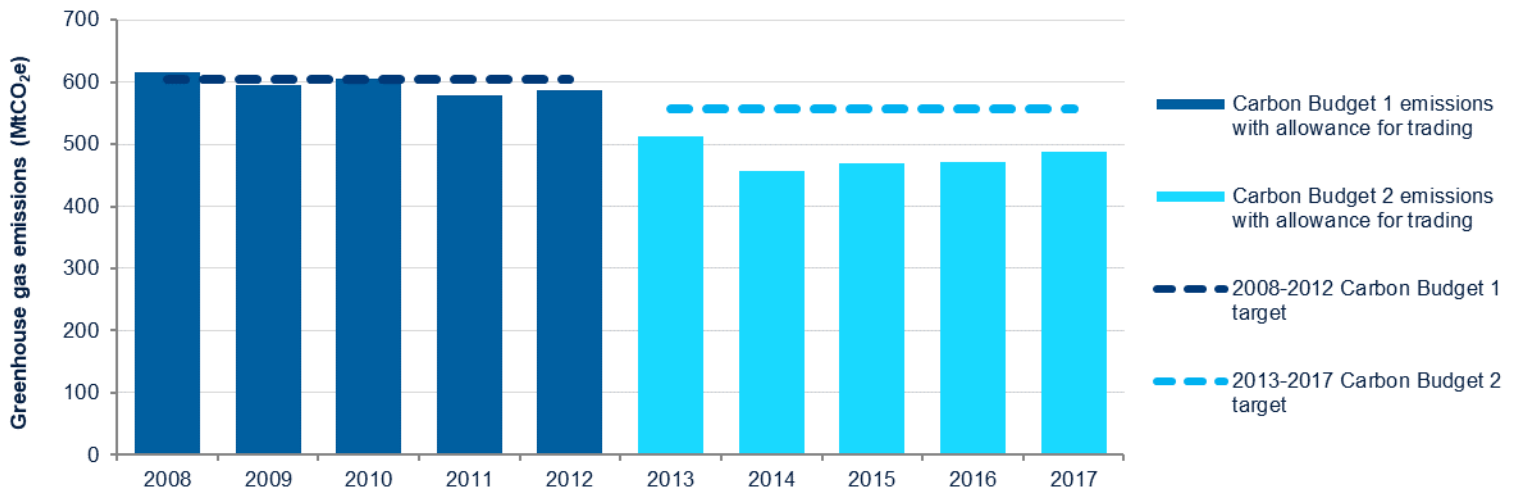


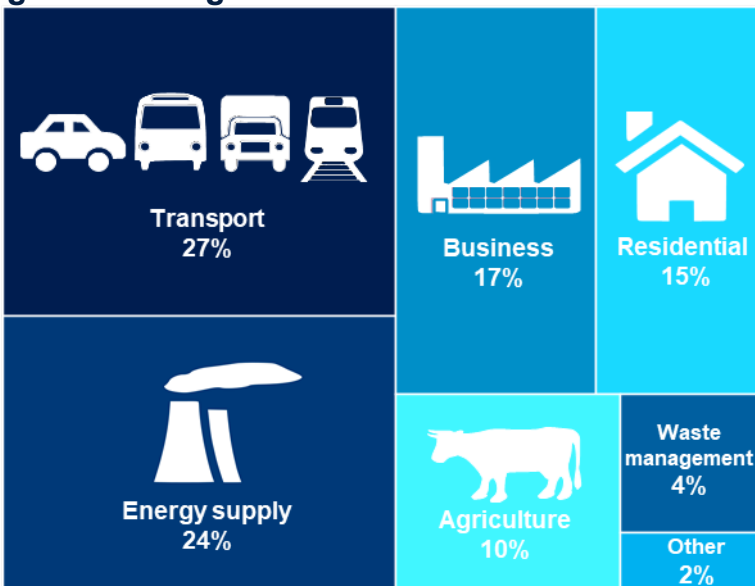
2017 UK greenhouse gas emissions are estimated to have decreased from 2016



The UK has met its target in the Second Carbon Budget, covering 2013-2017 emissions



Transport was the largest emitting sector of UK greenhouse gas emissions in 2017



Other includes Public, Industrial Processes and the Land Use, Land Use Change and Forestry (LULUCF) sectors (note that LULUCF acts as a net sink of emissions). The percentages may not sum to 100% due to rounding.

Energy supply and the residential sector delivered the largest reductions in emissions from 2016 to 2017

Sector	2016-2017 % change	1990-2017 % change
Transport	0%	2%
Energy supply	8%	60%
Business	2%	30%
Residential	4%	16%
Agriculture	1%	16%
Waste management	1%	69%
Other	2%	88%

The energy supply sector has accounted for around half of the overall reduction in UK emissions since 1990, at which point it accounted for 35% of all emissions in the UK. It was the largest emitting sector until its emissions fell below transport in 2016.