


Stoke-on-Trent & Staffordshire




Our modern Industrial Strategy sets out our long-term plan to boost productivity by backing business to create high quality, well-paid jobs throughout the United Kingdom with investment in skills, industries and infrastructure.

In Stoke-on-Trent and Staffordshire a partnership of business and civic leaders – alongside other local partners – is working with the government to build on existing strengths, help business to flourish, and grow skills and opportunities for workers across the area.

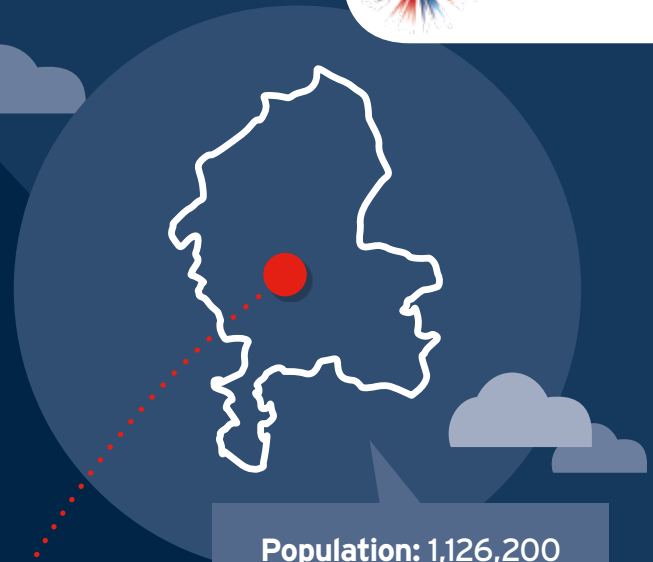
Industrial Strategy highlights include:

 **£2.6m** to Cobra Biologics to develop cell and gene therapy products that can improve and even save lives, including helping turn scientific discoveries into medicines ready for patients.

 **£10m** to accelerate housebuilding by providing the vital infrastructure to access new and existing sites.

 **£2.8m** for improvements to infrastructure to open up Bericote Four Ashes Business Park in Wolverhampton.

 **551,900** people in employment, an increase of **38,900** since 2010. **23,500** workers directly benefiting from the National Living and Minimum Wages. **8,680** apprenticeships starts last year.



Population: 1,126,200
Businesses: 46,190

Case study: Stafford College Science & Technology Centre (STC)

The Stafford College Science and Technology Centre is focusing on developing STEM-related curriculum for children, primarily at levels 3, 4 and 5. The centre opened last year following a £2m investment and houses state-of-the-art science and engineering facilities. It also includes a Lego innovation hub, which focuses on the technical aspects of learning through the medium of Lego.

For more examples go to bit.ly/IS-map

Stoke-on-Trent and Staffordshire Local Enterprise Partnership is now working with the government to develop its Local Industrial Strategy.

We have committed more than £45bn to Industrial Strategy programmes supporting research, local infrastructure, training and business growth throughout the United Kingdom. This money is already starting to be spent on the ground.