


# New Anglia





**Our modern Industrial Strategy sets out our long-term plan to boost productivity by backing business to create high quality, well-paid jobs throughout the United Kingdom with investment in skills, industries and infrastructure.**

In the New Anglia area a partnership of business and civic leaders – alongside other local partners – is working with the government to build on existing strengths, help business to flourish, and grow skills and opportunities for workers across the area.

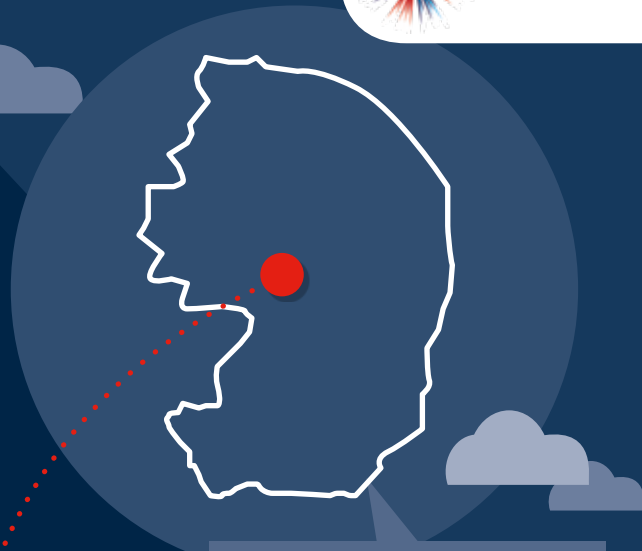
Industrial Strategy highlights include:

 **£120,000** for TrainNDT to develop non-destructive testing for trains, which is essential for ensuring and maintaining the integrity of structures and systems from aircraft to power stations.

 **£8.8m** to improve public transport, walking and cycling links in Great Yarmouth.

 **£9.5m** to accelerate housebuilding by providing the vital infrastructure to new and existing sites.

 **770,800** people in employment, an increase of **51,200** since 2010. **48,500** workers directly benefiting from the National Living and Minimum Wages. **11,960** apprenticeships starts last year.



**Population: 1,626,900**  
**Businesses: 61,015**

## Case study: Thurn Group

Thurn Group provides cutting edge sonar survey products, technology development, expert knowledge and advice for projects in the ports, oil & gas and renewables sectors, worldwide. Thurn uses robot submarines under the ice to enable engineers to see the hazards that the ice may cause to infrastructure, pipelines and ships around the Arctic. It has received funding from the Industrial Strategy Challenge Fund.

For more examples go to [bit.ly/IS-map](https://bit.ly/IS-map)

New Anglia Local Enterprise Partnership is now working with the government to develop its Local Industrial Strategy.

**We have committed more than £45bn to Industrial Strategy programmes supporting research, local infrastructure, training and business growth throughout the United Kingdom. This money is already starting to be spent on the ground.**