


Lancashire





Our modern Industrial Strategy sets out our long-term plan to boost productivity by backing business to create high quality, well-paid jobs throughout the United Kingdom with investment in skills, industries and infrastructure.

In Lancashire a partnership of business and civic leaders – alongside other local partners – is working with the government to build on existing strengths, help business to flourish, and grow skills and opportunities for workers across the area.

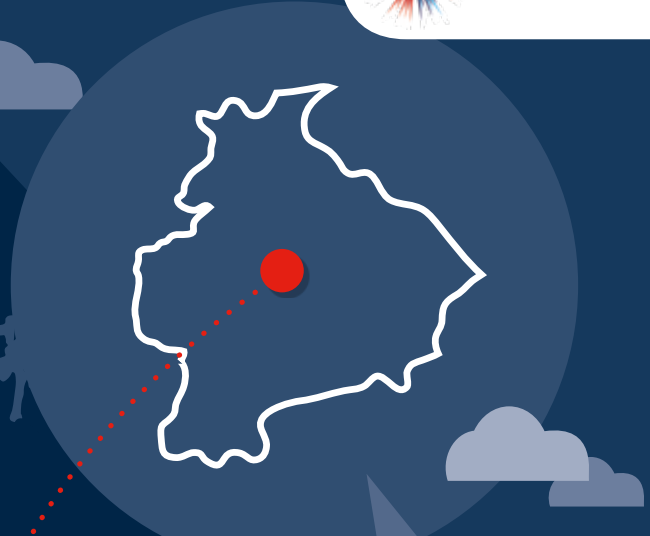
Industrial Strategy highlights include:

 **£391,000** to Mechatech Ltd to develop a futuristic Robotic Exoskeleton Prototype, which will support people with disabilities or chronic conditions.

 **£3.8m** to accelerate housebuilding by providing the vital infrastructure needed to access new and existing sites.

 **£3m** to provide residents with the digital connectivity they need through improvements in the availability of full fibre broadband.

 **697,200** people in employment, an increase of **42,100** since 2010. **53,200** workers directly benefiting from the National Living and Minimum Wages. **17,850** apprenticeships starts last year.



Population: 1,490,497
Businesses: 52,070

Case study: Edge Hill Technology Hub

The Hub will create new and refurbished, high quality space for teaching, learning, student employability, enterprise and knowledge exchange activities. The Hub received £3m in funding to support expansion in Digital Creative and Food Science (Biotechnology), including bioinformatics, product design and prototyping. It will also house a Knowledge Exchange and a suite that will allow users to experience real life scenarios such as emergency situations, complex surgery and lab reactions in virtual reality.

For more examples go to bit.ly/IS-map

Lancashire Local Enterprise Partnership is now working with the government to develop its Local Industrial Strategy.

We have committed more than £45bn to Industrial Strategy programmes supporting research, local infrastructure, training and business growth throughout the United Kingdom. This money is already starting to be spent on the ground.