

HM Land
Registry



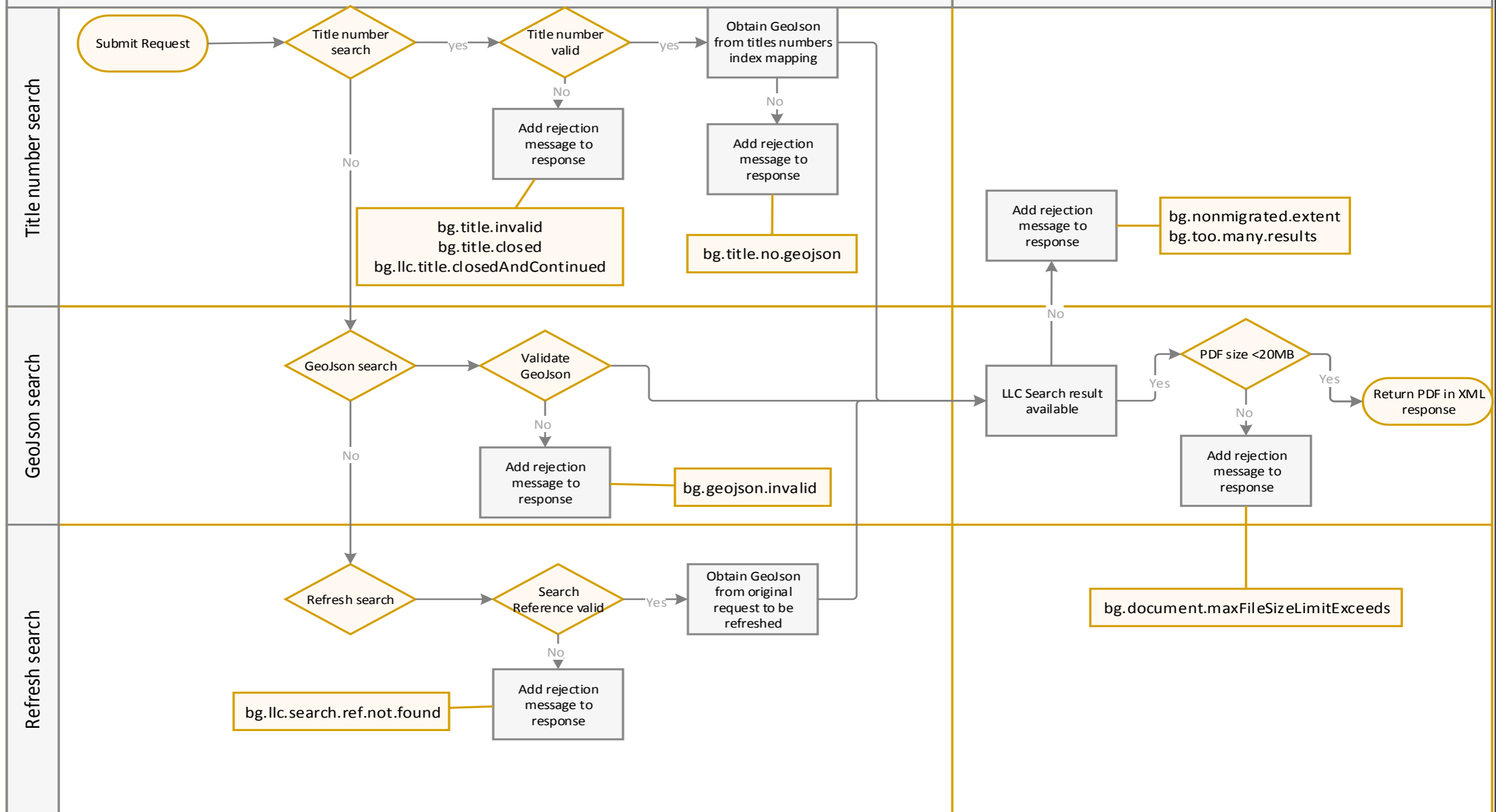
Business Gateway
Developer pack

Validation Diagram
Local Land Charges Search

Version 1.0

Local Land Charges Service via BG

Validate request



Local land Charges Search

	BG Code	Reason	Description
1	bg.title.invalid	Title number is invalid	The <Title Number> must exist on Land Registry systems.
2	bg.title.closed	This title number is closed	The <Title Number> has been closed on Land Registry systems and not continued.
3	bg.llc.title.closedAndContinued	Title Number <Title Number> has been closed and registration continued under Title Number <Title Number> . Please request a search using the new Title Number.	The <Title Number> has been closed on Land Registry systems and continued under the provided <Title Number>.
4	bg.fee.feeMismatch	Fee Amount provided does not match with the fee calculated by Land Registry.	If request contains an expected fee which is less than the actual fee and indicator 'ContinuelfFeeExceedsExpected' is False.
5	bg.geojson.invalid	The supplied GeoJSON is not valid	GEOJSON must be a FeatureCollection and can contain multiple features, polygons and multiple polygons.
6	bg.title.no.geojson	Unable to obtain GeoJSON from title number please try again with GeoJSON data	The Title Number used does not have index mapping to obtain GEOJSON data
7	bg.nonmigrated.extent	You are searching a non-migrated authority, edit your search area or contact the local authority	Your search area is in a local authority where the Local Land Charges data has not yet been migrated to HM Land Registry.
8	bg.llc.search.ref.not.found	Search reference not found, refresh searches are valid for 6 months after the initial search	Search reference not found on database or original search was over 6 months old
9	bg.document.maxFileSizeLimitExceeds	Generated PDF exceeds maximum size of 20971520 bytes	PDF's in excess of 20MB are not returned by Business Gateway
10	bg.too.many.results	Your search area has too many charges. Email HM Land Registry to search this area: locallandchargesregister@landregistry.gov.uk	More than 200 Local Land Charges identified from the search area

Local Land Charges Service

	Business Rule	Description
1	Title number valid	<Title Number> must exist on HM Land Registry systems and not be closed or closed and continued
2	Validate GeoJson	GEOJSON must be a FeatureCollection. It may contain Features, Polygons single and multiple.
3	Search reference valid	Search reference as provided in the <u>original</u> response. To allow a refresh of the search, the <u>original</u> search must have been made by the same Business unit and it must be within 6 months of the <u>original</u> searches date.
4	Non-migrated area	The whole of the search area is not yet migrated data to Land Registry.
5	Too many Local Land Charges results	If more than 200 Local Land Charges are identified for the search area, a response is not allowed through Business Gateway.
4	PDF oversize	Business Gateway currently does not return PDF's greater than 20MB. This limit has been increased in the past as broadband speeds have increased and may be reviewed in the future. **

** **Note: It is considered very unlikely that Local Land Charges searches will get anywhere near the maximum size of 20MB**