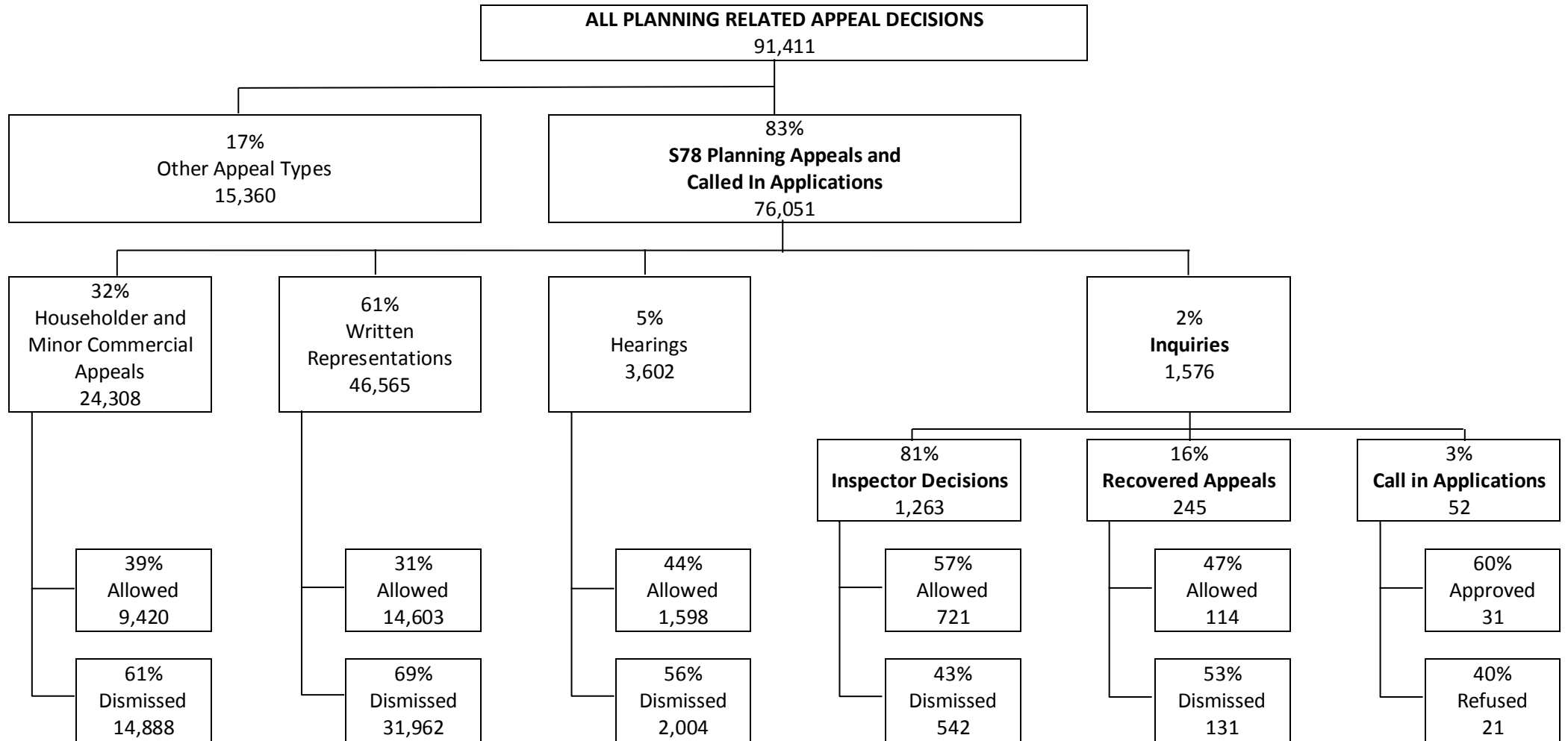


KEY APPEAL STATISTICS

All figures quoted for 5 year period (2013 – 2018)



Source: Planning Inspectorate Appeals Database

Notes:  
 “Other appeal types” include enforcement notice appeals (c9,300) and Listed Building Appeals (c2,700).  
 All figures exclude withdrawn appeals: 1509 written representations, 407 hearings and 526 inquiries were withdrawn during the 5 year period.  
 Inquiries total of 1576 cases: includes 16 cases where a report has been submitted to Secretary of State by PINS but no final decision has been made and excludes 42 re-determined decisions.