










Water and sewerage companies Environmental Performance Assessment 2017

Water and sewerage companies	Total pollution incidents per 10,000km ² (actual)	Serious pollution incidents per 10,000km ² (actual)	Discharge permit compliance % (failing sites)	Satisfactory sludge disposal (%)	Self-reported pollution incidents (%)	AMP ² / NEP ³ scheme delivery (%)	Security of supply index (SoSI)	Overall performance star rating (out of 4)
								
Anglian	30 (228)	1.2 (9)	98.6 (11)	100	71	100	100	★★★
Northumbrian	17 (50)	0.7 (2)	96.0 (7)	100	80	100	100	★★
Severn Trent	30 (280)	0.2 (2)	99.6 (3)	100	80	100	100	★★★★
Southern	31 (123)	1.0 (4)	98.2 (6)	100	70	100	100	★★★
South West	109 (169)	1.9 (3)	97.1 (9)	100	68	100	100	★★
Thames	28 (303)	0.9 (10)	99.5 (2)	100	73	100	97	★★★
United Utilities	23 (169)	0.1 (1)	98.8 (5)	100	82	100	100	★★★★
Wessex	23 (80)	0.9 (3)	99.0 (3)	100	78	100	100	★★★★
Yorkshire	43 (225)	0.8 (4)	97.8 (7)	100	83	100	100	★★★
Sector Average	31 (181)	0.7 (4)	98.6 (5.9)	100	76	100	99.7	

Green Better than expected
 Amber Slightly worse than expected
 Red Significantly worse than expected
 R A G Red, amber, green thresholds

Key Facts



Water and sewerage companies in England



Serves around 53.5 million people



Around 19,000 Environmental permits



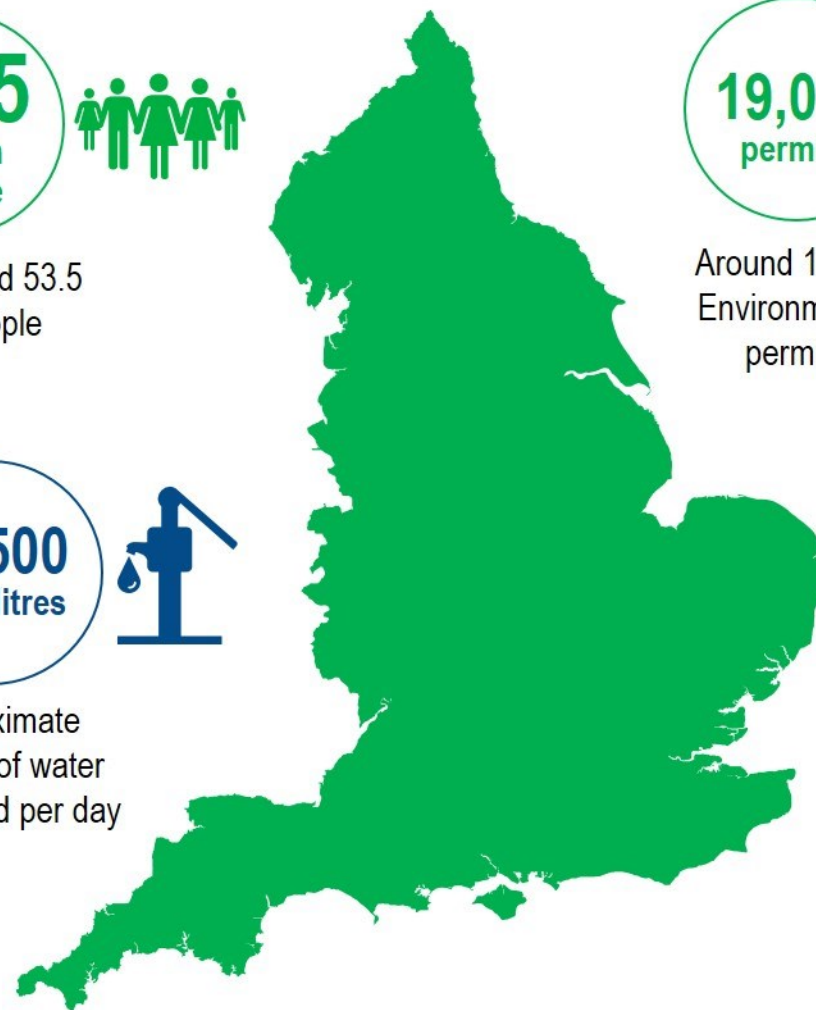
Approximate number of properties protected through improved sewer capacity and sustainable drainage measures⁴



Leakage as a percent of all water abstracted is 21%



Approximate amount of water abstracted per day



Around 3,500 permitted sewage treatment works with numeric limits



Approximate amount of satisfactory sludge used / disposed of in 2017