

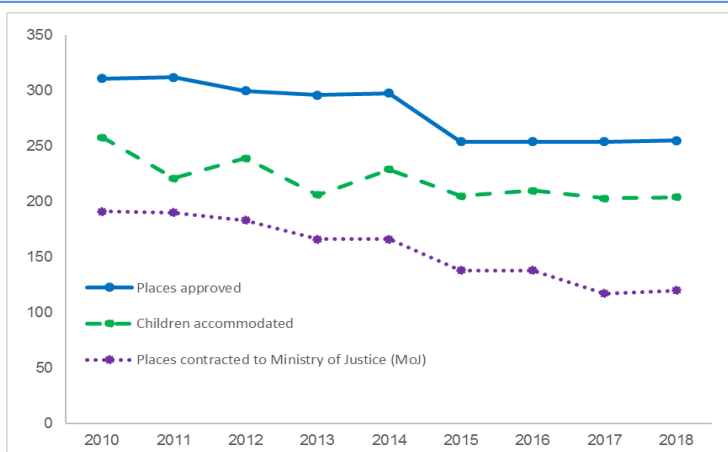


# Children accommodated in secure children's homes at 31 March 2018: England and Wales



07 June 2018

## The number of places approved for use and children accommodated in secure children's homes remain stable

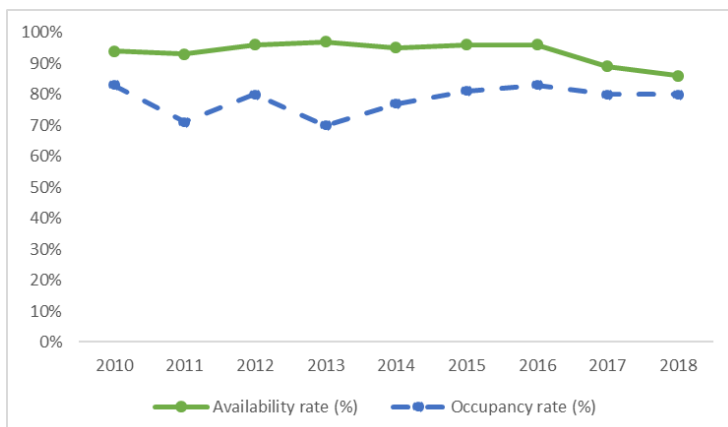


At 31 March 2018, there were 255 places approved for use in secure children's homes in England and Wales and 254 in the previous three years.

The number of children accommodated in secure children's homes was 204 at 31 March 2018 and similar to last year when there were 203.

At 31 March 2018, there were 120 places contracted to the Ministry of Justice (MoJ), an increase from 117 last year.

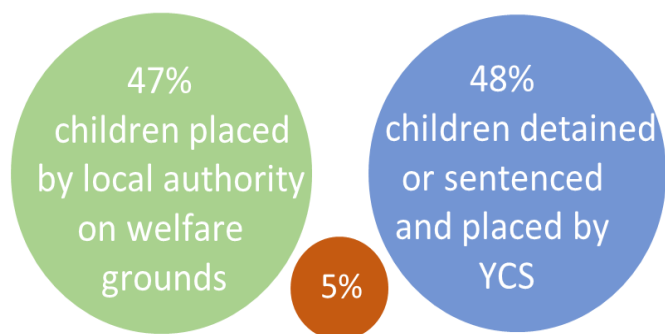
## Availability rate continues to fall whilst occupancy rate remains stable



At 31 March 2018, 86% of approved places in England and Wales were either in use or available for use. This has fallen from 89% in 2017 - this fall reflects the decrease in number of rooms resulting from ongoing building renovations in two homes since 2017.

At 31 March 2018, 80% of approved places in England and Wales were occupied, the same as last year.

## Percentage placed on welfare grounds has decreased this year



Children placed by local authority in a criminal justice context

The percentage of children placed by the local authority on welfare grounds at 31 March 2018 has fallen to 47% from 51% in 2017. The percentage of children detained or sentenced and placed by the Youth Custody Service has increased slightly to 48% from 46% last year. In addition, children placed by local authorities in a criminal justice context has increased to 5% from 3% last year.

# Contents

1.	Places approved and children accommodated (Table 1) .....	3
2.	Availability and Occupancy rates (Table 1) .....	4
3.	Type of placement (Tables 1 & 2) .....	5
4.	Gender and age (Tables 1 & 2) .....	7
5.	Length of stay (Tables 1 & 2) .....	8
6.	Accompanying tables.....	9
7.	National Statistics .....	9
8.	Technical information.....	9
9.	Get in touch .....	9
	Media enquiries .....	9
	Other enquiries/feedback.....	10

## About this release

This statistics publication provides data on secure children's homes (SCHs) in England and Wales. It includes the number of places approved and number of children accommodated as well as characteristics of those children accommodated: gender, age, length of stay and type of placement. This publication gives an annual snapshot of the status of SCHs in England and Wales at 31 March. All figures in this publication relate to the position at 31 March for England and Wales combined, unless otherwise stated.

## In this publication

The following tables are included in this publication:

- Main tables (Excel .xls)

The accompanying data quality, uses and methodology document, provides information on the data sources, their coverage and quality and explains the methodology used in producing the data.

## Feedback

We are changing how our releases look and welcome feedback on any aspect of this document at [cla.stats@education.gov.uk](mailto:cla.stats@education.gov.uk).

## 1. Places approved and children accommodated (Table 1)

There are currently 15 secure children's homes (SCHs) in England and Wales; this has remained stable for the last four years since the closure of 2 homes in 2014.

The number of approved places in the 15 SCHs has been stable over the last four years; there were 254 approved places from 2015 to 2017 and 255 in 2018. There has been a decrease of 56 approved places (18%) since 2010.

The number of children accommodated in SCHs was similar to last year with 204 children accommodated in 2018 and 203 in 2017. There has been an overall decrease of 54 (21%) children since 2010.

The number of approved places contracted to the Ministry of Justice (MoJ) has increased slightly this year from 117 in 2017 to 120 in 2018. This is a 71 places (37%) fewer than in 2010.

### Secure children's homes

Secure children's homes (SCHs) are children's homes which provide a locked environment and restrict a child or young person's liberty. They provide care and accommodation to children and young people who have been detained or sentenced by the criminal courts and those who have been remanded to secure local authority accommodation. They also accommodate and care for children and young people who have been placed there on welfare grounds by local authorities (LAs) and the courts. Secure children's homes provide children and young people with support tailored to their individual needs; to achieve this they have a high ratio of staff to young people and are generally small facilities.

### Youth Custody Service

From September 2017, the overall responsibility for commissioning of youth custody transferred to the Ministry of Justice (MoJ) from the Youth Justice Board. At the same time the Youth Custody Service (YCS) took over responsibility for individual placements of Children and Young People into youth custody and day-to-day management of youth custody.

### Young Offender Institution

Young Offender Institutions (YOIs) can accommodate young people aged from 15-21. However, the YCS is only responsible for commissioning YOIs which hold young males aged from 15-18. YOIs tend to be larger than SCHs and STCs with lower ratios of staff to young people. Consequently, young people who are more resilient and older may be placed in a YOI. Also young people who predominantly externalise their risk may be placed within a YOI.

### Secure Training Centre

Secure Training Centres (STCs) are available to place those young people who are a little older and perhaps more independent and more motivated to attend school, or have risk factors which would make a placement in a YOI inappropriate. There are three purpose built STCs in England offering secure provision to sentenced or remanded young people aged 12-17.

Overall the number of places and the number of children accommodated in secure children's homes has fallen over the past 8 years, though numbers have stabilised more recently.

**Table 1: Number of places approved, children accommodated and places contracted to the Ministry of Justice (MoJ) at 31 March**

England and Wales, 2010 to 2018

	<b>Places approved</b>	<b>All children accommodated</b>	<b>Of which : places contracted to MoJ</b>
2018	255	204	120
2017	254	203	117
2016	254	210	138
2015	254	205	138
2014	298	229	166
2013	296	206	166
2012	300	239	183
2011	312	221	190
2010	311	258	191

Source: DfE SA1 survey

## 2. Availability and Occupancy rates (Table 1)

The availability rate of approved places has fallen for the last two years, whilst the occupancy rate remains stable. In 2018, 86% of approved places were either in use or available for use compared to 89% in 2017. This is the second year the availability rate has fallen below 90%. Between the years of 2010 and 2016, the availability rate remained consistently above 90%. It should be noted that two homes were undergoing building renovations resulting in few or no rooms available in 2018 and there was a similar situation with some of homes in 2017.

### Availability rates

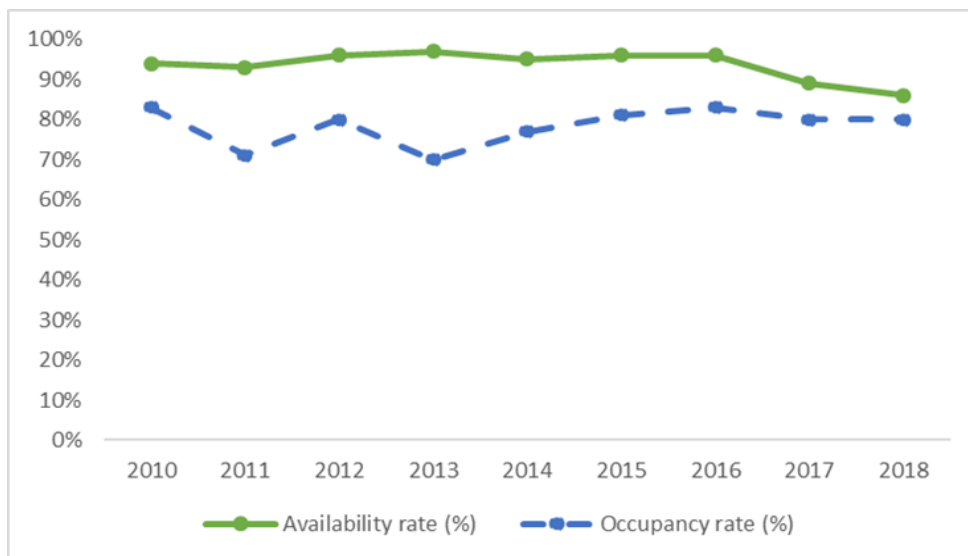
The availability rates are based on the number of places that were in use or available for use at 31 March (excluding any approved places that are out of service, e.g. undergoing development work). The percentages do not indicate the number of vacant places.

### Occupancy rates

The occupancy rates are based on the number of children accommodated at 31 March in relation to the number of places approved by the Secretary of State, and are displayed to the nearest whole number.

In 2018, 80% of approved places were occupied, the same as in 2017. In the period between 2010 and 2018, the occupancy rate has fluctuated between 70% (2013) and 83% (2010 and 2016).

**Figure A: Availability and occupancy rates over time**  
 England and Wales, 2010 to 2018



Source: DfE SA1 survey

### 3. Type of placement (Tables 1 & 2)

Of the children accommodated at 31 March 2018 in England and Wales, 47% were placed by the local authority on welfare grounds, compared with 51% in 2017 and 37% in 2010.

In 2018, 48% of children accommodated were placed by the YCS, compared with 46% in 2017 and 51% in 2010.

In 2018, 5% of children accommodated were placed by the designated local authority in a criminal justice context, compared with 3% in 2017 and 12% in 2010.

#### Welfare placement

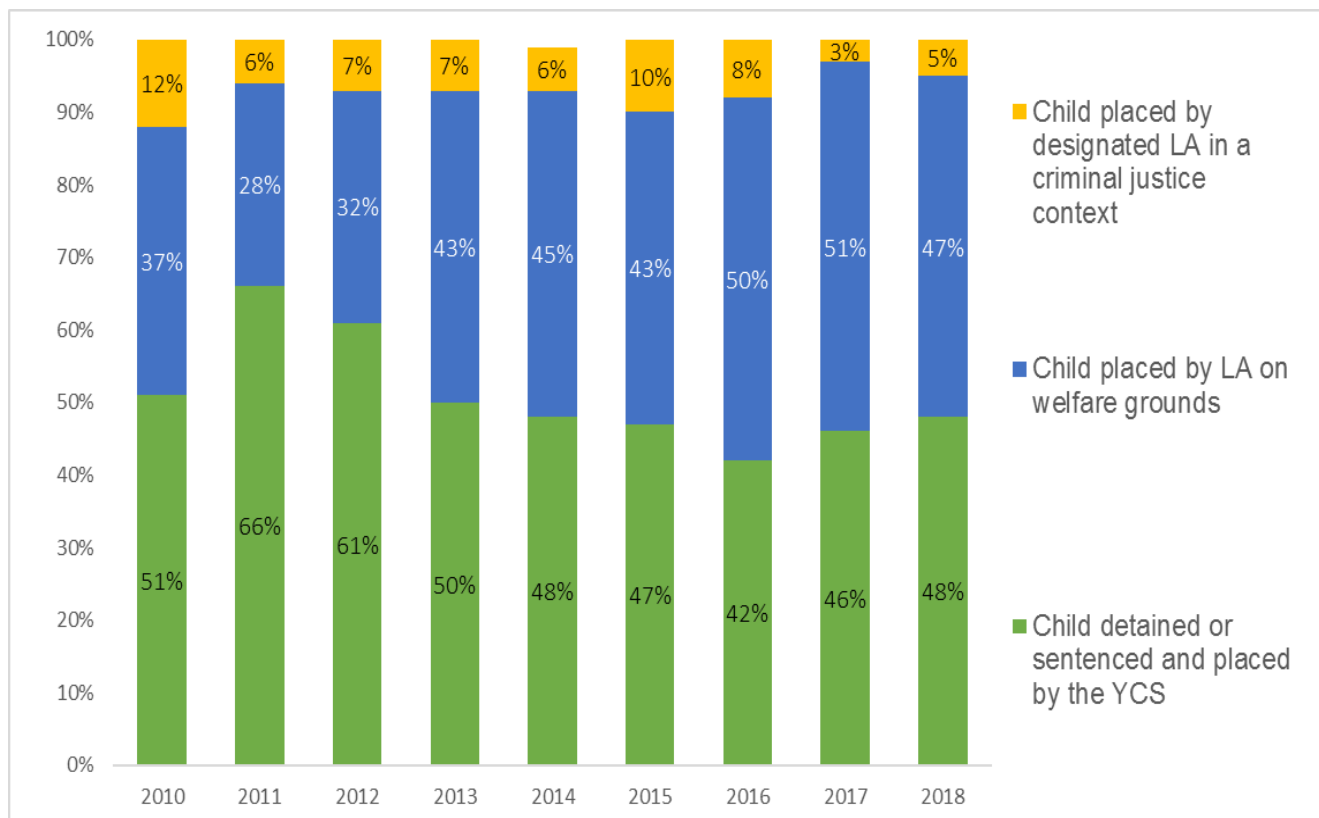
Children can be placed into the homes by their local authority (LA), under section 25 of the Children Act 1989 for the protection of themselves and/or others.

#### Youth Custody Service

From September 2017, the overall responsibility for commissioning of youth custody transferred to the Ministry of Justice (MoJ) from the Youth Justice Board. At the same time the Youth Custody Service (YCS) took over responsibility for individual placements of Children and Young People into youth custody and day-to-day management of youth custody.

In 2016 and 2017, the percentage of children accommodated in welfare placements surpassed the percentage placed by the YCS, reversing the previous trend in which YCS placements historically were the majority. However, in 2018, there is a slightly higher percentage of placements (48%) by YCS again compared with 47% placed by the local authority on welfare grounds.

**Figure B: Type of placement percentages for children accommodated in secure children’s homes at 31 March England and Wales, 2010 to 2018**



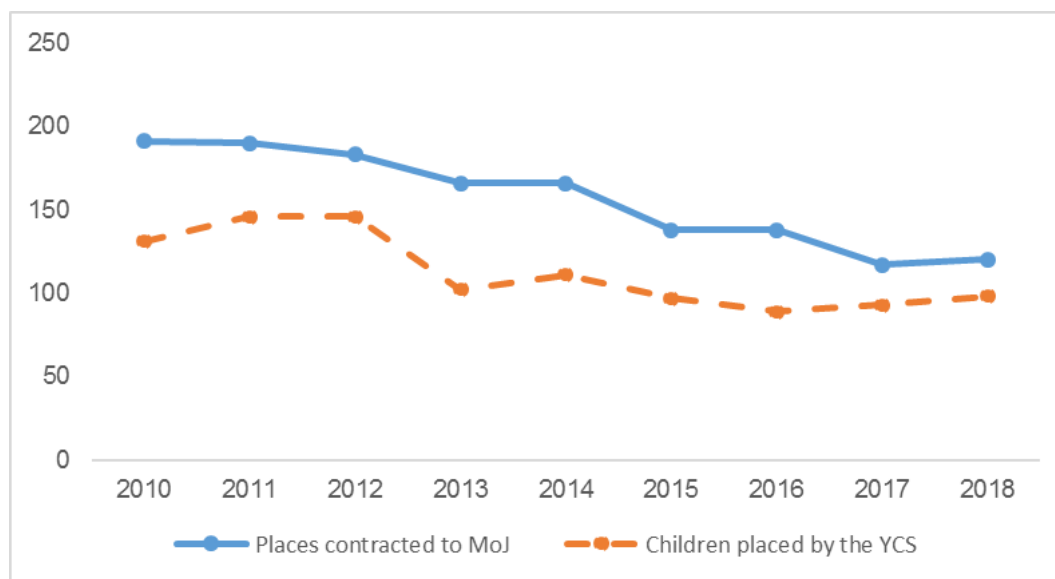
Source: DfE SA1 survey

Note: Due to rounding, the sum of the category percentages may not always total 100%.

Between 2010 and 2018, both the number of places contracted to the MoJ and the number of children placed by the YCS has fallen overall. However, in the last year, the number of places contracted to the MoJ has increased slightly from 117 to 120 and in the last two years the number of children placed by the YCS has increased slightly from 89 in 2016 to 98 in 2018.

**Figure C: Places contracted to the Ministry of Justice (MoJ) and children placed by the Youth Custody Service (YCS)**

England and Wales, 2010 to 2018



Source: DfE SA1 survey

## 4. Gender and age (Tables 1 & 2)

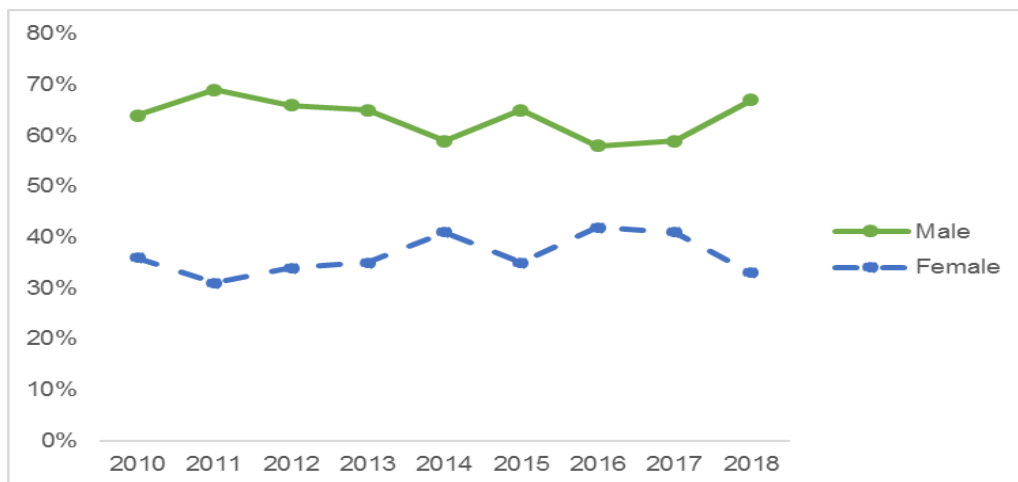
Of the 204 children accommodated in England and Wales at 31 March 2018, 67% (137) were male and 33% (67) were female.

Generally, the percentage in each age category in 2018 is broadly similar to that in 2017.

There has been a notable increase in the percentage of males at 31 March 2018 compared to 31 March 2017, however, the change is in line with previous gender fluctuations.

Information showing the gender split by type of placement is not collected.

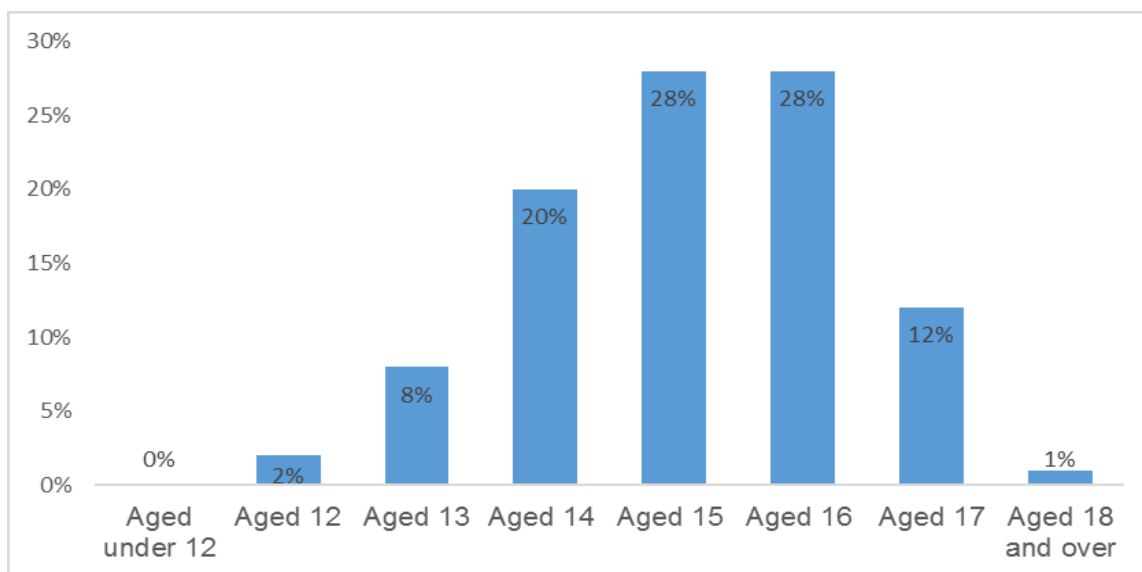
**Figure D: Percentage of male and female children accommodated in secure children's homes**  
England and Wales, 2010 to 2018



Source: DfE SA1 survey

In 2018, 56% of children accommodated were aged 15 or 16, slightly lower than the 61% in 2017. However, generally the percentage in each age category in 2018 is broadly similar to that in 2017. There were no children accommodated at 31 March 2018 aged under 12.

**Figure E: Age of children accommodated in secure children's homes**  
England and Wales, 2010 to 2018



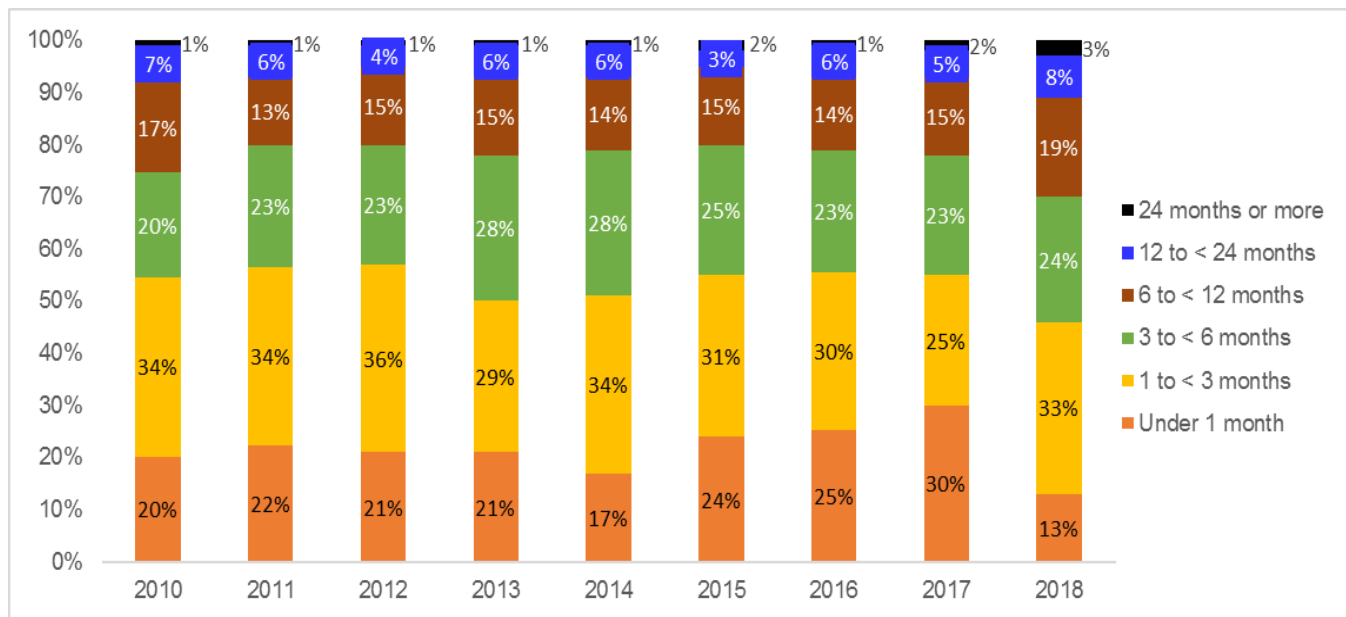
Source DfE SA1 survey

## 5. Length of stay (Tables 1 & 2)

Of the 204 children accommodated in England and Wales at 31 March 2018, 46% had been accommodated for less than 3 months, a decrease from 55% in 2017. This is the first time the percentage of children accommodated for less than 3 months has fallen below 50% in the period between 2010 and 2018.

In 2018, 11% of children accommodated were accommodated for a year or more. There has been an overall increase in the proportion of children accommodated for longer period in 2018. This reflects the decrease in the proportion of children accommodated for shorter period, for example, in 2017, 30% of children were accommodated for under one month, but in 2018 this had reduced to 13%. In recent years the proportion of children who had been accommodated for less than 3 months has remained around 55% but this has fallen to 46% in 2018.

**Figure F: Length of stay of children accommodated**  
England and Wales, 2010 to 2018



Source: DfE SA1 survey

Note: Due to rounding, the sum of the category percentages may not always total 100%.



## 6. Accompanying tables

The following tables are available in Excel format on the department's statistics website:

<https://www.gov.uk/government/collections/statistics-secure-children-s-homes>.

- 1 Places approved and children accommodated in secure children's homes at 31 March by gender, age, length of stay and type of placement (numbers and percentages), England and Wales, 2010 to 2018
- 2 Places approved and children accommodated in secure children's homes at 31 March by type of placement (numbers and percentages), England, 2010 to 2018
- 3 Places approved and available, and children accommodated at 31 March by individual secure children's homes (numbers and percentages), 2010 to 2018

When reviewing the tables, please note that:

The National Statistics Code of Practice requires that reasonable steps should be taken to ensure that all published or disseminated statistics produced by the DfE protect confidentiality. For confidentiality purposes, numbers from 1 to 5 inclusive and percentages based on a numerator between 1 and 5 inclusive and a denominator between 1 and 10 inclusive have been replaced in the published tables by a cross (x). To ensure the suppressed number cannot be identified by simple arithmetic secondary suppression may be required. Where any number is shown as zero (0), the original figure submitted was zero (0). "." means not applicable.

Further information on the tables can be found in the accompanying methodology document.

## 7. National Statistics

The United Kingdom Statistics Authority has designated these statistics as National Statistics, in accordance with the Statistics and Registration Service Act 2007 and signifying compliance with the Code of Practice for Official Statistics.

Designation can be broadly interpreted to mean that the statistics:

- meet identified user needs;
- are well explained and readily accessible;
- are produced according to sound methods, and
- are managed impartially and objectively in the public interest.

Once statistics have been designated as National Statistics it is a statutory requirement that the Code of Practice shall continue to be observed.

The Department has a set of [statistical policies](#) in line with the Code of Practice for Official Statistics.

## 8. Technical information

A quality and methodology information document accompanies this publication. This provides further information on the data sources, their coverage and quality and explains the methodology used in producing the data, including how it is validated and processed.

## 9. Get in touch

### Media enquiries

Press Office News Desk, Department for Education, Sanctuary Buildings, Great Smith Street, London SW1P 3BT.

Tel: 020 7783 8300

## **Other enquiries/feedback**

Justin Ushie, Children Looked After Data Team, Data Insight and Statistics Division, Department for Education, Bishopsgate House, Feethams, Darlington, DL1 5QE. Tel: 01325 340817. Email: [CLA.STATS@education.gov.uk](mailto:CLA.STATS@education.gov.uk).



Department  
for Education



© Crown copyright 2018

This publication (not including logos) is licensed under the terms of the Open Government Licence v3.0 except where otherwise stated. Where we have identified any third party copyright information you will need to obtain permission from the copyright holders concerned.

To view this licence:

visit [www.nationalarchives.gov.uk/doc/open-government-licence/version/3](http://www.nationalarchives.gov.uk/doc/open-government-licence/version/3)

email [psi@nationalarchives.gsi.gov.uk](mailto:psi@nationalarchives.gsi.gov.uk)

write to Information Policy Team, The National Archives, Kew, London, TW9 4DU

About this publication:

enquiries Justin Ushie, Children Looked After Data Team, Data Insight and Statistics Division, Department for Education, Bishopsgate House, Feetham, Darlington, DL1 5QE. Tel: 01325 340817. Email: [CLA.STATS@education.gov.uk](mailto:CLA.STATS@education.gov.uk)

download [hyperlink to web address](#)

Reference: [Publication title]



Follow us on Twitter:  
[@educationgovuk](https://twitter.com/educationgovuk)



Like us on Facebook:  
[facebook.com/educationgovuk](https://facebook.com/educationgovuk)