



19th April 2018

United Kingdom Poultry and Poultry Meat Statistics – March 2018

Contents:

| | |
|---|-----------|
| Section 1: Commentary | page 2 |
| Section 2: Numbers of eggs set and chicks placed by UK hatcheries | pages 2-4 |
| Section 3: Poultry meat production | pages 5-6 |
| Section 4: Data users, methodology, notes and revisions policy | pages 7-8 |

Key points

This release shows the latest monthly information on poultry statistics, including hatchery output, slaughtering and meat production volumes.

The key results for **March 2018** in comparison to **March 2017** are given below:

- UK commercial layer chick placings were down 2.2% to 3.0 million chicks.
- UK broiler chick placings were up 1.5% at 84.0 million chicks.
- Turkey chick placings were up by 19% at 0.9 million chicks.
- Turkey slaughterings were down 15% at 0.7 million birds.
- UK broiler slaughterings were 6.0% higher at 80.9 million birds.
- Total UK poultry meat production was 135.7 thousand tonnes, up 9.3%.

The next release of this notice is **at 09:30 on 24th May 2018**. Full time series are available to download at <https://www.gov.uk/government/publications/poultry-and-poultry-meat-statistics>

Enquiries on this publication to: Julie Rumsey, Department for Environment, Food and Rural Affairs, Room 201, Foss House, Kings Pool, 1 - 2 Peasholme Green, York YO1 7PX.
Tel: ++ 44 (0)2080 266306, email:Julie.rumsey@defra.gsi.gov.uk

A National Statistics publication. National Statistics are produced to high professional standards. They undergo regular quality assurance reviews to ensure that they meet customer needs. They are produced free from any political interference. For general enquiries about National Statistics, contact the National Statistics Public Enquiry Service: tel. 0845 601 3034 email info@statistics.gov.uk. You can also find National Statistics on the internet at <http://www.statistics.gov.uk/>.

Section 1: Commentary

The number of eggs set (incubated) each month indicates how many chicks are available for placing into poultry systems in future months (hen eggs take around 21 days to hatch, turkey eggs take around 28 days). Once hatched, placed chicks give an indication of future poultry meat and egg production. Consumer demand strongly affects broiler chick and turkey poult placings. There are clear peaks (of turkeys) and troughs (of broilers) in the average weekly placings figures in the months running up to Christmas (Figs 2.1 and 2.2). This translates into equivalent high/low levels in the slaughtering volumes over the Christmas period (Figs 3.1 and 3.2).

Section 2: Numbers of eggs set and chicks placed by UK hatcheries

Tables 2.1 to 2.4 show the number of eggs set and chicks placed by United Kingdom hatcheries in the most recent months. Longer time series are available at the web link on the front page.

Please note that the surveys run according to statistical, rather than calendar, months. 2016 was a 53 week statistical year, with the additional week accounted for by making December a 5 week month. The Methodology section provides more explanation of the statistical week system.

Table 2.1: Number of eggs set per month by UK Hatcheries

| | millions | | | | |
|-------------------------------------|------------|--------------|---------------|------------|----------|
| | March 2017 | January 2018 | February 2018 | March 2018 | yr on yr |
| | 4 weeks | 5 weeks | 4 weeks | 4 weeks | % change |
| Commercial broilers ^(a) | 100.0 | 121.3 | 100.1 | 99.4 | -0.5% |
| Broiler breeders ^{(a) (b)} | 5.4 | 7.7 | 6.3 | 5.6 | 4.6% |
| Turkeys ^(c) | 1.2 | 1.6 | 1.2 | 1.1 | -4.4% |
| Commercial layers ^(c) | 7.8 | 10.0 | 8.7 | 8.2 | 4.8% |

(a) Includes eggs set to produce chicks for placing outside the UK

(b) Includes Broiler parents and grandparents

(c) Only includes eggs set for commercial stock, including those for placing outside the UK

Statistical months have either 4 or 5 weeks so it is difficult to compare monthly trends. To give a clearer indication of trends, Table 2.2 below shows the average number of eggs set per week.

Table 2.2: Average number of eggs set per week by UK Hatcheries

| | millions | | | | | | | | | | | | | | |
|-------------------------------------|----------|------|------|------|------|------|------|------|------|------|------|------|------|----------|-------|
| | 2017 | | | | | | | | | | | | 2018 | | Month |
| | Mar | Apr | May | Jun | Jul | Aug | Sep | Oct | Nov | Dec | Jan | Feb | Mar | % change | |
| Commercial broilers ^(a) | 25.0 | 23.3 | 25.3 | 24.1 | 23.3 | 24.4 | 23.8 | 21.4 | 25.2 | 24.3 | 24.3 | 25.0 | 24.9 | -0.7% | |
| Broiler breeders ^{(a) (b)} | 1.3 | 1.4 | 1.6 | 1.4 | 1.3 | 1.3 | 1.4 | 1.2 | 1.6 | 1.4 | 1.5 | 1.6 | 1.4 | -10% | |
| Turkeys ^(c) | 0.3 | 0.3 | 0.6 | 0.7 | 0.6 | 0.5 | 0.3 | 0.3 | 0.3 | 0.3 | 0.3 | 0.3 | 0.3 | -1.8% | |
| Commercial layers ^(c) | 1.9 | 2.3 | 1.9 | 2.4 | 2.0 | 2.2 | 2.9 | 2.1 | 2.0 | 2.1 | 2.0 | 2.2 | 2.0 | -5.9% | |

(a) Includes eggs set to produce chicks for placing outside the UK

(b) Includes Broiler parents and grandparents

(c) Only includes eggs set for commercial stock, including those for placing outside the UK

Table 2.3: Chicks and poults placed per month in the UK by UK Hatcheries

| | millions | | | | |
|--|-----------------------|-------------------------|--------------------------|-----------------------|----------------------|
| | March 2017 4 weeks | January 2018 5 weeks | February 2018 4 weeks | March 2018 4 weeks | yr on yr % change |
| Commercial broilers ^(a) | 82.8 | 102.0 | 82.2 | 84.0 | 1.5% |
| Female broiler breeders ^(b) | 0.6 | 1.0 | 0.7 | 0.5 | -16% |
| Turkey poults ^(c) | 0.8 | 1.2 | 0.9 | 0.9 | 19% |
| Commercial layers | 3.1 | 3.8 | 3.1 | 3.0 | -2.2% |

(a) Includes 'by-product' chicks

(b) Female parents only. Excludes grandparent chicks and 'by-product' chicks. Includes imported female parent chicks

(c) Including female breeder poults

Table 2.4 below shows the average number of chicks and poults placed per week to remove the statistical month effect, as in earlier tables.

Table 2.4: Average numbers of chicks and poults placed per week in the UK by UK Hatcheries

| | millions | | | | | | | | | | | | | Month |
|--|----------|------|------|------|------|------|------|------|------|------|------|------|------|----------|
| | 2017 | | | | | | | | | | | 2018 | | % change |
| | Mar | Apr | May | June | July | Aug | Sep | Oct | Nov | Dec | Jan | Feb | Mar | |
| Commercial broilers ^(a) | 20.7 | 19.9 | 20.8 | 20.7 | 20.0 | 21.5 | 20.4 | 19.8 | 18.8 | 21.3 | 20.4 | 20.6 | 21.0 | 2.2% |
| Female broiler breeders ^(b) | 0.1 | 0.1 | 0.2 | 0.1 | 0.2 | 0.2 | 0.1 | 0.2 | 0.1 | 0.2 | 0.2 | 0.2 | 0.1 | -29% |
| Turkey poults ^(c) | 0.2 | 0.2 | 0.3 | 0.3 | 0.5 | 0.5 | 0.4 | 0.2 | 0.2 | 0.2 | 0.2 | 0.2 | 0.2 | 1.3% |
| Commercial layers | 0.8 | 0.7 | 0.9 | 0.6 | 0.8 | 0.6 | 0.8 | 0.9 | 0.8 | 0.7 | 0.8 | 0.8 | 0.8 | -3.3% |

(a) Includes 'by-product' chicks

(b) Female parents only. Excludes grandparent chicks and 'by-product' chicks. Includes imported female parent chicks

(c) Including female breeder poults

Figure 2.1: Average number of broiler chicks placed per week by UK Hatcheries

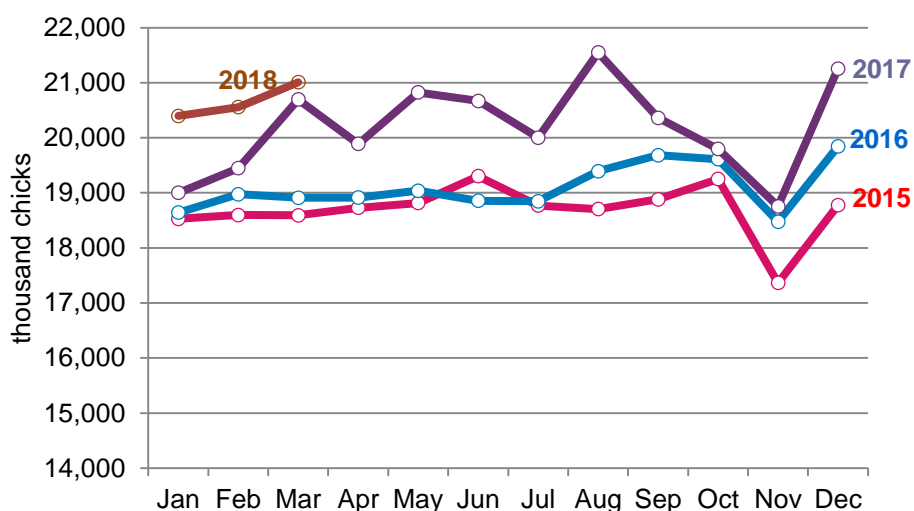


Figure 2.2: Average number of turkey poulters placed per week by UK Hatcheries

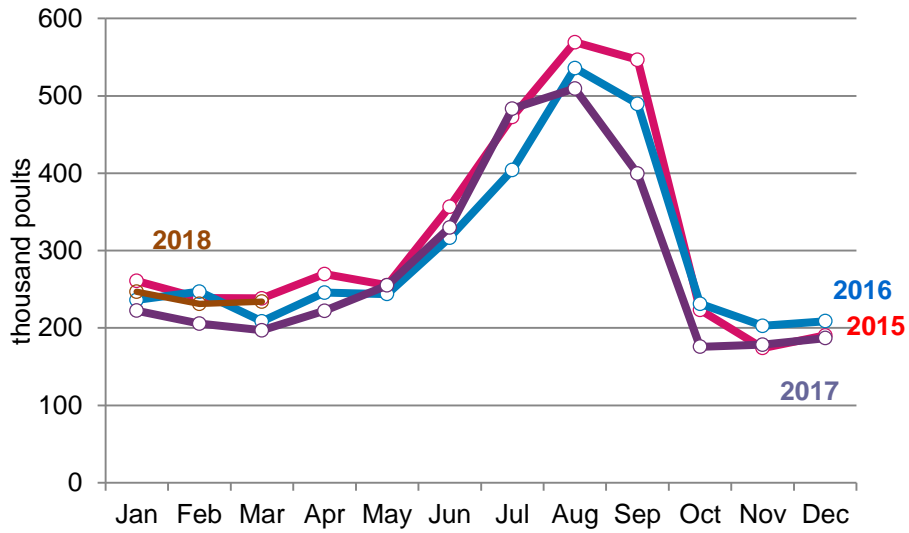
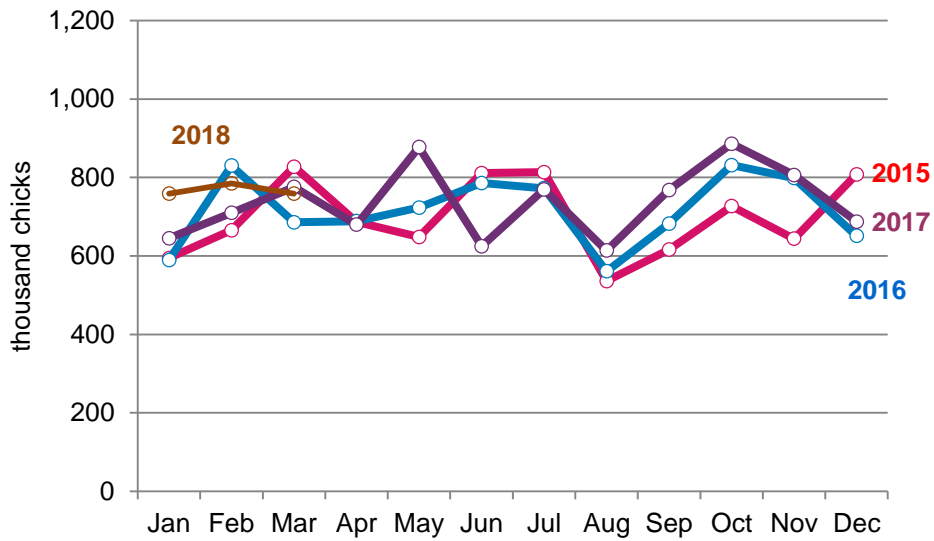


Figure 2.3: Average number of layer chicks placed per week by UK Hatcheries



Section 3: Poultry meat production

Tables 3.1 to 3.4 below show the number of poultry slaughtered, average liveweights of poultry and volumes of poultry meat production in the UK.

Table 3.1: Number of poultry slaughtered per month in the UK

| | million birds | | | | |
|-----------------------------|-------------------|-------------------|-------------------|-------------------|----------------------|
| | Mar-17 4 weeks | Jan-18 5 weeks | Feb-18 4 weeks | Mar-18 4 weeks | yr on yr % change |
| Broilers | 76.3 | 100.0 | 80.9 | 80.9 | 6.0% |
| Boiling fowl ^(a) | 3.7 | 4.7 | 4.8 | 4.4 | 18% |
| Turkeys | 0.8 | 1.9 | 1.2 | 0.7 | -15% |

(a) Includes spent hens and spent breeders

Table 3.2 below shows the average number of poultry slaughtered per week to remove the statistical week effect, as in earlier tables.

Table 3.2: Average number of poultry slaughtered per week in the UK

| | million birds | | | | | | | | | | | | | Month |
|-----------------------------|---------------|------|------|------|------|------|------|------|------|------|------|------|------|-------|
| | 2017 | | | | | | | | | | | | 2018 | % chg |
| | Mar | Apr | May | June | July | Aug | Sep | Oct | Nov | Dec | Jan | Feb | Mar | |
| Broilers | 19.1 | 20.1 | 19.8 | 20.2 | 21.4 | 20.3 | 20.5 | 20.6 | 19.5 | 19.0 | 20.0 | 20.2 | 20.2 | 0.1% |
| Boiling fowl ^(a) | 0.9 | 1.1 | 1.1 | 1.0 | 1.0 | 1.1 | 1.0 | 1.2 | 0.9 | 1.0 | 0.9 | 1.2 | 1.1 | -8.0% |
| Turkeys | 0.2 | 0.2 | 0.2 | 0.2 | 0.2 | 0.2 | 0.2 | 0.3 | 0.4 | 0.5 | 0.4 | 0.3 | 0.2 | -41% |

(a) Includes spent hens and spent breeders

Table 3.3: Average liveweights per bird at point of slaughter in England & Wales

| | kilograms | | | | | | | | | | | | | yr on yr |
|--------------|-----------|------|------|------|------|------|------|------|------|------|------|------|------|----------|
| | 2017 | | | | | | | | | | | | 2018 | % change |
| | Mar | Apr | May | June | July | Aug | Sep | Oct | Nov | Dec | Jan | Feb | Mar | |
| Broilers | 2.2 | 2.2 | 2.2 | 1.9 | 2.3 | 2.3 | 2.3 | 2.2 | 2.2 | 2.2 | 2.2 | 2.1 | 2.1 | -2.4% |
| Boiling fowl | 2.1 | 2.3 | 2.3 | 2.2 | 2.3 | 2.1 | 2.2 | 2.5 | 2.0 | 2.1 | 2.1 | 2.0 | 2.2 | 5.8% |
| Turkeys | 12.1 | 13.2 | 13.1 | 13.1 | 13.1 | 12.8 | 12.8 | 15.8 | 10.1 | 10.3 | 15.2 | 14.9 | 12.9 | 6.8% |

Table 3.4: Volume of poultry meat produced per month in the UK ^(a)

| | thousand tonnes carcase weight | | | | |
|-----------------------------|--------------------------------|-------------------|-------------------|-------------------|----------------------|
| | Mar-17 4 weeks | Jan-18 5 weeks | Feb-18 4 weeks | Mar-18 4 weeks | yr on yr % change |
| Broilers | 108.6 | 153.1 | 114.3 | 119.2 | 9.7% |
| Boiling fowl | 5.1 | 6.6 | 6.3 | 6.3 | 23% |
| Turkeys | 8.1 | 24.6 | 14.9 | 7.7 | -4.5% |
| Ducks | 2.3 | 3.0 | 2.4 | 2.4 | 4.5% |
| Total ^(b) | 124.2 | 187.3 | 137.9 | 135.7 | 9.3% |

(a) Converted to whole bird equivalent carcase weight, net of offal

(b) Excludes other poultry types, e.g. geese

Figure 3.1: Average number of broilers slaughtered per week in the UK

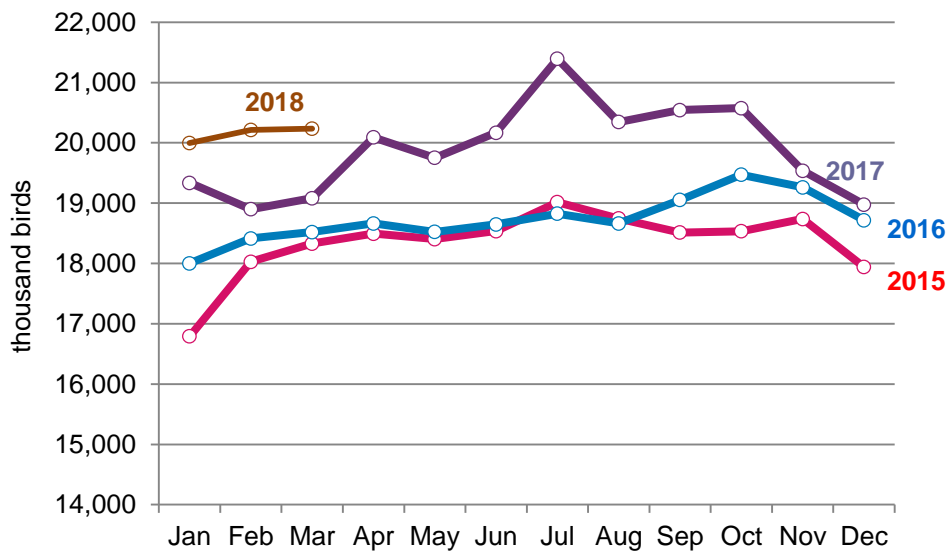
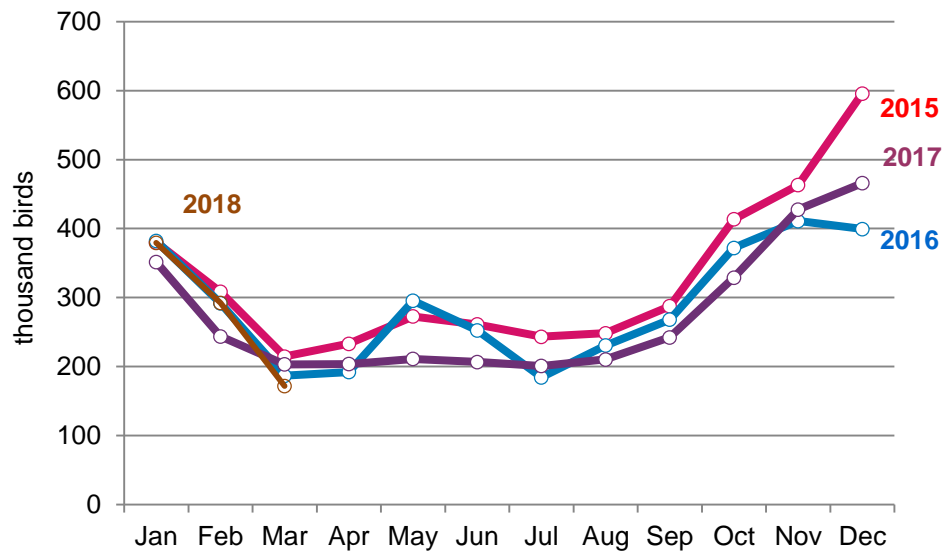


Figure 3.2: Average numbers of turkeys slaughtered per week in the UK



Section 4: Data users, methodology notes and revisions policy

Data users

1. Users of the poultry data include the EU Commission who require an extensive range of statistics on the poultry sector. The numbers of poultry slaughtered and tonnages of poultry meat produced are required monthly under Regulation EC 1165/2008 (Animal Production). The hatchery statistics are also required monthly, along with an annual summary of the structure and size distribution of UK hatcheries under Regulations EC 617/2008 and 1234/2007 (Poultry Farming). Detailed information on these regulations is available by selecting “Animal Production” or “Poultry Farming” at <http://epp.eurostat.ec.europa.eu/portal/page/portal/agriculture/legislation>.

European level statistics on poultry production (which includes data tables showing results at EU Member State level) are available at http://epp.eurostat.ec.europa.eu/statistics_explained/index.php/Agricultural_production_-_animals

2. Representatives of the poultry industry are also major users of the data. The data on Commercial layer chick sets and placings are the key sector indicators for the British Egg Industry Council (BEIC) as they indicate the future laying flock size (and hence egg production). The British Poultry Council also makes heavy use of the data as the Commercial broiler chick sets and placings give evidence on the current state of the industry and predict the available supplies of meat for the coming year. This, in turn, can affect poultry meat prices and trade decisions on levels of imports and exports to maintain supply. The breeder chick placings are also a key measure of future flock sizes and intentions of the sector. The Home Grown Cereals Authority (HGCA), part of the Agricultural and Horticultural Development Board, rely on the chick placings data as a good indicator of feed demand and hence grain usage by the sector.

Our statistics are also often heavily referenced in industry publications such as “Poultry World”.

Methodology

3. Defra runs a monthly survey of registered England and Wales hatcheries. It is a statutory survey of 42 respondents that collects information on the number of eggs set and the chicks placed by hatcheries. The response rate is typically 100%. A similar survey is run by the Rural & Environment Science and Analytical Service (RESAS) for Scotland. Scottish poultry statistics are available in the Economic Report on Scottish Agriculture at <http://www.scotland.gov.uk/Topics/Statistics/Browse/Agriculture-Fisheries/PubEconomicReport> (Section 5.5). This website also contains contact details and more information.
4. Poultry slaughterings and poultry meat production statistics are estimated from the number of chicks placed by hatcheries and day old chick imports using industry advice on life-spans and mortality. Average liveweights for each type of poultry are obtained from Defra's monthly survey of England and Wales poultry slaughterhouses. This is a sample survey of large poultry slaughterhouses, around 26 respondents. Similar surveys are run in Scotland and Northern Ireland. Meat

production is calculated from the estimated number of birds slaughtered and the average liveweights. The liveweight is converted to carcase weight using industry advice on conversion factors.

5. Monthly survey results are produced using the statistical week system (this enables comparable quarter on quarter results). This method allocates 13 weeks per quarter of a year, which breaks down into a “5 week month”, followed by two lots of “4 week months”. Monthly results, therefore, are not directly comparable to each other as they are based on differing numbers of weeks. Every 6 years this produces a 53 week statistical year; 2016 is such a year. In order to account for this extra week, December 2016 data have been revised to 5 weeks instead of the usual 4 weeks. To enable direct comparisons, weekly averages have been calculated which divide the monthly figures by the number of statistical weeks in the relevant month.
6. Survey data are subject to a variety of validation checks which identify inconsistencies in the data. All data are cleaned prior to publication in discussion with the survey respondents.

Contact details are available on the front page of this notice, for you to send feedback or ask questions about the information provided.

Revisions policy

7. Figures in this release are provisional and subject to revision. We will provide information about any revisions we make to previously published information in this statistics release and the associated datasets. Revisions could occur for various reasons, including:
 - a. if we have not received survey data from respondents we make an estimate based on their previous returns. These estimates are replaced with actual survey data when it is received.
 - b. survey respondents occasionally supply amended figures for previous periods.

Northern Ireland data for January, February and March 2018 is estimated.

There have been revisions to December 2017, January and February 2018 data.