

HS2

Innovation Meet the contractor

10th May 2018

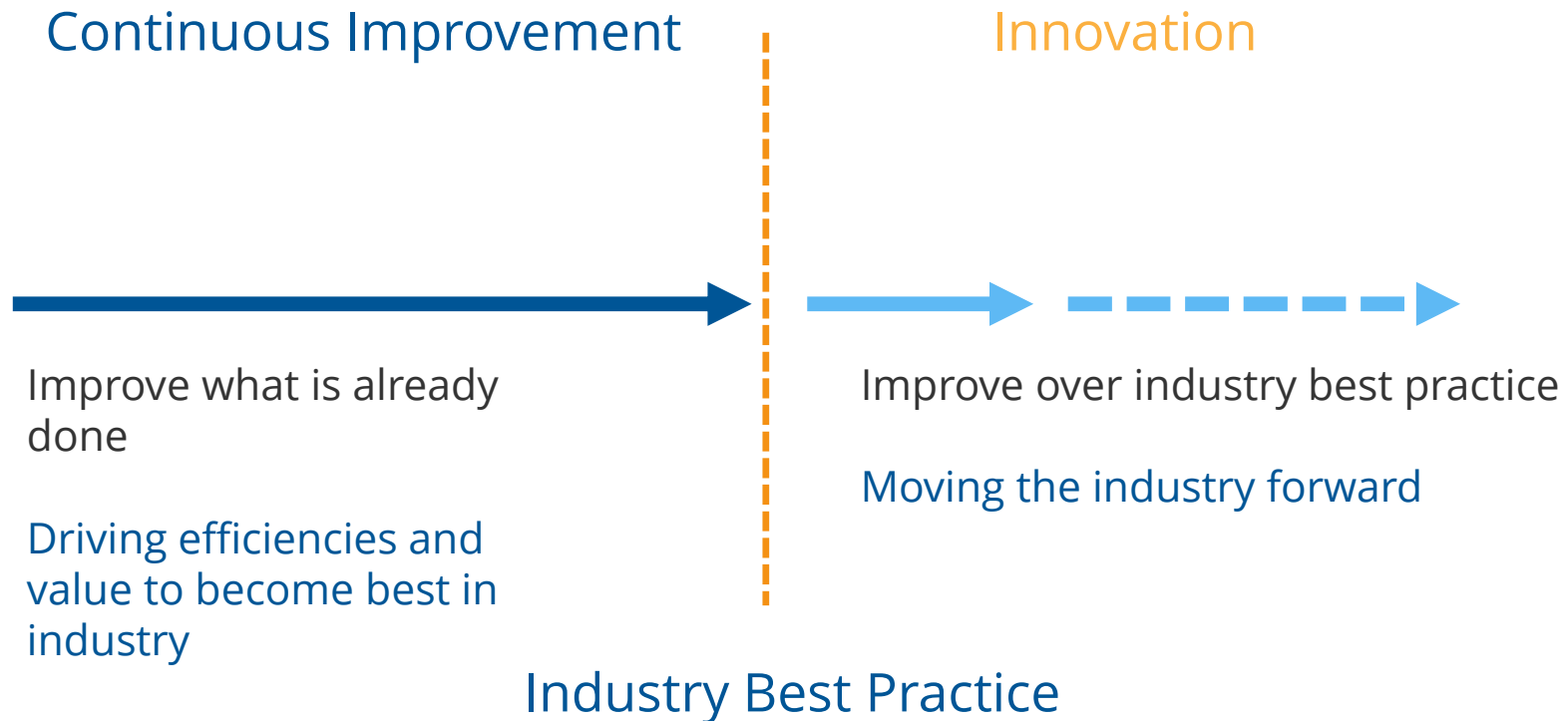
The Vox Conference Centre

Innovation

- What does innovation mean?
- Innovation support
- The innovation process
- Winning innovation
- Q&A

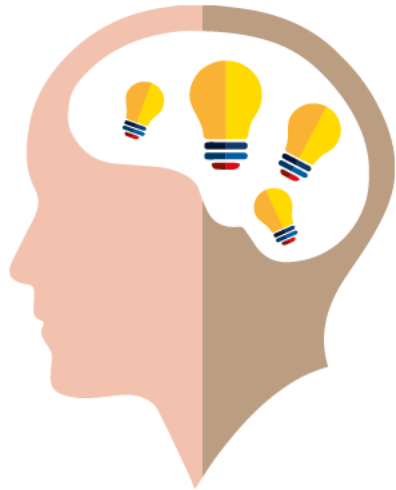


What does innovation mean to HS2



Innovation

“Innovation, *relates to delivering something differently, to provide a benefit beyond that which is considered industry best practice. Innovations could be related to products, materials, people or processes/methods and are not limited to technology.”*



Ideas



Innovation



Knowledge



Innovation Attributes



Innovation support

HS2 recognise that many innovations will be delivered by the supply chain

Support will be provided when innovations are...



*A change in
scope*



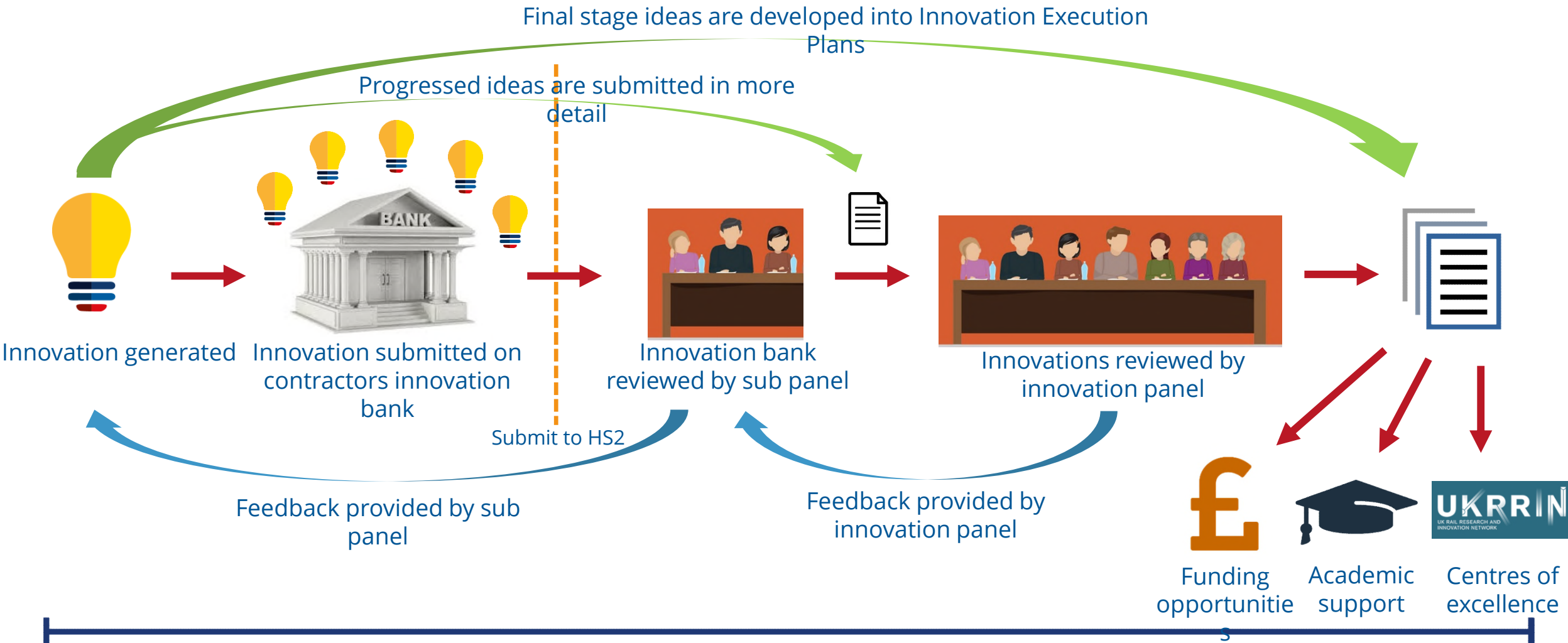
Outside specification



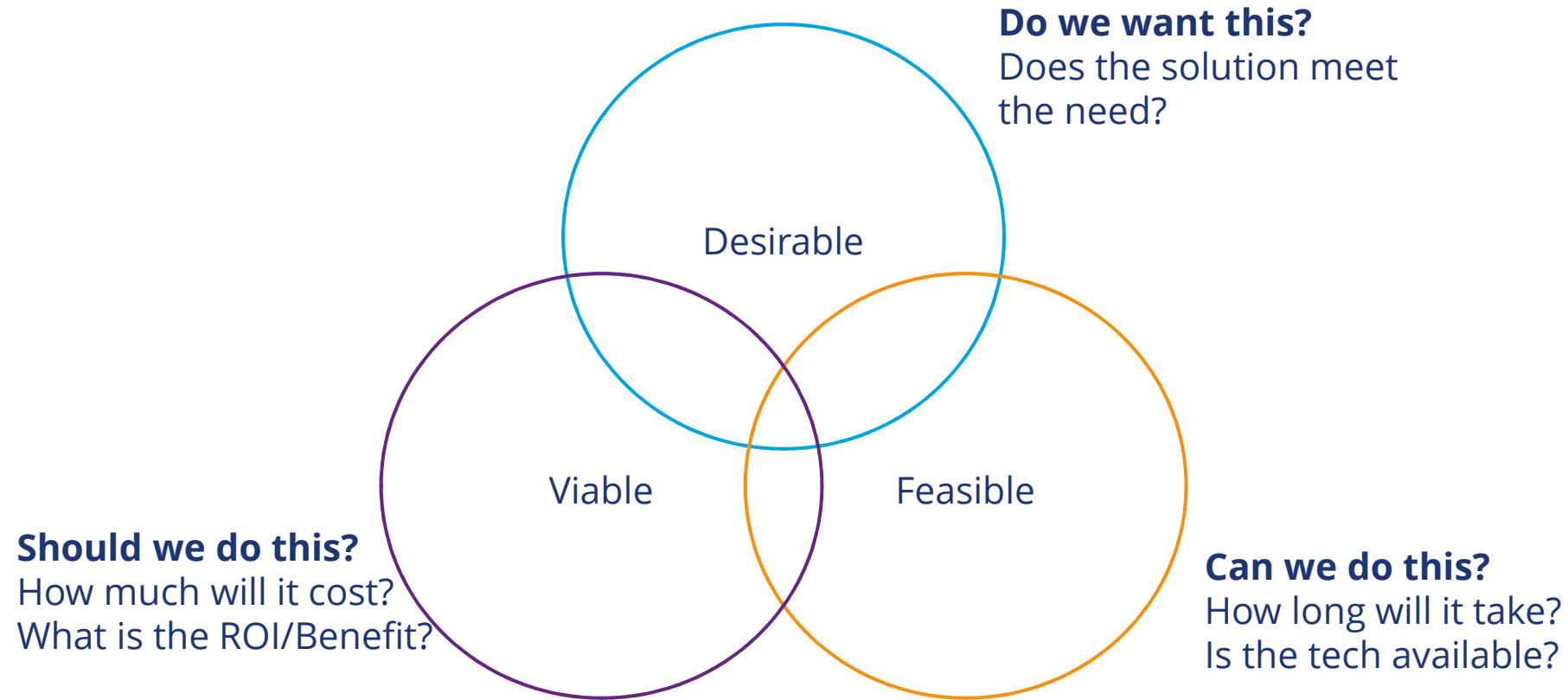
Additional Risk



Innovation process



Reviewing innovations



Perceived innovation blockers



*Bad
communication*



*Competition &
Collusion*



*Intellectual
Property*



Bureaucracy



Winning innovation

Improving health and safety



We are always seeking new ideas to improve the safety of our workforce. There will also be a major focus on the health of the workforce. So feasible ideas that increase the safety of operations and consider the wellbeing of individuals will be highly considered by both the contractors and HS2.

Calm sites

We are looking to reduce the complexity on our work sites and are therefore looking for solutions to reducing the amount of activity on site (labour, plant etc). We are therefore looking for solutions that reduce site activity through digitisation, technology, off-site construction, use of standardised products etc.



Digital delivery



Our aspiration is to automate as much process as possible and reduce (if not eliminate) paper on our sites. We will be utilising a range of digital platforms to achieve this and we would like to consider ways in which our supply chain can interface and even integrate to reduce process and admin burden on them. Improving the overall quality of the delivered project.

Open to challenge

We would encourage all our supply chain to challenge our tender specifications where possible with opportunities to deliver a more innovative solution. We recognise the specialist expertise in our supply chain and we would like to know if there is anything we ask of you that prevents us from being able to best leverage that knowledge.



Approach to innovation

- Demonstrate your innovation experience
- Actively participate in the innovation process
- Be open and willing to operate in new ways
- Seek support when necessary
- Work collaboratively
- Deliver excellence



HS2

Innovation

Thank you, any questions?