



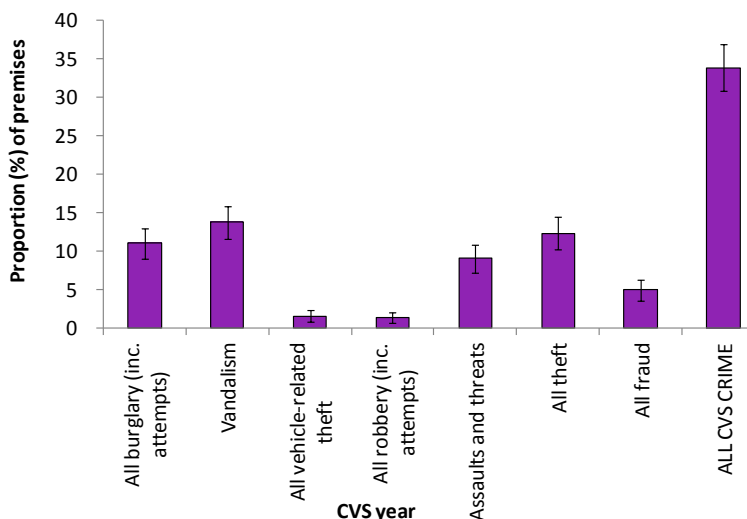
2017 Commercial Victimisation Survey

Arts, entertainment and recreation sector

Key findings:

- **Just over a third (34%) of businesses in this sector experienced crime in 2017**, a statistically significant decrease from 2013 (45%).
- **The most common crime type experienced by this sector in 2017 was assaults and threats.** There were 44,000 incidents of assaults and threats in this sector in 2017, which is in line with the number estimated in 2013 (also 44,000 incidents).
- Although assaults and threats was the most common crime type against this sector, only 9% of premises had experienced this crime type, suggesting a **high repeat victimisation rate for assaults and threats** (10 per premises).
- **Larger-sized businesses in this sector experienced a higher crime rate compared with medium and smaller-sized businesses.** The assaults and threats incidence rate against larger-sized businesses (50+ employees) in this sector was around 7 times higher than that against medium-sized businesses (10-49 employees) and around 16 times higher than smaller sized businesses (1-9 employees).
- **There were 5,000 incidents of online crime against this sector**, a non-significant fall compared with 12,000 incidents in 2013.

Proportion of Arts, entertainment and recreation premises that experienced crime in the last 12 months, by crime type, with 95% confidence intervals, 2017 CVS



- **A small proportion of businesses in this sector experienced at least one type of online crime** in 2017 (11%), a significant reduction in prevalence of online crime compared with 2013 (16%).
- **In line with other sectors, computer viruses were the most commonly experienced online crime**, accounting for 46% of all incidents of online crime against this sector.

| Crime type | Number of crimes (000s) | Number of crimes per 1,000 premises | Number of victims (000s of premises) | Proportion of premises that experienced a crime | Average number of crimes experienced by each victim |
|------------------------------|-------------------------|-------------------------------------|--------------------------------------|---|---|
| All burglary (inc. attempts) | 13 | 269 ↓ | 5 | 11* ↓ | 2* ↓ |
| Vandalism | 30 | 622* ↓ | 7 | 14* ↓ | 5 ↓ |
| All vehicle-related theft | 1 | 22 ↑ | 1 | 2 ↑ | - |
| All robbery (inc. attempts) | 2 | 37 ↑ | 1 | 1 ↑ | - |
| Assaults and threats | 44 | 907 ↓ | 4 | 9* ↓ | 10 ↑ |
| All theft | 27 | 564 ↓ | 6 | 12* ↓ | 5 ↓ |
| All fraud | 16 | 334 ↓ | 2 | 5 ↓ | 7 ↓ |
| ALL CVS CRIME | 134 | 2755* ↓ | 16 | 34* ↓ | 8 ↓ |

Estimates are based on CVS responses from 964 premises.

Table notes: An upward arrow (↑) indicates an increase compared with 2013, a downward arrow (↓) indicates a decrease compared with 2013. Statistically significant changes are denoted with an asterisk (*). A hyphen (-) indicates that a figure is not shown because its unweighted base is fewer than 50 respondents.