

HS2 PHASE 1 NORTH ENABLING WORKS CONTRACT (EWC)

HERITAGE & ARCHAEOLOGY

PRIORITY ARCHAEOLOGICAL SITES

COMPLETED SITE WORKS

Site Name	Works
Geophysical Survey	Burton Green Coleshill Manor Thorpe Rough
Trial Trenching	Dalehouse Lane Drayton Lane Finham Brook Handsacre M6 Junction 4 Middleton
Geoarchaeological Investigations	Park Hall
Archaeological Recording	Water Orton
Historic Landscape & Setting Recording	Park Street Burial Ground

- ❖ All priority site works complete
- ❖ Key archaeology identified:

Prehistoric landscape:

Handsacre

Isolated post-medieval remains from:

Finham Brook
Middleton
M6 Junction 4

PRIORITY ARCHAEOLOGICAL SITES

HANDSACRE – PREHISTORIC LANDSCAPE

Evidence of a prehistoric landscape comprised:

- ❖ Double ring gully - possible roundhouse

Internal diameter of 10m

Contained 22 sherds of Iron Age pottery (from a singular vessel)

- ❖ 57 pits in 2 alignments (NE-SW)

1.5–2m wide, 0.3-0.8m deep, c.1m apart

2 flint flakes and possible third flake

Possible Late Neolithic to Early Bronze Age date



PRIORITY ARCHAEOLOGICAL SITES

COMPLETED SITE WORKS – NO ARCHAEOLOGICAL FEATURES DISCOVERED

No archaeological features were recorded during the following trial trenching works:

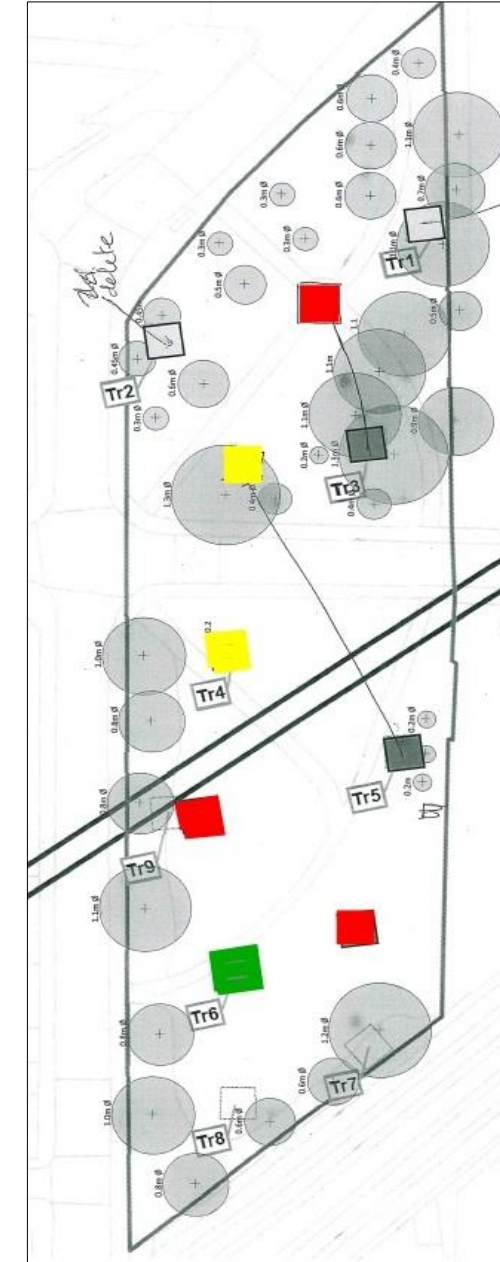
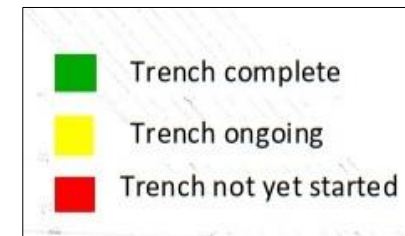
- ❖ Coleshill Manor geophysical survey
- ❖ Dalehouse Lane, Kenilworth
- ❖ Thorpe Rough geophysical survey



PARK STREET BURIAL GROUND

EVALUATION

- ❖ Evaluation underway
- ❖ Works will inform the excavation starting 2018 (WP 14)
- ❖ 2 trenches currently open, 6 planned
- ❖ 5m x 5m working area & 3m x 3m focussed area within cofferdam



PARK STREET BURIAL GROUND

EVALUATION PROCESS

- ❖ 3 excavation methodologies to be employed

Traditional – full skeletal processing and recording on/off-site

Modified Traditional – reduced skeletal recording *in situ*, full osteological recording off-site

Schematic – on-site specialist assessment *in situ*



PARK STREET BURIAL GROUND

EVALUATION PROGRESS TO DATE



❖ Burial Information

Count – 13 articulated skeletons removed

8 adults & 5 juveniles (of which 3 are infants)

Density – initial results from 2 trenches (Tr. 4 & 6) is 0.72/m², although high levels of variation already present

Depth – highest grave cut at c. 1.1m BGL (Trench 6)

lowest grave cut at c. 3.9m BGL (Trench 6)

❖ Pre-cemetery archaeology identified

Potential medieval ditches in Trench 4

Two large, undated pits in Trench 3

PARK STREET BURIAL GROUND

EVALUATION PROGRESS



❖ Geology

Sand across site; dry with no apparent layer of cemetery soil (only made ground relating to park landscaping)

❖ Preservation

Mixed across site; good in most southern trench (Tr. 6), but more degraded in the northern trench (Tr. 4)

Currently little evidence of surviving coffin wood or furniture

WP 29 ARCHAEOLOGY

UPCOMING SITE WORKS

Site Name	Works
Geophysical Survey	Ashow Road Areas 1 – 9 extended geophysical surveys
Trial Trenching	4 Ecology Priority Sites: Ashow Road Thorpe Rough Hints Cutting Coleshill Manor
Geoarchaeological Investigations	Areas 1 – 3 extended geoarchaeological investigations



- ❖ 4 trial trenching schemes to commence early 2018
- ❖ Programme of Geophysical Surveys and Geoarchaeological Investigation works to commence early 2018
- ❖ Investigation of Park Street – Spring 2018

HISTORIC ENVIRONMENT WORKS

DETAILED DESK-BASED ASSESSMENTS

DETAILED DESK-BASED ASSESSMENTS

LiDAR Re-assessment

- Review of the LiDAR data collection and historic environment assessment analysis carried out for 2013 ES
- Suggested potential for the further identification of archaeological features in the micro-topography in line with HERDS specific objectives
- Will inform trial trenching

Historic Settlement DDBA

- Majority of the route crosses a rural landscape and avoids the known primary historic settlement centres
- A number of secondary settlements closer to the route, and possibly areas of deserted medieval settlement

Birmingham Outskirts: Railway Infrastructure & Associated Industry

- To consider the significance of the railway as a major contributor to the growth of the city from the mid 19th century
- A broad landscape study and will provide overall context for the individual elements within it
- Potential for community engagement in providing research into the studies

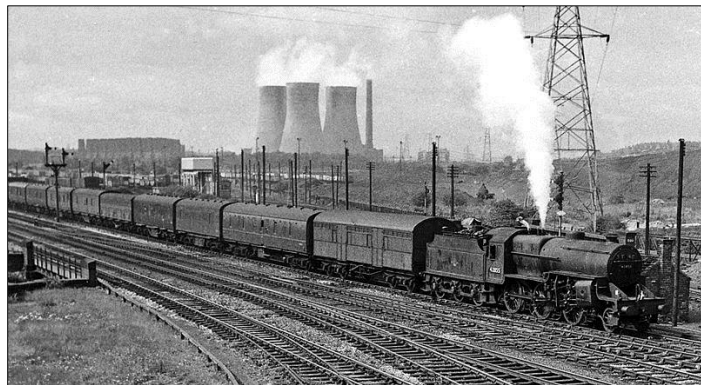
Possible Civil War Battlefield DDBA

- A possible mid 17th century Civil War battlefield site is suggested by chance finds noted on the HER
- May lead to a programme of metal detecting, which could be used as a community engagement project
- A specialist civil war researcher to provide input

HISTORIC ENVIRONMENT WORKS

HISTORIC BUILDING APPRAISAL

HISTORIC BUILDING APPRAISAL

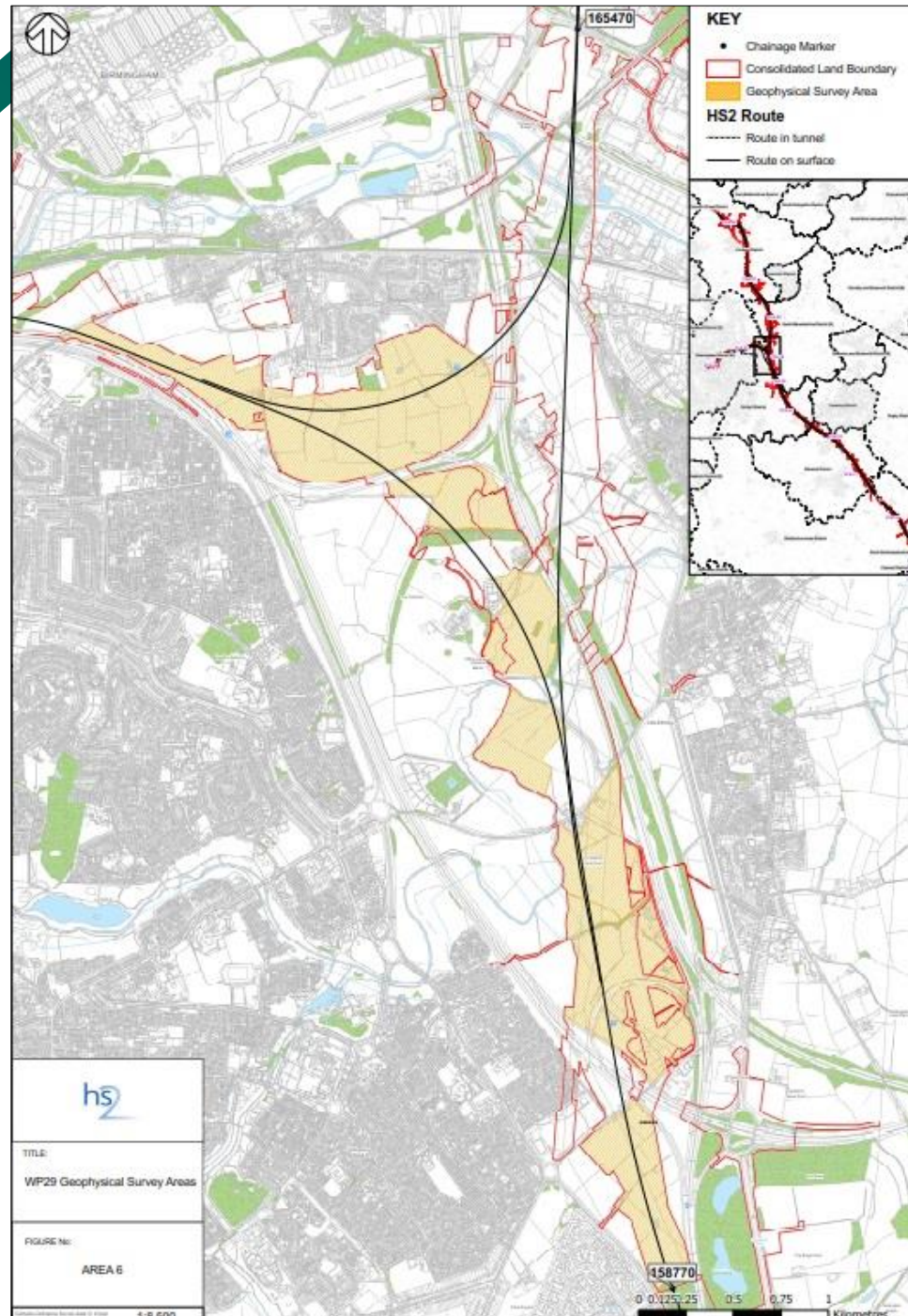


- ❖ Currently driven by WP 35 and WP 11
(pre-demolition surveys & demolition)
- ❖ Initial works to be completed during 2018
- ❖ Work divided into designated and non-designated
- ❖ 4 Listed Buildings considered for demolition (following Heritage Agreements):
 - Fox & Grapes Public House, Birmingham
 - Buck's Head Farmhouse, Lichfield
 - Coleshill Hall Farm, North Warwickshire
 - Jerrings Hall, Solihull
- ❖ Recording setting for assets affected by the scheme (PP's from early 2018 onwards)

HISTORIC ENVIRONMENT WORKS

GEOPHYSICAL SURVEY

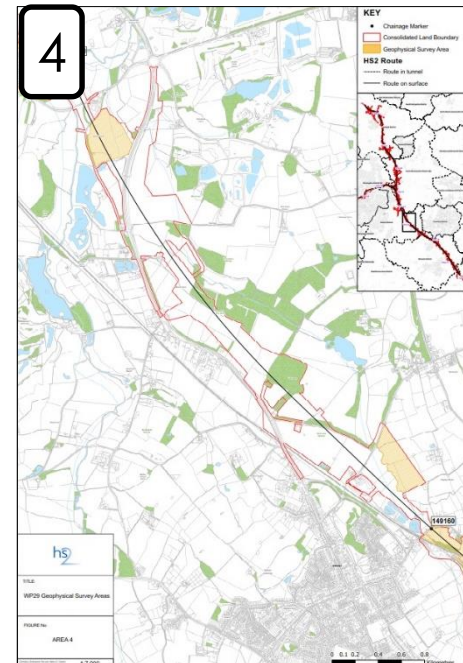
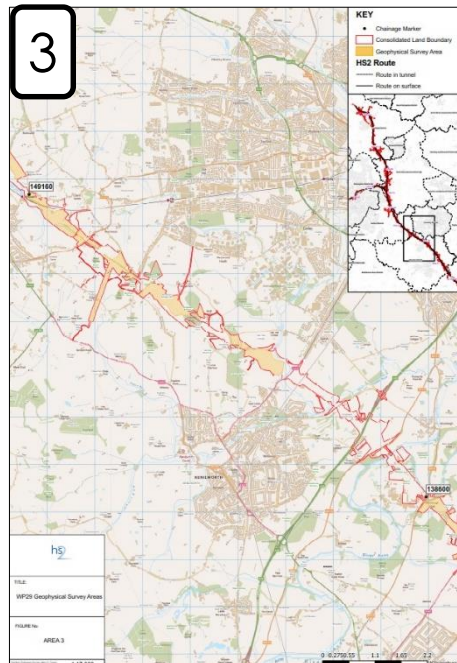
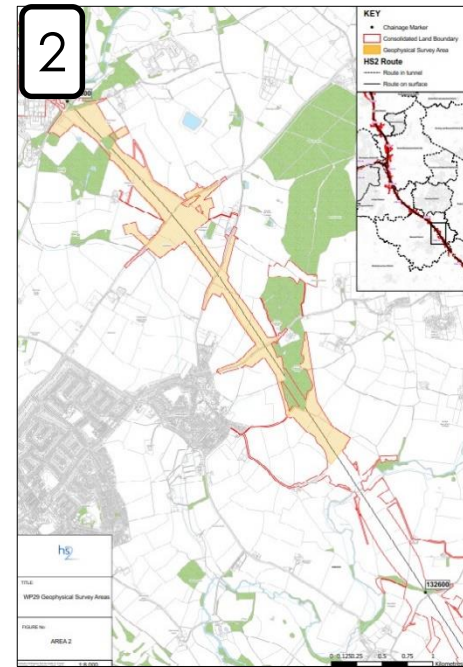
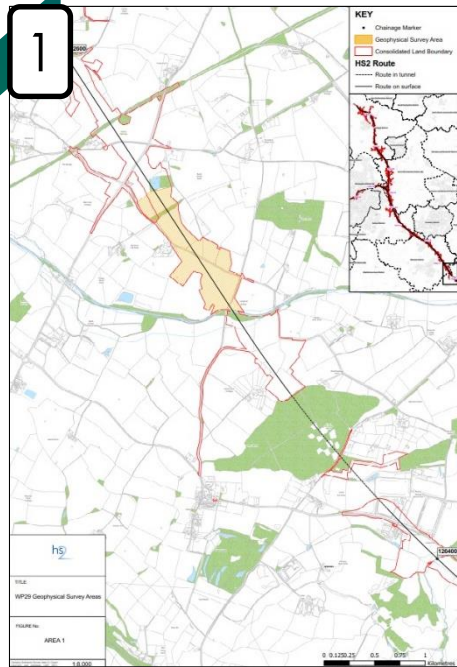
GEOPHYSICAL SURVEYS



Area 6 – containing Water Orton & Coleshill Park

- ❖ 9 Project Plans completed and submitted for review
- ❖ Blanket coverage discarding areas of low potential
- ❖ c. 1000 ha to be surveyed
- ❖ 3 LS-WSI's ready for review
 - Areas 1-3 (c. 200 ha)
 - Areas 4-6 (c. 250 ha)
 - Areas 7-9 (c. 550 ha)
- ❖ Time efficient due to cumulative access arrangements
- ❖ Works to begin early 2018

GEOPHYSICAL SURVEYS



❖ 9 large geophysical survey areas

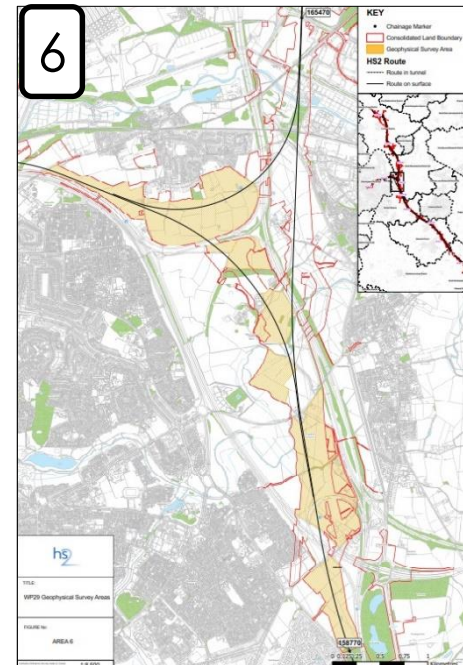
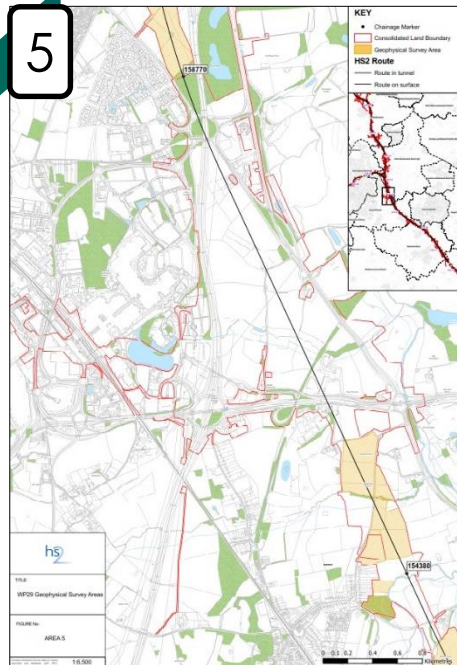
1) River Itchen Viaduct to Ash Beds Embankment

2) Ash Beds Embankment to Stoneleigh Park Retaining Wall

3) Stoneleigh Park Retaining Wall to Balsall Common

4) Balsall Common to Diddington Cutting

GEOPHYSICAL SURVEYS



❖ 9 large geophysical survey areas

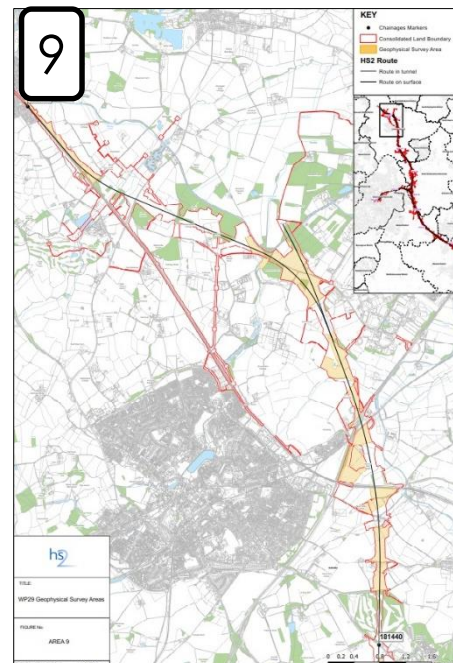
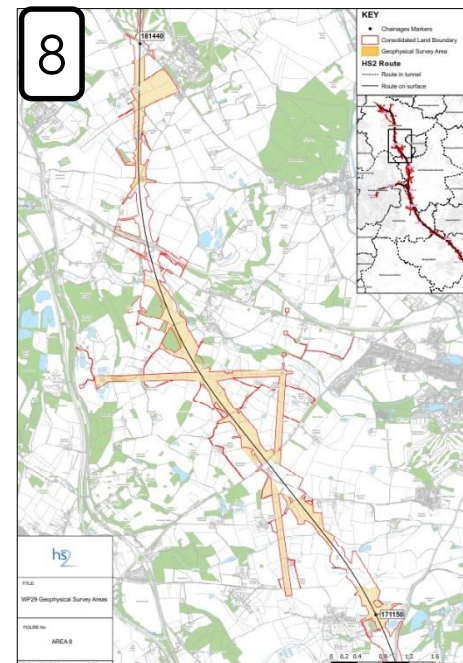
5) Diddington Cutting to Pool Wood

6) Pool Wood to Faraday Avenue Embankment

7) Faraday Avenue Embankment to Middleton Pool Cutting

8) Middleton Pool Cutting to Swinfin Cutting

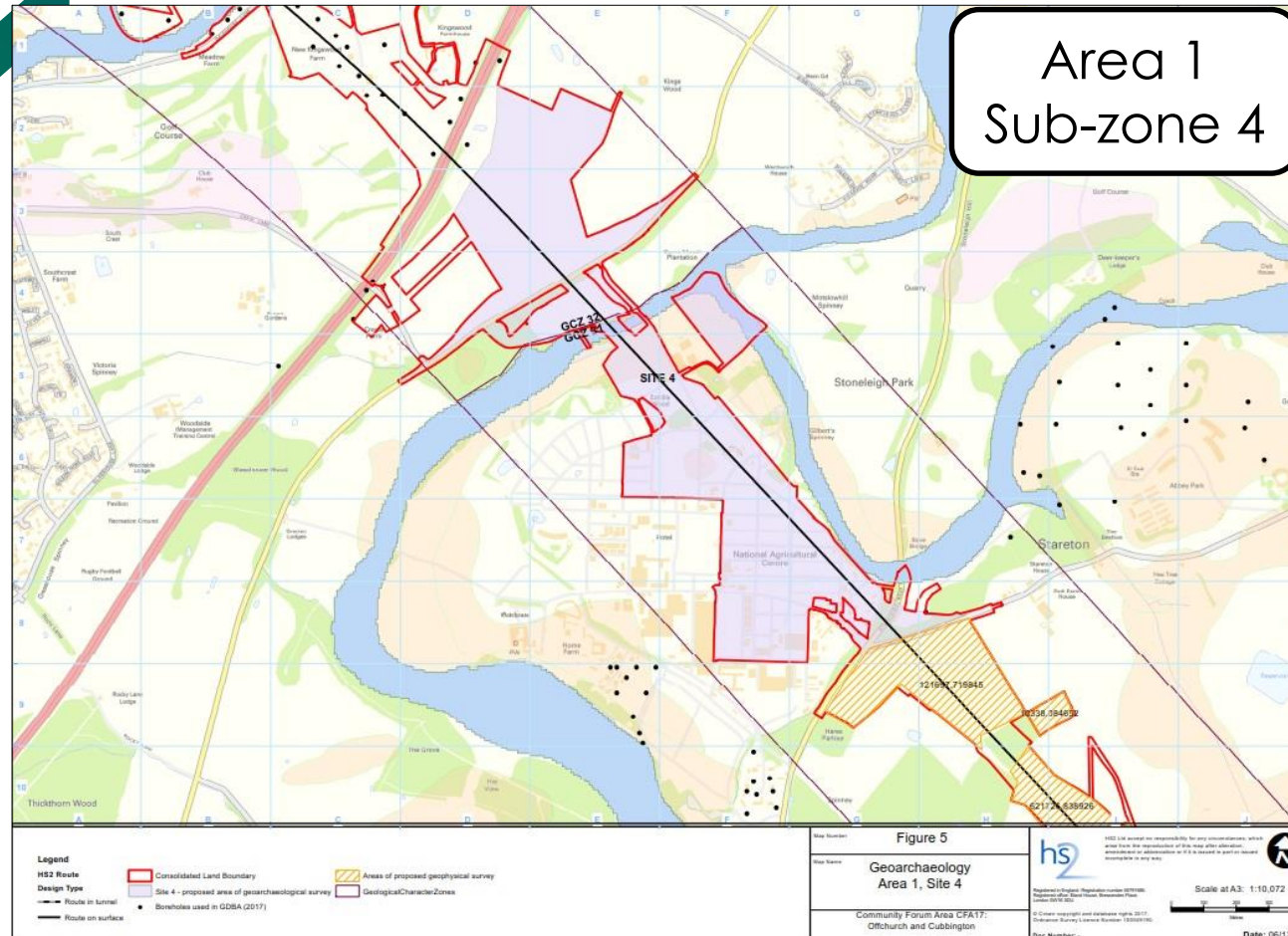
9) Swinfin Cutting to Handsacre Retaining Wall



HISTORIC ENVIRONMENT WORKS

GEOARCHAEOLOGICAL INVESTIGATIONS

GEOARCHAEOLOGICAL INVESTIGATION



- ❖ Creation of a deposit risk map across Area North
- ❖ Specialist advice

❖ All Project Plans focus on:

Pleistocene & Holocene deposits with geochaeological potential (e.g. PP1 and PP2);

Or

Areas where no information on superficial geology is present (e.g. PP3);

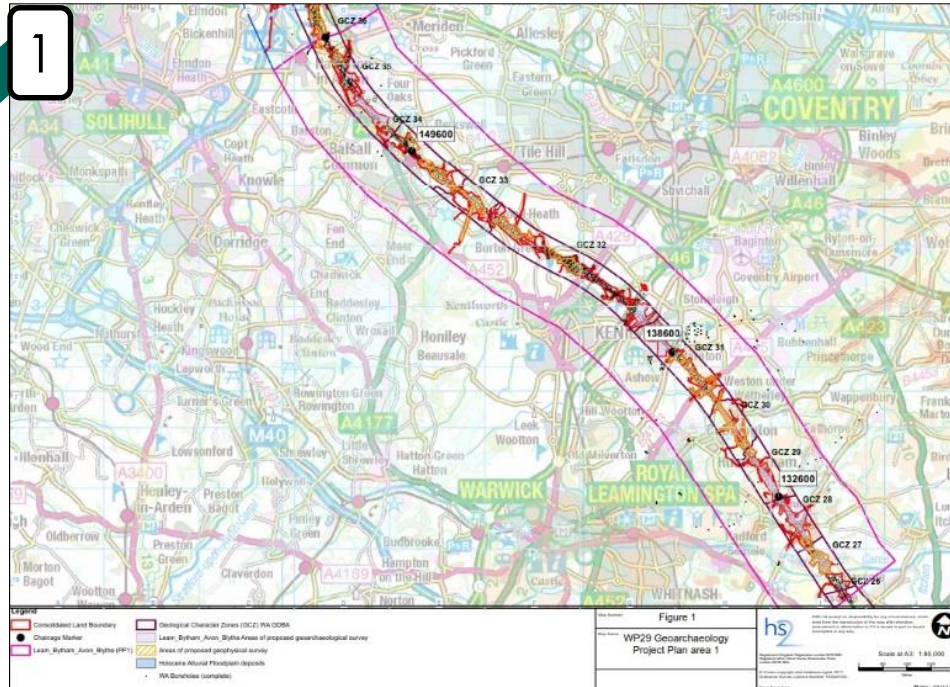
Or

Areas where geophysical survey already undertaken;

Or

Areas of poor data coverage

GEOARCHAEOLOGICAL INVESTIGATION



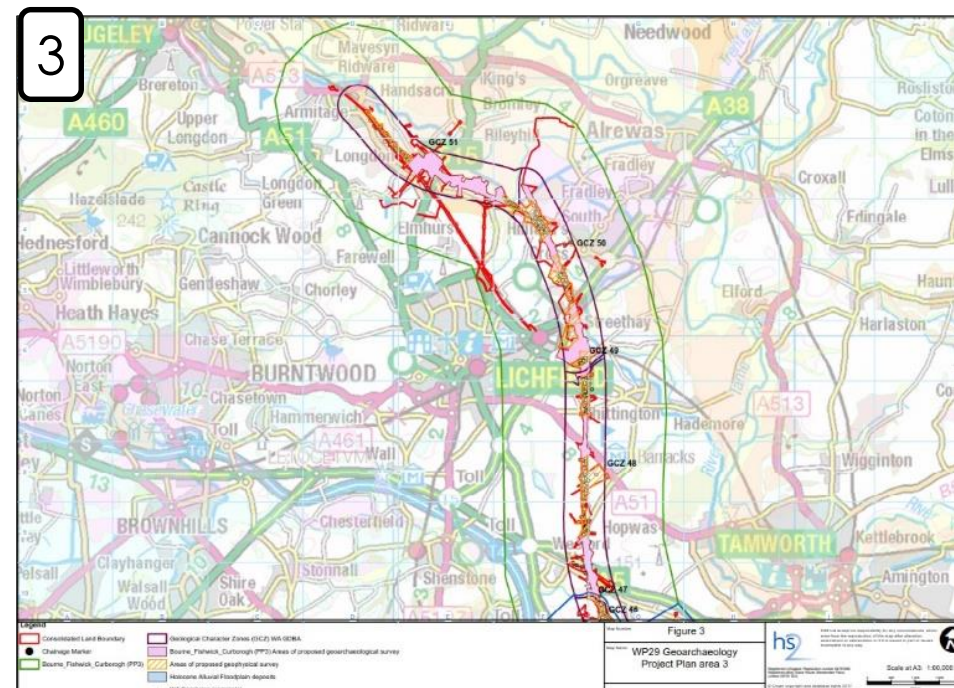
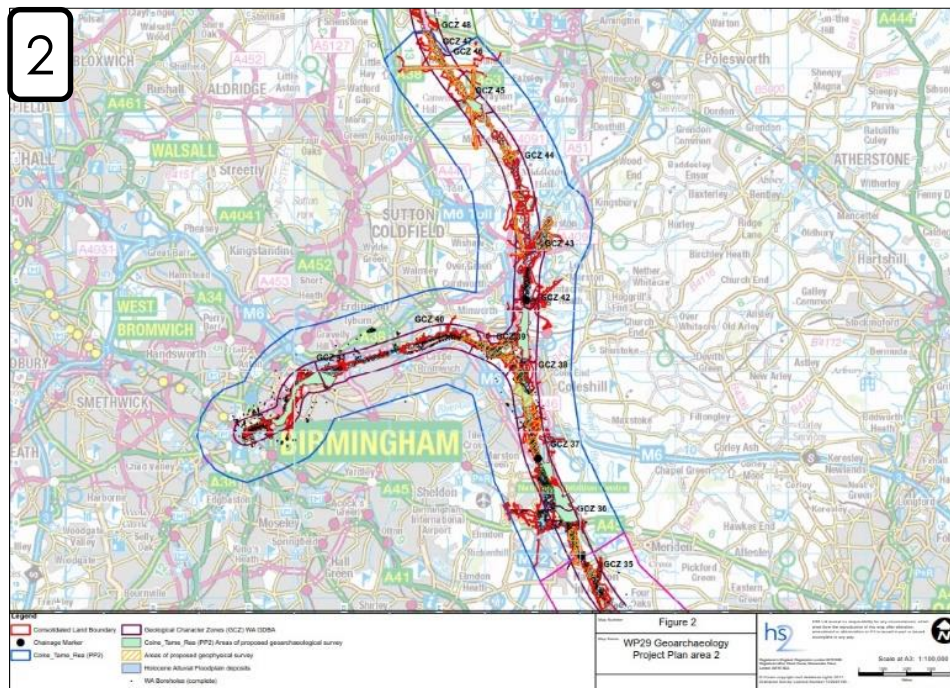
❖ Deposit-led approach across Area North

❖ 3 large areas (with smaller sub-zones):

PP1 : Leam-Bytham-Avon-Blythe

PP2 : Colne-Tame-Rea

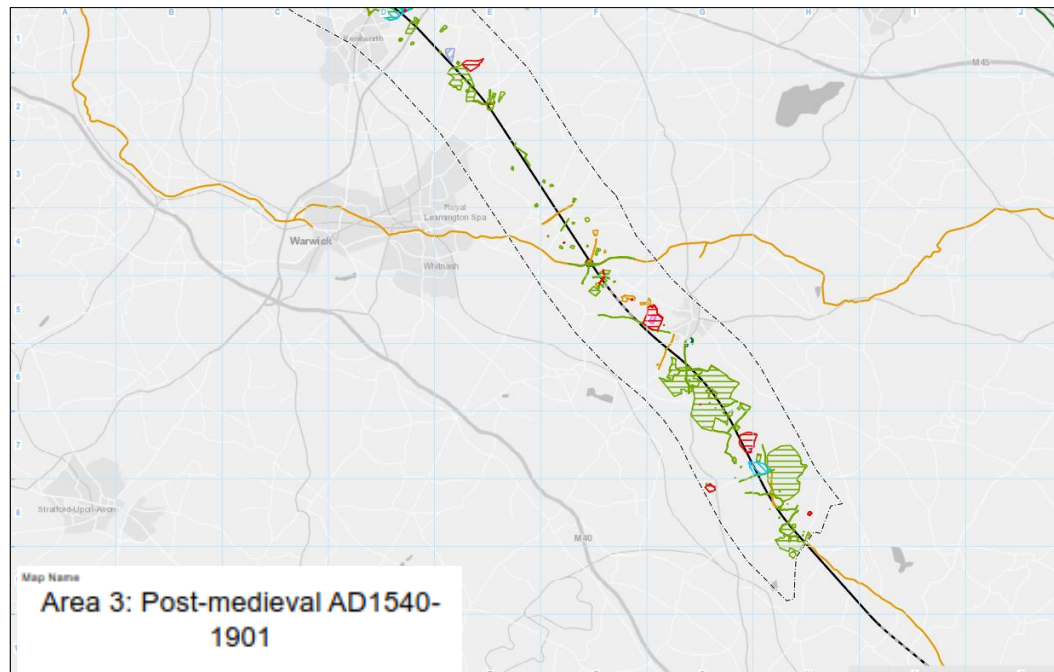
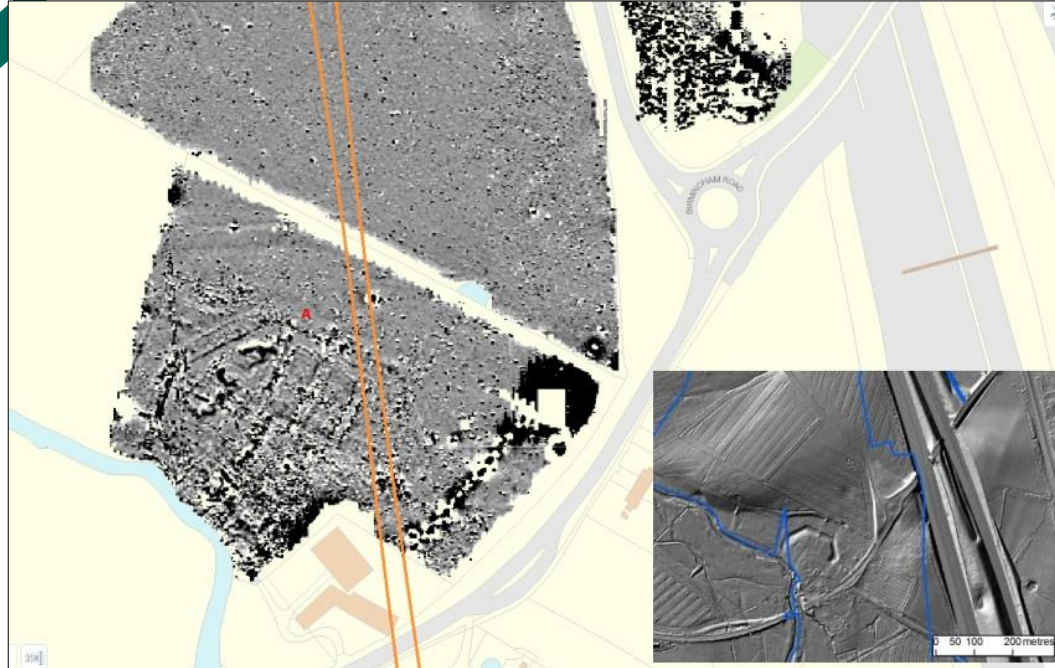
PP3 : Bourne-Fisherwick-Curborough



HISTORIC ENVIRONMENT WORKS

TRIAL TRENCHING STRATEGY

TRIAL TRENCHING



- ❖ Priority trenching commencing early 2018
- ❖ Estimated range of 5,000 - 10,000 trenches to be excavated
- ❖ In line with HERDS special objectives
- ❖ Focussed on:
 - Areas with previous geophysical survey data available
 - Areas informed by Heritage Asset Density Mapping
 - Areas requiring non-contestable (utilities) works

COMMUNITY ENGAGEMENT

COMMUNITY ENGAGEMENT



- ❖ Collaborating with the Birmingham Museums Trust. A stakeholder workshop for early 2018
- ❖ Using knowledge of archaeology and heritage groups with community engagement experience
- ❖ Cross-sectorial community collaboration with engineers (LM), ecologists and landscape designers
- ❖ Projects currently listed include:

Potential Legacy Project (Park Street)

School & College Visits (e.g. Time Truck, STEM workshops)

Lectures & Workshops (local businesses/interest groups)

Gravestone Recording (photogrammetry, documentation)

Non-graduate Training

Contribution to landscape DDBAs (local history/interest groups)

Metal detecting to support Civil War Battlefield DDBA