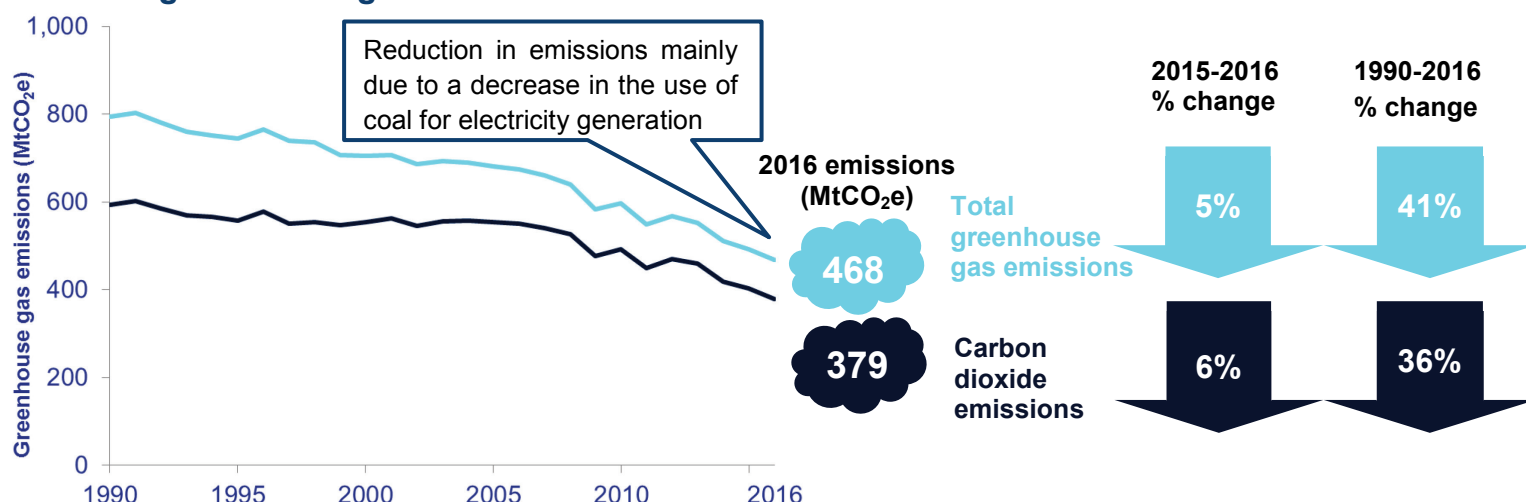


2016 UK greenhouse gas emissions are estimated to decrease from 2015



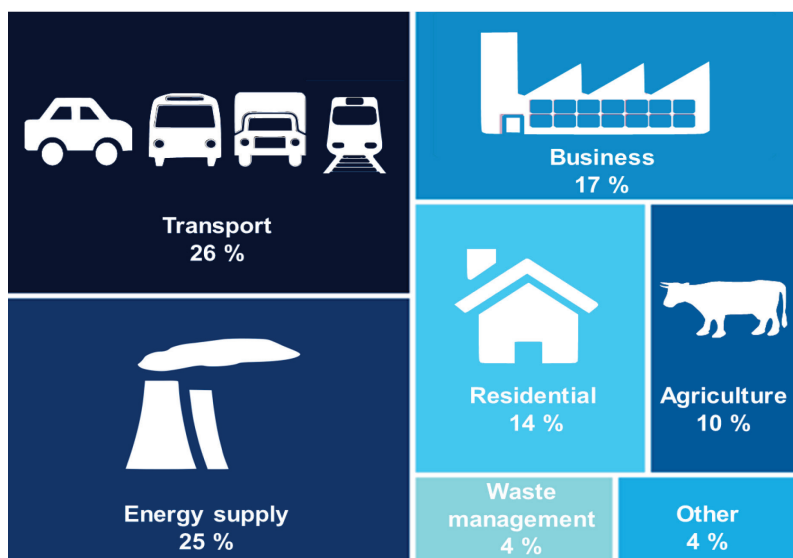
The UK is on track to meet the Second Carbon Budget

2nd Carbon Budget
(2013-17) level

2,782
MtCO₂e

The second Carbon Budget figures will not be finalised until 2019.

Transport becomes the largest emitting sector of UK 2016 greenhouse gas emissions



Other includes Public and Industrial Process sectors (the Land Use, Land Use Change and Forestry (LULUCF) sector is excluded from the sector statistics above as it acted as a net sink of emissions). Please note the percentages above do not sum to 100% due to rounding.

Energy supply and business sectors delivered the largest reductions in emissions from 2015 to 2016

	2015-2016 % change	1990-2016 % change
Energy supply	17%	57%
Waste management	5%	70%
Business	5%	29%
Other	10%	75%
Agriculture	0%	16%
LULUCF	4%	590%
Transport	2%	2%
Residential	4%	13%

LULUCF has a large decrease from 1990-2016 as emissions have gone from being a small net sink in 1990 (-2.1 MtCO₂e) to a much larger net sink of emissions in 2016 (-14.6 MtCO₂e).