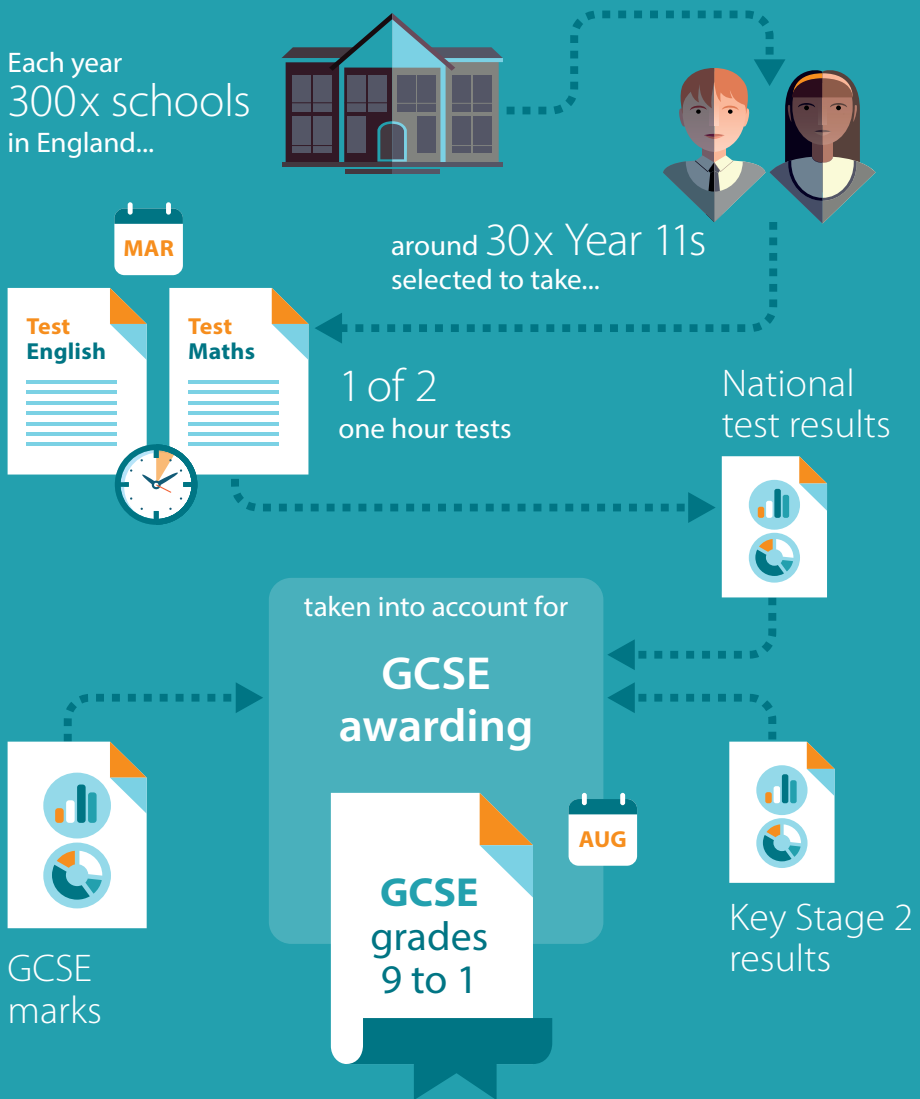


# National Reference Test



## **The National Reference Test was introduced in 2017. Information from the tests will in time support the awarding of GCSEs.**

---

**Annual tests in maths and English** will be taken by a sample of year 11 students in February and March each year. The test questions will remain largely the same from year to year. We will not be able to provide individual feedback to students or schools and the results won't be used for accountability purposes.

---

Each year, around **300 schools in England** will take part in the tests. Legislation requires that these schools take part. At each school, around 30 students will take an English paper and another 30 students will take a maths paper. The tests will take an hour to complete and will be administered and invigilated by the National Foundation for Educational Research.



**Evidence for  
Excellence in  
Education**

---

We will, in time, **publish national test results** towards the end of August each year. Over time, the tests have the potential to provide a valuable additional source of information that may be **taken into account when GCSEs are awarded.**