



GOVERNMENT OFFICE NETWORK

Joe Montgomery

Director General (SCS PB3): £150,000 – 154,999
Regions and Communities (DCLG)

Brian Hackland (GO004)

Director (SCS PB2): £100,000 – 104,999
Government Office Network Centre and Services (GO-NCS)

Trudi Elliott (GO009)

Director (SCS PB2): £125,000 – 129,999
Government Office West Midlands (GOWM)

Colin Byrne (GO007)

Director (SCS PB2): £100,000 – 104,999
Government Office South East (GOSE)

Stephen Hillier (GO002)

Director (SCS PB2): £95,000 – 99,999
Government Office East Midlands (GOEM)

Jon Bright (GO008)

Director (SCS PB2): £95,000 – 99,999
Government Office South West (GOSW)

Paul Pugh (GO001)

Director (SCS PB2): £95,000 – 99,999
Government Office East (GO-East)

Jonathan Blackie (GO005)

Director (SCS PB2): £110,000 – 114,999
Government Office North East (GONE)

Vacant (GO003)

Director (SCS PB2)
Government Office London (GOL)

Felicity Everiss (GO010)

Director (SCS PB2): £105,000 – 109,999
Government Office Yorkshire and The Humber (GOYH)

Liz Meek (GO006)

Director (SCS PB2): £125,000 – 129,999
Government Office North West (GONW)

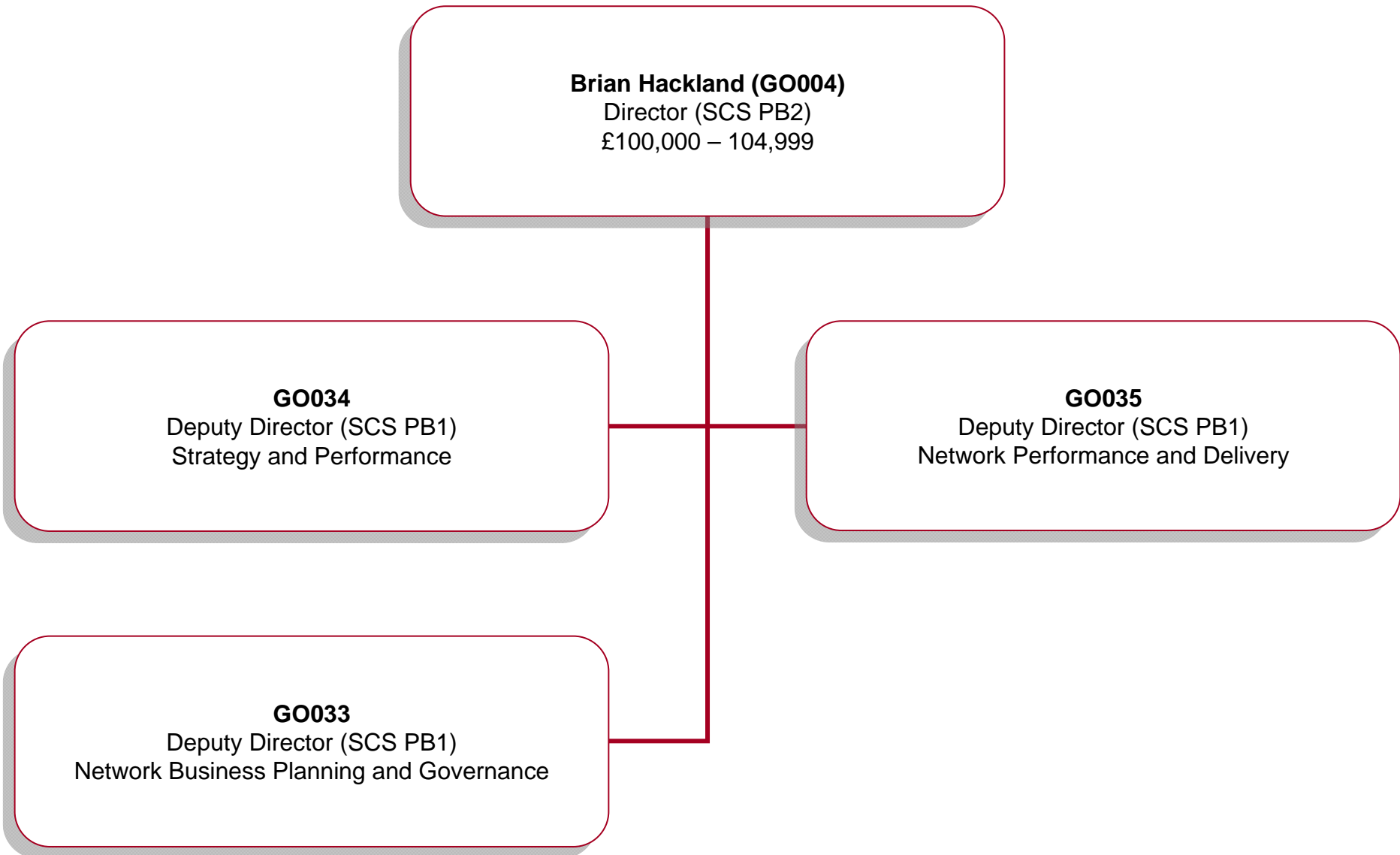
Government Office Network Centre and Services (GO-NCS)

Brian Hackland (GO004)
Director (SCS PB2)
£100,000 – 104,999

GO034
Deputy Director (SCS PB1)
Strategy and Performance

GO035
Deputy Director (SCS PB1)
Network Performance and Delivery

GO033
Deputy Director (SCS PB1)
Network Business Planning and Governance



Government Office Network Centre and Services (GO-NCS)

Reporting Staff	AO	EO	HEO	SEO	G7	G6	Grand Total
GO004		1		1	1	1	4
GO034	1	3	4	2	3	1	14
GO033					1	2	3
Grand Total	1	4	4	3	5	4	21

NOTE

All information taken from GO HR database as at end of June 2010.

Staff numbers include permanent GO staff, fixed-term staff, and staff on loan / secondment in.

Staff numbers exclude staff on loan / secondment out, career breaks or leave with pay.

UKTI staff are listed as reporting under the relevant director.

Government Office East (GO-East)

Paul Pugh (GO001)
Director (SCS PB2)
£95,000 – 99,999

GO014
Deputy Director (SCS PB1)
Development and Infrastructure

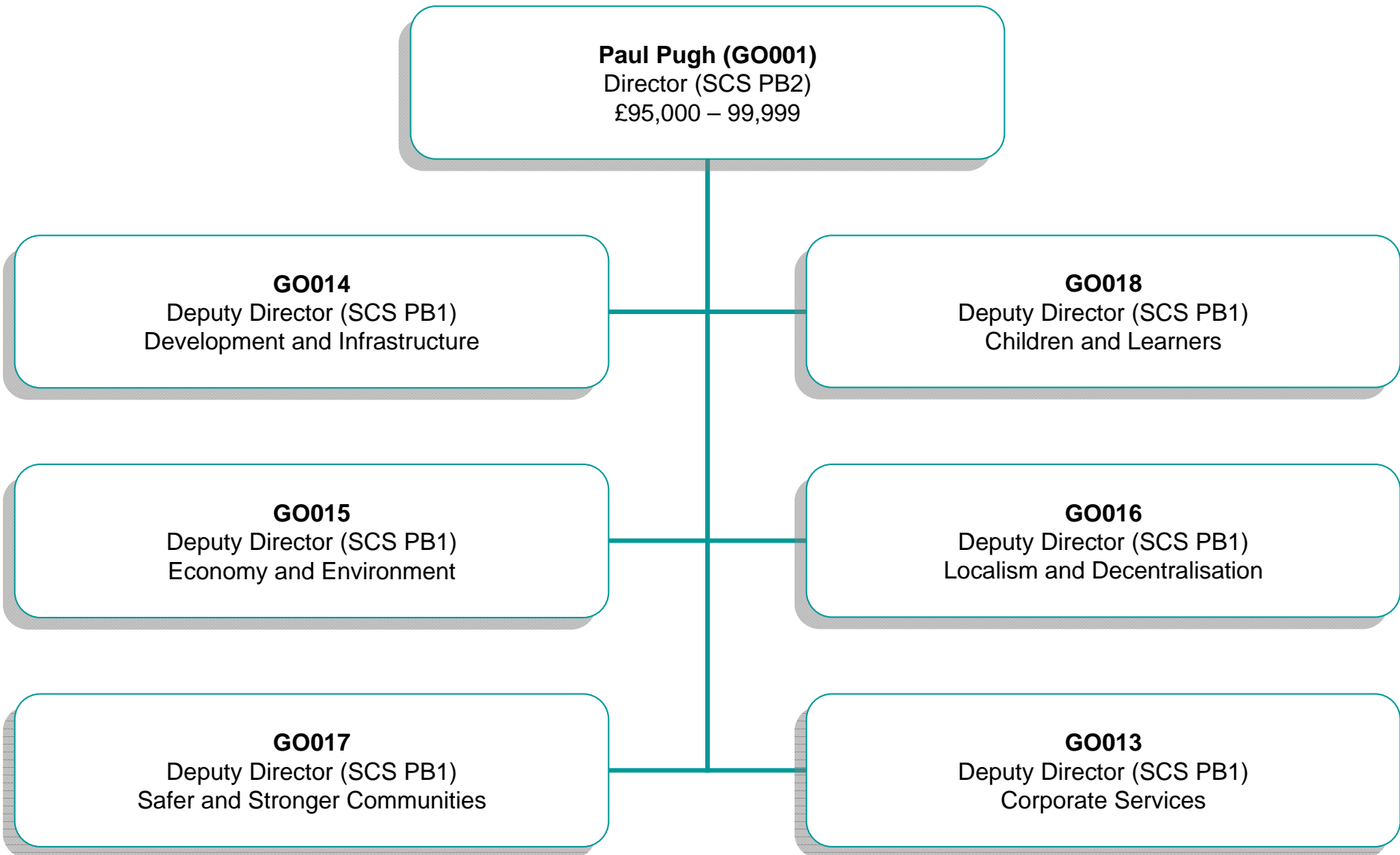
GO018
Deputy Director (SCS PB1)
Children and Learners

GO015
Deputy Director (SCS PB1)
Economy and Environment

GO016
Deputy Director (SCS PB1)
Localism and Decentralisation

GO017
Deputy Director (SCS PB1)
Safer and Stronger Communities

GO013
Deputy Director (SCS PB1)
Corporate Services



Government Office East (GO-East)

Reporting Staff	AO	EO	HEO	SEO	G7	G6	Grand Total
GO016	1.3	2	1	5.7	6.3		16.3
GO013	2	9	12.6	8	8.6	2	42.2
GO018		3	7.9	5.3	5	0.9	22.1
GO015	1	1	3.8	9.4	5.9	1	22.1
GO014	1	4.8	10.3	6.6	6.9	2	31.6
GO017		2	1	14.8	4.8	1	23.6
Grand Total	5.3	21.8	36.6	49.8	37.5	6.9	157.9

NOTE

All information taken from GO HR database as at end of June 2010.

Staff numbers include permanent GO staff, fixed-term staff, and staff on loan / secondment in.

Staff numbers exclude staff on loan / secondment out, career breaks or leave with pay.

UKTI staff do not formally report to a Deputy Director but are listed as reporting under post GO013.

Government Office East Midlands (GOEM)

Stephen Hillier (GO002)

Director (SCS PB2)

£95,000 – 99,999

GO020

Deputy Director (SCS PB1)
Safer, Stronger Communities

GO023

Deputy Director (SCS PB1)
Children and Learners

GO024

Deputy Director (SCS PB1)
Local Government and Localities

GO022

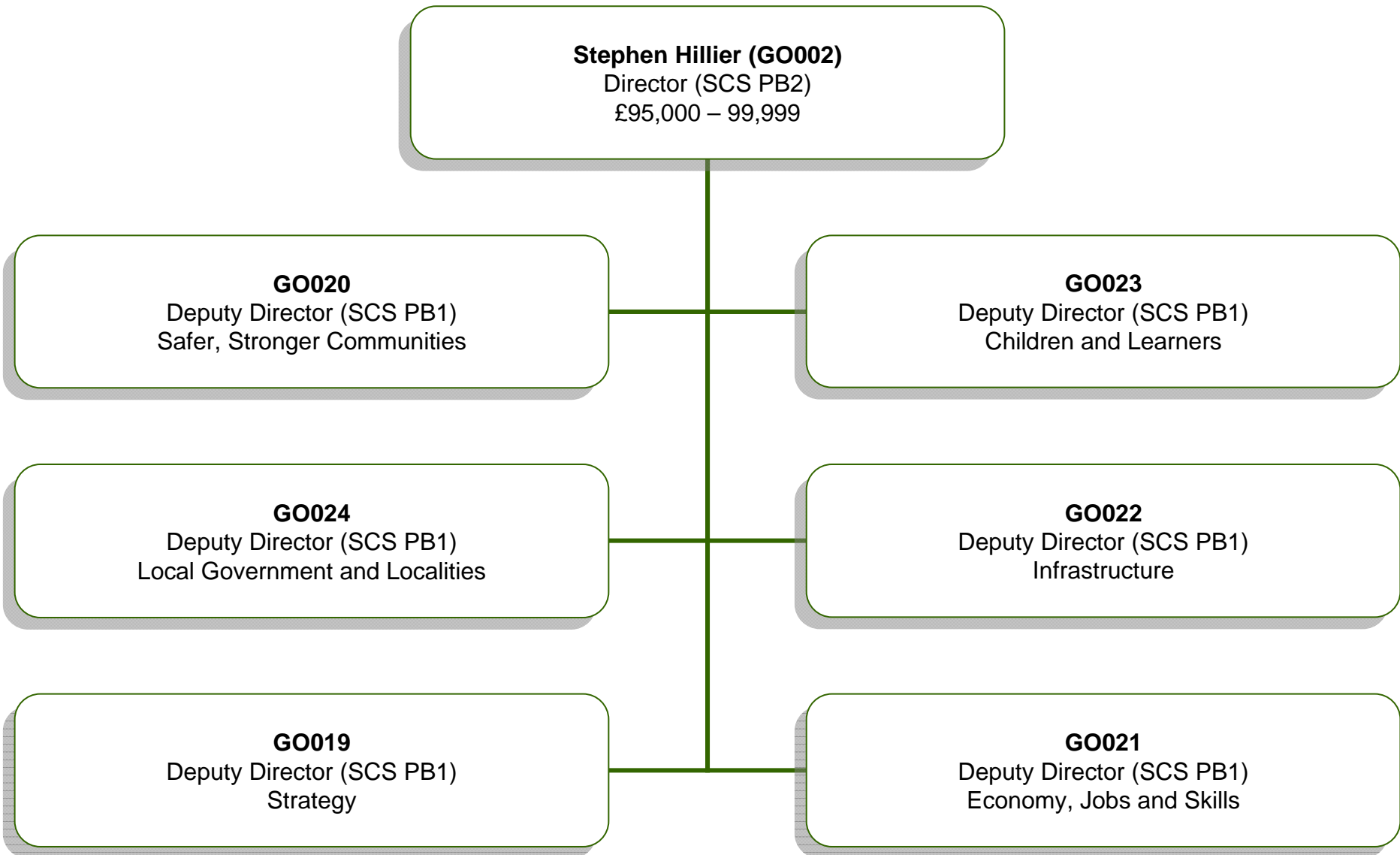
Deputy Director (SCS PB1)
Infrastructure

GO019

Deputy Director (SCS PB1)
Strategy

GO021

Deputy Director (SCS PB1)
Economy, Jobs and Skills



Government Office East Midlands (GOEM)

Reporting Staff	AO	EO	HEO	HEO (D)	SEO	G7	G6	Grand Total
GO023	0.5	4			4	5	1	14.5
GO002	0.5	2	7		2			11.5
GO020	1	1	3		3.8	5	1	14.8
GO019	3.9	6.9	8.6	1	3	4	1	28.4
GO024	2	2	3.8		1	2.8	5	16.6
GO021	2	2	3		1.8	2.8	1	12.6
GO022	2	6	6.4		10.9	5	1.8	32.1
Grand Total	11.9	23.9	31.8	1	26.5	24.6	10.8	130.5

NOTE

All information taken from GO HR database as at end of June 2010.

Staff numbers include permanent GO staff, fixed-term staff, and staff on loan / secondment in.

Staff numbers exclude staff on loan / secondment out, career breaks or leave with pay.

UKTI staff are listed as reporting under the relevant director.

Government Office London (GOL)

Vacant (GO003)
Director (SCS PB2)
NA

GO025
Deputy Director (SCS PB1)
Community Safety

GO027
Deputy Director (SCS PB1)
Thames Gateway

GO028
Deputy Director (SCS PB1)
Planning and Housing

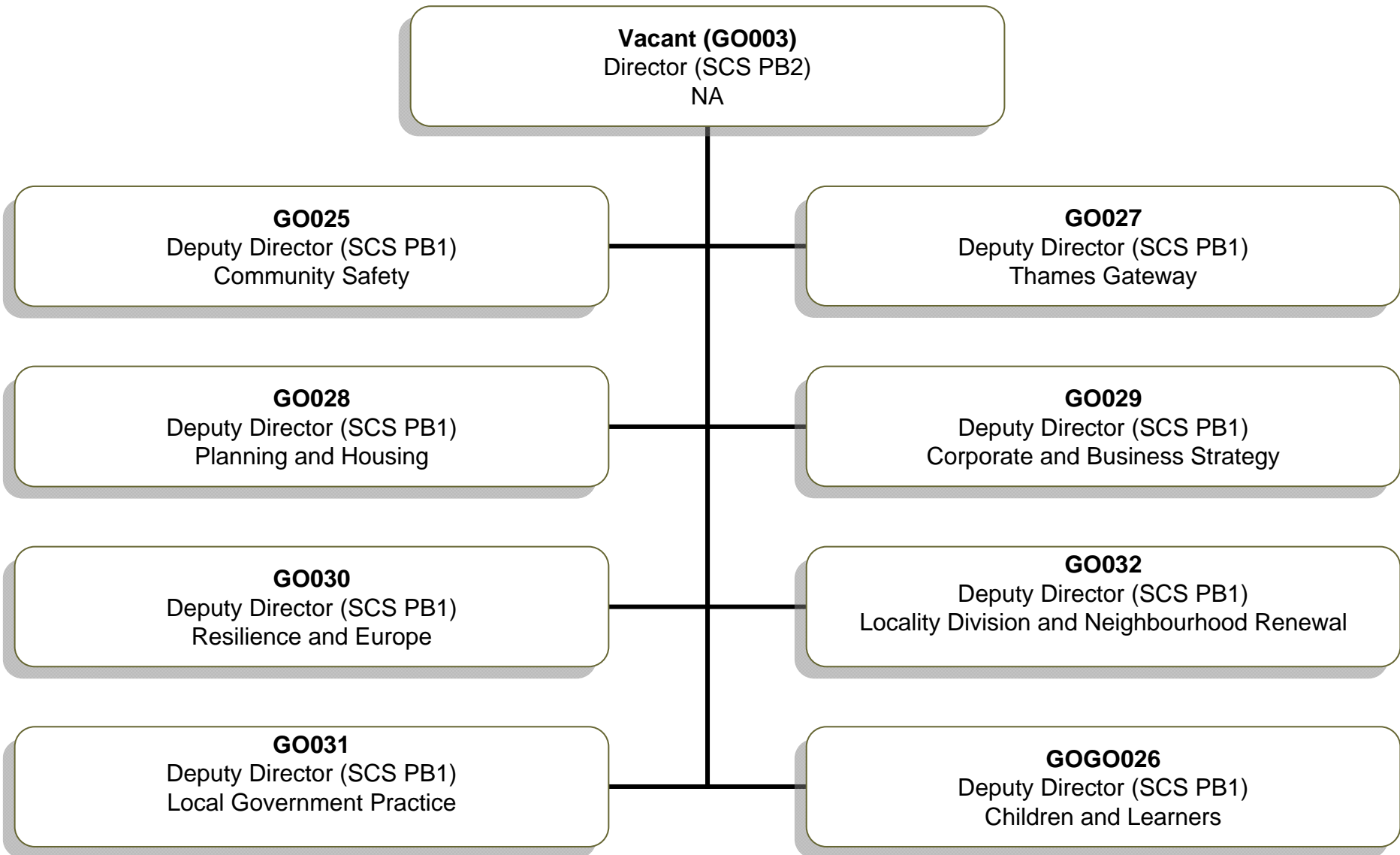
GO029
Deputy Director (SCS PB1)
Corporate and Business Strategy

GO030
Deputy Director (SCS PB1)
Resilience and Europe

GO032
Deputy Director (SCS PB1)
Locality Division and Neighbourhood Renewal

GO031
Deputy Director (SCS PB1)
Local Government Practice

GOGO026
Deputy Director (SCS PB1)
Children and Learners



Government Office London (GOL)

Reporting Staff	AO	EO	HEO	SEO	G7	G6	Grand Total
GO028	2	5	3	8.8	4.8		23.6
GO027		1	2	0.8	3		6.8
GO032	1	2	7	2.7	12	2	26.7
GO029	1.9	3.7	5		9	2.8	22.4
GO025		3	3.8	2	9.9	1	19.7
GO031		3	6	2	2	0.9	13.9
GO030		5	8.8	1	4		18.8
GO026		4	1.6	4.5	4.9	2	17
GO003	3	4	5		1	1	14
Grand Total	7.9	30.7	42.2	21.8	50.6	9.7	162.9

NOTE

All information taken from GO HR database as at end of June 2010.

Staff numbers include permanent GO staff, fixed-term staff, and staff on loan / secondment in.

Staff numbers exclude staff on loan / secondment out, career breaks or leave with pay.

UKTI staff are listed as reporting under the relevant director.

Government Office North East (GONE)

Jonathan Blackie (GO005)
Director (SCS PB2)
£110,000 – 114,999

GO037
Deputy Director (SCS PB1)
Local Government, Partnerships and Place

GO038
Deputy Director (SCS PB1)
Children and Learners

GO039
Deputy Director (SCS PB1)
Environment

GO040
Deputy Director (SCS PB1)
Corporate Services

GO042
Deputy Director (SCS PB1)
Economy and Strategy

GO041
Deputy Director (SCS PB1)
Safer and Stronger Communities and Tees Valley

GO036
Deputy Director (SCS PB1)
Europe

Government Office North East (GONE)

Reporting Staff	AO	EO	HEO	SEO	G7	G6	Grand Total
GO038	3.6	3	5.5	4.8	4	1	21.9
GO005	1	2	4.8	1	1		9.8
GO040	1	8.2	9	2.8	5.5	1	27.5
GO039	11.4	12	6	10.5	6	1	46.9
GO036	1	1	3		2		7
GO037	0.5	2.8	3.1	2	5	2	15.4
GO042	1	3	3	4	5		16
GO041	1.2	0.6	4	5	3	1	14.8
Grand Total	20.7	32.6	38.4	30.1	31.5	6	159.3

NOTE

All information taken from GO HR database as at end of June 2010.

Staff numbers include permanent GO staff, fixed-term staff, and staff on loan / secondment in.

Staff numbers exclude staff on loan / secondment out, career breaks or leave with pay.

UKTI staff are listed as reporting under the relevant director.

Government Office North West (GONW)

Liz Meek (GO006)
Director (SCS PB2)
£125,000 – 129,999

GO011
Deputy to the Director (SCS PB1A)
GONW

GO043
Deputy Director (SCS PB1)
Children and Learners

GO045
Deputy Director (SCS PB1)
Competitiveness and Infrastructure

GO044
Deputy Director (SCS PB1)
Worklessness and Social Exclusion

GO046
Deputy Director (SCS PB1)
Housing, Planning and Transport

GO070
Deputy Director (SCS PB1)
Crime and Community Safety

Government Office North West (GONW)

Reporting Staff	AO	EO	HEO	HEO (D)	SEO	G7	G6	Grand Total
GO043	5	2	3		1.9	6	1	18.9
GO046	11	5.3	8.7		6.8	5		36.8
GO011	3.5	11.8	10	1	10.2	12.4	2	50.9
GO070		2	2		5	5	1	15
GO044		3	4.8		2	8		17.8
GO045	2	2	7.4		2.5	4.9	1	19.8
GO006		3	8.5		1	1		13.5
Grand Total	21.5	29.1	44.4	1	29.4	42.3	5	172.7

NOTE

All information taken from GO HR database as at end of June 2010.

Staff numbers include permanent GO staff, fixed-term staff, and staff on loan / secondment in.

Staff numbers exclude staff on loan / secondment out, career breaks or leave with pay.

UKTI staff are listed as reporting under the relevant director.

Government Office South East (GOSE)

Colin Byrne (GO007)

Director (SCS PB2)

£100,000 – 104,999

GO048

Deputy Director (SCS PB1)
Corporate Services and Resilience

GO051

Deputy Director (SCS PB1)
Transport and Environment and Thames Valley

GO049

Deputy Director (SCS PB1)
Sustainable Communities and Hampshire and The
Isle of Wight

GO050

Deputy Director (SCS PB1)
Safer and Stronger Communities and Kent and
Medway

GO047

Deputy Director (SCS PB1)
Strategy and Business Improvement

GO069

Deputy Director (SCS PB1)
Children and Learners and Surrey and Sussex

Government Office South East (GOSE)

Reporting Staff	AO	EO	HEO	HEO (D)	SEO	G7	G6	Grand Total
GO047	4	6	8.2		6.9	7.7	2	34.8
GO049	1.8	7.8	6.8		6.6	7.3	3	33.3
GO069	3	5	3	1	7.6	7.4	2	29
GO007	1.6	2	4.4		1.7	1		10.7
GO051	2.4	3.8	4.4		5.5	5.9	2.9	24.9
GO050	1	2.8	3.9		10.8	5.5	3	27
GO048	0.6	2.9	4.8			3		11.3
Grand Total	14.4	30.3	35.5	1	39.1	37.8	12.9	171

NOTE

All information taken from GO HR database as at end of June 2010.

Staff numbers include permanent GO staff, fixed-term staff, and staff on loan / secondment in.

Staff numbers exclude staff on loan / secondment out, career breaks or leave with pay.

UKTI staff are listed as reporting under the relevant director.

Government Office South West (GOSW)

Jon Bright (GO008)
Director (SCS PB2)
£95,000 – 99,999

GO055
Deputy Director (SCS PB1)
Children and Learners

GO053
Deputy Director (SCS PB1)
Regeneration and Social Exclusion

GO058
Deputy Director (SCS PB1)
Housing, Planning and Transport

GO054
Deputy Director (SCS PB1)
Corporate Service and Regional Resilience

GO056
Deputy Director (SCS PB1)
Environment, Transport and Climate

GO057
Deputy Director (SCS PB1)
Local Government Practice

GO052
Deputy Director (SCS PB1)
Safer and Stronger Communities

Government Office South West (GOSW)

Reporting Staff	AA	AO	EO	HEO	SEO	G7	G6	Grand Total
GO053	1	5.3	6.1	6.5	7.6	8	1.9	36.4
GO054	0.8	3	6.5	7	2.6	4	1.6	25.5
GO055			1.7	2	4.8	4.7	1	14.2
GO056		1	2	1	7.8	6.2	1	19
GO058		1.9	8.6	8.2	7.9	2.6	3	32.2
GO008		1	3.4	2.5	1	1		8.9
GO052		1	4.5	4.4	5.8	4.7		20.4
GO057			2	1	2	4.6		9.6
Grand Total	1.8	13.2	34.8	32.6	39.5	35.8	8.5	166.2

NOTE

All information taken from GO HR database as at end of June 2010.

Staff numbers include permanent GO staff, fixed-term staff, and staff on loan / secondment in.

Staff numbers exclude staff on loan / secondment out, career breaks or leave with pay.

UKTI staff are listed as reporting under the relevant director.

Government Office West Midlands (GOWM)

Trudi Elliott (GO009)
Director (SCS PB2)
£125,000 – 129,999

GO012
Deputy to the Director (SCS PB1A)
GOWM

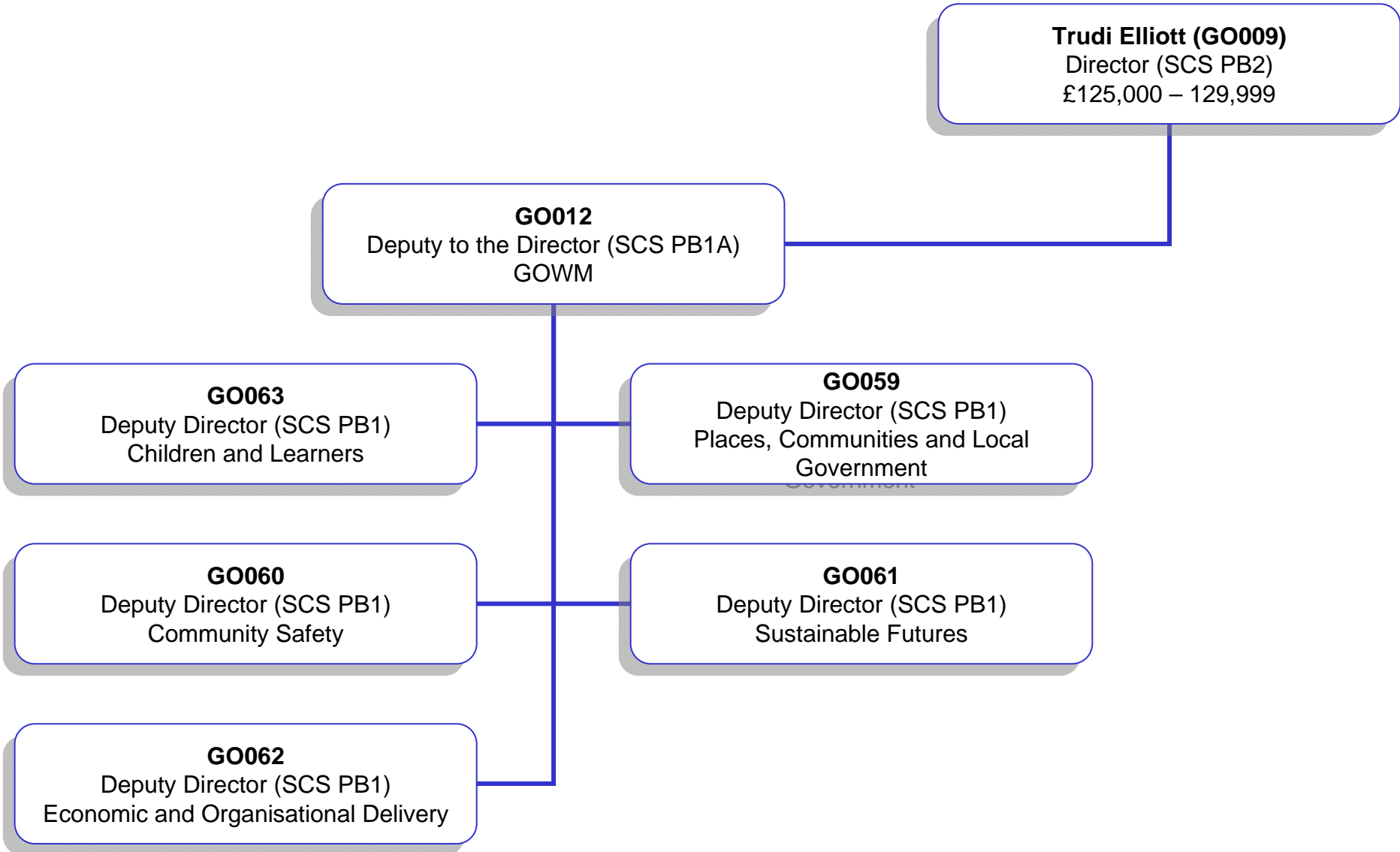
GO063
Deputy Director (SCS PB1)
Children and Learners

GO059
Deputy Director (SCS PB1)
Places, Communities and Local
Government

GO060
Deputy Director (SCS PB1)
Community Safety

GO061
Deputy Director (SCS PB1)
Sustainable Futures

GO062
Deputy Director (SCS PB1)
Economic and Organisational Delivery



Government Office West Midlands (GOWM)

Reporting Staff	AA	AO	EO	HEO	SEO	G7	G6	Grand Total
GO009			1.8	6.3	0.8	1		9.9
GO059		4	3	3.6	6.6	8.3	2	27.5
GO060		1	4.7	5.6	4.4	4	3	22.7
GO012		0.6	1	2.9	2	1		7.5
GO062	4	3.7	4.8	13.8	4.9	10	3	44.2
GO061		6.5	6.5	9.1	12.5	4	2	40.6
GO063		2.8	2.6	3	4	4	2	18.4
Grand Total	4	18.6	24.4	44.3	35.2	32.3	12	170.8

NOTE

All information taken from GO HR database as at end of June 2010.

Staff numbers include permanent GO staff, fixed-term staff, and staff on loan / secondment in.

Staff numbers exclude staff on loan / secondment out, career breaks or leave with pay.

UKTI staff are listed as reporting under the relevant director.

Government Office Yorkshire and The Humber (GOYH)

Felicity Everiss (GO010)

Director (SCS PB2)

£105,000 – 109,999

GO064

Deputy Director (SCS PB1)
Regional Resilience

GO067

Deputy Director (SCS PB1)
Children and Learners

GO065

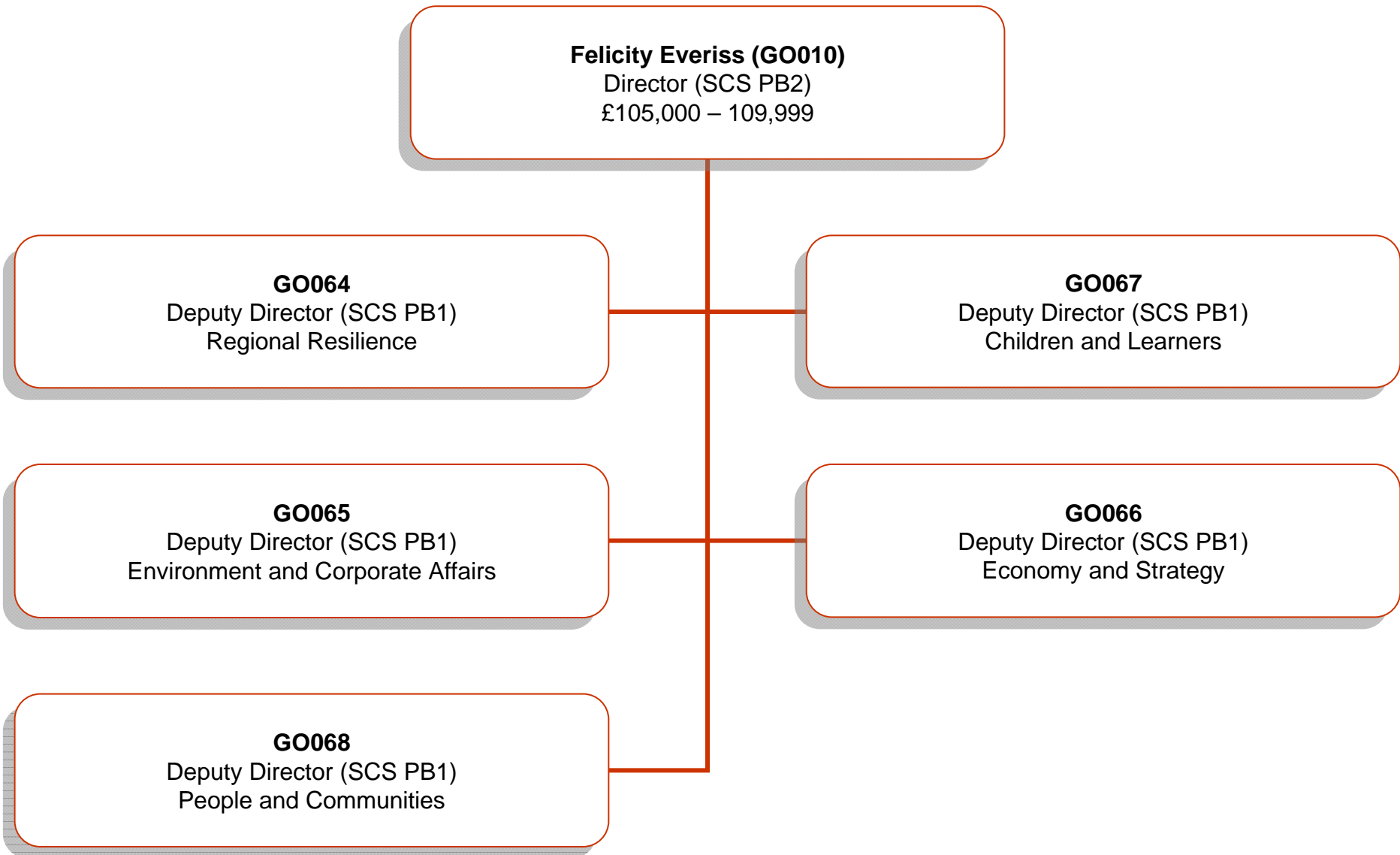
Deputy Director (SCS PB1)
Environment and Corporate Affairs

GO066

Deputy Director (SCS PB1)
Economy and Strategy

GO068

Deputy Director (SCS PB1)
People and Communities



Government Office Yorkshire and The Humber (GOYH)

Reporting Staff	AA	AO	EO	HEO	HEO (D)	SEO	G7	G6	Grand Total
GO066		1.3	4	3.5		4.8	4.8	1	19.4
GO064		1.8	6	5.3		7.7	6.7	3	30.5
GO065	0.3	1.7	3	5		6.6	2.8	1	20.4
GO010			6.8	2.6		1	1		11.4
GO068		2.5	5.6	11.4	1	9.9	11	1	42.4
GO067		1.8	4	5		4.4	3	2	20.2
Grand Total	0.3	9.1	29.4	32.8	1	34.4	29.3	8	144.3

NOTE

All information taken from GO HR database as at end of June 2010.

Staff numbers include permanent GO staff, fixed-term staff, and staff on loan / secondment in.

Staff numbers exclude staff on loan / secondment out, career breaks or leave with pay.

UKTI staff are listed as reporting under the relevant director.