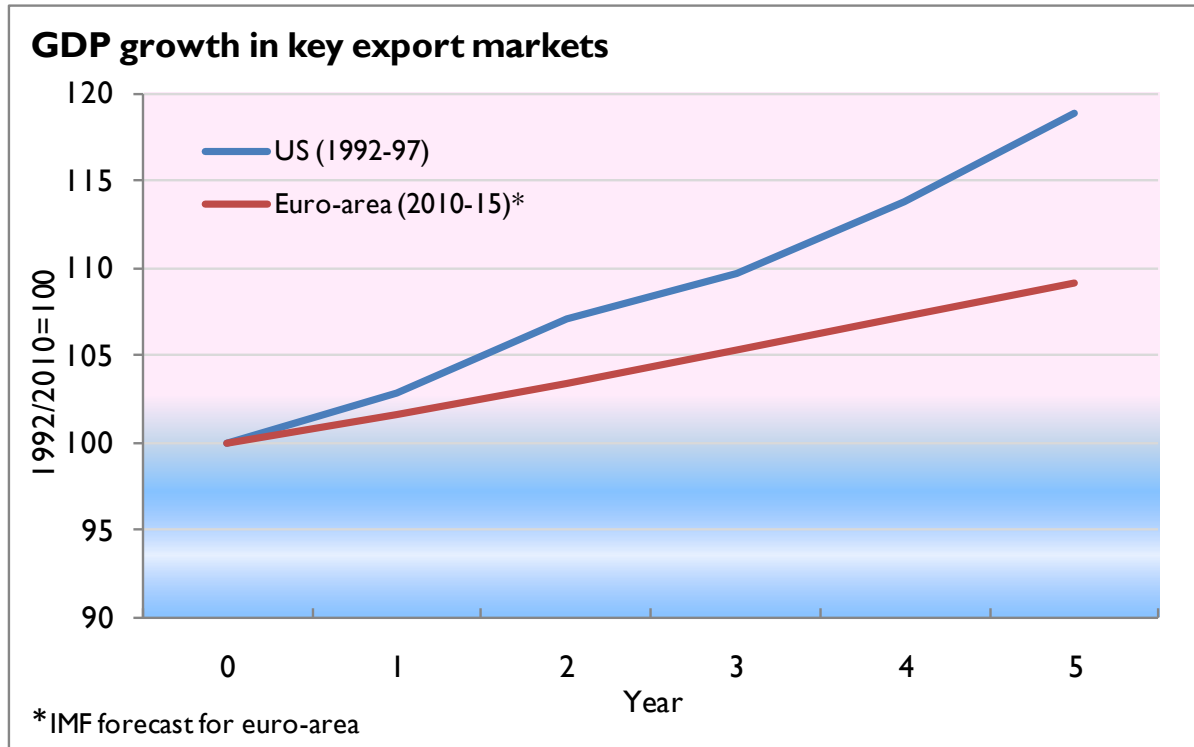


Manion Lecture 2011

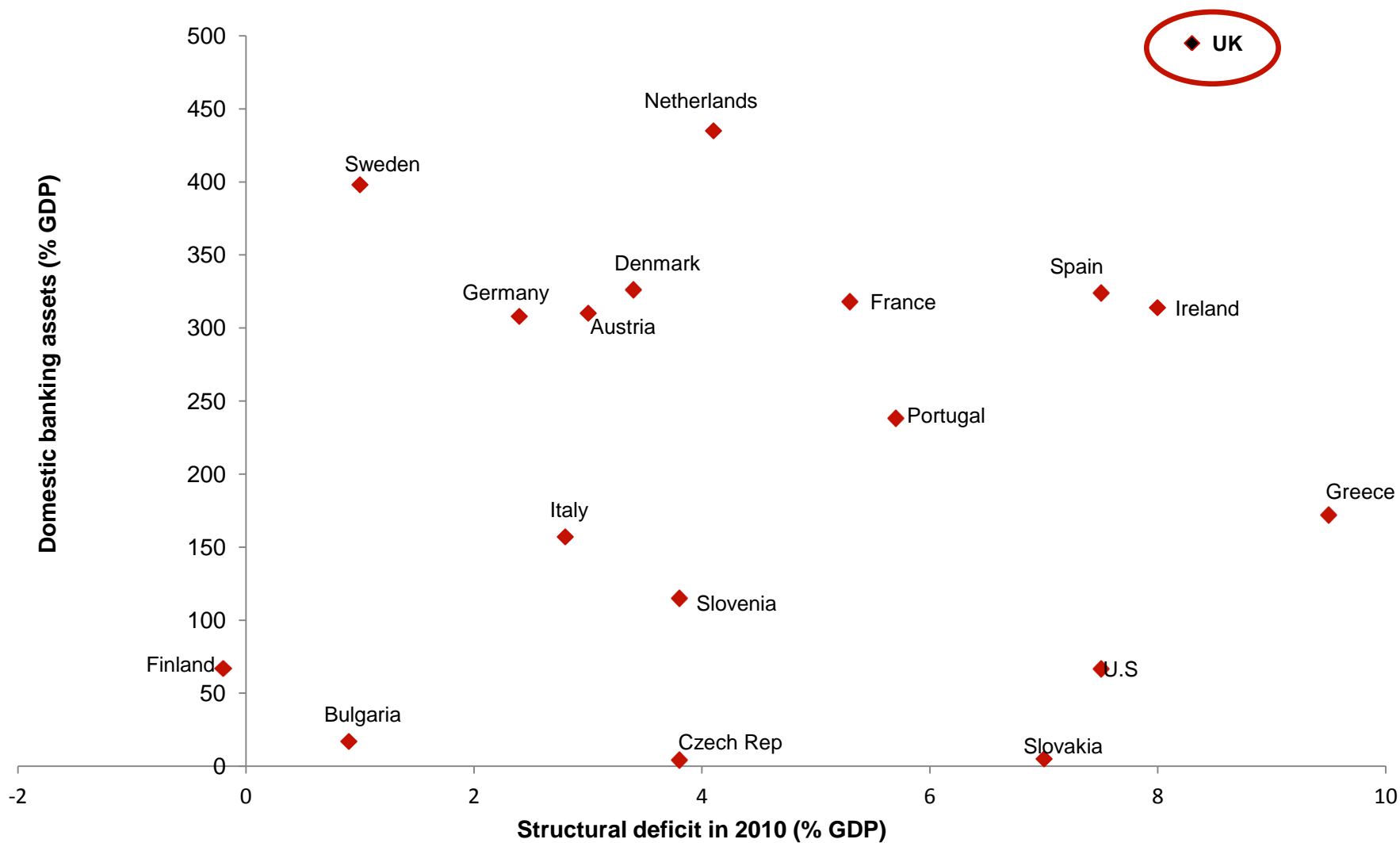
Supporting Slides

1. Export market growth



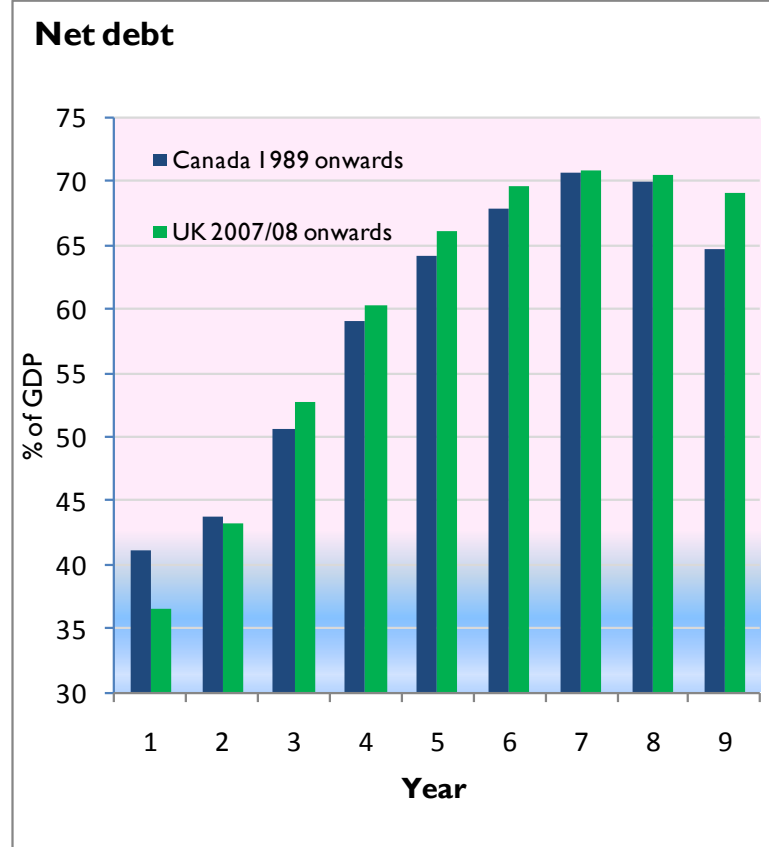
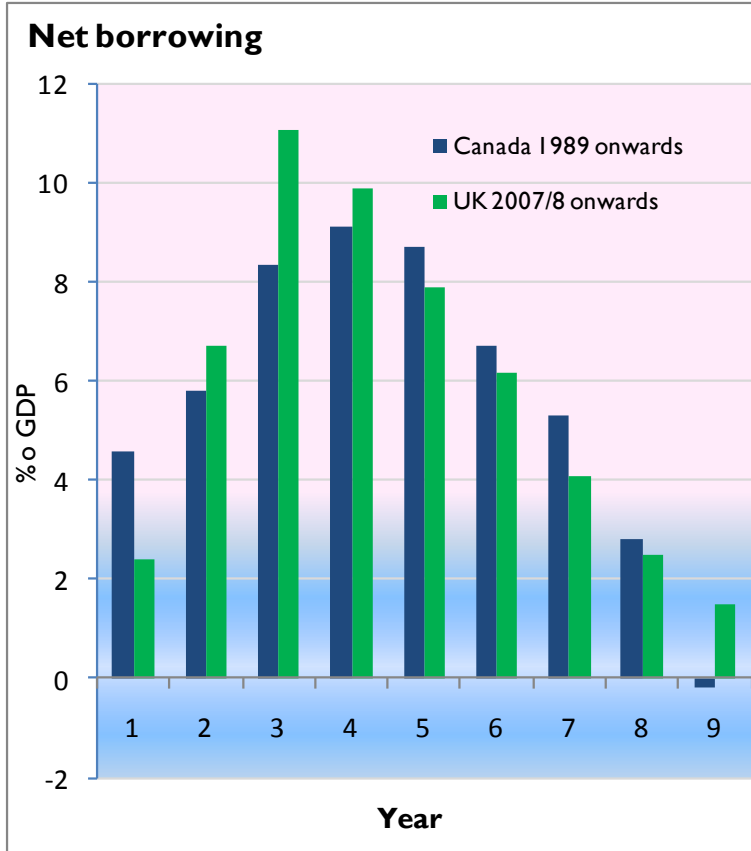
Source: IMF April 2011 World Economic Outlook

2. Fiscal and Financial Sector Vulnerabilities



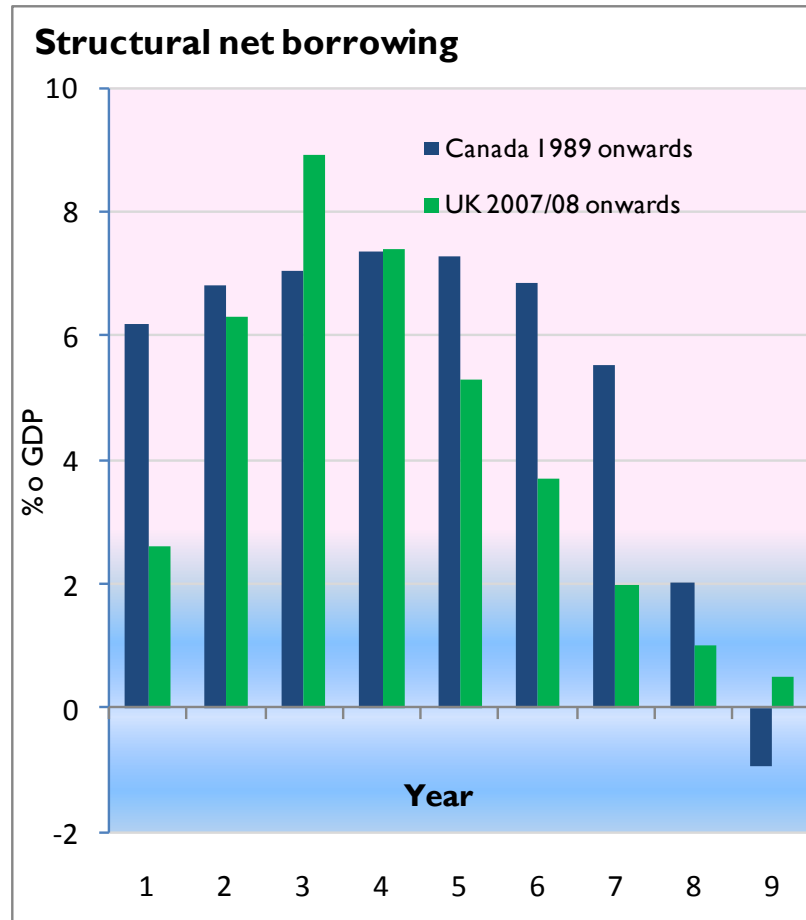
Source: ECB, Eurostat, US Fed and HMT calculations

3. Borrowing and debt



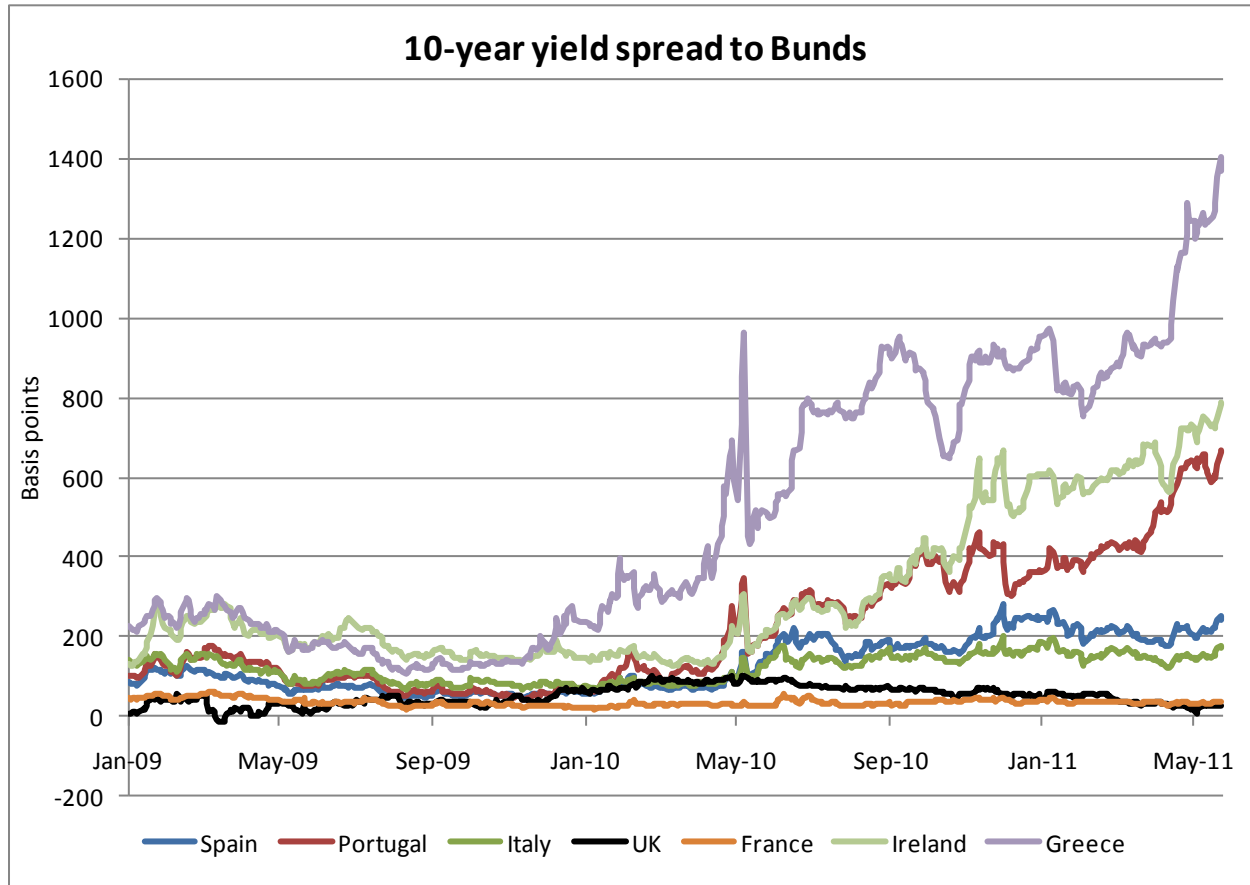
Source: OBR March 2011 *Economic and Fiscal Outlook* (for the UK), IMF April 2011 *World Economic Outlook* (for Canada)

4. Structural borrowing



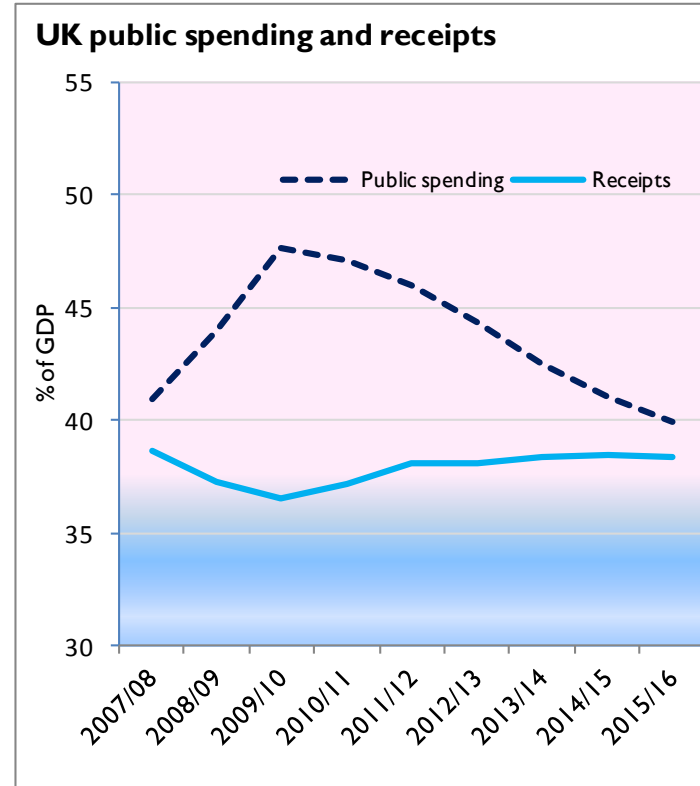
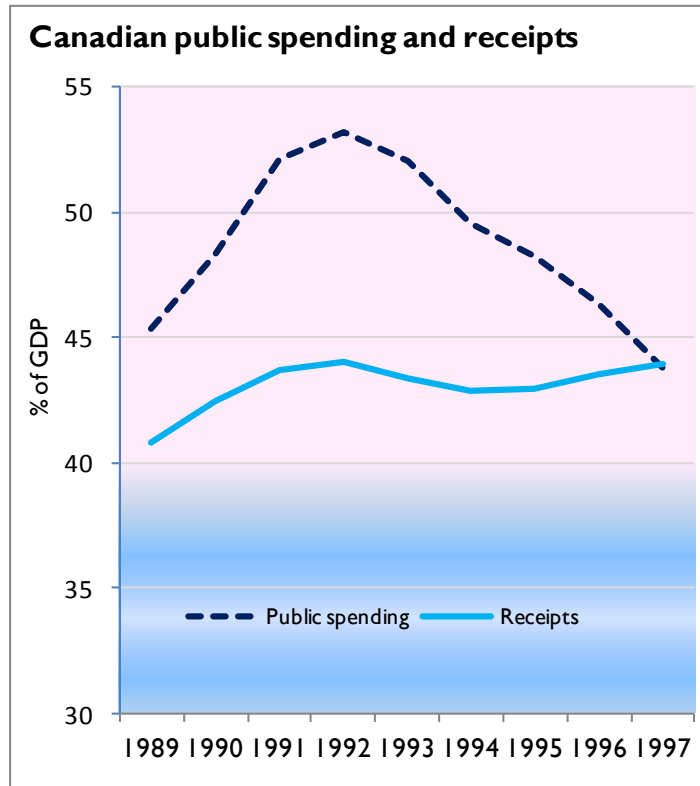
Source: OBR March 2011 *Economic and Fiscal Outlook (for the UK)*, IMF April 2011 *World Economic Outlook (for Canada)*

5. Bond yield spreads



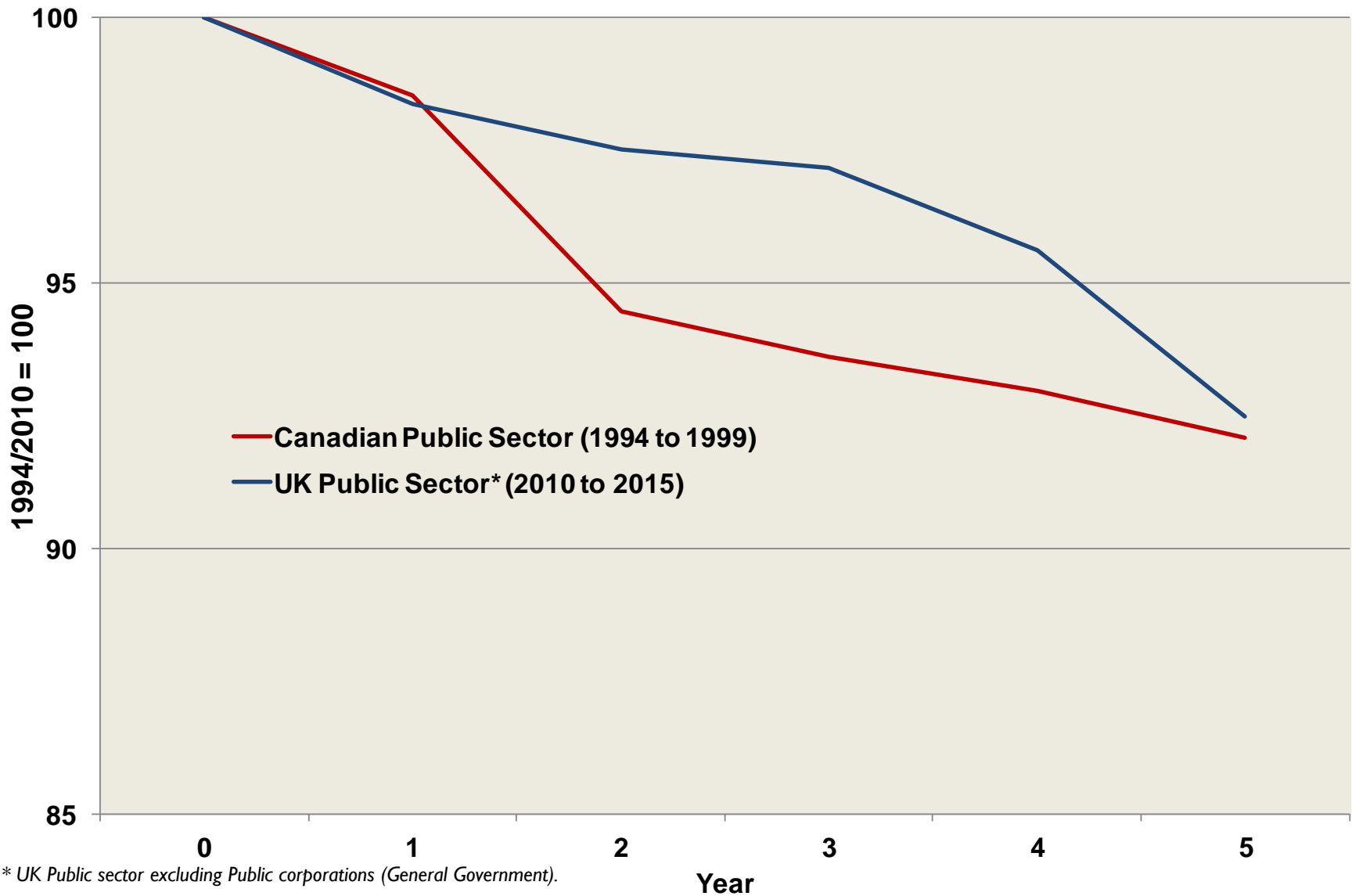
UNCLASSIFIED

6. Comparison of consolidations



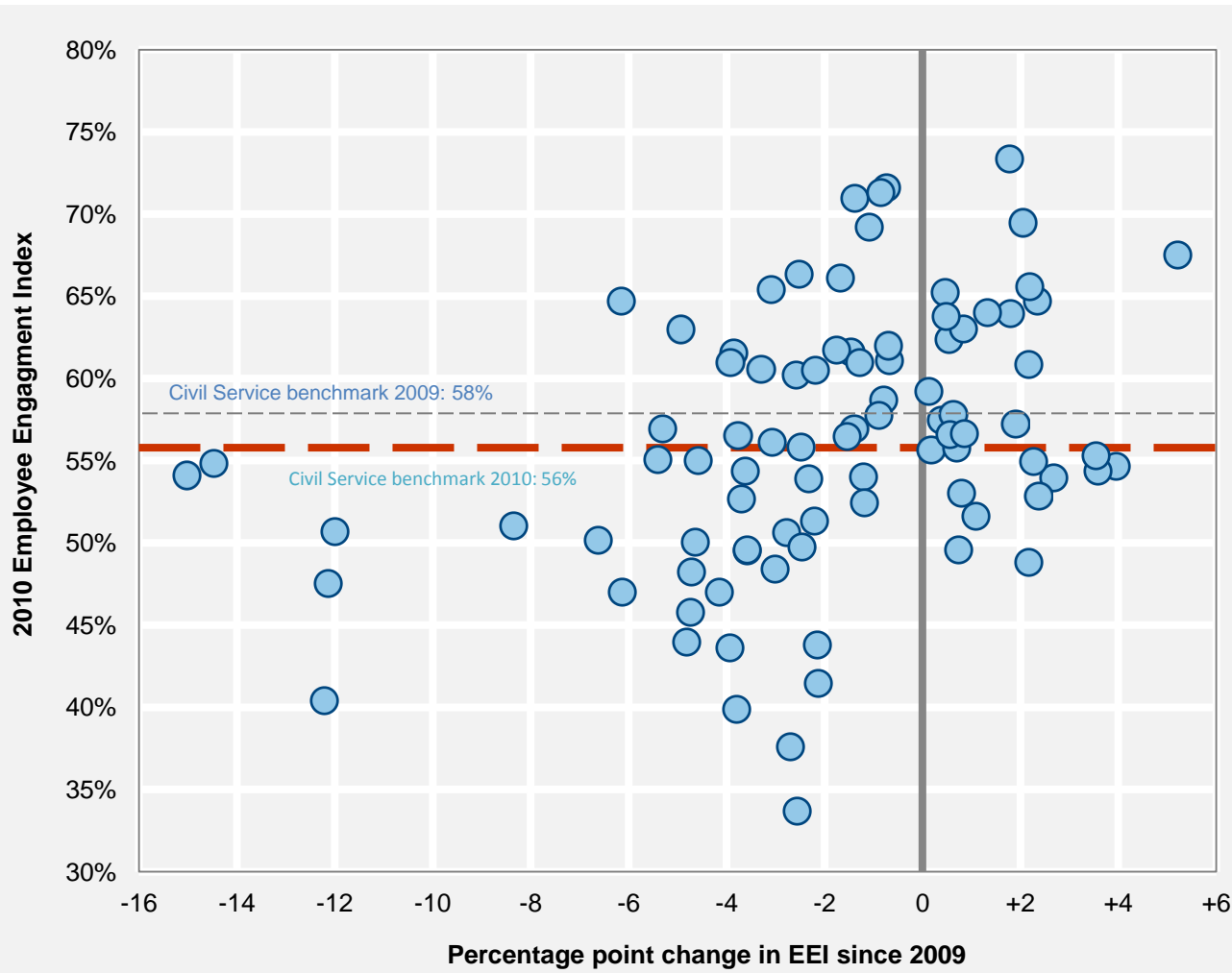
Source: OBR March 2011 Economic and Fiscal Outlook (for the UK), IMF April 2011 World Economic Outlook (for Canada)

7. Changes to Public Sector Employment*



* UK Public sector excluding Public corporations (General Government).

8. Civil Service Engagement: 2010 Civil Service People Survey



Source: Civil Service People Survey 2010

The Civil Service's employee engagement framework views engagement as the emotional contribution staff provide to their organisation. We measure engagement using five questions:

I am proud when I tell others I work for [my organisation]

I would recommend [my organisation] as a great place to work

I feel a strong personal attachment to [my organisation]

[My organisation] inspires me to do the best in my job

[My organisation] motivates me to help it achieve its objectives

9. Drivers of Engagement

