



14 February 2017

Year: 2017 Week: 06

## In This Issue:

- Key Messages.
- Weekly summary.
- Total contacts.
- Syndromic indicators.
- Notes and caveats.
- Further information.
- Acknowledgements.

## Syndromic indicators at a glance:

Number of contacts and percentage of Read coded contacts.

## 1: Total out-of-hours contacts:

Daily total number of out-of-hours and unscheduled contacts and 7 day average (adjusted for bank holidays).

## Key messages

Data to: 12 February 2017

GP out of hours consultations for gastroenteritis increased during week 6 and particularly in children aged 5-14 years (figures 7 and 7a).

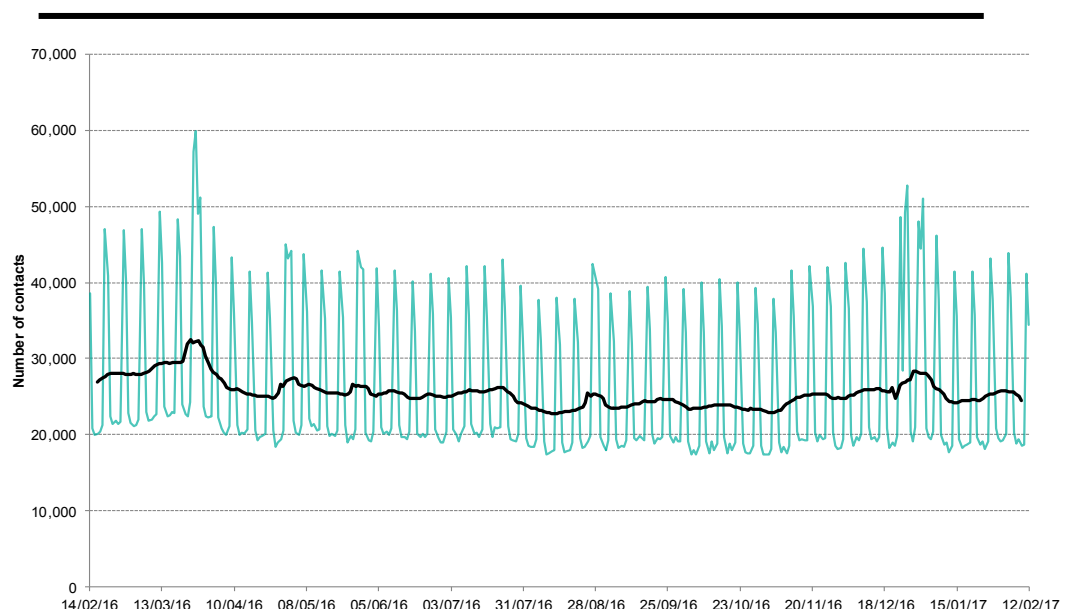
A Cold Watch System operates in England from 1 November to 31 March each year. As part of the Public Health England Cold Weather Plan for England the PHE Real-time Syndromic Surveillance Team will be monitoring the impact of cold weather on syndromic surveillance data during this period.

Cold weather alert level (current reporting week): **Level 2 Alert and readiness - 3 Severe weather action**

<http://www.metoffice.gov.uk/weather/uk/coldweatheralert/>

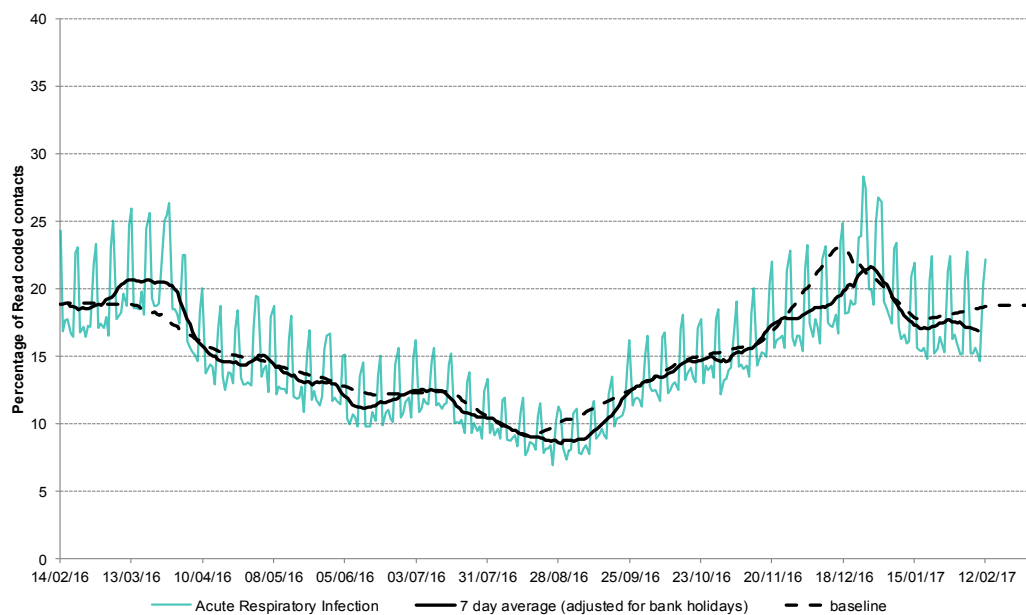
Key indicator	No. of contacts	% Week 06	% Week 05	Trend*
All OOH contacts, all causes	171,208			
Acute respiratory infection	15,104	18.03	18.65	↔
Influenza-like illness	278	0.33	0.38	↓
Bronchitis/bronchiolitis	218	0.26	0.29	↓
Difficulty breathing/wheeze/asthma	1,725	2.06	2.26	↓
Pharyngitis	80	0.10	0.13	↔
Gastroenteritis	3,798	4.53	4.43	↑
Diarrhoea	861	1.03	1.03	↔
Vomiting	1,304	1.56	1.51	↔
Myocardial infarction	910	1.09	1.16	↔

\*Trend: reports on the trend seen over previous weeks in the percentage of Read coded contacts.

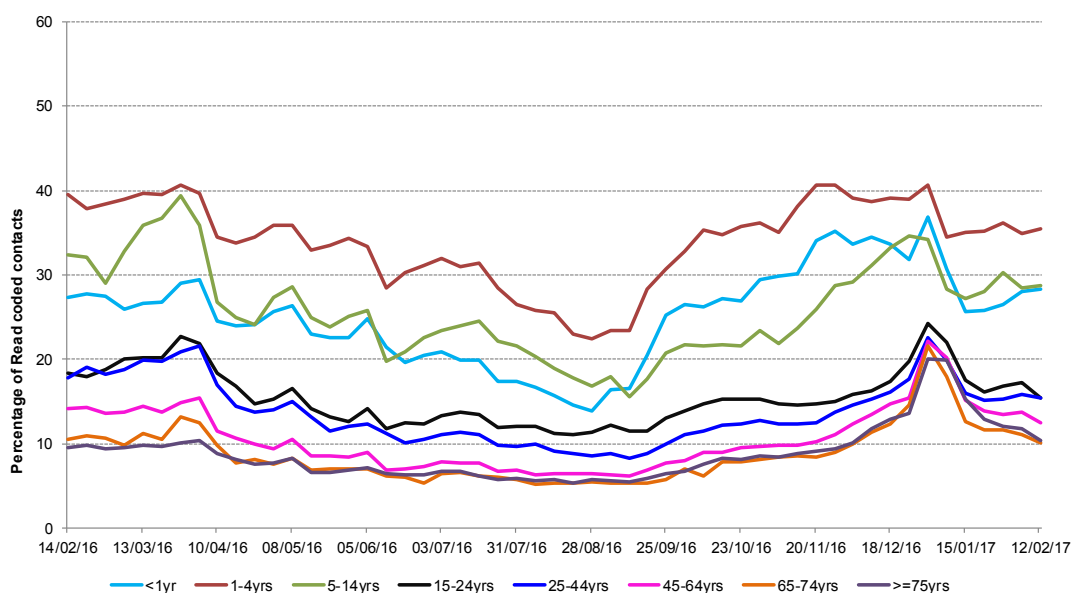


**2: Acute Respiratory Infection daily contacts.**

Shown as a percentage of the total contacts with a Read code and as a 7 day average\*.

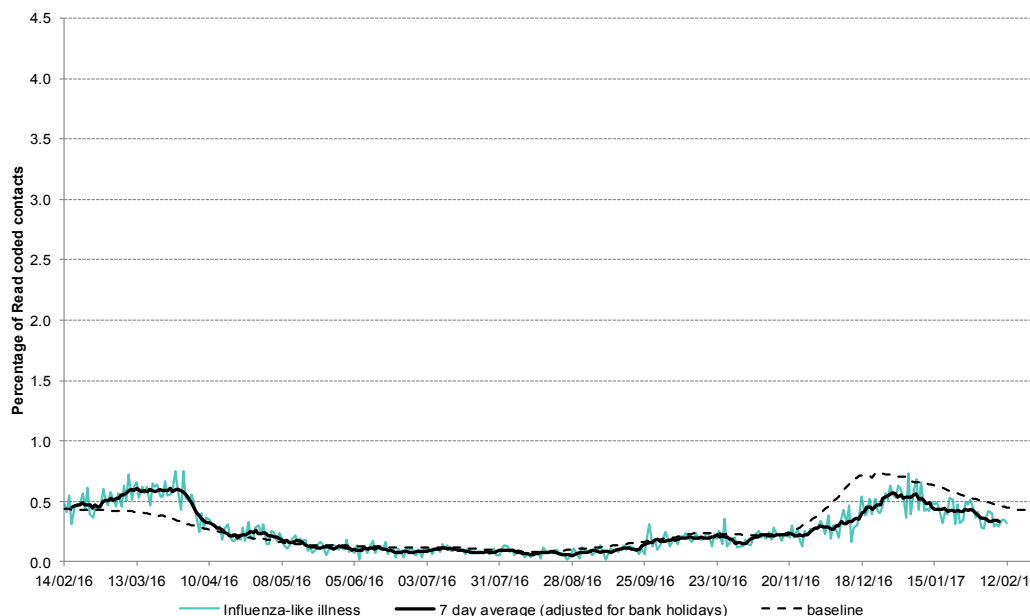


**2a: Acute respiratory infection weekly contacts by age group.**



**3: Influenza-like illness daily contacts.**

Shown as a percentage of the total contacts with a Read code and as a 7 day average\*.

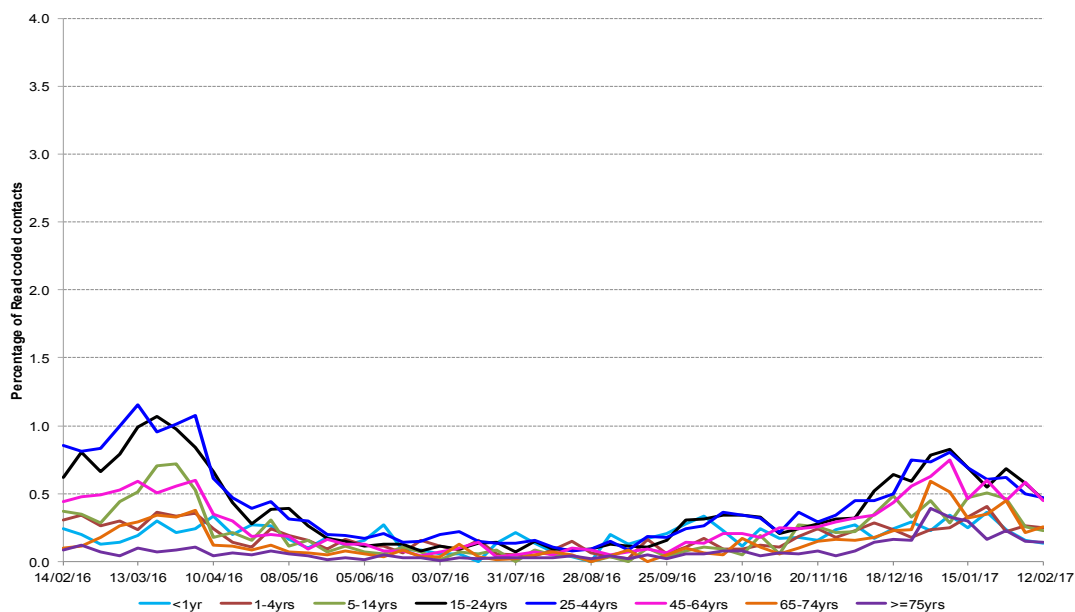


\*7-day moving average adjusted for bank holidays.

14 February 2017

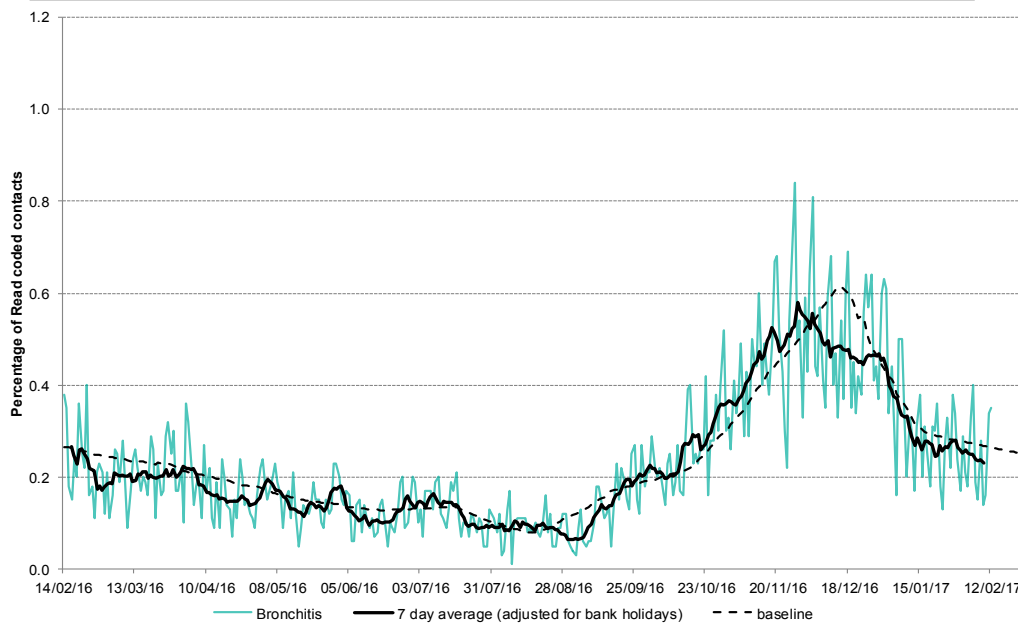
Year: 2017 Week: 06

**4a: Influenza-like illness weekly contacts by age group.**

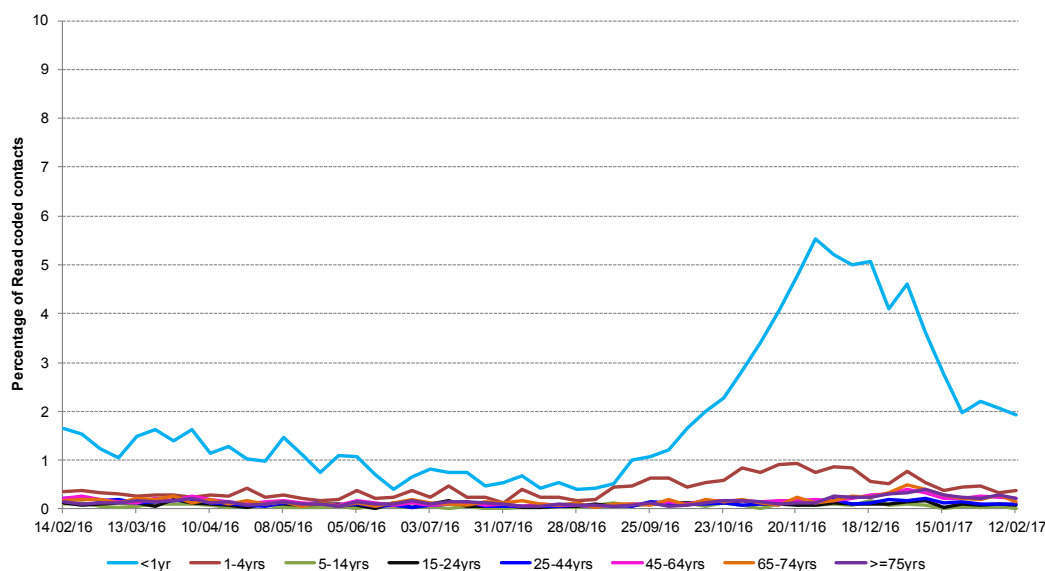


**4: Bronchitis/ bronchiolitis daily contacts.**

Shown as a percentage of the total contacts with a Read code and as a 7 day average\*.



**4a: Bronchitis/ bronchiolitis weekly contacts by age group.**

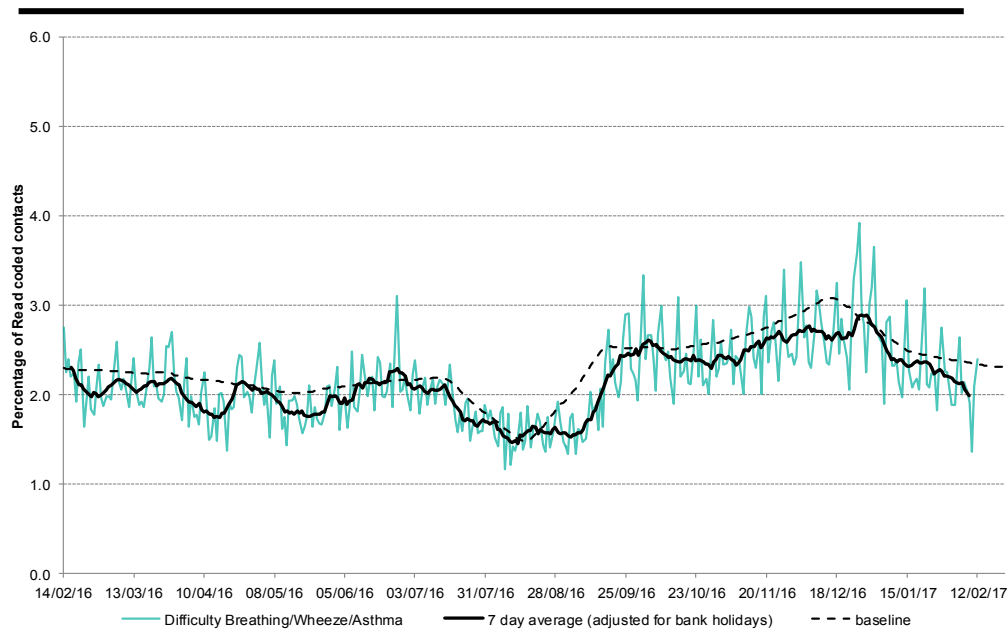


\*7-day moving average adjusted for bank holidays.

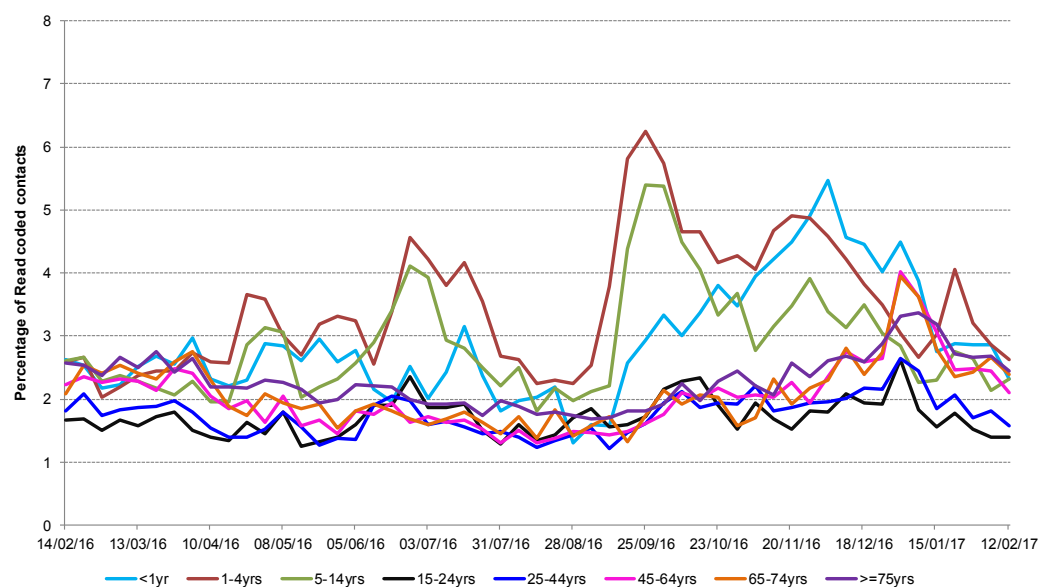
Intentionally left blank.

**5: Difficulty breathing/  
wheeze/asthma daily  
contacts.**

Shown as a percentage  
of the total contacts with  
a Read code and as a 7  
day average\*.



**5a: Difficulty  
breathing/wheeze/  
asthma weekly  
contacts by age  
group.**



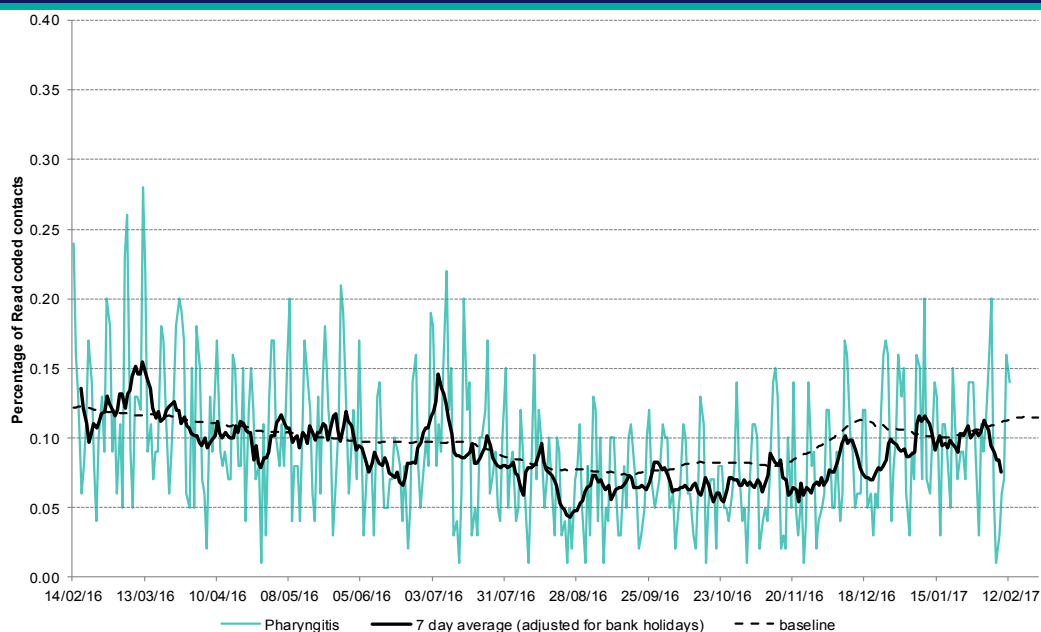
\*7-day moving average  
adjusted for bank  
holidays.

14 February 2017

Year: 2017 Week: 06

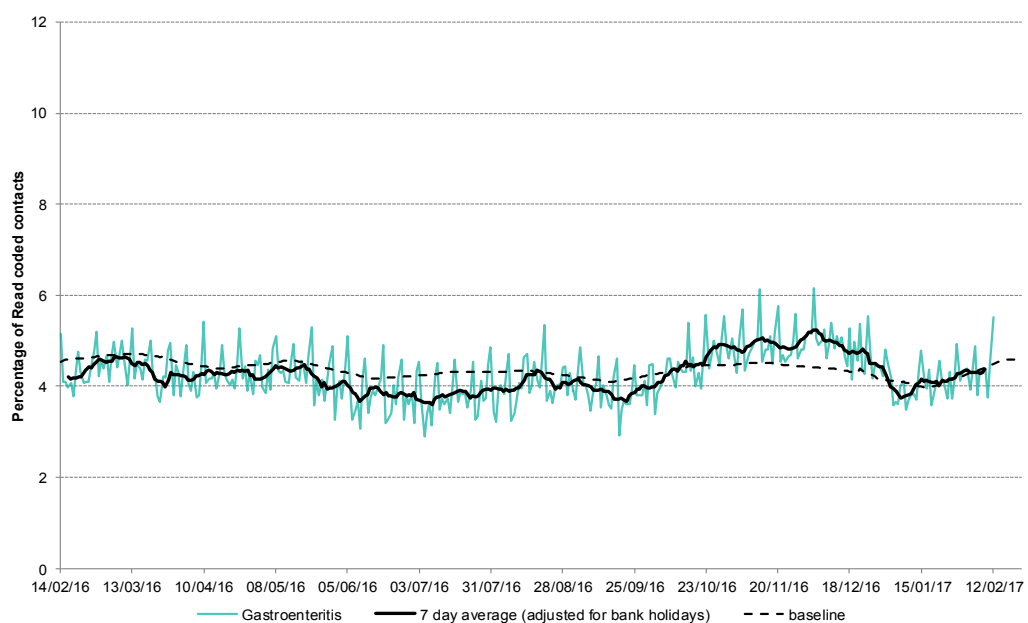
**6: Acute pharyngitis and persistent sore throat.**

Shown as a percentage of the total contacts with a Read code and as a 7 day average\*.

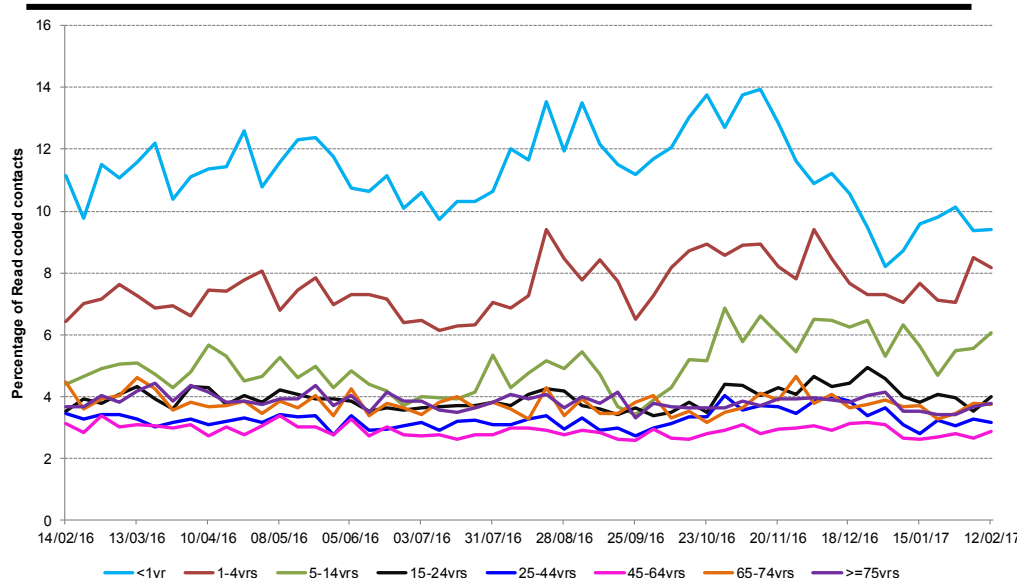


**7: Gastroenteritis daily contacts**

Shown as a percentage of the total contacts with a Read code and as a 7 day average\*.



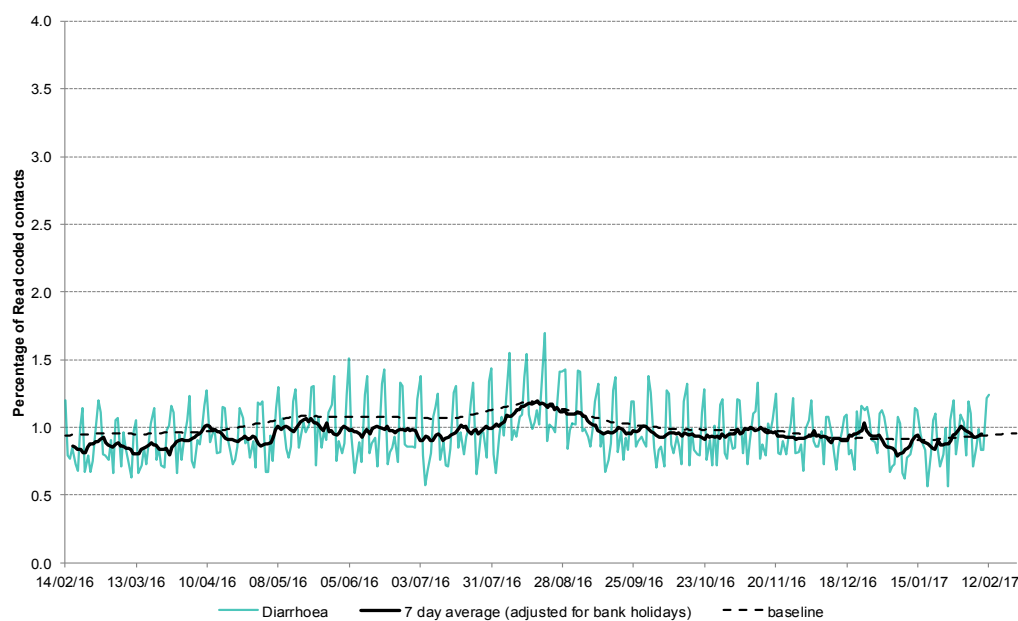
**7a: Gastroenteritis weekly contacts by age group.**



\*7-day moving average adjusted for bank holidays.

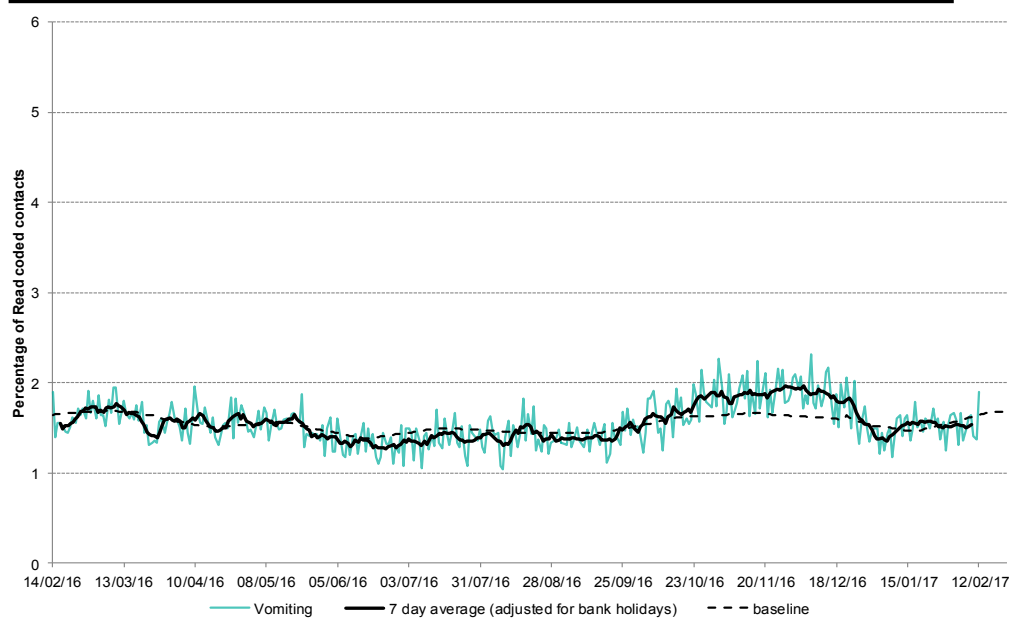
**8: Diarrhoea daily contacts.**

Shown as a percentage of the total contacts with a Read code and as a 7 day average\*.

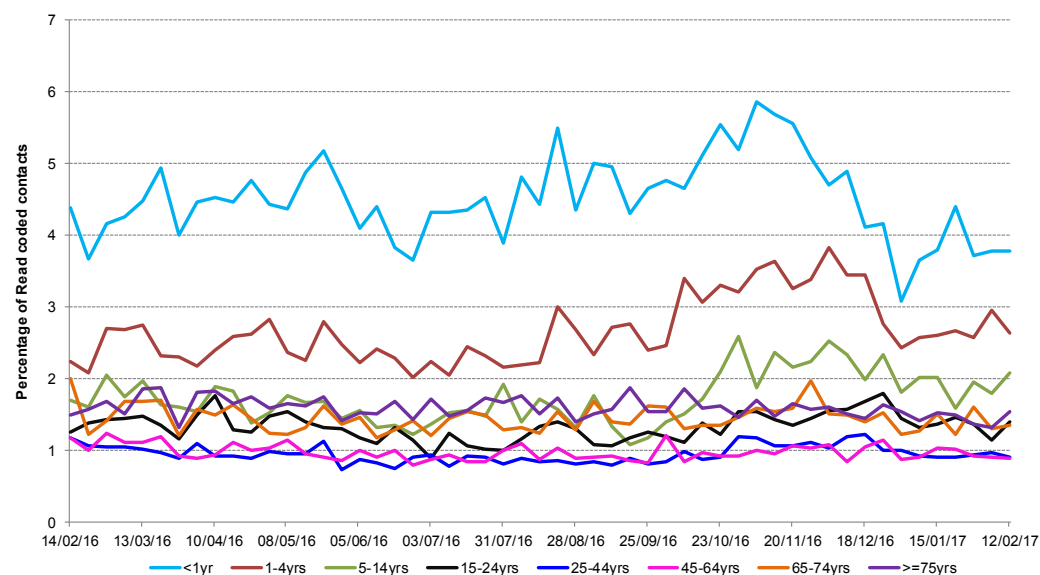


**9: Vomiting daily contacts.**

Shown as a percentage of the total contacts with a Read code and as a 7 day average\*.



**9a: Vomiting weekly contacts by age group.**



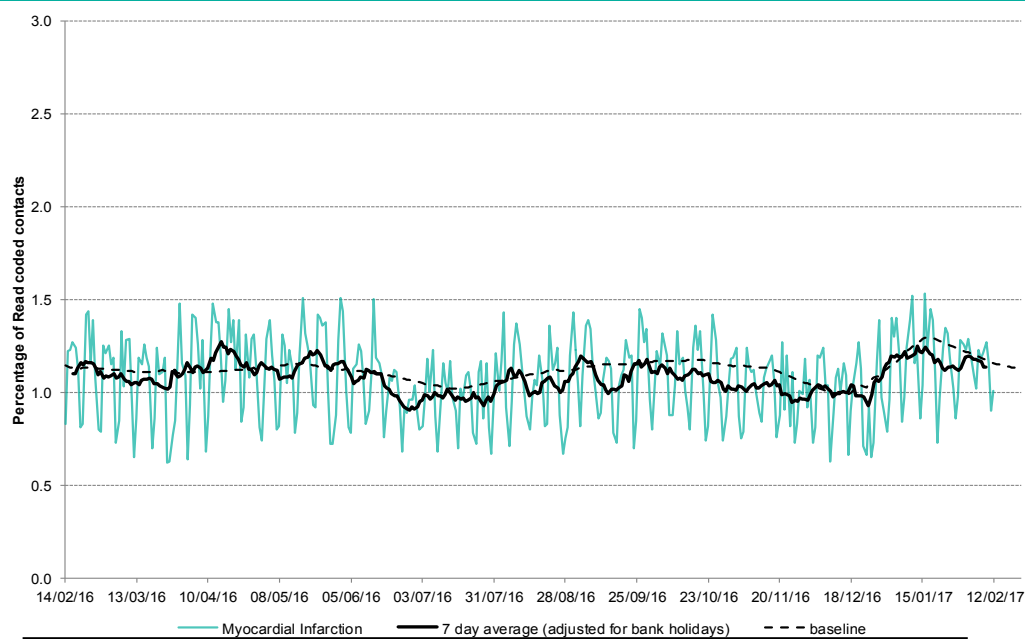
\*7-day moving average adjusted for bank holidays.

14 February 2017

Year: 2017 Week: 06

## 10: Myocardial Infarction daily contacts.

Shown as a percentage of the total contacts with a Read code and as a 7 day average\*.



Intentionally left blank.

Intentionally left blank.

\*7-day moving average adjusted for bank holidays.

14 February 2017

Year: 2017 Week: 06

## Notes and caveats:

- This bulletin presents data from the Public Health England (PHE) GP Out-of-hours\Unscheduled Care Surveillance System (GP OOHSS).
- Fully anonymised data from GP out-of-hours (OOH) and unscheduled care service providers in England are being transferred to the PHE for analysis and interpretation by the PHE Real-time Syndromic Surveillance Team (ReSST).
- This system supplements existing PHE syndromic surveillance systems by monitoring data on general practitioner consultations outside of routine surgery opening times (evenings, weekends and bank holidays) and unplanned contacts within NHS primary care.
- The key indicators presented within this bulletin are derived by grouping selected Read coded consultations.
- GP OOH consultation data are analysed on a daily basis to identify national and regional trends. A statistical algorithm underpins each system, routinely identifying activity that has increased significantly or is statistically significantly high for the time of year. Results from these daily analyses are assessed by the ReSST, along with analysis by age group, and anything deemed of public health importance is alerted by the team.
- Baselines represent seasonally expected levels of activity and are constructed from historical data. Furthermore, they take into account any known substantial changes in data collection, population coverage or reporting practices. Baselines are refreshed using the latest data on a regular basis.

## Further information:

The GP Out-of-Hours Surveillance System Bulletin can also be downloaded from the PHE Real-time Syndromic Surveillance website which also contains more information about syndromic surveillance:

<https://www.gov.uk/government/collections/syndromic-surveillance-systems-and-analyses>

## Acknowledgements:

We are grateful to Advanced Health and Care and the GP out-of-hours and unscheduled care service providers who have kindly agreed to participate in this system.

---

### PHE Out-of-Hours/Unscheduled Care Surveillance

**Produced by:** PHE Real-time Syndromic Surveillance Team  
6<sup>th</sup> Floor, 5 St Philip's Place, Birmingham, B3 2PW

**Tel:** 0344 225 3560 > Option 4 > Option 2      **Fax:** 0121 236 2215

**Web:** <https://www.gov.uk/government/collections/syndromic-surveillance-systems-and-analyses>

## Contact ReSST:

[syndromic\\_surveillance@phe.gov.uk](mailto:syndromic_surveillance@phe.gov.uk)