



Public Health
England

National Antenatal Infections Screening Monitoring. Data tables : England 2006 - 2015

Data type: service data

Data supplied by

Public Health England
National Antenatal Infection Screening Monitoring (NAISM) Programme
NHS Infectious Diseases in Pregnancy Screening (IDPS) Programme

Data prepared by

HIV and Sexually Transmitted Infections Department
National Infections Service
Public Health England
61 Colindale Avenue
London
NW9 5EQ

Tel: 020-8200-6868

Website: www.gov.uk/phe



Public Health
England

Table 1: Contents

Important information

Public Health England

Data tables

Table 1.	Reported uptake of antenatal screening for infectious diseases in England: 2006 - 2015
Figure 1.	Reported uptake of antenatal screening for infectious diseases in England: 2006 - 2015
Table 2a.	Proportion of pregnant women screening positive for hepatitis B infection in England: 2006-2015
Table 2b.	Proportion of pregnant women positive for HIV infection in England: 2006-2015
Table 2c.	Proportion of pregnant women screening positive for syphilis infection in England: 2006-2015
Table 2d.	Proportion of pregnant women screening as susceptible to rubella infection in England: 2006-2015



Table 1: Notes & glossary

Notes: data type

Service data: England data represent data for women attending antenatal services in England

Notes: general

1. Screening is offered and recommended to all pregnant women in England as part of the UK National Screening Committee's NHS Infectious Disease in Pregnancy Screening Programme.
2. Data are collected at maternity unit or trust level on the number of pregnant women attending and booking for antenatal care; the number screened for each of the four infections and results of the screening tests, together with the number of women previously diagnosed with hepatitis B or HIV.
3. These data are requested and collated by PHE's Field Epidemiology Teams with support from some Regional Antenatal and Newborn Screening Quality Assurance teams and sent to PHE's National Infections Service.
4. As part of the data processing, data exclusions and adjustments were made. Therefore differences in the denominators may occur.

Glossary:

NAISM	National Antenatal Infection Screening Monitoring
IDPS	Infectious Diseases in Pregnancy Screening programme
HIV	Human Immunodeficiency Virus
NIS	National Infections Service



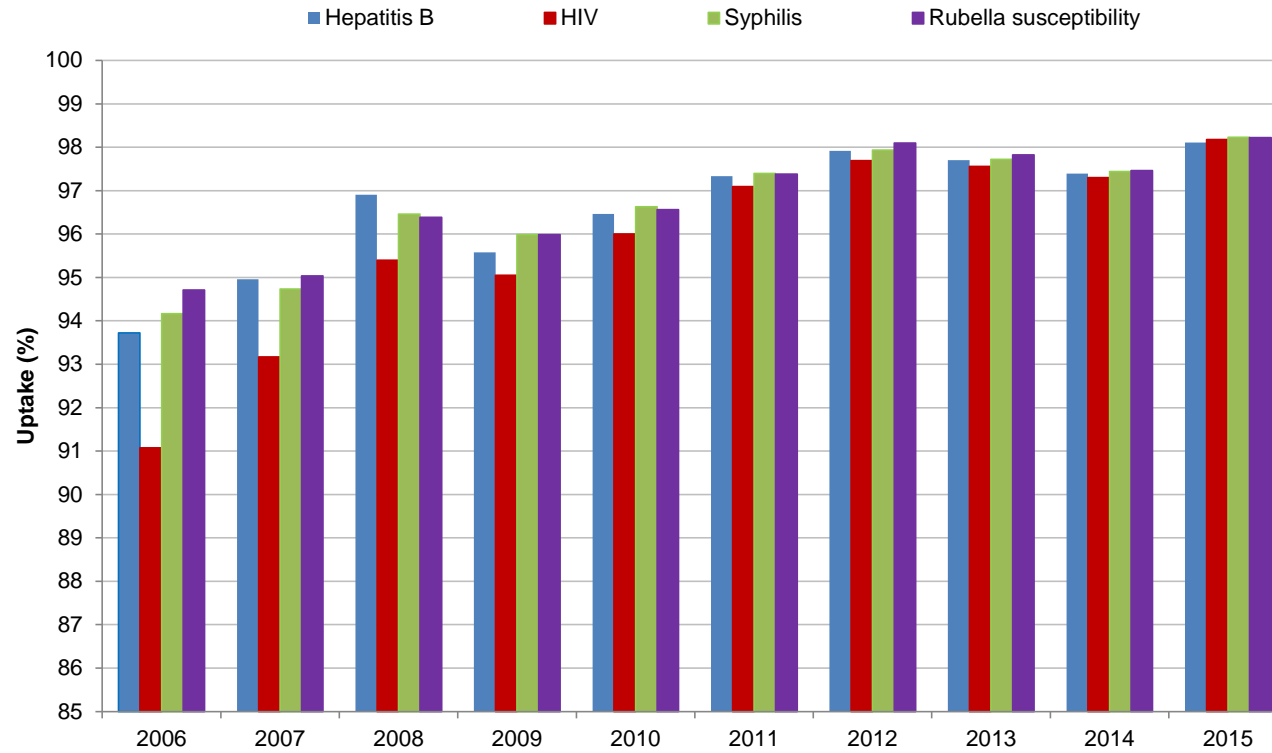
Table 1. Reported uptake of antenatal screening for infectious diseases in England: 2006 - 2015

	2006	2007	2008	2009	2010	2011	2012	2013	2014	2015
Hepatitis B	93.72%	94.96%	96.91%	95.58%	96.46%	97.34%	97.92%	97.70%	97.70%	98.11%
HIV	91.07%	93.17%	95.39%	95.05%	96.01%	97.09%	97.69%	97.56%	97.56%	98.18%
Syphilis	94.17%	94.74%	96.46%	95.99%	96.63%	97.39%	97.94%	97.72%	97.72%	98.23%
Rubella susceptibility	94.71%	95.04%	96.38%	95.99%	96.56%	97.38%	98.10%	97.82%	97.82%	98.22%

* In 2011 a change in the way denominator data were collected was introduced improving the accuracy and consistency of the estimates from then on.



Figure 1. Reported uptake of antenatal screening for infectious diseases in England: 2006 - 2015*



* In 2011 a change in the way denominator data were collected was introduced improving the accuracy and consistency of the estimates from then on.



Table 2a. Proportion of pregnant women screening positive for hepatitis B infection in England: 2006-2015

Hepatitis B ¹											
Region		2006	2007	2008	2009	2010	2011	2012	2013	2014	2015
East Midlands	Number Tested	25362	32988	43453	44209	51203	55561	53592	40315	39388	46265
	Number Positive ²	52	74	91	127	141	202	176	106	116	137
	% Positive	0.21	0.22	0.21	0.29	0.28	0.36	0.33	0.26	0.29	0.30
	% Newly diagnosed ³	–	–	–	0.15	0.14	0.31	0.12	0.06	0.07	0.10
East of England	Number Tested	66423	72397	72349	76575	76157	72623	62171	76073	83524	90301
	Number Positive ²	189	178	216	211	218	196	203	197	306	342
	Public Health England	0.28	0.25	0.30	0.28	0.29	0.27	0.33	0.26	0.37	0.38
	% Newly diagnosed ³	–	–	–	0.17	0.16	–	0.11	0.11	0.15	0.13
London	Number Tested	135359	144452	147916	151214	149805	137490	147142	147411	143513	151824
	Number Positive ²	1541	1701	1558	1596	1489	1409	1577	1367	1280	1258
	% Positive	1.14	1.18	1.05	1.06	0.99	1.02	1.07	0.93	0.89	0.83
	% Newly diagnosed ³	–	–	–	0.54	0.47	0.42	0.45	0.35	0.32	0.27
North East	Number Tested	26079	30612	32557	30719	32182	33311	31959	30702	29828	32234
	Number Positive ²	40	41	57	73	82	64	56	53	63	83
	% Positive	0.15	0.13	0.18	0.24	0.25	0.19	0.18	0.17	0.21	0.26
	% Newly diagnosed ³	–	–	–	0.19	0.19	0.19	0.09	0.07	0.04	0.09
North West	Number Tested	81796	88255	83570	78732	85883	79607	77800	91970	78983	89870
	Number Positive ²	263	273	248	235	237	187	266	315	208	254
	% Positive	0.32	0.31	0.30	0.30	0.28	0.23	0.34	0.34	0.26	0.28
	% Newly diagnosed ³	–	–	–	0.19	0.18	–	0.16	0.13	0.11	0.10
South East	Number Tested	103154	105907	107137	110002	113230	105874	106145	105810	107431	106738
	Number Positive ²	282	265	301	296	313	275	306	303	299	276
	% Positive	0.27	0.25	0.28	0.27	0.28	0.26	0.29	0.29	0.28	0.26
	% Newly diagnosed ³	–	–	–	0.16	0.13	0.09	0.12	0.10	0.10	0.07
South West	Number Tested	43222	50662	59553	60163	64234	66313	65596	57286	56293	63583
	Number Positive ²	65	75	119	111	113	99	123	91	87	121
	% Positive	0.15	0.15	0.20	0.18	0.18	0.15	0.19	0.16	0.15	0.19
	% Newly diagnosed ³	–	–	–	0.12	0.11	–	0.07	0.05	0.06	0.06
West Midlands	Number Tested	69987	69678	76029	77518	81325	75379	70595	66922	72668	73970
	Number Positive ²	284	250	312	313	319	239	251	121	275	290
	% Positive	0.41	0.36	0.41	0.40	0.39	0.32	0.36	0.32	0.38	0.39
	% Newly diagnosed ³	–	–	–	0.20	0.10	0.10	0.09	0.08	0.06	0.07
Yorkshire & Humber	Number Tested	63214	66954	66453	70663	69959	66262	71004	63047	69632	69110
	Number Positive ²	157	234	296	246	228	210	220	296	210	221
	% Positive	0.25	0.35	0.45	0.35	0.33	0.31	0.31	0.47	0.30	0.32
	% Newly diagnosed ³	–	–	–	0.18	0.14	0.14	0.09	0.12	0.07	0.06
National	Number Tested	614596	661905	689017	699795	723978	692420	686004	679,536	681,260	723895
	Number Positive²	2873	3091	3198	3208	3140	2881	3178	2849	2844	2982
	% Positive	0.47	0.47	0.46	0.46	0.43	0.42	0.46	0.42	0.42	0.41
	% Newly diagnosed³	–	–	–	0.23	0.20	0.23	0.18	0.15	0.14	0.12

¹ Beginning in 2009, additional data were collected regarding women who were previously diagnosed with hepatitis B. From 2009, the % positive refers to those who were previously diagnosed and retested in this pregnancy and newly diagnosed women.

- 2 The number positive is the total number of women who screened positive during antenatal screening which comprises: women newly diagnosed and those previously diagnosed and retested in this pregnancy.
- 3 The proportion of women newly diagnosed = number of newly diagnosed women/(Number of women screened - previously diagnosed women)



Table 2b. Proportion of pregnant women positive for HIV infection in England: 2006-2015

		HIV ¹									
Region		2006	2007	2008	2009	2010	2011	2012	2013	2014	2015
East Midlands	Number Tested	20777	34492	45766	41542	48323	52581	53408	40257	39356	42623
	Number Positive ²	23	36	54	42	88	108	94	56	49	62
	% Positive	0.11	0.10	0.12	0.10	0.18	0.20	0.18	0.14	0.12	0.15
	% Newly diagnosed ³	–	–	–	0.03	0.07	0.16	0.05	0.01	0.02	0.02
East of England	Number Tested	64002	66479	72104	75196	75715	72439	62464	78102	86175	90200
	Number Positive ²	114	80	100	105	110	90	73	62	112	125
	Public Health England	0.18	0.12	0.14	0.14	0.15	0.12	0.12	0.08	0.13	0.14
	% Newly diagnosed ³	–	–	–	0.08	0.08	–	0.02	0.03	0.05	0.05
London	Number Tested	128152	138994	145098	149281	144681	134115	146448	148931	145935	151703
	Number Positive ²	510	445	539	595	465	525	573	486	431	461
	% Positive	0.40	0.32	0.37	0.40	0.32	0.39	0.39	0.33	0.30	0.30
	% Newly diagnosed ³	–	–	–	0.15	0.12	0.10	0.09	0.10	0.06	0.07
North East	Number Tested	26386	29976	28679	30545	30876	33162	31914	30688	29951	32154
	Number Positive ²	26	24	19	18	42	27	31	20	24	28
	% Positive	0.10	0.08	0.07	0.06	0.14	0.08	0.10	0.07	0.08	0.09
	% Newly diagnosed ³	–	–	–	0.02	0.08	0.08	0.03	0.02	0.02	0.03
North West	Number Tested	73319	81927	81852	78512	84972	79221	80253	91582	85771	90455
	Number Positive ²	64	92	92	87	63	47	145	124	78	104
	% Positive	0.09	0.11	0.11	0.11	0.07	0.06	0.18	0.14	0.09	0.11
	% Newly diagnosed ³	–	–	–	0.07	0.03	–	0.04	0.03	0.03	0.03
South East	Number Tested	101683	104950	105946	110121	111817	105708	107225	105248	107390	106695
	Number Positive ²	157	152	149	135	147	152	128	106	102	90
	% Positive	0.15	0.14	0.14	0.12	0.13	0.14	0.12	0.10	0.09	0.08
	% Newly diagnosed ³	–	–	–	0.05	0.03	0.03	0.02	0.02	0.02	0.02
South West	Number Tested	42741	49883	59051	61238	63867	66139	65546	57206	56255	63519
	Number Positive ²	30	38	30	41	29	30	49	54	25	28
	% Positive	0.07	0.08	0.05	0.07	0.05	0.05	0.07	0.09	0.04	0.04
	% Newly diagnosed ³	–	–	–	0.02	0.01	–	0.01	0.02	0.01	0.00
West Midlands	Number Tested	67760	66291	72235	75956	78113	75127	66559	65479	73339	74007
	Number Positive ²	110	97	87	128	136	112	112	96	114	111
	% Positive	0.16	0.15	0.12	0.17	0.17	0.15	0.17	0.15	0.16	0.15
	% Newly diagnosed ³	–	–	–	0.09	0.04	0.03	0.02	0.05	0.02	0.03
Yorkshire & Humber	Number Tested	60199	64317	62568	68304	67461	66018	70749	55880	69398	69234
	Number Positive ²	74	102	95	124	87	91	101	76	83	73
	% Positive	0.12	0.16	0.15	0.18	0.13	0.14	0.14	0.14	0.12	0.11
	% Newly diagnosed ³	–	–	–	0.06	0.02	0.05	0.05	0.02	0.01	0.01
National	Number Tested	585019	637309	673299	690695	705825	684510	684566	673373	693570	720590
	Number Positive²	1108	1066	1165	1275	1167	1182	1306	1080	1018	1082
	% Positive	0.19	0.17	0.17	0.18	0.17	0.17	0.19	0.16	0.15	0.15
	% Newly diagnosed³	–	–	–	0.07	0.06	0.07	0.04	0.04	0.03	0.03

¹ Beginning in 2009, additional data were collected regarding women who were previously diagnosed with HIV. From 2009, the % positive refers to those who were previously diagnosed and retested in this pregnancy and newly diagnosed women.

- 2 The number positive is the total number of women who screened positive during antenatal screening which comprises: women newly diagnosed and those previously diagnosed and retested in this pregnancy.
- 3 The proportion of women newly diagnosed = $\frac{\text{number of newly diagnosed women}}{\text{Number of women screened} - \text{previously diagnosed women}}$



Table 2c. Proportion of pregnant women screening positive for syphilis infection in England: 2006-2015

Syphilis*											
Region		2006	2007	2008	2009	2010	2011	2012	2013	2014	2015
East Midlands	Number Tested	23031	33009	43422	43628	50358	55562	53570	40330	39383	45515
	Number positive	12	39	33	56	77	95	83	67	59	80
	% Positive	0.05	0.12	0.08	0.13	0.15	0.17	0.15	0.17	0.15	0.18
East of England	Number Tested	64239	69100	73691	76755	75239	72827	62328	79914	89975	90348
	Number positive	70	67	64	67	46	61	66	75	98	105
	% Positive	0.11	0.10	0.09	0.09	0.06	0.08	0.11	0.09	0.11	0.12
London	Number Tested	Public Health England	140529	145131	152765	149475	136002	145587	138470	144761	150688
	Number positive	560	598	642	592	522	535	498	404	374	363
	% Positive	0.44	0.43	0.44	0.39	0.35	0.39	0.34	0.29	0.26	0.24
North East	Number Tested	28068	29732	31679	30955	31192	33322	31965	30746	30017	32050
	Number positive	34	29	27	33	38	34	41	44	74	47
	% Positive	0.12	0.10	0.09	0.11	0.12	0.10	0.13	0.14	0.25	0.15
North West	Number Tested	85792	90843	82582	76512	80132	78940	84931	91485	93602	94212
	Number positive	69	43	78	66	57	49	63	78	73	100
	% Positive	0.08	0.05	0.09	0.09	0.07	0.06	0.07	0.09	0.08	0.11
South East	Number Tested	97565	105897	107424	107852	112169	106070	107327	105335	107435	106764
	Number positive	113	108	84	96	91	78	69	67	65	61
	% Positive	0.12	0.10	0.08	0.09	0.08	0.07	0.06	0.06	0.06	0.06
South West	Number Tested	44850	50644	57949	60699	64549	66372	65633	57301	56296	63115
	Number positive	19	35	33	38	51	47	42	31	25	34
	% Positive	0.04	0.07	0.06	0.06	0.08	0.07	0.06	0.05	0.04	0.05
West Midlands	Number Tested	70033	69708	75605	77585	78563	75412	66671	66760	78232	74151
	Number positive	118	111	143	131	130	112	102	118	123	94
	% Positive	0.17	0.16	0.19	0.17	0.17	0.15	0.15	0.18	0.16	0.13
Yorkshire & Humber	Number Tested	63633	67227	63398	69620	68450	66987	70857	68270	69503	69097
	Number positive	44	56	67	63	71	49	62	60	80	67
	% Positive	0.07	0.08	0.11	0.09	0.10	0.07	0.09	0.09	0.12	0.10
National	Number Tested	605617	656689	680881	696371	710127	691494	688869	678611	709204	725940
	Number positive	1039	1086	1171	1142	1083	1060	1026	944	971	951
	% Positive	0.17	0.17	0.17	0.16	0.15	0.15	0.15	0.14	0.14	0.13

* Positive results do not differentiate between active and past syphilis infection.



Table 2d. Proportion of pregnant women screening as susceptible to rubella infection in England: 2006-2015

Rubella											
Region		2006	2007	2008	2009	2010	2011	2012	2013	2014	2015*
East Midlands	Number Tested	21995	25285	41348	39815	42980	55642	55706	40589	39488	48230
	Number susceptible	533	369	1341	1084	1328	2870	3173	2084	1951	3068
	% Susceptible	2.42	1.46	3.24	2.72	3.09	5.16	5.70	5.13	4.94	6.36
East of England	Number Tested	65269	65723	74212	74736	76809	73070	63232	81066	90002	90032
	Number susceptible	1463	1559	2193	2538	2637	2767	2426	3432	4011	4691
	% Susceptible	2.24	2.37	2.96	3.40	3.43	3.79	3.84	4.23	4.46	5.21
London	Number Tested	139331	139331	138243	151106	138629	126333	138698	139595	141071	148857
	Number susceptible	5538	5713	6259	7304	6646	6223	7054	8265	9120	11287
	% Susceptible	4.20	4.10	4.53	4.83	4.79	4.93	5.09	5.92	6.46	7.58
North East	Number Tested	27735	33610	33222	33585	32525	33505	32186	30746	29990	31914
	Number susceptible	979	1180	1771	2129	1899	2597	2577	2411	2172	2317
	% Susceptible	3.53	3.51	5.33	6.34	5.84	7.75	8.01	7.84	7.24	7.26
North West	Number Tested	87580	90237	78688	75185	79878	72862	88781	91192	93430	94133
	Number susceptible	1657	1802	2380	2323	2963	2782	4878	5649	5976	7829
	% Susceptible	1.89	2.00	3.02	3.09	3.71	3.82	5.36	6.19	6.40	8.32
South East	Number Tested	85170	106112	99462	108790	113320	105880	108173	103564	107446	105380
	Number susceptible	2278	2829	4099	5262	5696	5995	6164	7843	9248	12317
	% Susceptible	2.67	2.67	4.12	4.84	5.03	5.66	5.70	7.57	8.61	11.69
South West	Number Tested	45196	50883	50207	57332	63155	65639	65878	57508	56404	62573
	Number susceptible	1091	1364	1653	2183	2143	2726	3484	3234	3571	5693
	% Susceptible	2.41	2.68	3.29	3.81	3.39	4.15	5.29	5.62	6.33	9.53
West Midlands	Number Tested	69972	69816	76228	77716	80669	74599	66683	64744	76957	72244
	Number susceptible	1788	2044	2603	2725	3445	5334	5156	5304	6977	5840
	% Susceptible	2.56	2.93	3.41	3.51	4.27	7.15	7.73	8.19	9.07	8.08
Yorkshire & Humber	Number Tested	63318	66823	67646	65727	68172	67674	71397	68475	69795	69236
	Number susceptible	1977	2944	3568	3760	4323	4828	5915	6428	6201	6906
	% Susceptible	3.12	4.41	5.27	5.72	6.34	7.13	8.28	9.39	8.88	9.97
National	Number Tested	598243	647820	659256	683992	696137	675204	690734	677479	704583	722599
	Number susceptible	17304	19804	25867	29308	31080	36122	40827	38222	49227	60218
	% Susceptible	2.89	3.06	3.92	4.28	4.46	5.35	5.89	6.59	6.99	8.33

* An increase in rubella susceptibility rates has been observed in some regions in 2015. Possible causes have been investigated and there have been some changes in laboratory procedures which may have led to an increased number of women being classified as susceptible.