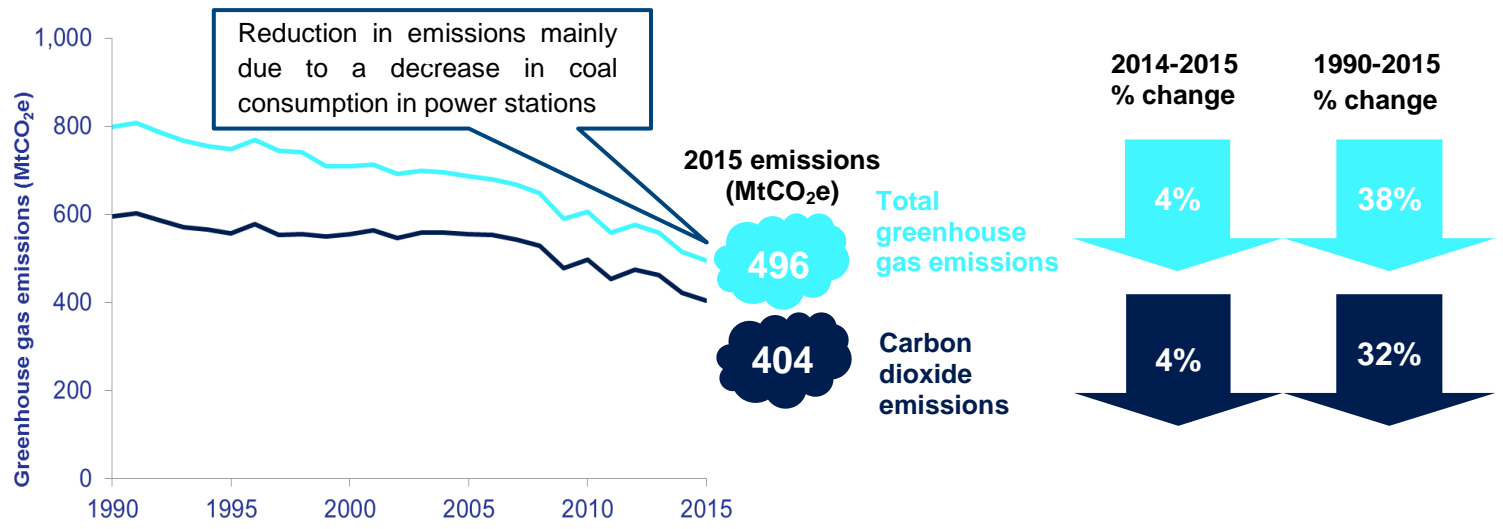


2015 UK greenhouse gas emissions are estimated to decrease from 2014

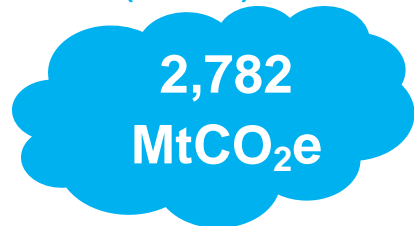


The UK is on track to meet the Second Carbon Budget

UK greenhouse gas emissions to date during the 2nd Carbon Budget period



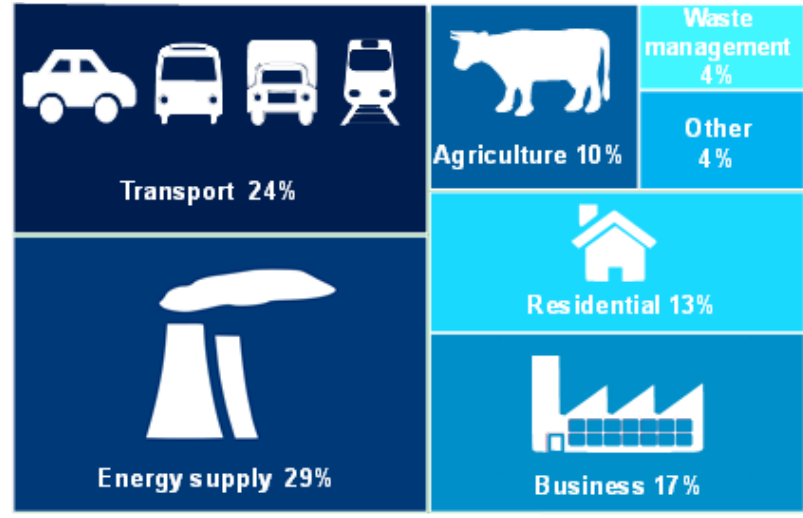
2nd Carbon Budget (2013-17) level



Total territorial emissions for 2013-2015 combined

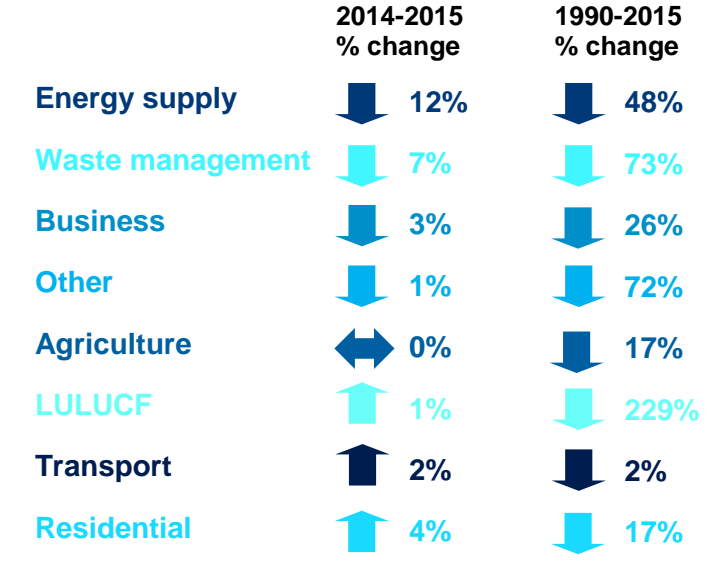
The second Carbon Budget figures will not be finalised until end of budgetary period reporting in 2019.

Energy supply remains the largest emitting sector of UK 2015 greenhouse gas emissions



Other includes Public and Industrial Process sectors (the Land Use, Land Use Change and Forestry (LULUCF) sector is excluded from the sector statistics above as it acted as a net sink of emissions). Please note the percentages above do not sum to 100% due to rounding.

Energy supply and waste management sectors experienced the largest reductions in emissions from 2014 to 2015



LULUCF has a large percentage decrease from 1990-2015 as emissions in this sector have gone from being a net source in 1990 (5.7 MtCO₂e) to a net sink of emissions in 2015 (-7.4 MtCO₂e).