



3rd November 2016

United Kingdom Egg Statistics – Quarter 3, 2016

This release shows quarterly information on the numbers of eggs packed in UK packing stations (which covers the vast majority of total eggs produced), usage and farm-gate egg prices. It also includes monthly information on the trade in eggs and egg products.

Key results

- 7.2 million cases of eggs were packed in UK egg packing stations during the third quarter of 2016. This represents a 0.1% decrease on the previous quarter and a 3.5 % increase on the third quarter in 2015. This shows a decrease for the first time since the first quarter of 2015.
- The average UK farm-gate egg price through the third quarter of 2016 was 69.9 pence per dozen, virtually unchanged on quarter 2 of 2016, although it represents a 15% decrease on the same quarter in 2015.
- The production of egg products during the third quarter of 2016 totalled 25.6 thousand tonnes, a 4.6% decrease on the previous quarter and a 0.9% increase on the third quarter 2015.

This quarterly release will be next updated at 09:30 on 2nd February 2017. Full time series are available to download at: <https://www.gov.uk/government/publications/egg-statistics>.

Enquiries on this publication to:

Ben Drummond, Department for Environment, Food and Rural Affairs, Room 201, Foss House, Kings Pool, 1 - 2 Peasholme Green, York YO1 7PX. Tel:++ 44 (0)208 0266157, email:ben.drummond@defra.gsi.gov.uk

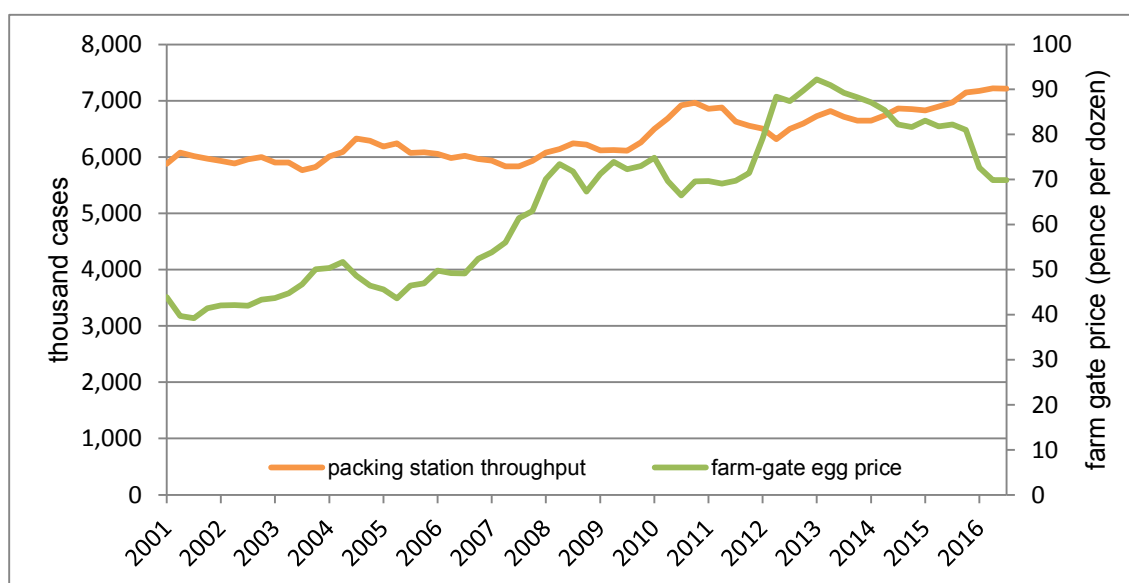
A National Statistics publication. National Statistics are produced to high professional standards. They undergo regular quality assurance reviews to ensure they meet customer needs. They are produced free from political interference. For general enquiries about National Statistics, contact the National Statistics Public Enquiry Service: tel. 0845 601 3034 email info@statistics.gov.uk. You can find National Statistics on the internet at www.statistics.gov.uk.

Section 1: UK egg packing volumes, methods of production, UK country breakdowns and price statistics

The tables in this section show quarterly information on the volumes of eggs passed through the UK egg packing stations. These eggs generally account for nearly 90% of total egg production. Packing station figures include throughput of both graded and ungraded eggs.

- The number of eggs which went through the packing stations in Q3 2016 increased 3.5% on the same quarter in 2015.
- Egg prices have remained at 69.9p per dozen, a 15% fall on Q3 2015 price.

Figure 1: The number of eggs packed in UK packing stations compared to the UK farm-gate egg price: 2001-2016



Note: Prices are not adjusted for inflation

Table 1: UK Packing Station egg throughput by country

		Thousand cases				
2014	Q4	5,015	820	1,014	6,849	3.1%
	Total	20,025	3,463	3,610	27,097	0.7%
2015	Q1	5,068	871	887	6,826	2.7%
	Q2	5,113	868	913	6,894	2.3%
	Q3	5,114	876	980	6,970	1.6%
	Q4	5,123	943	1,078	7,144	4.3%
	Total	20,418	3,558	3,858	27,834	2.7%
2016	Q1	5,219	935	1,018	7,172	5.1%
	Q2	5,270	926	1,022	7,217	4.7%
	Q3	5,119	989	1,104	7,212	3.5%

Table 2: UK Packing Station egg throughput by egg production type

Period		Enriched cage	Barn	Free Range	Organic	Total
2014	Q4	3,613	156	2,927	152	6,849
	Total	14,097	782	11,591	627	27,097
2015	Q1	3,545	165	2,960	156	6,826
	Q2	3,515	168	3,041	170	6,894
	Q3	3,486	159	3,158	166	6,970
	Q4	3,666	170	3,142	166	7,144
	Total	14,213	661	12,301	658	27,834
2016	Q1	3,600	153	3,258	161	7,172
	Q2	3,588	160	3,292	176	7,217
	Q3	3,437	173	3,412	190	7,212

Thousand cases

- Eggs produced from hens in enriched colony systems (intensive cages pre-2012) accounted for 51% of the total throughput in 2015, one percentage point lower than in 2014. Free range eggs accounted for 44% of 2015 throughput, one percentage point higher than in 2014.

Figure 2: UK egg throughput by production method

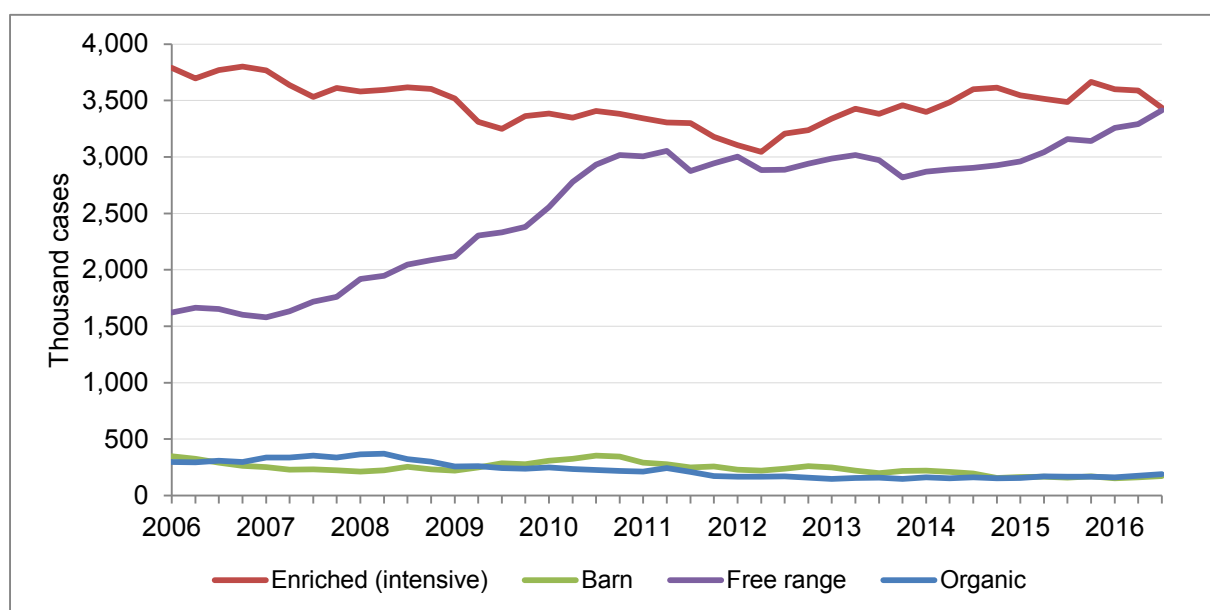


Table 3: Average UK farm-gate egg price (a)

Period		Enriched cage	Barn	Free Range	Organic	All Eggs	% change on previous year
2014	Q4	65.7	c	97.8	c	81.7	-7.5%
	Total	67.8	c	100.1	c	84.1	-6.7%
2015	Q1	65.3	c	100.6	c	83.1	-4.6%
	Q2	64.0	c	98.4	c	81.8	-4.2%
	Q3	64.2	c	98.3	c	82.2	-0.01%
	Q4	63.1	c	98.0	c	81.0	-0.8%
	Total	64.1	c	98.8	c	82.1	-2.4%
2016	Q1	56.4	c	87.0	c	72.6	-13%
	Q2	53.9	c	83.8	c	69.8	-15%
	Q3	53.4	c	83.1	c	69.9	-15%

Pence per dozen

'c' confidential

(a) From 2012 the price is an average across the survey period rather than an end of period weekly spot price and weighted according to the volumes packed by each packing station. Bonus payments paid are included.

Section 2: UK egg processing statistics

- The number of eggs bought by UK egg processors in Q3 2016 totalled 1.2 million cases (equating to 25 thousand tonnes), a decrease of 3.8% on the same period in 2015.
- Liquid egg accounted for 67% of the total production in Q3 2016. Total production was up 0.9% in Q3 2016 compared to the same quarter last year.

Table 4: Number of eggs bought by UK Egg Processors

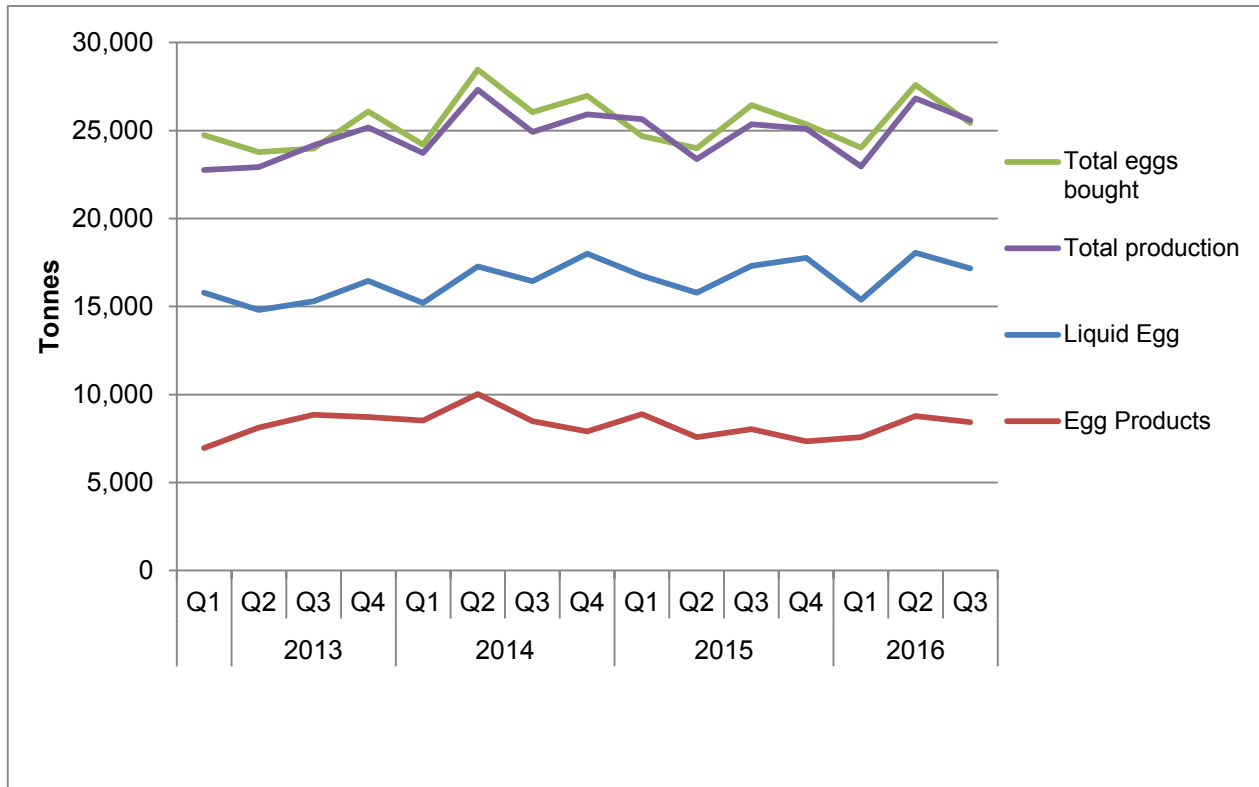
Period		Thousand cases	Tonnes	% change year on year
2014	Q4	1,226	26,979	3.5%
	Total	4,804	105,677	7.2%
2015	Q1	1,122	24,688	2.0%
	Q2	1,091	23,991	-16%
	Q3	1,202	26,448	1.6%
	Q4	1,153	25,364	-6.0%
	Total	4,568	100,491	-4.9%
2016	Q1	1,092	24,034	-2.7%
	Q2	1,254	27,583	15%
	Q3	1,156	25,431	-3.8%

Table 5: Production of egg products by UK Egg Processors

Period		Liquid Egg	Egg Products	Total	% change year on year
			Hard Boiled & Other Products (a)		
2014	Q4	17,999	7,914	25,913	2.9%
	Total	66,910	34,968	101,878	7.2%
2015	Q1	16,757	8,891	25,648	8.1%
	Q2	15,790	7,586	23,377	-14%
	Q3	17,315	8,038	25,354	1.7%
	Q4	17,761	7,334	25,096	-3.2%
	Total	67,624	31,850	99,474	-2.4%
2016	Q1	15,387	7,577	22,964	-10%
	Q2	18,058	8,770	26,828	15%
	Q3	17,160	8,434	25,594	0.9%

(a) Separate data for Hard Boiled Eggs and Other Products is currently unavailable to avoid disclosure of confidential information.

Figure 3: Intake and Production of Egg Products by UK Egg Processors (a)



(a) The volume of eggs processed also includes any processing carried out for external customers who supply their own eggs. This can cause the overall volume of eggs processed to be higher than the volume of eggs purchased, as in the statistics for Q1 2015.

Section 3: UK Egg Trade

Trade figures are supplied by HM Revenue and Customs. Trade data marked as provisional may be subject to revision.

- The latest data for August 2016 shows in imports of shell eggs at 56,000 cases, a 59% decrease on the same period last year which reflects the availability of home grown eggs. Imports of egg products are down 3.6% at 338,000 cases compared to August 2015.
- Shell egg export figures for August 2016 are 22,000 cases, 54% up compared to the same period in 2015, whilst egg product exports were 9,000 cases, up 29% or 2,000 cases compared to August 2015.

Table 6: UK Trade in Shell Eggs

Thousand cases

Calendar Months	Imports				12 Month Moving Totals	Exports				12 Month Moving Totals
	2014	2015	2016	% change 15/16		2014	2015	2016	% change 15/16	
January	142	108	158	45%	1,620	29	17	18	2.6%	182
February	135	145	113	-22%	1,588	24	9	21	139%	194
March	168	185	129	-30%	1,533	35	9	19	104%	203
April	147	164	118	-28%	1,487	17	9	24	176%	219
May	155	123	106	-14%	1,470	12	13	20	58%	226
June	143	140	105	-25%	1,435	23	20	20	2%	226
July	141	120	112	-6%	1,427	22	25	20	-21%	221
August	148	138	56	-59%	1,345	19	14	22	54%	229
September	156	127				19	12			
October	180	105				15	17			
November	180	121				14	17			
December	155	94				15	20			
Total	1,851	1,571	898			243	181	163		

All trade data are provisional

Table 7: UK Trade in Egg Products (a)

Thousand cases

Calendar Months	Imports				12 Month Moving Totals	Exports				12 Month Moving Totals
	2014	2015	2016	% change 15/16		2014	2015	2016	% change 15/16	
January	244	283	310	9.4%	4,291	12	14	7	-49%	105
February	237	352	343	-2.5%	4,282	11	9	8	-9.0%	104
March	221	532	354	-34%	4,104	10	10	8	-20%	102
April	291	530	349	-34%	3,923	12	9	8	-16%	100
May	298	254	307	21%	3,976	8	8	8	4%	101
June	245	301	380	26%	4,055	9	9	8	-9%	100
July	270	291	404	39%	4,167	10	10	9	-13%	99
August	238	350	338	-3.6%	4,155	10	7	9	29%	101
September	482	353				14	7			
October	294	406				9	9			
November	322	313				15	13			
December	272	299				10	7			
Total	3,413	4,265	2,784			130	111	65		

(a) Figures are based on SITCs: 025.21, 025.22 and 025.30, converted to shell egg equivalent

All trade data are provisional

Section 4: Data users, methodology, notes and revisions policy

Data users

1. Users of the egg statistics include the EU Commission who require the UK farm gate egg price weekly under Regulation EC 546/2003. They have also recently issued a voluntary request for Member States to submit egg production estimates to fill a data gap that exists.
2. Representatives of the egg and poultry industry are also major users of the data. The data on egg production volumes and egg type are key sector indicators for the British Egg Industry Council (BEIC) as they reflect the size of the national laying flock. The British Free Range Egg Producers Association also makes heavy use of our data as it indicates the size of the free range sector. We work closely with these users and consult widely when considering any changes to our surveys or associated datasets.
3. The Home Grown Cereals Authority (HGCA), part of the Agricultural and Horticultural Development Board, rely on egg production data as a good indicator of the commercial layer flock and associated feed demand and hence grain usage by the sector.
4. Our statistics are also often heavily referenced in industry publications such as “Poultry World” and “The Ranger”, the official magazine of the British Free Range Egg Producers Association.

Methodology

5. **Egg Packing Statistics:** Total egg throughput is modelled using the number of commercial laying hens (which is based on the Defra Hatchery Survey layer chick placings), average egg yields, average mortality rates and the proportion of UK eggs that go through packing stations. To estimate further breakdowns from this total output, Defra runs a quarterly survey of registered UK egg packing stations to collect data on egg production method (i.e. free range, enriched cages etc.), country of packing and prices. This “Egg Packers survey” is a voluntary survey of 27 packing stations across the UK, which accounts for around 75% of eggs packed in the UK. The response rate is typically 100 per cent.
6. The prices obtained on the survey are weighted according to the volume of eggs packed by each packing station to obtain average prices for the UK. From 2012, prices include any bonus payments paid to producers.
7. **Egg processing statistics:** Defra runs a quarterly survey of all registered egg processors. It is a voluntary survey of 11 respondents that collects information on the number of eggs bought by egg processors and the quantity of egg products produced. The response rate is typically 100 per cent.
8. In tables that show numbers of eggs the units used are 'thousand cases'. There are 360 eggs in one case.
9. **Trade statistics:** These figures come from HM Revenue and Customs, but are validated and adjusted if necessary prior to publication. The Standard Industrial Trade Classification codes used to produce each table are given in the footnotes below the tables.
10. The data are subject to a variety of validation checks which identify inconsistencies in the data. All data are cleaned prior to publication.
11. The percentage changes shown are calculated using unrounded figures. Thus any percentage changes calculated using the published (rounded) figures may not equate exactly with the changes shown.

12. The UK 12 month moving totals represent the sum of the 12 months up to and including the date indicated. They can be seen as a trend measure that is not affected by seasonality.
13. Contact details are available on the front page of this notice, for you to send feedback or ask questions about the information provided.

Revisions policy:

14. Figures in this notice are provisional and subject to revision. We will provide information about any revisions we make to previously published information in this statistics notice, and the associated datasets. Revisions could occur for various reasons, including:
 - a. if we have not received survey data from respondents we make an estimate based on their previous returns. These estimates will be replaced with actual survey data when it is received.
 - b. survey respondents occasionally supply amended figures for previous periods.
15. **This quarter there have been revisions to Q2 2016 packing and processing data, the revisions are small. For example the total UK throughput increased 0.1% from 7207 thousand cases to 7217 thousand cases. Also the total number of eggs bought for processing increased 7.4% from 1167 thousand cases to 1254 thousand cases. Liquid egg production also increased 2.9% from 17522 to 18058 tonnes. These are due to actual survey data replacing estimates.**

This quarter there have been revisions to 2015 and 2016 trade figures due to amended HMRC data.